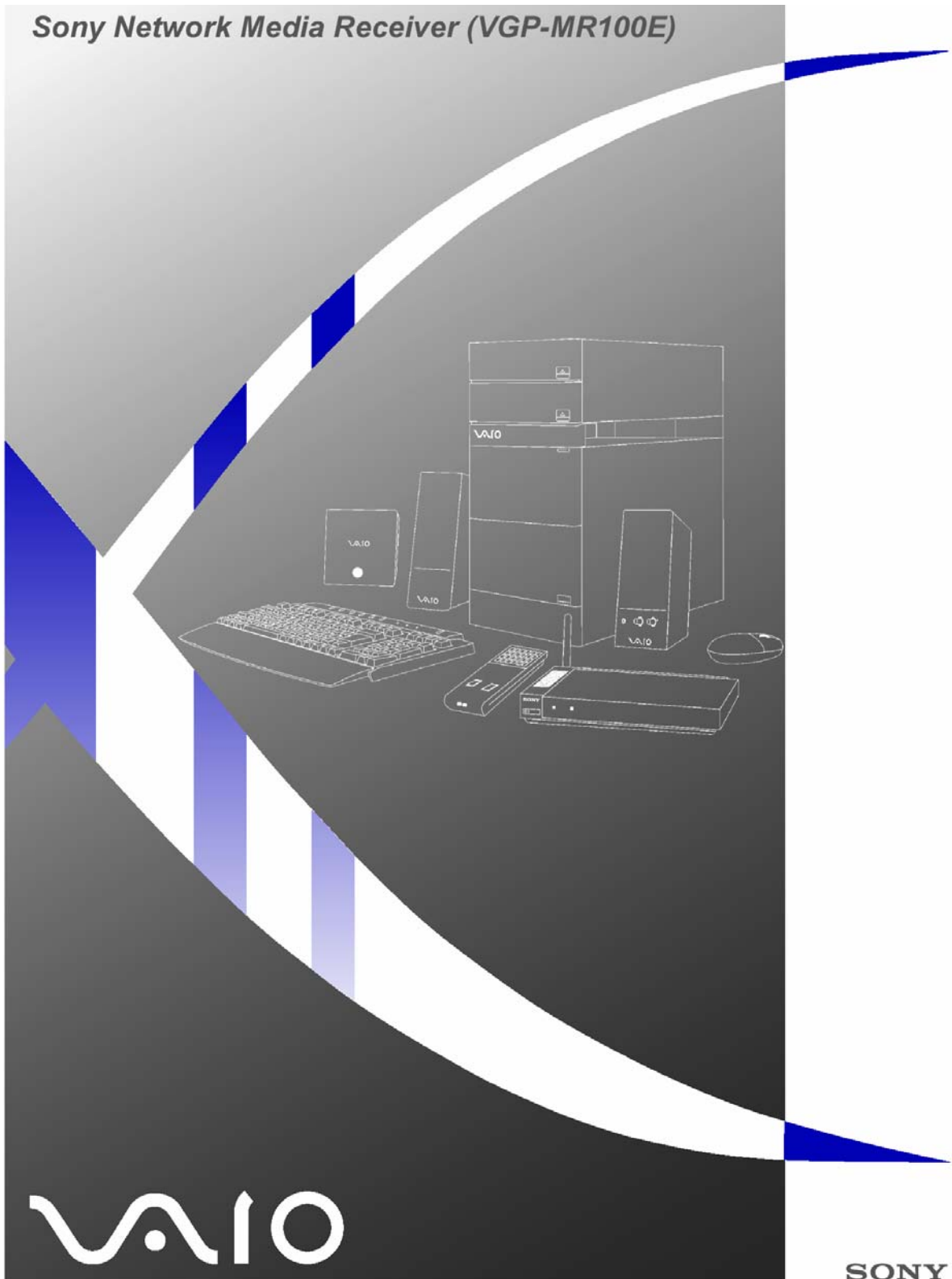


Installation procedure for the

Sony Network Media Receiver (VGP-MR100E)



INSTALLATION PROCEDURE FOR THE SONY NETWORK MEDIA RECEIVER

Welcome to the Sony Home Server world.

This guide to the installation of the Network Media Receiver is intended to be an effective and clear support during the creation of your Home Network, that is a system which allows the sharing of the multimedia contents in your Personal Computer with other products in the Audio/Video world.

This will allow you to enjoy technology in the most comfortable and convenient way for your requirements, in whichever location in the house you wish, and above all without cables which restrict the positioning of products and the free circulation within the rooms.

All the accessories which allow you to live this extraordinary experience are provided with your Vaio computer.

The Network Media Receiver (VGP-MR100E) makes it possible to share the data contained in the PC (especially photos, videos, musical extracts) with Audio/Video equipment in other areas of the home.

The Access Point (PCWA-A320) allows the use of the Network Media Receiver without the aid of cables which inconvenience and limit you, really bringing multimedia into your everyday life.

Note:

This presentation is not intended to act as a substitute for the instructions booklet included in the packaging of the computer. Therefore, for a comprehensive use of the product, it is recommended that you read the contents of the CD-ROM "Media Network Receiver" provided with the equipment.

This installation procedure relates to a newly purchased computer, which therefore does not have software applications installed by the final user.

Should there be any problems following purchase, please contact the Vaio-link support (www.vaio-link.com) or telephone the number XXXXXXXX.

Index

<u>Preliminary operations</u>	<u>2</u>
<u>Connect the Network Media Receiver to the television set or video/DVD recorder</u>	<u>2</u>
<u>WIRELESS – How to create your Wireless environment</u>	<u>3</u>
Installation of the Access Point (PCWA-A320)	3
Configuration of the Access Point (PCWA-A320)	3
Configuration of the PC's network card	8
<u>Configuration of Vaio Media</u>	<u>11</u>
Activation of the sharing of Vaio Media libraries	11
Setting of the folders for multimedia contents	12
<u>Configuration of Vaio Zone</u>	<u>19</u>
Configuration of the TV Tuner	19
Modification of the system Firewall settings	22
Organisation of TV channels	24
<u>Deactivation of Norton Internet Security</u>	<u>26</u>
<u>Configuration of the Network Media Receiver</u>	<u>27</u>
Configuration of the Network Media Receiver (VGP-MR100E)	19
Changing the language of the system	28
Modification of TV settings	29
Modification of network settings	31
<u>Using the Network Media Receiver</u>	<u>43</u>
Finding the server	43
Registered folders	45
Examples of use of the Network Media Receiver browser	47
<u>Use of Vaio Zone</u>	<u>48</u>
Playing TV	48
Playing music tracks	53
Playing photos	54
Playing videos	56
Playing CDs/DVDs	57
Modification of the Vaio Zone setting	59
<u>Component connection for HD TV</u>	<u>60</u>
<u>Types of files managed by the Network Media Receiver</u>	<u>61</u>

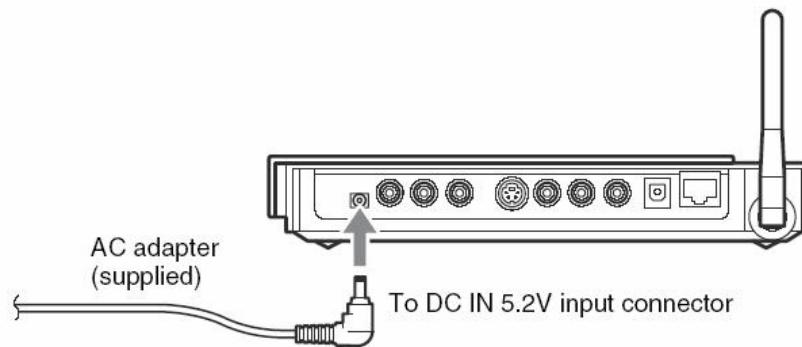
1.2.3 PRELIMINARY OPERATIONS

1 Open the **Wireless LAN** package.

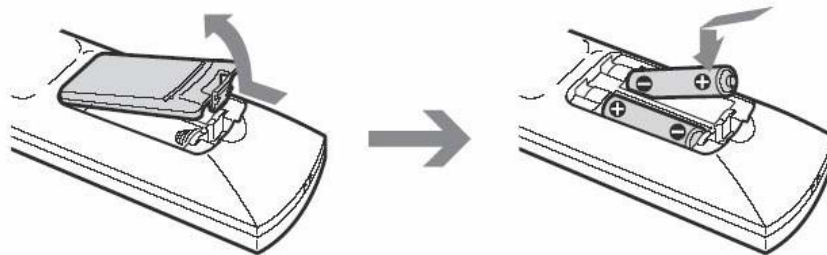
2 Plug the **Network Media Receiver** into the electric supply outlet (220 V).

Connect the AC adaptor (PCGA-AC5V1) to the DC port of the Network Media Receiver appliance (VGP-MR100E).

Connect the electric cable to the AC adaptor and afterwards to the socket on the wall.



3 **Make the remote control operational.** Insert 2 AA batteries in the appropriate lodgement.



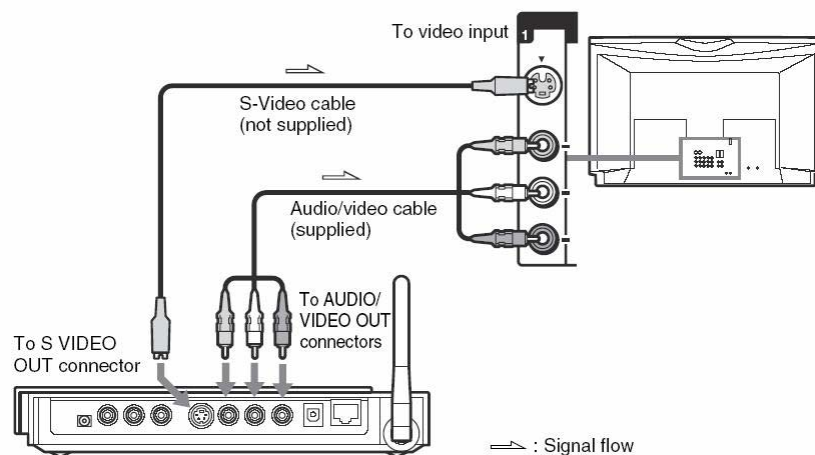
4 **Connect the Network Media Receiver to the television set or the video recorder.**

Connect the A/V cable to the sockets on the TV or on the VCR, respecting the corresponding colours.

S-Video cable (not included)

Video input

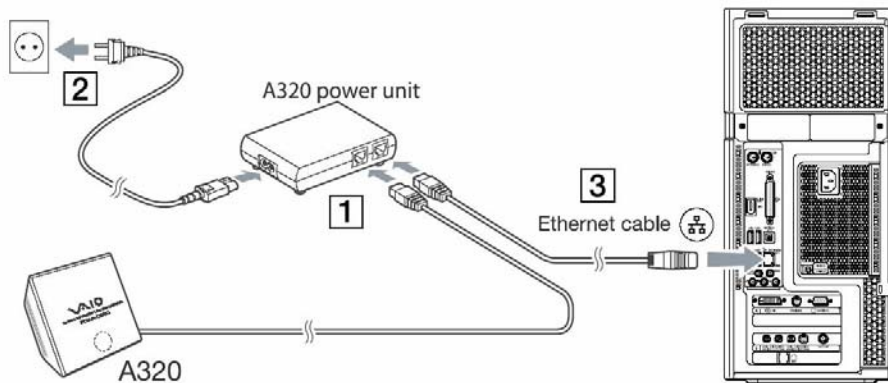
Component Audio/Video cables (included)



WIRELESS – How to create your Wireless environment- 5

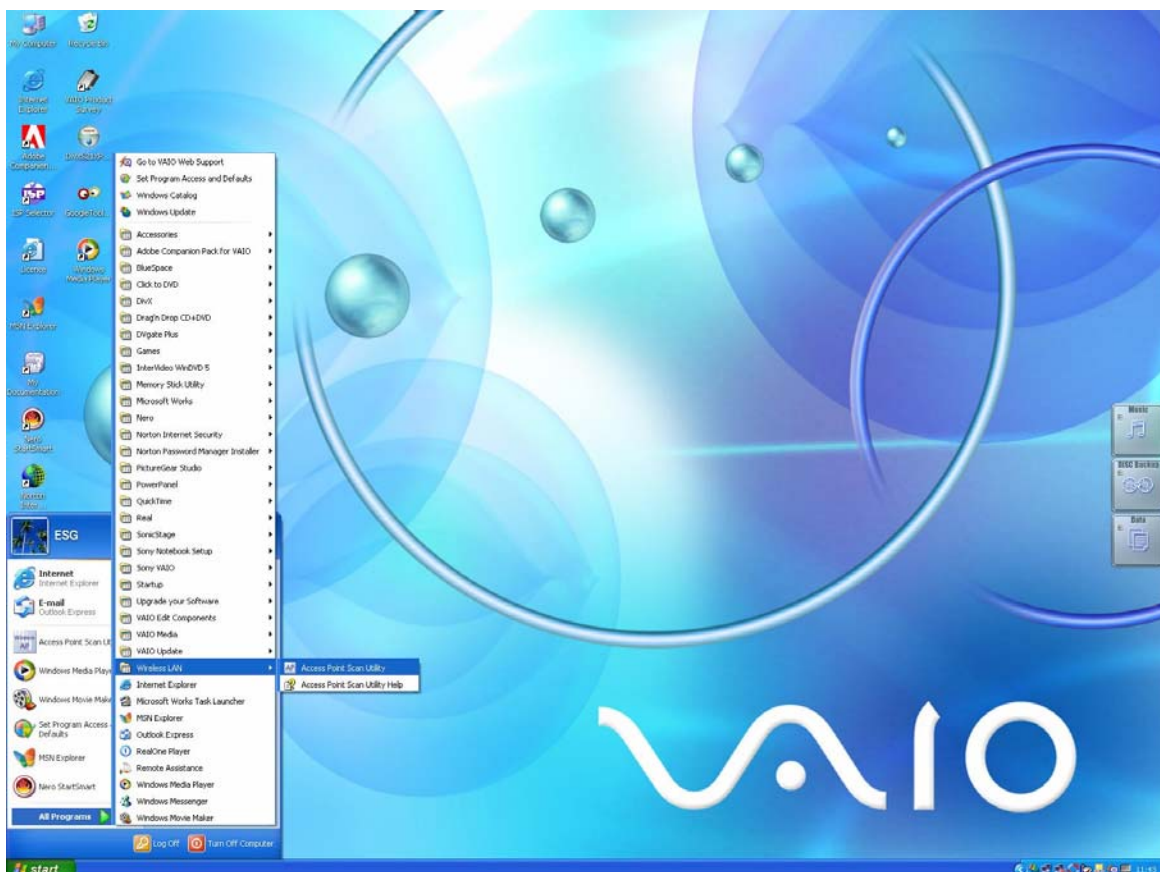
Installation of the Access Point (PCWA-A320) - A

1. Connect the Access Point to the inlet “WIRELESS UNIT” of the Power Unit (PCWA-AC04).
2. Connect the plug to the electric outlet (220V).
3. Use the crossover cable, blue (about 1 meter long), provided with the PCNA-MR100E to connect the unit (“NETWORK” port) to the ETHERNET port of your Vaio.

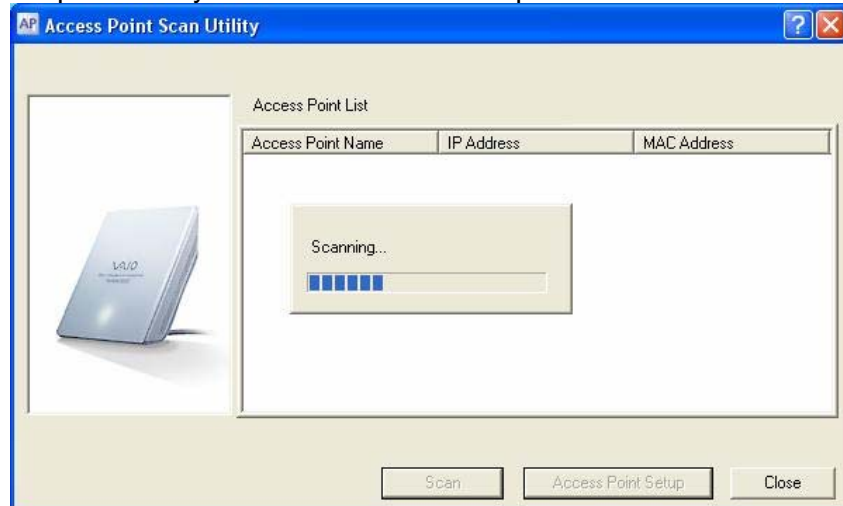


Configuration of the Access Point (PCWA-A320) - B

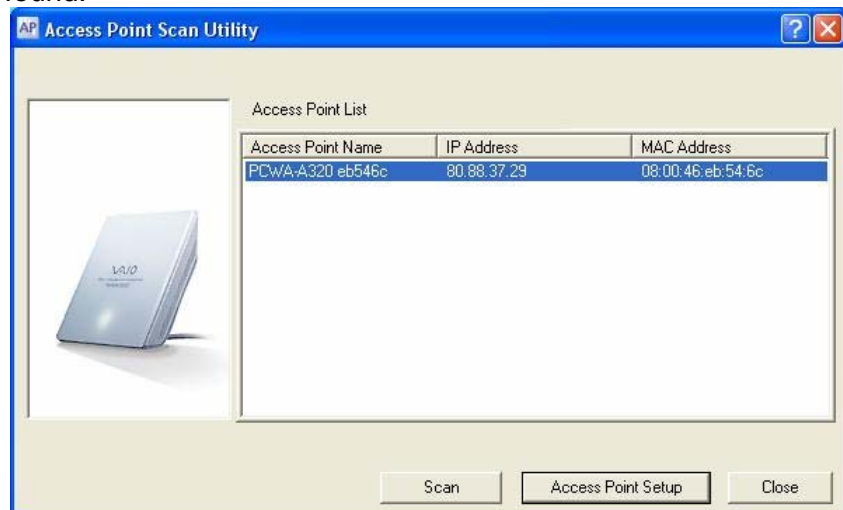
1. Select “START” from the start bar, “All programmes”, “Wireless LAN”, ”Access Point Scan Utility”. Launch the programme.



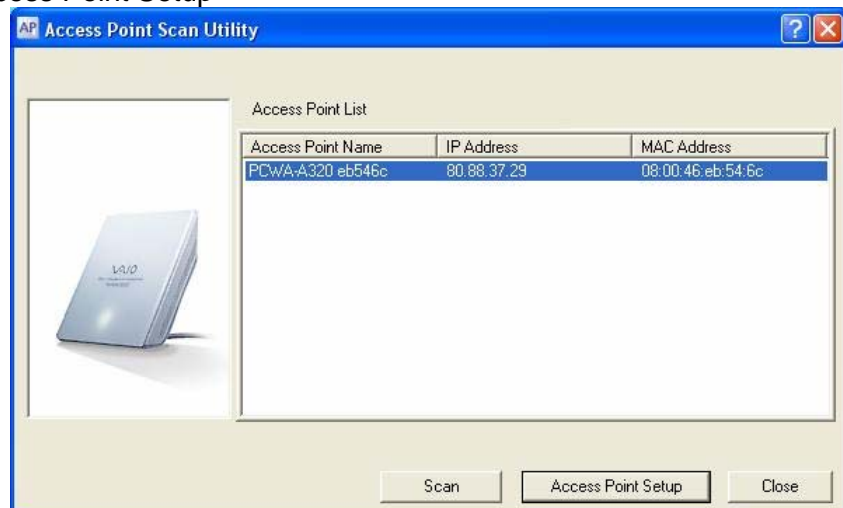
At this point the system will search for the presence of an Access Point.



Access Point found.



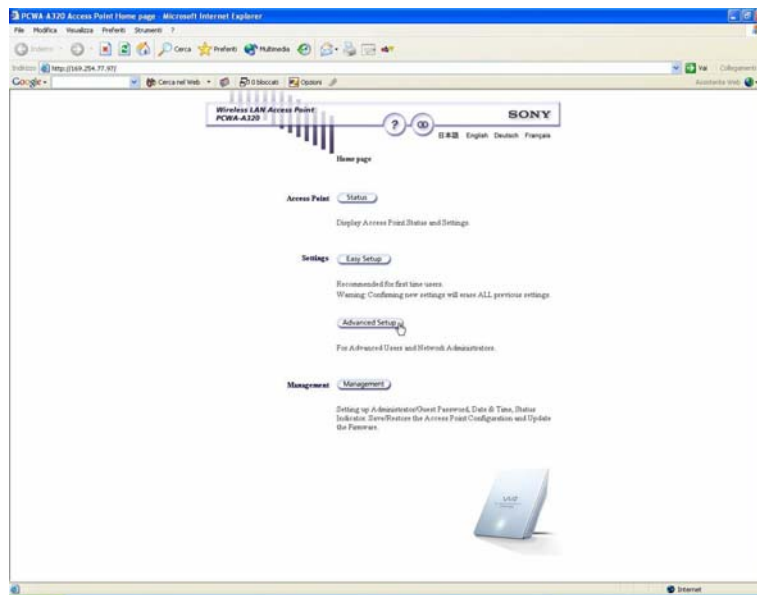
2. Select "Access Point Setup"



A window will open offering various possibilities to configure the access point.

- > Status
- > Easy setup
- > Advanced setup
- > Management

3. Select “Advanced setup”



By means of this menu, it will be possible to set all the necessary parameters in order to create and operate a wireless environment.

“Advanced setup” comprises a section on **Wireless Settings**, one on **Network Settings**, and finally one on **Other Settings**.

4. Begin by configuring the **Wireless Settings** section.

The various options will have to be configured as follows:

Network name (SSID)	Insert a name for the Wireless LAN connection. For example DIGITAL.
Encryption (WEP)	Select: “Enable”
Key length	It is possible to select the length of the keyword between 40-104 bits. With 40 bits you can enter a password of 5 letters; if 104 bits is selected, a password of 13 letters will have to be entered.
Wep key Type	Select: “ASCII characters” to enter an alpha-numerical password.
Wep key	Enter a password of 5 or 13 characters, as requested in the previous line.
Wep key (confirmation)	Retype the password written in the previous line.
Frequency (channel)	Select: “Auto select”
Broadcast Network Name (SSID)	Select: “Yes”
IEEE 802.11 Mode:	Select: “11g”
Access Control:	Select: “Accept all”

5. Now configure the section **Network Settings**. The various options will have to be configured as follows:

Connection Method Select: "Obtain an IP address automatically (DHCP)"
Speed Select: "Auto-Detect"

6. Finally configure the section **Other Settings**.
 The various options will have to be configured as follows:

Quick Setup switch Select: "Enable"

Wireless LAN Access Point
PCWA-A320

Advanced Setup

WIRELESS Settings [Help](#)

Network Name (SSID)

Encryption (WEP)

Key Length

WEP Key Type

Number of characters

WEP Key

WEP Key (Confirmation)

Frequency (Channel)

Broadcast Network Name (SSID)

IEEE 802.11 Mode

Access Control Accept all
 Accept only clients in [Accept List](#)

NETWORK Settings [Help](#)

Connection Method
 Obtain an IP address automatically (DHCP)
 Use the following IP address

IP Address

Netmask

Default Gateway

DNS Server 1 (Optional)

DNS Server 2 (Optional)

DNS Server 3 (Optional)

Speed

Other Settings [Help](#)

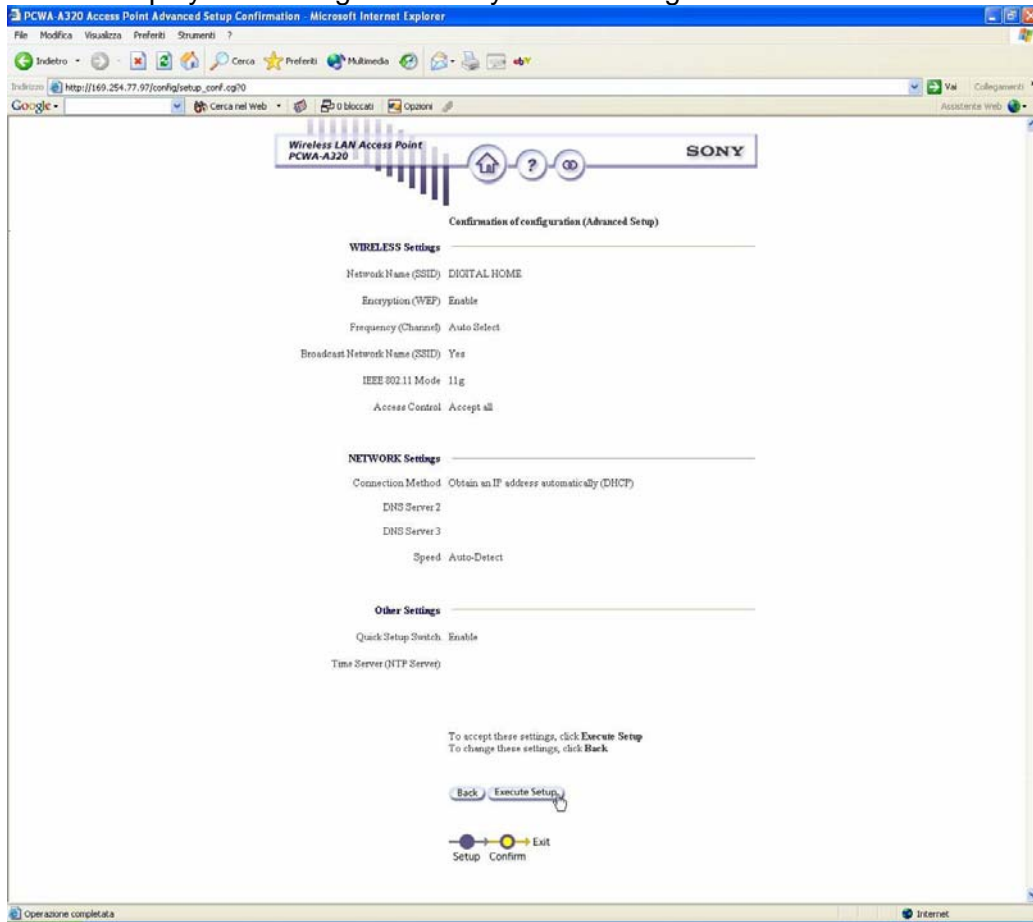
Quick Setup Switch

Time Server (NTP Server) (Optional)

Setup Confirm Exit

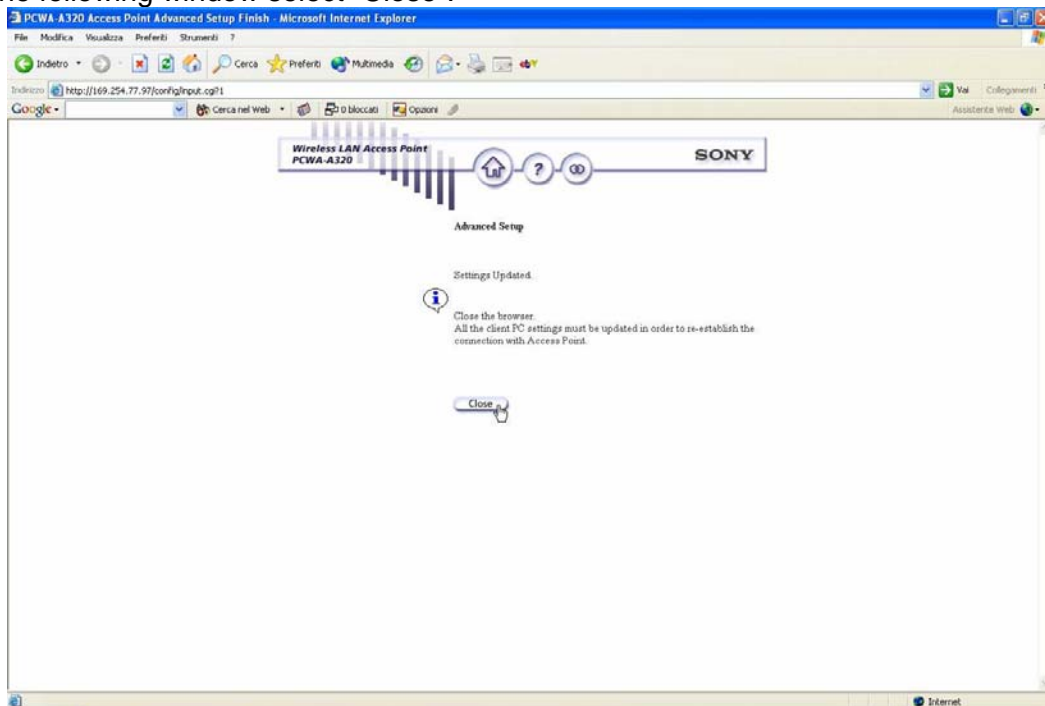
7. Once all the fields have been defined as stated above, select "Next".

A page is now displayed showing a summary of the settings entered so far.



8. Confirm with “Execute Setup”.

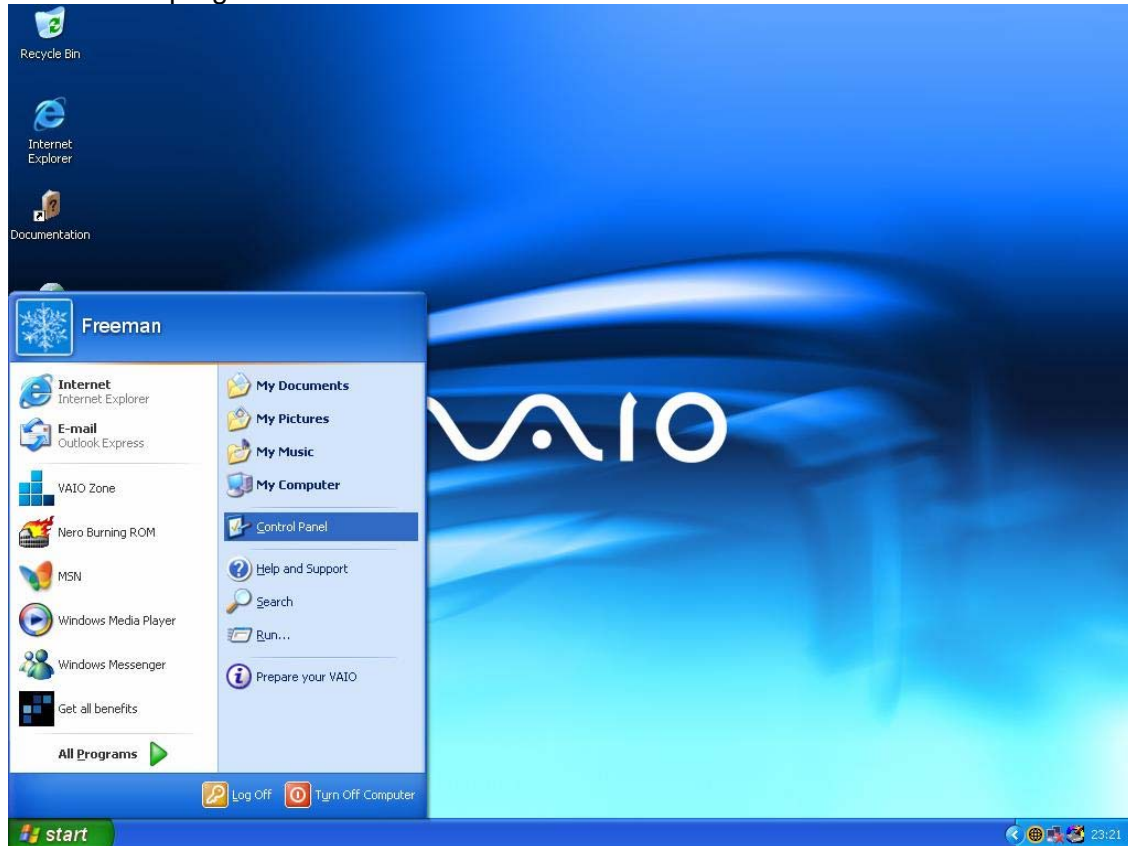
9. In the following window select “Close”.



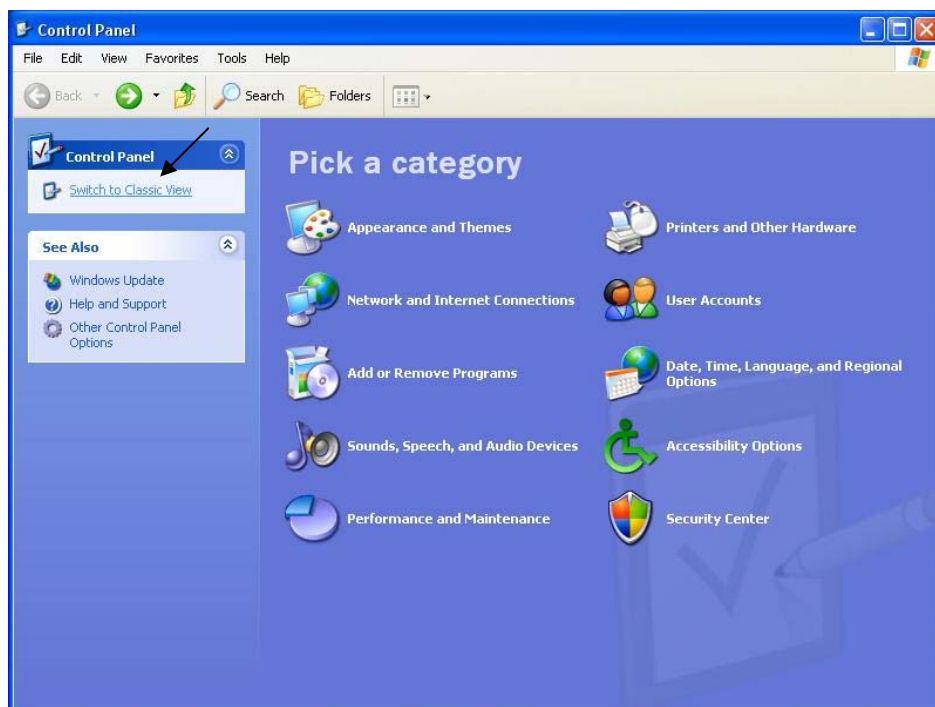
In the operation confirmation message press “YES”

Configuration of the PC's network card - C

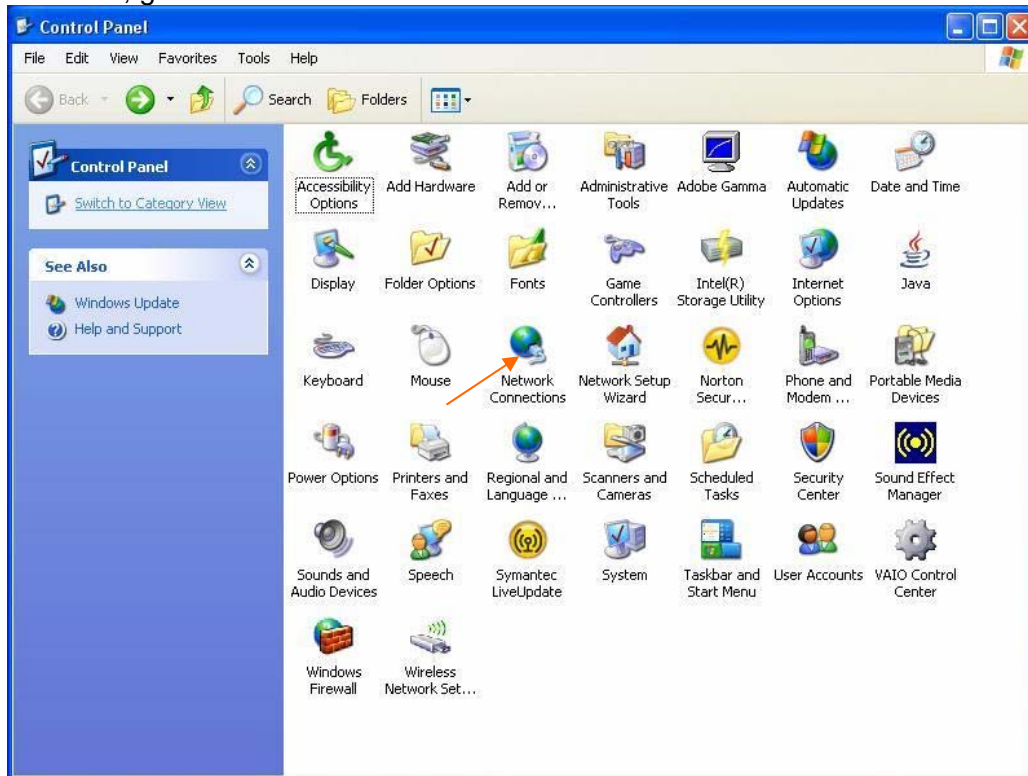
1. "START" from the start bar, "All programmes", "Control Panel", Launch the programme.



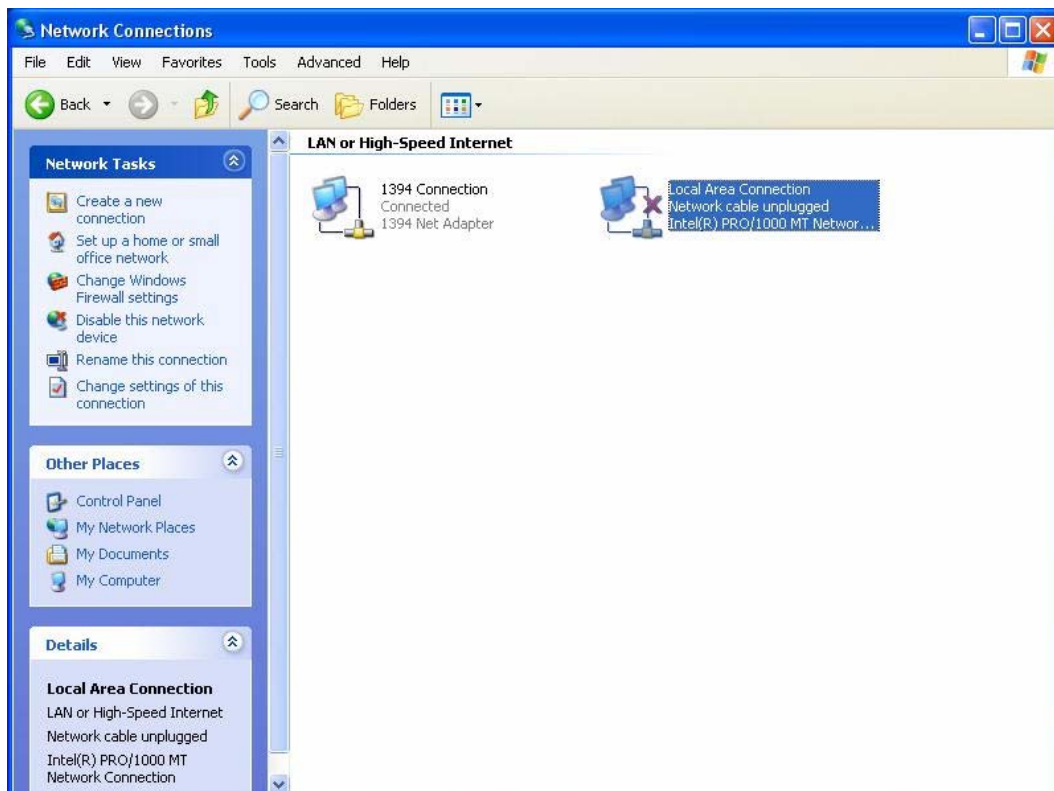
With the mouse, go to the "Switch to Classic View" click.



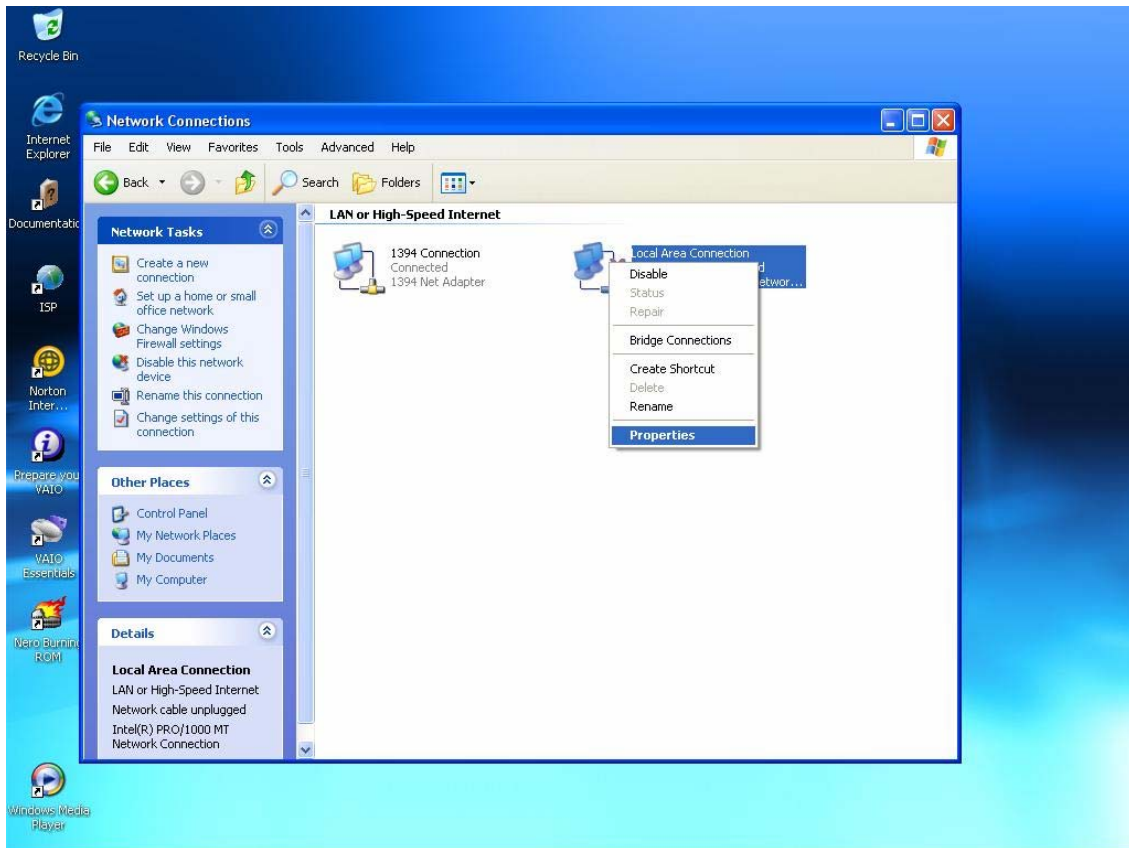
With the mouse, go to the “Network Connections” icon and double click on it.



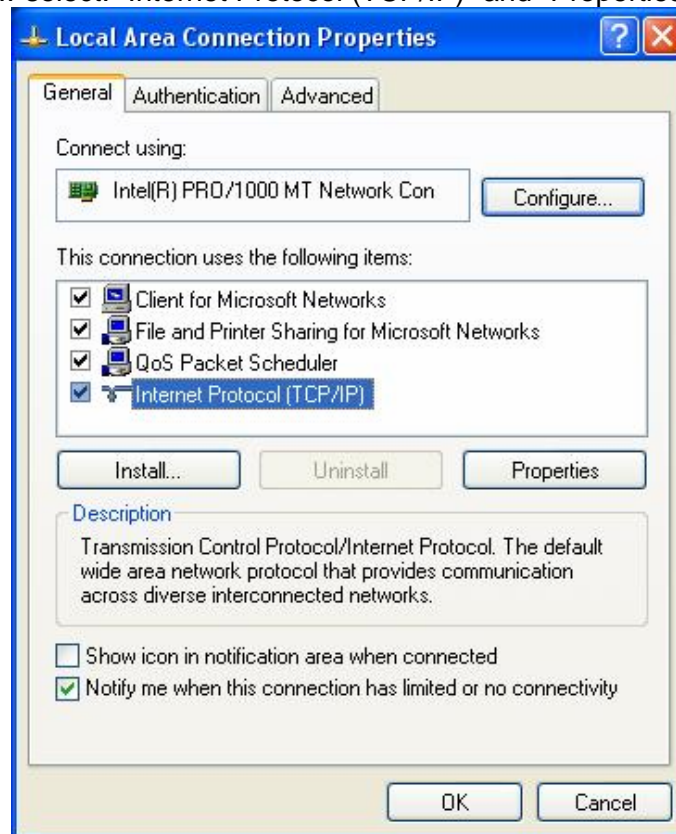
The window “Network connections” opens. In the window there are two icons: “Connections 1394” and “Connections to local network (LAN)”.



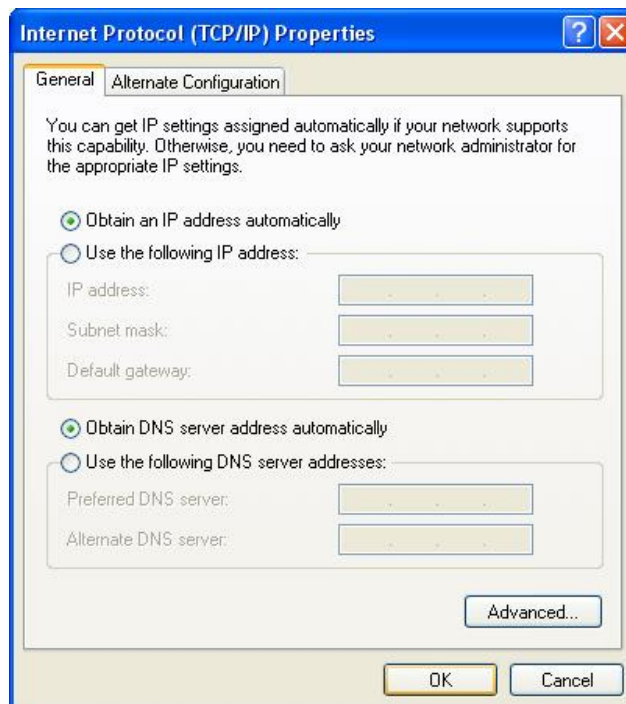
3. Select the icon “Connections to local network (LAN)” and, pressing the mouse’s right button, select “Properties”.



4. Inside this window select:” Internet Protocol (TCP/IP)” and “Properties”.



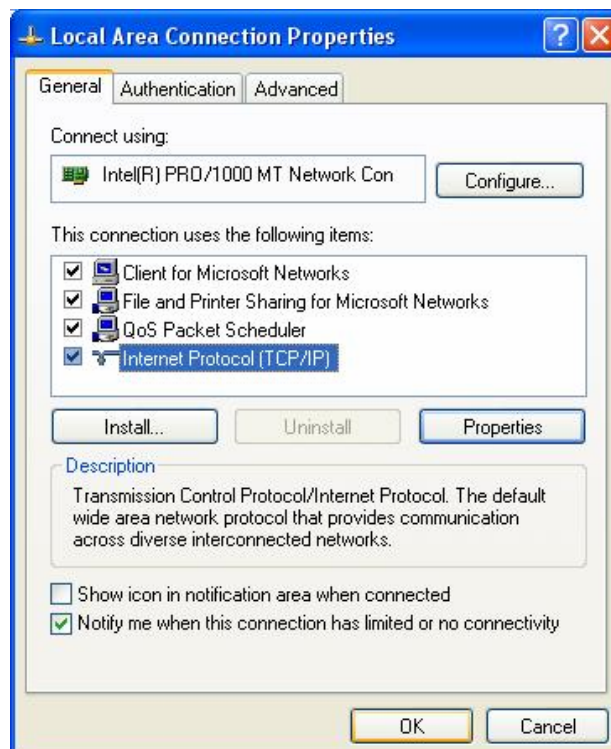
5. The window: "Properties - Internet Protocol (TCP/IP)" will open.



Select:

> "Automatically obtain an IP address".

Confirm your choice by clicking "OK".



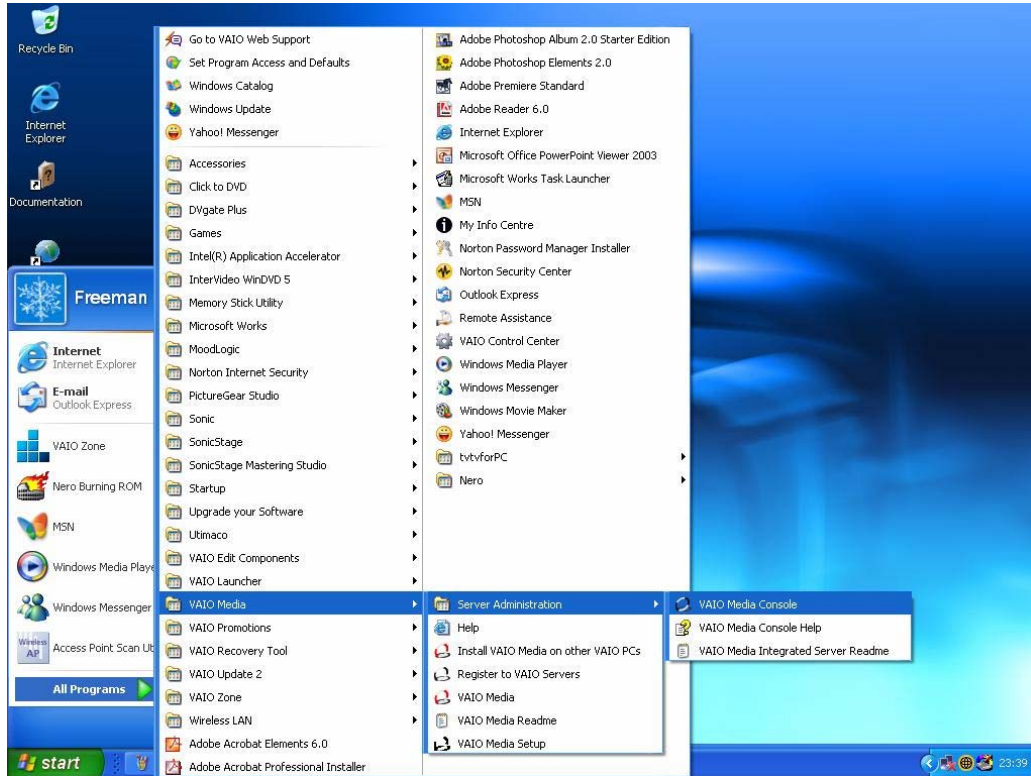
6. Close the window "Properties - Connections to local network (LAN)".

7. Close the "Network connections" window.

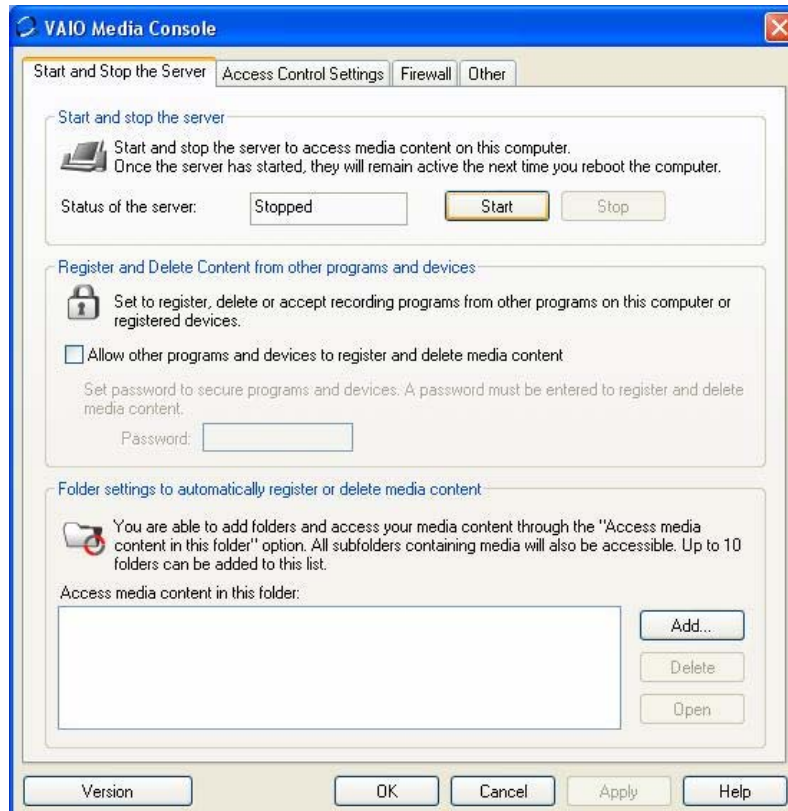
Configuration of Vaio Media - 6

Activation of the sharing of the Vaio Media libraries - A

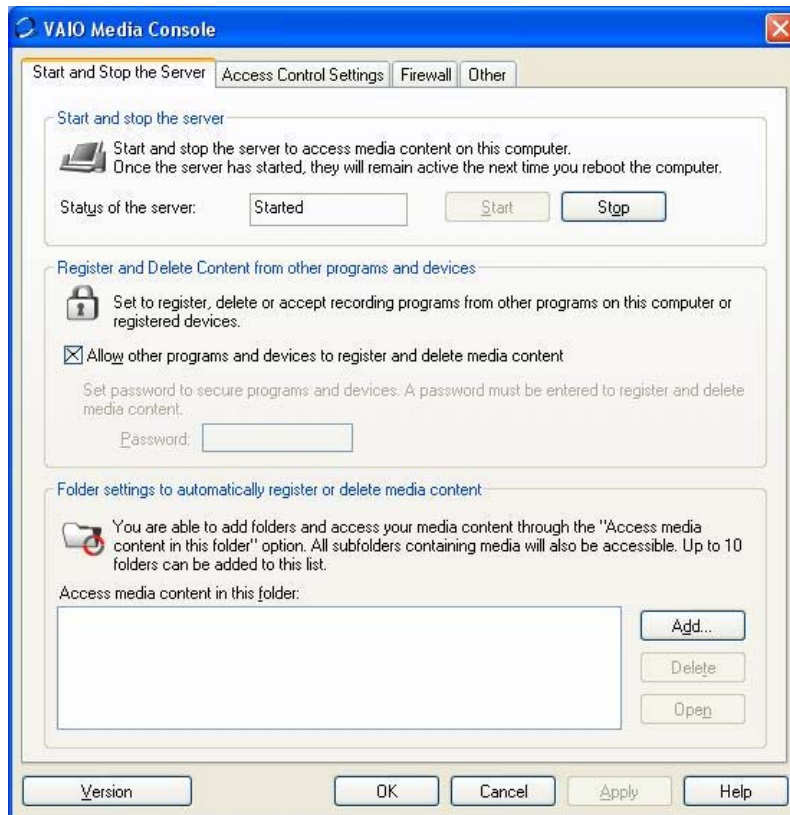
1. From START, ALL PROGRAMMES, VAIO MEDIA, SERVER ADMINISTRATION, select "Vaio Media Console".



2. From "start and shutdown of server" select the button "Start".



Then select “Allow other programmes and other peripherals to register and eliminate multimedia content”.



Before confirming by pressing the “OK” button, think about how you wish to organise the contents which will be displayed on the TV, following what is explained in the next paragraph “Setting of folders for multimedia content”.

B – Setting of the folders for multimedia content

Using Vaio Media Console, it is possible to organise the contents which can be accessed from the TV, by means of Network Media Receiver, adding (up to a maximum of 10) or deleting folders which appear in the menu on the screen.

If, for example, you wish to organise your menu by type of content, you can create three folders on the PC named as follows:

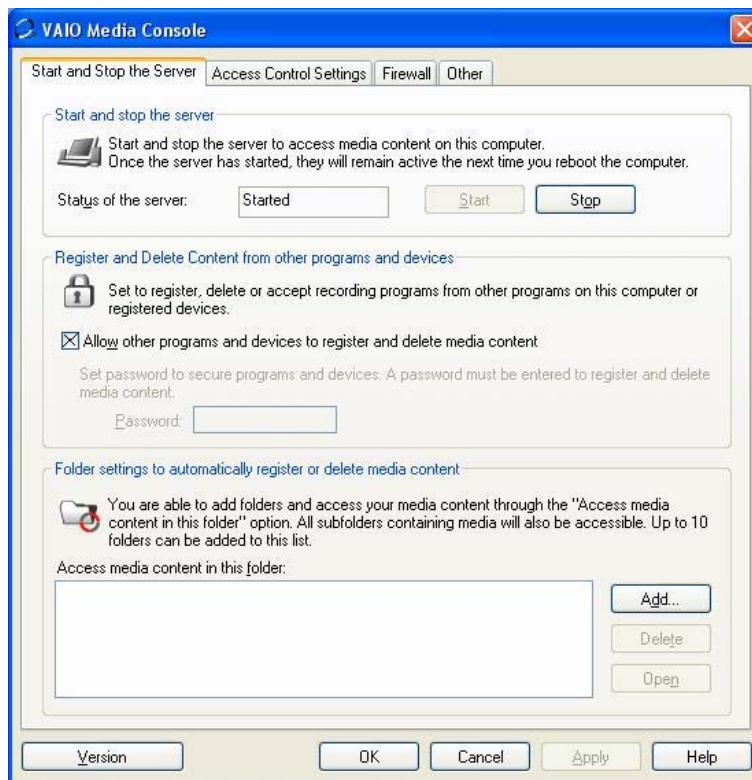
- > Personal photo album
- > Clips
- > My favourite songs

Once created, in the folder “Personal photo album”, you will have your images (jpeg or full photographic albums), while in the “Clips” folder it is possible to store all the video contents (Mpeg2, DivX, imported files from a digital video camera), and in “My favourite songs” audio files (mp3 and wav).

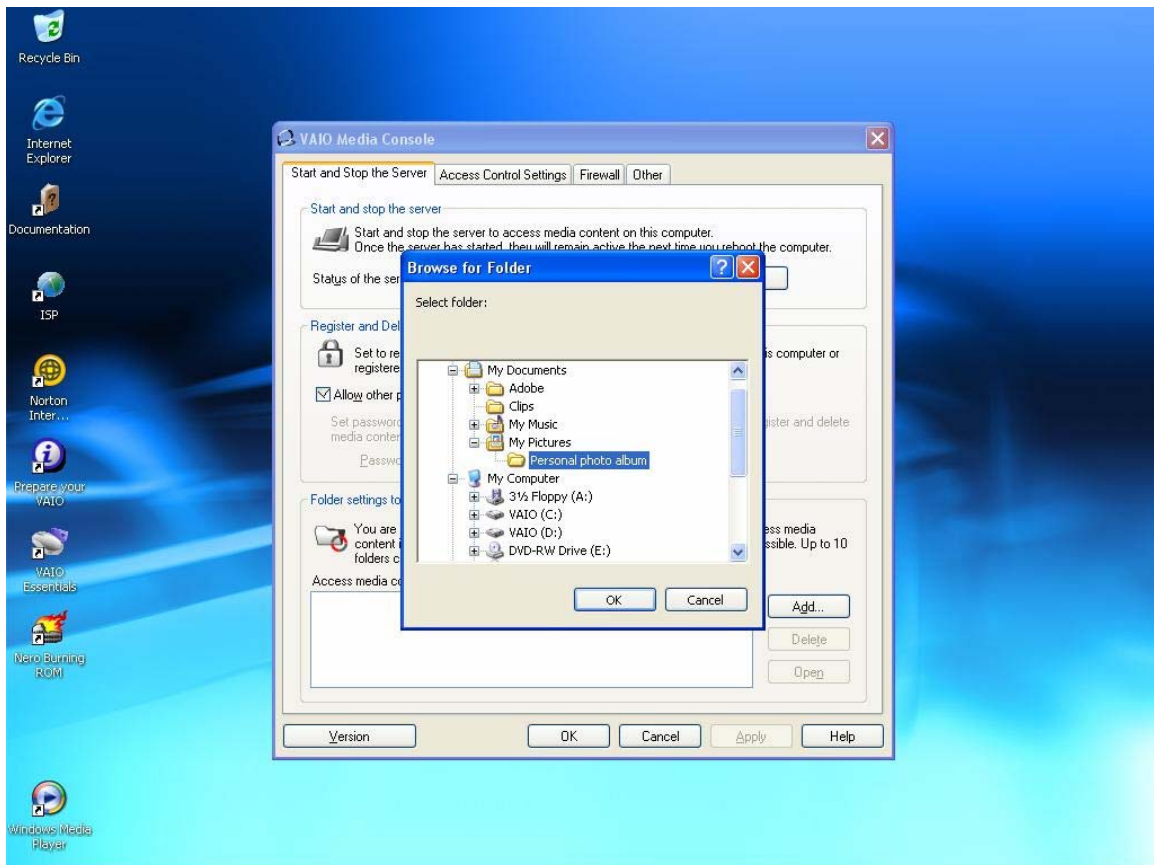
Going back to the window “Vaio Media Console” and pressing the button “ADD”, it is possible to import the folders previously created (up to a maximum of 10).

Starting with the folder “Personal photo album”:

1. Press the button “ADD” in the start-up screen of “Vaio Media Console”.

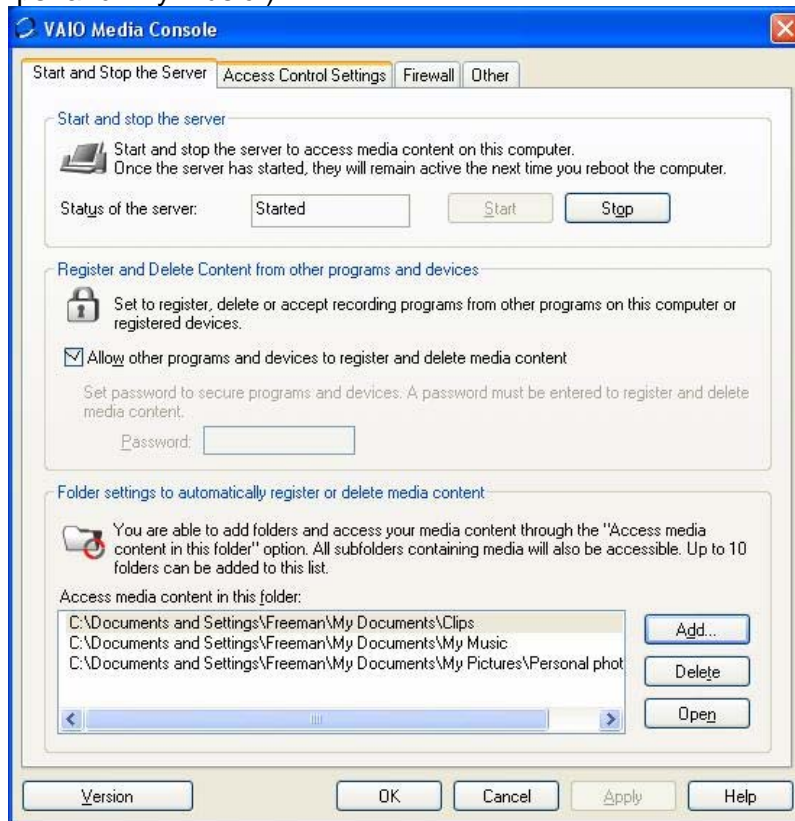


2. Select the path of the desired folder.

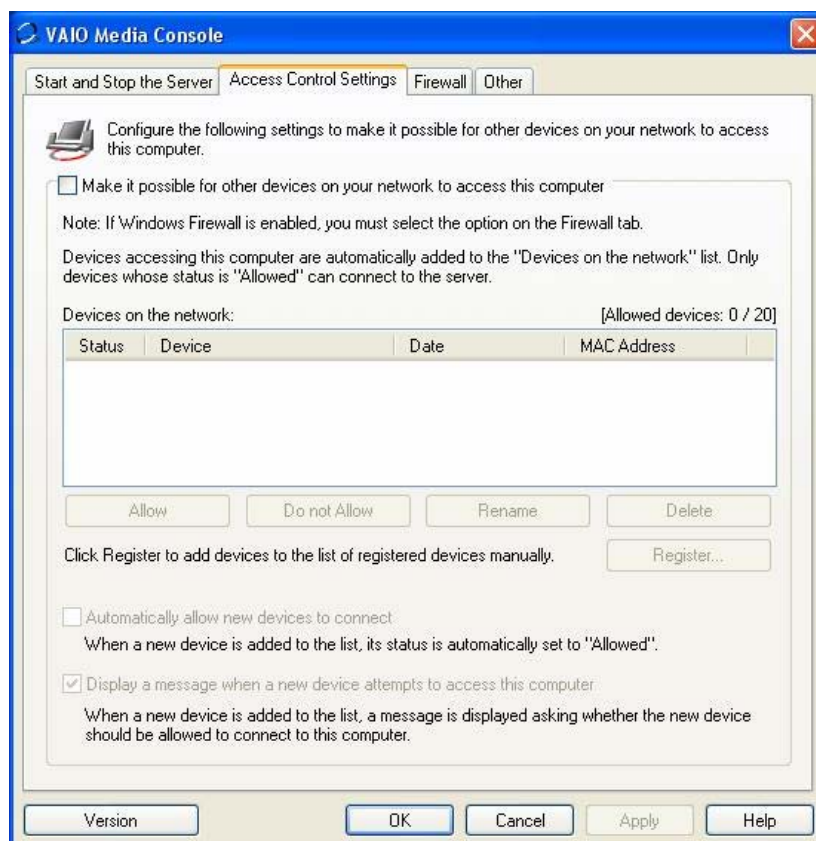


3. Confirm with “OK”.

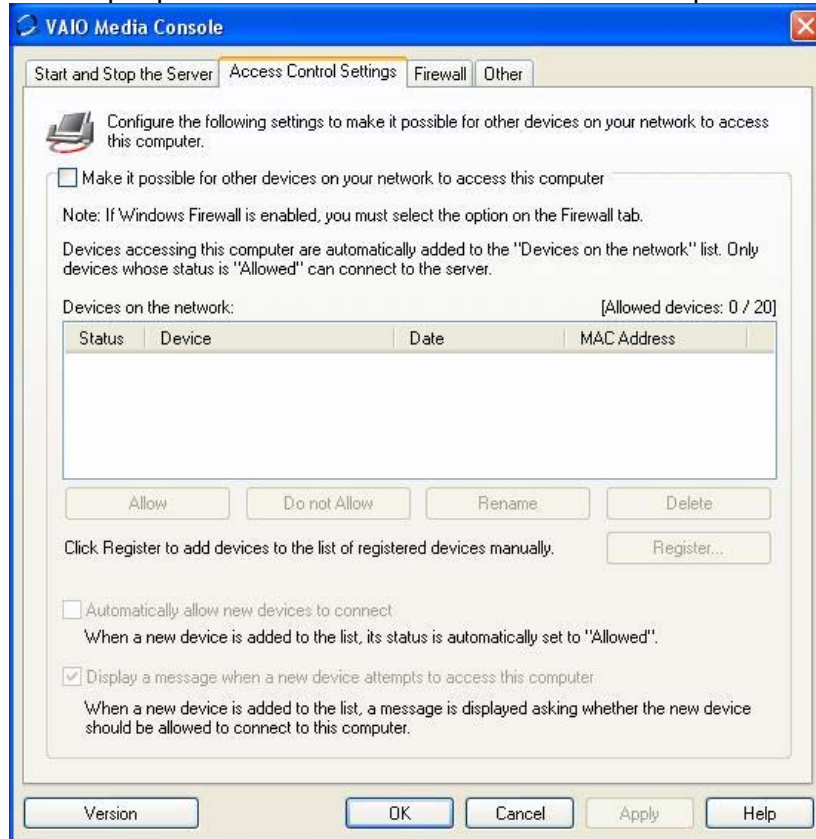
You can repeat the three steps described above, for other folders which you intend to use (in our example “Clips” and “My Music”).



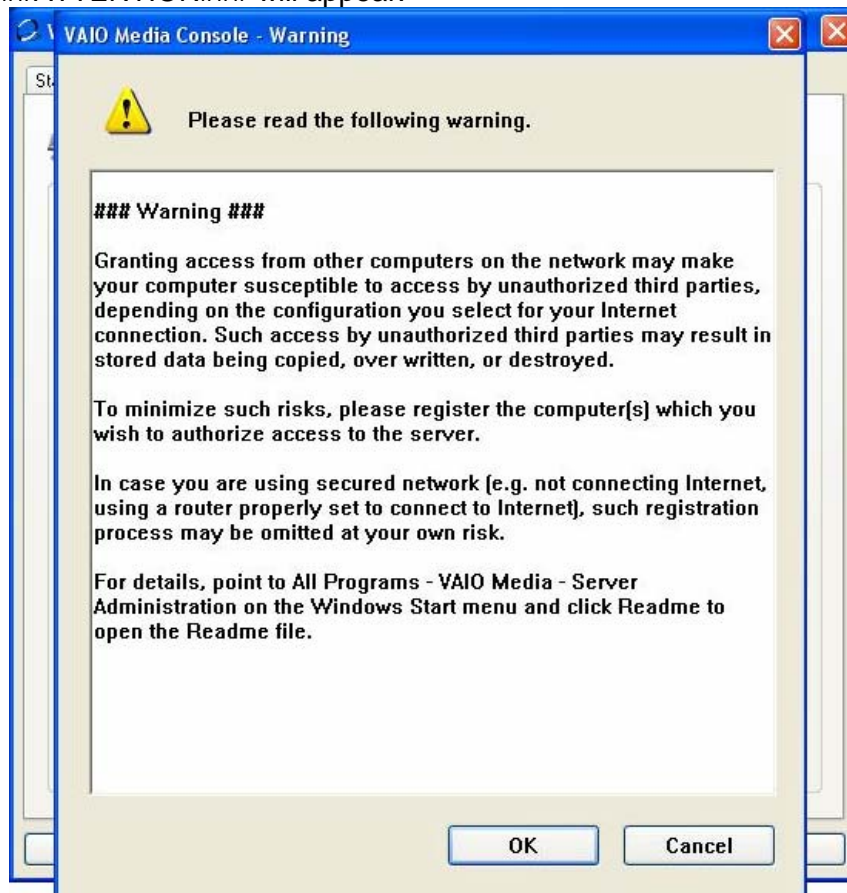
4. Go to “Access control settings”.



5. Select "Allow other peripherals in the network to access this computer".



A message ###ATTENTION### will appear.



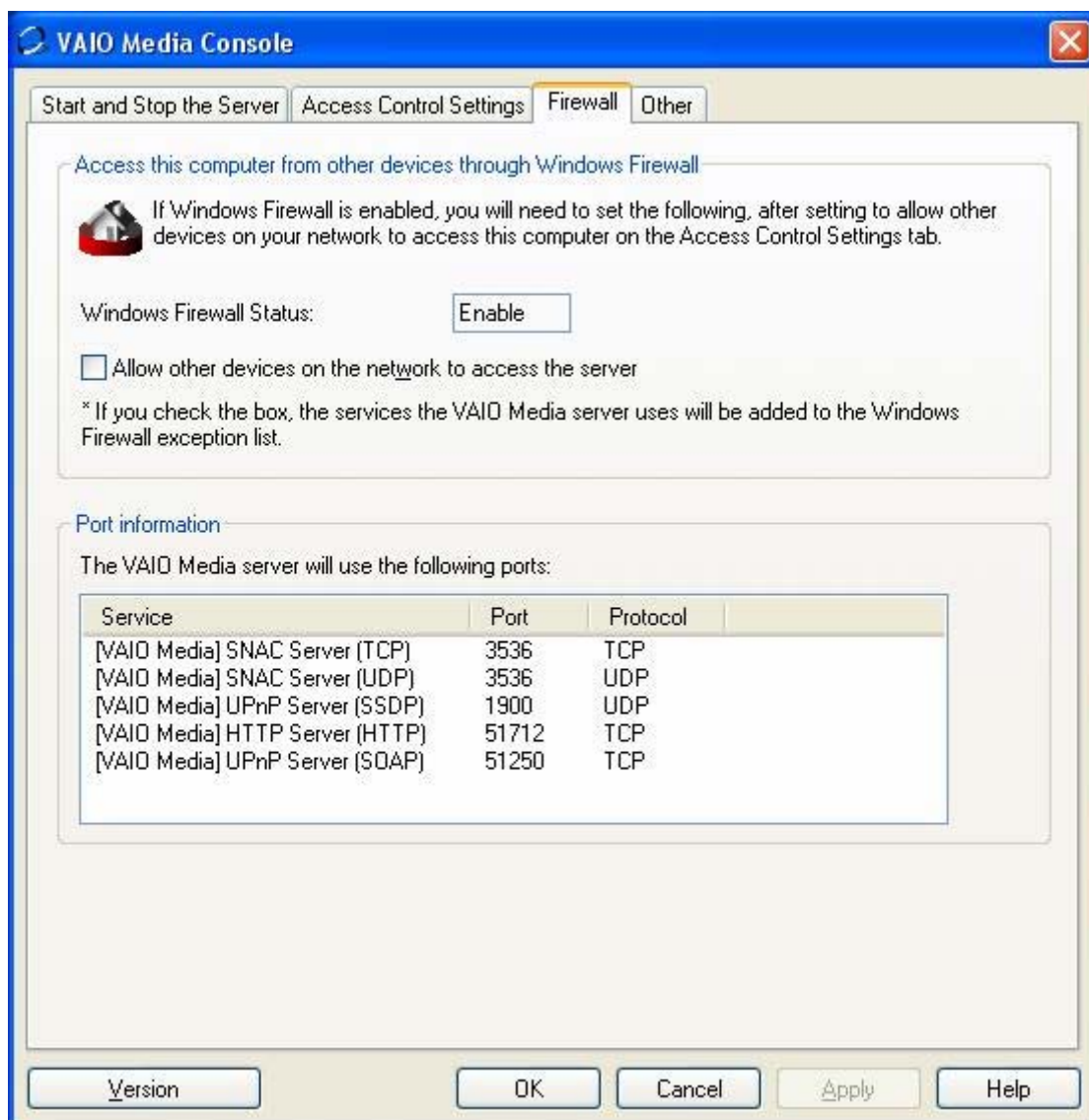
6. Click "OK".

Another message will appear

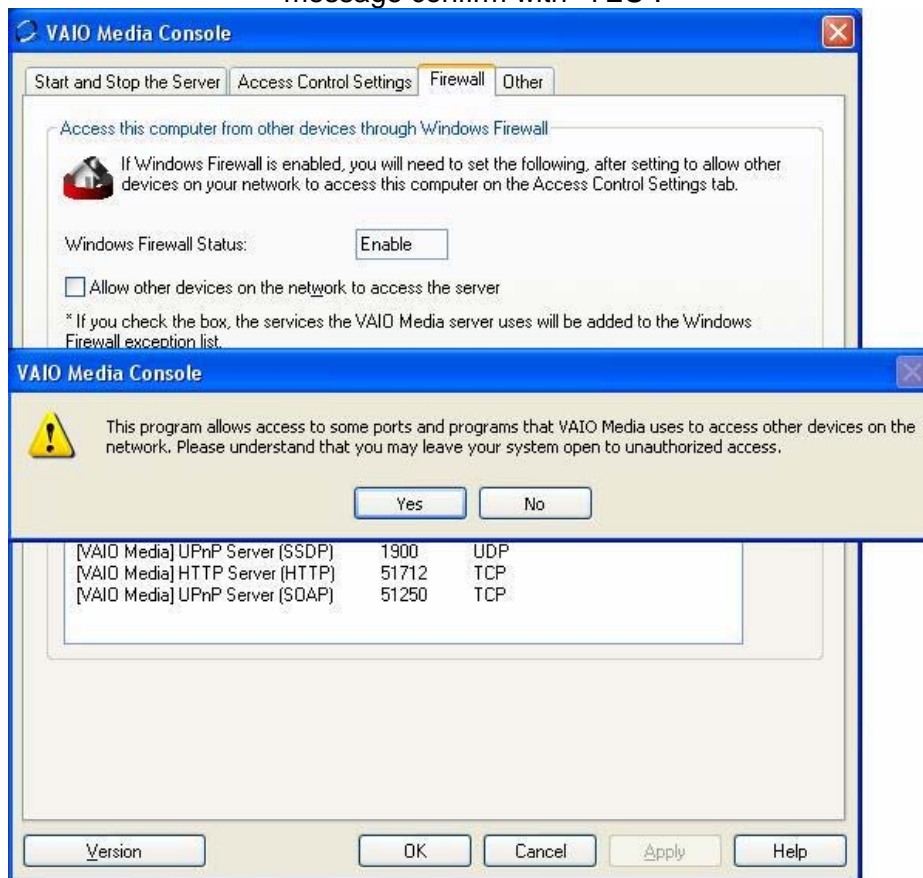


7. Confirm with “OK” and select “Automatically allow all new peripherals to connect”.

8. Click on “Firewall”

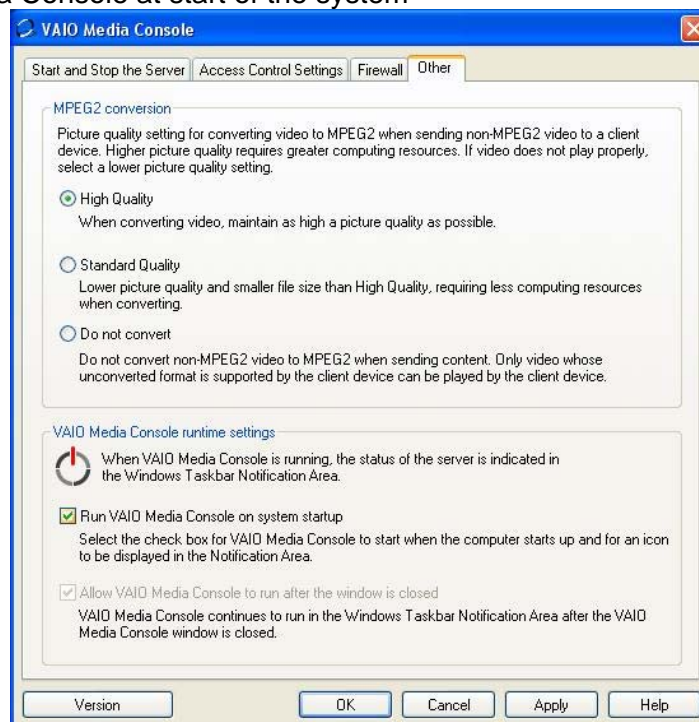


9. Select “Allow other peripherals in the network to access the server”, and on the following message confirm with “YES”.



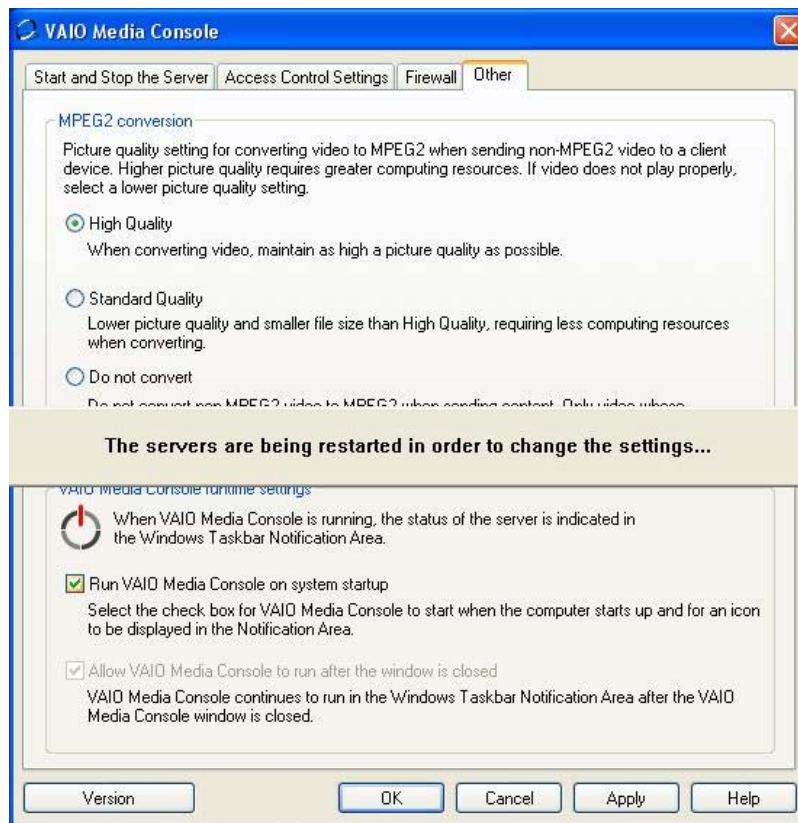
10. Click on the section “Other” and select the options:

- > “High quality”
- > “Run VAIO Media Console at start of the system”

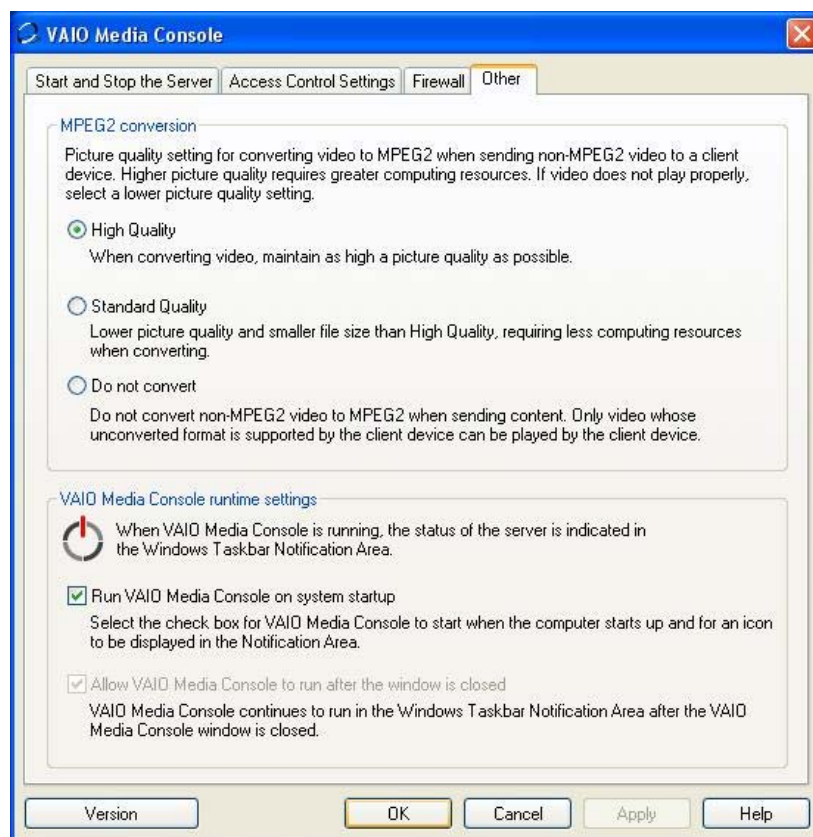


11. In order to implement the changes made so far select “Apply”.

The system restarts the server for the modification of the applications.



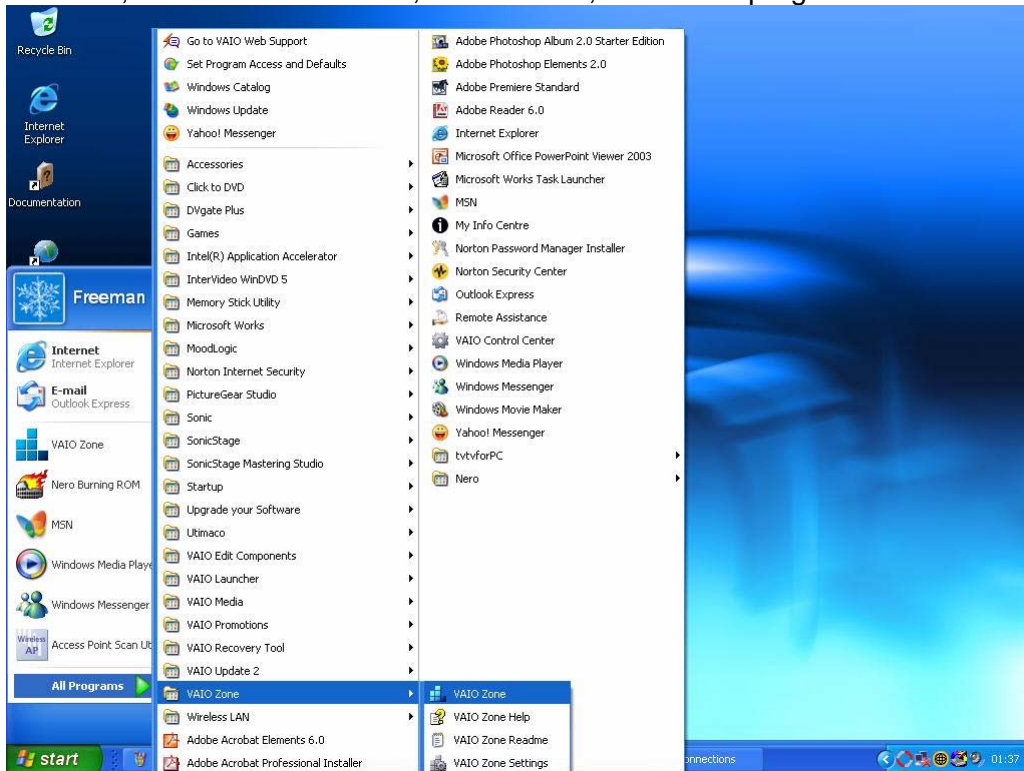
12. Confirm with "OK".



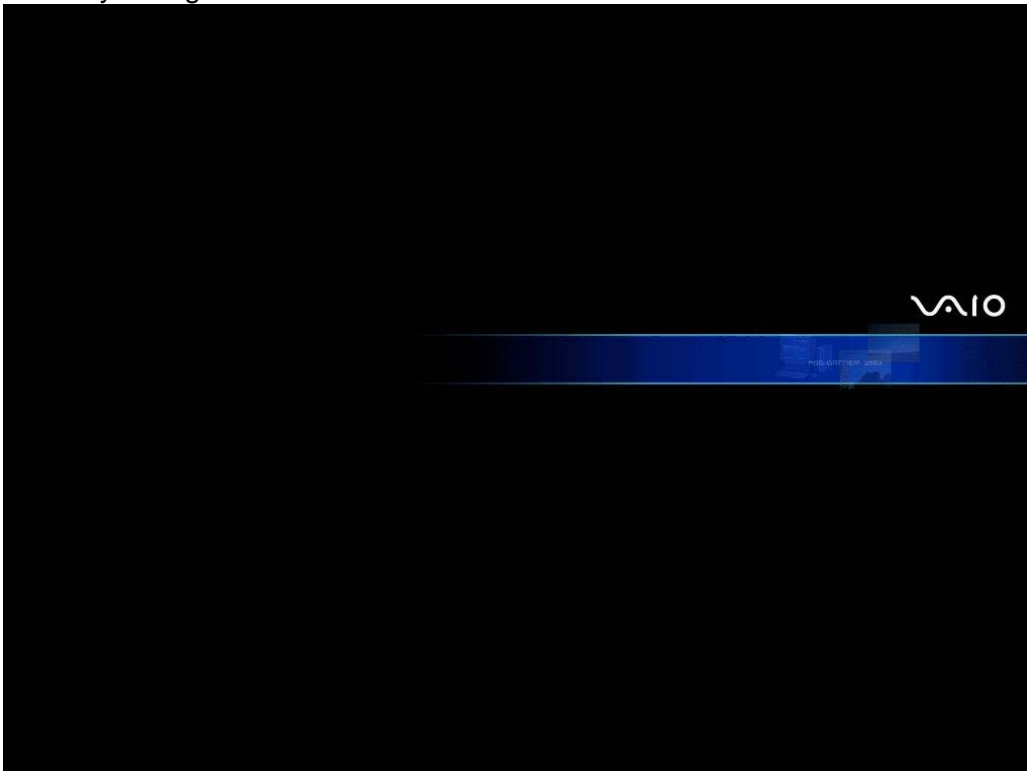
Configuration of Vaio Zone - 7

Configuration of TV Tuner - A

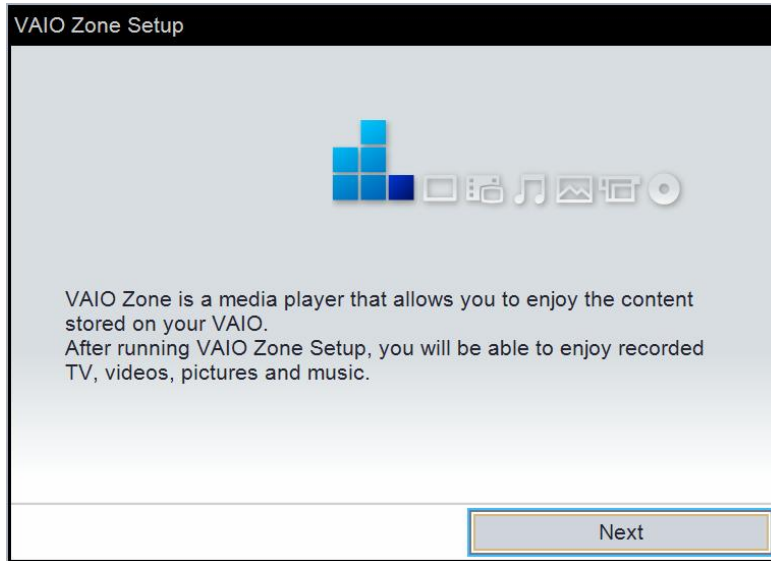
1. From START, ALL PROGRAMMES, VAIO ZONE, launch the programme “Vaio Zone”.



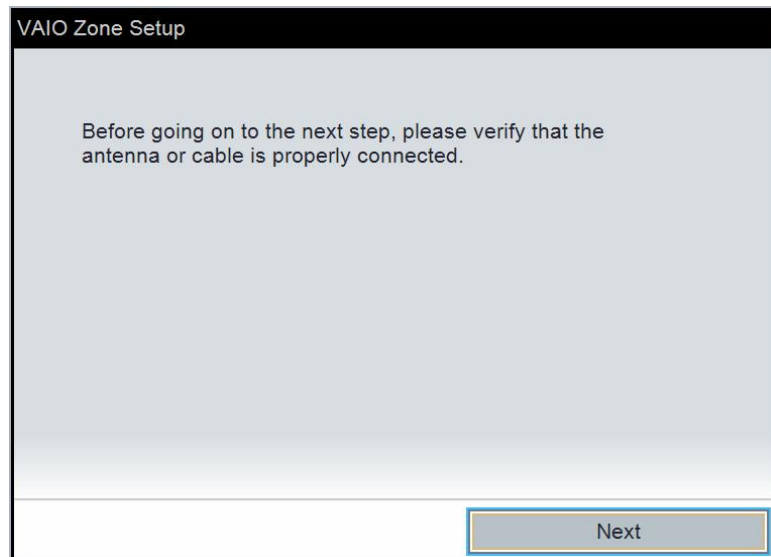
The first time you launch the programme a guided procedure will be launched. This will allow you to correctly configure “Vaio Zone”.



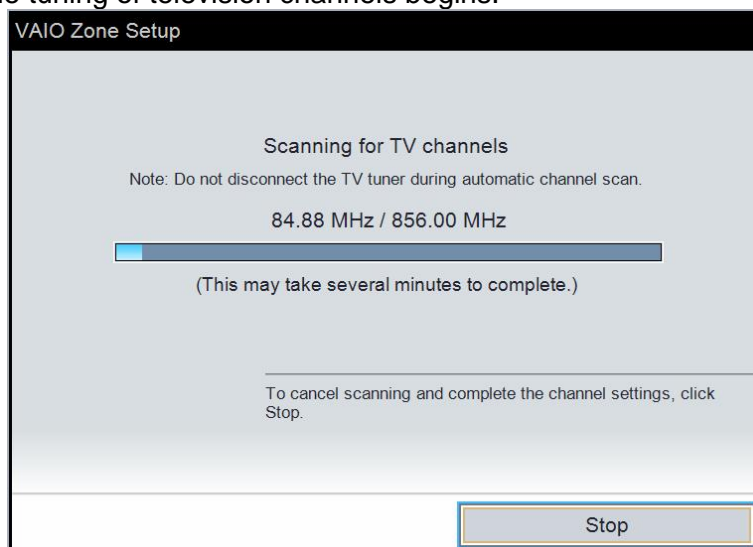
2. Select "Next"



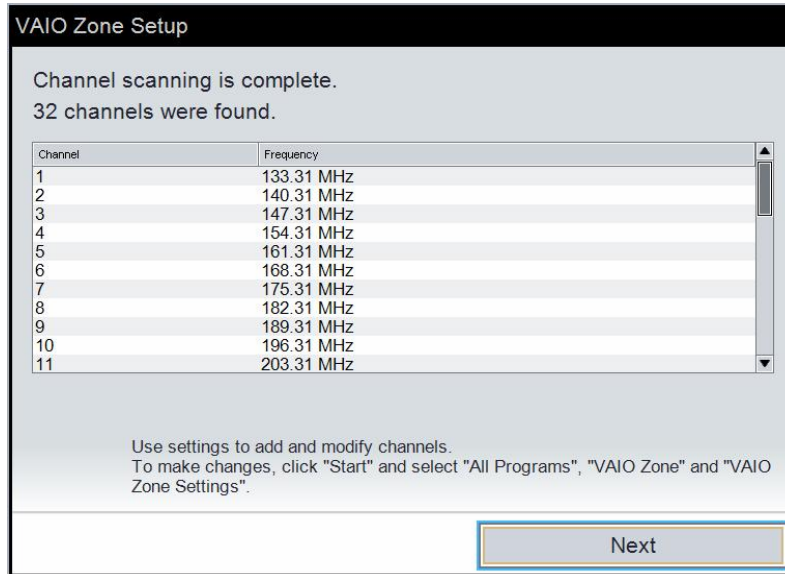
The system will request to check that there is a connection with the TV antenna and, once checked, click "Next".



The search for the tuning of television channels begins.

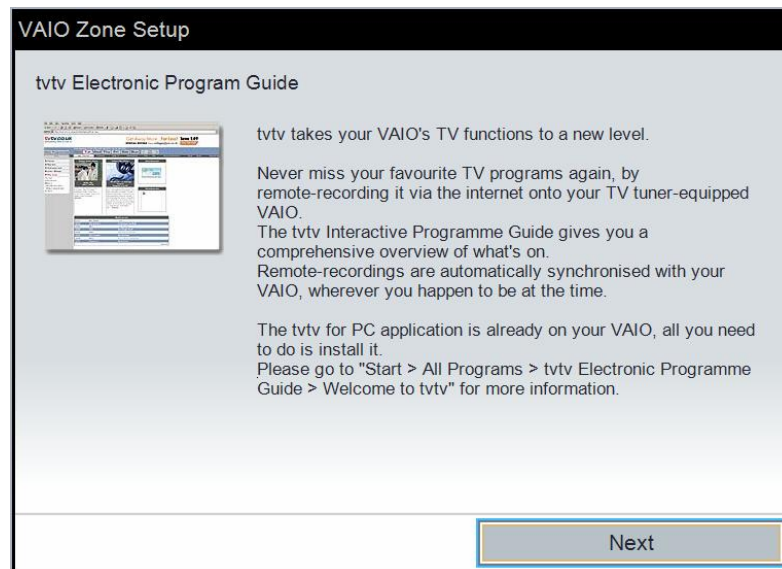


An indicator will display the status of the channels search. Without clicking “Stop”, wait until the system has completed the search and displays a summary of the television channels tuned.



3. Select “Next”

A window will appear to remind you that the “TvTv” software is pre-installed in your VAIO. This software allows the remote-recording of television programmes.

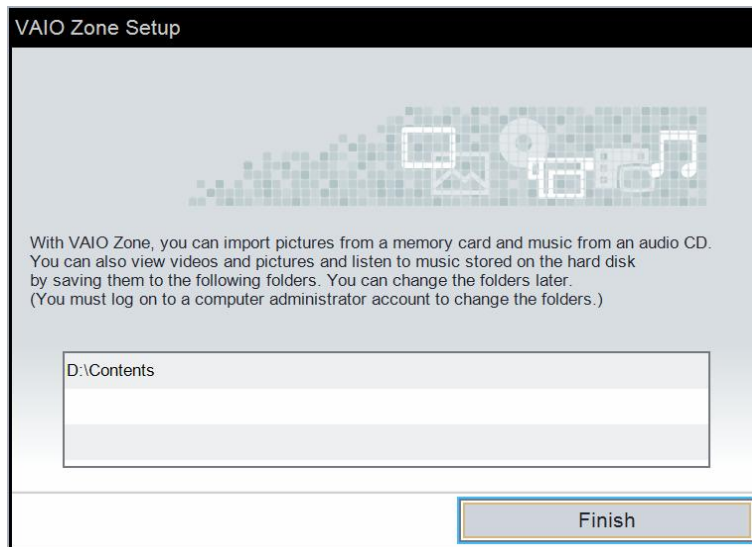


4. Select “Next”

The “Vaio Zone” software uses a pre-defined folder in which all the A/V multimedia contents can be registered.

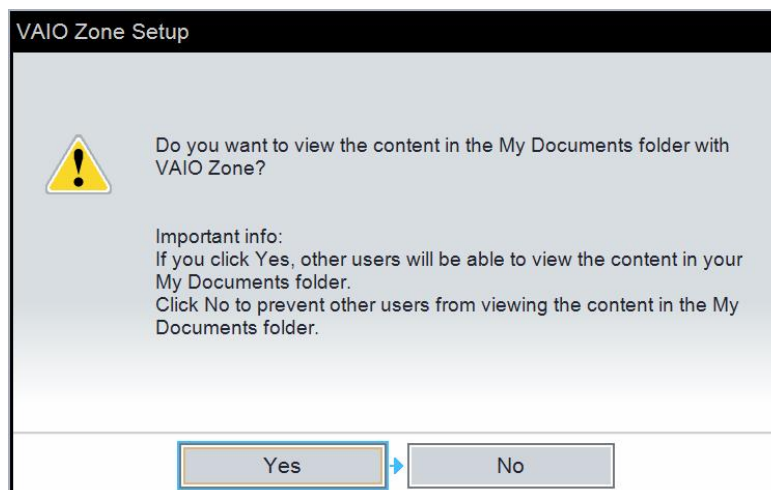
Consequently, by means of the Network Media Receiver, it will be possible to gain easy access to the contents of that folder through the TV itself.

A window will appear reminding you that it is nevertheless possible to add or to modify folders at a later stage.



5. Select “End”

6. A window will appear asking if you wish to allow other users to see the folder contents. Choose “YES”.



After the TV channel tuning is over, the “Vaio Zone” programme will allow you to access the television channels previously stored.

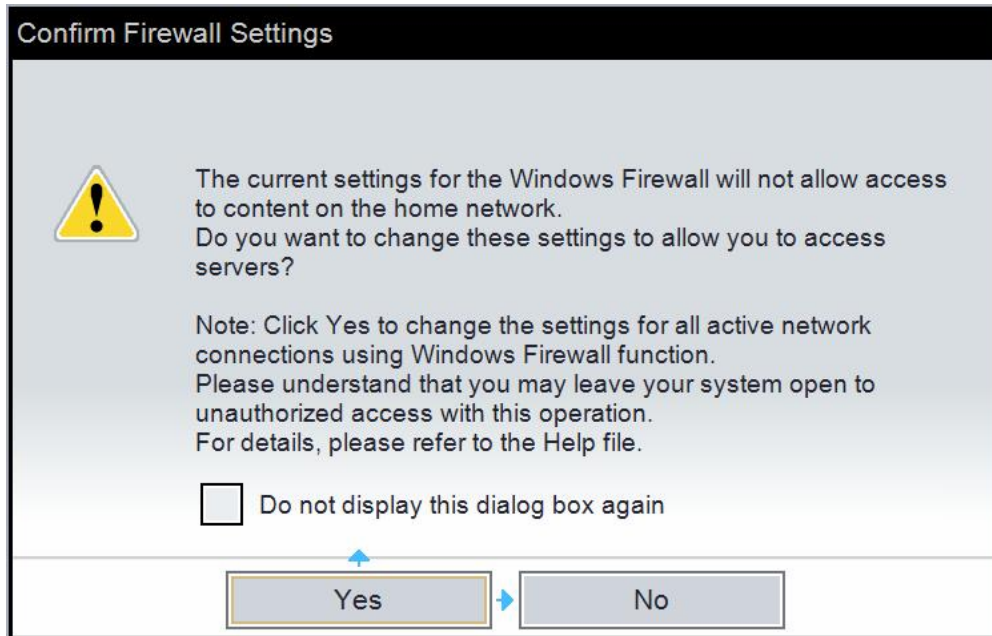
B - Modification of the System Firewall Settings

Vaio Zone can operate in the network, by allowing the sharing of audio/video contents among PCs connected in a network and act as a server towards analogical devices (TV, Hi-Fi) connected to them through the Network Media Receiver. The Network Media Receiver is an intermediary for those connections.

To make it happen, it is necessary that the programme can operate undisturbed, without the intervention of the Firewall of the operating system which considers it a threat which tries to undermine, from outside, the security of the PC or of the network of which it forms a part. For this reason, the software automatically allows to modify the settings of the System Firewall, thus preventing any intervention whatsoever from affecting Vaio Zone in its functions.

When the TV programme tuning procedure is completed, as described in the previous section, on the screen of your PC, besides the user interface of the software, a window will open which will ask you to allow the modification of the settings of the Firewall so as to access the server by means of the Network Media Receiver.

1. Select "YES"

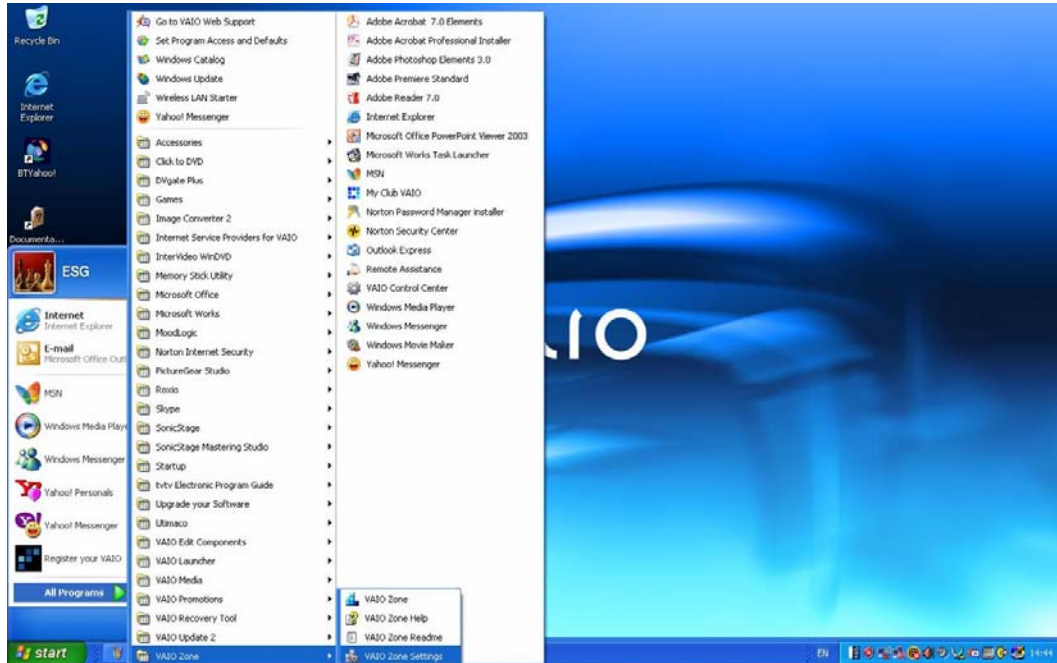


2. Select "OK" to confirm the choice.



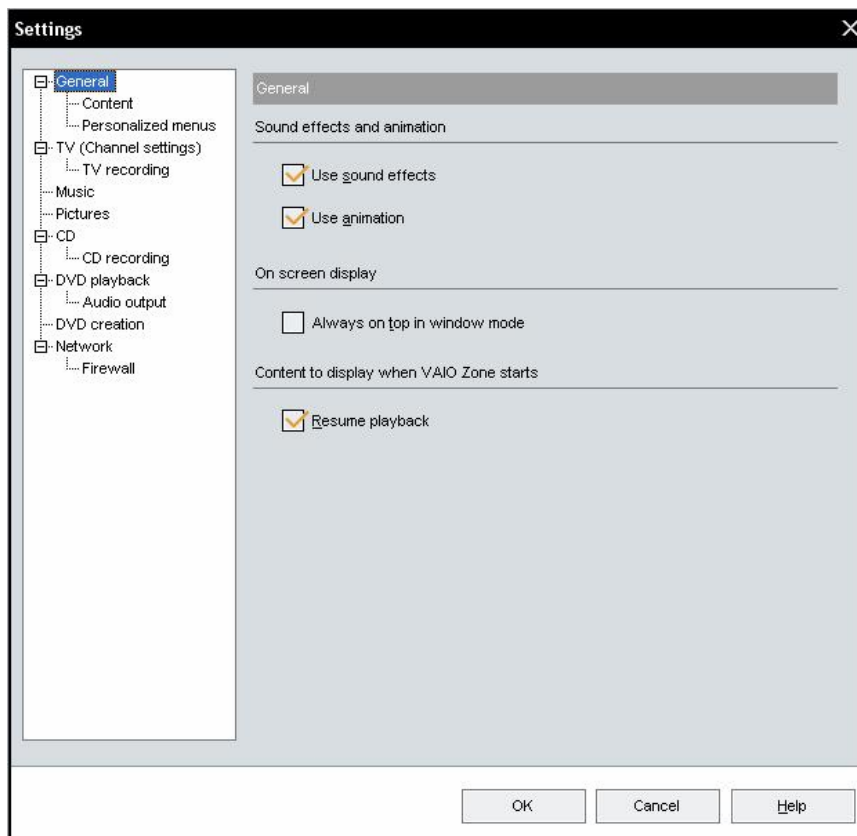
C – Organisation of TV channels

At any time, the user can reorganise and rename the tuned TV channels in Vaio Zone, accessing them from START, ALL PROGRAMMES, VAIO ZONE, and selecting “Settings of Vaio Zone”.

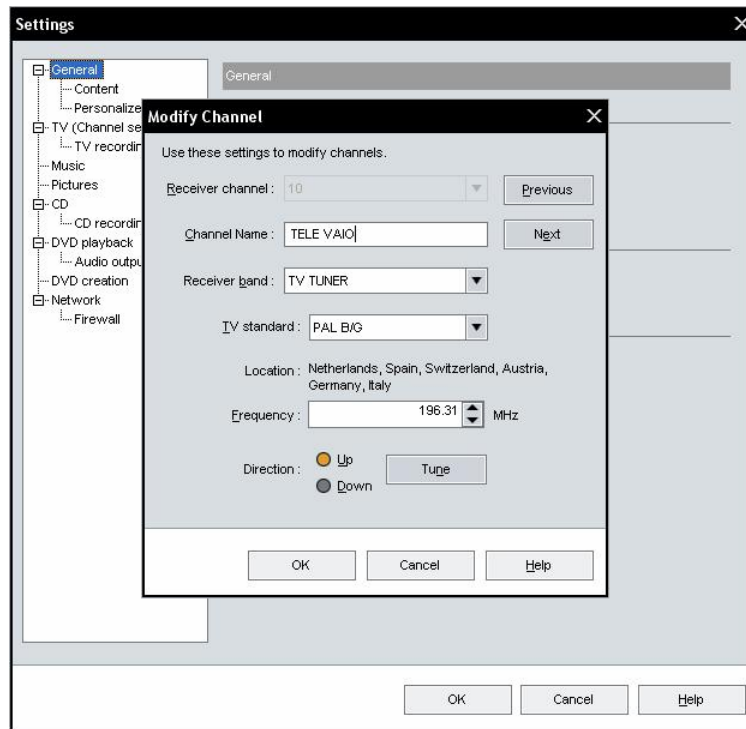


A window will open showing a summary of all the main settings of Vaio Zone.

1. Select "TV (Channel settings)".



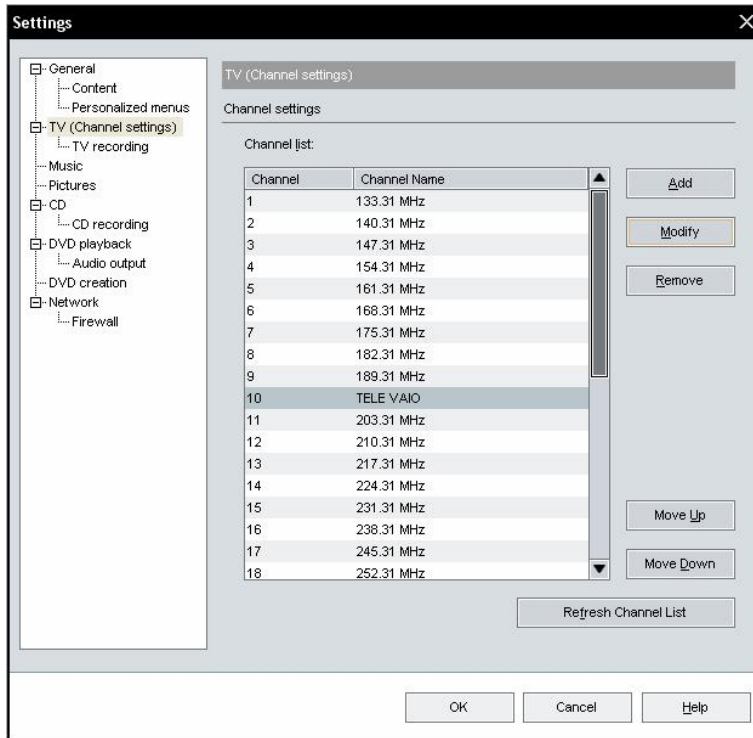
2. In the window which will open, enter the chosen name for the channel selected and confirm with “OK”.



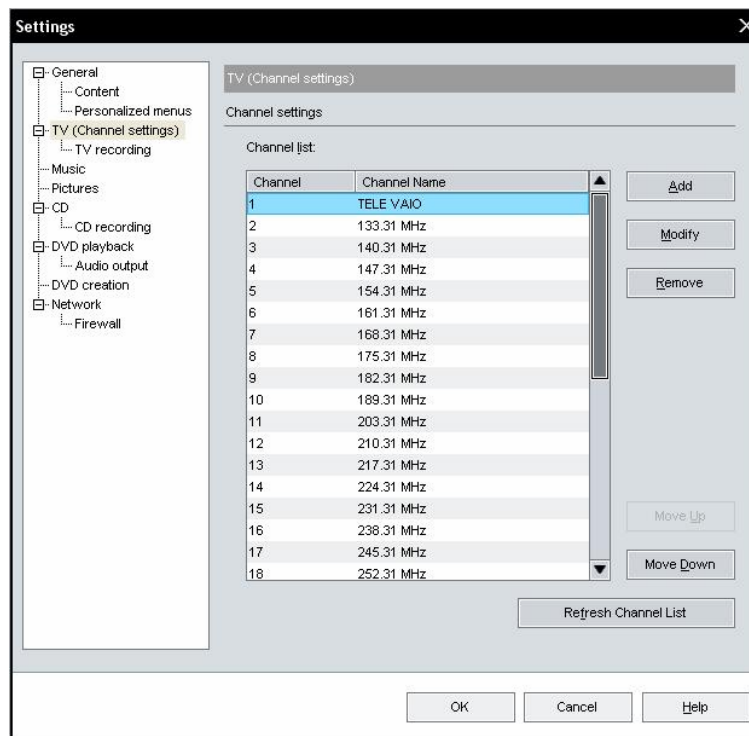
At this point the channel will have the name chosen by you, but its position within the list of channels will be the same as the original one.

The programme allows you to rearrange the sequence of channels according to your preference.

3. By clicking on the buttons “move up” and “move down”, it is possible to change the sequence of channels according to your own liking and requirement.



4. Confirm with “OK” and exit the programme.



8 – Deactivation of Norton Internet Security

If the protection against external intrusions into the system has been activated (Norton Internet Security), it is necessary to deactivate it, so that this finally does not impede the connection between the computer VGC-RA304 and the Network Media Receiver device (VGP-MR100E).

Dragging the mouse pointer onto the icon “Norton Internet Security” located in the Windows toolbar on the bottom-right corner of the screen, right click and select “Deactivate Norton Internet Security”.

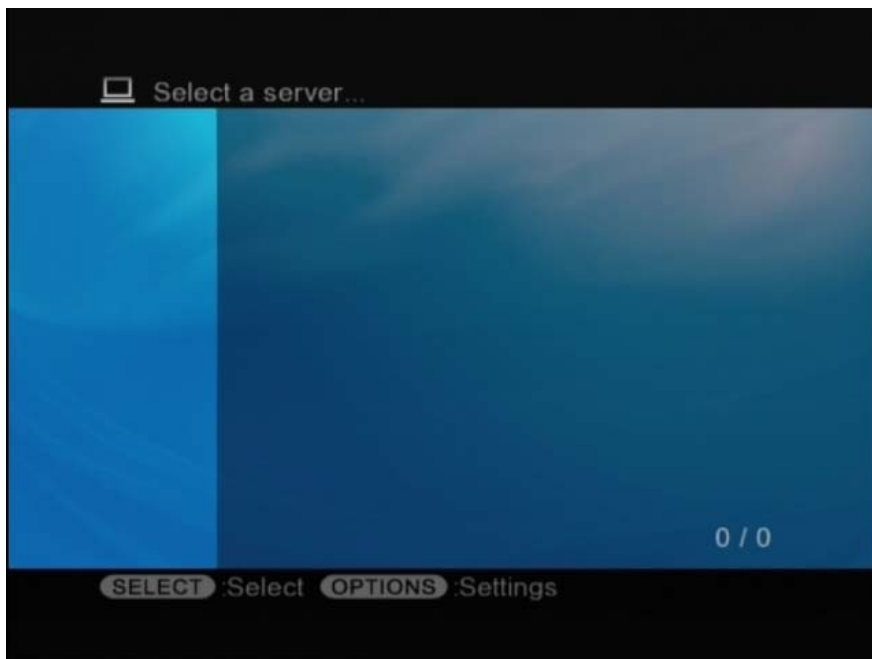


Configuration of the Network Media Receiver - 9

Configuration of the Network Media Receiver (VGP-MR100E)

Ensure that the unit is connected to the TV as described in the section “Connect the Network Media Receiver to the television or to the video recorder”.

1. Switch on the television and go to the video input to which the Network Media Receiver is connected.
2. Pressing the green button marked “POWER” on the remote control (RM-NM100E), switch on the Network Media Receiver unit. The following screen will appear.



3. Press the button marked “OPTIONS” on the remote control (RM-NM100E). This screen will appear.



Note that the system is set up for the English language. It is possible to modify this option, as described in the next section.

B – Changing the language of the system

1. From the “System settings” screen, by means of the directional arrows on the remote control, select “Language Settings”. Confirm with the “SELECT” button.



2. A screen will appear on which the word “English” is selected. By using the directional arrows on the remote control, select “English” and press the “SELECT” button to confirm.



3. Go to “OK” and confirm with the “SELECT” button on the remote control.



You will be back to the main screen for “System Settings”, which is now renamed, in accordance with the chosen language.

Modification of the TV settings - C

The system gives the possibility to set the video quality for the Network Media Receiver according to the type of television set available, either traditional (cathode ray tube) or digital (LCD or plasma).

1. By pressing the “OPTIONS” button on the remote control, the main screen for “System settings” will appear; by means of the directional arrows select the item “TV type” and confirm with the “SELECT” button.



2. In the case of a traditional TV set (with cathode ray tube) select

> Standard Definition TV

Otherwise, in the case of a plasma or LCD television, select

> High Definition TV

then confirm your choice with the “SELECT” button.



3. Go to “OK” and confirm with the “SELECT” button on the remote control. The system will ask you if you wish to keep the new settings. Select “OK” and confirm with “SELECT”.



Modification of network settings - D

By pressing the “OPTIONS” button on the remote control, the main “System settings” screen will appear; by means of the directional arrows select the option “Network settings” and confirm with the “SELECT” button.



In the following screen it is possible to select:

- > Network type
- > IP address
- > LAN Wireless Configuration

2. With the “SELECT” button on the remote control, select “Network type”.



Two types of networks are contemplated and it is therefore possible to choose between two modes:

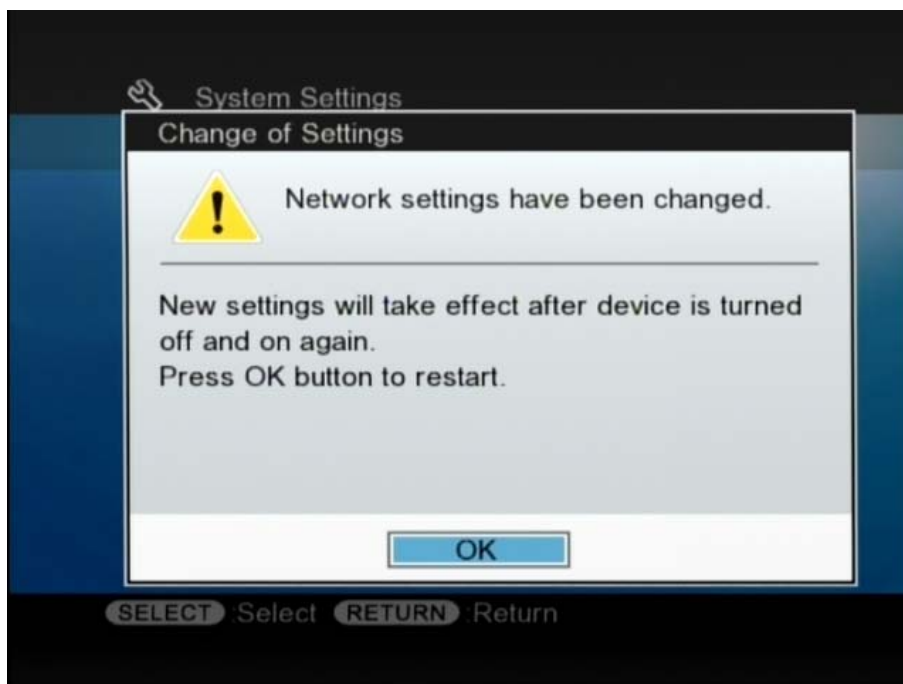
> Wired LAN, that is a direct connection between the Network Media Receiver and the PC, through an Ethernet cable (included in the package).

> Wireless LAN, that is a wireless connection between an Access Point (PCWA-A320) connected to your Vaio PCV-RA304 and the Network Media Receiver.



3. By means of the directional buttons on the remote control, select the wireless LAN option and confirm with the “SELECT” button.

A message will inform you that the new settings will come into effect only after the Network Media Receiver has been switched off, and then switched on again.



4. Confirm with the “SELECT” button on the remote control.

The unit will automatically switch off.

5. Wait until the Network Media Receiver implements the modifications (the “STATUS” led will switch off and on quickly many times), and with the green button “POWER” on the remote control switch the unit on again, only after the “STATUS” led has definitively gone off.

6. By pressing the “OPTIONS” button on the remote control, the main “Systems settings” screen will appear; with the directional arrows select the option “Network settings” and confirm with the “SELECT” button.

7. Having returned to the “Network settings” screen, with the directional buttons on the remote control, select “IP address” and confirm with “SELECT”.



A screen will appear relating to the management of the IP address.

The IP (Internet Protocol) address allows the system to assign a number to the Network Media Receiver, an address which identifies it within the network you have created, regardless of the type of network created (wired or wireless).

The existing software in the Network Media Receiver allows you to carry out the configuration, and therefore the assignment of this identification number, as you think best, with three different options:

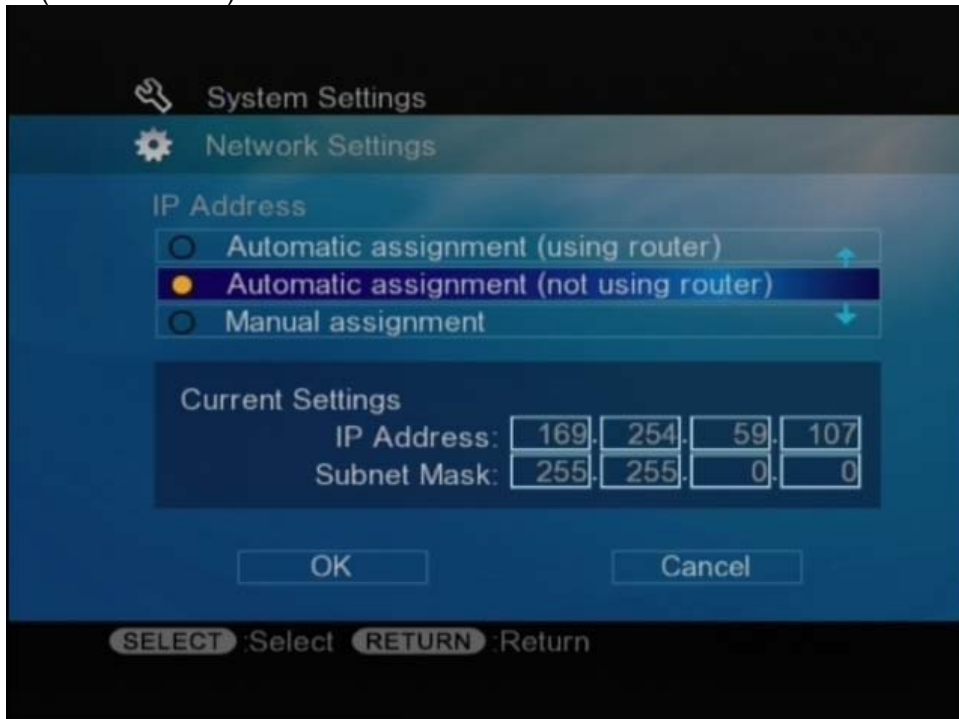
> “Automatic assignation (with router)”, for networks including a router, that is a device which, in automatic mode (DHCP, Dynamic Host Configuration Protocol), univocally assigns an IP address to the Network Media Receiver unit.

> “Automatic assignation (without router)”, for networks in which, although there is no router, the Network Media Receiver will nonetheless be able to be assigned automatically an IP address, an operation which is possible thanks to an internal DHCP server.

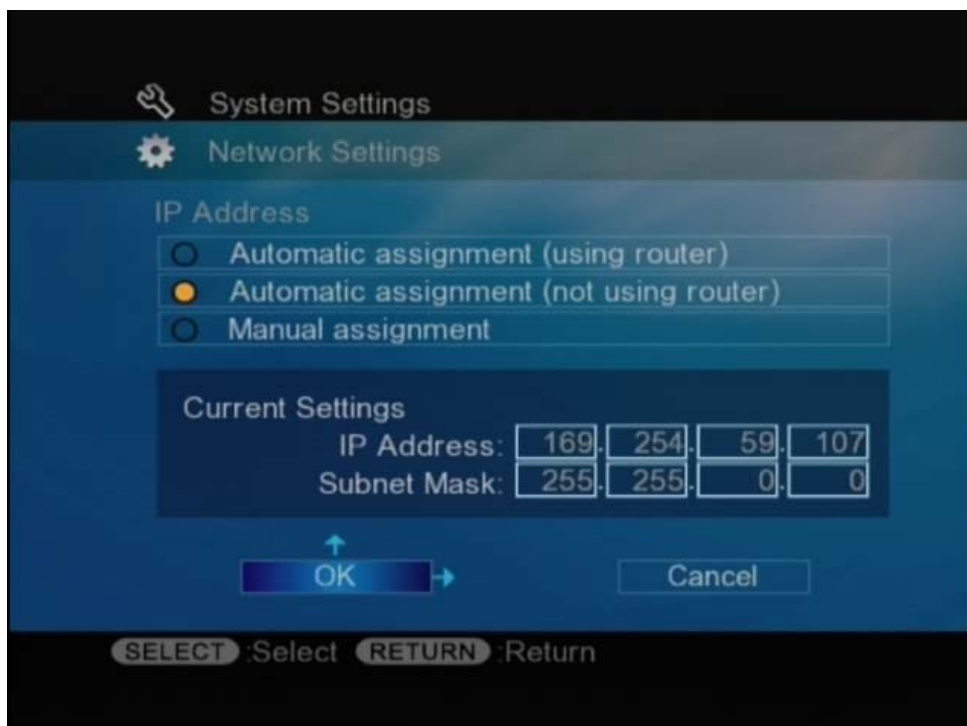
> “Manual assignment”, for networks in which the user decides to assign (in a non-automatic way) an IP address to the Network Media Receiver, in accordance with the IP addresses previously assigned to other devices.

Having already chosen before to configure the Access Point (PCWA-A320) in automatic mode (DHCP) and in the event of not having a router, the second option must be selected.

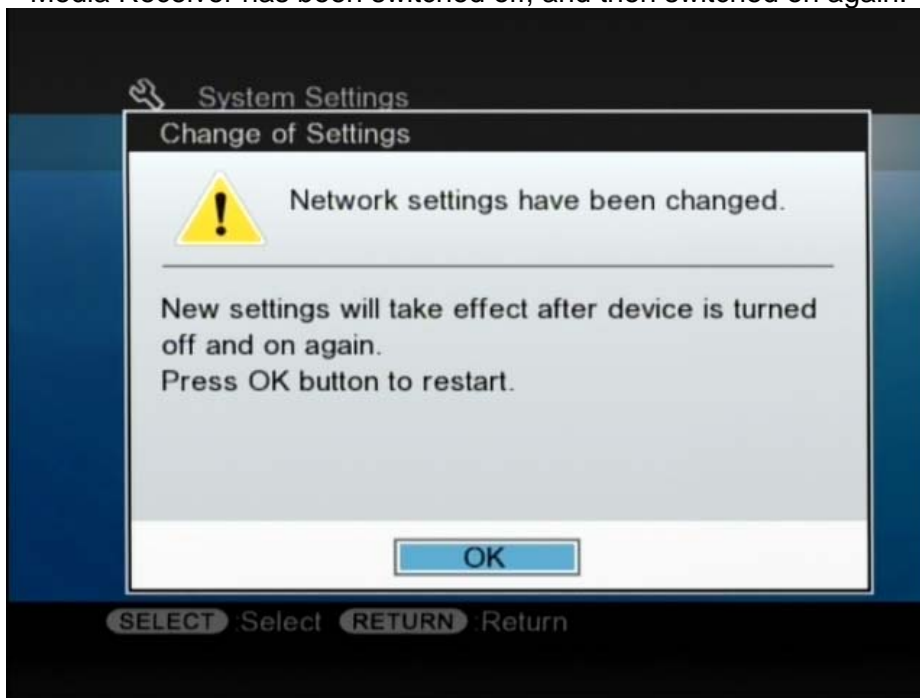
8. Using the directional arrows on the remote control, select the option “Automatic assignment (without router)” and confirm with “SELECT”.



9. Using the directional arrows on the remote control, select “OK” and confirm with “SELECT”.



A message will inform you that the new settings will come into effect only after the Network Media Receiver has been switched off, and then switched on again.



10. Confirm with the “SELECT” button on the remote control. The unit will switch off automatically.

11. Wait until the Network Media Receiver implements the modifications (the “STATUS” led will switch off and on quickly many times) and, with the green button “POWER” on the remote control, switch the unit on again, only after the “STATUS” led has definitively gone off.

12. By pressing the “OPTIONS” button on the remote control, the main screen “System settings” will appear; using the directional arrows, select the option “Network settings” and confirm with the “SELECT” button.

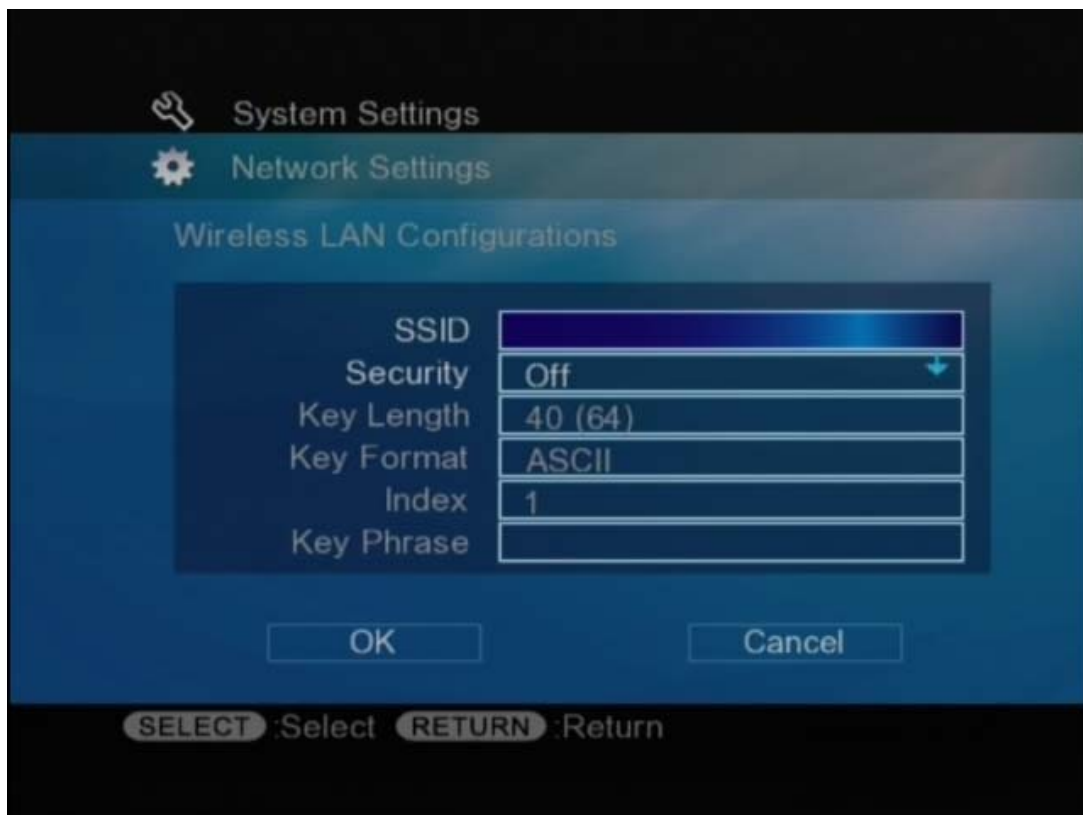


13. Returning to the “Network settings” screen, by using the directional arrows on the remote control, select “Wireless LAN configuration” and confirm with “SELECT” (as shown in the image above).

The screen below will appear. This will allow you to configure the Network Media Receiver so that it becomes part of the same wireless network previously created during the configuration of the Access Point (PCWA-A320).

As you will notice, the page contains the same options which have already been examined and configured earlier on for the Access Point and to which you should refer.

In fact, all the devices which have to belong to the same WLAN (wireless network), must necessarily have the same SSID (Service Set Identifier), only in this way will the different pieces of equipment be able to communicate among themselves.

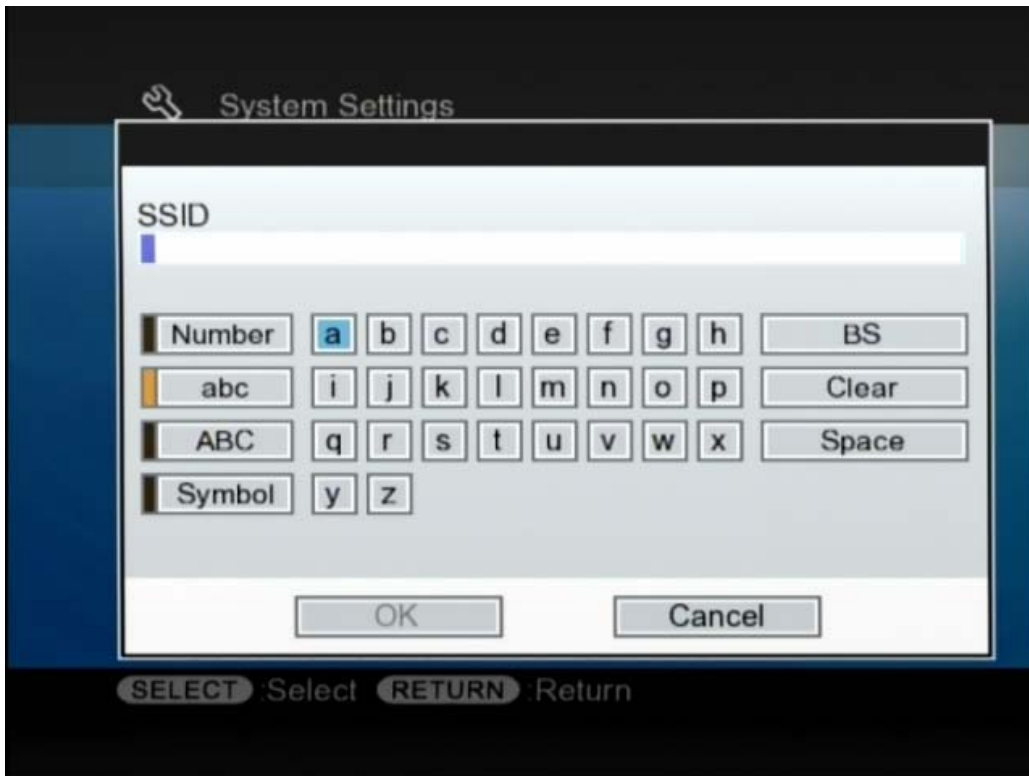


14. Using the directional arrows on the remote control, go to “SSID” and confirm with “SELECT”.

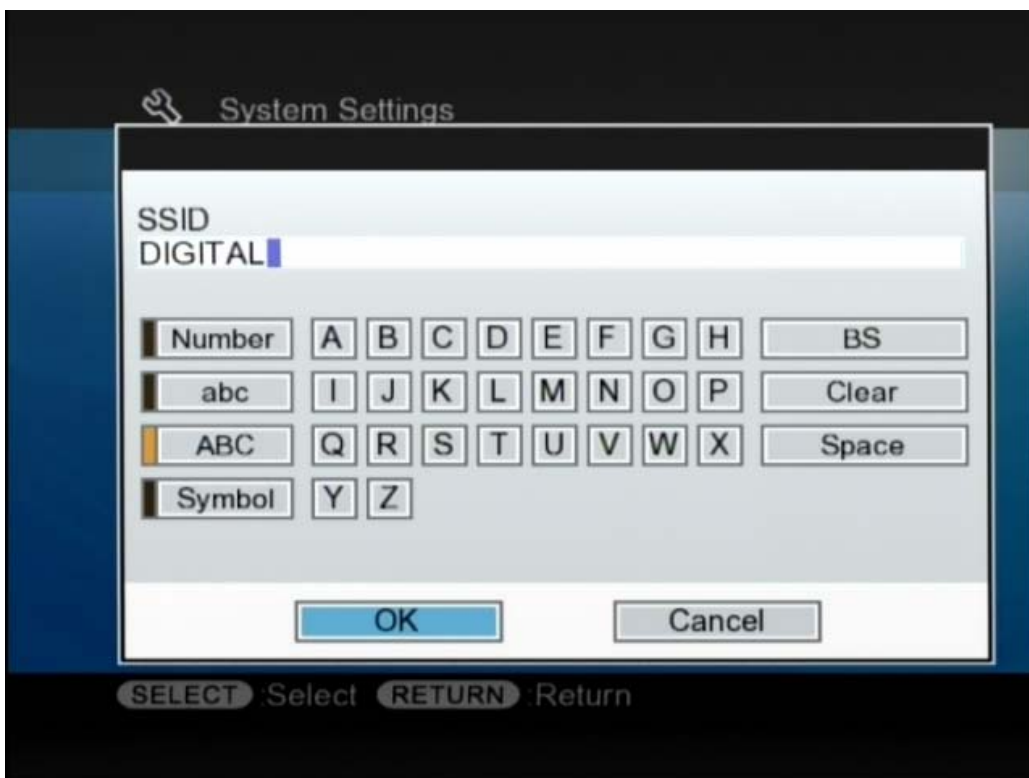
A screen will appear with a virtual keyboard, with which the same SSID already chosen during the configuration of the Access Point can be entered.

Having previously chosen an SSID composed of characters in block capital (DIGITAL), it will be necessary to activate the “block capitals” key first (the ABC case).

15. Using the directional arrows on the remote control, select “ABC” on the left hand side of the virtual keyboard and confirm by pressing “SELECT”.



15. It is now possible to enter on the keyboard, confirming every single character entered with “SELECT”, the same word which has already been chosen as SSID for the Access Point (that is DIGITAL).



16. With the “SELECT” button select “OK” to confirm the setting.

The system will go back to the main “Wireless LAN configuration” page and, at this point you will note that the name which has been assigned to SSID is registered.



17. Using the directional arrows on the remote control, go to the option “Protection” and press the “SELECT” button.

The button becomes blue.



18. Using the directional arrows on the remote control, modify the content by selecting “WEP” (Wired Equivalent Privacy) and confirm with the “SELECT” button.



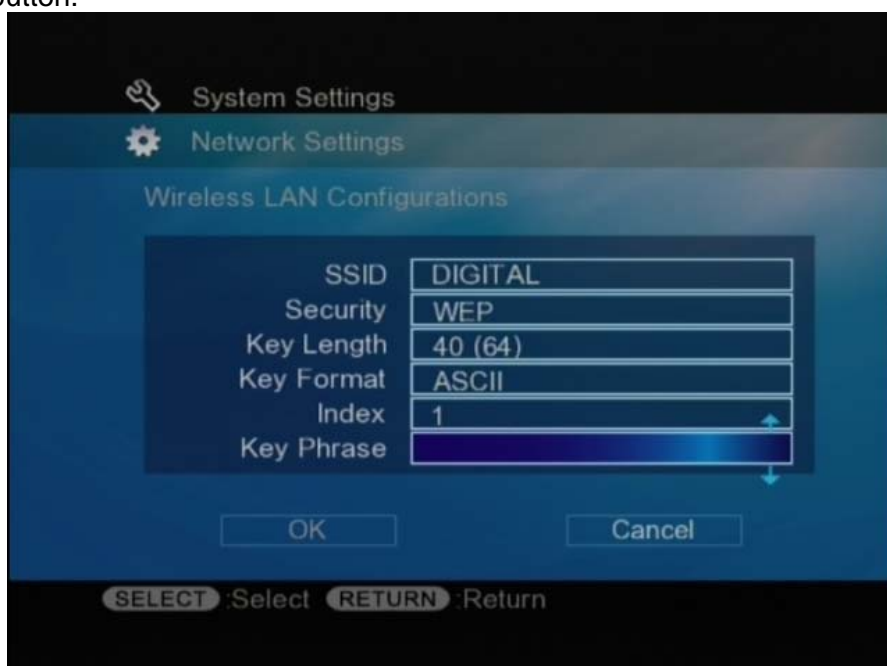
The button will once again become blue.

19. In accordance with whichever choice has been made for the Access Point, confirm the three following items.

- > “Key length”, leave unchanged 40 (64)
- > “Key format”, leave unchanged ASCII
- > “Index”, leave unchanged

The final remaining option “Key phrase” corresponds to the password used to access the network, a password chosen earlier on during the Access Point configuration with the option “Wep key” (see “Configuration of the Access Point” 5 B).

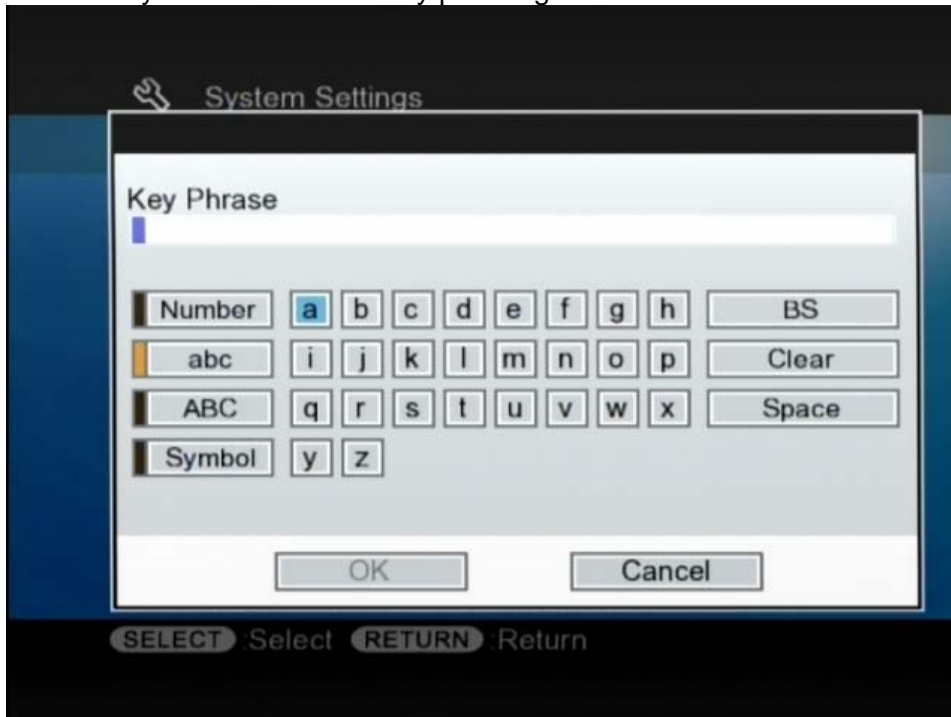
20. Using the directional arrows on the remote control, go to “Key phrase” and press the “SELECT” button.



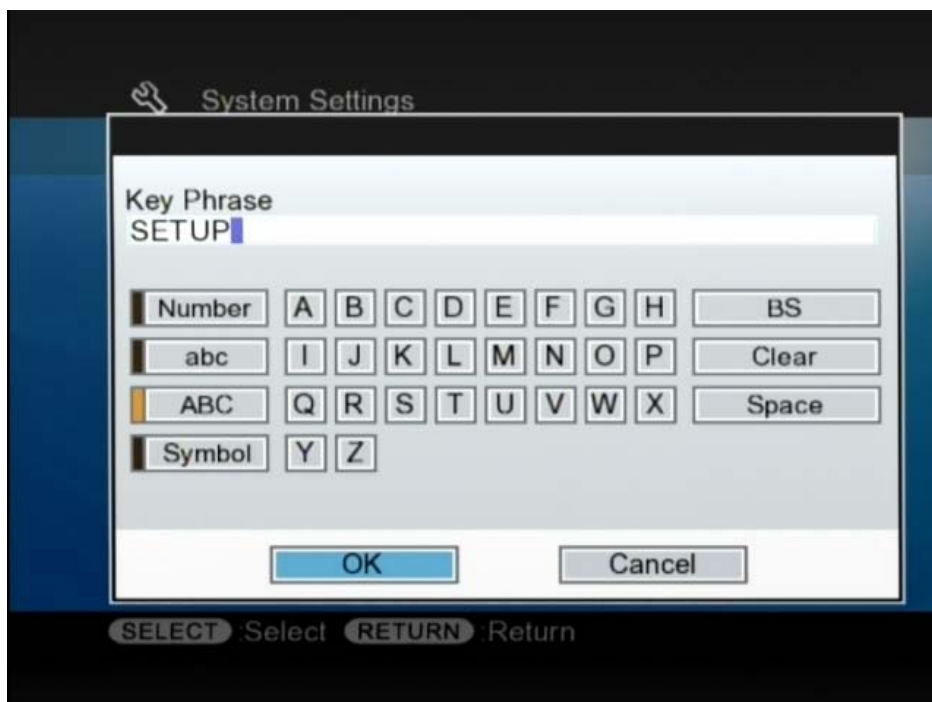
The same screen seen before representing a virtual keyboard will appear.

Having chosen already via the Access Point a “Key phrase” composed of characters in block capital (SETUP), it will be necessary to activate the “block capitals” key first (the case ABC).

21. Using the directional arrows on the remote control, select the case “ABC” on the left hand side of the virtual keyboard and confirm by pressing “SELECT”.

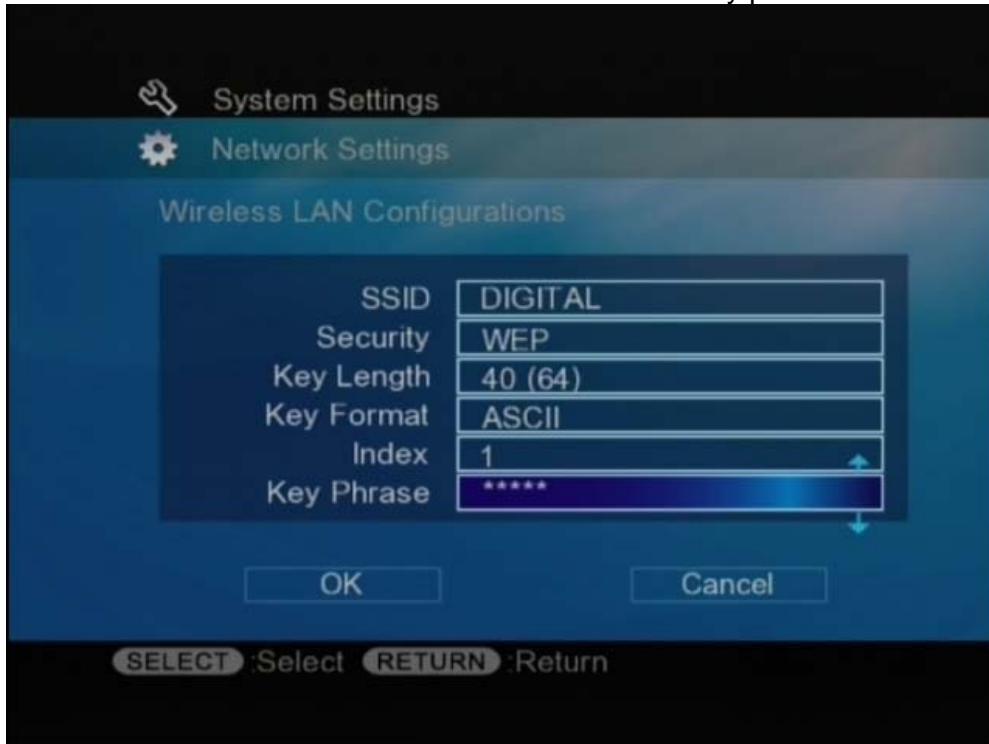


22. It is now possible to enter on the keyboard, confirming every single character with “SELECT”, the same word which has been chosen as “Wep key” on the Access Point (that is DIGITAL).



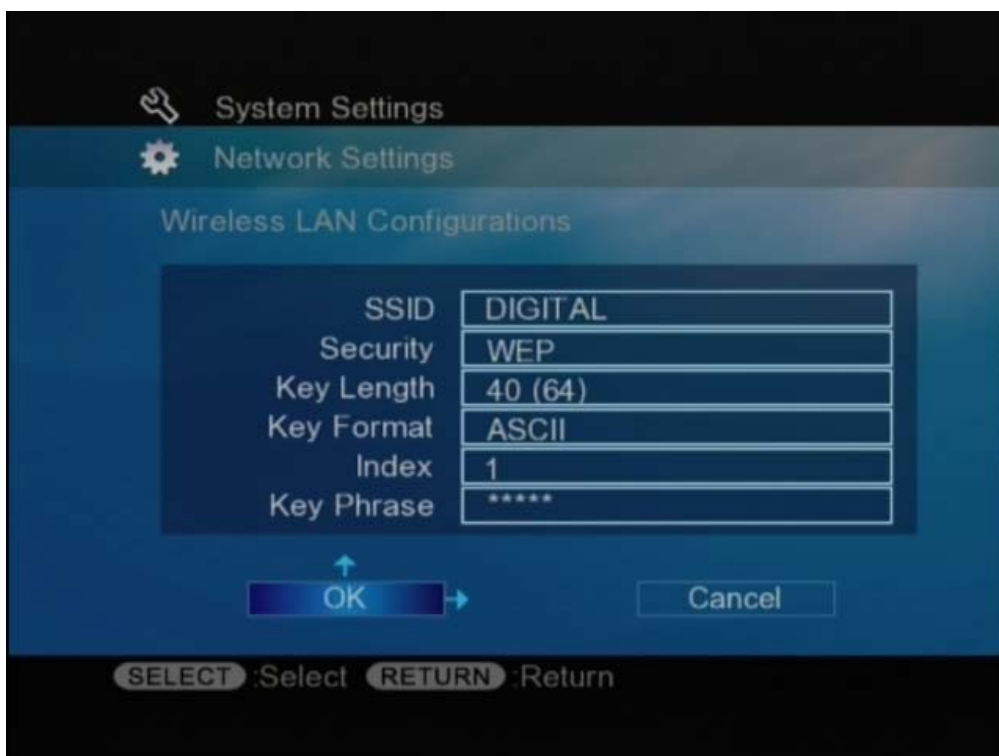
23. With the "SELECT" button select "OK" to confirm the setting.

The system will go back to the main page for "Wireless LAN Configuration", and you will note at this point that asterisks have been inserted to conceal the "key phrase".



If all the data entered in this section are correct, the entire process can be confirmed by selecting "OK" and by pressing the "SELECT" button.

24. A message will inform you that the new settings will come into effect only after the Network Media Receiver has been switched off, and switched on again.





25. Confirm with the "SELECT" button on the remote control.

The unit will switch off automatically.

26. Wait until the Network Media Receiver implements the modifications (the "STATUS" led will, switch off and then quickly switch on again many times).

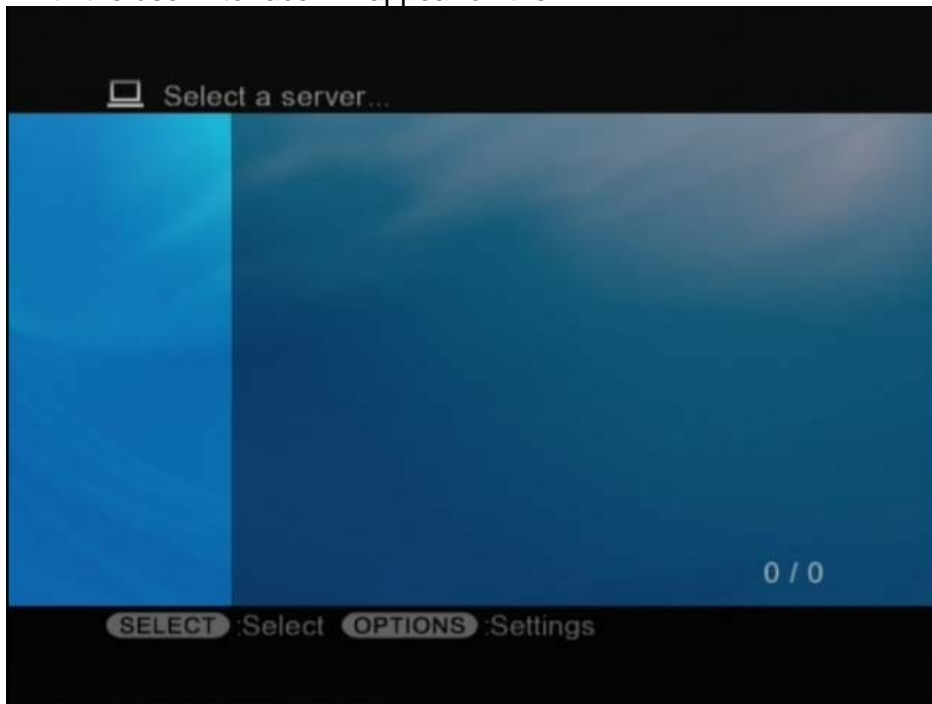
Using the Network Media Receiver - 10

Finding the Server - A

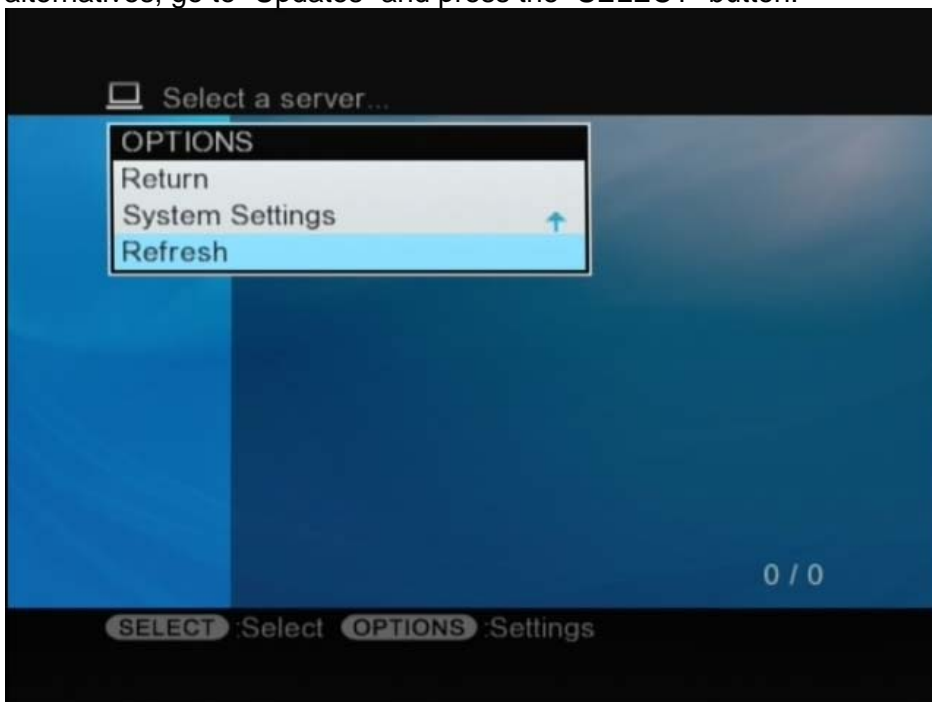
1. With the green “POWER” button on the remote control, switch on the unit, only after the “STATUS” led has definitively gone off.

The “Wireless” led on the unit will switch on, as evidence of the successful creation of the wireless network (if you have chosen to create a wireless LAN).

The screen with the user interface will appear on the TV.



2. Press the “OPTIONS” button on the remote control (RM-NM100E). A short list will appear with three alternatives, go to “Updates” and press the “SELECT” button.



The system updates itself, and at this point it will find the server adding it to the list of available servers.

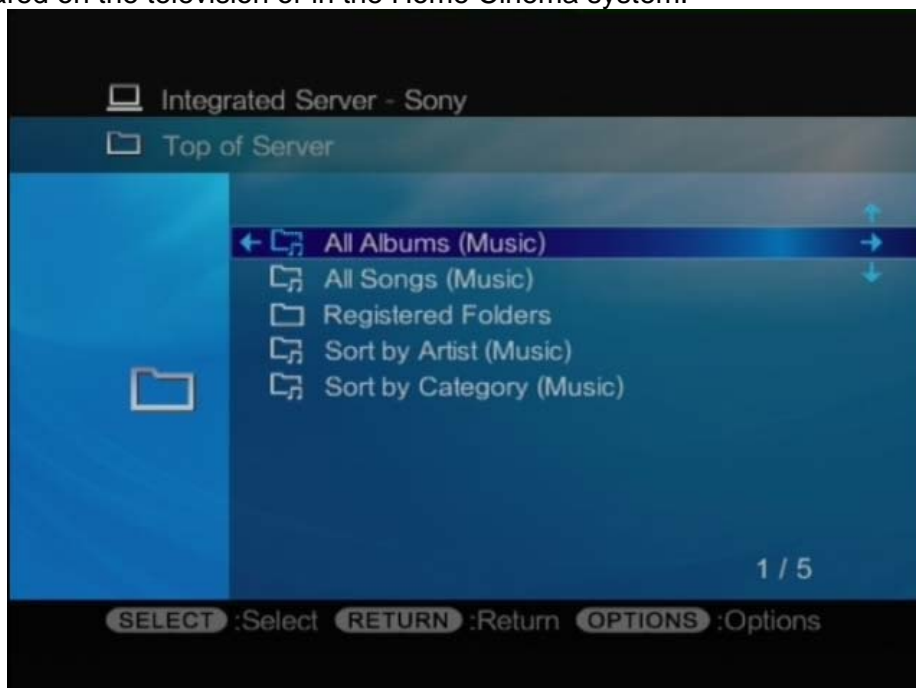


N.B. The name that appears in this list is the same name assigned to the PC following this procedure:

- > Right click on the icon "My Computer"
- > Select the option "Properties"
- > Select "Computer name"
- > Go to "Change"
- > Change the name of the PC and confirm with "OK"
- > Restart the PC to bring into effect the new settings.

3. Press the "SELECT" button on the remote control (RM-NM100E). The main window of the Integrated Server "Sony" (your VGC-RA304) will appear.

In this page are displayed all the folders whose contents, through Network Media Receiver, can be shared on the television or in the Home Cinema system.



The system allows the storage of multimedia contents within:

- > “Registered folders”, that is those folders which have been installed by means of “Vaio Media Console” (see 6B “setting of the folders for multimedia content”).
- > “Organise by artist (music)”, that is a folder where audio contents are organised by artist; In fact, if the user chooses to use programmes such as “SonicStage”, they can import (from the Internet, from CD, etc.) and organise the tracks by artist on the PC’s hard disk, and “Vaio Zone” can show the same organization.
- > “Organise by category (music)”, that is a folder where the audio contents are organised by category; in fact, if the user chooses to use programmes such as ‘SonicStage”, they can import (from the Internet, from CD, etc.) and organise the tracks by category on the PC’s hard disk, and “Vaio Zone” can show the same organisation.
- > “Recordings with timer”, that is a folder in which the contents are television recordings made using the “TIMER” function of “Vaio Zone”.
- > “Recorded Video”, that is a folder in which the contents are television recordings on hard disc in “Mpeg2” format, the so-called “video capsules”, made using “Vaio Zone”.

Registered folders - B

From the main screen of the integrated Sony server it is possible to choose, among the others, the option “Registered folders”.

Within the screen “Registered folders”, a new list of options will be displayed which correspond to the folders automatically shared by the “Vaio Media Console” and “Vaio Zone” programmes:

- > “Contents”
- > “Documents”
- > “Samples”
- > “VAIO Sample”

Besides these four main options, there are those folders installed by the user via “Vaio Media Console” (see 6B “Setting of folders for multimedia content”):

- > “Personal photo album”
- > “Clips”
- > “My favourite songs”

Using the directional arrows and the “SELECT” button of the remote control, to confirm the choice, it is possible to display their content on the television and therefore access them from the TV, instead of listening to them through the Hi-Fi or Home Cinema system.

One example of the displayed folders can be found in the following picture.

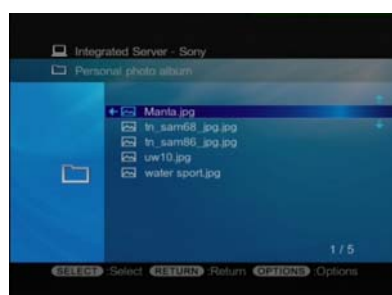
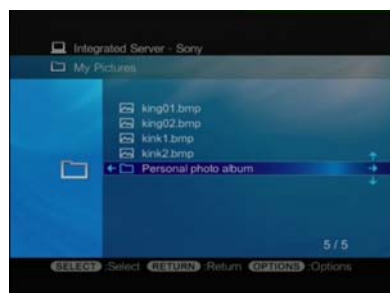


C – Examples of use of the Network Media Receiver browser

After having correctly configured the system for the wireless unit, the use of the browser is extremely simple and quick. Below are shown a few examples of usage.

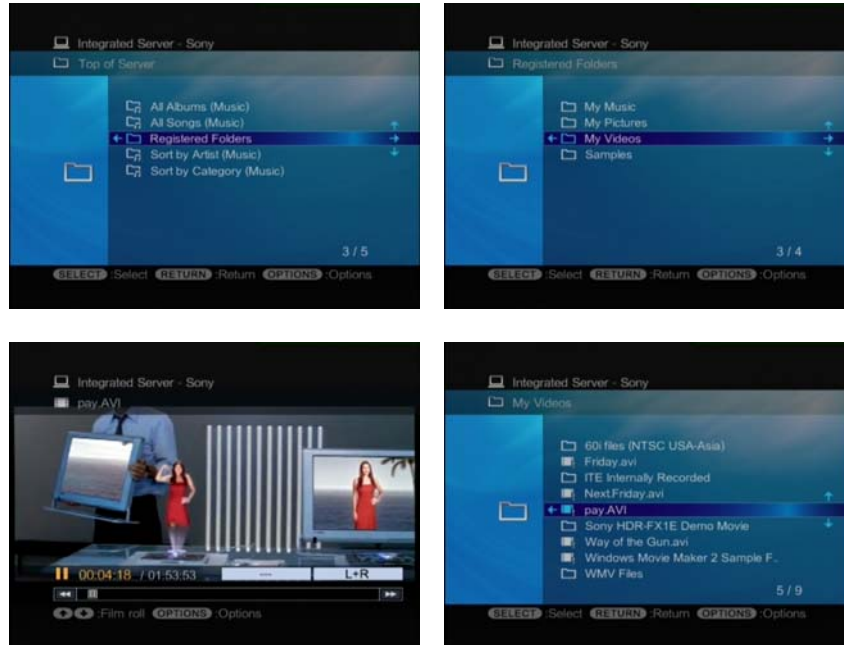
1. DISPLAY A PICTURE (Jpeg, Gif, Png, Tiff, Bmp)

From the initial screen "Integrated Server-Sony", select "Registered folders" and press "SELECT", select "Personal photo album" and press "SELECT", then on the new screen choose one of the files and confirm your choice with "SELECT". The picture will appear full-screen.



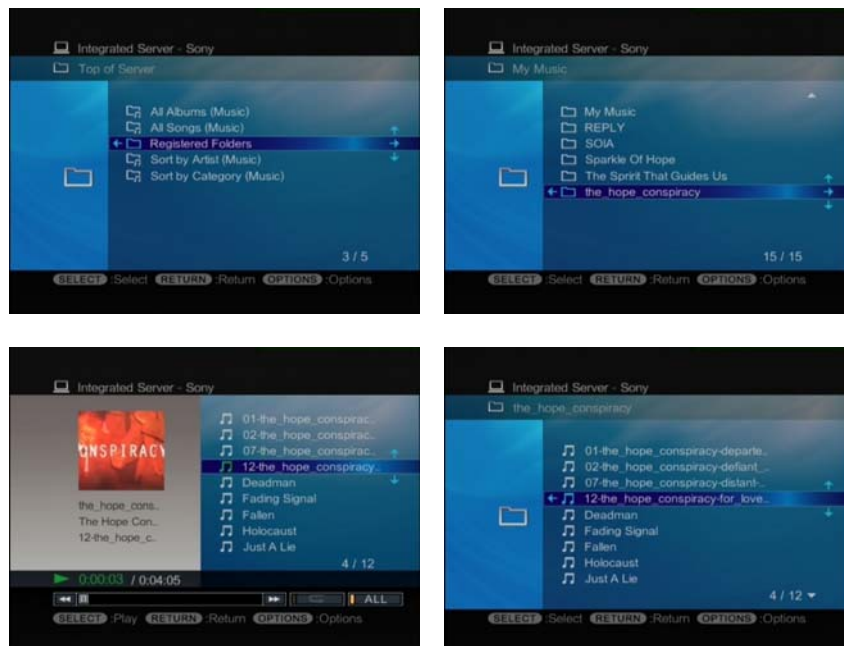
2. PLAY A CLIP (Mpeg1e 2, Divx, Wmv, DV-AVI-HDV)

From the initial screen "Integrated Server-Sony", select "Registered folders" and press "SELECT", select "Clips" and press "SELECT", then on the new screen choose one of the files and confirm your choice with "SELECT". The image will appear full-screen.



3. LISTEN TO A SONG (Atrac3, Atrac3Plus, Wave, Mp3, Wma)

From the initial screen "Integrated Server-Sony", select "Registered folders" and press "SELECT", select "Clips" and press "SELECT", then on the new screen choose one of the files and confirm your choice with "SELECT". A final screen will appear in which, if you have used "SonicStage" to import the files to the PC, it is possible to combine a picture to use as an album cover.



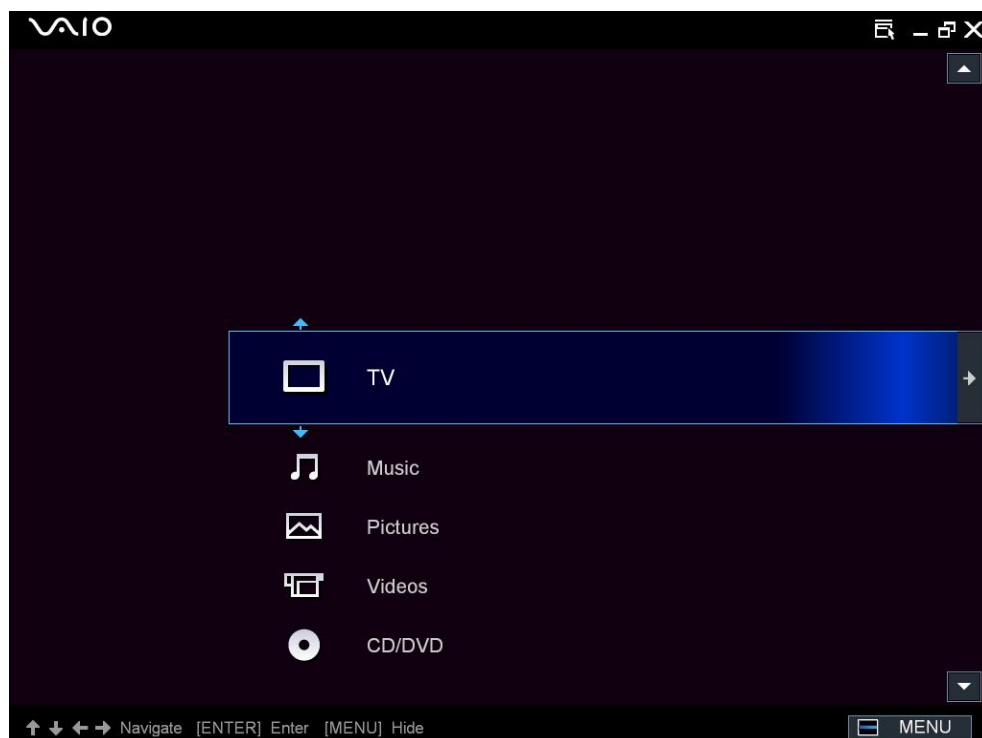
11 – Use of Vaio Zone

A – Playing TV

1. From START, ALL PROGRAMMES, VAIO ZONE, select “Vaio Zone”.
The “Vaio Zone” software will be launched.

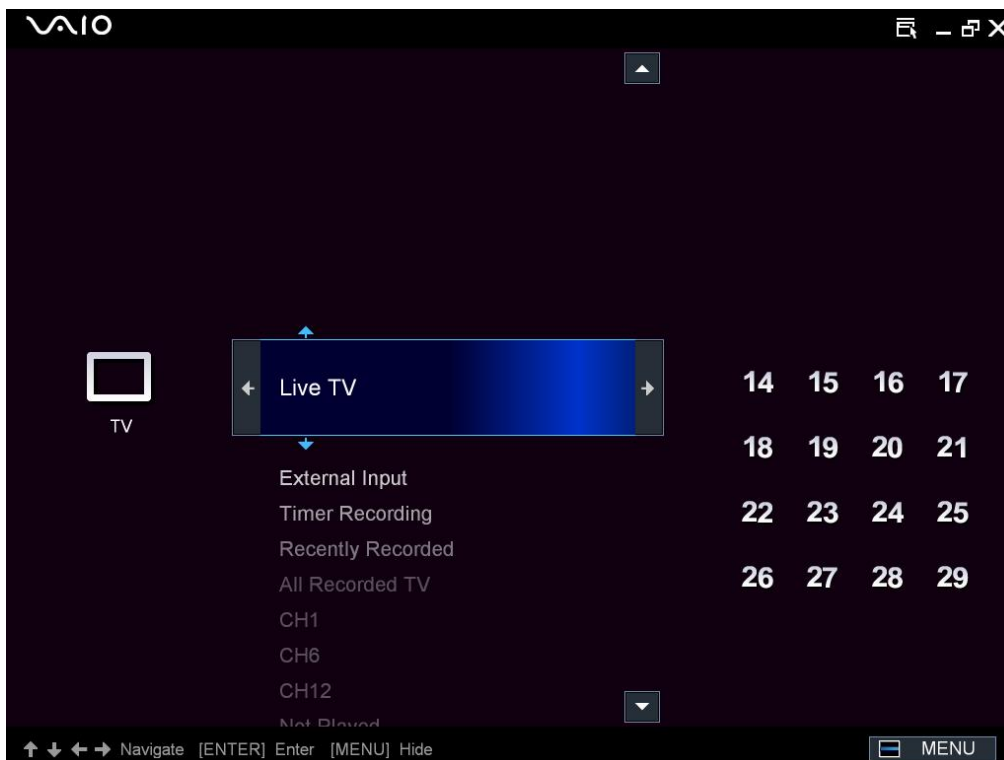


2. Once launched, a screen like the following will appear. Select “TV”.



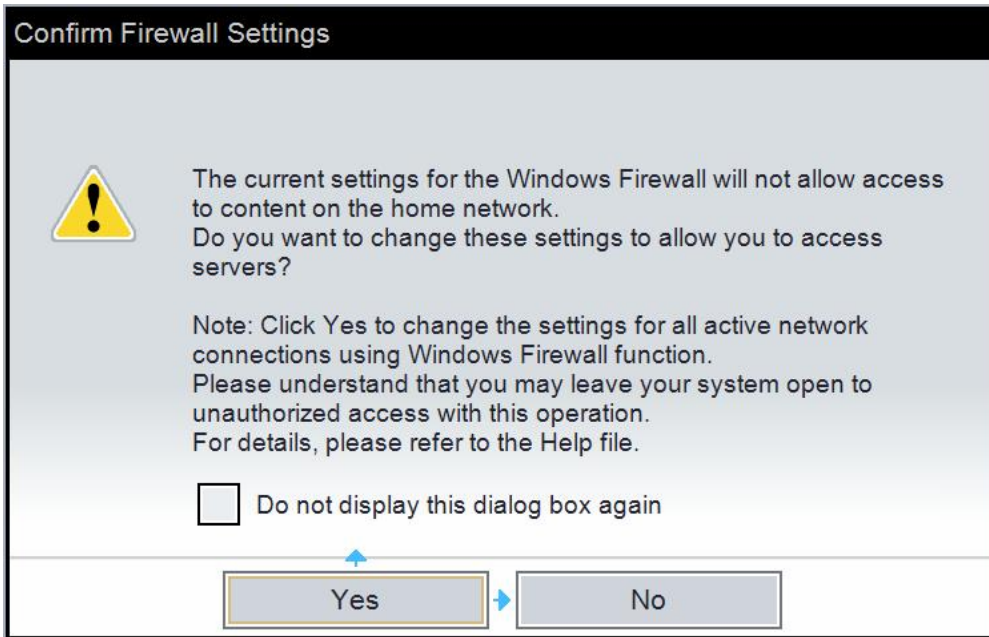
3. A third screen will appear with various options:

- > “Live TV”, that is the possibility of viewing television programmes live by means of the RF input.
- > “External input”, that is the possibility of viewing data originating from external units (Video cameras, VHS or DVD readers, etc.).
- > “Recording with timer”, that is the possibility of recording “video capsules”, clips in Mpeg2 format.
- > “Recent recordings”, that is the possibility of immediately accessing “video capsules”, recently recorded.
- > “All recorded TV programmes”, that is the possibility of immediately accessing all video recordings previously made.
- > “Not played”, that is the possibility of immediately accessing all recordings never played before.
- > “Possible deletion”, that is the possibility to delete video capsules.
- “Video server”, that is the possibility of immediately accessing all folders previously installed in the sharing list of “Vaio Media Console”.



The first time that the programme is performed, you will be asked to give confirmation to modify the settings of the Firewall so that the programme is able to work within the network without being blocked.

4. Click on “YES” and, once the message appears that the settings of the Firewall have been modified, confirm with “OK”.



Once the Firewall settings are modified, “Vaio Zone” will tune in to the required television channel. One of the most interesting functions offered by the programme is that of recording what is being broadcast on TV.



Here follows a short explanation of the function:

5. Moving the mouse, or by means of the relevant button on the remote control provided with the PC, at the bottom of the screen a control bar will appear with a red dot, which, when pressed, starts the recording of the television channel.

6. In this phase, “Vaio Zone” allows you to play back what has been recorded, without interrupting the recording, by means of a control on the bar which operates only on the display and not on the recorder. On the left of the recording button, there is a small grey square with a blue arrow on the side. By pressing it, the recording will continue but what has been previously recorded will be shown.



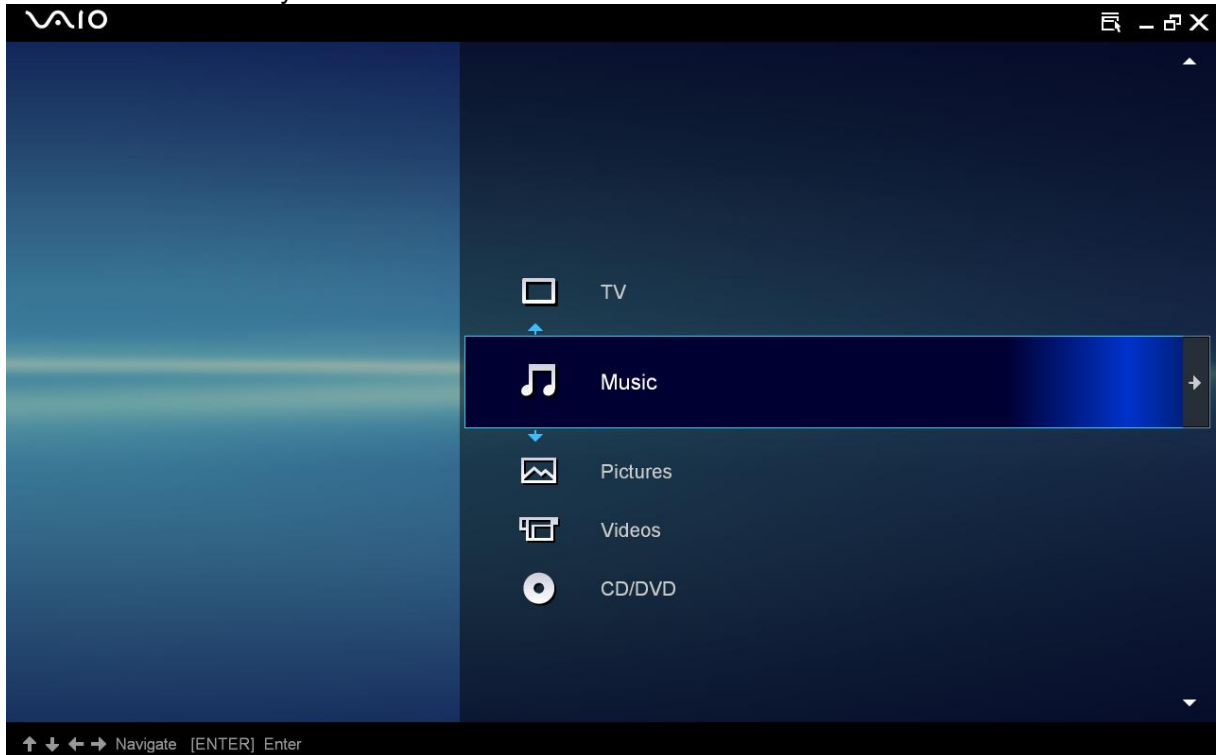
7. To terminate the recording, it is necessary to stop it with the button located to the right of the red dot, similar to the one described in point 6, but in this case red.

8. The recording is saved as a “video capsule” and it is possible to display the list of all the recordings made, and also those made previously, by going back to the TV screen and selecting the option “All recorded TV programmes”.

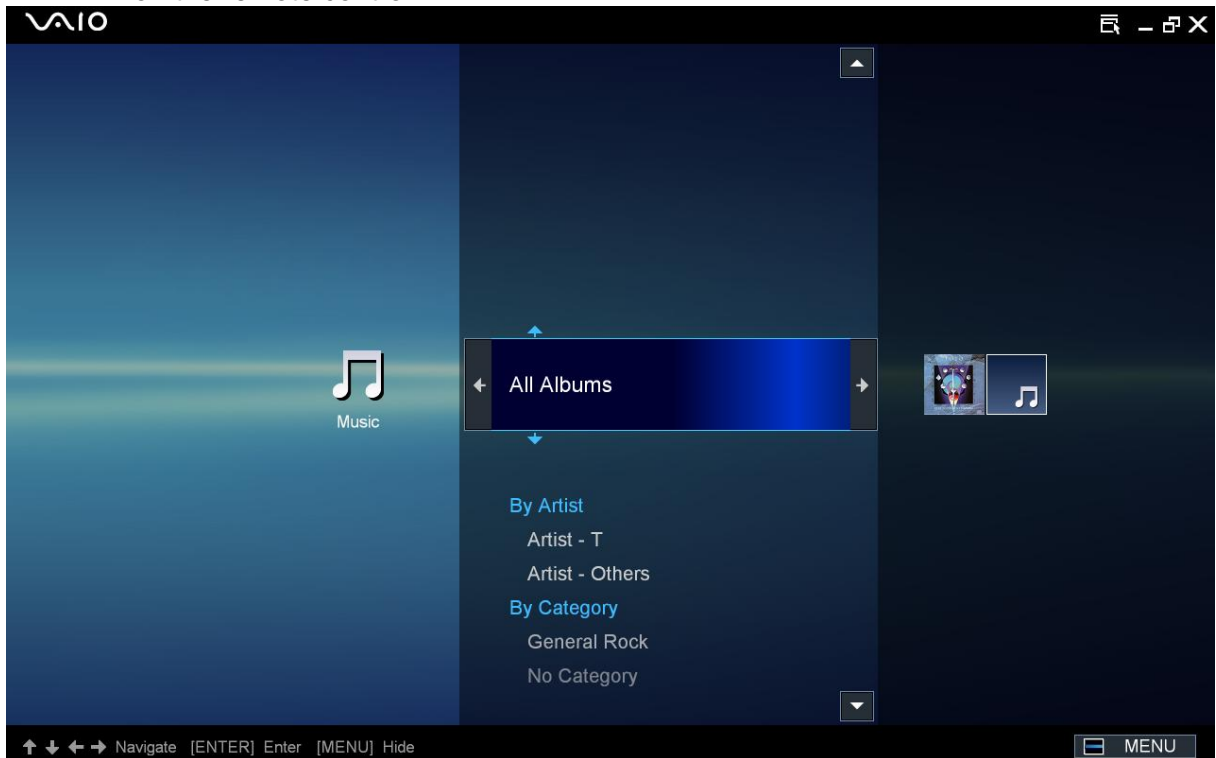


Playing music tracks - B

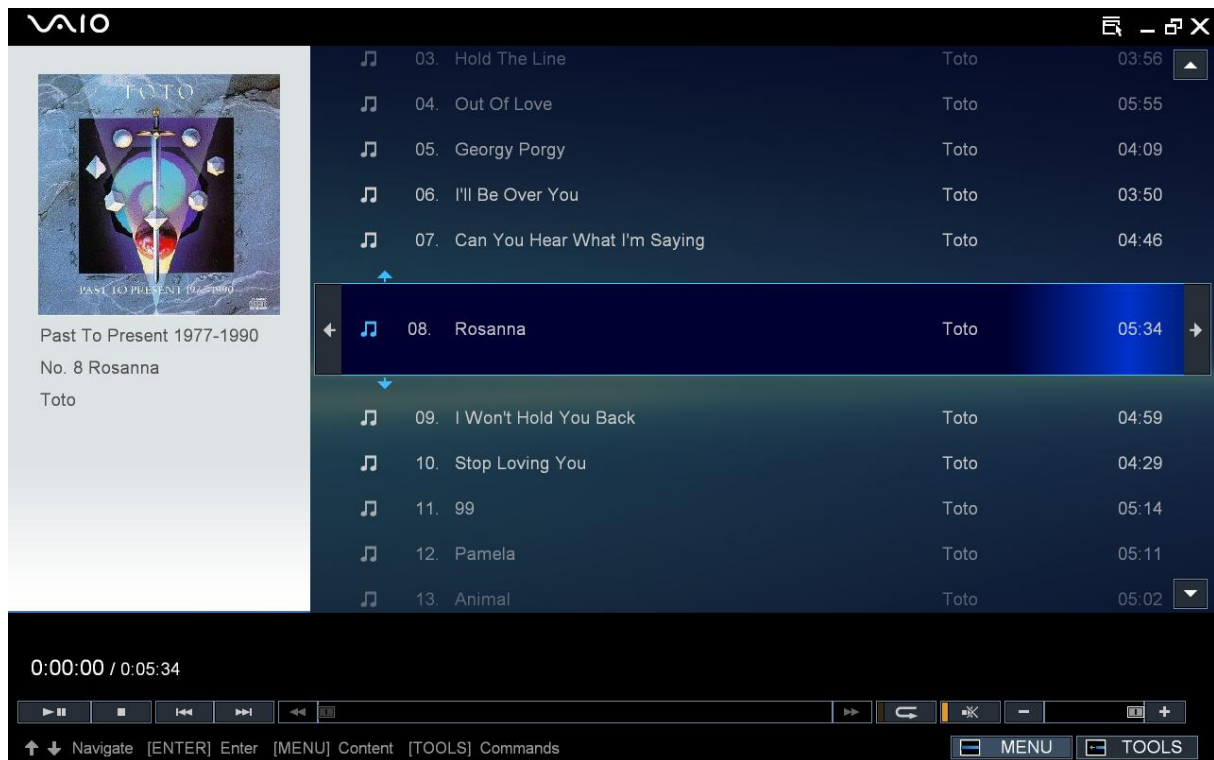
1. Going back to the main programme screen, select the option “Music”. Confirm with “ENTER” from the keyboard or the remote control.



2. A new screen will appear offering the possibility to organise files according to a number of modalities. Choose the one you prefer and confirm with “ENTER” on the keyboard or “ENTER” on the remote control.

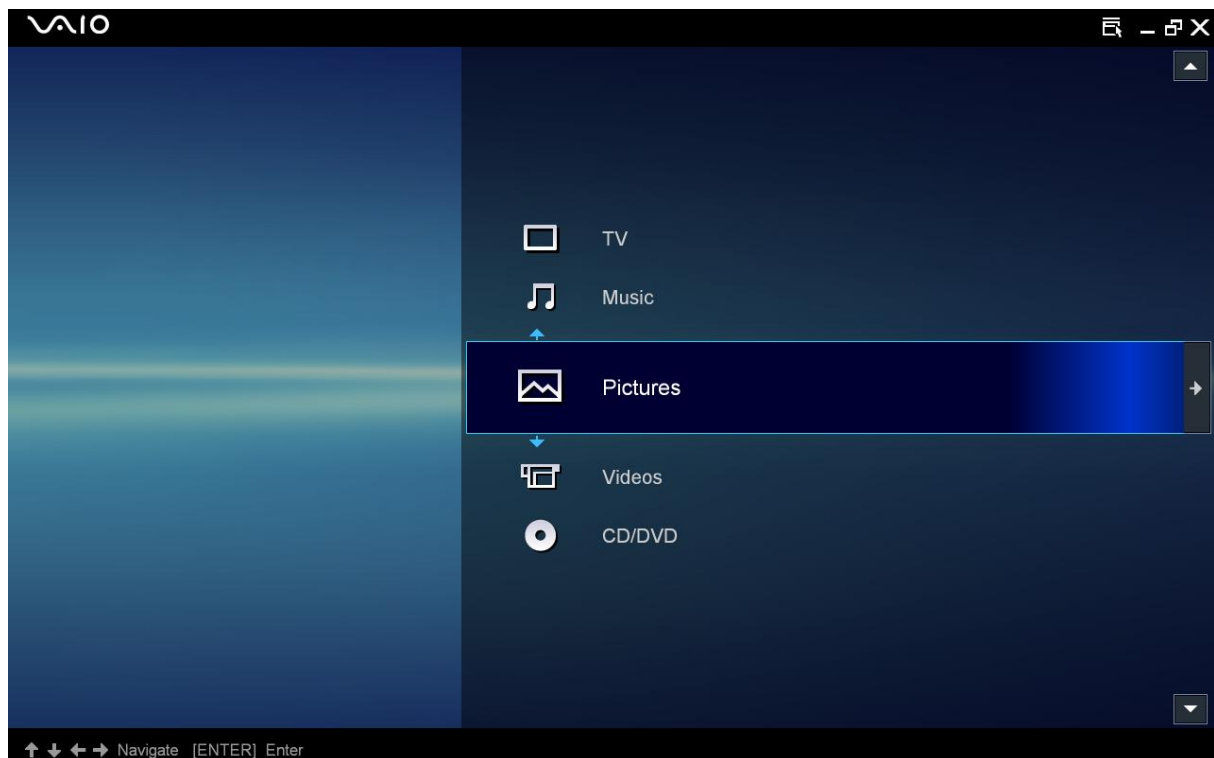


3. On the right-hand side of the screen will appear a list of the albums available. Select one and click. A screen will appear with the tracks contained in the chosen album

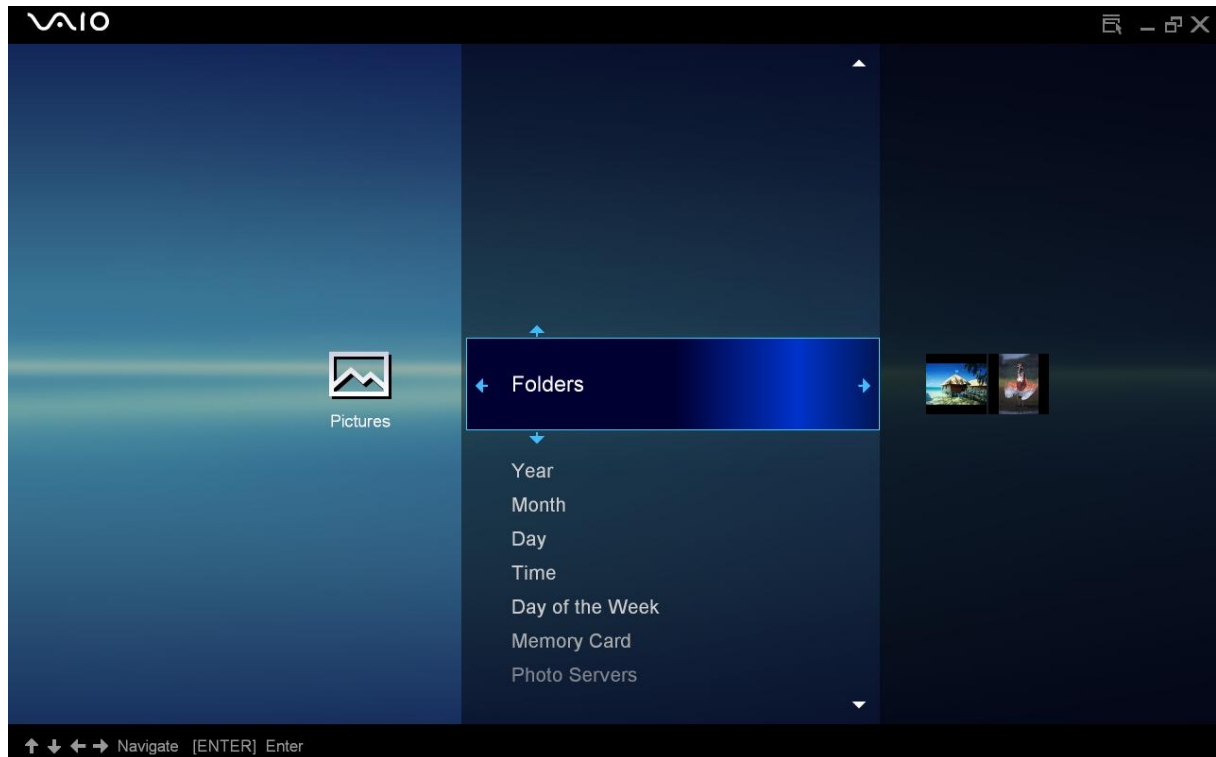


C – Playing Photos

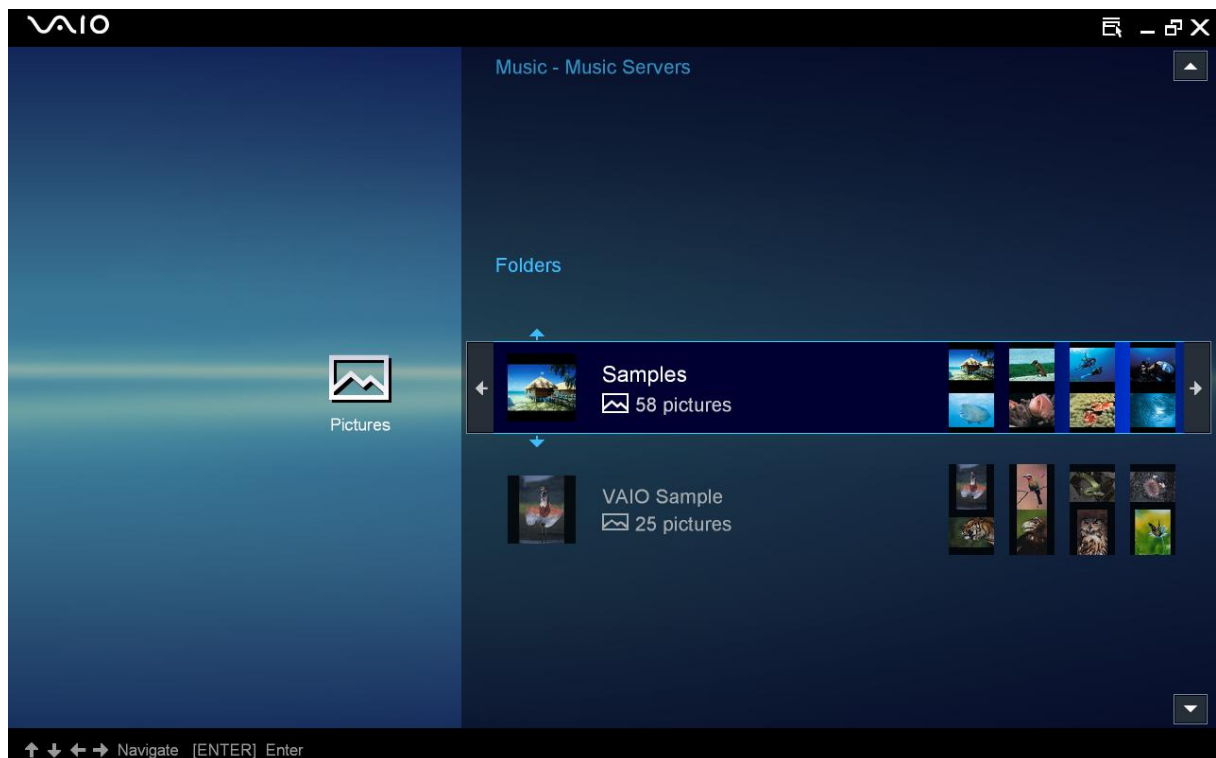
1. Going back to the main screen of the programme, choose the option “Photo”.



2. A new screen will appear offering the possibility of organising files according to a number of modalities. Choose the one you prefer and confirm with “ENTER” on the keyboard or the remote control.

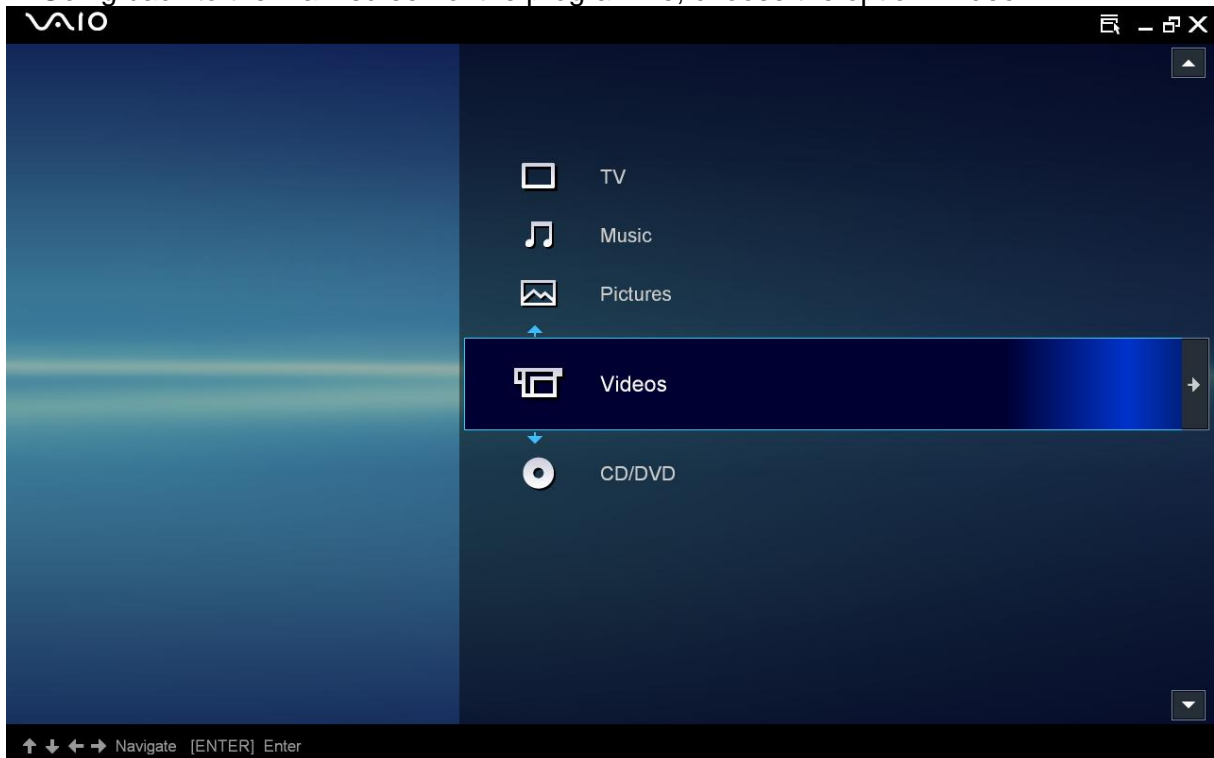


3. A list of the albums available will appear. Select one and click. The first picture in the album will appear on full screen, starting a slide show which will show all of them.

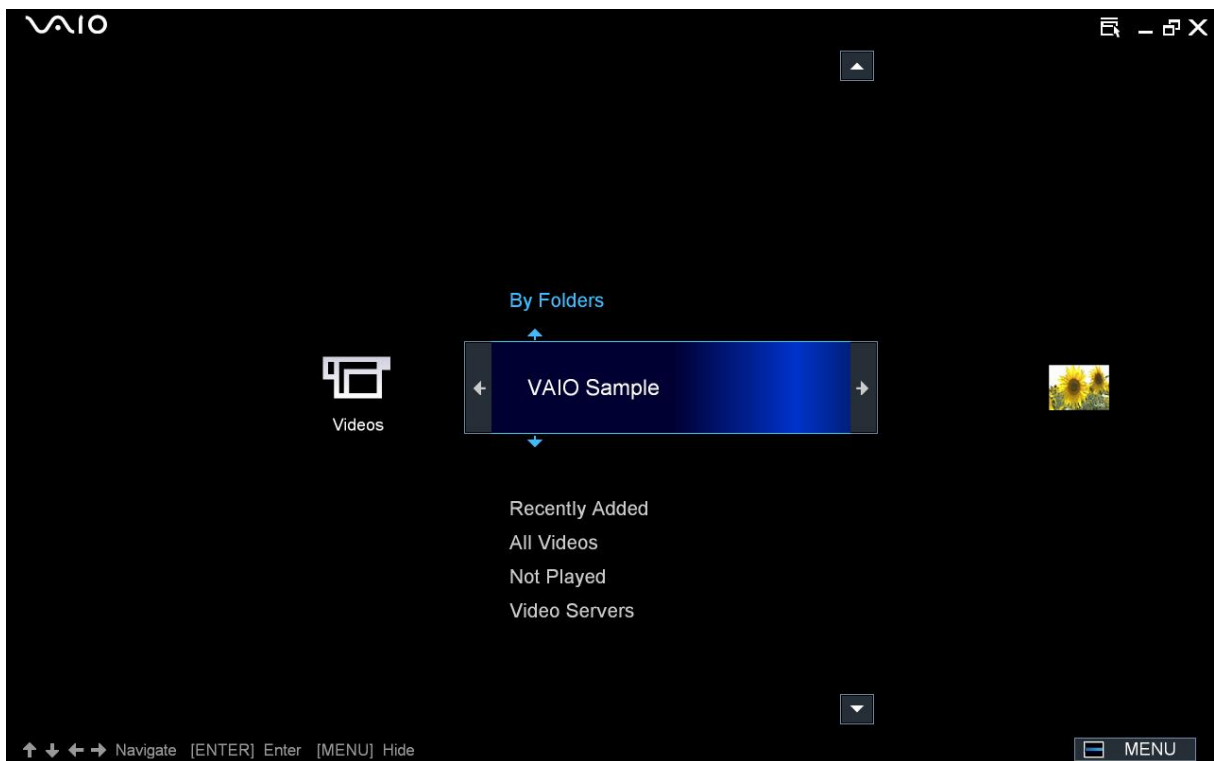


D – Playing Videos

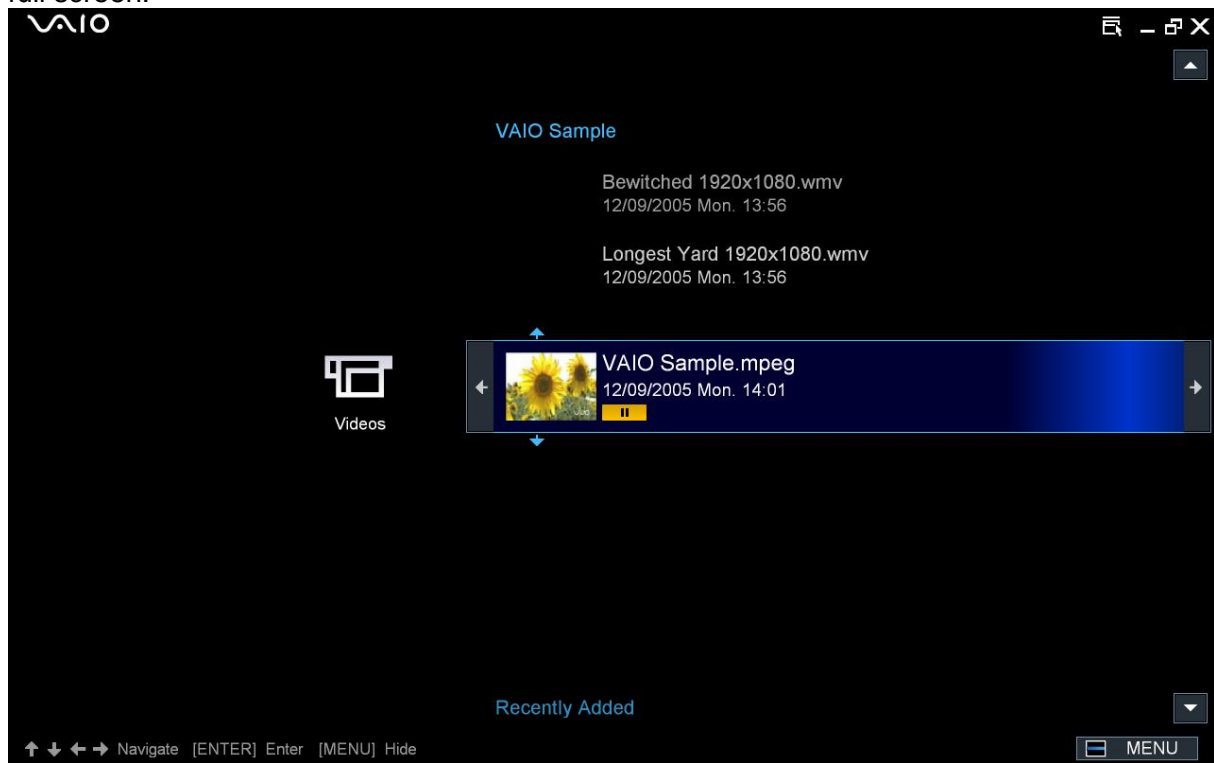
1. Going back to the main screen of the programme, choose the option “Video”.



2. A new screen will appear offering the possibility of organising files according to a number of modalities. Choose the one you prefer and confirm with “ENTER” on the keyboard or the remote control.

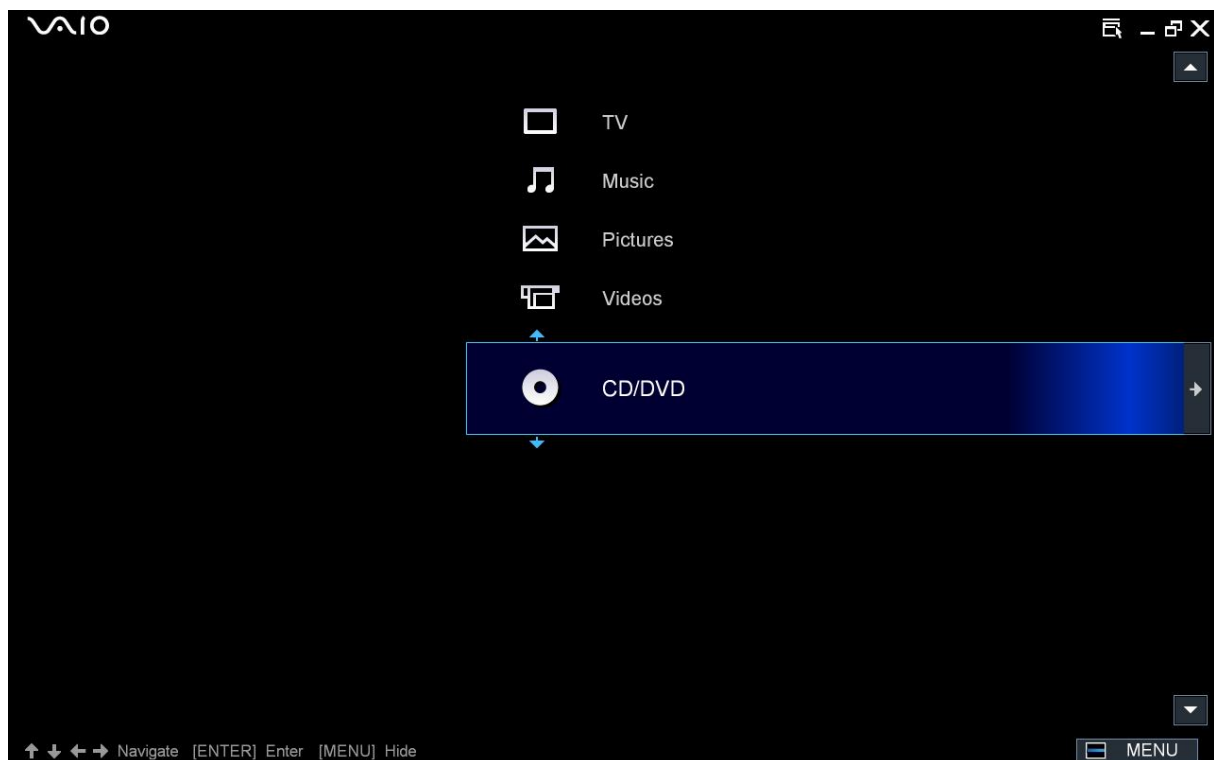


3. A list of the videos available will appear. Select one and click. The clip will be played on full screen.



Playing CDs/DVDs - E

1. Going back to the main screen of the programme, choose the option "CD/DVD".



2. A new screen will appear offering the possibility to choose the mode (CD or DVD). Choose for example CD and confirm with “ENTER” on the keyboard or the remote control.



3. On the following screen, pressing “ENTER” on the keyboard or the remote control, it will be possible to listen to the selected CD.

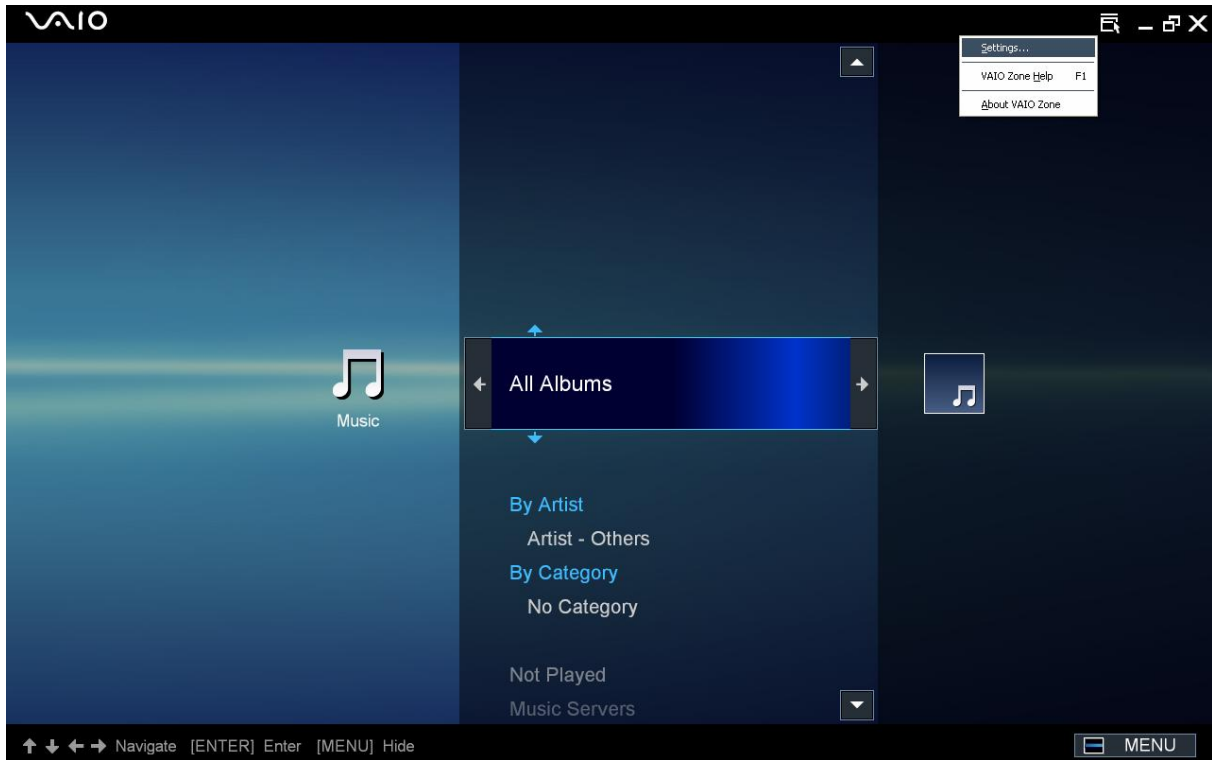


N.B. All the contents which the programme manages to display within different categories (Music, Video, etc.) are those contained in the folders shared during the set-up of “Vaio Media Console” (section 6B “Settings of folders for multimedia content”).

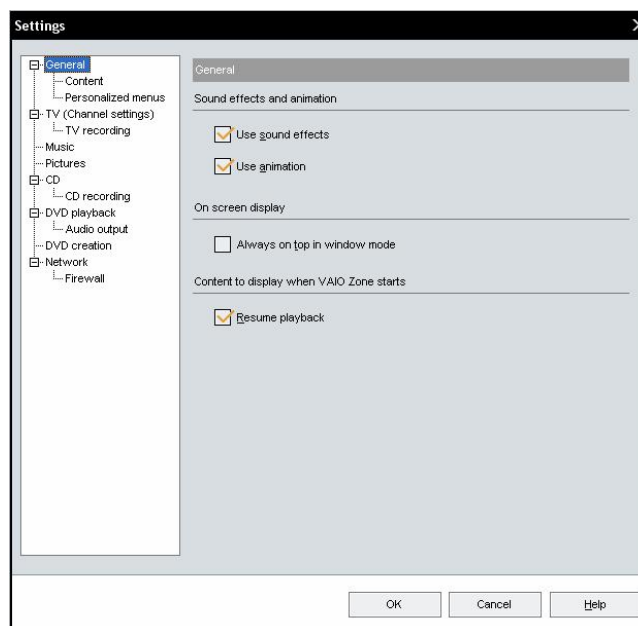
Modification of Vaio Zone settings - F

Previously (Section 7C “Organisation of TV channels”) we have seen how to change the settings of “Vaio Zone”; it is however possible to change all the settings of the programme, even when the programme is functioning.

1. With the mouse pointer, go to the icons located on the top right-hand-side corner of any screen of the programme and go on the first icon on the left. Click with the right button.



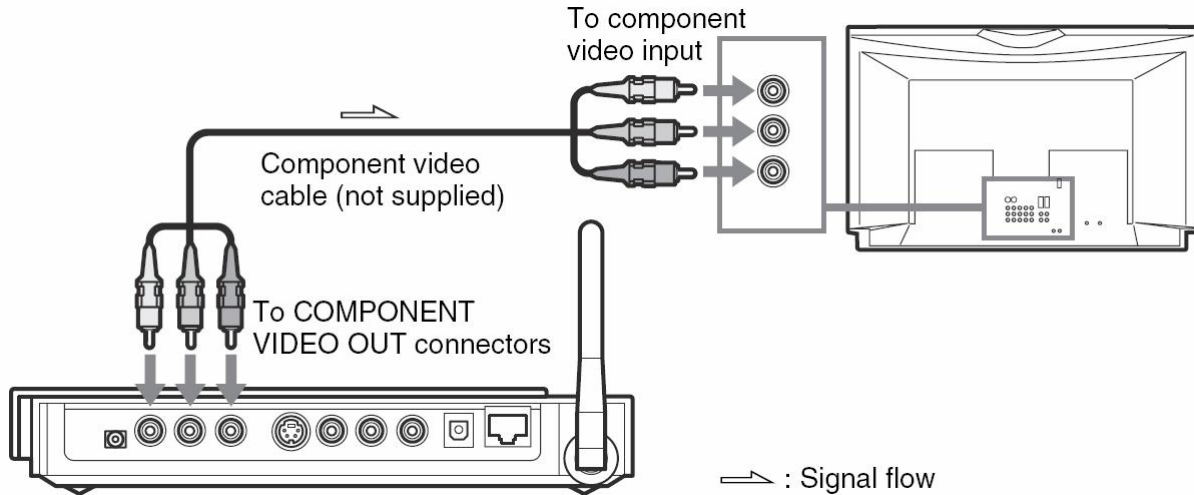
2. Select settings and click. The window seen earlier on will open. From this window, it is possible to modify all the settings of the different functions of “Vaio Zone”.



12 –Component Connection for HD TV

In order to be able to correctly display television contents or recordings made in high definition, it is recommended that you connect the Network Media Receiver (VGP-MR100E) by means of a “COMPONENT” cable so as to make the actual quality visible.

1. Connect the “COMPONENT” cable to the sockets on the TV and on the Network Media Receiver, respecting the colour correspondence.



2. Connect the power plug to the electrical current outlet (220V).

For the creation of an environment and the sharing of contents, please refer to the previous sections (from section 5C “Configuration of the network settings” up to section 9D “Modification of network settings” up to page 35 point 11, observe that the first image on page 32 shows the option “Wired LAN” instead of “Wireless LAN”. Sections subsequent to section 9 remain unchanged).

Types of files managed by Network Media Receiver - 13

Below is an explanatory and illustrative table of all the types of files managed by the PC-Network Media Receiver system:

Category	Type of Content	Files supported
VIDEO	Video capsules recorded on your VAIO through Giga Pocket software, or other video files stored in the PC.	*Video capsules *MPEG 1 *MPEG 2 **According to the type of PC, the following files could also be supported: *WMV
MUSIC	Musical files and Play list on your VAIO.	*LPCM (WAV) *MP3 *According to the type of PC, the following files could also be supported: *WMA *ATRAC3 *ATRAC3plus
PHOTO	Photos or static images on your VAIO, also in specific folders.	*JPEG *PNG *According to the type of PC, the following files could also be supported: *Bitmap *GIFF *TIFF