



Network Media Receiver VGP-MR100E
&
BT Voyager 2100 Wireless ADSL

Table of contents

Preliminary operations

Connecting the Network Media Receiver to the television set or the video recorder

Setting up the BT Router

Norton Firewall Guide

Configuration of Vaio Media

Configuration of the Network Media Receiver

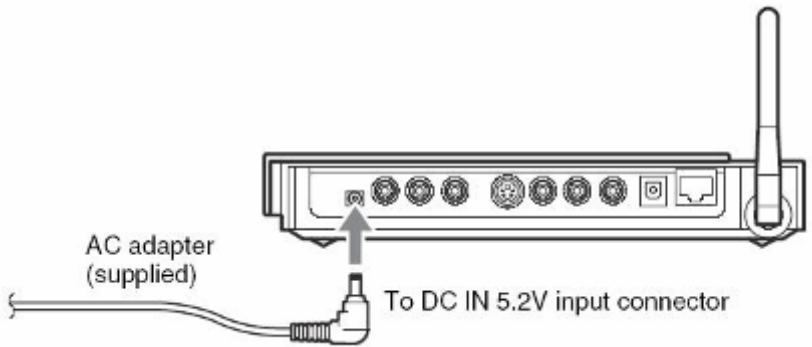
Using the Network Media Receiver

Component Connection for HD TV

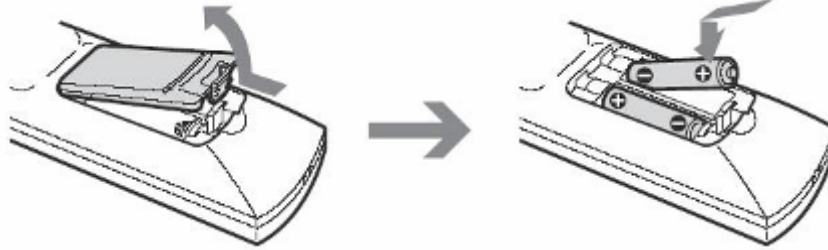
Types of files managed by Network Media Receiver

Preliminary operations

- 1 Open the Network Media Receiver package.
- 2 Plug the Network Media Receiver into the electric supply outlet (220 V).
Connect the AC adaptor (PCGA-AC5V1) to the DC port of the Network Media Receiver appliance (VGP-MR100E).
Connect the electric cable to the AC adaptor and afterwards to the socket on the wall.



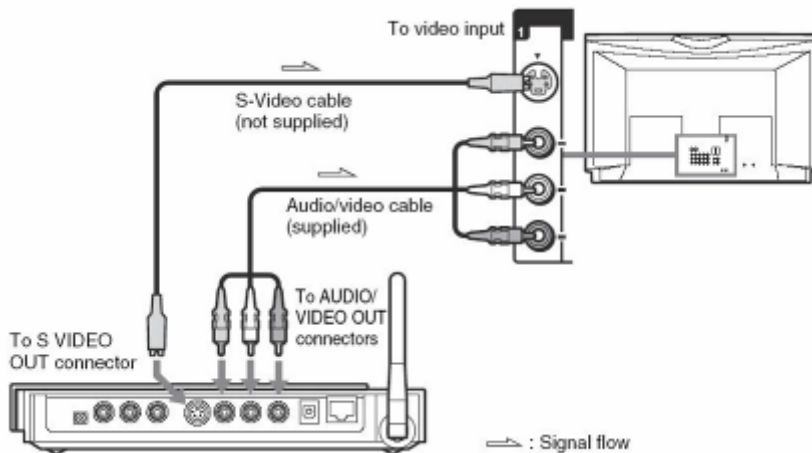
- 3 Make the remote control operational.
Insert 2 AA batteries in the appropriate lodgement.



Connecting the Network Media Receiver to the television set or the video recorder

Connect the AV cable to the sockets on the TV or on the VCR, respecting the corresponding colours.

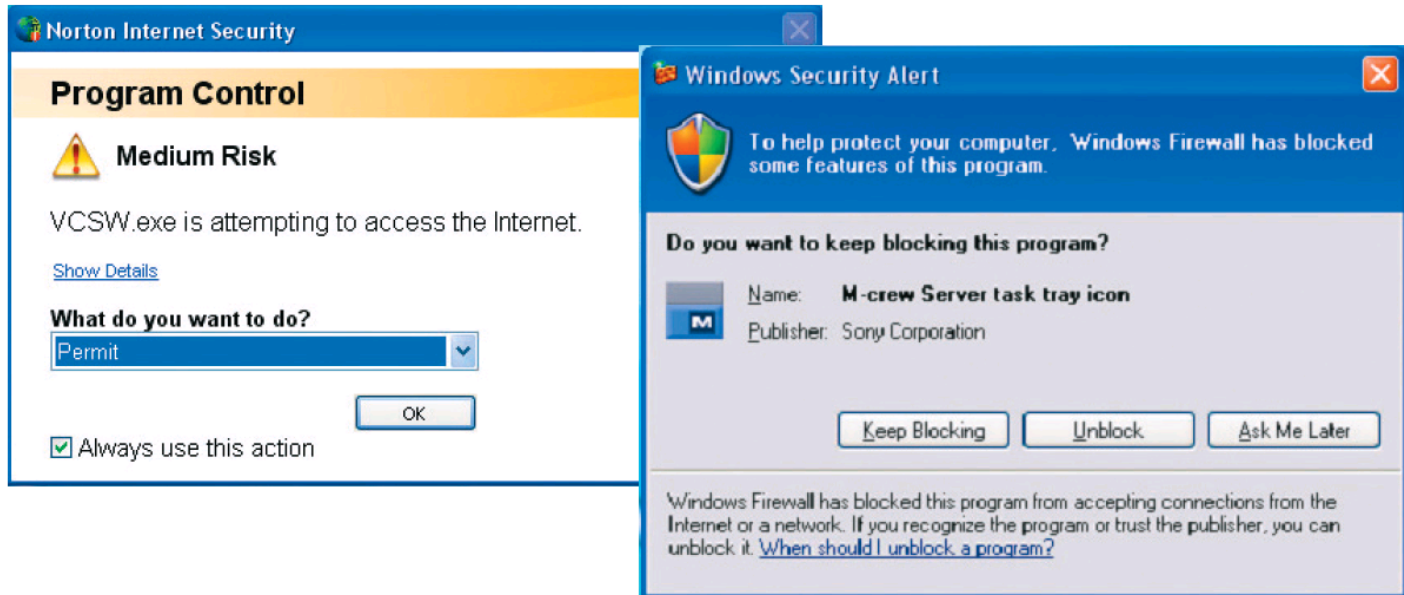
- S-Video cable (not included)
- Video input
- Component Audio/Video cables (included)



Setting up the BT Router

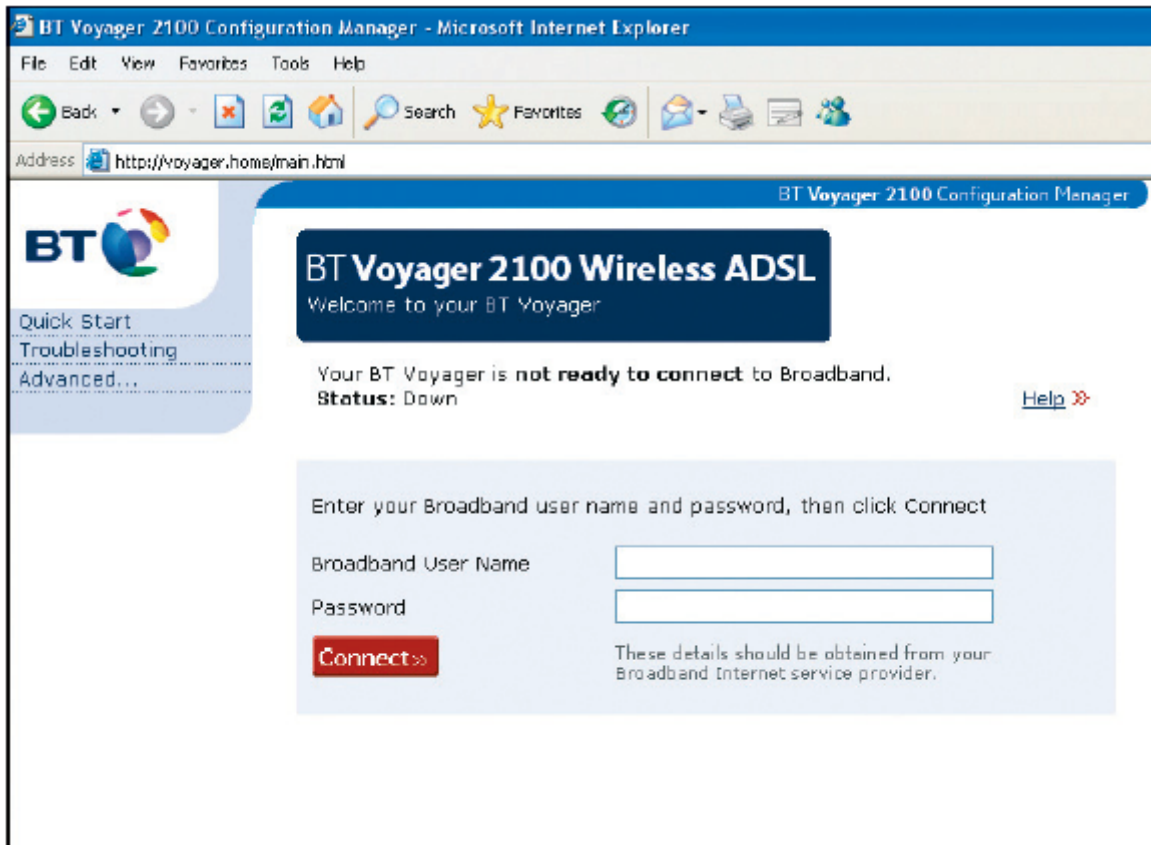
In order to ensure the smooth operation of your Network with Norton Internet Security installed, please follow the steps described in this guide.

- ❑ The steps outlined within this guide will allow any device connected directly to your router to bypass the firewall (security software) on your computer.
- ❑ We would also suggest that you disconnect from the internet before beginning the process described below.
- ❑ If your firewall produces warning messages similar to those displayed below, we would advise that you **always allow** or **permit** connections when requested by your router.



- 1 Insert one end of the supplied Ethernet cable into INPUT 1 on the back of the BT Router. The other end is connected into the back of the PC.
- 2 Insert the power cable and turn on at the mains.
- 3 Double-click on the **Internet Explorer** icon on your desktop.
- 4 In the address bar at the top of the screen enter **http://voyager.home** and hit enter.

- 5 If you were connected to Broadband, the set-up screen would allow you to configure your internet connection. But since we do not have access to the internet, click **Advanced** on the left.



BT Voyager 2100 Configuration Manager - Microsoft Internet Explorer

File Edit View Favorites Tools Help

Back Forward Stop Refresh Home Search Favorites Home Mail Print Mail

Address <http://voyager.homs/main.html>

BT Voyager 2100 Configuration Manager

BT

Quick Start
Troubleshooting
Advanced...

BT Voyager 2100 Wireless ADSL
Welcome to your BT Voyager

Your BT Voyager is **not ready to connect** to Broadband.
Status: Down [Help](#)

Enter your Broadband user name and password, then click Connect

Broadband User Name

Password

Connect

These details should be obtained from your Broadband Internet service provider.

- 6 From the options on the left, click **Wireless**.

BT Voyager 2100 Configuration Manager - Microsoft Internet Explorer

File Edit View Favorites Tools Help

Back Forward Stop Refresh Home Search Favorites Recycle Bin Mail Print Mailbox People

Address <http://voyager.home/main.html>

BT Voyager 2100 Configuration Manager

BT

Quick Start
Troubleshooting
Configuration
Quick Setup
Wireless
Local Network
Internet
Security
Virtual Server
IP Routing
DNS Server
IGMP Proxy
System
Status

BT Voyager 2100 Wireless ADSL

Welcome to your BT Voyager

Your BT Voyager is **not ready to connect** to Broadband.
Status: Down [Help](#)

Enter your Broadband user name and password, then click Connect

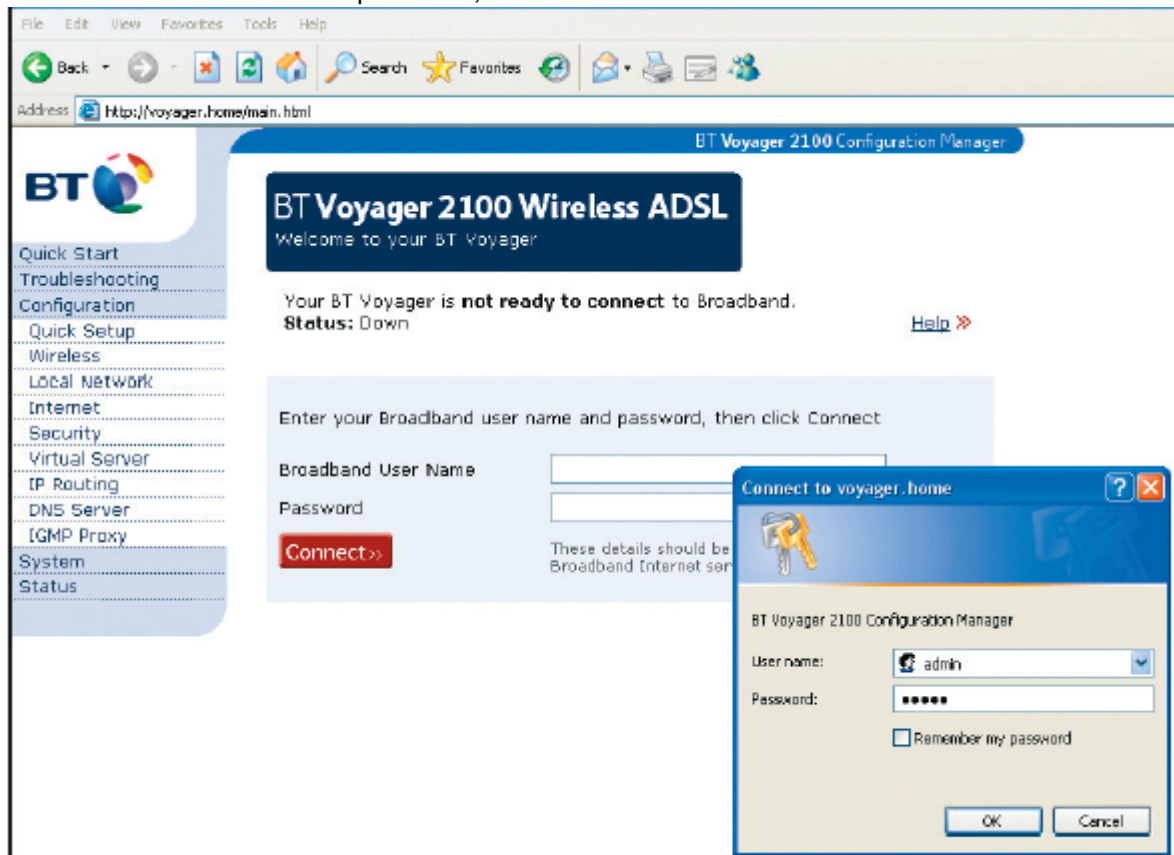
Broadband User Name

Password

Connect

These details should be obtained from your Broadband Internet service provider.

- 7 When asked to fill in a username and a password, enter **admin** for both and click **OK**.



- 8 Click **Wireless** again to proceed.

- 9 At the **Wireless configuration** window make sure the **Enable Wireless Network** box is selected, enter a **Wireless Network Name (SSID)** (all one word) and then enter a channel number - it can be any number between 1 and 13.

The screenshot shows the BT Voyager 2100 Configuration Manager interface. The browser address bar shows 'http://voyager.home/main.html'. The page title is 'BT Voyager 2100 Configuration Manager'. The main heading is 'Wireless Configuration'. Below the heading are links for 'Settings', 'Encryption', 'MAC Address Control', and 'Repeater'. The 'Wireless Basic Settings' section includes a 'Help' link and a description: 'This page allows you to configure basic features of your wireless network. You can enable or disable the wireless interface, hide the network from active scans, set the wireless network name (also known as SSID) and select the working channel.' The configuration options are: 'Enable Wireless Network' (checked), 'Hide Wireless Network (Hidden SSID)' (unchecked), 'Wireless Network Name (SSID): DIGITAL', 'Channel: 5', 'Transmission Mode: Auto', 'Transmission Rate: Auto', and 'Frame Bursting Mode: Disabled'. An 'Apply' button is at the bottom.

Address http://voyager.home/main.html Go Links Web assistant

BT

Quick Start
Troubleshooting
Configuration
Quick Setup
Wireless
Local Network
Internet
Security
Virtual Server
IP Routing
DNS Server
IGMP Proxy
System
Status

Wireless Configuration

Settings: [Encryption](#) | [MAC Address Control](#) | [Repeater](#)

Wireless Basic Settings [Help](#)

This page allows you to configure basic features of your wireless network. You can enable or disable the wireless interface, hide the network from active scans, set the wireless network name (also known as SSID) and select the working channel.

Enable Wireless Network

Hide Wireless Network (Hidden SSID)

Wireless Network Name (SSID):

Channel:

Transmission Mode:

Transmission Rate:

Frame Bursting Mode: Disabled Enabled

- 10 Set the **Transmission Mode** and **Rate** to **Auto** and disable the **Frame Bursting Mode**.
- 11 Click **Apply**.
- 12 After the screen has refreshed, click **Wireless** on the left of the screen.
The screen will refresh itself once more.

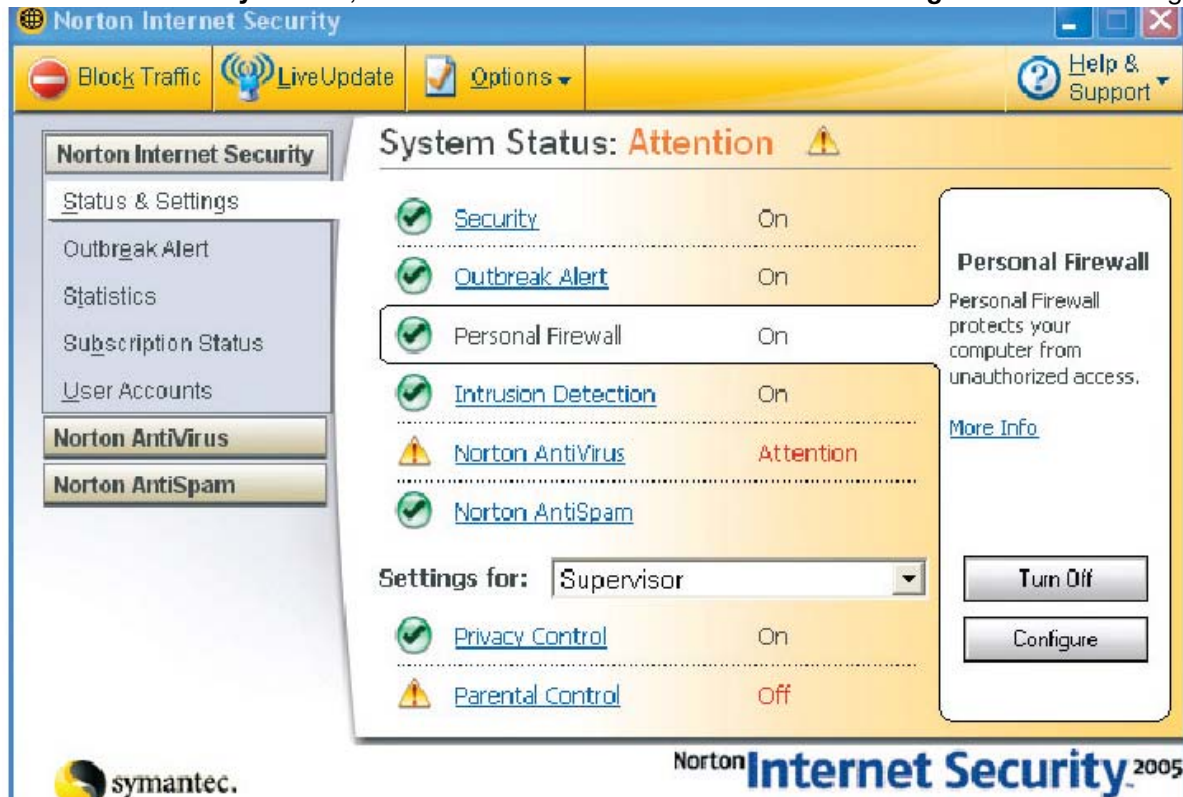
- 13 Click **Encryption** at the top of the screen -This is where we can secure our wireless network.

The screenshot displays the BT Voyager 2100 Configuration Manager interface. On the left is a navigation menu with the following items: Quick Start, Troubleshooting, Configuration, Quick Setup, Wireless, Local Network, Internet, Security, Virtual Server, IP Routing, DNS Server, IGMP Proxy, System, and Status. The main content area is titled "Wireless Configuration" and includes sub-links for Settings, Encryption, MAC Address Control, and Repeater. The "Encryption" sub-link is active. Below this, the "Wireless Encryption Settings" section is shown, featuring a "Help" link and an introductory paragraph: "This page allows you to protect your wireless network by specifying WEP or WPA wireless security. Before setting up security, ensure that your wireless adapters support the same type of security. Most support WEP, but not all support WPA or 802.1x." The configuration options include: "Wi-Fi Protected Access:" set to "64-bit WEP" (dropdown), "Authentication Type:" set to "Open System" (dropdown), and "Encryption Keys" section. The "Encryption Keys" section contains the instruction "Enter 5 ASCII characters or 10 hexadecimal digits for 64-bit encryption keys." and two radio button options: "Hexadecimal digits (0-9,A-F,and a-f are valid)" (unselected) and "ASCII characters (any printable characters are valid)" (selected). Below these are four input fields for "Key1:" through "Key4:", with "Key1" containing the text "SETUP". A "Default Transmission Key:" dropdown is set to "1". At the bottom, an "Apply" button is present, followed by a warning: "After enabling security and clicking Apply, you will lose the connection with your Voyager 2100. You should now set-up security on your wireless adapters in order to re-establish the connection."

- 14 From the **Wireless Security** drop- down box, select the option **64-bit WEP**.
- 15 Make sure **Authentication Type** is set to **Open System** and that **Hexadecimal Characters** is selected.
- 16 Enter a 10 digit password into the Key 1 box and make sure the **Default Transmission Key** is set to 1.
- 17 Click **Apply** -You can now use your router.
- 18 Minimise your window in stead of closing it, because you might need the information later on.

Norton Firewall Guide

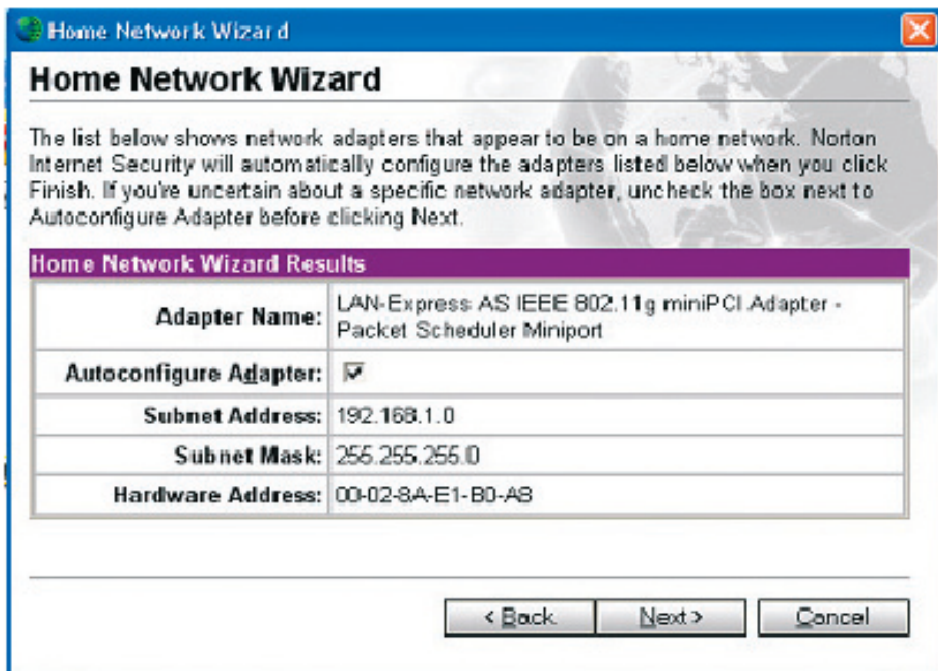
- 1 Double-click the **Norton Internet Security** icon.
- 2 In the **Norton Internet Security** window, click **Personal Firewall** and then click the **Configure** button on the right of the window.



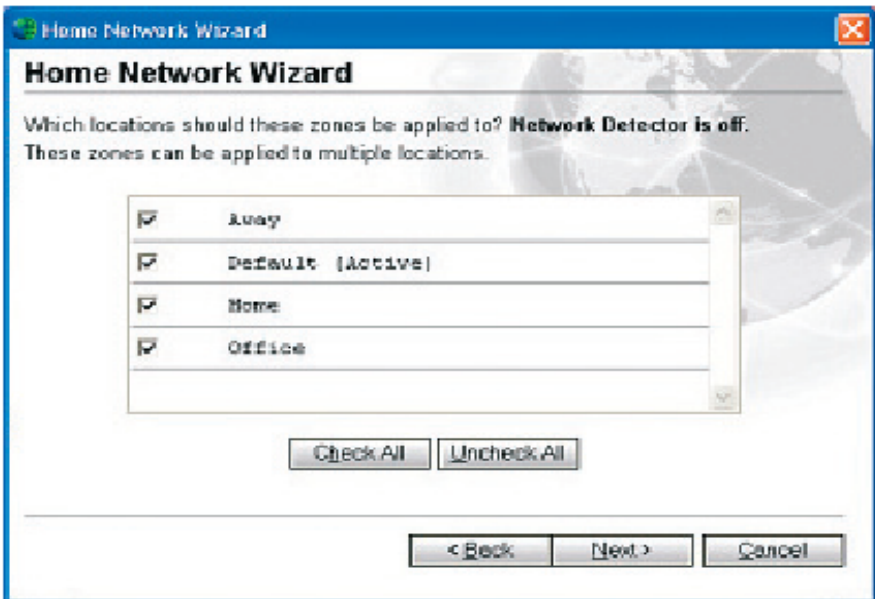
3 Under the **Networking** tab, click on the top of the screen, click the **Wizard** button and then click **Next**.



- 4 Make sure the **Autoconfigure Adapter** is selected and then click on **Next** to proceed.



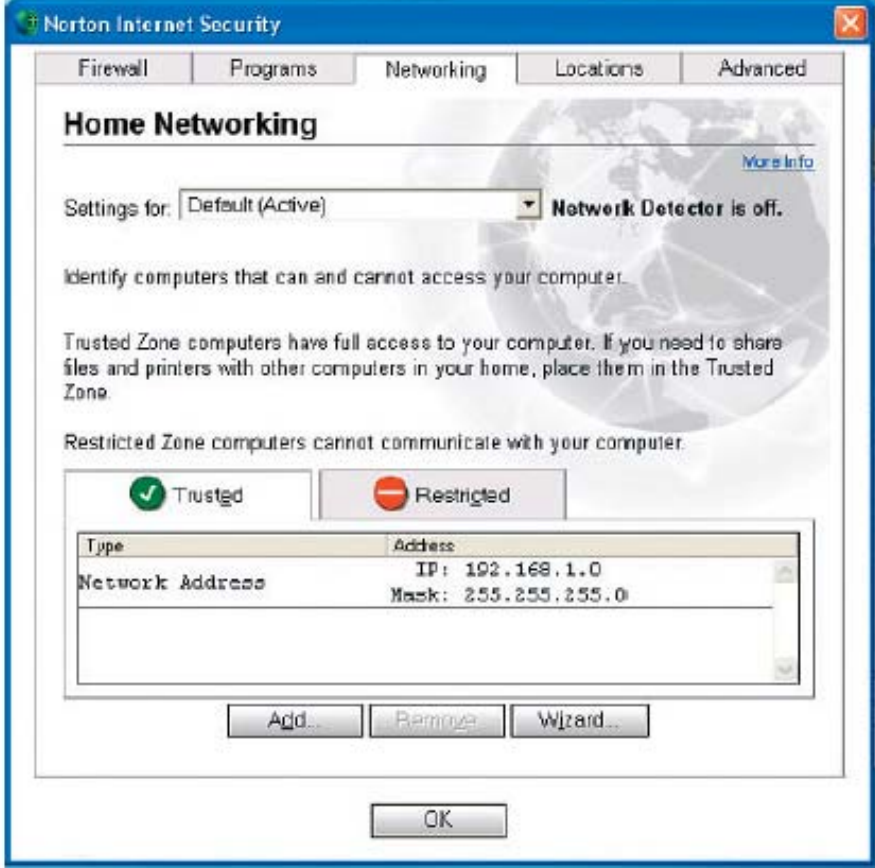
5 Make sure all the boxes are selected as shown in the picture below and click **Next**.



6 Click **Finish** to complete the setup.



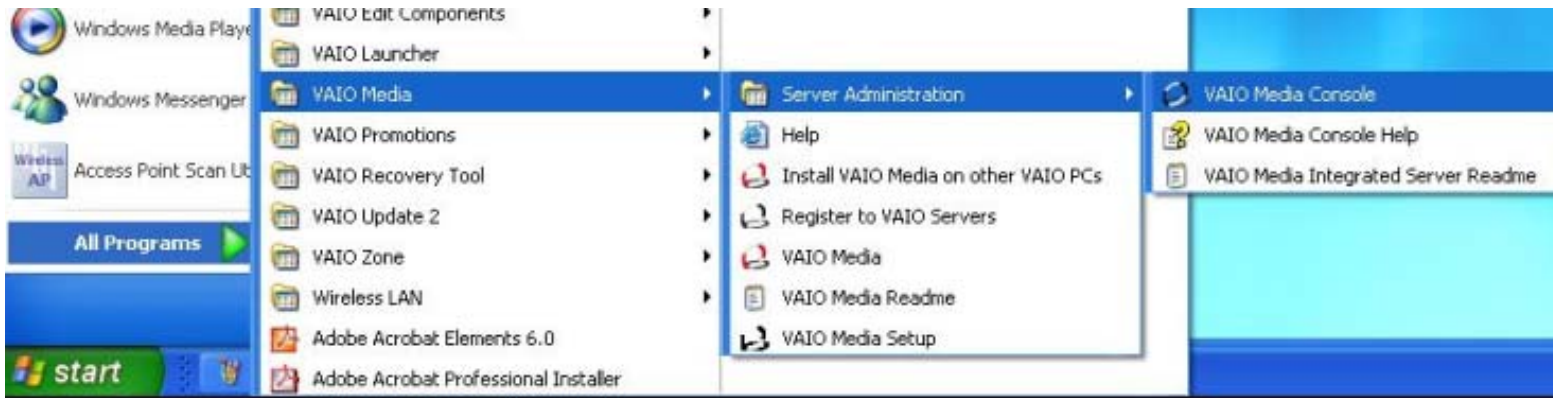
7 Now you should see the **Networking Tab**, this time with text - click **OK** to finish the process and close the window.



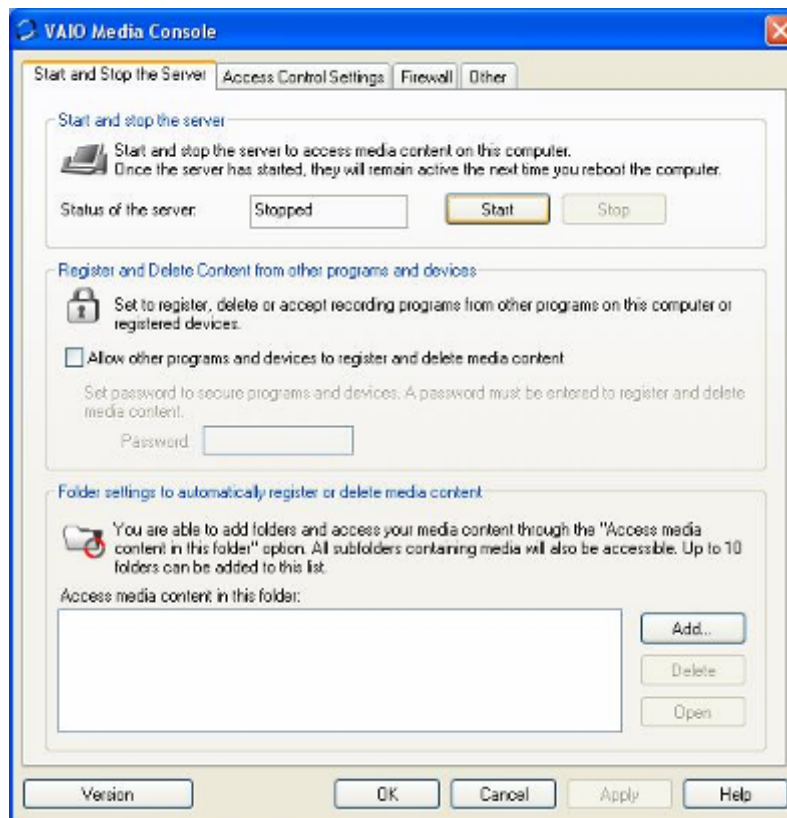
Configuration of Vaio Media

Activation of the sharing of the Vaio Media libraries

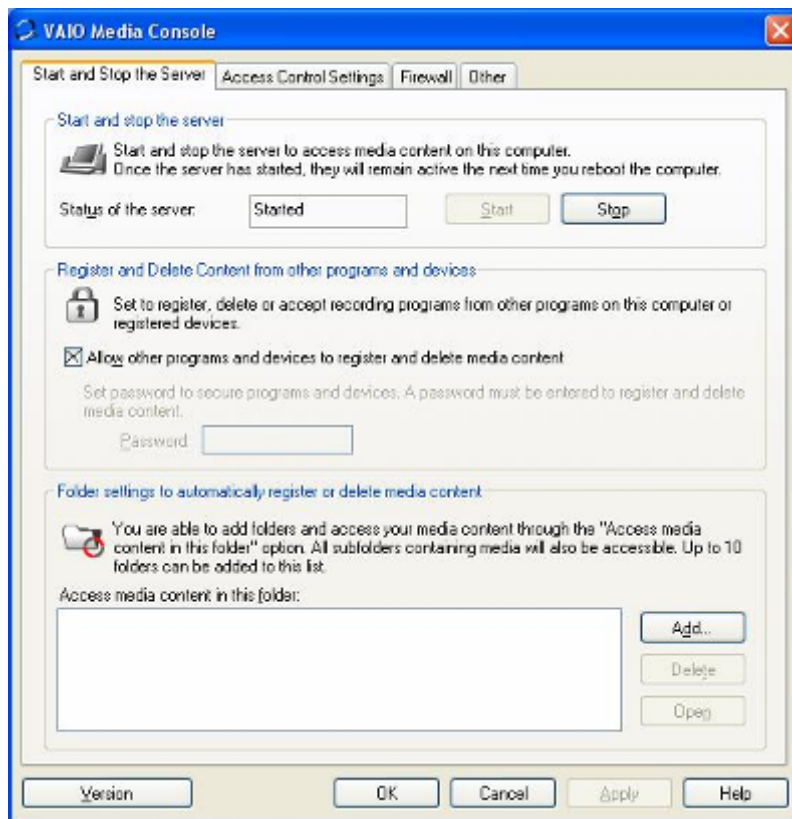
1 On the **Start** menu, point to **All programmes, VAIO Media, Server Administration** and then click **VAIO Media Console**.



- Under the **Start and shutdown of server** tab, click the **Start** button.



- Then select the check box next to **Allow other programs and devices to register and delete media content**.



Before confirming by clicking the **OK** button, think about how you wish to organise the contents which will be displayed on the TV, following what is explained in the next paragraph *Setting of folders for multimedia content*.

Setting of the folders for multimedia content

Using **Vaio Media Console**, it is possible to organise the contents which can be accessed from the TV, by means of Network Media Receiver, adding (up to a maximum of 10) or deleting folders which appear in the menu on the screen.

If, for example, you wish to organise your menu by type of content, you can create three folders on the PC named as follows:

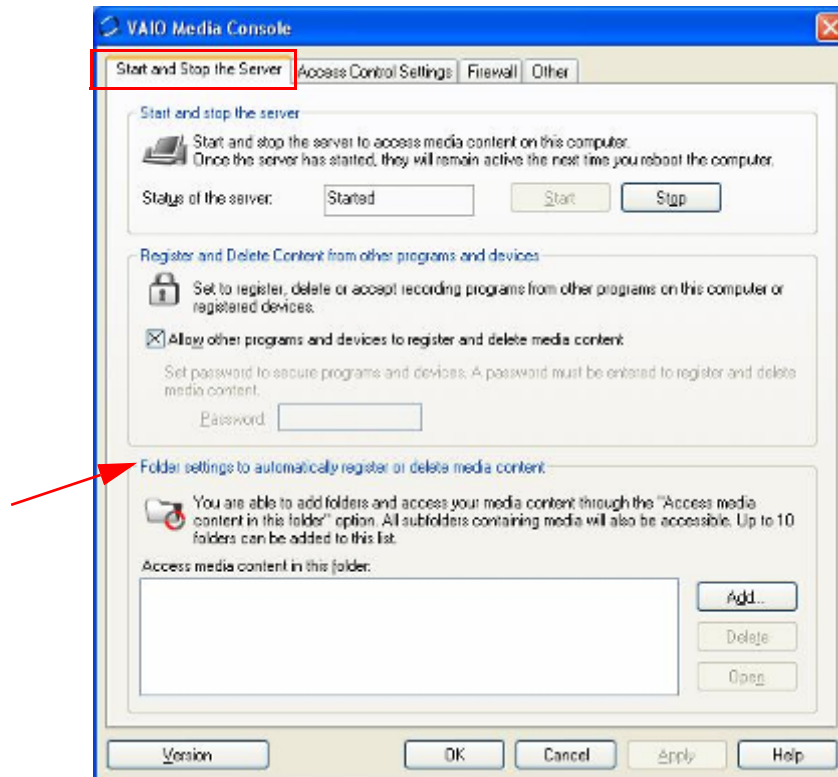
- Personal photo album
- Clips
- My favourite songs

Once created, in the folder **Personal photo album**, you will have your images (jpeg or full photographic albums), while in the **Clips** folder it is possible to store all the video contents (Mpeg2, DivX, imported files from a digital video camera), and in **My favourite songs** audio files (mp3 and wav).

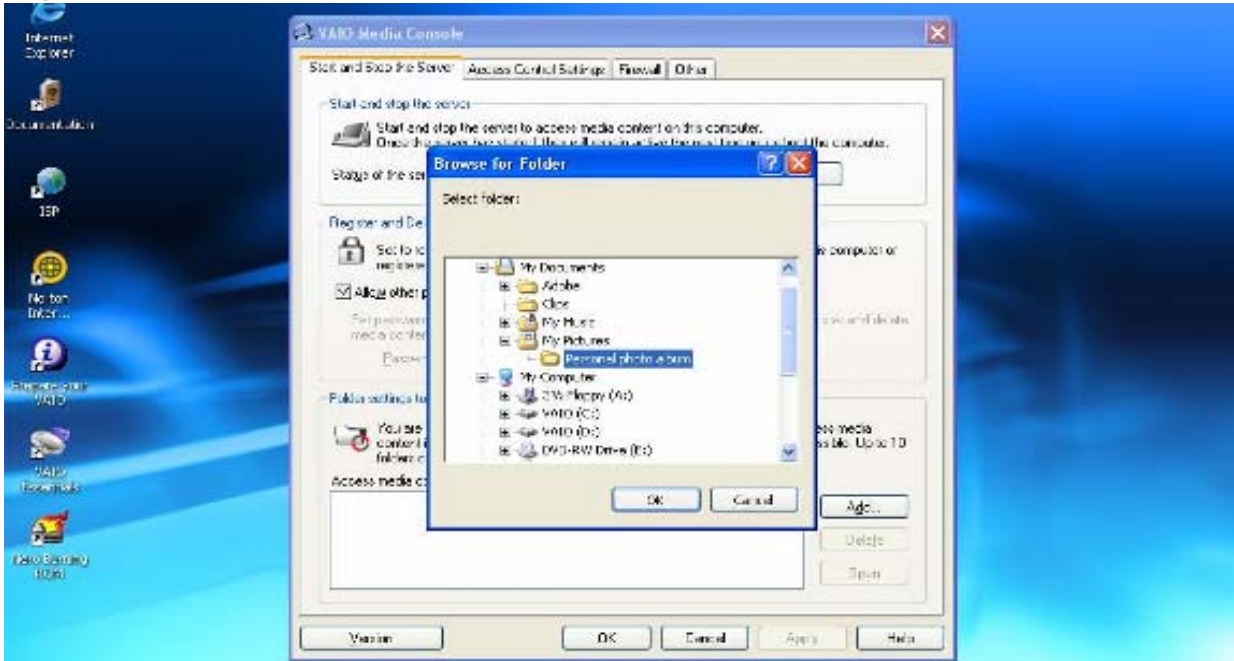
Going back to the window **Vaio Media Console** and pressing the **Add** button, it is possible to import the folders previously created (up to a maximum of 10).

Starting with the Personal photo album folder:

- 1 Under **Folder settings to automatically register or delete media content**, click the **Add** button.

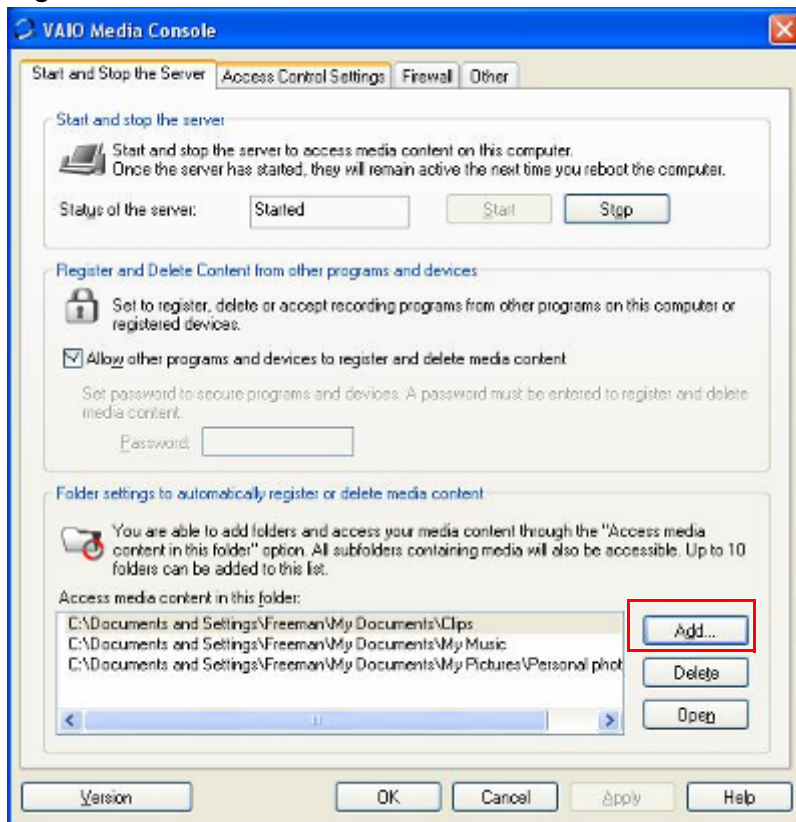


2 Select the path of the desired folder and click **OK**.

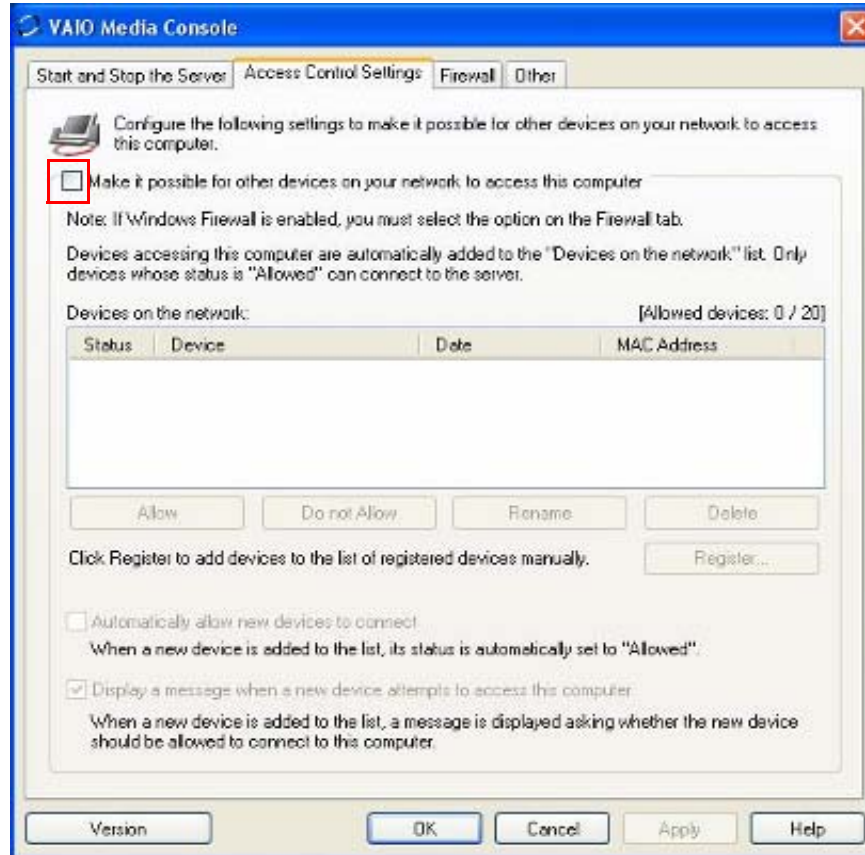


You can repeat the two steps described above, for other folders which you intend to use (in our example **Clips** and **My Music**).

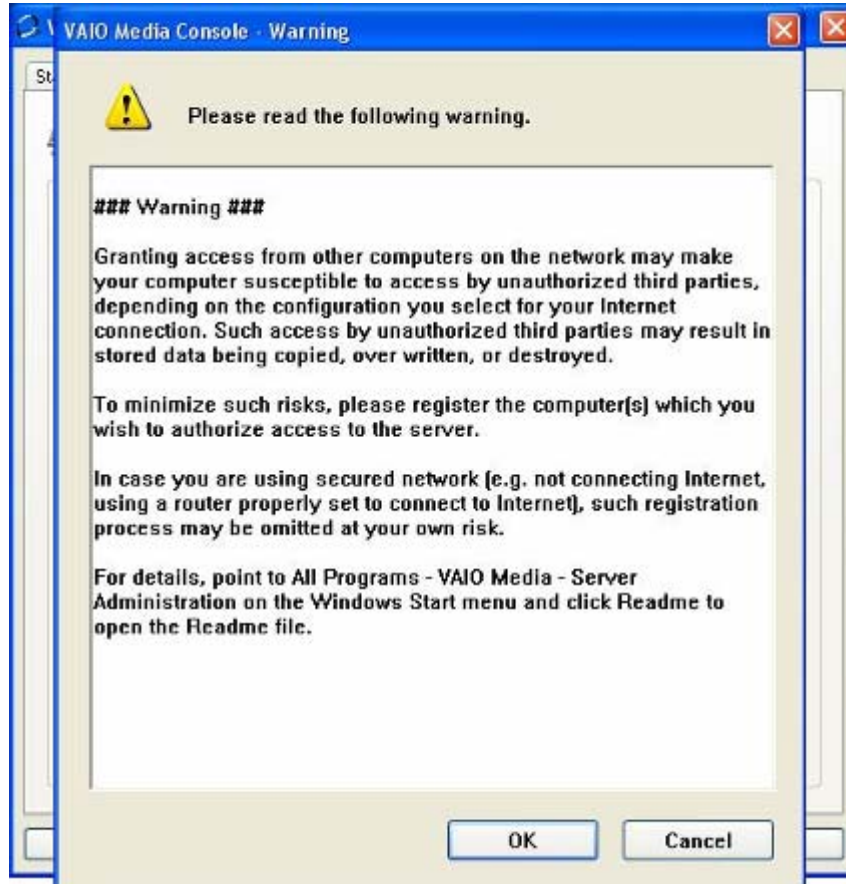
- Click the **Access control settings** tab.



- 4 Select the check box next to **Make it possible for other devices on your network to access this computer.**

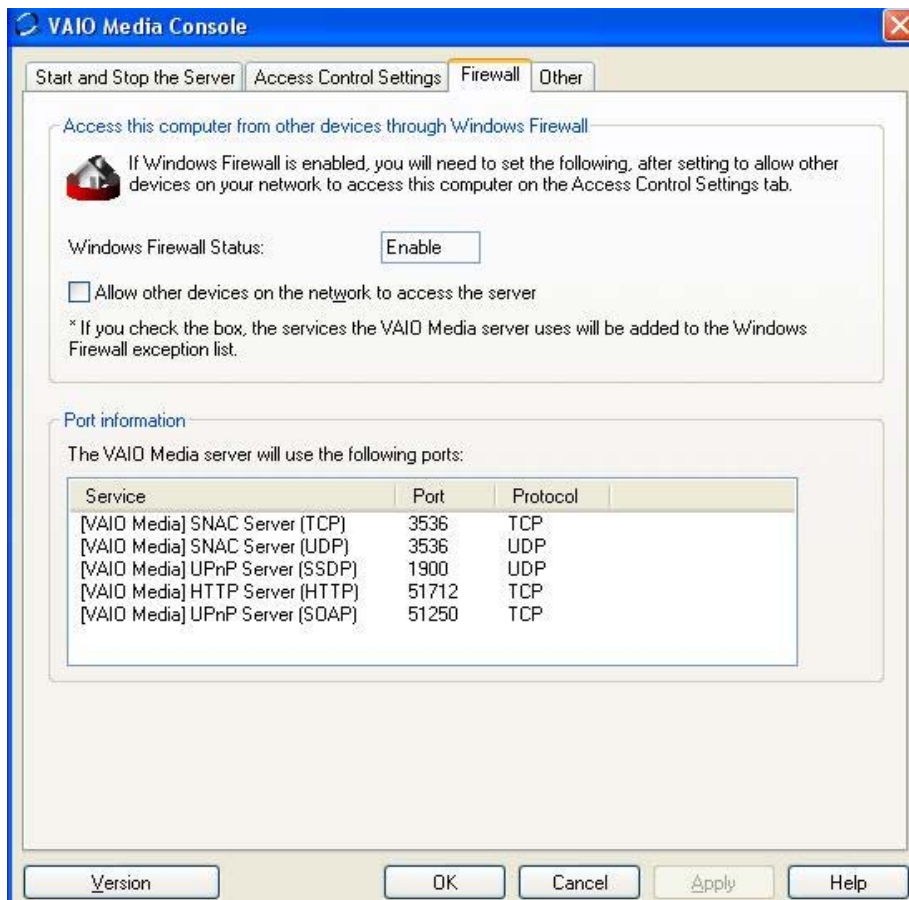


- 5 A warning message will appear - click **OK**.

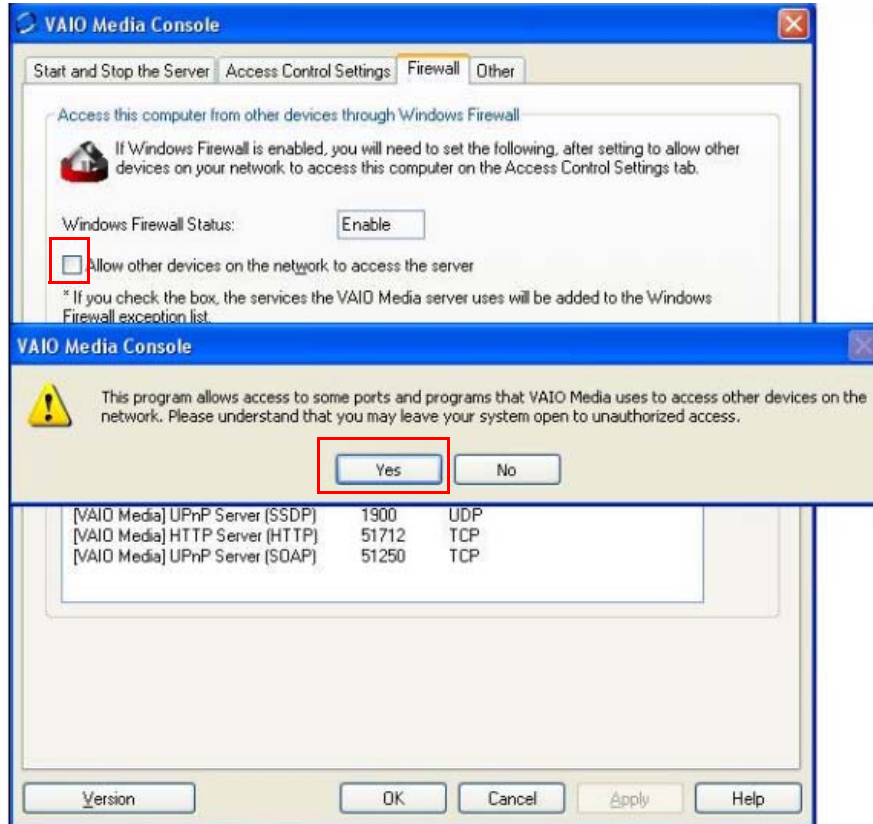


- Another message will appear – click **OK** and select **Automatically allow all new peripherals to connect**.



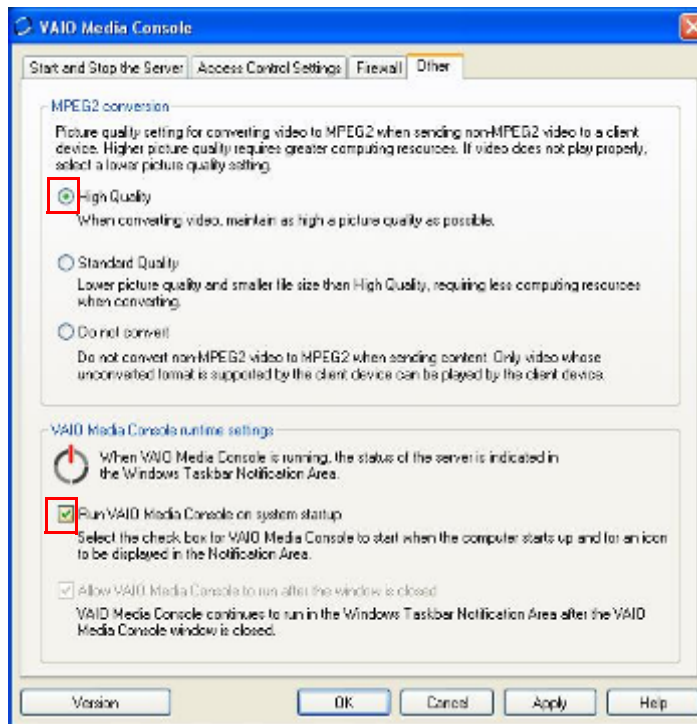
7 Click the **Firewall** tab.

- 8 Select the check box next to **Allow other peripherals in the network to access the server** and on the following message confirm by clicking **YES**.



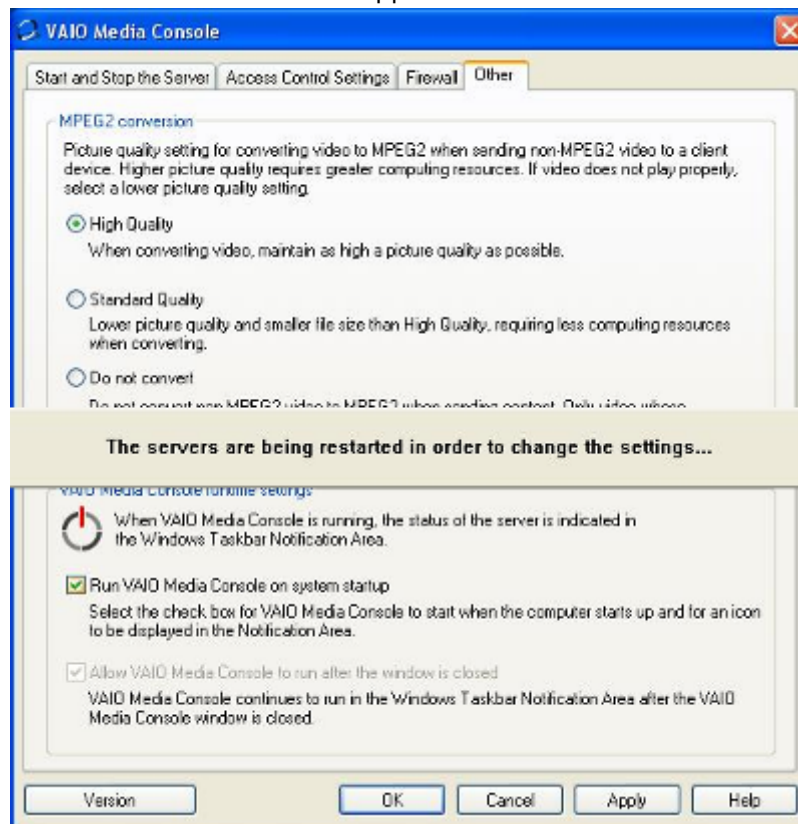
9 Click on the **Other** tab and select the options:

- High quality**
- Run VAIO Media Console at start of the system**

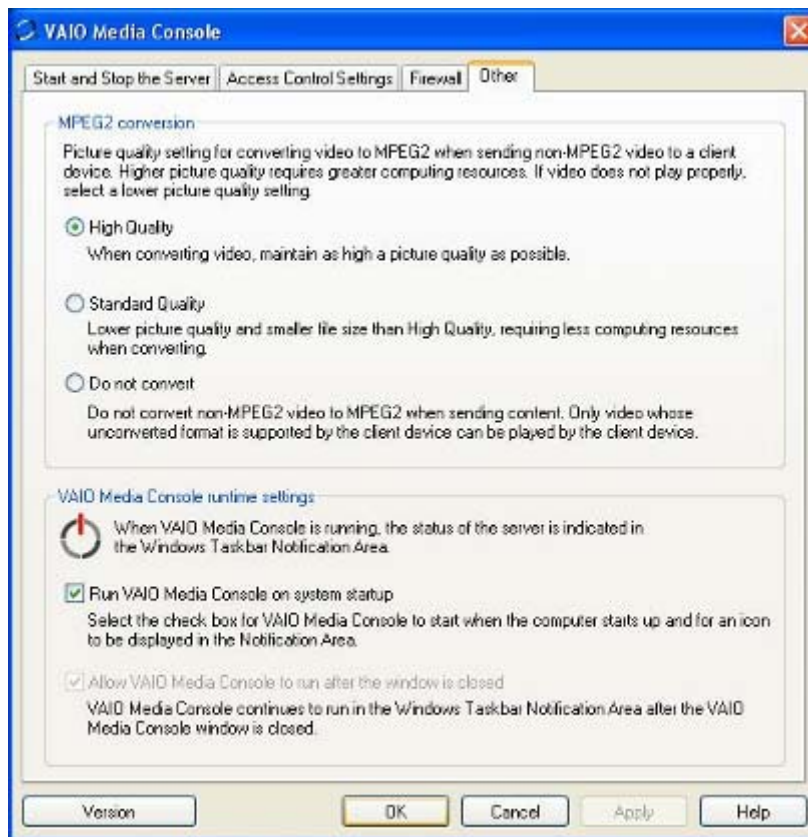


10 In order to implement the changes made so far, click **Apply**.

The system restarts the server for the modification of the applications.



11 Click OK.



Configuration of the Network Media Receiver

Configuration of the Network Media Receiver (VGP-MR100E)

Ensure that the unit is connected to the TV as described in the section [Connecting the Network Media Receiver to the television set or the video recorder](#).

- 1 Switch on the television and go to the video input to which the Network Media Receiver is connected.

Configuration of the Network Media Receiver

- 2 Pressing the green button marked POWER on the remote control, switch on the Network Media Receiver unit. The following screen will appear.



- 3 Press the button marked OPTIONS on the remote control. This screen will appear.



Note that the system is set up for the English language. It is possible to modify this option, as described in the next section.

Changing the language of the system

- 1 From the **System settings** screen, by means of the directional arrows on the remote control, select **Language Settings**. Confirm with the **SELECT** button.



- 2 A screen will appear on which the word **English** is selected. Use the directional arrows on the remote control to select the language of your choice and press the SELECT button to confirm.



- 3 Go to **OK** and confirm with the SELECT button on the remote control.



You will be back to the main screen for **System Settings**, which is now renamed, in accordance with the chosen language.

Modification of the TV settings

The system gives the possibility to set the video quality for the Network Media Receiver according to the type of television set available, either traditional (cathode ray tube) or digital (LCD or plasma).

- 1 By pressing the OPTIONS button on the remote control, the main screen for **System settings** will appear; by means of the directional arrows select the item **TV type** and confirm with the SELECT button.



- In the case of a traditional TV set (with cathode ray tube) select **Standard Definition TV** (Default Configuration). Otherwise, in the case of a plasma or LCD television, select **High Definition TV** (see [Component Connection for HD TV](#)) then confirm your choice with the SELECT button.



- 3 Go to **OK** and confirm with the SELECT button on the remote control. The system will ask you if you wish to keep the new settings. Select **OK** and confirm with SELECT.



Modification of network settings

- 1 By pressing the OPTIONS button on the remote control, the main **System settings** screen will appear; by means of the directional arrows select the option **Network settings** and confirm with the SELECT button.



- 2 With the SELECT button on the remote control, select **Network type**.



Two types of networks are contemplated and it is therefore possible to choose between two modes:

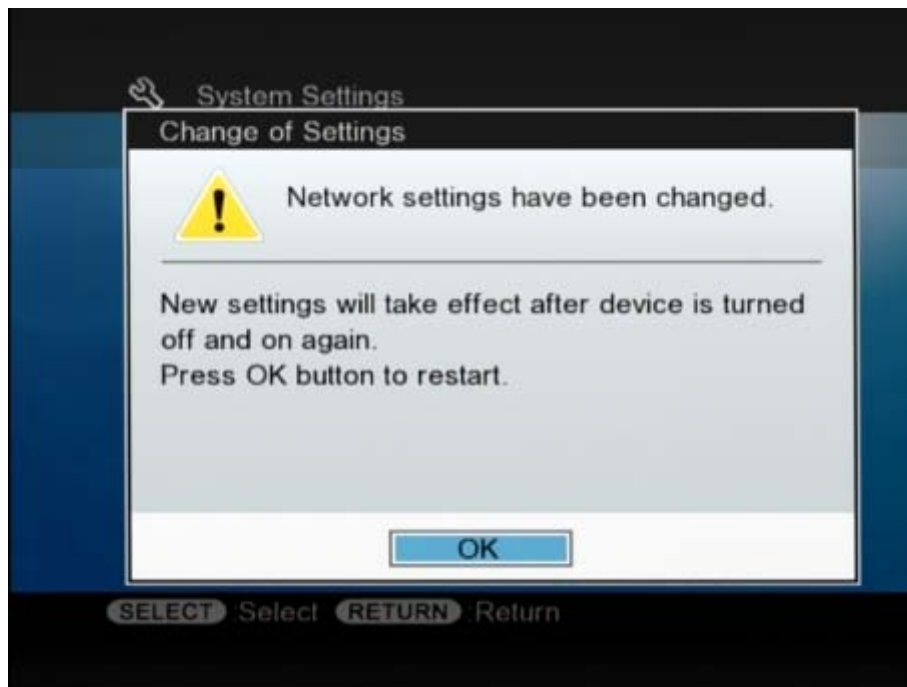
- ❑ **Wired LAN**, that is a direct connection between the Network Media Receiver and the PC, through an Ethernet cable (included in the package).

- ❑ Wireless LAN, that is a wireless connection between the BT Voyager Router connected to your Vaio computer and the Network Media Receiver.



- 3 By means of the directional buttons on the remote control, select the wireless LAN option and confirm with the SELECT button.

A message will inform you that the new settings will come into effect only after the Network Media Receiver has been switched off, and then switched on again.



- 4 Confirm with the SELECT button on the remote control. The unit will automatically switch off.
- 5 Wait until the Network Media Receiver implements the modifications (the STATUS led will switch off and on quickly many times), and with the green button POWER on the remote control switch the unit on again, only after the STATUS led has definitively gone off.

- 6 By pressing the OPTIONS button on the remote control, the main **Systems settings** screen will appear; with the directional arrows select the option **Network settings** and confirm with the SELECT button.

- 7 Having returned to the **Network settings** screen, with the directional buttons on the remote control, select **IP address** and confirm with SELECT.



A screen will appear relating to the management of the IP address.

The IP (Internet Protocol) address allows the system to assign a number to the Network Media Receiver, an address which identifies it within the network you have created, regardless of the type of network created (wired or wireless).

The existing software in the Network Media Receiver allows you to carry out the configuration, and therefore the assignment of this identification number, as you think best, with three different options:

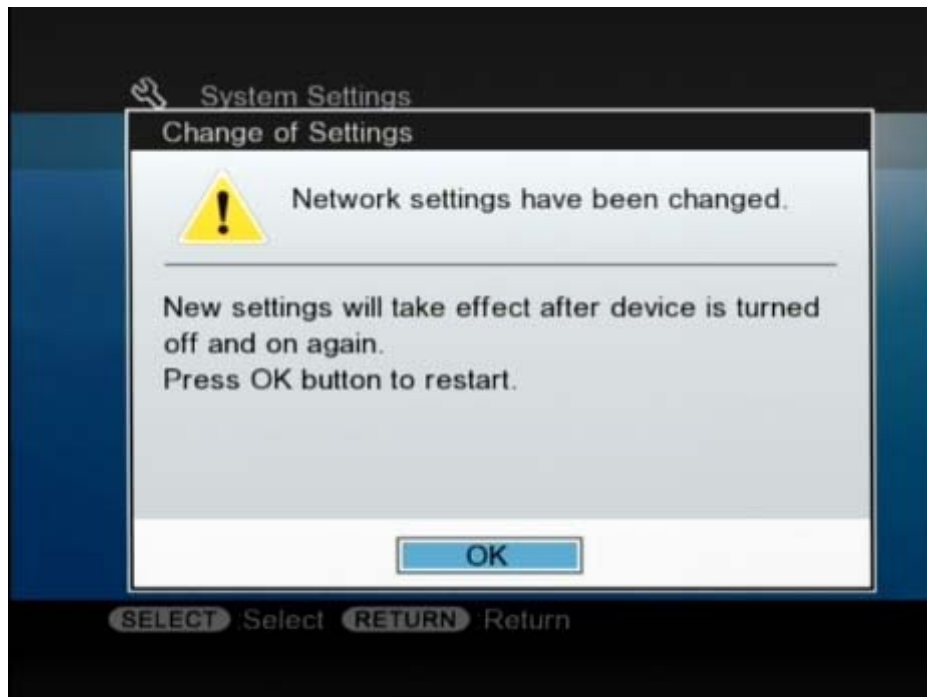
- ❑ **Automatic assignment (with router)**, for networks including a router, that is a device which, in automatic mode (DHCP, Dynamic Host Configuration Protocol), univocally assigns an IP address to the Network Media Receiver unit.
- ❑ **Automatic assignment (without router)**, for networks in which, although there is no router, the Network Media Receiver will nonetheless be able to be assigned automatically an IP address, an operation which is possible thanks to an internal DHCP server.
- ❑ **Manual assignment**, for networks in which the user decides to assign (in a non-automatic way) an IP address to the Network Media Receiver, in accordance with the IP addresses previously assigned to other devices.

Having already chosen before to configure the BT Voyager Router, the first option must be selected.

- 8 Using the directional arrows on the remote control, select the option **Automatic assignment (using router)** and confirm with SELECT.



- Using the directional arrows on the remote control, select **OK** and confirm with SELECT. A message will inform you that the new settings will come into effect only after the Network Media Receiver has been switched off, and then switched on again.



- Confirm with the SELECT button on the remote control. The unit will switch off automatically.

- 11 Wait until the Network Media Receiver implements the modifications (the STATUS led will switch off and on quickly many times) and, with the green button POWER on the remote control, switch the unit on again, only after the STATUS led has definitively gone off.
- 12 By pressing the OPTIONS button on the remote control, the main screen **System settings** will appear; using the directional arrows, select the option **Network settings** and confirm with the SELECT button.



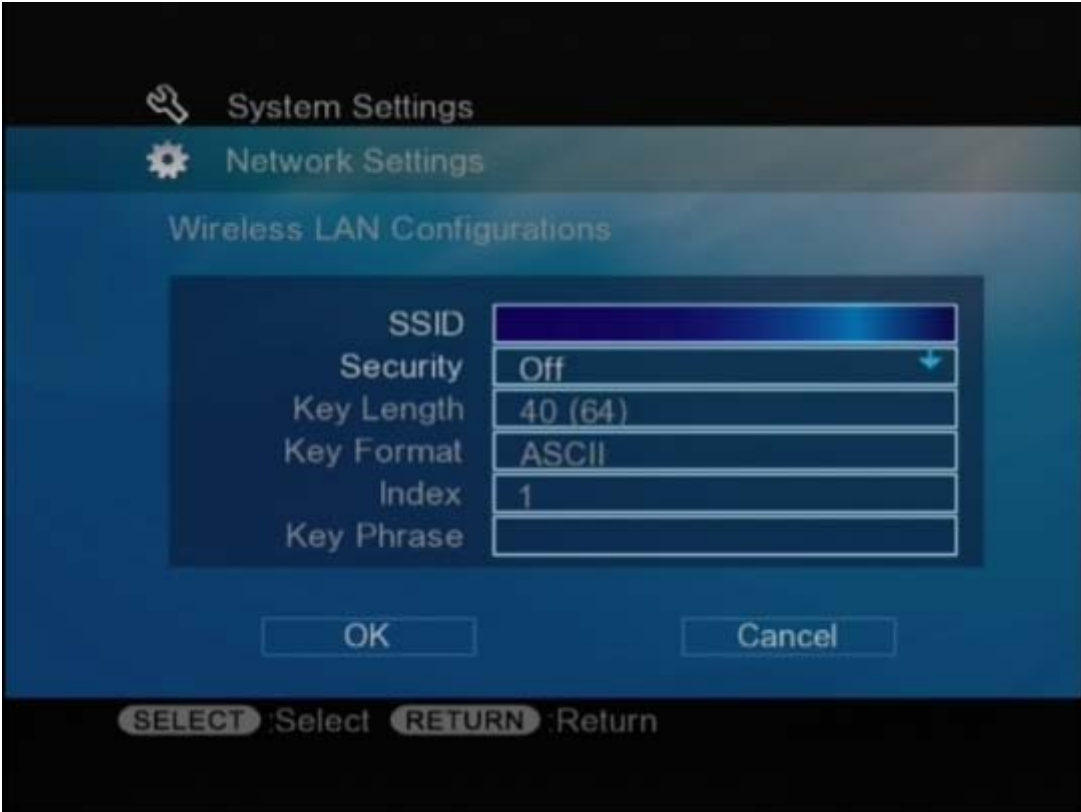
- 13 Returning to the **Network settings** screen, by using the directional arrows on the remote control, select **Wireless LAN configuration** and confirm with SELECT (as shown in the image above).

The screen below will appear. This will allow you to configure the Network Media Receiver so that it becomes part of the same wireless network previously created during the configuration of the BT Voyager router.

As you will notice, the page contains the same options which have already been examined and configured earlier on for the BT Voyager router and to which you should refer.

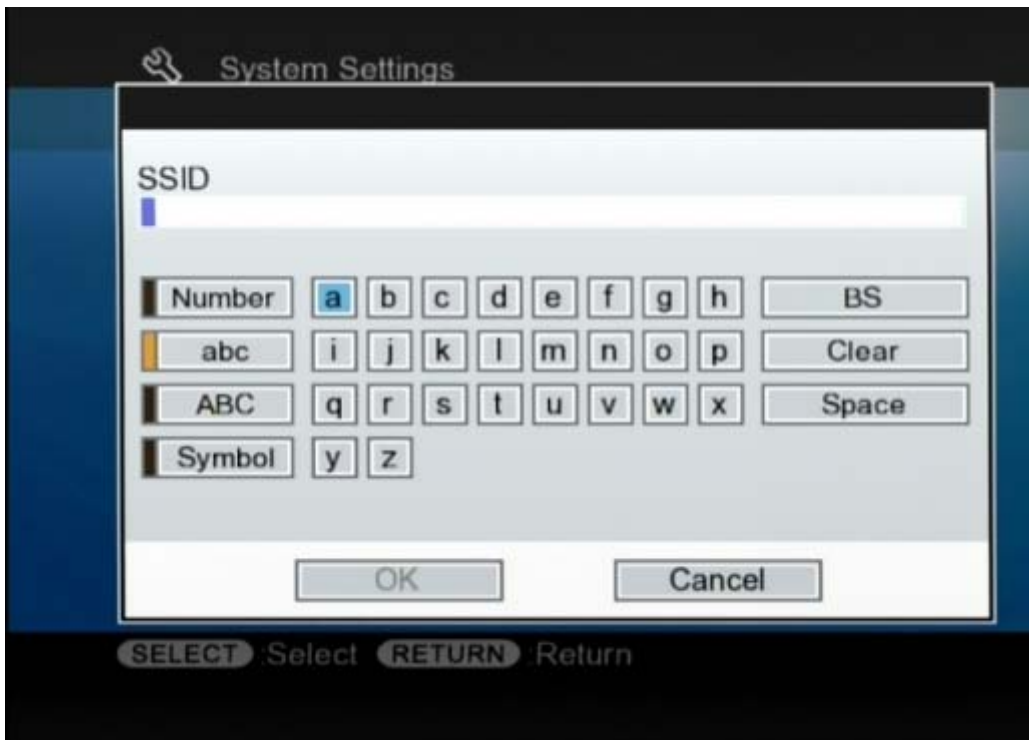
Configuration of the Network Media Receiver

In fact, all the devices which have to belong to the same WLAN (wireless network), must necessarily have the same SSID (Service Set Identifier), only in this way will the different pieces of equipment be able to communicate among themselves.

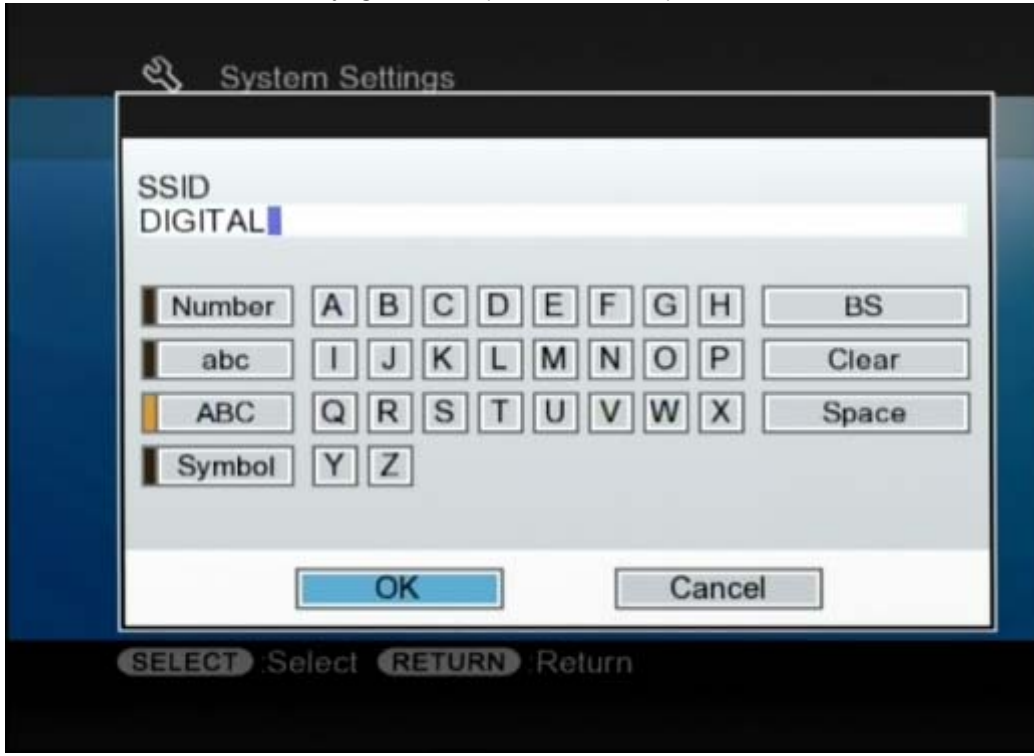


- 14 Using the directional arrows on the remote control, go to **SSID** and confirm with SELECT.
A screen will appear with a virtual keyboard, with which the same SSID already chosen during the configuration of the BT Voyager router can be entered.
Having previously chosen an SSID composed of characters in block capital (DIGITAL), it will be necessary to activate the “block capitals” key first (the ABC case).

- 15 Using the directional arrows on the remote control, select **ABC** on the left hand side of the virtual keyboard and confirm by pressing SELECT.



16 It is now possible to enter on the keyboard, confirming every single character entered with SELECT, the same word which has already been chosen as SSID for the BT Voyager router (that is DIGITAL).



17 With the SELECT button select **OK** to confirm the setting.



The system will go back to the main **Wireless LAN configuration page** and, at this point you will note that the name which has been assigned to SSID is registered.

- 18 Using the directional arrows on the remote control, go to the option **Protection** and press the SELECT button -The button becomes blue.



- 19 Using the directional arrows on the remote control, modify the content by selecting **WEP** (Wired Equivalent Privacy) and confirm with the SELECT button -The button will once again become blue.



- 20 In accordance with whichever choice has been made for the BT Voyager router, confirm the three following items.

- Key length**, leave unchanged 40 (64)
- Key format**, leave unchanged ASCII
- Index**, leave unchanged

The final remaining option **Key phrase** corresponds to the password used to access the network, a password chosen earlier on during the BT voyager router configuration with the option Wep key.

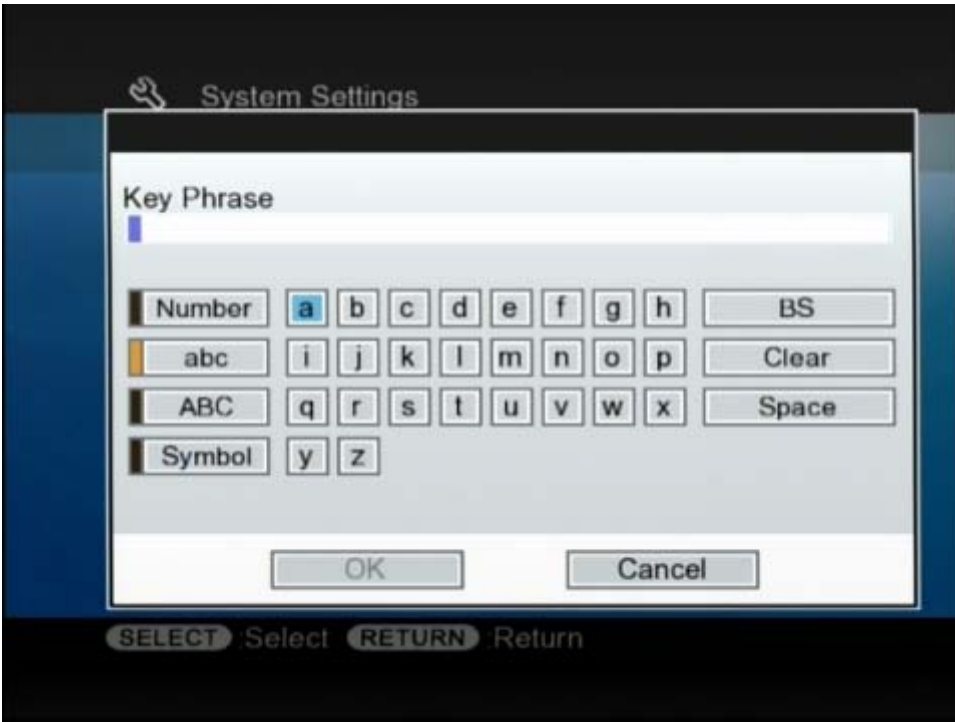
- 21 Using the directional arrows on the remote control, go to **Key phrase** and press the SELECT button.



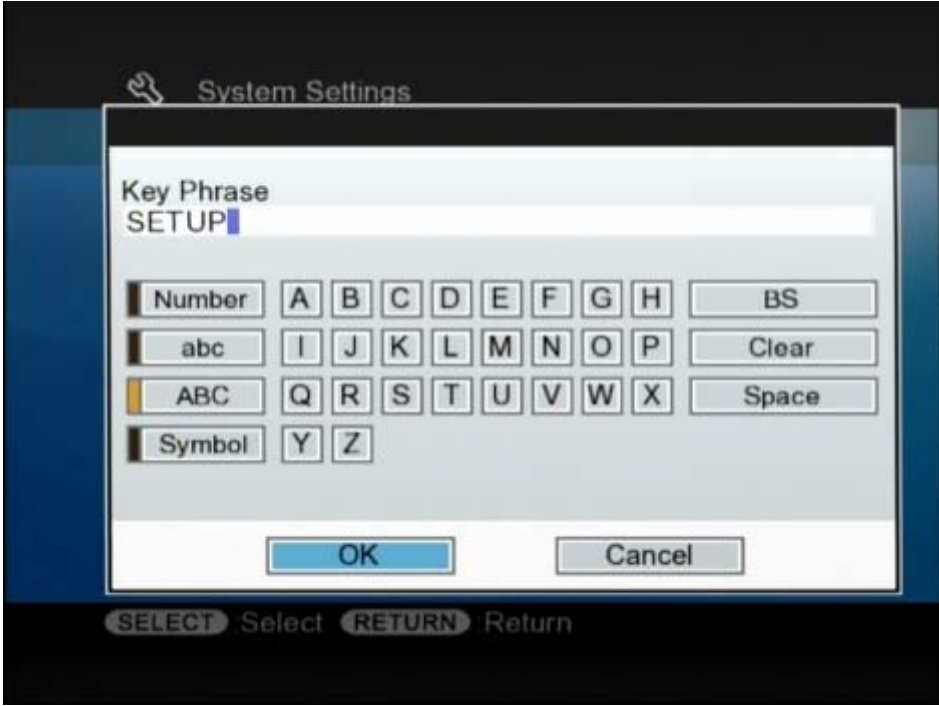
The same screen seen before representing a virtual keyboard will appear.

Having chosen already via the BT Voyager router a “Key phrase” composed of characters in block capital (SETUP), it will be necessary to activate the block capitals key first (the case **ABC**).

22 Using the directional arrows on the remote control, select the case **ABC** on the left hand side of the virtual keyboard and confirm by pressing SELECT.

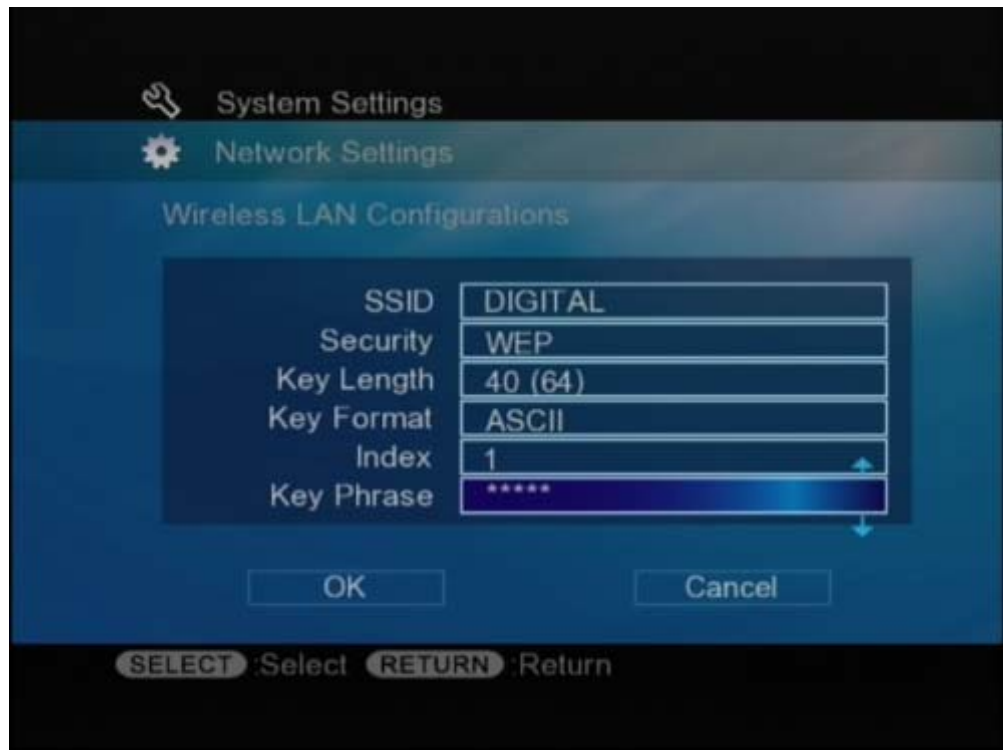


23 It is now possible to enter on the keyboard, confirming every single character with SELECT, the same word which has been chosen as **Wep key** on the BT Voyager router (that is DIGITAL).



24 With the SELECT button select **OK** to confirm the setting.

The system will go back to the main page for **Wireless LAN Configuration**, and you will note at this point that asterisks have been inserted to conceal the **key phrase**.



25 If all the data entered in this section are correct, the entire process can be confirmed by selecting **OK** and by pressing the SELECT button.



- 26 A message will inform you that the new settings will come into effect only after the Network Media Receiver has been switched off, and switched on again.



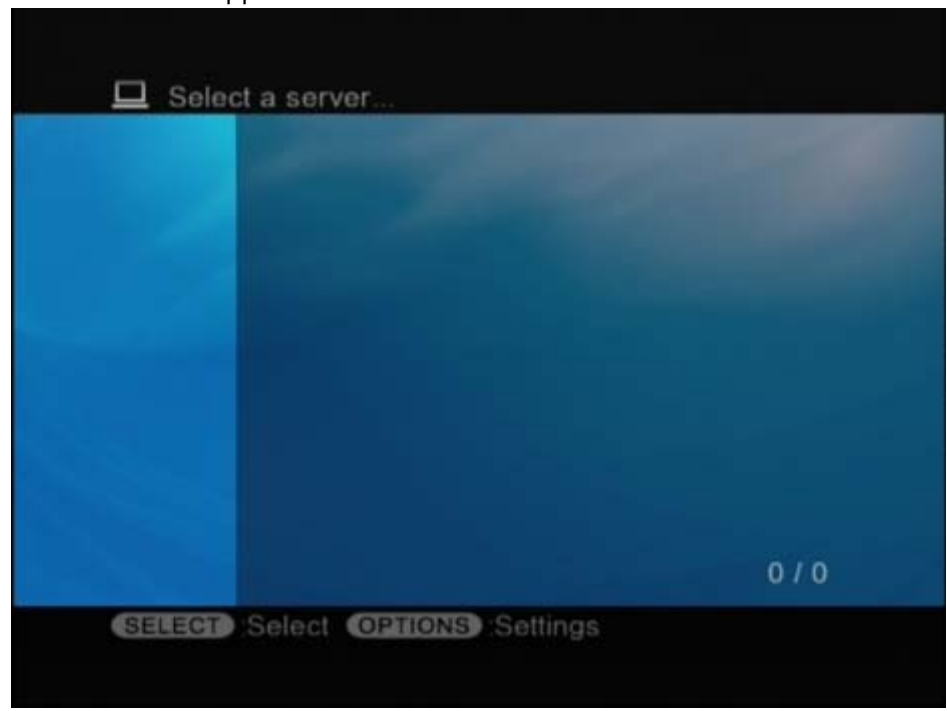
- 27 Confirm with the SELECT button on the remote control. The unit will switch off automatically.
- 28 Wait until the Network Media Receiver implements the modifications (the STATUS led will, switch off and then quickly switch on again many times).

Using the Network Media Receiver

Finding the Server

- 1 With the green POWER button on the remote control, switch on the unit, only after the STATUS led has definitively gone off. The WIRELESS led on the unit will switch on, as evidence of the successful creation of the wireless network (if you have chosen to create a wireless LAN).

The screen with the user interface will appear on the TV.



- 2 Press the **OPTIONS** button on the remote control . A short list will appear with three alternatives, go to **Updates** and press the **SELECT** button.



The system updates itself, and at this point it will find the server adding it to the list of available servers.



 N.B. The name that appears in this list is the same name assigned to the PC following this procedure:

Right-click on the **My Computer** icon and click the option **Properties**.

Select **Computer name** and go to **Change**.

Change the name of the PC and confirm with **OK**.

Restart the PC to bring into effect the new settings.

- 3 Press the SELECT button on the remote control. The main window of **the Integrated Server Sony** will appear. In this page are displayed all the folders whose contents, through Network Media Receiver, can be shared on the television or in the Home Cinema system.



The system allows the storage of multimedia contents within:

- ❑ **Registered folders**, that is those folders which have been installed by means of **VAIO Media Console** (see [Setting of the folders for multimedia content](#)).
- ❑ **Organise by artist (music)** , that is a folder where audio contents are organised by artist; In fact, if the user chooses to use programmes such as **SonicStage**, they can import (from the Internet, from CD, etc.) and organise the tracks by artist on the PC's hard disk, and **VAIO Zone** can show the same organization.
- ❑ **Organise by category (music)**, that is a folder where the audio contents are organised by category; in fact, if the user chooses to use programmes such as **SonicStage**, they can import (from the Internet, from CD, etc.) and organise the tracks by category on the PC's hard disk, and **VAIO Zone** can show the same organisation.
- ❑ **Recordings with timer**, that is a folder in which the contents are television recordings made using the **TIMER** function of **VAIO Zone**.
- ❑ **Recorded Video**, that is a folder in which the contents are television recordings on hard disc in Mpeg2 format, the so-called video capsules, made using **VAIO Zone**.

Registered folders

From the main screen of the integrated Sony server it is possible to choose, among the others, the option **Registered folders**.

Within the screen **Registered folders**, a new list of options will be displayed which correspond to the folders automatically shared by the **VAIO Media Console** and **VAIO Zone** programmes:

- ❑ Contents
- ❑ Documents
- ❑ Samples
- ❑ VAIO Sample

Besides these four main options, there are those folders installed by the user via **VAIO Media Console** (see [Setting of the folders for multimedia content](#)):

- Personal photo album
- Clips
- My favourite songs

Using the directional arrows and the SELECT button of the remote control, to confirm the choice, it is possible to display their content on the television and therefore access them from the TV, instead of listening to them through the Hi-Fi or Home Cinema system.

One example of the displayed folders can be found in the following picture.



Examples of use of the Network Media Receiver browser

After having correctly configured the system for the wireless unit, the use of the browser is extremely simple and quick. Below are shown a few examples of usage.

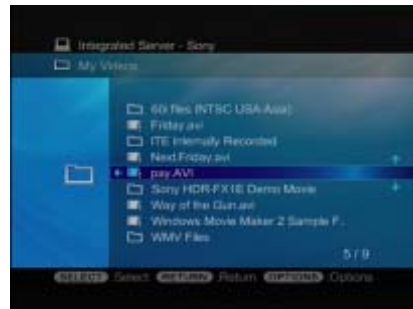
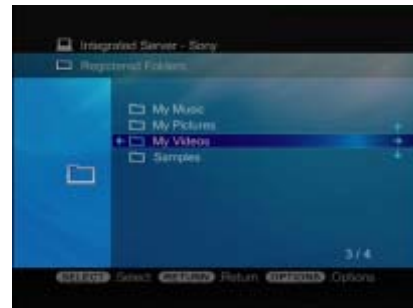
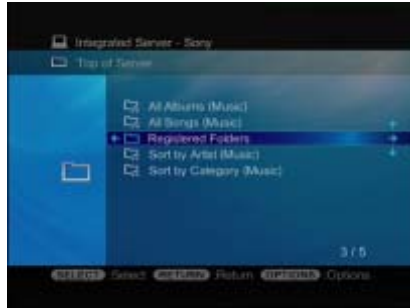
1 DISPLAY A PICTURE (Jpeg, Gif, Png, Tiff, Bmp)

From the initial screen **Integrated Server-Sony**, select **Registered folders** and press SELECT, select **Personal photo album** and press SELECT, then on the new screen choose one of the files and confirm your choice with SELECT. The picture will appear full-screen.



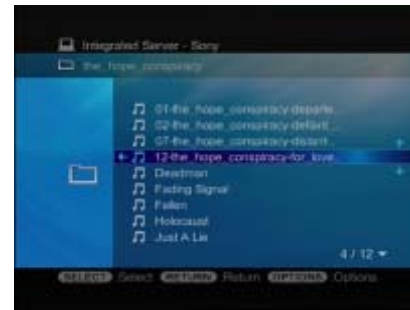
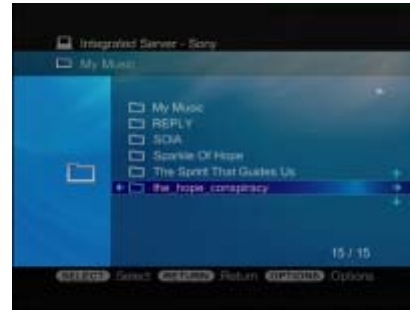
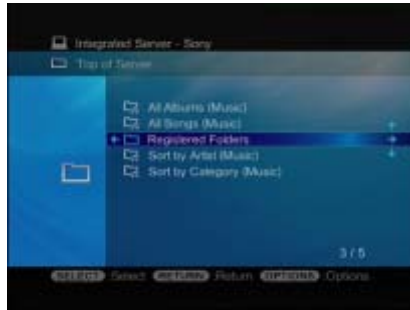
2 PLAY A CLIP (Mpeg1e 2, Divx, Wmv, DV-AVI-HDV)

From the initial screen **Integrated Server-Sony**, select **Registered folders** and press SELECT, select **Clips** and press SELECT, then on the new screen choose one of the files and confirm your choice with SELECT. The image will appear full-screen.



3 LISTEN TO A SONG (Atrac3, Atrac3Plus, Wave, Mp3, Wma)

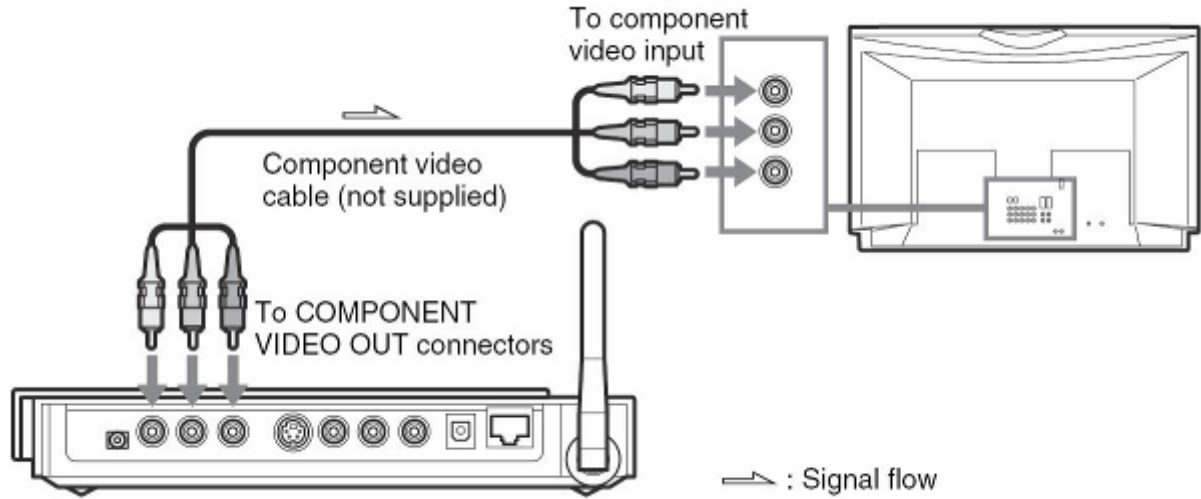
From the initial screen **Integrated Server-Sony**, select **Registered folders** and press SELECT, select **Clips** and press SELECT, then on the new screen choose one of the files and confirm your choice with SELECT. A final screen will appear in which, if you have used **SonicStage** to import the files to the PC, it is possible to combine a picture to use as an album cover.



Component Connection for HD TV

In order to be able to correctly display television contents or recordings made in high definition, it is recommended that you connect the Network Media Receiver (VGP-MR100E) by means of a COMPONENT cable so as to make the actual quality visible.

- 1 Connect the COMPONENT cable to the sockets on the TV and on the Network Media Receiver, respecting the colour correspondence.



- 2 Connect the power plug to the electrical current outlet (220V).

For the creation of an environment and the sharing of contents, please refer to the previous sections (see [Modification of network settings](#)), observe that the screen shows the option **Wired LAN** instead of **Wireless LAN**.

Types of files managed by Network Media Receiver

Below is an explanatory and illustrative table of all the types of files managed by the PC-Network Media Receiver system:

Category	Type of Content	Files supported
VIDEO	Video capsules recorded on your VAIO through Giga Pocket software, or other video files stored in the PC.	*Video capsules *MPEG 1 *MPEG 2 **According to the type of PC, the following files could also be supported: *WMV
MUSIC	Musical files and Play list on your VAIO.	*LPCM (WAV) *MP3 *According to the type of PC, the following files could also be supported: *WMA *ATRAC3 *ATRAC3plus
PHOTO	Photos or static images on your VAIO, also in specific folders.	*JPEG *PNG *According to the type of PC, the following files could also be supported: *Bitmap *GIFF *TIFF