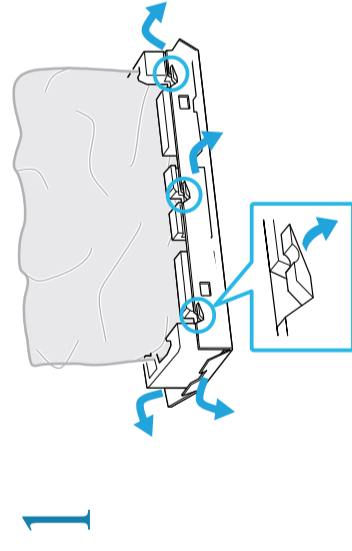
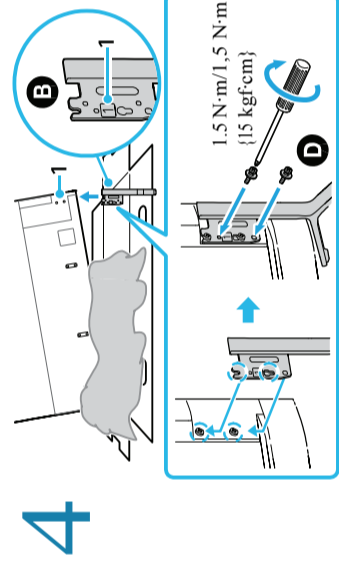


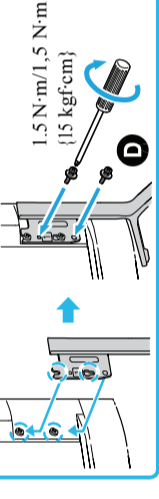
# Udhëzime për përdorim



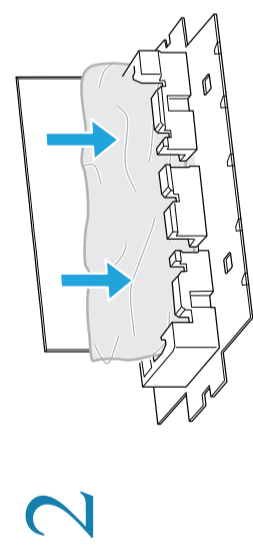
1



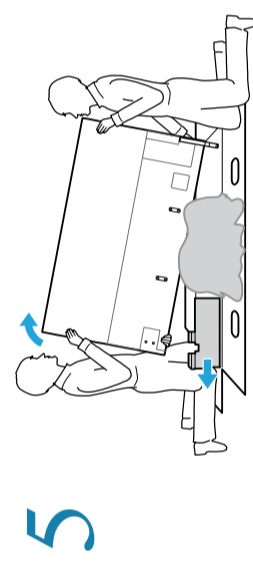
4



1.5 N·m / 1.5 N·m  
(15 kgf·cm)



2



5

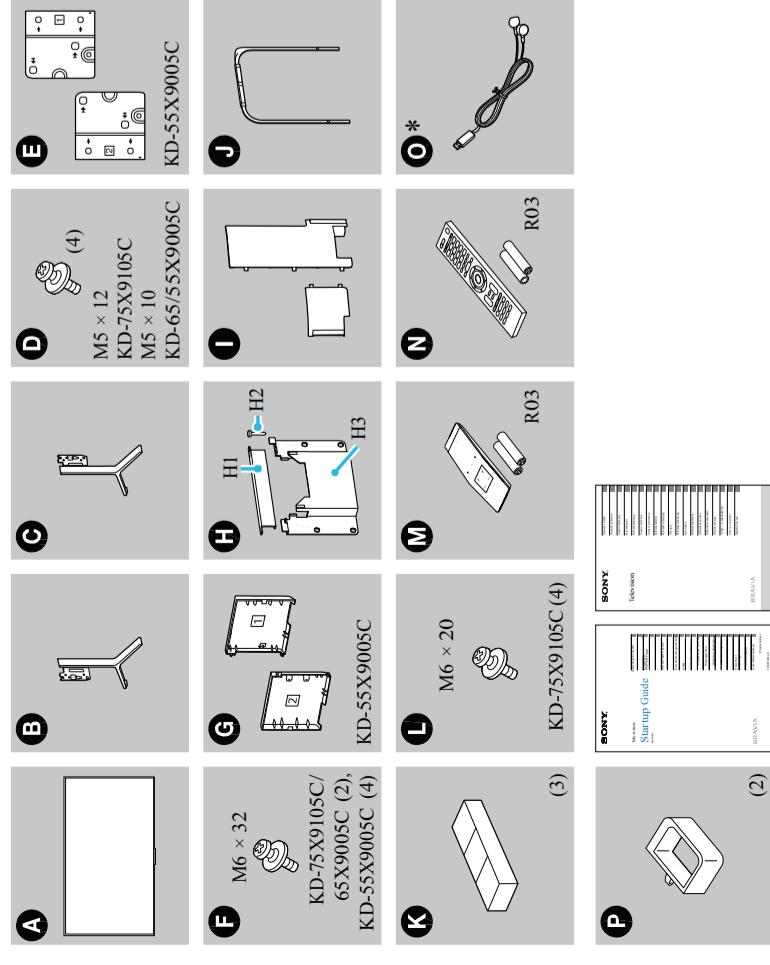


4598696121

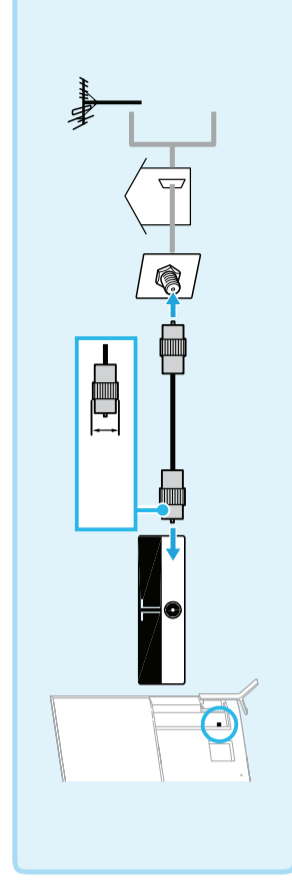
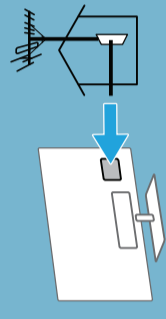
© 2015 Sony Corporation 4-559-956-12(1)

KD-75X9105C / 65X9005C / 55X9005C

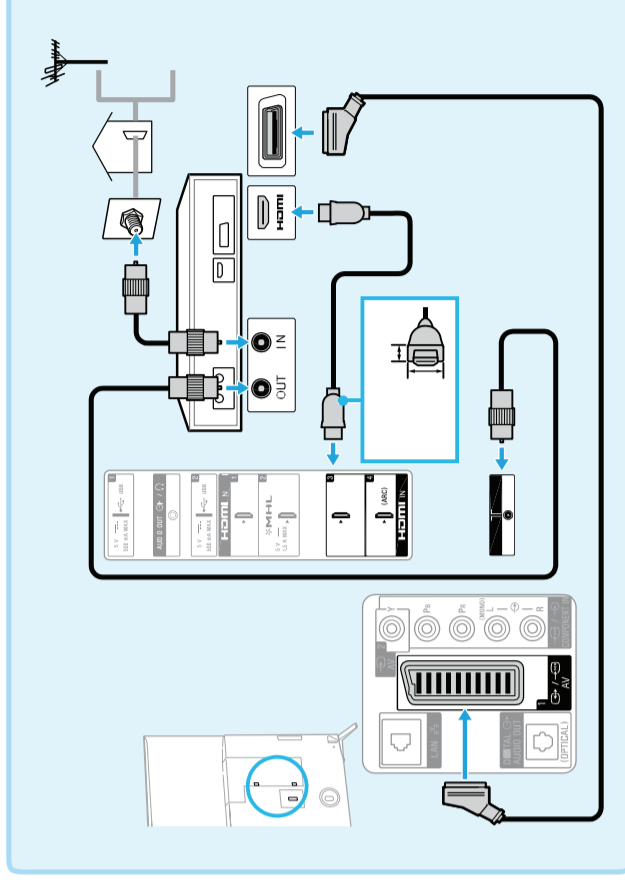
BRAVIA



\*Vetëm në rajone/vende të kufizuara.



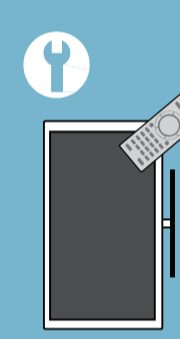
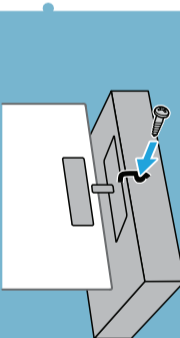
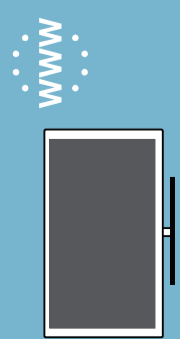
A



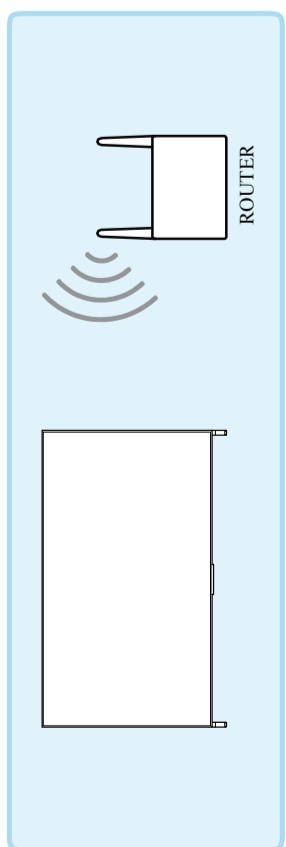
B

Kyqje për antenë të jashtme ose kablllovesë (A), me marrës kablllovesë/satelitor digjital (B). Zgjidhni HDMI ose SCART lidhje.  
Shikoni Manualin e Përdorimit për informacione tjera për lidhjen.  
\*Nëse funksionin incizimi, lidhni me [Per sinjal] [Per funksionin] dhe etiketat mund të ndryshojnë varesisht nga TV modeli.

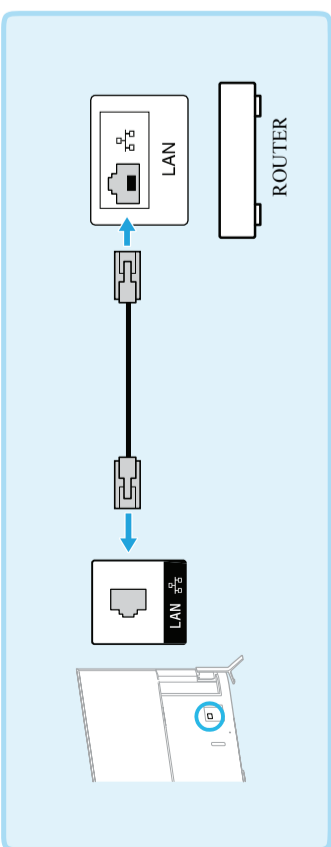
Shikoni „Informacione sigrave“ në Manualin për përdorim për informacione të TV-ve.  
Për të subtitruar postera e instalimit në postera tjetër, shikoni Manualin e përdorimit.



A



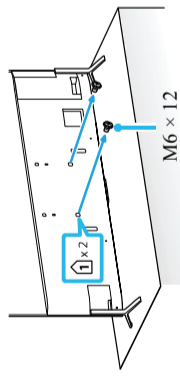
B



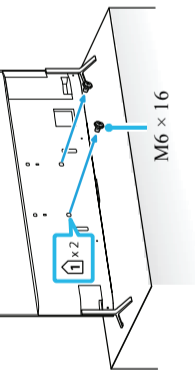
Internet lidhje me tel (përdorni kordon të kategorisë 7 LAN) (A), pa tel (B). Shikoni manualin e prodhuesit ose manualin që vije me rutern për rregullimin e ruternit.

1

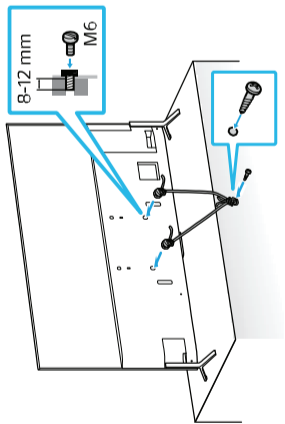
KD-75X9105C



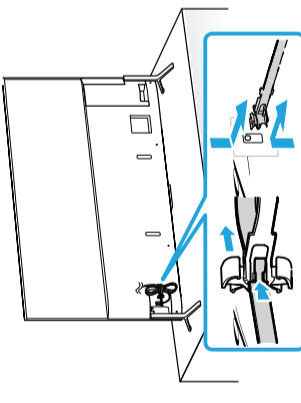
KD-65/55X9005C



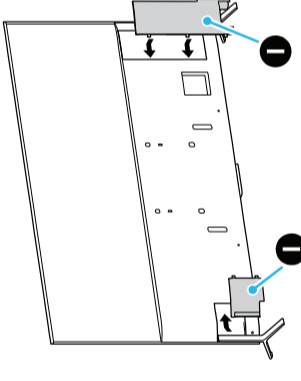
2



3

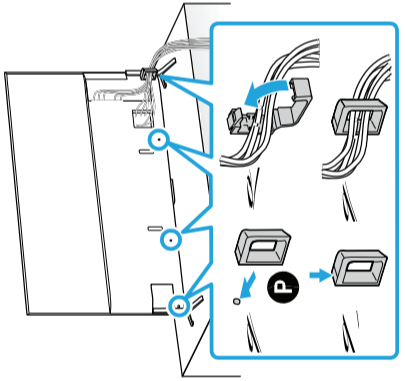


5

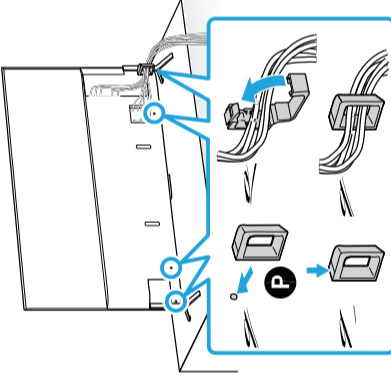


4

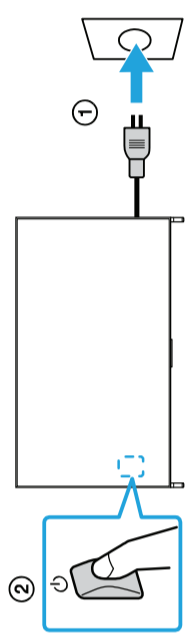
KD-75X9105C/65X9005C



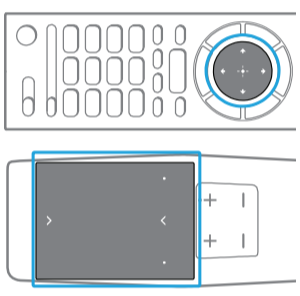
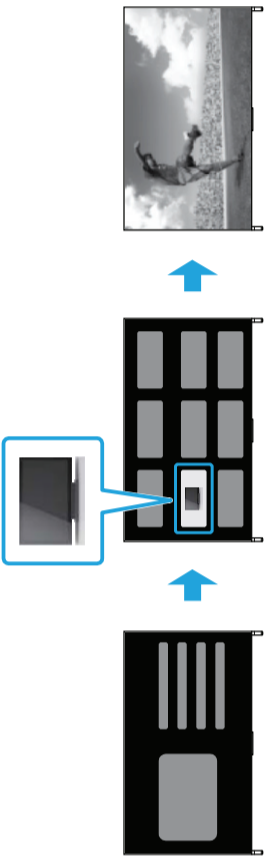
KD-55X9005C



1

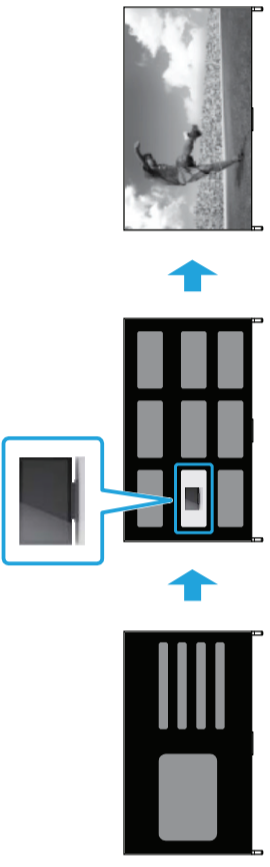
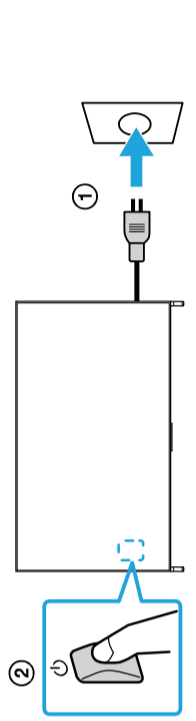
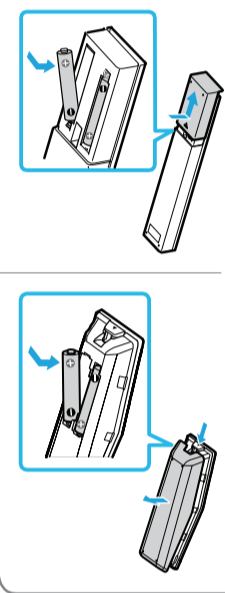


2

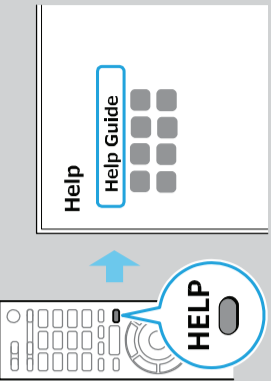


M

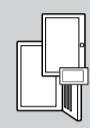
N



Manual përdorimi: Informacione sigurie, masa të kundëst, lidhje tjera, menjanimi i problemeve, specifikimet. Te gashme edhe në internet.



[http://rd1.sony.net/help/tv/caep1/h\\_eu/](http://rd1.sony.net/help/tv/caep1/h_eu/)



[http://rd1.sony.net/help/tv/caep2/h\\_eu/](http://rd1.sony.net/help/tv/caep2/h_eu/)

Udhëzues për rregullimin e TV pajisjes me Android I gashëm edhe në internet.

Kyeni TV pajisjen për të bërë rregullimin fillestar.

Vendosja Mos lidhni kordonin e rrymës bashkë me kordonet tjere.