

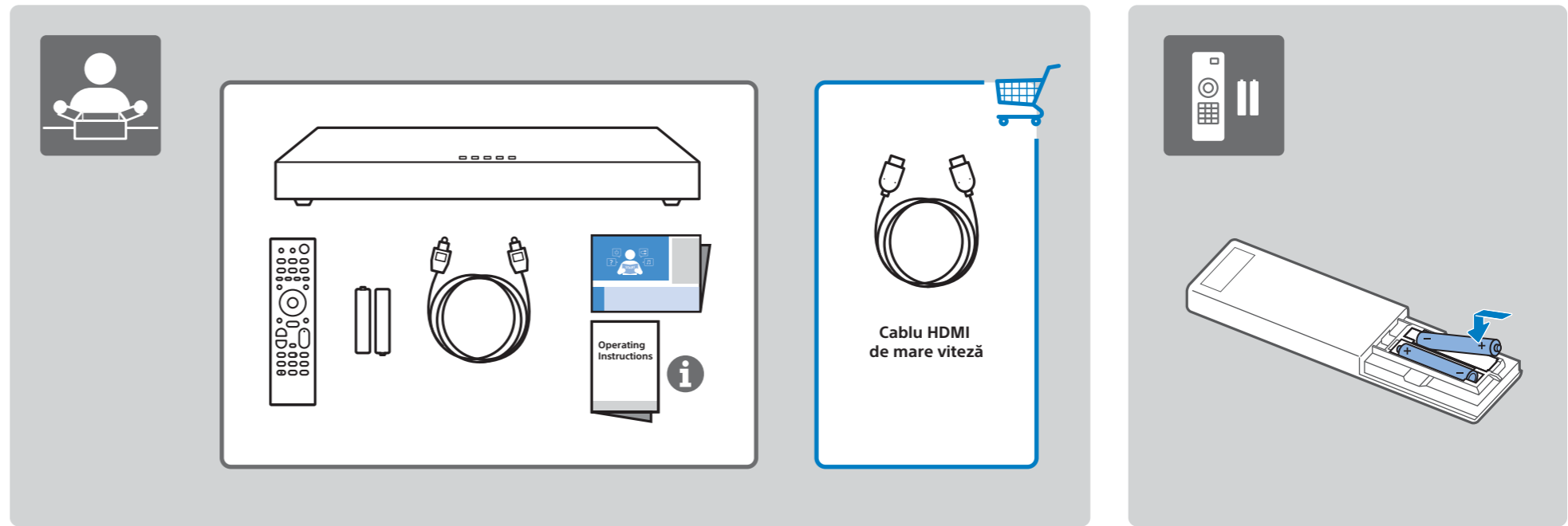
SONY



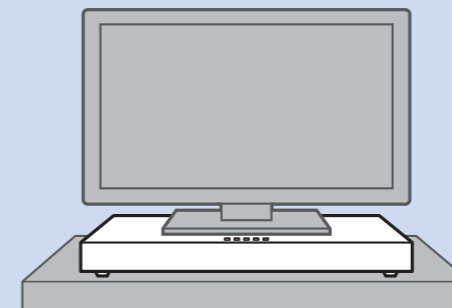
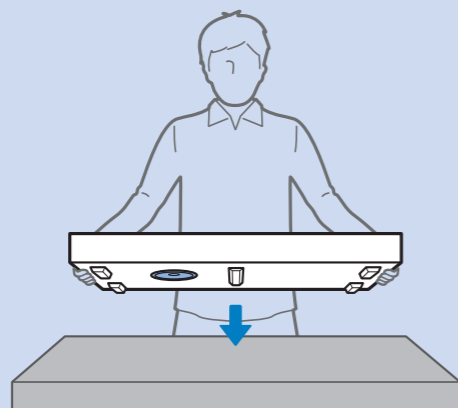
HT-XT2

©2016 Sony Corporation

4-585-709-22(1) (RO)

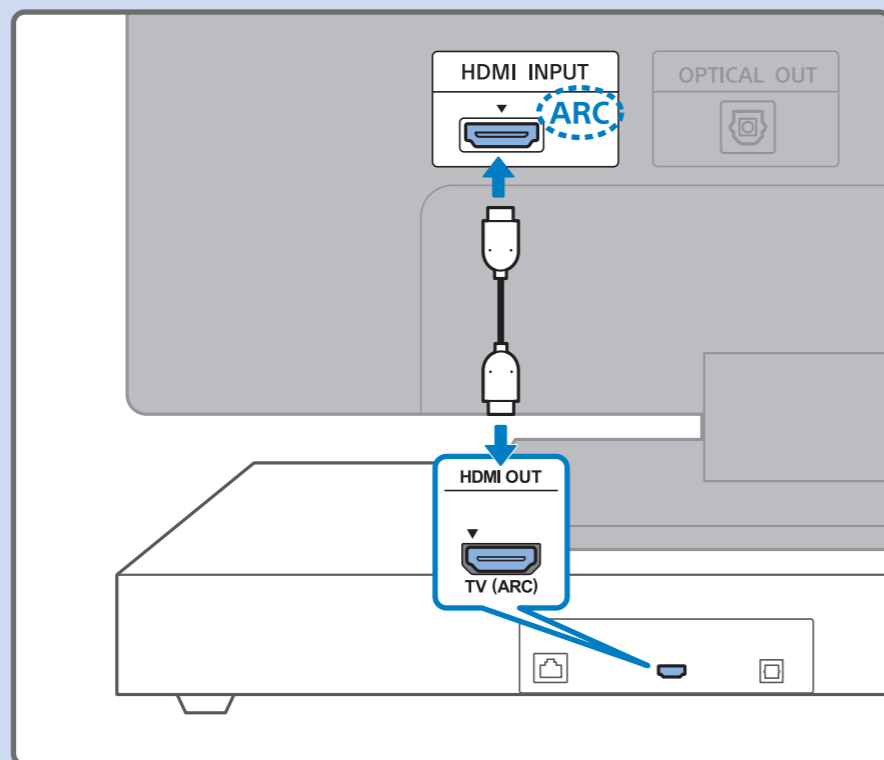


1



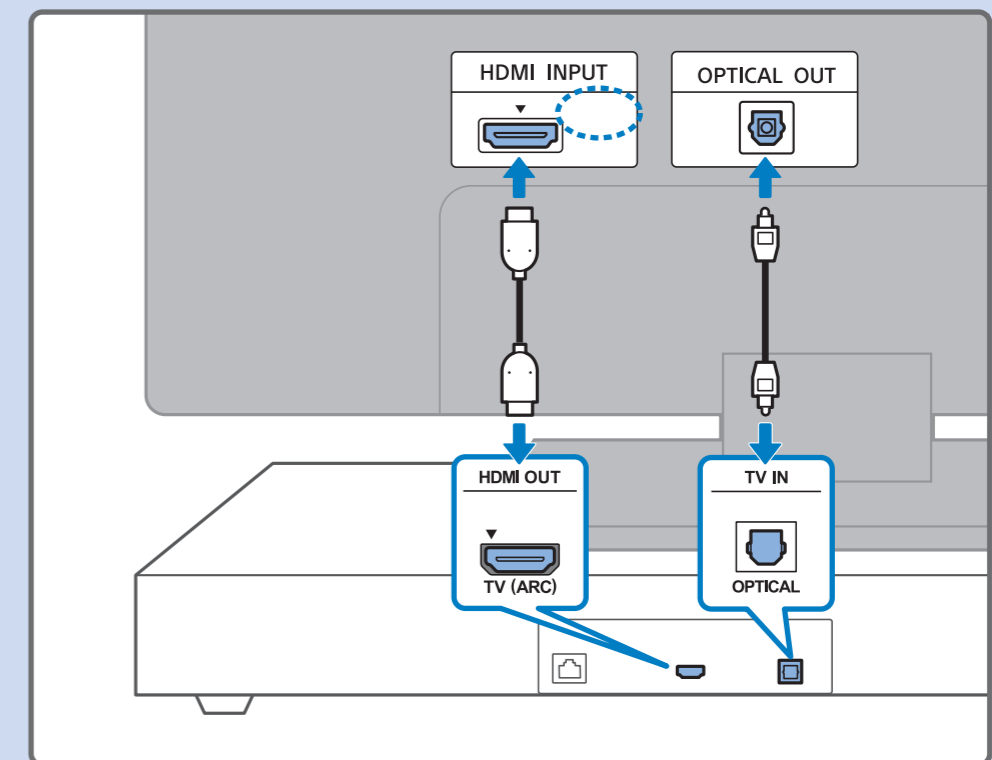
2

HDMI ARC

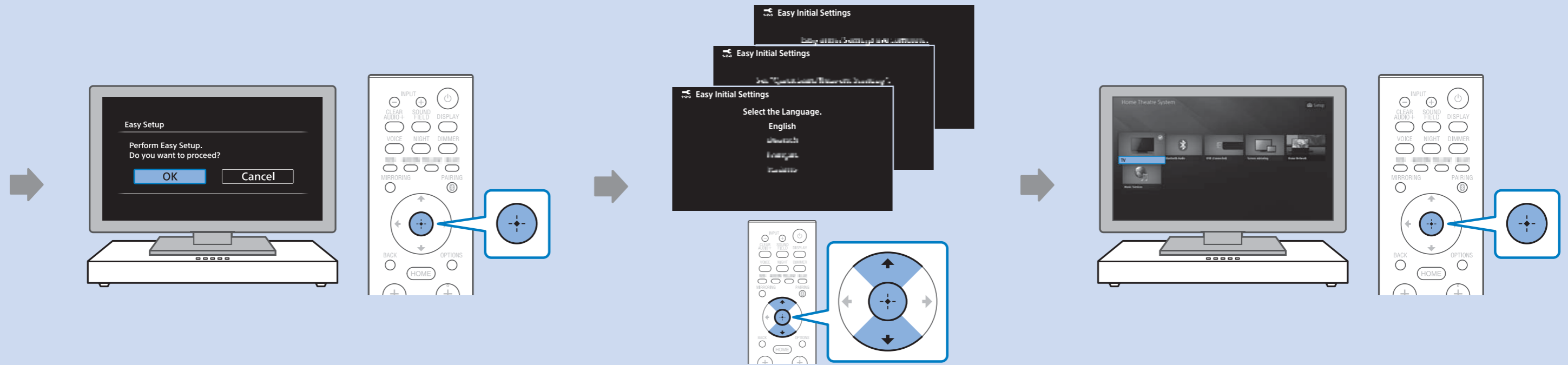
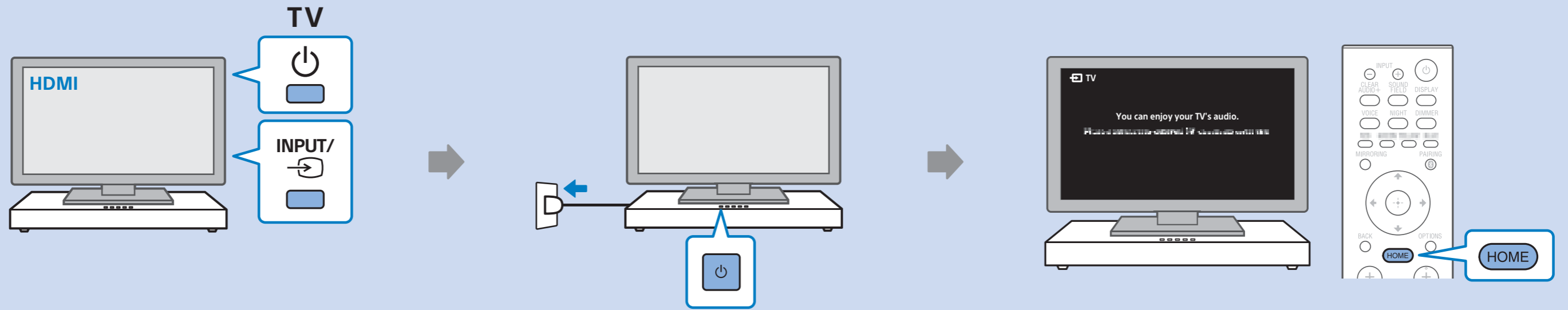


SAU

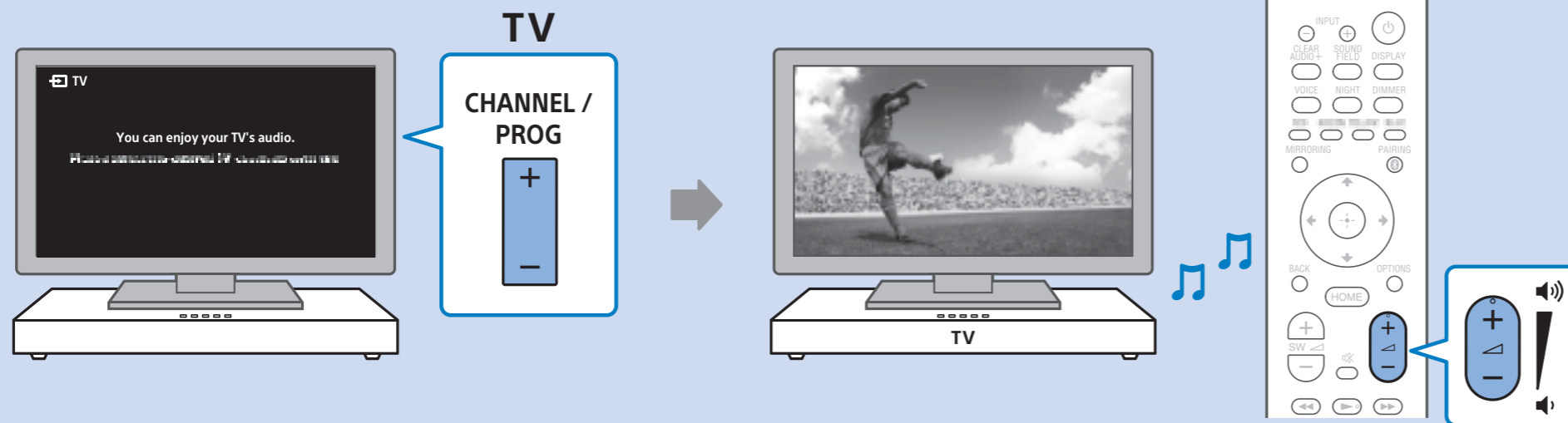
HDMI



3



4



SongPal Link

Wireless Multi-room

Operating Instructions

This block contains the "SongPal Link" logo, the "Wireless Multi-room" logo with an illustration of a multi-room audio system, a document icon labeled "Operating Instructions", and a QR code.