

About the software on your Sony VAIO desktop

PCV-RX2 series

The VAIO logo is rendered in a blue, stylized font. The 'V' is a thick, wavy line that curves down and then up. The 'A' is a solid blue circle. The 'I' is a thick vertical line with a small upward-pointing arrowhead at the top. The 'O' is a thick, solid blue circle.

Read this first

Notice

This product contains software owned by Sony and licensed by third parties. Use of such software is subject to the terms and conditions of license agreements enclosed with this product. Software specifications are subject to change without notice and may not necessarily be identical to current retail versions. Updates and additions to software may require an additional charge. Subscriptions to online service providers may require a fee and credit card information. Financial services may require prior arrangements with participating financial institutions.

© 2002 Sony Corporation. All rights reserved.

Reproduction in whole or in part without permission is prohibited.

End user software license agreement

This End User Software License Agreement (the **EULA**) is a legal agreement between you and Sony Corporation (hereinafter referred to as **Sony**), a corporation organized under Japanese Law, the manufacturer of your **Sony** computer system (the **SONY HARDWARE**). Please read this EULA carefully before installing or using the software distributed together with this EULA (the **SONY SOFTWARE**). By installing or using the **SONY SOFTWARE**, you agree to be bound by the terms of this EULA. You may use the **SONY SOFTWARE** only in connection with the use of the **SONY HARDWARE**. **SONY SOFTWARE** is licensed; not sold.

Notwithstanding the foregoing, software distributed together with separate End User Software License Agreement (the **Third Party EULA**), including but not limited to Windows[®] operating system provided by Microsoft Corporation, shall be covered by the Third Party EULA.

If you do not agree to the terms of this EULA, please return the **SONY SOFTWARE** together with the **SONY HARDWARE** to the place where you obtained it.

1. License. This **SONY SOFTWARE** and the related documentation are licensed to you by **Sony**. This EULA allows you to use the **SONY SOFTWARE** for your personal use for a single **SONY HARDWARE** outside a network and only to make one copy of the **SONY SOFTWARE** in machine-readable form for back-up purposes only.

2. Restrictions. The SONY SOFTWARE contains copyrighted material and other proprietary material. In order to protect them, and except as permitted by applicable law, you may not decompile, reverse engineer or disassemble the SONY SOFTWARE in whole or in part. Except for the transfer of the SONY SOFTWARE together with the SONY HARDWARE and prior agreement of the recipient to be bound by the terms and conditions of this EULA, you may not sell or rent the SONY SOFTWARE and its copy to any third party.

3. Limited Warranty. Sony warrants the media on which the SONY SOFTWARE is recorded to be free from physical defects for a period of ninety (90) days from the date of purchase as evidenced by a copy of the receipt. During the applicable warranty period, **Sony** will replace free of charge such media proved to be defective, provided they are returned properly packaged to the place where you obtained it, together with your name, address, and proof of date of purchase. **Sony** will have no responsibility to replace media damaged by accident, abuse, or misapplication. The above limited warranty replaces all other representations, conditions and warranties, whether express or implied, by statute or otherwise and **Sony** expressly disclaims all other warranties and all conditions including, but not limited to, the implied warranties and/or conditions of satisfactory quality and fitness for a particular purpose. The terms of this limited warranty do not affect or prejudice your statutory rights as an ultimate consumer, neither do they limit or exclude any liability for death or personal injury caused by the negligence of **Sony**.

4. Termination. This EULA is effective until terminated. You may terminate this EULA at any time by destroying the SONY SOFTWARE, related documentation, and all copies thereof. This EULA will terminate immediately without notice from Sony, if you fail to comply with any provision of this EULA. Upon termination you must destroy the SONY SOFTWARE, related documentation, and all copies thereof.

5. Governing Law. This EULA shall be governed by and construed in accordance with the laws of Japan.

Should you have any questions concerning this EULA or this limited warranty, please refer to the Customer Service Guide on how to contact VAIO-Link.



ENERGY STAR®

As an ENERGY STAR® Partner, **Sony** has determined that this product meets the ENERGY STAR® guidelines for energy efficiency. The **International ENERGY STAR® Office Equipment Program** is an international program that promotes energy saving through the use of computers and their office equipment. The program backs the development and dissemination of products with functions that effectively reduce energy consumption. It is an open system in which business proprietors can participate voluntarily. The targeted products are office equipment such as computers, displays, printers, facsimiles and copiers. Their standards and logos are uniform among participating nations.

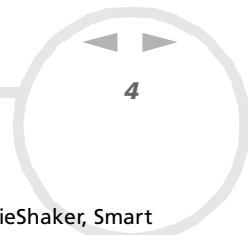
ENERGY STAR is a U.S. registered mark.



Environmental information



Halogenated flame retardant is not used in cabinets.
Cushion formed by corrugated board are used in packaging.



Trademarks

Sony, DVgate, i.LINK™ and the i.LINK™ logo, ImageStation, PictureGear, PictureToy, Media Bar DVD Player, MovieShaker, Smart Capture, UI Design Selector, VAIO Action Setup, VAIO System Information, VisualFlow, SonicStage, Memory Stick™ and the Memory Stick™ logo, VAIO and the VAIO logo are trademarks of Sony Corporation.

i.LINK™ is a trademark of Sony used only to designate that a product contains an IEEE1394 connection.

Microsoft®, Windows® and the Windows® logo, Windows® Media and Outlook® are trademarks or registered trademarks of U.S. Microsoft® Corporation in the U.S. and other countries.

Adobe®, Adobe® Acrobat® Reader™, Adobe® Premiere® and Adobe® Photoshop® Elements are trademarks of Adobe Systems Incorporated.

QuickTime and the QuickTime logo are trademarks used under license. QuickTime is registered in the U.S. and other countries.

RealPlayer® and RealJukebox® are trademarks or registered trademarks of RealNetworks, Inc. in the U.S. and other countries.

Symantec Norton Antivirus is a trademark of Symantec.

DVDit!™ is a trademark of Sonic Solutions.

All other names of systems, products and services are trademarks of their respective owners. In the manual, the ™ or ® marks are not specified.

Specifications are subject to change without notice.



Starting your VAIO for the first time

Registering your VAIO

It only takes a few moments to register your Sony VAIO computer.

By registering your computer, you can take advantage of Sony's commitment to quality customer support and receive the following benefits:


- ❑ **Club VAIO** – Online support, tutorials, tips and tricks, news, news forums, competitions, free downloads and software updates.
- ❑ **VAIO-Link** – If you are experiencing any problems with your computer, you can check the VAIO-Link website for a possible solution: <http://www.vaio-link.com>.
- ❑ **Guarantee** – Protect your investment. See the **Guarantee** sheet for the terms and conditions and refer to your **Customer Guide** for more information.

To register your Sony VAIO computer, proceed as follows:

- 1 Connect your phone line and set up a modem connection (see **Configuring your modem**).
- 2 Click the **VAIO Online Registration** icon on the desktop.
- 3 Select your language and click **Next**.
- 4 Select the **Register Now** option button and click **Next**.
You get to the website <https://registration.sonymstyle-europe.com/vaio/registration.asp>.
- 5 Fill in your first and last name, the serial number of your computer and the place where you live.
- 6 Click **Submit**.
Your VAIO is registered.

Discovering VAIO Remote Control

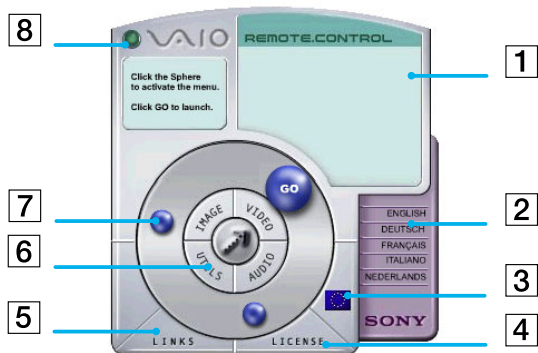
VAIO Remote Control is your gateway to the VAIO world. VAIO Remote Control is easy to use and incorporates everything you need to start using your VAIO computer. Launch software applications and go to Sony websites from here in an instant.

 By default, you can find VAIO Remote Control in the **Start** menu, after which you can copy it to your desktop for easy access.

The functionalities of the VAIO Remote Control application can only be used if you have administrator rights on your computer. Other users will be able to access the VAIO Remote Control screen, but cannot use it to launch other software applications.

Overview

Here are the features of the VAIO Remote Control:



1	Info Box	Contains a brief description of an item when you move the cursor over it.
2	Language options	Click to select your preferred language.
3	Language display	Click to display/hide the language list.
4	License	Click here to view the End User License Agreement in 13 languages.
5	Links	Reveals the links to useful Sony websites.
6	Central Remote Control buttons	Click an application area to reveal the software items. You can access Utilities, Video, Audio and Image software from here.
7	Steering wheel	The spheres in this area represent the applications and useful links.
8	Close	Closes the Remote Control window.

 You will need to configure your Internet connection to access the websites.



Launching software applications and websites

Follow this simple sequence to launch an application or a website:

- 1 Move the cursor over the application you want to use or the link you want to see.
The info box displays a description of the item.
- 2 Click the sphere to start the launch sequence.
The sphere moves closer to the info box and the word **GO** appears.
- 3 Click **GO** to launch.
For software applications, the program is launched in full-screen.
For links, Internet Explorer is opened and the Sony website is launched.



About the software on your computer

Your Sony computer is ready to help you work, play, learn, and communicate as soon as you turn it on. This section gives you an overview of what you can do with the software installed on your computer.

Sony software



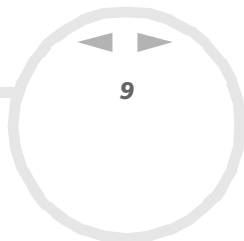
DVgate



Sony Electronics

DVgate is a kit of 3 complementary applications: DVgate Motion, DVgate Still, and DVgate Assemble. This collection makes it easy to select and edit digital video clips, then bring them together into a professional-looking home video. Use i.LINK™ to connect your digital video camera, and the computer operates as an editing desk that can capture, preview, cut and assemble your selection and save the sequences in AVI and MPEG2* formats. DVgate Still displays digital video images sent from a digital videocassette recorder or a digital video camera recorder (only possible if you have DV In/Out on your camera), and saves them as graphic files on your hard drive.

* available only on PCV-RX203



ImageStation (shortcut to website)

Sony Electronics

Your computer is installed with a shortcut to the ImageStation website. Sony ImageStation is an easy way to share your digital pictures and videos with family and friends. Use ImageStation with the PictureGear, SmartCapture and MovieShaker software to make the most of your images and movies. When you sign up as a Sony ImageStation member, you can store your pictures and even order prints. Go to the following website by clicking on the shortcut to join for FREE:

<http://www.imagestation-europe.com>



Media Bar DVD Player

Sony Electronics

Media Bar DVD Player is a command and control center designed to assist you in organizing and playing your entire collection of DVDs.



MovieShaker®

Sony Electronics

MovieShaker® creates personal movies - complete with transitions, special effects, background music, and text. All you do is import your clips, pick the tune you want and MovieShaker® does the rest. You can also choose to take control and produce your very own movie. You choose the exact clips order, special effects, and transitions. You can also import your own music and MovieShaker® will automatically match the length of the song to the length of your movie.



PictureGear

Sony Electronics

Create your own environment with the Digital Image Library (photos, backgrounds, wallpapers, slide shows, etc). PictureGear is your assistant for creating and implementing personal screen savers... You can even animate your preferred gif files with Gif Animation Tools, or play back movies in a variety of formats. You can also create albums from your favourite images and upload them to a Web page.



PictureToy

Sony Electronics

PictureToy is Sony's drawing application, using a highly accurate pen tool. As well as drawing from scratch, you can edit images using over 70 images. Adding spectacles and flowers to pictures is just as much fun as it sounds!



Smart Capture

Sony Electronics

Connect a digital camera to your computer to shoot still images and video clips, which you can view or send by e-mail. The Smart Capture Finder displays images from the camera and allows you to adjust the settings or create effects. Smart Capture enables you to capture images via i.LINK™ compatible devices or create a panorama picture using the panorama assist function.



SonicStage

Sony Electronics

SonicStage is software using the OpenMG technology, a copyright protection technology developed by Sony Corporation and designed to allow recording and playback of digital music data on a personal computer. Once the data is encrypted and recorded onto the hard disk, SonicStage technology allows it to be played back on the PC but prevents unauthorized distribution. The purpose of SonicStage technology is to create an environment in which larger quantities of high-quality music can be distributed without subsequent unauthorized distribution of the music files.

The SonicStage software encrypts and manages music files either downloaded to a personal computer by using the EMD services or adopted (or created) from your own CD or the Internet.



UI Design Selector

Sony Electronics

You can change the window design of the Sony software compatible with UI Design Selector.



VAIO Action Setup

Sony Electronics

VAIO Action Setup helps you manage application settings that control hardware events on your computer. For instance, this software enables you to start your favourite software with the shortcut keys (S Keys). It manages the settings for the internal timer, i.LINK™ interface and Memory Stick™.



VAIO System Information

Sony Electronics

Thanks to VAIO System Information (Start - VAIO - Assistance - VAIO System Information), you can always check the **product** (model name, serial number, BIOS version, OS version and OS serial number) and the **system information** (CPU, clock frequency, system memory and cache memory) of your computer.



VisualFlow

Sony Electronics

VisualFlow allows you to browse interactively through the contents of your Memory Sticks™ (optional), your hard drive, or any other drive on your computer. VisualFlow can display Memory Stick™ files in a variety of ways, and allows you to play / display still images, movies or sound files within VisualFlow or with other software.



Product Recovery CD-ROMs

Sony Corporation

The Product Recovery CD-ROMs allow you to reinstall the system, the software shipped with your computer and the bundled device drivers if they are corrupted or accidentally erased. Reinstalling an individual device driver may correct a problem you are experiencing with your computer, without you having to recover the entire system.

! You can only use the Recovery CD-ROMs on the Sony computer you purchased, and not on any other Sony PC or other manufacturer's PC.

Operating system and other pre-installed software



Windows® XP Home Edition

Microsoft Corporation

Microsoft® Windows® XP Home Edition allows you to enjoy a new level of reliability that helps your computer stay up and running. If anything does go wrong, you can quickly roll back to the state your system was in when all was well. The new, simpler visual design lets you use your computer the way you want. If you share a computer with other users, you can each enjoy your own personal preferences because this Windows® operating system enables your computer to handle multiple activities at the same time. Windows® XP Home Edition automatically shields your computer from unauthorized access when you are on the Internet.

For questions and technical assistance, go online to:

<http://support.microsoft.com/directory>



Internet Explorer 6.0

Microsoft Corporation

Internet Explorer is the Microsoft Internet browser allowing you to surf the World Wide Web. The Setup Wizard configures your computer to connect automatically to your service provider. A full e-mail package enables you to send and receive mail - including attached files - across the Internet. NetMeeting, Outlook Express and Microsoft Chat are just some of the components bundled with Internet Explorer 6.0. Internet Explorer 6.0 also includes 128-bit encryption, the highest possible level of protection for all your Internet communications, including credit card use and financial transactions. A complete online tutorial helps new users become comfortable using the Internet.

For questions and technical assistance, go online to:

<http://support.microsoft.com/directory>



Adobe® Acrobat® Reader™ 5.0

Adobe Systems Incorporated

Acrobat® Reader™ software allows you to view, navigate, and print electronic documents in Adobe Portable Document Format (PDF), an open file format that is intended to preserve the conformity of documents created on all major computer platforms. Once Acrobat® Reader™ is installed, you can open and view PDF files from within your Web browser by clicking a PDF file embedded in an HTML file. You quickly see the first page while the rest of the document is being downloaded.

For questions and technical assistance, go online to:

<http://www.adobe.com>



Adobe® Premiere® LE 6.0

Adobe Systems Incorporated

Complementary with DVgate Motion, Adobe® Premiere®* lets you capture, record, create and edit movies with video, sound, animations, photographs, drawings, text and other material.

This stunningly simple and powerful professional video-editing tool comfortably closes the DV to Web gap. Different tools, including various effects and transitions, help you to prepare your images for editing on tape or CD-ROM.

Adobe® Premiere® combines professional video editing capabilities and high quality output in a product that's easy to use and versatile.

<http://www.adobe.com>

* not available on PCV-RX201



Adobe® PhotoShop® Elements

Adobe Systems Incorporated

Adobe® PhotoShop® Elements software introduces the next generation of image editing with powerful new features that offer something for every user. Delivering the broadest and most productive toolset available, PhotoShop® helps you explore your creativity, work at peak efficiency, and achieve the highest quality results across all media.

For questions and technical assistance, go online to:

<http://www.adobe.com>



Sonic Solutions

DVDit!™* enables you to create interactive Video content on your PC and publish it on DVD. You start by importing your edited MPEG-1 and MPEG-2 video and audio files (WAV and MPEG-1 layer 2 files only), image files, and other multimedia. Then you can import backgrounds and buttons, text and effects, to create your own DVD menus. Link your video and audio content to create interactive presentations, training applications or virtually any other interactive video content. When you're finished, DVDit!™ automatically converts your video sources into the correct formats, and records your content directly to DVD-R or CD-R.

For questions and technical assistance, go online to:

<http://dvdit.com/Support/index.html>

* available only on PCV-RX203



QuickTime 5.0

Apple

QuickTime is the Apple technology that makes video, sound, music, 3D and virtual reality come alive for your Internet browser and Windows.

For further information, see the website at:

<http://www.apple.com/quicktime>



Real Entertainment Center

Real Entertainment Center contains two software programs: RealPlayer and RealJukebox.

RealNetworks - RealPlayer

RealPlayer is the RealNetworks video and audio player, which lets you access 2,500 radio stations featuring music, news and sports.

For further information, see the website at:

<http://www.real.com>

RealNetworks - RealJukebox

RealJukebox is your personal music management system. RealJukebox lets you build, manage, and play your digital music library on your personal computer.

For further information, see the website at:

<http://www.real.com>



RecordNow DX™

VERITAS

RecordNow DX™* provides high performance CD or DVD recording for enthusiasts and professionals wanting control in their CD or DVD writing experience. Whether you're a first time user or an expert on recording, RecordNow DX™ gives you the audio, CD, DVD, video, and MP3 recording tools you need. RecordNow DX™ provides predictable results creating reliable music and data CD or DVD.

<http://support.veritas.com>

* Available only on PCV-RX203



Symantec Norton AntiVirus

Symantec

Your computer comes preinstalled with the Norton AntiVirus setup file, from which you can install the software yourself. With Norton AntiVirus, you can scan files, folders, or entire drives for viruses, and quarantine infected files for submission to the Symantec AntiVirus Research Center (SARC). Files submitted to SARC are analyzed and the results are reported automatically within seven days. When you configure Norton AntiVirus adequately, your computer is safe. Norton AntiVirus can automatically check boot records for viruses at system startup, check programs for viruses at the time you use them, scan all local hard drives for viruses once per week, and monitor your computer for any activity that might indicate the work of a virus in action. It can also scan files you download from the Internet and check floppy disks for boot viruses when you use them.

You must launch the Norton AntiVirus installation, and you will then be prompted to update the virus definitions. This is normal as new viruses have come out since your VAIO left the factory.

For more information, see the online help files and the website at:

<http://www.symantec.com/techsupp>



VAIO Web Phone

CallServe Communications Ltd.

Once you have purchased the USB telephone, this Internet Telephone enables you to make telephone calls from your PC via the Internet to any other phone. You can make international calls at significantly lower prices and make phone calls and surf the web at the same time - on just one phone line.

<http://www.callserve.com/EN/help/index.asp>

Using Video software

The following video software applications are installed on your VAIO:

- ❑ DVGate ([page 19](#))
- ❑ MovieShaker ([page 34](#))
- ❑ Smart Capture ([page 40](#))

PCV-RX203 users: Please be aware that the features described in this section may differ from the version installed on your computer. Please refer to the online Help of each application for more details.


Using DVgate

DVgate is a software application that enables you to capture and then edit images taken with digital video devices (DV devices), such as digital video camera recorders, on your personal computer. It also gives you the ability to output the edited material for recording on a DV device.

With DVgate, you can easily perform image editing with your computer and a DV device.

DVgate consists of 3 applications:

- ❑ **DVgate Motion;**
- ❑ **DVgate Still;**
- ❑ **DVgate Assemble.**

 Depending on the computer settings, frames may be lost during video capture and frame duplication when recording edited video. Please make sure you configure your computer according to the recommended settings to prevent this from happening. To configure your computer to use DVgate, refer to the Online help of DVgate.

Using DVgate Motion

With DVgate Motion you can capture video and record edited videos on a DV device.

❑ **Capturing video:**

You can **automatically** or **manually** capture any scene or portion of the images recorded on a DV device, such as a digital video camera recorder. What is more, you can specify the exact scenes that you want to capture while watching the tape playback on the monitor. You can then choose to save the selected scenes as separate files or as one file.

❑ **Recording edited video on a DV device**

You can record the edited video on tape using a DV device, such as a digital video camera recorder*, connected to the computer. With DVgate, you are not limited to recording single clips, but you can record a series of clips on the DV device at one time.

To launch DVgate Motion, proceed as follows:

- 1 Connect the camera to the computer with the i.LINK™ cable and turn on the camera.
- 2 Click **Start, All Programs, DVgate, DVgate Motion. DVgate Motion** and the **Monitor** windows appear.


* The digital video camera recorder must have a DV-IN connector.

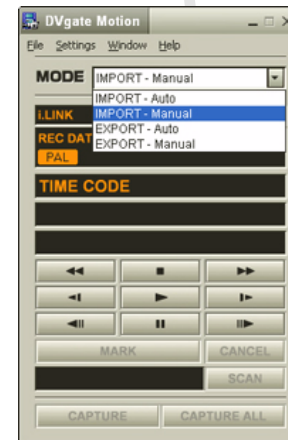
Capturing video

You can automatically or manually import videos onto your computer.

To automatically import videos onto your computer, proceed as follows:

- 1 Launch **DVgate Motion**.
- 2 Click the **down** arrow and select **Import-Auto** from the **Mode** drop-down list. Use the DVgate camera controls buttons to play, rewind or fast forward the tape to the selected time code to begin capturing.

- 3 Press **Play** to start the video.
The video begins to play in the **Monitor** window.
 - 4 Click **Mark** to mark the beginning of the first segment.
The first frame of the segment to be captured, is displayed in the **In/Out list** window.
Click **Mark** again to mark the end of the segment to capture.
The last frame of the segment to be captured, is displayed in the **In/Out list** window.
Continue to mark as many segments as you want.
 - 5 Click **Capture** to import the selected video segment or click **Capture All** to import them all at once.
The **Save as a file** window appears.
 - 6 Select the location to save the file.
 - 7 Click the **Save** button.
DVgate captures the segments.
The **Capturing complete** message appears.
 - 8 Click **OK** in the **DVgate Motion** window to finish.
Information about the capturing process is displayed in the **Report** window.
 - 9 Click **OK**.
 - 10 Exit DVgate Motion.
The **DVmotion2** window appears on the screen.
You can then save the **In/Out list**, which allows you to capture the same video sequences later on, or change the In/Out settings.
-  Make sure that the camera is in Video Tape Recorder mode (VTR) when capturing or playing back video from or to a tape.
If you want to manually import video onto your computer, refer to the DVgate online help file.



Recording edited videos on a DV device

To record edited videos on a DV device, proceed as follows:

- 1 Adjust the recording correction values.
- 2 Add files to the Record List.
- 3 Record the video either remotely or manually on the DV device.

Adjusting the recording correction values

To ensure accuracy in the recording, you can specify recording correction values. Adjustment of the recording correction values is especially important when performing splice recording. You can choose to specify the values yourself or to have them automatically adjusted by using the automatic calibration feature. The values generated by the automatic calibration feature are usually correct.

To automatically adjust the recording correction values, proceed as follows:

- 1 Launch DVgate Motion.
- 2 Click the **down** arrow and select **Export - Auto** from the **Mode** drop-down list.
- 3 Select **Adjust on Recording...** from the **Settings** menu.
The **Adjust on Recording** dialog box appears.
- 4 Click the **AutoAdjust** button.
DVgate Motion activates the connected DV device and automatically finds the adjustment values.
- 5 Click **OK**.

 To manually adjust the recording correction values, refer to the DVgate online help file.

Adding files to the Record List

To add files to the Record List, proceed as follows:

- 1 Launch **DVgate Motion**.


2 Click **Add** in the **DVgate Motion – AVI file list**.

The **Add** dialog box appears.

3 Select a file and click **Open**.

The specified file is added and the serial number, first and last images, time code, file length and file name are displayed.

★ DVgate Motion adds all serial numbered files with the same name if you select **Add all divided files saved with the same name**. Serial numbered files are created when you specify to save files as multiple files in DVgate Motion and DVgate Assemble.

 All newly added files are appended to the end of the list.

You can drag multiple files at one time; however, the order in which they are added is unpredictable.

You can record AVI files with different sound modes on a DV device, but about one second of no sound (depending on the DV device) may occur at the point where the sound modes change.

You can only add AVI files using DV Codec as video compression; MPEG files are not supported.

When recording a video sequence, make sure that all images are saved in the same mode. Recording in different modes might cause sound or image distortions during playback. After adding the files you want to the Record List, you can still change the order of the files, add or delete files.

After adding the files to the Record List, you can still change the order of the files, add or delete files.

To change the order of the files in the Record List, proceed as follows:

- 1 Click the file you want to move while holding down the mouse button.
- 2 Drag the file to the appropriate position and then release the mouse button.

To remove a file from the Record List, proceed as follows:

- 1 Click the file you want to remove.
- 2 Click **Delete**.
The removed file is filled by the subsequent file and the files are renumbered.
Click **Delete All** to remove all files.

 You can select multiple AVI or still picture files from the Record List by clicking them while holding down the <Shift> or <Ctrl> key.


When you move multiple files, they are all moved together.

You can undo changes by choosing **Undo** from the **Edit** menu immediately after inserting, moving or deleting (a) file(s).

You can save a **Record List** for future use. Record List files can only be used in DVgate Motion.

To preview a clip, proceed as follows:

- 1 Select the file you want to preview in the **DVgate Motion – AVI file list** window.
- 2 Click **Preview**.
The **Monitor** window and the **Preview** window appear.
The **Monitor** window shows the first frame of the file.
Click on the **Previous File** button or on the **Next File** button to select the file you want to preview.
Click **Preview All** to preview all the files shown in the list.


 **Previous File** and **Next File** are buttons for moving the preview from one selected file to another. They are not designed for navigation purposes within the list. Consequently, you cannot click on them when only one file is selected. When you select only one file, **Previous File** and **Next File** do not function.

Recording on the DV device

You can automatically or manually export videos from your computer to a DV device.

To automatically export videos from your computer to a DV device, proceed as follows:

- 1 Connect the camera to the computer with the i.LINK™ cable and turn on the camera.
 - 2 Launch **DVgate Motion**.
 - 3 Click the **down** arrow and select **Export-Auto** from the **Mode** drop-down list.
 - 4 Click **Record** or **Record All**.
The **Output** dialog box appears.
 - 5 Select the **Add blank image** option button.
 - You can add blank frame(s) during recording if you select the **Append** option button in the **Output** dialog box.
Blank frame(s) can be placed in the following locations:
Head: A blank image is placed before the start of the video sequence during recording.
Tail: A blank image is placed after the end of the video sequence during recording.
Both: Blank images are placed before the start and after the end of the video sequence during recording.
 - You can specify the length of a blank image by entering the number of frames in the **Length** box in the **Output** dialog box.
 - 6 Click **OK**.
The **Output** dialog box closes and recording starts.
Video sequences are recorded on the DV device in the order in which they are arranged in the **Record List**.
- ★ Clicking **Record All** will send all the video files shown in the **Record List** to the connected device. Clicking **Record** will send only the video files selected from the **Record List** to the connected device.

 Even if you specify not to add blank frames, several blank frames are always placed at the end of the recorded segment regardless of the settings. This is to prevent image noise from being recorded when recording stops.

Do not quit or log off from Windows[®] while recording. Otherwise, recording will fail.

Disable the screen saver in Windows[®].

Do not start other applications or move any active window while recording.

Recording from the very beginning of the tape may not be successful if you record by controlling the video device through DVgate Motion.

Do not turn the power switch on the digital video camera recorder to **Camera** or turn it off while DVgate Motion is recording. Never switch the input sources when recording on a digital videocassette recorder as this might prevent recording.

If you want to export manually videos from your computer to a DV device, refer to the DVgate online help file.

Using DVgate Still

DVgate Still is an application that displays digital video images sent from DV devices such as a digital videocassette recorder or a digital video camera recorder and that captures them as still pictures.

The following functions are featured:

- Control the connected DV device and display a video image on the screen of your VAIO.
- Capture 30 frames of still pictures in total with respectively 15 frames in the forward and backward directions.
- Capture only one frame of a still picture.
- Save a captured still picture in BMP, JPEG, GIF or DVF format.
- Save a captured still picture in the **PictureGear*** folder or copy it to another application via the clipboard.

* To be able to save in the **PictureGear** folder, launch **PictureGear**. Click the **Outer devices** option. In the list that appears, click **Capture** and then **DVgate Still**.


 The sound recorded with the image, is not played.

Capturing pictures

There are two capture modes in DVgate Still: the **Continuous Capture** mode and the **Single Frame Capture** mode.

□ **Continuous Capture mode:**

If you capture pictures during **Play** mode, you can capture 30 frames of still pictures in total with respectively 15 frames in the forward and backward directions. All still pictures already captured, are lost. If you capture during **Pause** mode, you can capture only one frame of a still picture.

 Immediately after you capture during **Play** mode in **Continuous Capture** mode, the DV device pauses.

□ **Single Frame Capture mode:**

You can capture one frame of a still picture. The captured result is the same even if you capture during **Play** or **Pause** mode.


 Capturing 30 frames in **Continuous Capture** mode replaces all 30 frames. Capturing only one frame overwrites the first frame of the still picture, capturing the next frame overwrites the second frame, and so on.

To toggle between **Continuous Capture** mode and **Single Frame Capture** mode, proceed as follows:

- 1 Click **Settings** in the DVgate Still window.
- 2 Choose **Capture...**
The **Capture Settings** window appears.
- 3 Select the **Capture frames continuously** option button to capture in **Continuous Capture** mode.
Deselect the **Capture frames continuously** option button to capture in **Single Frame Capture** mode.

To capture pictures, proceed as follows:

- 1 Connect the DV device to your computer.
- 2 Launch **DVgate Still (Start/All Programs/DVgate/DVgate Still)**.
The **DVgate Still** window appears.

- 3 Set the DV device to the **Play** or **Pause** mode.
The video image appears in the **Monitor** window.
 - 4 Click the **Capture** button.
The video image in the **Monitor** window is being captured.
-  Dragging the slider in the **Capture** window to the left or right lets you display the still picture before or after the current one.
- ! If you exit DVgate Still without saving the captured still picture, it is cleared.
 - ! Even if you attempt to capture continuous pictures, you may not be able to capture some frames. In this case, exit all applications other than DVgate Still and then retry to capture them.



Saving the captured pictures

You can save the still pictures displayed in the **DVgate Still - Still** window in either one of the following formats: BMP, JPG, GIF or DVF.

To save the captured pictures, proceed as follows:

- 1 Launch **DVgate Still** and capture images.
- 2 In the **DVgate Still - Still** window, select a still picture you want to save.
- 3 Click the **Save** button.
The **Save As** dialog box appears.
Use the **Location to Save** drop-down list to select a folder.
Select a file format from the **File Format** drop-down list.
- 4 Click **Save**.
The captured picture is saved.

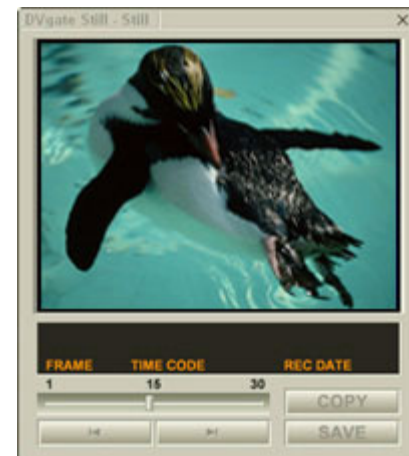
Using DVgate Assemble

DVgate Assemble enables you to edit video files and still image files captured with DVgate Motion and DVgate Still. Afterwards you can splice them together to form one single file. You can save the resulting spliced video sequences as AVI, MPEG1, or MPEG2* format files.

To launch DVgate Assemble, proceed as follows:

- 1 Click **Start**.
- 2 Point to **All Programs, DVgate** and then to **DVgate Assemble**.
The **DVgate Assemble** main window appears.

* On model PCV-RX203 only.




Creating an Assemble List

You can create an **Assemble List** with files you want to splice together. Afterwards you can always edit the Assemble List by changing the order of the files and adding or deleting files.

To add files to an Assemble List, proceed as follows:

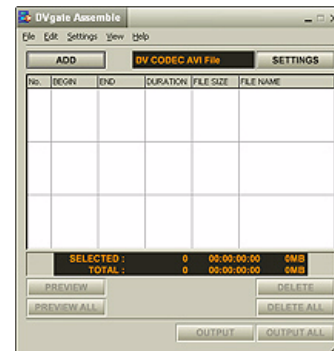
- 1 Launch **DVgate Assemble**.
- 2 Click the **Add** button.
The **Add** dialog box appears.
- 3 Choose **AVI file** in the **Files of type** drop-down box.
If you select **Add all divided files saved with the same name**, DVgate Assemble will add all serial numbered files with the same name to the list. Serial numbered files are files that are created when DVgate Motion saves files that are split and applies consecutive numbers to them. The numbers of the split files have 4 digits and increase one unit at a time starting with 0001.
- 4 Select a file and click **Open**.

 Imported files are added to the end of the Assemble List.

You can only add video files of the AVI (DV CODEC) format, and still image files of the BMP, JPEG, and GIF formats.

When you add a still image file (BMP, JPEG, or GIF), the number of frames, converted size, and size conversion mode are shown.

You can save an Assemble List for future use. Assemble List files can only be used in DVgate Assemble.



Editing AVI files

You can edit the AVI files in the Assemble List for the exact scenes you want to use. For example, there is no need to recapture files even if you only want to use one particular scene from a longer video sequence originally captured with DVgate Motion. Note that the process of removing the exact scene is only enabled when one AVI file is selected from the Assemble List. However, this command is disabled when more than one file are selected.

To edit the AVI files in the Assemble List for the exact scenes you want to use, proceed as follows:

- 1 Launch **DVgate Assemble**.
- 2 Select the AVI file you want to edit in the **Assemble List**.
- 3 Choose **Edit a clip...** from the **Edit** menu.
The **DVgate Assemble - Clip** dialog box appears.
- 4 Click the **Preview** button.
The video sequence of the selected file is played back.
You can move the playback position to the **Begin** point or the **End** point by clicking the **Begin** or **End** point of the image.
Click the **Begin** button when you see the scene to be used as the **Begin** point.
The **Begin** point image and the time code appear in the lower part of the dialog box.
Click the **End** button when you see the scene to be used as the **End** point.
The **End** point image and the time code appear in the lower part of the dialog box.
- 5 Click **OK**.
The AVI file is edited.

Combining still images with video images


To combine still images with video images, proceed as follows:

- 1 Launch **DVgate Assemble**.
- 2 Select the still image you want to insert from the **Assemble List**.
- 3 Choose **Edit a clip...** from the **Edit** menu in the main window.
The **DVgate Assemble - Clip** dialog box appears.
- 4 Enter the insertion time in seconds or frames.
- 5 Turn the **Wide TV mode** on or off.
- 6 Select the screen size.
- 7 Adjust the height and width of still images when they are output:
 - Full size:** Enlarges the screen size to the full monitor size. The aspect ratio may change with this selection.
 - Original Size:** Retains the original size of the image, without reduction or enlargement.
 - Full size using aspect ratio as saved:** Enlarges the screen size to the maximum without changing the aspect ratio.
- 8 Click **OK**.
The still and video images are combined.

Saving the edited video

To save an edited video sequence, proceed as follows:

- 1 Click the **Output** or the **Output All** button.
The **Save As** dialog box appears.
Information on the output file and the amount of free disk space is shown in the lower part of the **Save As** dialog box.
- 2 Select the location where you want to save the file and type the name of the file in the **File name** text box.
- 3 Click **Save**.
The **Outputting as an AVI file** dialog box appears and splicing begins.
The **DVassemble** window appears and displays the **Exporting/Save to an AVI file complete** message.
The set time and the size that the file is split into are displayed when outputting an AVI file.
- 4 Click **OK**.
The edited video is saved.

 When you click the **Output** button, only the files on the Assemble List that have been selected, are connected and output as a file. Clicking **Output All** means that all the files on the Assemble List are connected and output.

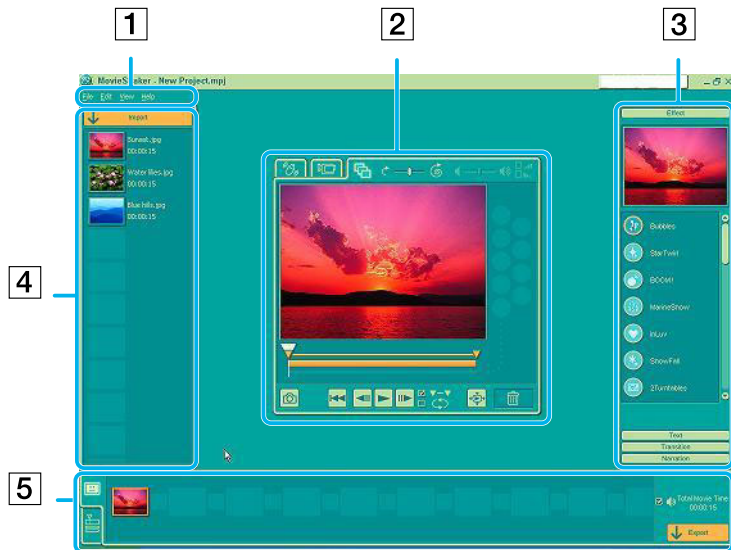
The file name is the name that was entered in the **Save As** dialog box. A 4-digit serial number is attached to the file name, e.g., test001-0001.avi, then test001-0002.avi, test001-0003.avi.

Using MovieShaker

MovieShaker can be used to create fun and innovative movies without any knowledge of film editing. In a few steps, motion pictures can be combined with special effects, still images (pictures), and music files and then saved in a format most computers can play.

To open MovieShaker, proceed as follows:

- 1 Click the **Start** button on the **Windows®** taskbar.
- 2 Point to **All Programs** and then **MovieShaker**.
- 3 Click **MovieShaker**.




1.	Menu bar	Shows MovieShaker menus.
2.	Monitor panel	<p>Contains the Shake, Capture, and Edit tray. Select a tray by clicking the Shake, Capture, or Edit tab.</p> <p>The Shake tray is for creating a scene of approximately 30 seconds long including background music, using clips on the Clip tray at random.</p> <p>The Capture tray is provided for capturing images directly from the DV device or MICROMV device connected to your computer, and importing them into the Clip tray. The monitor displays the images recorded on the videotapes of the DV device or MICROMV device.</p> <p>The Edit tray is for processing scenes. Click a scene on the Product tray, then it is displayed on the Edit tray. You can add an effect to the scene by dragging the effect from the Effect tray and/or the Text tray and dropping it on the Edit tray.</p>
3.	Tool panel	<p>In the Tool panel, you will find the Effect, Text, Transition, Narration and Index tray. Select a tray by clicking the Effect, Text, Transition, or Narration button. Only when a MICROMV device has been connected to your computer and MICROMV Device has been selected from the Device menu, the Index tray appears while the Capture tray is displayed on the monitor panel.</p> <p>The Effect tray contains various effects to be applied to a scene.</p> <p>The Text tray provides a tool for creating a text effect to be applied to a scene.</p> <p>The Transition tray contains various transition effects to be inserted between scenes.</p> <p>The Narration tray provides a tool for recording narration to be inserted into a movie.</p> <p>The Index tray provides a tool for capturing images from a MICROMV device and imports them into the Clip tray.</p>


4.	Clip tray	The Clip tray is provided for placing clips to be processed with MovieShaker. It can contain a movie file, still image and/or sound files.
5.	Product tray	The Product tray is where you arrange clips to make a movie. In the Product tray, you will find the Storyboard Display and the Timeline Display . On the Storyboard , you can easily arrange scenes and transitions. On the Timeline , you can arrange scenes, transitions, background music, and narration, and make fine adjustments to the starting/ending points and duration of scenes, transitions, background music, and narration.


Importing images and sound clips

Before you can create a movie, you need to import the images and sound clips you want to use in your movie.

To import images and sound clips, proceed as follows:

- 1 Click the **File import** button .
The **Import** dialog box appears.
- 2 Select the file you want to add.
- 3 Click **Open**.
The file is added to the **Clip tray**.




 Importing files over 75 seconds in length may cause MovieShaker to stop responding.

To remove a clip from the Clip tray, drag it from the Clip tray and drop it on the Trash icon . This only removes the clip from the tray, the original file is not deleted.

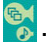

Creating a movie

After adding clip(s) to the **Clip tray**, you can create a short movie using the **Shaker** feature. Shaker randomly selects clips from the **Clip tray** to create a 30-second scene.

To create a movie, proceed as follows:

- 1 Click the **Shake** tab .
 - 2 Select a mood by clicking a face in the **Shaker tray** .
 - 3 Click the **Shake** button .
- A thirty-second scene is automatically generated and saved to the **Product tray**.

To preview the created movie, proceed as follows:

- 1 Double-click the scene in the **Product tray** .
- 2 Press **Play** .

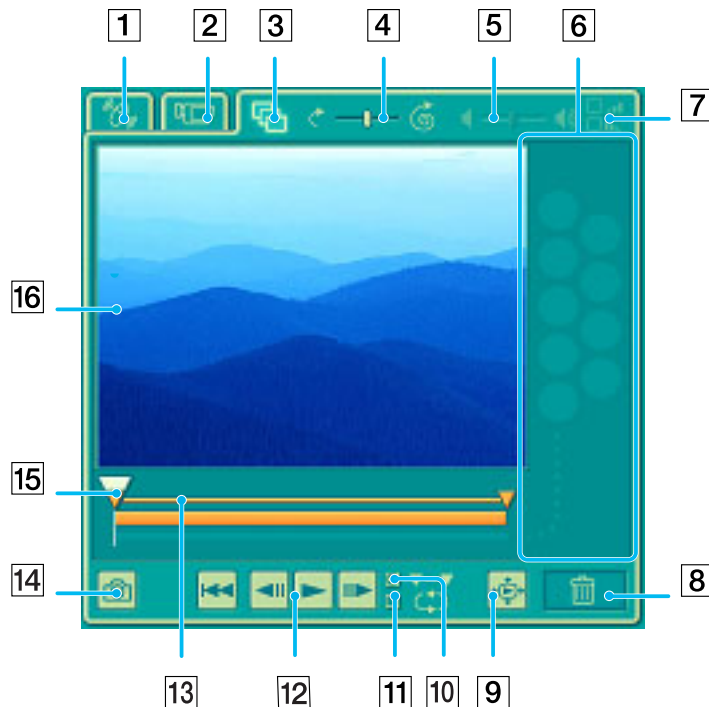
 Scenes created with Shaker begin with a black frame. After processing, they are placed in the first available slot on the Product tray.

Limit the number of scenes in the Product tray to 5 or less.

MovieShaker may stop responding if there are too many scenes in the Product tray.

Editing clips and scenes

You can edit your movie by adding effects and text, adjusting the colour and contrast, and modifying the length of the clip.



1.	Shake tab
2.	Capture tab
3.	Edit tab
4.	Speed control slider
5.	Volume control slider
6.	Effect palette
7.	Fade-in, fade-out
8.	Trash
9.	Full-screen preview button
10.	Play trimming range
11.	Repeat-play
12.	Play control buttons
13.	Trimming range
14.	Save as still image button
15.	Time adjustment
16.	Monitor

To edit clips and scenes, proceed as follows:

- 1 Double-click the clip in the **Clip tray** to move it to the **Monitor Panel**.
- 2 Select the **Effect** tab from the **Tool Panel**.
- 3 Drag and drop the effect you want to add from the **Effect tray** to the **Edit tray monitor**.


 To preview an effect, click the effect in the **Effect tray** in the **Working Panel** monitor.

For instructions on adjusting effect duration and replaying clips or scenes, consult the online Help-files.

Saving a movie

You can save or export your final movie products. You can preview and check them before saving them. Your final movie products can be saved as files, exported to a DV device/MICROMV device, or uploaded to ImageStation.

To save your movie, proceed as follows:

- 1 Click the **Export** button .
The **Export** dialog box appears.
- 2 Select the format in which you want the document to be saved.
- 3 Click **Next**.
- 4 Select the folder in which you want to save the file.
- 5 Name the file.
- 6 Click **Save**.
Your movie is saved.

 Exporting movies may take a long time to complete. Saving movies with DV (Digital Video) will provide better quality than Quick-Save, but will take longer.

MovieShaker can play AVI files up to 65 MB in size.

For DV playback and smooth video playback, the following resolution/refresh rates are recommended: 1024x768/75 Hz or lower.



Using Smart Capture

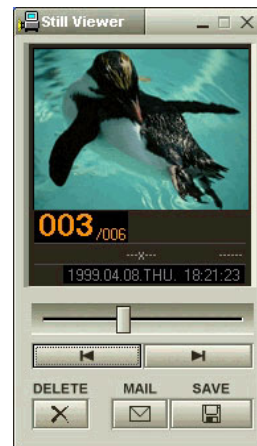
You can use Smart Capture to shoot still images and record video clips from a digital camera connected to your computer.

Capturing still images

You can capture still images from i.LINK™ compatible devices.

To capture still images, proceed as follows:


- 1 Connect an i.LINK™ compatible device to your computer.
 - 2 Launch **Smart Capture** from the **Start** menu, in **All Programs / Smart Capture / Smart Capture**. The **Finder** window appears, displaying the image of the subject.
 - 3 Adjust the focus on the subject.
 - 4 Click the **Capture** button in the **Smart Capture** window. The **Still Viewer** window appears. The image you have captured, is displayed in the **Still Image Display** area.
 - 5 To end **Smart Capture** click the  button in the top right corner of the window.
-  Make sure a camera is plugged to the i.LINK™ connector.




Displaying captured images in Still Viewer

To display captured images in **Still Viewer**, proceed as follows:

From the **Start** menu, select **All Programs / Smart Capture** and click **Still Viewer**. You can display, save or delete your images or send them by e-mail.

To end **Still Viewer**, click the  button.

 You can capture still images in the following sizes: 640 x 480, 320 x 240, 160 x 120 and 80 x 60 pixels.

When capturing a small resolution image (i.e., 80 x 60 pixels), the displayed image on the **Finder** window may appear blurred.



A gap may appear when a rapid-moving object is displayed. This is not a malfunction.


If you start Smart Capture while no camera is plugged, the Smart Capture **Finder** screen will appear blue.

You can capture still images and video clips from a digital video camera using **Smart Capture**.

Sending still images via e-mail

To send still images via e-mail, proceed as follows:


- 1 Launch **Still Viewer**.
- 2 Select the still image you want to send via e-mail, using  or .
- 3 Click **Mail**.
Your e-mail window appears with the selected file attached to your message.
- 4 Send the e-mail.


 You need to set up MAPI (Messaging Application Program Interface) when using the e-mail software. MAPI is a Microsoft® Windows program interface that enables you to send e-mails from within a Windows application and to attach the document you are working on to the e-mail note.

Shooting video clips

With a video camera connected to your computer you can use **Smart Capture** to capture video clips, as well as play them or send them via e-mail.

To capture video clips, proceed as follows:

- 1 Launch **Smart Capture**.
- 2 Select **Net Movie** using the **Switch Capture Mode** button.
The image appears in the **Finder**.
- 3 Turn the camera towards the subject.
- 4 Adjust the image.
- 5 Click the **Capture** button to shoot a video clip (you can shoot up to 120 seconds, according to the settings you chose in the **Recording options** section).
- 6 Click the **Capture** button when finished.
The **Movie Player** window appears, it contains the captured video clip.
- 7 Click ►| to playback the images. Click || to pause, ■ to stop playback.
- 8 To end **Smart Capture**, click .

 Make sure a camera is plugged to the i.LINK™ connector and turned on.

You can shoot video clips in the following formats:

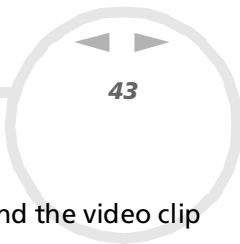
Non-compressed:

- Video 160 x 120, 24 bits, max. 10 frames/sec.
- Audio PCM, 11.025 kHz, 16 bits, monophonic

Compressed:

- Video MPEG1 160 x 112, maximum of 30 frames/sec.).
- Audio MPEG1, 44.1 kHz (effective maximum equivalent to 11.025 kHz), monophonic.

A gap may appear when a rapid-moving object is displayed. However, this is not a malfunction.



Sending video clips via e-mail

If you shoot a video clip in a low resolution format, its size will be small allowing you to send the video clip by e-mail.

To send video clips via e-mail, proceed as follows:

- 1 Launch **Smart Capture**.
- 2 Click **Movie Player**.
- 3 Click **Mail**.
The **Compression Settings** window appears.
- 4 Choose the compression rate by moving the slider.
- 5 Click **Start Compression**.
When compression is completed, you will be asked to attach the file to your e-mail.
- 6 Accept and send the e-mail.



Managing audio files with SonicStage


SonicStage lets you play and record audio CDs and import digital audio files while maintaining the copyright information of the contents. When you record an audio CD with SonicStage, it is encoded in ATRAC3 format onto your computer's hard drive. The imported data can be played on your computer or transferred to external devices or media. SonicStage converts your existing MP3, WMA and WAV format audio files into ATRAC3 format.

To open SonicStage, proceed as follows:

- 1 Click the **Start** button on the **Windows**[®] taskbar.
- 2 Point to **All Programs, SonicStage** and then click **SonicStage**.
You will be asked to register with CDDB (Compact Disk Database) Music Recognition Service.
- 3 When you have registered with CDDB, the **Confirm the setup of SonicStage...** dialog box appears.
You can set SonicStage as the default application for playing audio CDs by selecting the appropriate check box.
- 4 Click **OK**.
The **SonicStage** main window appears.



1	Feature tabs	Changes the screen view according to the selected feature.
2	Player control buttons	Controls playback functions, such as play, pause, stop, fast-forward and reverse.
3	Playlist drop-down list	Displays available playlists and audio files of the current feature tab.
4	File tree view	Displays the folders available on your computer.
5	Internet address drop-down list	Displays Internet addresses, if available. You can click the Go to URL link button to immediately connect to web sites.
6	File list view	Displays the contents of the folder selected in the file tree view.
7	Tutorial tab	Opens and closes the Tutorial feature.

 The CDDB® (Compact Disc Database) Music Recognition Service registration wizard enables you to register with CDDB. You need Internet access on your computer to register and use this service. For more information regarding CDDB registration, click the Help button.

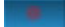



- ! Sony recommends the use of SonicStage when backing up or creating music CDs. Sony offers no guarantee for creating CDs, an option provided by RealJukebox2 Basic for Sony. There are some CD-ROM drives or drives that may encounter problems when using this feature. Please visit the RealNetworks website to get more detailed information regarding this issue. For general support information regarding all RealNetwork products, go to <http://service.real.com>.

Recording a CD

You can record songs from audio CDs and import them to playlists in SonicStage.

To record a CD, proceed as follows:

- 1 Insert an audio CD into your system's optical disc drive.
- 2 Click the **CD** tab.
- 3 Use the drop-down lists to select the file format.
- 4 You can select specific tracks on your CD by deselecting the check boxes from the tracks you do not want to record. You can clear all selected tracks by selecting the empty **Select All** check box, and then selecting the tracks you want to record.
- 5 Click the **Rec to Jukebox** button  to begin recording. When the recording is finished, the new playlist appears in the **File** tree view of the **Playlist** window. You can move to this feature view by clicking the **Playlist** tab.

 When you record from an audio CD on your optical disc drive for the first time, the **CD Drive Optimization** dialog box appears. Click **Start** to verify your optical disc drive. Once the verification is performed, recording begins.

You can display the name of the CD and its songs by clicking the **CD Info** button.

Transferring songs (check in/out)

You can transfer songs between the playlists on your **SonicStage** software and external devices or media (for example, Memory Stick™ Walkman, Network Walkman, CD-RW). For more information on using your external devices or media, see the documentation that came with the product.

These instructions are for using the check in/out 1-step method. For information on using the 2-step method, read the **SonicStage** online Help-files.

Checking out songs

Checking out songs means transferring audio files from a computer to an external device (for example, a portable player).

To check out songs, proceed as follows:

- 1 Connect the external device or insert the media (for example, a MagicGate Memory Stick™) into your computer.
- 2 Click the **Transfer** tab to display the **Transfer** window.
Your computer automatically recognizes the connected external device or media and lists the content information in a new panel on the right side of the **Transfer** window.
- 3 Select the playlist containing the song to check out.
The songs in the playlist are shown in the **Playlist view** panel located in the center of the **Transfer** window.
- 4 From the **Playlist view** panel, select the song to be checked out. To check out more than one song at a time, hold down the **<Ctrl>** key and select additional songs.
- 5 Click **Check Out** or drag the song to the appropriate position in the song list of the external device or media.
The checking out begins.



SonicStage does not work with the blue Memory Sticks™. For more information, read the OpenMG manual.


To cancel **Check Out**, click **Stop**, or click **Cancel** in the processing dialog box that is displayed during the **Check Out** process.

Checking in songs

After checking out audio files, you can transfer those files back to an external device or to the hard drive. This is what we call checking in.

The songs that you transfer like this can only be checked in to the hard drive of the same computer from which the songs were checked out.

To check in songs, proceed as follows:

- 1 Connect the external device or insert the MagicGate Memory Stick™ into your computer.
 - 2 Click the **Transfer** tab to display the **Transfer** window.
Your computer automatically recognizes the connected external device or media and lists the content information in a new panel on the right side of the **Transfer** window.
 - 3 Select the song to be checked in from the song list of the external device or media. To check in more than one song at a time, hold down the **<Ctrl>** key and click the additional songs.
 - 4 Click **Check In**, or drag the song(s) to the **Playlist** view panel. If you want to check in all the songs in the external device or media, click **In All**.
Check In begins.
-  To cancel **Check In**, click **Stop**, or click **Cancel** in the **Processing** dialog box that is displayed during the **Check Out** process.

Additional features

- ❑ **SonicStage Tutorial** – The features of **SonicStage** are described in the Tutorial. The user-friendly interface guides you directly through the **SonicStage** features.
- ❑ **SonicStage Backup Tool** – You can back up and restore all the music, graphics and information data managed by **SonicStage**. You must be connected to the Internet to use the **SonicStage** Backup Tool.
- ❑ **Import audio files in various formats** – You can import audio files with various formats, such as MP3 or WAV standards. You can also import audio files that comply with the Microsoft® Windows Media™ Technologies (WMT) standard, identified by ASF or WMA extensions. Manage your audio files through the **Playlist** feature of **SonicStage**.
- ❑ **Manage imported songs on the Playlist** – Additional features are available when you register your imported songs through the **Playlist** feature of **SonicStage**. You can manage your music by creating your own list of songs categorized by genre or artist, displaying your song list in the **Playlist** feature, and arranging your songs in a customized order using the **Playlist** folders. Edit your music by combining multiples songs into a single one, or divide one song into two, by using the **Combine** and **Divide** features.
- ❑ **Simple mode** – The main **SonicStage** window in **Simple mode** is a smaller, compact version of the **Full mode** view. This can be useful when you want to listen to songs with **SonicStage** while using other software, or whenever you feel that **Full mode** view is intrusive. The design of the main **SonicStage** window in simple mode can be changed by selecting a new “skin”, which enhances the appearance of the window. The **Simple mode** feature enables you to perform playback operations only.

Using Imaging software

The following Sony imaging software is installed on your computer:

- [PictureGear \(page 51\)](#)
- [PictureToy \(page 57\)](#)
- [VisualFlow \(page 63\)](#)

PCV-RX203 users: Please be aware that the features described in this section may differ from the version installed on your computer. Please refer to the online Help of each application for more details.

Using PictureGear

PictureGear is your assistant for creating and editing photos, backgrounds, wallpapers, slide shows, personal screen savers, etc. You can even animate your preferred gif files with Gif Animation Tools or play back movies in a variety of formats. You can also create albums from your favourite images and upload them to a Web page.


To open PictureGear, proceed as follows:

- 1 Click the **Start** button on the Windows[®] taskbar.
- 2 Point to **All Programs** and then **PictureGear**.
- 3 Click **PictureGear**.



When you start PictureGear for the first time, the **Let's try PictureGear** window appears. It gives you a quick overview on how to view and edit still images, print various images, make a home page, and make stitches from a movie.

When you start PictureGear for the first time, the sample slides provided with PictureGear are displayed automatically. Next time you start PictureGear, the slides you last viewed, will be displayed.

You can always exit PictureGear by clicking the **Close** button  in the upper right corner of the main window.

Creating a Collection

All the images and movies you use to create a slide show, a screen saver or a photo album, is a collection.

To create a collection, proceed as follows:

- 1 Launch **PictureGear**.
The **PictureGear** main window appears.
- 2 In the **Folder** box, select the location of your pictures.

- 3 Select the pictures you want to include in your collection.
If you hold down the **<Ctrl>** key, you can select several pictures at the same time.
If you hold down the **<Shift>** key, all the images located between the two images you have clicked, are selected.
If you press the **<Ctrl>** and the **<A>** key at the same time, all the images in the folder are selected.
- 4 From the **Collection** menu, choose **Create New Collection**.
The **Create New Collection** dialog box appears.
- 5 Enter a name for your collection, then click **OK**.
- 6 Click **Collection** in the **Folder** box.
- 7 Click the picture with the left mouse button and hold the left button.
- 8 Drag the pictures to the **Collection** you created.
When you click the created **Collection**, the selected pictures are displayed.

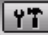
Viewing a Slide Show

During a slide show, images are displayed one after another at a specified interval.

To view a slide show, proceed as follows:

- 1 Create a **Collection**.
- 2 Click **Select All** from the **Edit** menu to display all images in the display area.
- 3 Select **Slide Show View...** from the **View** menu.
The slide show is displayed.
If you press the **<Esc>** key, the screen returns to the **Preview** area.

To change the slide show settings while viewing a slide show, proceed as follows:

- 1 Click the **Slideshow settings** button .
The **Slideshow effect** dialog box appears.
There are 3 parts:
 - Effect:** here you can add sound or special effects to your slide show.
 - Display change:** you have 4 options:
If **Mouse click** is selected, the next slide is displayed when you click the left mouse button.
When **Automatic** is selected, images are displayed one after another at the interval specified in **Display time**.
If **Repeat** is selected, the slide show will repeat itself until you stop it.
Furthermore, if the **Control panel** is switched on, the control bar is displayed at the bottom of the screen.
 - BGM:** if you select this, you can browse for new sound files.
- 2 After choosing all the effects you want, click **OK**.
The slide show settings have been changed.

Creating a Screen Saver

A screen saver is a program which protects the screen by automatically covering a still image with a moving image if the computer has not been used for a few minutes.

To create a screen saver, proceed as follows:


- 1 Create a **Collection**. See **Creating a collection**.
- 2 Click **Select All** from the **Edit** menu to display all images in the display area.
- 3 Select **Screen Saver** from the **Utilities** menu.
The **Screen Saver Settings** dialog box appears.
 - You can arrange the images in the order you want them displayed. To do this, click an image from the **Slide** list and click the **Up** and **Down** buttons.
 - If you select the **Random Playing** check box, the order for slides set in the **Slide** list is ignored and the slides are displayed at random.
 - You can also select effects and sound for the screen saver.
- 4 Click **OK**.
The screen saver is set.

Creating an HTML Photo Album

You can create a photo album in HTML format using slides as the source images.

To create an HTML photo album, proceed as follows:

- 1 Create a **Collection**. See **Creating a collection**.
- 2 From the **Utilities** menu, select **Album Maker**.
The **PictureGear Album Maker** dialog box appears.
- 3 Choose a design template for your album.
- 4 Give a name to your album in **Edit Title of the album**.

- 5 Click the **Customize the design** button to add pictures, frames, text, and effects. The **Panel Album** dialog box appears.
- 6 Follow the wizard and click **Finish**.
PictureGear now creates your photo album.
When the process is done, the **Completed** dialog box appears.
 - Click **Save** to select the location where you want to save your album.
 - Click **Check** to display your photo album in a browser.
 - Click **Send** to upload the album to the server.
 - Click **Back** to create the album again.
- 7 Click **Save**.
The **Select the folder to save album** dialog box appears.
- 8 Select the folder to save the created album.
- 9 Click **OK**.
PictureGear asks if you are sure you want to create a folder.
- 10 Click **Yes**.
You get the message that the album was saved successfully.
- 11 Click **OK**.
 Click the **Make Soon** button to create your album immediately, using the PictureGear default settings.

Using PictureToy

PictureToy allows you to superimpose pictures and texts on still images (such as photographs and maps) displayed on the desktop.

It also allows you to easily place arrows on specific areas of a computer map, or to overlay photographs taken with a digital camera with illustrations.

You can select the underlay image either at the start up of PictureToy from other Sony made software, or directly from PictureToy.

The original image file of an underlay image remains unchanged.

To learn the names and functions of the **Operation Panel**, refer to the online help of PictureToy.

Starting and quitting

To start PictureToy, proceed as follows:

- 1 Click **Start** and select **All Programs / PictureToy / PictureToy**.
PictureToy starts and the startup screen is displayed.
- 2 To select an underlaying image, open the image file, you wish to use as the underlay image, with another software. Then drag the icon from the main window of PictureToy, and drop it on the underlaying picture.
The image will be displayed in PictureToy. You can then draw on the picture displayed in the **operation panel**.
- 3 To draw a picture over an empty background, click the **New Canvas** button.
A new, white canvas is created on the desktop.

To quit PictureToy, proceed as follows:

Click the **Quit** button.


You can also click the **Menu** button and then click the **Exit** button.

Starting from Sony applications

It is possible to start PictureGear from PictureGear and VisualFlow.

To start PictureToy from PictureGear, proceed as follows:

- 1 Launch **PictureGear**.
- 2 Open the image file, which you want to use as the underlying picture with the **Editor**.
- 3 Select **PictureToy** from the **Filter** menu of the PictureGear's **Editor** window.
PictureToy starts and you can draw on the image.

 PictureGear Ver.5.0 or later must be installed to use this function.

Refer to the PictureGear Operation Manual (Online Manual) and Help for details.

To start PictureToy from VisualFlow, proceed as follows:

- 1 Launch **VisualFlow**.
- 2 Enlarge the image, which you want to use as an underlay, using VisualFlow.
- 3 Click the **Application** icon in VisualFlow.
A list of applications appears.
- 4 Click the **PictureToy** icon.
When PictureToy is running, the image is displayed and you can draw on it.

 VisualFlow Ver.2.0 or later must be installed to use this function.

Refer to the VisualFlow Operation Manual (Online Manual) and Help for details.

Drawing and using pictures

Drawing freehand

You can select a variety of pens, such as magic markers, or fluorescent pens. You can also set the software to add an arrow to the end point of a line.

To draw lines freehand, proceed as follows:

- 1 Click the **Pen Settings** button in the **Operation Panel**.
The display of the **Details Panel** changes.
- 2 Set the pen on the **Details Panel** as follows:
 - Click the pen type you wish to use.
You can click the arrows to display more pen types.
 - Click the pen size you wish to use.
You can click the arrows to display more pen types.
 - When you click the **Arrow** icon, an arrow is added at the end of the line you have drawn.
- 3 To select the colour of a line, set the colour as required and click the **Color** button to determine the colour of the line.
- 4 Drag the mouse pointer on the main window.
A line with the value you set, is drawn.

Attaching stamps and balloons

In PictureToy, you can add stamps or balloons to your favourite pictures.

To attach stamps and balloons, proceed as follows:

- 1 Make sure the image for which you want to attach a stamp or a balloon is opened in PictureToy.
- 2 Click the **Stamp** button to paste stamps. Click the **Balloon** button to paste balloons. The **Details Panel** displays the stamps or balloons you can choose from.
- 3 Click the arrows to display more balloons or stamps.
- 4 Click the **Color** button to select the colour of the stamp or balloon.
- 5 Click the position where you want to paste it.
A stamp or balloon is pasted where you clicked.

 You can resize, move, or rotate stamps and balloons simply by dragging their frames. The indicator direction of a balloon is also variable.

Writing text

You can use your keyboard to write text or any message on the image.

To write text on an image, proceed as follows:

- 1 Make sure the image for which you want to attach a stamp or a balloon is opened in PictureToy.
- 2 Click the **Text Input** button.
- 3 Type the text you want to attach into the text box of the **Details Panel**.
- 4 To select a different font, click the **More** button.
A dialog box is displayed which allows you to select fonts.
- 5 Click the arrows to display the font you wish to use and select it.
- 6 Click the **Bold** or **Italic** button to format your text.
- 7 Click the **Color** button to select the text colour.
- 8 Click the position where you want the text to be inserted.
The text string is inserted where you clicked.

Managing pictures

The underlying image and the picture drawn on it can be saved together as one superimposed image in JPEG or BMP format.


You can also attach PictureToy images to your e-mail message and transmit or print them.

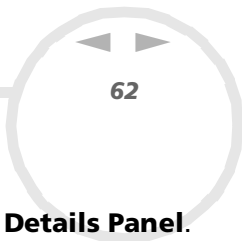
You can send PictureToy images to another software application via your clipboard.

To save pictures as one PictureToy image, proceed as follows:

- 1 Make sure that the underlying image and the picture drawn on it are opened.
- 2 Click the **Save** icon.
You can also click the **Menu** icon and click the **Save** button in the menu displayed in the **Details Panel**.
- 3 Select the destination folder in the **Save in** list.
- 4 Select the file type in the **Save as type** list.
You can select the following types of extensions:
 - Windows Bitmap Mix (Extension BMP)
 - Windows Bitmap Mask (Extension BMP)
 - JPEG Mix (Extension JPG)
 - JPEG Mask (Extension JPG).

Mix combines the underlayed image with the picture that was drawn.
Mask saves only the picture that was drawn.
- 5 Type the name of the file in the **File name** text box.
- 6 Click **Save**.
The picture is saved and the dialog box closes.

 The PictureToy image is saved as a different file, so the original underlying remains unchanged.



To print the pictures, proceed as follows:


- 1 Make sure that the underlying image and the picture drawn on it are opened.
- 2 Click the **Menu** icon and click the **Print** button displayed in the menu displayed in the **Details Panel**. The **Print** dialog box appears.
- 3 Click **OK** to start printing.

To send the pictures by e-mail, proceed as follows:

To attach the picture to an e-mail, either click the **e-mail** button or click the **Menu** icon and then select **mail** from the **Details Panel**.

The e-mail software starts with the PictureToy image attached.

★ PictureToy images are attached as JPEG (extension JPG) format files.

 To attach a PictureToy image to e-mail and send it, it is necessary to set MAPI with the e-mail software program. Refer to your e-mail software operation Manual and Help for details on attaching files and encoding methods.

When you quit PictureToy, the image is automatically saved on the clipboard, which enables you to use the image on other software applications.

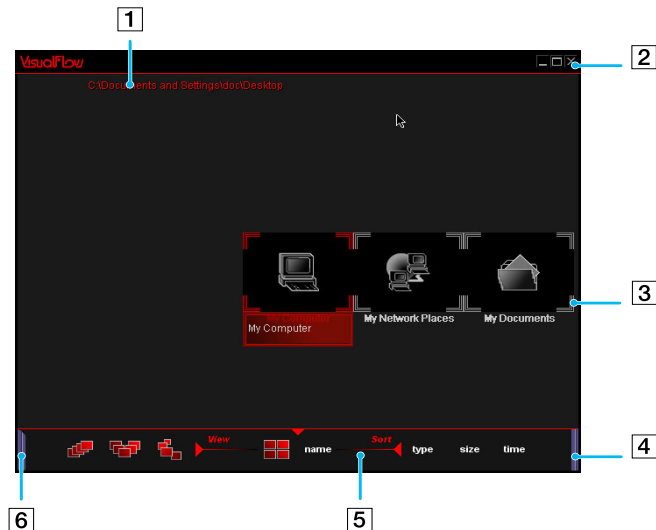
Using VisualFlow


VisualFlow allows you to interactively browse through files stored on a Memory Stick™, your hard drive, a CD-ROM or a floppy disk that contains still images, movies or audio clips. It also allows you to select files for display or playback by other applications.


You can use the mouse, touchpad, game control or Jog Dial™ (where applicable) to control the display.

To open VisualFlow, proceed as follows:

- 1 Click the **Start** button on the Windows® taskbar.
 - 2 Point to **All Programs** and then **VisualFlow**.
 - 3 Click **VisualFlow**.
- VisualFlow starts and the following screen appears.



1	Path name of the displayed directory.
2	Exit button: Press to exit VisualFlow.
3	Click a slide to bring it to the front. Click again to open it. Use the right mouse button or click  to move to the previous directory.
4	Sub-toolbar: Move the mouse across the right end of the toolbar to see more functions.
5	Toolbar: Use the View and Sort options to change the display accordingly.
6	Memory Stick™ info icon: Move the mouse across the left end of the toolbar to see detailed information (kind of file, number of files, total size) on the Memory Stick™ you are using.

 VisualFlow will be automatically launched when a Memory Stick™ is inserted. In this case, the images on the Memory Stick™ will be immediately visible.

Folders and drives stored on a Memory Stick™ are displayed as slides.

VisualFlow cannot play audio clips that are stored as a **MemoryStick Audio** format (clips with the **MSA** extension). To play audio clips that are stored as **MemoryStick Voice** format (files with the **MSV** extension), the **MemoryStick Voice Editor** must be installed on your computer.








If you start VisualFlow from the **Start** menu, VisualFlow will search for the Memory Stick™, which is connected to your VAIO computer. In order to find the Memory Stick™, the MEMSTICK.IND file should be located on the Memory Stick™ itself. If you have deleted the file or formatted the Memory Stick™ with Windows Formatter, VisualFlow will not be able to find the Memory Stick™ device. In that case, please copy the MEMSTICK.IND file from C:\Program Files\Sony\VisualFlow to the Memory Stick™.

Using the sub-toolbar

Move the mouse over the right-hand side of the toolbar to reveal the sub-toolbar and its functions:





Click:

To do this:

Sound: 	Click to turn the sound on or off.
Show folders: 	Click to show or hide the folder configuration in Memory Stick™ view.
Blur: 	Click to enable or disable ghost trails for the moving slides.
Full-screen: 	Click to maximise the screen.
Background: 	Click to see background effects.
Help: 	Click to display the online help.
Exit: 	Click to quit VisualFlow.




Changing the view and display order

In the toolbar of VisualFlow, you can use the **View** and **Sort** options to choose a different slide layout.

- **View** buttons: Click these buttons to define a mode for displaying the slides.
 - Semi-circular 
 - Checkerboard 
 - Spiral 
 - Linear 
- **Sort** button: Selects the order in which slides are sorted. Choose between file **name**, **type**, **size** and **time** (of creation).

Displaying slide information

For the slide at the centre of the display, you can view its file information. Simply click the slide you want to move to the center. A red frame appears around the box and the file information is displayed, including name, size, creation date and file type. The file type is identified by the following icons:


- Still image 
- Movie 
- Audio clip 

Using PictureGear and PictureToy with VisualFlow

You can use other Sony applications, i.e., PictureGear and PictureToy, to view or play your slide images.

To use other software, proceed as follows:

- 1 Launch **VisualFlow**.
- 2 Select the slide you want and click to enlarge it.
- 3 Click the **Application** icon at the bottom of the screen.
- 4 Click the relevant software icon, for example PictureToy or PictureGear.
The selected application is launched and you can start editing your image.

 This option is only for image or video files, not folders or other formats.

For more information on VisualFlow, such as shortcuts and enjoying your own slideshow, see the online help for VisualFlow.

Customizing your VAIO computer


The following sections briefly describe how to change the main settings of your computer. Among other things, you will learn how to prepare your modem for use, how to use and customize the look of your Sony software and utilities, etc.

Configuring your modem

Before you can start using your internal modem, or each time you use your modem while traveling, make sure that the country of the active location defined in the **Phone and Modem Options** dialog box matches the country you are dialing from.

To configure your modem, proceed as follows:

- 1 Click **Start** and then **Control Panel**.
- 2 Double-click **Phone and Modem Options**.
The **Phone and Modem Options** dialog box appears.
If you do not see the **Phone and Modem Options** dialog box, click **Switch to Classic View** on the left side.
- 3 Select your location on the **Dialing Rules** tab.
- 4 Click the **Edit** button to change the current configuration.
The **Edit Location** dialog box appears.
Or
Click the **New** button to configure your modem.
The **New Location** dialog box appears.
- 5 Check the country/region settings, and make sure it matches the place you are dialing from.
- 6 If you modified your location settings, click **Apply**, and then **OK**.
The **Phone and Modem Options** dialog box appears.

- 7 Check that your modem is listed in the **Modems** tab.
If your modem is not listed, click **Add** and follow the wizard.
 - 8 Click **Apply/OK**.
Your modem is configured.
-  Before applying new country settings, please make sure your phone line is disconnected from your VAIO computer.

Changing your windows design with the UI Design Selector program

You can change the window design of Sony software compatible with the **UI Design Selector** program.

To change the window design using UI Design Selector, proceed as follows:


- 1 Click **Start**, and then **Control Panel**.
If you do not see **UI Design Selector**, click **Switch to Classic View** on the left side.
- 2 Double-click **UI Design Selector**.
The **UI Design Selector** dialog box appears.
- 3 Click << or >> and select the design you like.
- 4 Click **Apply**.
The **UI Design Selector** window design changes, to give you a preview of the design you chose for the Sony software.
- 5 To try another design, click << or >>.
- 6 Click **OK** once you are satisfied with your choice.
The **UI Design Selector** dialog box disappears and changes the window design of Sony software as you selected.

Setting a Sony wallpaper

Your Sony VAIO computer offers you, among many other features, a choice of wallpapers. You can change the wallpaper, the background of your desktop, as many times as you like. There are several VAIO-specific wallpapers to choose from.

To set another VAIO wallpaper, proceed as follows:

- 1 Go to **Control Panel**.
Double-click the **Display** icon.
The **Display Properties** dialog box appears.
- 2 Click the **Desktop** tab.
A list of Windows and VAIO wallpapers is displayed.
- 3 Select a wallpaper in the **Background** list.
You can see a preview of this wallpaper in the monitor above the **Background** list.
- 4 Adjust the position of the wallpaper with the **Position** drop-down list.
- 5 Click **Apply** when you have found the appropriate wallpaper.
- 6 Click **OK** to close the **Display Properties** dialog box.
The wallpaper is applied to your computer.

 A higher screen resolution reduces the size of items on your screen and increases the relative space on your desktop.

You may not be able to increase the screen resolution above a certain level. Your monitor and video adapters, for example, determine to which extend you can change the resolution.


Starting your favourite software

Using shortcut keys

The **VAIO Action Setup** software enables you to start your favourite software by simply pressing a **shortcut key (S Key)**.

You can also refer to the VAIO Action Setup Help for more detailed information on using S Keys.

- 1 From the **Start** menu, select **All Programs - VAIO Action Setup - VAIO Action Setup**.
The **VAIO Action Setup** dialog box appears.
- 2 Click the icon representing the key combination you want to use to launch automatically your application.
The **Select Application** dialog box appears.
- 3 Select the application you need by using the browse options to the left.
- 4 Click **Next**.
- 5 Confirm the name and path of the selected application.
- 6 Click **Next**.
- 7 Select the configuration name for the selected application, and enter a description if needed.
- 8 Click **Finish**.

 You can use the internal timer to start software at a specific time. The timer can start applications even when the computer is in **Hibernate** mode.

Using i.LINK™

You can preset your i.LINK™-equipped devices to perform certain functions, such as automatically starting DVgate™ applications or connecting two VAIO computers.

To preset your i.LINK™ device to perform a certain function, proceed as follows:

- 1 From the **Start** menu, select **All Programs - VAIO Action Setup - VAIO Action Setup**.
The **VAIO Action Setup** dialog box appears.
- 2 Click **i.LINK**.
- 3 Click the **Advanced Setting** tab.
- 4 Select the **Enable i.LINK launcher function** check box and click **Apply**.
- 5 Connect the device to your computer with your i.LINK™ cable.
- 6 Turn on the device.
The **VAIO Action Setup** dialog box appears.
- 7 Click **OK**.
- 8 To modify the device name, click the current name in the list box and click **Modify device name**.
- 9 Type the name and click **Apply**.
- 10 To assign an application, click **Modify**.
The **Select Application** dialog box appears.
- 11 Select the application and click **Next**.
- 12 Click **Next** to confirm the application name.
The **Input Application Name** dialog box appears.
You may change the name and description of the application you want to launch.
- 13 Click **Finish** to complete this step.
The next time the device is connected and turned on, the assigned application is launched automatically.

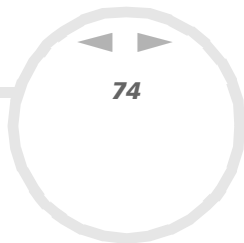
Selecting display modes

This desktop uses the **nVIDIA GeForce2 Ti** video controller. You can select which display is used when the computer is connected to an external display.

Make sure your desktop is shut down before you connect the external display to your desktop. If you connect the external display when your desktop is active, you will not be able to select an external display.

To select a display, proceed as follows:

- 1 Click the **Start** button, and then click **Control Panel**.
The **Control Panel** appears.
- 2 Double-click **Display**.
The **Display Properties** dialog box appears.
- 3 Click the **Settings** tab.
- 4 Click the **Advanced** button.
The **GeForce2Ti Properties** dialog box appears.
- 5 Click the **Monitor** tab.
- 6 Click the **Change** button.
The **Select Device** window appears.
- 7 Select the manufacturer and the model of the external display.
- 8 Click **Finish**.
The **GeForce2Ti Properties** dialog box appears again.
- 9 Click the **Monitor** tab.
- 10 Click the **Change** button.
The **Update Device Driver Wizard** appears.
- 11 Select the **Automatic search for a better driver (recommended)** option button.
- 12 Click **Next**.




- 13 Click **Finish**.

The **GeForce2Ti Properties** dialog box appears again.

- 14 Click **Apply** and **OK**.

- 15 Restart your computer.

 Turn on the computer after you have turned off the peripheral devices.

Installing and updating applications

This section explains how to install, run or uninstall a software. Furthermore, you will learn how to download the latest updates from our website.

Installing software

Before installing the applications:

- Install and connect a hardware device, if necessary (see the **Drivers** section);
- Quit all Windows® programs.

To install an application, proceed as follows:

- 1 Click **Start** and then **Control Panel**.
- 2 Open **Add or Remove Programs** in **Control Panel**.
The **Add or Remove Programs** dialog box appears.
- 3 Click **Add New Programs**, and then click **CD or Floppy**.
The **Install Program From Floppy Disk or CD-ROM** window appears.
- 4 Insert the first installation floppy disk or CD-ROM into the upper disc drive and click **Next**.
The **Run Installation Program** appears.
- 5 Click **Browse...** to find the installation program.
The **Browse** window appears.

- 6 Select the installation program and click **Open**.
The path of the installation program appears in **Open:** text box.
- 7 Click **Finish**.
A **License Agreement** dialog box might appear.
- 8 Read the agreement and click **Yes** to accept.
You are asked to define the location where you want to install the software.
- 9 Click **Browse** to select the folder and click **Next**.
If necessary, select the type of installation you wish and click **Next**.
The software installation begins.
Make sure to select **Yes, I want to restart my computer now** if you are asked to.
- 10 Click **Finish**.
Installation is complete and your computer restarts.

 When using **Add or Remove Programs**, you can only install programs that were written for Windows® operating systems.

Changing or removing software

You can remove or change a software application at any time.

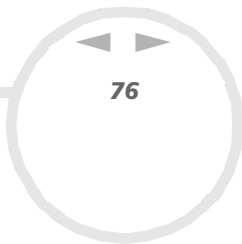
To change or remove a software, proceed as follows:

- 1 Click **Start**, click **Control Panel**, and then click **Add or Remove Programs**.
- 2 Select the software you want to change or remove.
 - To change a program, click **Change/Remove** or **Change**.
 - To remove a program, click **Change/Remove** or **Remove**.

! When you click **Change or Remove**, some programs may be removed without any further warning.

 You can sort programs by selecting different options in **Sort by**.

Add or Remove Programs will only remove programs that were written for Windows® operating systems. For other programs, check the documentation to see if other files (such as .ini files) should be removed.



Uninstalling software

Before proceeding, close the application you want to uninstall.

To uninstall software, proceed as follows:

- 1 From the **Start** menu, click **Control Panel**.
The **Control Panel** window appears.
- 2 Double-click the **Add/Remove Programs** icon.
The **Add/Remove Programs** dialog box appears.
- 3 Select the software you wish to uninstall from the list of currently installed programs, then click **Change/Remove**.
The **Setup** dialog box appears.
- 4 Select **Remove**, and then click **Next**.
The **Confirm File Deletion** dialog box appears.
- 5 Click **OK**.
- 6 If the **Locked file detected** dialog box appears, click **Reboot**. The computer restarts once uninstallation is completed and all previously used files are deleted.
- 7 If the **Shared file detected** dialog box appears, it is recommended that you click **No** to keep shared files.
- 8 Click **Close**.
The software is uninstalled.

Caution

Windows[®] File protection

Installing a program might overwrite shared system files such as **dynamic-link libraries** (DLL files)* and executable files (EXE files). When system files are overwritten, system performance becomes unpredictable, programs behave erratically, and the operating system can fail.

Never delete files with the following extensions: SYS, DLL, OCX, TTF, or FON.

In Windows[®] XP, **Windows File Protection** prevents the replacement of protected system files such as SYS, DLL, OCX, TTF, FON, and EXE files. **Windows File Protection** runs in the background and protects all files installed by the **Windows Setup** program.

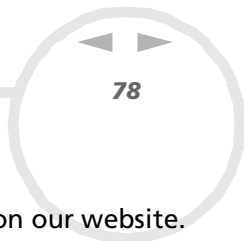
Windows File Protection detects attempts by other programs to replace or move a protected system file. It also checks the file's digital signature.

* This is an operating system feature that allows executable routines (generally serving a specific function or set of functions) to be stored separately as files with DLL extensions. These routines are loaded only when needed by the program that calls them.

File Signature verification

When you install a new application on your computer, you might overwrite system files and device driver files with unsigned or incompatible versions, which provokes system instability.


The system files and device driver files provided with Windows[®] XP have a Microsoft digital signature, which indicates that the files are original, unaltered system files or that they have been approved by Microsoft[®] for use with Windows[®].



Downloading software

Please note it is possible to download the latest upgrades of software for your computer on our website. Just click the following link to access it: www.vaio-link.com

To download the latest upgrades, proceed as follows:

- 1 Go to www.vaio-link.com and choose your language.
 - 2 Fill in the two codes and click **GO**.
 - 3 Select your VAIO series from the drop-down list.
 - 4 Select **Downloads** and follow the procedure.
A list of Sony applications is displayed.
 - 5 Choose the appropriate upgrade and follow the online instructions to download it.
-  To install your application, see the **Installing software (page 74)** section.

Managing drivers


A driver is a software enabling you to use hardware devices. For example, in order for you to be able to use a printer, you must first install its driver. Many drivers, such as the mouse driver, come with the operating system.

This section explains how to install, check, update or uninstall a driver. The Windows® XP Rollback feature is also explained. Finally, you will learn how to download the latest drivers from our site.

Installing a driver

To install a driver, proceed as follows:

- 1 Insert the application CD-ROM into the upper disc drive (or the floppy disk or the CD-ROM accompanying the device you want to configure).
- 2 Connect the device that needs a driver, to your computer.
The **Found New Hardware Wizard** screen appears.
- 3 Select **Specify a location**, then click **Next**.
- 4 When installing a driver from the provided CD-ROM (or disk) by using a CD-ROM (or disk) drive connected to the computer, select the **Drivers** folder on the CD-ROM (or disk) drive.
- 5 When installing a driver after having copied the contents of the provided CD-ROM (or disk) to your hard disk, browse to the appropriate subdirectory containing the driver. The subdirectory should be found in the folder you copied from the CD-ROM (or floppy disk).
- 6 Click **OK** to begin the search procedure.
- 7 Click **Next** to install the driver.
A new window appears when the driver has been installed.

- 8 Click **Finish**.
You may be asked to restart your machine.
 - 9 Click **Yes**.
The driver is installed.
-  To install your device driver, you must be logged on to your computer with an administrator account.

Checking the driver's installation

When the computer restarts, verify that the device is working properly.

To verify the driver's installation, proceed as follows:

- 1 From the **Start** menu, click **Control Panel**.
The **Control Panel** window appears.
- 2 Double-click the **System** icon.
The **System** dialog box appears.
If you do not see the **System** icon, click **Switch to Classic View** on the left side.
- 3 Click the **Hardware** tab, then click **Device Manager**.
- 4 Double-click the option corresponding to the device you installed, then double-click your device.
The **Properties** dialog box appears.
- 5 Make sure that the **This device is working properly** message is displayed under **Device status**.
- 6 Click **OK**.
Close all the opened windows, your device is ready for use.

The device is not working properly in the following cases:

- Your device is shown in **Device Manager** with a yellow question or exclamation mark.
Right-click your device and click **Uninstall**. Then repeat from step 2 in **Installing a driver (page 79)**.

- ❑ Double-clicking the category of your device in the device manager list does not display your device. You have to remove your device. Please refer to **Uninstalling a driver (page 83)** to remove it. Then repeat from step 2 in **Installing a driver (page 79)**.
- ❑ Double-clicking **Other devices** displays your device. You have to right-click your device, then click **Uninstall**. Repeat from step 2 in **Installing a driver (page 79)**.
- ❑ If the **This device is working properly** message is not displayed, the device is not working properly. Click **OK** to close the **Properties** dialog box, then reinstall the driver as follows:
 - ❑ Right-click **Uninstall**.
 - ❑ When the **Confirm Device Removal** dialog box appears, click **OK**.
 - ❑ Click **Yes** and restart the computer.
 - ❑ When the computer restarts, repeat from step 2 in **Installing a driver (page 79)**.
- ❑ If your device is not displayed in the **Properties** dialog box, the device is not working properly. Repeat steps 1 through 4 in the previous sections to verify the driver's installation. Click your device, then click **Uninstall** to remove the driver. Click **Yes** to restart the computer. When the computer restarts, repeat from step 2 in **Installing a driver (page 79)**.

Updating a driver

To update the driver, proceed as follows:

- 1 Click **Start** on the taskbar.
- 2 Click **Control Panel**.
- 3 Click the **Printers and Other Hardware** icon.
And then click the device you want to revert.
- 4 On the **Hardware** tab, click **Properties**.
- 5 On the **Driver** tab, click **Update driver**.
- 6 Follow the instructions that appear on your screen. You can have Windows search for the driver, or point to the driver's location yourself.

Or:

- 1 Click **Start** on the taskbar.
- 2 Click **My computer** from the menu.
- 3 Click **View system information** on the left of the window.
- 4 Click the **Hardware** tab, then click **Device Manager**.
- 5 Double-click the option corresponding to the device you installed, then double-click your device.
The **Properties** dialog box appears.
- 6 Click the **Driver** tab.
- 7 Click **Update driver**.
The driver is updated.



To update your device driver, you must be logged on to your computer with an administrator account.

Uninstalling a driver

Leave the device connected to your computer while uninstalling the driver.

To uninstall the driver, proceed as follows:

- 1 Click **Start** on the taskbar.
- 2 Click **Control Panel**.
- 3 Click the **Printers and Other Hardware** icon.
And then click the device you want to revert.
- 4 On the **Hardware** tab, click **Properties**.
- 5 On the **Driver** tab, click **Uninstall**.
- 6 If you are prompted to restart your computer, click **Yes**.
The **Uninstall** button is unavailable if removing the driver would make your device unusable.

Or:

- 1 Click **Start** on the taskbar.
- 2 Click **My computer** from the menu.
- 3 Click **View system information** on the left of the window.
- 4 Click the **Hardware** tab, then click **Device Manager**.
- 5 Double-click the option corresponding to the device you installed, then double-click your device.
The **Properties** dialog box appears.
- 6 Click the **Driver** tab.
- 7 Click **Uninstall**.
The driver is uninstalled.

 To uninstall your device driver, you must be logged on to your computer with an owner account.

Restoring your system

System Restore is a feature of Microsoft® Windows® XP that restores your computer to a previous state, if a problem occurs, without losing your personal data files.

System Restore monitors changes to the system, and it automatically creates easily identified restore points. These restore points allow you to revert the system to a previous time. They are created daily and at the time of significant system events (such as when an application or driver is installed).

To revert to your previous driver, proceed as follows:

- 1 Open the device that is not working correctly in **Control Panel**.

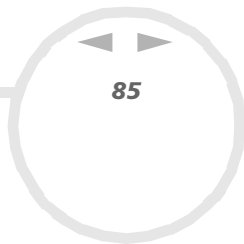
To open the device:

- Click **Start** on the taskbar.
- Click **Control Panel**.
The **Control Panel** window appears
- Click the **Printers and Other Hardware** icon.
- And then click the device you want to revert.

- 2 On the **Hardware** tab, click **Properties**.
- 3 Click the **Driver** tab.
- 4 On the **Driver** tab, click **Roll Back Driver**.

Or:

- 1 Click **Start** on the taskbar.
- 2 Click **My computer** from the menu.
- 3 Click **View system information** on the left of the window.
- 4 Click the **Hardware** tab, then click **Device Manager**.
- 5 Double-click the option corresponding to the device you installed, then double-click your device.
The **Properties** dialog box appears.
- 6 Click the **Driver** tab.



- 7 On the **Driver** tab, click **Roll Back Driver**.
You have your previous driver back.



You must be logged on to your computer with an owner account in order to complete this procedure.

Restoring your computer does not affect or change your personal data files.

For more information about System Restore, see Windows[®] Help.

Downloading drivers

Please note it is possible to download the latest versions of drivers for your computer on our website. Just click the following link to access it: www.vaio-link.com

To download the latest drivers, proceed as follows:

Downloading drivers

Please note it is possible to download the latest versions of drivers for your computer on our website. Just click the following link to access it: www.vaio-link.com

To download the latest drivers, proceed as follows:

- 1 Go to www.vaio-link.com and choose your language.
When you access the VAIO-Link for the first time, the **Web Disclaimer** appears.
- 2 Fill in the two codes and click **GO**.
- 3 Select **Downloads** and follow the procedure.
A list of available downloads appears.
- 4 Choose the appropriate driver and follow the online instructions to download it.
To install your driver, see **Installing a driver (page 79)**.

Using the product recovery CD-ROMs

The set of Product Recovery CD-ROMs supplied with your computer allow you to perform a full system recovery, and help you reinstall individual applications or the device drivers manually.

The system recovery process allows you to reinstall an image of the hard disk as it was before you started using your computer.

Perform a **System Recovery** in the following cases:

- In the event of a serious system crash.
- If you want to modify the size of your partitions (not available on PCV-RX203).

Perform an **Application Recovery** to:

- Reinstall an individual driver if a device is not functioning properly.
- Reinstall an individual application if you have problems running it.

Performing a system recovery

Use this option only when your system is seriously damaged, e.g., if Windows® does not work any longer, or your PC behaves abnormally. The system recovery will completely reinstall the originally configured system on your C: drive. Your D: drive data will not be deleted if you choose to keep the same partition settings. If you decide to modify the size of your partitions, the existing data on both drives (C: and D:) will be deleted.

When performing a system recovery, you can opt for a **Standard Recovery** or an **Advanced Recovery**.

When choosing a **Standard Recovery**, you leave the current partition sizes untouched. When choosing an **Advanced Recovery**, you can adapt the partition sizes.

 You can only use these product recovery CD-ROMs on the Sony computer you purchased and not on any other Sony PC or other manufacturer's PC!

The recovery process can last up to sixty minutes.

- ! Applying a system recovery means that you will lose all your data stored on your C: drive (and your D: drive if you modify partition settings).
- ! Make sure that your computer is connected to AC (not to batteries) before you attempt a system recovery.
- ! When the recovery is performed, you must remove the recovery CD-ROM from the drive before restarting the computer. If the CD-ROM is still in the drive, you will restart a recovery process.

Performing a standard system recovery

To perform a standard system recovery, proceed as follows:

- 1 Take the system recovery CD-ROM.
- 2 Turn on your computer (using AC power only) and insert the system recovery CD-ROM into the upper disc drive.
- 3 Shut down your computer (**Start/Turn Off Computer/Turn off**).
- 4 Wait ten seconds.
- 5 Turn your computer back on.



- 6 On the first screen that appears, press **S (Standard)**.
The system recovery CD screen appears, asking you if you are really sure you want to continue.
- 7 Click **Y (Yes)**.
- 8 You will be asked again whether you are really sure to continue.
- 9 Confirm.

Performing an advanced system recovery

To perform an advanced system recovery, proceed as follows:

- 1 Take the system recovery CD-ROM.
- 2 Turn on your computer (using AC power only) and insert the system recovery CD-ROM into the upper disc drive.
- 3 Shut down your computer.
- 4 Wait ten seconds.
- 5 Turn your computer back on.
- 6 On the first screen that appears, press **A (Advanced)**.
The system recovery CD screen appears, asking if you wish any changes made to the partitions on your hard disk.
At this stage 3 options are available.
 - Recovering the system without changing partitions.
 - Recovering the system with modified partition sizes.
 - Aborting the recovery process.

Recovering the system without changing partitions

This option is not available on PCV-RX203.

To recover the system without changing partitions, proceed as follows:

- 1 Press **C** to keep your current partitions.
This is the recommended option if you do not need to modify the partition sizes and if you want to restore your C: drive while keeping the data on your D: drive untouched.
- 2 Press **G** to proceed with the system recovery.
- 3 Follow the instructions on the screen.
- 4 When the recovery process is finished, remove the product recovery CD-ROM from the drive.
- 5 Press any key to restart your computer.

Recovering the system with modified partition sizes

This option is not available on PCV-RX203.

To recover the system with modified partition sizes, proceed as follows:

- 1 Press **P** to modify partitions on your computer.
Select this option only if you need to change the sizes of your partitions.
- 2 On the next screen, press **Y** to confirm the deletion of the current partitions.
The next screen displays a selection of sizes for your new C: drive. According to the option you select, the recovery process will create 1 or 2 partitions on the hard disk.
- 3 Confirm your selection on the next screen.
- 4 Wait until the new partitions are created and the computer reboots.
- 5 Press **G** to proceed with the system recovery.
- 6 Follow the instructions on the screen.
- 7 When the recovery process is finished, remove the product recovery CD-ROM from the drive.

8 Press any key to restart your computer.

! Please note that this option will delete all existing data both on the C: and D: drives before starting the recovery.

Aborting the recovery process

The recovery process always warns you when the decision you are asked to take cannot be undone. Whenever possible, the recovery screens allow you either to go back to the previous screen, or to abort the recovery process.

Performing an application recovery

The application recovery utility allows you to reinstall individual applications. Reinstalling a program can fix the problems encountered if it does not correctly run anymore.

To perform an application recovery, proceed as follows:

- 1 Take the **final** product recovery CD-ROM.
- 2 Turn on your computer (using AC power only) and wait until Windows has booted up.
- 3 Insert the product recovery CD-ROM into the upper disc drive.
- 4 Open the drive through **My Computer** and click the **Apps** directory.
- 5 Open the directory that corresponds to the application you want to recover.
- 6 Double-click the **Setup** program.
- 7 Follow the instructions in the **Installer**.

 You must run the final product recovery CD-ROM from Windows.

The application does not run from DOS.


When performing an application recovery, you do not lose data on your hard disk.

In most cases, it is advised to uninstall an application before reinstalling it.

Using partitioned drives

In **My Computer** you may have noticed the availability of two drives (C: and D:). Your hard disk drive comes from the factory with 2 logical partitions. This does not mean that your computer contains two physical hard disks.

When you start using your computer, your C: drive contains all the files required by Windows® and other pre-installed software, while the D: drive is empty. The D: drive is the ideal storage space for all your documents and files, especially big ones like digital motion pictures captured by DVgate.

 Although you can perform a system recovery and change the partition settings in order to have one C: drive only, this option is not recommended for using video editing applications like DVgate.

To optimize data storage, use the C: drive to install new applications, and save all your documents and files to the D: drive. Moreover, doing so will prevent the loss of your data in the case you need to perform a system recovery.

Do not try to add, delete, or resize partitions unless you really need to. Changing partition settings might delete all your files on the hard disk.

If you need to perform a system recovery, but do not want to lose all the data stored on your hard disk, copy all the files you want to keep on the D: drive. During the system recovery process, choose to keep the current partition information. Doing so will keep your D: drive unchanged after the recovery process.

If you do need to change the size of your partitions, you can do so by performing a system recovery. In this case, it is important to be aware that all data on your hard disk will be deleted. If you need to keep existing files, be sure to back them up before performing the system recovery.