

# ***About the software on your Sony notebook***

**PCG-GRS515SP  
PCG-GRS515M**



## Read this first

### Notice

This product contains software owned by Sony and licensed by third parties. Use of such software is subject to the terms and conditions of licence agreements enclosed with this product. Software specifications are subject to change without notice and may not necessarily be identical to current retail versions. Updates and additions to software may require an additional charge. Subscriptions to online service providers may require a fee and credit card information. Financial services may require prior arrangements with participating financial institutions.

© 2002 Sony Corporation. All rights reserved.

Reproduction in whole or in part without permission is prohibited.

### End user software licence agreement

This End User Software Licence Agreement (the **EULA**) is a legal agreement between you and Sony Corporation (hereinafter referred to as **Sony**), a corporation organised under Japanese Law, the manufacturer of your **Sony** computer system (the **SONY HARDWARE**). Please read this EULA carefully before installing or using the software distributed together with this EULA (the **SONY SOFTWARE**). By installing or using the **SONY SOFTWARE**, you agree to be bound by the terms of this EULA. You may use the **SONY SOFTWARE** only in connection with the use of the **SONY HARDWARE**. **SONY SOFTWARE** is licensed; not sold.

Notwithstanding the foregoing, software distributed together with separate End User Software Licence Agreement (the **Third Party EULA**), including but not limited to Windows<sup>®</sup> operating system provided by Microsoft Corporation, shall be covered by the Third Party EULA.

If you do not agree to the terms of this EULA, please return the **SONY SOFTWARE** together with the **SONY HARDWARE** to the place where you obtained it.

**1. Licence.** This **SONY SOFTWARE** and the related documentation are licensed to you by **Sony**. This EULA allows you to use the **SONY SOFTWARE** for your personal use for a single **SONY HARDWARE** outside a network and only to make one copy of the **SONY SOFTWARE** in machine-readable form for back-up purposes only.

**2. Restrictions.** The SONY SOFTWARE contains copyrighted material and other proprietary material. In order to protect them, and except as permitted by applicable law, you may not decompile, reverse engineer or disassemble the SONY SOFTWARE in whole or in part. Except for the transfer of the SONY SOFTWARE together with the SONY HARDWARE and prior agreement of the recipient to be bound by the terms and conditions of this EULA, you may not sell or rent the SONY SOFTWARE and its copy to any third party.

**3. Limited Warranty.** Sony warrants the media on which the SONY SOFTWARE is recorded to be free from physical defects for a period of ninety (90) days from the date of purchase as evidenced by a copy of the receipt. During the applicable warranty period, **Sony** will replace free of charge such media proved to be defective, provided they are returned properly packaged to the place where you obtained it, together with your name, address, and proof of date of purchase. **Sony** will have no responsibility to replace media damaged by accident, abuse, or misapplication. The above limited warranty replaces all other representations, conditions and warranties, whether express or implied, by statute or otherwise and **Sony** expressly disclaims all other warranties and all conditions including, but not limited to, the implied warranties and/or conditions of satisfactory quality and fitness for a particular purpose. The terms of this limited warranty do not affect or prejudice your statutory rights as an ultimate consumer, neither do they limit or exclude any liability for death or personal injury caused by the negligence of **Sony**.

**4. Termination.** This EULA is effective until terminated. You may terminate this EULA at any time by destroying the SONY SOFTWARE, related documentation, and all copies thereof. This EULA will terminate immediately without notice from Sony, if you fail to comply with any provision of this EULA. Upon termination you must destroy the SONY SOFTWARE, related documentation, and all copies thereof.

**5. Governing Law.** This EULA shall be governed by and construed in accordance with the laws of Japan.

Should you have any questions concerning this EULA or this limited warranty, please refer to the Customer Service Guide on how to contact VAIO-Link.



## ENERGY STAR<sup>®</sup>

As an ENERGY STAR<sup>®</sup> Partner, **Sony** has determined that this product meets the ENERGY STAR<sup>®</sup> guidelines for energy efficiency. The **International ENERGY STAR<sup>®</sup> Office Equipment Program** is an international program that promotes energy saving through the use of computers and their office equipment. The program backs the development and dissemination of products with functions that effectively reduce energy consumption. It is an open system in which business proprietors can participate voluntarily. The targeted products are office equipment such as computers, displays, printers, facsimiles and copiers. Their standards and logos are uniform among participating nations.

ENERGY STAR is a U.S. registered mark.





## Trademarks

Sony, DigitalPrint, DVgate, i.LINK, Jog Dial Navigator, PowerPanel, MovieShaker, Smart Capture, Sony Notebook Setup, UI Design Selector, VAIO Edit Components, Sony Style Imaging, SonicStage, Memory Stick and the Memory Stick logo, VAIO and the VAIO logo are trademarks of Sony Corporation. Microsoft, Windows and the Windows logo, Windows Media and Outlook are trademarks or registered trademarks of U.S. Microsoft Corporation in the U.S. and other countries.

WinDVD is a trademark of InterVideo, Inc.

i.LINK is a trademark of Sony used only to designate that a product contains an IEEE1394-connection.

Adobe, Adobe Premiere, Adobe Photoshop Elements and Adobe Acrobat Reader are trademarks of Adobe Systems Incorporated.

QuickTime and the QuickTime logo are trademarks used under licence. QuickTime is registered in the U.S. and other countries.

RealPlayer is a trademark or registered trademark of RealNetworks, Inc. in the U.S. and other countries.

PowerPanel is a trademark of Phoenix Technologies Ltd.

Symantec Norton AntiVirus is a trademark of Symantec Corporation.

All other names of systems, products and services are trademarks of their respective owners. In the manual, the <sup>TM</sup> or <sup>®</sup> marks are not specified.

All other trademarks are trademarks of their respective owners.

Specifications are subject to change without notice.

## Registering your VAIO


It only takes a few moments to register your Sony VAIO computer.

By registering your computer, you can take advantage of Sony's commitment to quality customer support and receive the following benefits:

- ❑ **Club VAIO** – Online support, tutorials, tips and tricks, news, news forums, competitions, free downloads and software updates.
- ❑ **VAIO-Link** – If you are experiencing any problems with your computer, you can check the VAIO-Link website for a possible solution: <http://www.vaio-link.com>.
- ❑ **Guarantee** – Protect your investment. See the **Guarantee** sheet for the terms and conditions and refer to your **Troubleshooting Guide** for more information.

To register your Sony VAIO computer, proceed as follows:

- 1 Set up an Internet connection (see also **Configuring your modem (page 74)**).
- 2 Double-click the **VAIO Online Registration** icon on the desktop.  
You can also find the link on the **Start** menu.
- 3 Change your language if necessary and click **Next**.
- 4 Click **Register Now** and then click **Next**.  
This brings you to the website <https://registration.sonystyle-europe.com/vaio/registration.asp>.
- 5 Fill in your first and last name.  
The serial number of your computer is entered automatically.
- 6 Click **Submit**.
- 7 Enter your details as required and click **Submit**.  
Your VAIO is registered and a thank you screen appears.  
If you entered an email address, you will receive a confirmation email from Club VAIO.

 Once you have registered, you can access VAIO Online Registration at any time to update your details without filling in the survey.

## About the software on your computer

Your Sony computer is ready to help you work, play, learn, and communicate as soon as you turn it on. This section gives you an overview of what you can do with the software installed on your computer.

### Sony software

#### DigitalPrint



*Sony Electronics*

DigitalPrint is easy-to-use software designed to help you get the most enjoyment out of your photographs taken with a digital camera or taken from a CD, floppy disk or Memory Stick™. With DigitalPrint, you can easily load photos into your computer, create photo albums, labels and make prints.

#### DVgate



*Sony Electronics*

DVgate is a kit of 3 complementary applications: DVgate Motion, DVgate Still, and DVgate Assemble. This collection makes it easy to select and edit digital video clips, then bring them together into a professional-looking home video. Use i.LINK™ to connect your digital video camera, and the computer operates as an editing desk that can capture, preview, cut and assemble your selection and save the sequences in AVI or MPEG 1 & 2 formats. DVgate Still displays digital video images sent from a digital videocassette recorder or a digital video camera recorder (only possible if you have DV In/Out on your camera or at least a DV Out for DV Gate Still), and saves them as graphic files on your hard drive.




## ISP Selector



### Sony Electronics

With the ISP Selector you can easily install the Internet Service Provider you want to use. Just choose your country and your language in the drop-down lists and the available providers appear. Click the **Install** button next to the ISP and the installation begins.

 Once you have selected your country, you can only set up ISPs for that country.

## Jog Dial Navigator



### Sony Electronics

In this application, you can select Sony applications, or others, that you want the Jog Dial™ to pilot; you can also configure the Jog Dial Navigator to start any application, establish a dial-up connection, or read an e-mail, simply by turning and pressing the Jog Dial™.

## MovieShaker



### Sony Electronics

MovieShaker® creates personal movies - complete with transitions, special effects, background music, and text. All you do is import your clips, pick the tune you want and MovieShaker® does the rest. You can also choose to take control and produce your very own movie. You choose the exact clips order, special effects, and transitions. You can also import your own music and MovieShaker® will automatically match the length of the song to the length of your movie.



## PowerPanel



### *Sony Electronics*

The PowerPanel utility controls the power management of your computer and provides key information about system activity and battery life. Automatic power management selects the most appropriate profile, depending on the application you are working with and the conditions of use.

## Smart Capture



### *Sony Electronics*

Connect a digital camera to your computer to shoot still images and video clips, which you can view or send by e-mail. The Smart Capture Finder displays images from the camera and allows you to adjust the settings or create effects. Smart Capture enables you to capture images via i.LINK™ compatible devices or create a panorama picture using the panorama assist function.

## SonicStage



### *Sony Electronics*

SonicStage is software using the OpenMG technology, a copyright protection technology developed by Sony Corporation and designed to allow recording and playback of digital music data on a personal computer. Once the data is encrypted and recorded onto the hard disk, SonicStage technology allows it to be played back on the PC but prevents unauthorised distribution. The purpose of SonicStage technology is to create an environment in which larger quantities of high-quality music can be distributed without subsequent unauthorised distribution of the music files.

The SonicStage software encrypts and manages music files either downloaded to a personal computer by using the EMD services or adopted (or created) from your own CD or the Internet.



## Sony Notebook Setup



### Sony Electronics

Use Sony Notebook Setup to consult system information, specify preferences for system behaviour, and set up a power-on password for your Sony computer.

## Sony Style Imaging (shortcut on the desktop)



### Sony Electronics

Sony Style Imaging is an easy way to share your digital pictures and videos with family and friends. Use Sony Style Imaging with the MovieShaker software to make the most of your images and movies. When you sign up as a Sony Style Imaging member, you can store your pictures and even order prints.

Go to the following website to join for FREE:

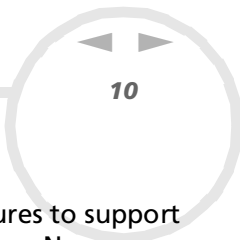
<http://www.sonystyle-imaging.com>

## UI Design Selector



### Sony Electronics

You can change the window design of the Sony software compatible with UI Design Selector.



## VAIO Edit Components\*\*

Designed as a plug-in for Adobe® Premiere®, VAIO Edit Components includes special features to support your i.LINK™-DV devices, so you can produce superior quality home movies even after editing. Now you can control the DV device from your computer, import and edit the movie, and then export it back to the DV device.

PCG-GRS515M only: To be able to use the Sony software VAIO Edit Components, you must first install Adobe® Premiere® version 6.0\* on your computer.

\* available for purchase.

\*\* PCG-GRS515M: available on the application CD-ROM / PCG-GRS515SP: available on your hard disk.

## Product Recovery CD-ROMs



### Sony Corporation

The Product Recovery CD-ROMs allow you to reinstall the system, the software shipped with your computer and the bundled device drivers if they are corrupted or accidentally erased. Reinstalling an individual device driver may correct a problem you are experiencing with your computer, without you having to recover the entire system.

! You can only use the Recovery CD-ROMs on the Sony computer you purchased, and not on any other Sony PC or other manufacturer's PC.

## Operating system and other pre-installed software

### Windows® XP Professional (PCG-GRS515SP)



#### Microsoft Corporation

Built on the proven Windows® 2000 operating system, Windows® XP Professional delivers a reliable foundation you can count on to keep your computer up and running when you need it most. Not only is the operating system more reliable, it also offers features that make it much faster and easier to recover from system problems.

From its fresh, new look to its more intuitive, task-based design, Windows® XP Professional will make your computing experience easier than it's ever been. With support for the latest security standards and enhanced Firewall protection, Windows® XP Professional also keeps your data secure and maintains your privacy.

For questions and technical assistance, go online to:

<http://support.microsoft.com/directory>

### Windows® XP Home Edition (PCG-GRS515M)



#### Microsoft Corporation

Microsoft® Windows® XP Home Edition allows you to enjoy a new level of reliability that helps your computer stay up and running. If anything does go wrong, you can quickly roll back to the state your system was in when all was well. The new, simpler visual design lets you use your computer the way you want. If you share a computer with other users, you can each enjoy your own personal preferences because this Windows® operating system enables your computer to handle multiple activities at the same time. Windows® XP Home Edition automatically shields your computer from unauthorised access when you are on the Internet.

For questions and technical assistance, go online to:

<http://support.microsoft.com/directory>

## Internet Explorer 6.0



*Microsoft Corporation*

Internet Explorer is the Microsoft Internet browser allowing you to surf the World Wide Web. The Setup Wizard configures your computer to connect automatically to your service provider. A full e-mail package enables you to send and receive mail - including attached files - across the Internet. NetMeeting, Outlook Express and Microsoft Chat are just some of the components bundled with Internet Explorer 6.0. Internet Explorer 6.0 also includes 128-bit encryption, the highest possible level of protection for all your Internet communications, including credit card use and financial transactions. A complete online tutorial helps new users become comfortable using the Internet.

For questions and technical assistance, go online to:

<http://support.microsoft.com/directory>

## Adobe® Acrobat® Reader 5.0



*Adobe Systems Incorporated*

Acrobat® Reader software allows you to view, navigate, and print electronic documents in Adobe Portable Document Format (PDF), an open file format that is intended to preserve the conformity of documents created on all major computer platforms. Once Acrobat® Reader is installed, you can open and view PDF files from within your Web browser by clicking a PDF file embedded in an HTML file. You quickly see the first page while the rest of the document is being downloaded.

For questions and technical assistance, go online to:

<http://www.adobe.com>

## Adobe® Photoshop® Elements



*Adobe Systems Incorporated*

Adobe® Photoshop® Elements software introduces the next generation of image editing with powerful new features that offer something for every user. Delivering the broadest and most productive toolset available, Photoshop® Elements helps you explore your creativity, work at peak efficiency, and achieve the highest quality results across all image media.

For questions and technical assistance, go online to:

<http://www.adobe.com>

## Adobe® Premiere® 6 LE (PCG-GRS515SP only)



*Adobe Systems Incorporated*

Complementary with DVgate Motion, Adobe® Premiere® lets you capture, record, create and edit movies with video, sound, animations, photographs, drawings, text and other material.

This stunningly simple and powerful professional video-editing tool comfortably closes the DV to Web gap. Different tools, including various effects and transitions, help you to prepare your images for editing on tape or CD-ROM.

Adobe® Premiere® combines professional video editing capabilities and high quality output in a product that's easy to use and versatile.

For questions and technical assistance, go online to:

<http://www.adobe.com>

## QuickTime 5.0



### Apple

QuickTime is the Apple technology that makes video, sound, music, 3D and virtual reality come alive for your Internet browser and Windows.

For further information, see the website at:

<http://www.apple.com/quicktime>

## RealPlayer



### RealNetworks

RealPlayer is the RealNetworks video and audio player, which lets you access 2,500 radio stations featuring music, news and sports.

For further information, see the website at:

<http://www.real.com>

## Symantec Norton AntiVirus (as setup on the hard drive)



### Symantec

This software package includes a 90-day free subscription to virus definition updates.

With Norton AntiVirus, you can scan files, folders, or entire drives for viruses, and quarantine infected files for submission to the Symantec AntiVirus Research Centre (SARC). Files submitted to SARC are analysed and the results are reported automatically within seven days. When you configure Norton AntiVirus adequately, your computer is safe. Norton AntiVirus can automatically check boot records for viruses at system startup, check programs for viruses at the time you use them, scan all local hard drives for viruses once per week, and monitor your computer for any activity that might indicate the work of a virus in action. It can also scan files you download from the Internet and check floppy disks for boot viruses when you use them.

You must launch the Norton AntiVirus installation, and you will then be prompted to update the virus definitions. This is normal as new viruses will have come out since your VAIO left the factory. For more information, see the online help files and the website at:

<http://www.symantec.com/techsupp>

## VAIO Web Phone



*CallServe Communications Ltd.*

Once you have purchased the USB telephone, this Internet Telephone enables you to make telephone calls from your PC via the Internet to any other phone. You can make international calls at significantly lower prices and make phone calls and surf the web at the same time - on just one phone line. For more information, see the online help files and the website at:

<http://www.callserve.com/EN/help/index.asp>

## WinDVD



*InterVideo, Inc.*

InterVideo Inc.'s WinDVD is a simple-to-use DVD player. WinDVD combines all the features you would expect to find on a standard consumer DVD player, in addition to some very advanced functionalities, full precision video decoding, a choice of user interfaces, and video display options. You can play DVD movies, interactive DVD titles, MPEG video content, video and audio CDs. WinDVD automatically determines the type of disc in the DVD drive and uses the correct playback method.

For questions and technical assistance, go online to:

<http://www.intervideo.com>



## Using Video software

The following video software applications are installed on your VAIO:

- ❑ DVgate ([page 16](#))
- ❑ MovieShaker ([page 32](#))
- ❑ Smart Capture ([page 38](#))


### Using DVgate

DVgate is a software application that enables you to capture and then edit images taken with digital video devices (DV devices), such as digital video camera recorders, on your personal computer. It also gives you the ability to output the edited material for recording on a DV device.

With DVgate, you can easily perform image editing with your computer and a DV device.

DVgate consists of 3 applications:

- ❑ **DVgate Motion;**
- ❑ **DVgate Still;**
- ❑ **DVgate Assemble.**

 Depending on the computer settings, frames may be lost during video capture and frame duplication when recording edited video. Please make sure you configure your computer according to the recommended settings to prevent this from happening. To configure your computer to use DVgate, refer to the Online help of DVgate.



## Using DVgate Motion

With DVgate Motion you can capture video and record edited videos on a DV device.

### ❑ **Capturing video:**

You can **automatically** or **manually** capture any scene or portion of the images recorded on a DV device, such as a digital video camera recorder. What is more, you can specify the exact scenes that you want to capture while watching the tape playback on the monitor. You can then choose to save the selected scenes as separate files or as one file.

### ❑ **Recording edited video on a DV device**

You can record the edited video on tape using a DV device, such as a digital video camera recorder\*, connected to the computer. With DVgate, you are not limited to recording single clips, but you can record a series of clips on the DV device at one time.

To launch DVgate Motion, proceed as follows:

- 1 Connect the camera to the computer with the i.LINK™ cable and turn on the camera.
- 2 Click **Start, All Programs, DVgate, DVgate Motion. DVgate Motion** and the **Monitor** windows appear.

\* The digital video camera recorder must have a DV-IN connector.

## Capturing videos

You can automatically or manually import videos onto your computer.


To automatically import videos onto your computer, proceed as follows:

- 1 Launch **DVgate Motion**.
- 2 Click the **down** arrow and select **Import-Auto** from the **Mode** drop-down list. Use the DVgate camera controls buttons to play, rewind or fast forward the tape to the selected time code to begin capturing.



- 3 Press **Play** to start the video.  
The video begins to play in the **Monitor** window.
- 4 Click **Mark** to mark the beginning of the first segment.  
The first frame of the segment to be captured, is displayed in the **In/Out list** window.  
Click **Mark** again to mark the end of the segment to capture.  
The last frame of the segment to be captured, is displayed in the **In/Out list** window.  
Continue to mark as many segments as you want.
- 5 Click **Capture** to import the selected video segment or click **Capture All** to import them all at once.  
The **Save as a file** window appears.
- 6 Select the location to save the file.
- 7 Click the **Save** button.  
DVgate captures the segments.  
The **Capturing complete** message appears.



- 8 Click **OK** in the **DVgate Motion** window to finish.  
Information about the capturing process is displayed in the **Report** window.
  - 9 Click **OK**.
  - 10 Exit DVgate Motion.  
The **Dvmotion2** window appears on the screen.  
You can then save the **In/Out list**, which allows you to capture the same video sequences later on, or change the In/Out settings.
-  Make sure that the camera is in Video Tape Recorder mode (VTR) when capturing or playing back video from or to a tape.  
If you want to manually import video onto your computer, refer to the DVgate online help file.

### *Recording edited videos on a DV device*

To record edited videos on a DV device, proceed as follows:

- 1 Adjust the recording correction values.
- 2 Add files to the Record List.
- 3 Record remotely or manually the video on the DV device.

### *Adjusting the recording correction values*

To ensure accuracy in the recording, you can specify recording correction values. Adjustment of the recording correction values is especially important when performing splice recording. You can choose to specify the values yourself or to have them automatically adjusted by using the automatic calibration feature. The values generated by the automatic calibration feature are usually correct.

To automatically adjust the recording correction values, proceed as follows:

- 1 Launch DVgate Motion.
- 2 Click the **down** arrow and select **Export - Auto** from the **Mode** drop-down list.

- 3 Select **Adjust on Recording...** from the **Settings** menu.  
The **Adjust on Recording** dialog box appears.
- 4 Click the **AutoAdjust** button.  
DVgate Motion activates the connected DV device and automatically finds the adjustment values.
- 5 Click **OK**.


 To manually adjust the recording correction values, refer to the DVgate online help file.

### *Adding files to the Record List*

To add files to the Record List, proceed as follows:

- 1 Launch **DVgate Motion**.
- 2 Click **Add** in the **DVgate Motion – AVI file list**.  
The **Add** dialog box appears.
- 3 Select a file and click **Open**.  
The specified file is added and the serial number, first and last images, time code, file length and file name are displayed.

★ DVgateMotion adds all serial numbered files with the same name if you select **Add all divided files saved with the same name**. Serial numbered files are created when you specify to save files as multiple files in DVgate Motion and DVgate Assemble.

 All newly added files are appended to the end of the list.

You can drag multiple files at one time; however, the order in which they are added is unpredictable.

You can record AVI files with different sound modes on a DV device, but about one second of no sound (depending on the DV device) may occur at the point where the sound modes change.

You can only add AVI files using DV Codec as video compression; MPEG files are not supported.

When recording a video sequence, make sure that all images are saved in the same mode. Recording in different modes might cause sound or image distortions during playback. After adding the files you want to the Record List, you can still change the order of the files, add or delete files.

After adding the files to the Record List, you can still change the order of the files, add or delete files.

To change the order of the files in the Record List, proceed as follows:


- 1 Click the file you want to move while holding down the mouse button.
- 2 Drag the file to the appropriate position and then release the mouse button.

To remove a file from the Record List, proceed as follows:

- 1 Click the file you want to remove.
- 2 Click **Delete**.

The removed file is filled by the subsequent file and the files are renumbered.

Click **Delete All** when to remove all files.

 You can select multiple AVI or still picture files from the Record List by clicking them while holding down the <Shift> or <Ctrl> key.

When you move multiple files, they are all moved together.

You can undo changes by choosing **Undo** from the **Edit** menu immediately after inserting, moving or deleting (a) file(s).

You can save a **Record List** for future use. Record List files can only be used in DVgate Motion.

To preview a clip, proceed as follows:


- 1 Select the file you want to preview in the **DVgate Motion – AVI file list** window.
- 2 Click **Preview**.

The **Monitor** window and the **Preview** window appear.

The **Monitor** window shows the first frame of the file.

Click on the **Previous File** button or on the **Next File** button to select the file you want to preview.

Click **Preview All** to preview all the files shown in the list.


 **Previous File** and **Next File** are buttons for moving the preview from one selected file to another. They are not designed for navigation purposes within the list. Consequently, you cannot click on them when only one file is selected. When you select only one file, **Previous File** and **Next File** do not function.

### Recording on the DV device

You can automatically or manually export videos from your computer to a DV device.

To automatically export videos from your computer to a DV device, proceed as follows:

- 1 Connect the camera to the computer with the i.LINK™ cable and turn on the camera.
  - 2 Launch **DVgate Motion**.
  - 3 Click the **down** arrow and select **Export-Auto** from the **Mode** drop-down list.
  - 4 Click the **Add** button in the **DVgate Motion - AVI file list** window and select the video file you want to export.
  - 5 Click **Record** or **Record All**.  
The **Output** dialog box appears.
  - 6 Select the **Add blank image** option button.
    - You can add blank frame(s) during recording if you select the **Append** option button in the **Output** dialog box.  
Blank frame(s) can be placed in the following locations:  
**Head:** A blank image is placed before the start of the video sequence during recording.  
**Tail:** A blank image is placed after the end of the video sequence during recording.  
**Both:** Blank images are placed before the start and after the end of the video sequence during recording.
    - You can specify the length of a blank image by entering the number of frames in the **Length** box in the **Output** dialog box.
  - 7 Click **OK**.  
The **Output** dialog box closes and recording starts.  
Video sequences are recorded on the DV device in the order in which they are arranged in the **Record List**.
- ★ Clicking **Record All** will send all the video files shown in the **Record List** to the connected device. Clicking **Record** will send only the video files selected from the **Record List** to the connected device.

 Even if you specify not to add blank frames, several blank frames are always placed at the end of the recorded segment regardless of the settings. This is to prevent image noise from being recorded when recording stops.

Do not quit or log off from Windows<sup>®</sup> while recording. Otherwise, recording will fail.

Disable the screen saver in Windows<sup>®</sup>.

Do not start other applications or move any active window while recording.

Recording from the very beginning of the tape may not be successful if you record by controlling the video device through DVgate Motion.

Do not turn the power switch on the digital video camera recorder to **Camera** or turn it off while DVgate Motion is recording. Never switch the input sources when recording on a digital videocassette recorder as this might prevent recording.

If you want to export manually videos from your computer to a DV device, refer to the DVgate online help file.

## Using DVgate Still

DVgate Still is an application that displays digital video images sent from DV devices such as a digital videocassette recorder or a digital video camera recorder and that captures them as still pictures.

The following functions are featured:

- Control the connected DV device and display a video image on the screen of your VAIO.
- Capture 30 frames of still pictures in total with respectively 15 frames in the forward and backward directions.
- Capture only one frame of a still picture.
- Save a captured still picture in BMP, JPEG, GIF or DVF format.

 The sound recorded with the image, is not played.




## Capturing pictures

There are two capture modes in DVgate Still: the **Continuous Capture** mode and the **Single Frame Capture** mode.


### □ **Continuous Capture mode:**

If you capture pictures during **Play** mode, you can capture 30 frames of still pictures in total with respectively 15 frames in the forward and backward directions. All still pictures already captured, are lost. If you capture during **Pause** mode, you can capture only one frame of a still picture.

 Immediately after you capture during **Play** mode in **Continuous Capture** mode, the DV device pauses.

### □ **Single Frame Capture mode:**


You can capture one frame of a still picture. The captured result is the same even if you capture during **Play** or **Pause** mode.

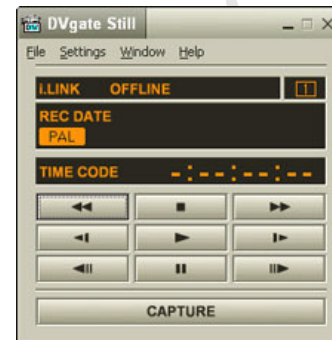
 Capturing 30 frames in **Continuous Capture** mode replaces all 30 frames. Capturing only one frame overwrites the first frame of the still picture, capturing the next frame overwrites the second frame, and so on.

To toggle between **Continuous Capture** mode and **Single Frame Capture** mode, proceed as follows:

- 1 Click **Settings** in the DVgate Still window.
- 2 Choose **Capture...**  
The **Capture Settings** window appears.
- 3 Select the **Capture frames continuously** option button to capture in **Continuous Capture** mode.  
Clear the **Capture frames continuously** option button to capture in **Single Frame Capture** mode.

To capture pictures, proceed as follows:

- 1 Connect the DV device to your computer.
  - 2 Launch **DVgate Still (Start/All Programs/DVgate/DVgate Still)**.  
The **DVgate Still** window appears.
  - 3 Set the DV device to the **Play** or **Pause** mode.  
The video image appears in the **Monitor** window.
  - 4 Click the **Capture** button.  
The video image in the **Monitor** window is being captured.
-  Dragging the slider in the **Capture** window to the left or right lets you display the still picture before or after the current one.
- ! If you exit DVgate Still without saving the captured still picture, it is cleared.
  - ! Even if you attempt to capture continuous pictures, you may not be able to capture some frames. In this case, exit all applications other than DVgate Still and then retry to capture them.

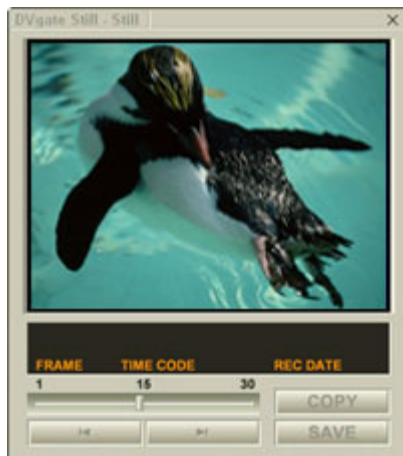


## *Saving the captured pictures*

You can save the still pictures displayed in the **DVgate Still - Still** window in either one of the following formats: BMP, JPG, GIF or DVF.

To save the captured pictures, proceed as follows:

- 1 Launch **DVgate Still** and capture images.
- 2 In the **DVgate Still - Still** window, select a still picture you want to save.



- 3 Click the **Save** button.  
The **Save As** dialog box appears.  
Use the **Location to Save** drop-down list to select a folder.  
Select a file format from the **File Format** drop-down list.
- 4 Click **Save**.  
The captured picture is saved.

## Using DVgate Assemble

DVgate Assemble enables you to edit video files and still image files captured with DVgate Motion and DVgate Still. Afterwards you can splice them together to form one single file. You can save the resulting spliced video sequences as AVI, MPEG1, or MPEG2\* format files.

To launch DVgate Assemble, proceed as follows:

- 1 Click **Start**.
- 2 Point to **All Programs, DVgate** and then to **DVgate Assemble**.  
The **DVgate Assemble** main window appears.

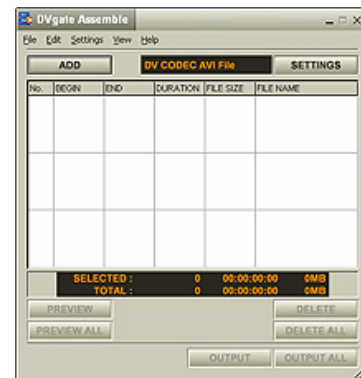
\* Depending on your model.

### Creating an Assemble List


You can create an **Assemble List** with files you want to splice together. Afterwards you can always edit the Assemble List by changing the order of the files and adding or deleting files.

To add files to an Assemble List, proceed as follows:

- 1 Launch **DVgate Assemble**.
- 2 Click the **Add** button.  
The **Add** dialog box appears.
- 3 Choose **AVI file** in the **Files of type** drop-down box.  
If you select **Add all divided files saved with the same name**, DVgate Assemble will add all serial numbered files with the same name to the list. Serial numbered files are files that are created when DVgate Motion saves files that are split and applies consecutive numbers to them. The numbers of the split files have 4 digits and increase one unit at a time starting with 0001.



- 4 Select a file and click **Open**.  
The AVI file is added to the list.

 Imported files are added at the end of the Assemble List.

You can only add video files in AVI (DV CODEC) format, and still image files in BMP, JPEG, and GIF formats. Please see the help files for information on converting non-compatible AVI files.

When you add a still image file (BMP, JPEG, or GIF), the number of frames, converted size, and size conversion mode are shown.

You can save an Assemble List for future use. Assemble List files can only be used in DVgate Assemble.

### *Editing AVI files*

You can edit the AVI files in the Assemble List for the exact scenes you want to use. For example, there is no need to recapture files even if you only want to use one particular scene from a longer video sequence originally captured with DVgate Motion. Note that the process of removing the exact scene is only enabled when one AVI file is selected from the Assemble List. However, this command is disabled when more than one file are selected.

To edit the AVI files in the Assemble List for the exact scenes you want to use, proceed as follows:

- 1 Launch **DVgate Assemble**.
- 2 Select the AVI file you want to edit from the **Assemble List**.
- 3 Choose **Edit a clip...** from the **Edit** menu.  
The **DVgate Assemble - Clip** dialog box appears.
- 4 Click the **Preview** button.  
The video sequence of the selected file is played back.  
You can move the playback position to the **Begin** point or the **End** point by clicking the **Begin** or **End** point of the image.  
Click the **Begin** button when you see the scene to be used as the **Begin** point.

The **Begin** point image and the time code appear in the lower part of the dialog box. Click the **End** button when you see the scene to be used as the **End** point.

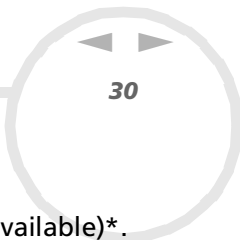
The **End** point image and the time code appear in the lower part of the dialog box.

- 5 Click **OK**.  
The AVI file is edited.

### *Combining still images with video images*

To combine still images with video images, proceed as follows:

- 1 Launch **DVgate Assemble**.
- 2 Click the **Add** button.  
The **Add** dialog box appears.
- 3 Select the image file type from the **Files of type** drop-down list.
- 4 Select your image file and click **Open**.  
The image is added to the **Assemble List**.
- 5 Choose **Edit a clip...** from the **Edit** menu in the main window.  
The **DVgate Assemble - Clip** dialog box appears.
- 6 Enter the insertion time in seconds or frames.
- 7 Turn the **Wide TV mode** on or off.
- 8 Select the screen size.
- 9 Adjust the height and width of still images when they are output:
  - Full size:** Enlarges the screen size to the full monitor size. The aspect ratio may change with this selection.
  - Original Size:** Retains the original size of the image, without reduction or enlargement.
  - Full size using aspect ratio as saved:** Enlarges the screen size to the maximum without changing the aspect ratio.




- 10 Click the **Settings** button.  
The **Settings** window appears.
- 11 Select the final format of the combined file, choosing from AVI, MPEG1 or MPEG2 (if available)\*.
- 12 Click **OK**.  
The **Assemble List** appears.
- 13 Click **OK**.  
The still and video images are combined.

\* Choosing MPEG1 as the format will reduce the size of the file considerably.

## *Saving the edited video*

To save an edited video sequence, proceed as follows:

- 1 Click the **Output** or the **Output All** button.  
The **Save As** dialog box appears.  
Information on the output file and the amount of free disk space is shown in the lower part of the **Save As** dialog box.
- 2 Select the location where you want to save the file and type the name of the file in the **File name** text box.
- 3 Click **Save**.
- 4 The **Outputting as an AVI file** dialog box appears and splicing begins.
- 5 The **DVassemble** window appears and displays the **Exporting/Save to an AVI file complete** message. The set time and the size that the file is split into are displayed when outputting an AVI file.
- 6 Click **OK**.  
The edited video is saved.

 When you click the **Output** button, only the files on the Assemble List that have been selected, are connected and output as a file. Clicking **Output All** means that all the files on the Assemble List are connected and output.

The file name is the name that was entered in the **Save As** dialog box. A 4-digit serial number is attached to the file name, e.g., test001-0001.avi, then test001-0002.avi, test001-0003.avi.

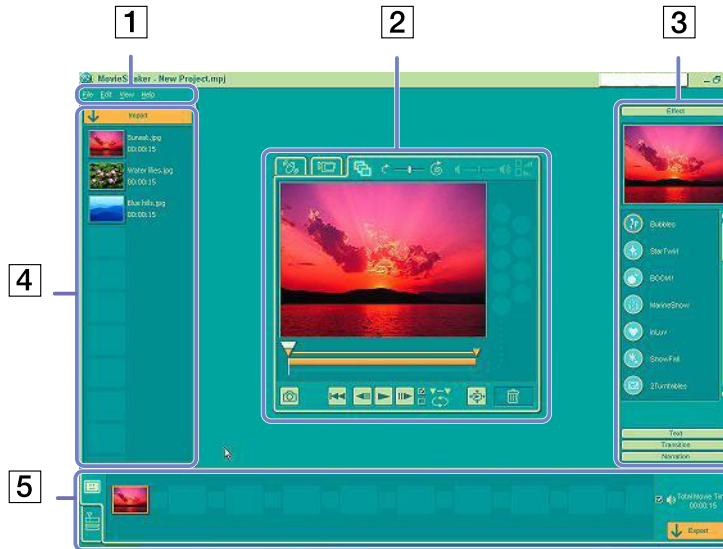


## Using MovieShaker

MovieShaker can be used to create fun and innovative movies without any knowledge of film editing. In a few steps, motion pictures can be combined with special effects, still images (pictures), and music files and then saved in a format most computers can play.

To open MovieShaker, proceed as follows:

- 1 Click the **Start** button on the **Windows®** taskbar.
- 2 Point to **All Programs** and then **MovieShaker**.
- 3 Click **MovieShaker**.





1.	Menu bar	Shows MovieShaker menus.
2.	Monitor panel	<p>Contains the <b>Shake</b>, <b>Capture</b>, and <b>Edit tray</b>. Select a tray by clicking the <b>Shake</b>, <b>Capture</b>, or <b>Edit</b> tab. The <b>Shake</b> tray is for creating a scene of approximately 30 seconds long including background music, using clips on the <b>Clip tray</b> at random.</p> <p>The <b>Capture tray</b> is provided for capturing images directly from the DV device or MICROMV device connected to your computer, and importing them into the <b>Clip tray</b>. The monitor displays the images recorded on the videotapes of the DV device or MICROMV device.</p> <p>The <b>Edit tray</b> is for processing scenes. Click a scene on the <b>Product tray</b>, then it is displayed on the <b>Edit tray</b>. You can add an effect to the scene by dragging the effect from the <b>Effect tray</b> and/or the <b>Text tray</b> and dropping it on the <b>Edit tray</b>.</p>
3.	Tool panel	<p>In the <b>Tool</b> panel, you will find the <b>Effect</b>, <b>Text</b>, <b>Transition</b>, <b>Narration</b> and <b>Index tray</b>. Select a tray by clicking the <b>Effect</b>, <b>Text</b>, <b>Transition</b>, or <b>Narration</b> button. Only when a MICROMV device has been connected to your computer and <b>MICROMV Device</b> has been selected from the <b>Device</b> menu, the Index tray appears while <b>the Capture tray</b> is displayed on the monitor panel.</p> <p>The <b>Effect</b> tray contains various effects to be applied to a scene.</p> <p>The <b>Text</b> tray provides a tool for creating a text effect to be applied to a scene.</p> <p>The <b>Transition</b> tray contains various transition effects to be inserted between scenes.</p> <p>The <b>Narration</b> tray provides a tool for recording narration to be inserted into a movie.</p> <p>The <b>Index</b> tray provides a tool for capturing images from a MICROMV device and imports them into the Clip tray.</p>
4.	Clip tray	<p>The <b>Clip</b> tray is provided for placing clips to be processed with MovieShaker. It can contain a movie file, still image and/or sound files.</p>
5.	Product tray	<p>The <b>Product</b> tray is where you arrange clips to make a movie. In the <b>Product</b> tray, you will find the <b>Storyboard Display</b> and the <b>Timeline Display</b>.</p> <p>On the <b>Storyboard</b>, you can easily arrange scenes and transitions.</p> <p>On the <b>Timeline</b>, you can arrange scenes, transitions, background music, and narration, and make fine adjustments to the starting/ending points and duration of scenes, transitions, background music, and narration.</p>


## Importing images and sound clips

Before you can create a movie, you need to import the images and sound clips you want to use in your movie.

To import images and sound clips, proceed as follows:

- 1 Click the **File import** button .  
The **Import** dialog box appears.
- 2 Select the file you want to add.
- 3 Click **Open**.  
The file is added to the **Clip tray**.




 Importing files over 75 seconds in length may cause MovieShaker to stop responding.

To remove a clip from the Clip tray, drag it from the Clip tray and drop it on the trash icon . This only removes the clip from the tray, the original file is not deleted.

## Creating a movie

After adding clip(s) to the **Clip tray**, you can create a short movie using the **Shaker** feature. Shaker randomly selects clips from the **Clip tray** to create a 30-second scene.


To create a movie, proceed as follows:

- 1 Click the **Shake** tab .
- 2 Select a mood by clicking a face in the **Shaker tray** .
- 3 Click the **Shake** button .  
A thirty-second scene is automatically generated.

To preview the created movie, proceed as follows:

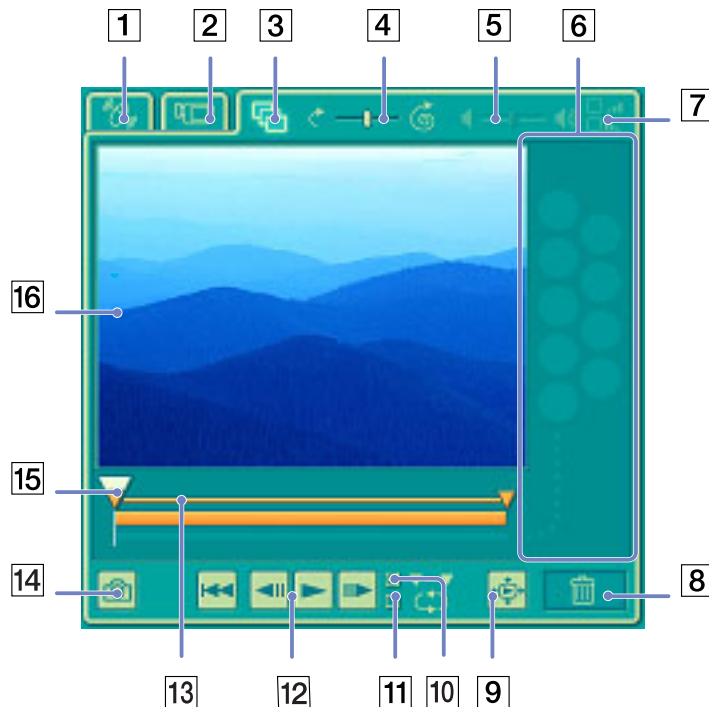
Press **Play** .



-  Scenes created with Shaker begin with a black frame. After processing, they are placed in the first available slot on the Product tray.  
Limit the number of scenes in the Product tray to 5 or less.  
MovieShaker may stop responding if there are too many scenes in the Product tray.

## Editing clips and scenes

You can edit your movie by adding effects and text, adjusting the colour and contrast, and modifying the length of the clip.



1.	Shake tab
2.	Capture tab
3.	Edit tab
4.	Speed control slider
5.	Volume control slider
6.	Effect palette
7.	Fade-in, fade-out
8.	Trash
9.	Full-screen preview button
10.	Play trimming range
11.	Repeat-play
12.	Play control buttons
13.	Trimming range
14.	Save as still image button
15.	Time adjustment
16.	Monitor

To edit clips and scenes, proceed as follows:

- 1 Double-click the clip in the **Clip tray** to move it to the **Monitor Panel**.
- 2 Select the **Effect** tab from the **Tool Panel**.
- 3 Drag and drop the effect you want to add from the **Effect tray** to the **Edit tray monitor**.


 To preview an effect, click the effect in the **Effect tray** in the **Working Panel** monitor.

For instructions on adjusting effect duration and replaying clips or scenes, consult the online Help-files.

## Saving a movie

You can save or export your final movie products. You can preview and check them before saving them. Your final movie products can be saved as files, exported to a DV device/MICROMV device\*.

To save your movie, proceed as follows:

- 1 Click the **Export** button .  
The **Export** dialog box appears.
- 2 Select the format in which you want the document to be saved.
- 3 Click **Next**.
- 4 Select the folder in which you want to save the file.
- 5 Name the file.
- 6 Click **Save**.  
Your movie is saved.

 Exporting movies may take a long time to complete. Saving movies with DV (Digital Video) will provide better quality than Quick-Save, but will take longer.

MovieShaker can play AVI files up to 65 MB in size.

For DV playback and smooth video playback, the following resolution/refresh rates are recommended: 1024x768/75 Hz or lower.

\* Depending on your model.


## Using Smart Capture

You can use Smart Capture to shoot still images and record video clips from a digital camera connected to your computer.

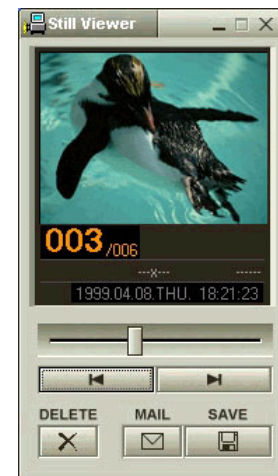
### Capturing still images

You can capture still images from i.LINK™ compatible devices.

To capture still images, proceed as follows:

- 1 Connect an i.LINK™ compatible device to your computer.
- 2 Launch **Smart Capture** from the **Start** menu, in **All Programs / Smart Capture / Smart Capture**. The **Finder** window appears, displaying the image of the subject.
- 3 Adjust the focus on the subject.
- 4 Click the **Capture** button in the **Smart Capture** window. The **Still Viewer** window appears. The image you have captured, is displayed in the **Still Image Display** area.
- 5 To end **Smart Capture** click the  button in the top right corner of the window.


 Make sure a camera is plugged to the i.LINK™ connector.




## Displaying captured images in Still Viewer

To display captured images in **Still Viewer**, proceed as follows:

From the **Start** menu, select **All Programs / Smart Capture** and click **Still Viewer**. You can display, save or delete your images or send them by e-mail.

To end **Still Viewer**, click the  button.

 You can capture still images in the following sizes: 640 x 480, 320 x 240, 160 x 120 and 80 x 60 pixels.

When capturing a small resolution image (i.e., 80 x 60 pixels), the displayed image on the **Finder** window may appear blurred.



A gap may appear when a rapid-moving object is displayed. This is not a malfunction.


If you start Smart Capture while no camera is plugged, the Smart Capture **Finder** screen will appear blue.

You can capture still images and video clips from a digital video camera using **Smart Capture**.

## Sending still images via e-mail

To send still images via e-mail, proceed as follows:

- 1 Launch **Still Viewer**.
- 2 Select the still image you want to send via e-mail, using  or .
- 3 Click **Mail**.  
Your e-mail window appears with the selected file attached to your message.
- 4 Send the e-mail.


 You need to set up MAPI (Messaging Application Program Interface) when using the e-mail software. MAPI is a Microsoft® Windows program interface that enables you to send e-mails from within a Windows application and to attach the document you are working on to the e-mail note.




## Shooting video clips

With a video camera connected to your computer you can use **Smart Capture** to capture video clips, as well as play them or send them via e-mail.

To capture video clips, proceed as follows:

- 1 Launch **Smart Capture**.
- 2 Select **Net Movie** using the **Switch Capture Mode** button.  
The image appears in the **Finder**.
- 3 Turn the camera towards the subject.
- 4 Adjust the image.
- 5 Click the **Capture** button to shoot a video clip (you can shoot up to 120 seconds, according to the settings you chose in the **Recording options** section).
- 6 Click the **Capture** button when finished.  
The **Movie Player** window appears, it contains the captured video clip.
- 7 Click ►| to playback the images. Click || to pause, ■ to stop playback.
- 8 To end **Smart Capture**, click .

 Make sure a camera is plugged to the i.LINK™ connector and turned on.

You can shoot video clips in the following formats:

### Non-compressed:

- Video 160 x 120, 24 bits, max. 10 frames/sec.
- Audio PCM, 11.025 kHz, 16 bits, monophonic

### Compressed:

- Video MPEG1 160 x 112, maximum of 30 frames/sec.).
- Audio MPEG1, 44.1 kHz (effective maximum equivalent to 11.025 kHz), monophonic.

A gap may appear when a rapid-moving object is displayed. However, this is not a malfunction.

## *Sending video clips via e-mail*

If you shoot a video clip in a low resolution format, its size will be small allowing you to send the video clip by e-mail.

To send video clips via e-mail, proceed as follows:

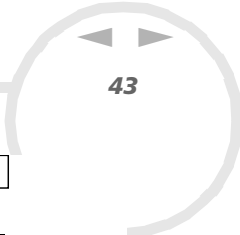
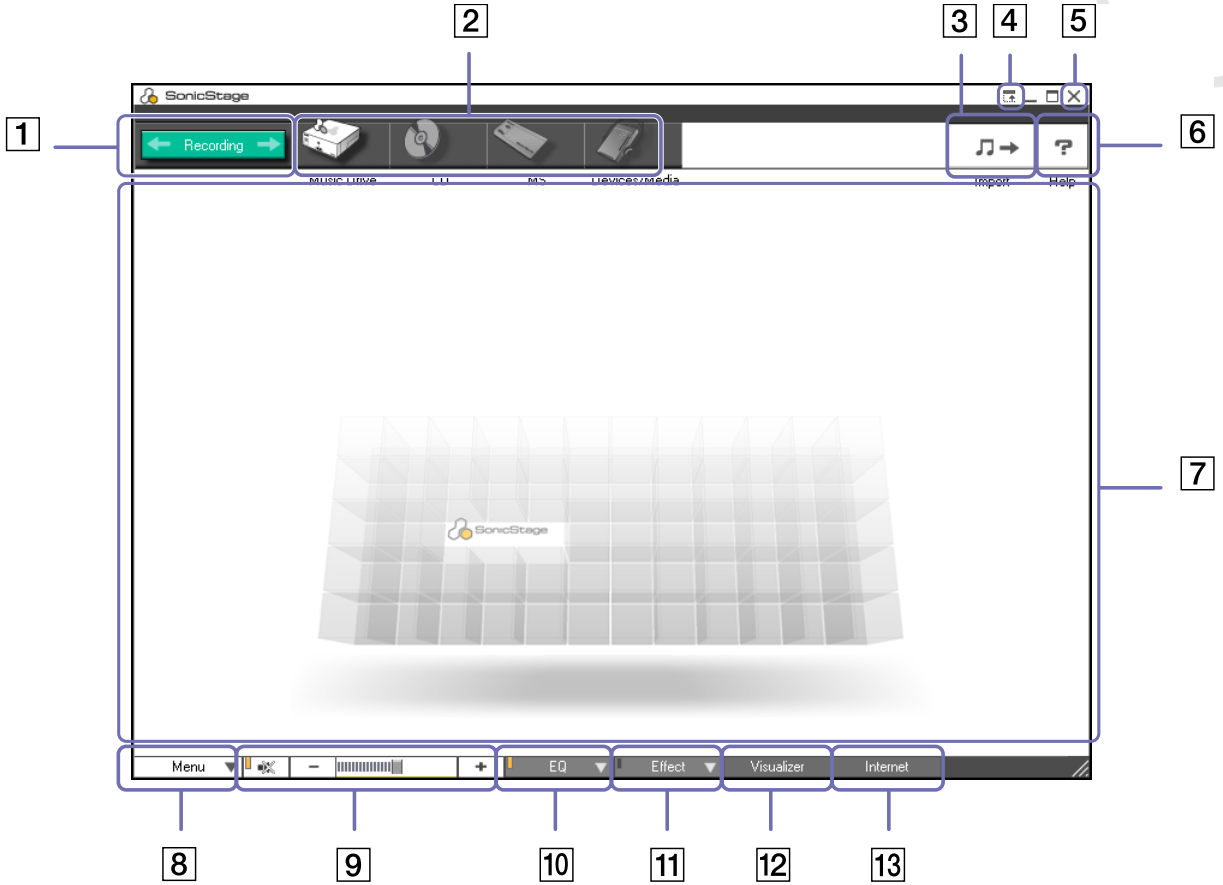
- 1 Launch **Smart Capture**.
- 2 Click **Movie Player**.
- 3 Click **Mail**.



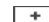
## Managing audio files with SonicStage

SonicStage lets you play and record audio CDs and import digital audio files while maintaining the copyright information of the contents. When you record an audio CD with SonicStage onto your computer's hard disk drive, the default format is ATRAC3. Other possible formats are: WAV, WMA, ATRAC3Plus. The imported data can be played on your computer or transferred to external devices or media. SonicStage converts your existing MP3, WMA and WAV format audio files into the default ATRAC3 format.


To open SonicStage, proceed as follows:

- 1 Click the **Start** button on the **Windows**<sup>®</sup> taskbar.
- 2 Point to **All Programs, SonicStage** and then click **SonicStage**.
- 3 The **Please confirm setup** dialog box appears.  
You can set SonicStage as the default application for playing audio CDs by selecting the appropriate check box.
- 4 Click **Yes**.  
The **Welcome to SonicStage** window appears if you open **SonicStage**.
- 5 Close the window.  
The **SonicStage** main window appears.



1	<b>Recording</b> button	Displays the <b>Recording Assistant</b> window. Select a source icon and a target icon.
2	Source icons	As a source you can use: - the <b>Music drive</b> : files from the music database <b>Music Drive</b> managed by SonicStage, or the audio files registered to a playlist on the <b>Music Drive</b> . - a <b>CD</b> : files from an audio-CD or CD-R. - a <b>MD</b> : files from a MiniDisc inserted into a Net MD* slot. - a <b>MS</b> : files from a MagicGate Memory Stick™ inserted into a Memory Stick™* slot. - <b>Devices/Media</b> : files from a Network Walkman or an external NetMD device.
3	<b>Import</b> button	Displays the <b>Import</b> window. You can use this window to import audio files stored on the computer into the <b>Music Drive</b> and register them to a <b>Playlist</b> .
4	<b>Simple Mode</b> button	Switches the <b>Main</b> window to <b>Simple Mode</b> . You can also switch to <b>Simple Mode</b> by clicking the shortcut key <F11>.
5	<b>Close</b> button	Closes SonicStage.
6	<b>Help</b> button	Displays the help file.
7	<b>Operation</b> area	The <b>Playback area</b> , <b>Content area</b> or <b>Edit area</b> are displayed in this area.
8	<b>Menu</b> button	Displays the main menu of SonicStage.
9	<b>Volume control</b> buttons	Here you can: -  turn the sound off or on ; -  turn the volume down; -  turn the volume up.
10	<b>Equalizer</b> button	In the <b>Equalizer</b> menu: - you can select a preset equalizer setting: flat, rock, pop, jazz or classical; - put the equalizer off; - change the equalizer settings.

11	<b>Sound Effect</b> button	You have the choice between: - <b>Vocal Cancellor</b> : the <b>Vocal Cancellor</b> cannot be applied to songs on a MiniDisc. - <b>Sounds Effects Off</b> .
12	<b>Visualizer</b> button	The <b>Visualizer</b> window shows various visual effects while playing an audio file.
13	<b>Internet</b> button	Opens or closes the <b>Internet Panel</b> . It allows you to download or stream audio files via EMD services.

 The CDDDB<sup>®</sup> (Compact Disc Database) Music Recognition Service registration wizard enables you to register with CDDDB. You need Internet access on your computer to register and use this service. For more information regarding CDDDB2 registration, click the **Help** button.

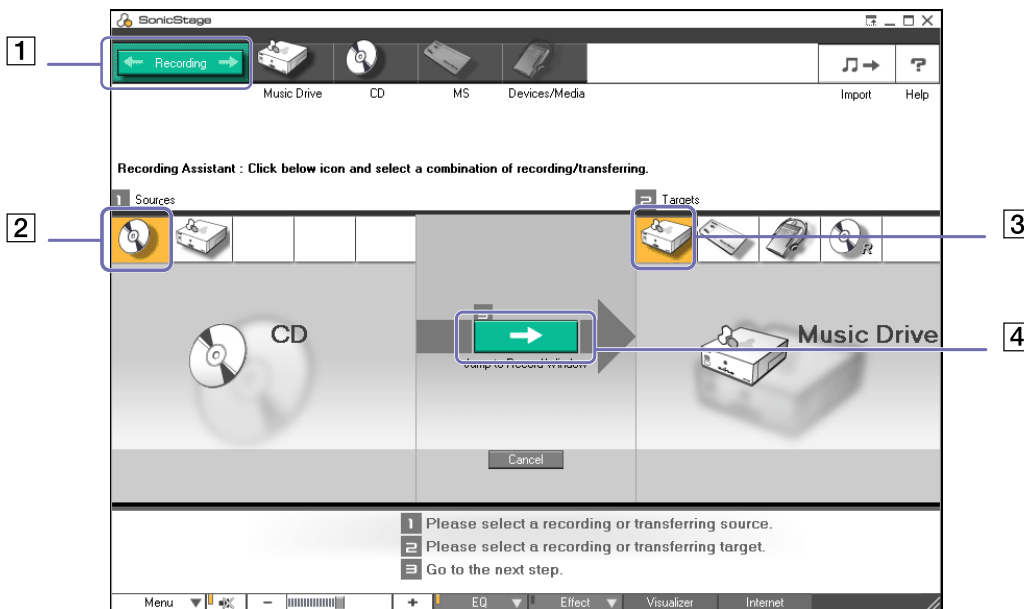
\* Only possible when you have this slot built-in on your machine.






## Recording from a CD

You can, for example, record songs from audio CDs and import them to playlists in SonicStage.

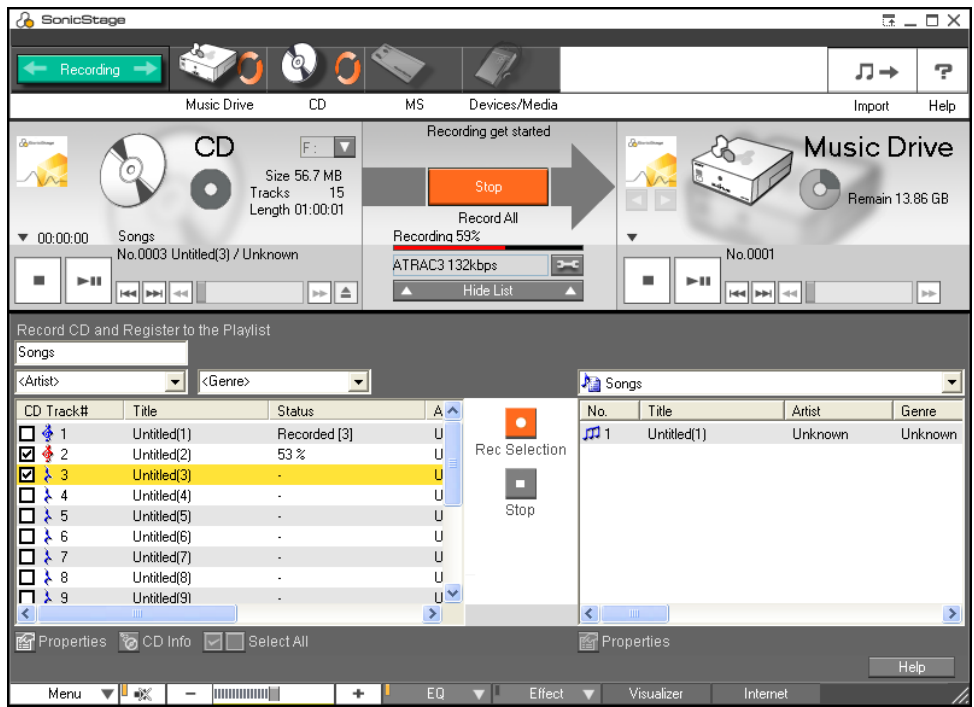
To record a CD, proceed as follows:

- 1 Insert an audio CD into your system's optical disc drive.
- 2 Click the **Recording** button (1).
- 3 Click the **CD** icon as your source (2).
- 4 Click the **Music Drive** icon as your target (3).



- 5 Click the **Jump to Record Window** button (4).  
The **RecordPanel** window appears.
- 6 If you only want to record a few songs, click the **Show List**  button.  
The list of tracks on your audio CD appears.
- 7 If necessary select the format and bit rate for recording by clicking the **Change CD Recording Format**  button.
- 8 You can select specific tracks on your CD by deselecting the check boxes from the tracks you do not want to record. You can clear all selected tracks by selecting the empty **Select All**  check box, and then selecting the tracks you want to record.  
For each song you can determine the song title, the artist and the genre.
- 9 Click the **Rec Selection**  button to begin recording.  
When you want to record all the songs of the audio CD to the playlist, you click the **Record All**  button.
- 10 When the recording is finished, the new playlist appears in the file tree view in the right pane.





When you record from an audio CD on your optical disc drive for the first time, the **CD Drive Optimization** dialog box appears. Click **Start** to verify your optical disc drive. Once the verification is performed, recording begins.

You can display the name of the CD and its songs by clicking the **CD Info** button and after registering with CDDB.


## Transferring songs (check in/out)

You can transfer songs between the playlists on your **SonicStage** software and external devices or media (for example, Memory Stick™ Walkman, Network Walkman, CD-RW). For more information on using your external devices or media, see the documentation that came with the product.

### Checking out songs

Checking out songs means transferring audio files from a computer to an external device (for example, a portable player).

To check out songs, proceed as follows:

- 1 Connect the external device or insert the media (for example, a MagicGate Memory Stick™) into your computer.  
Your computer automatically recognises the connected external device or media and the **Check-In/Out** window appears.
- 2 Click the **Show List** button to see which songs you have in the **Music Drive**.
- 3 In the **Tree** view on the left, select the playlist containing the song(s) to check out.
- 4 In the **List** view on the left, select the track to check out. To check out more than one song at a time, hold down the **<Ctrl>** key and select additional songs.
- 5 If necessary, select the transfer mode for checking out.
- 6 Click the **Check Out**  button or drag the song to the appropriate position in the song list of the external device or media.  
The checking out begins.

 SonicStage does not work with the blue Memory Sticks™. For more information, read the OpenMG manual.


To cancel **Check Out**, click **Stop**, or click **Cancel** in the processing dialog box that is displayed during the **Check Out** process.

## Checking in songs

After checking out audio files, you can transfer those files back to the hard drive. This is what we call checking in.

The songs that you transfer like this can only be checked in to the hard drive of the same computer from which the songs were checked out.

To check in songs, proceed as follows:

- 1 Connect the external device or insert the MagicGate Memory Stick™ into your computer. Your computer automatically recognises the connected external device or media and the **Check-In/Out** window appears.
- 2 Click the **Show List** button to see which songs you have on your Memory Stick™.
- 3 Select on the right-hand side the track to check in. To check in more than one song at a time, hold down the **<Ctrl>** key and select additional songs.
- 4 If necessary, select the transfer mode for checking in.
- 5 Click the **Check-In**  button.  
The checking out begins.

 To cancel **Check In**, click **Stop**, or click **Cancel** in the **Processing** dialog box that is displayed during the **Check In** process.

## Additional features

- ❑ **SonicStage Backup Tool** – You can back up and restore all the music, graphics and information data managed by **SonicStage**. You must be connected to the Internet to use the **SonicStage Backup Tool**.
- ❑ **Import audio files in various formats** – You can import audio files with various formats, such as MP3, WAV and WMT standards. You can also import audio files that comply with the Microsoft® Windows® Media™ Technologies (WMT) standard, identified by ASF or WMA extensions. Manage your audio files through the **Playlist** feature of **SonicStage**.
- ❑ **Manage imported songs on the Playlist** – Additional features are available when you register your imported songs through the **Playlist** feature of **SonicStage**. You can manage your music by creating your own list of songs categorised by genre or artist, displaying your song list in the **Playlist** feature, and arranging your songs in a customised order using the **Playlist** folders. Edit your music by combining multiples songs into a single one, or divide one song into two, by using the **Combine** and **Divide** features.
- ❑ **Simple mode** – The main **SonicStage** window in **Simple mode** is a smaller, compact version of the **Full mode** view. This can be useful when you want to listen to songs with **SonicStage** while using other software, or whenever you feel that **Full mode** view is intrusive. The design of the main **SonicStage** window in simple mode can be changed by selecting a new “skin”, which enhances the appearance of the window. The **Simple mode** feature enables you to perform playback operations only.

## Using DigitalPrint

DigitalPrint is designed to help you get the most enjoyment out of your photographs taken with a digital camera.

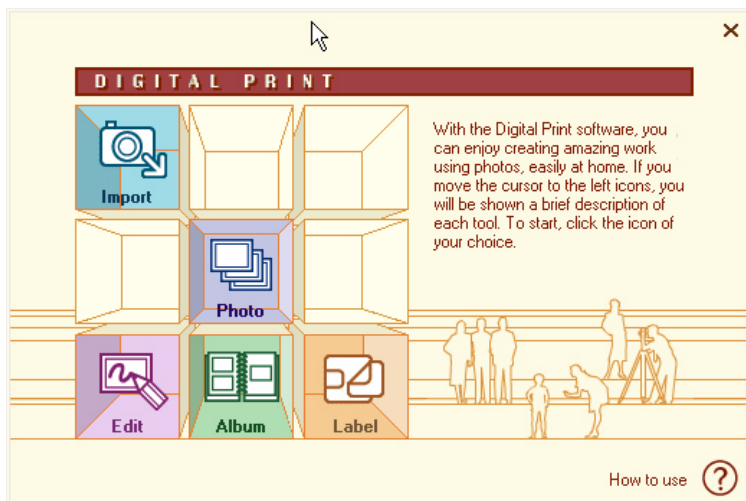
With DigitalPrint, you can easily load photos onto your computer, create photo albums, decorate your photos, print them and even make labels for your favourite storage media.

DigitalPrint includes the following five tools. All these tools can be launched from the DigitalPrint Launcher.

- ❑ **PhotoCapture:** Load photos from a digital camera or a Memory Stick™ onto your computer.
- ❑ **PhotoCollection:** View and print photos that you have loaded onto your computer.
- ❑ **PhotoDecor:** Draw on and add pictures and stamps to photos that you have loaded into your computer.
- ❑ **PhotoAlbum:** Create photo albums using the photos that you have loaded into your computer.
- ❑ **LabelMaker:** Create labels for CDs, MDs, videotapes, etc.

To launch DigitalPrint, proceed as follows:

- 1 In the **Start** menu, select **All Programs, DigitalPrint**, and then **DigitalPrint. DigitalPrint Launcher** appears.



- 2 Click **Import** to launch PhotoCapture or click **Photo** to launch PhotoCollection or click **Edit** to launch PhotoDecor or click **Album** to launch PhotoAlbum or click **Label** to launch LabelMaker.

## Importing photos

Use PhotoCapture to load images that are stored on a digital camera or a Memory Stick™ onto your computer.

PhotoCapture can automatically recognise the digital camera or Memory Stick™ that is connected to the computer.

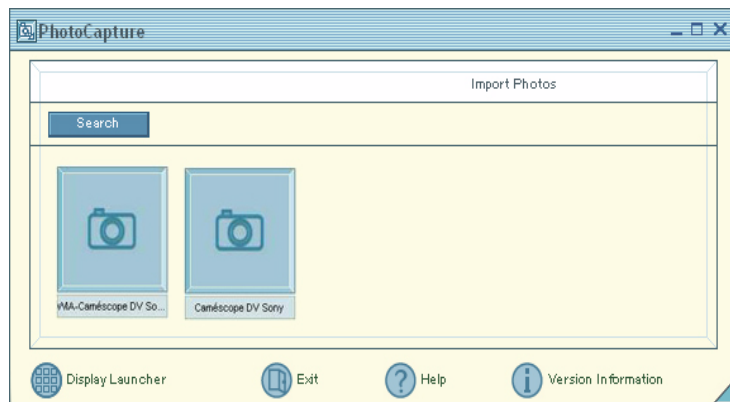
Once photos are loaded into your computer, they can be used to create original works (photo albums and labels) with PhotoAlbum and LabelMaker. You can also print photos with PhotoCollection.

PhotoCapture can load photos from the following digital cameras and storage devices:

- ❑ USB storage class-compatible digital cameras
- ❑ TWAIN-compatible digital cameras
- ❑ Memory Stick™.

To import photos, proceed as follows:

- 1 Connect a digital camera or a Memory Stick™ that contains the images you want to transfer to your computer.
- 2 Open **DigitalPrint Launcher** and simply click the **Import** icon. You can also launch **PhotoCapture** from the **Start** menu by clicking **All Programs, DigitalPrint, Tool, PhotoCapture**. The **PhotoCapture** window appears.
- 3 Depending on the device connected to your computer, you can click a Photo folder icon or a camera icon.





- 4 In either case, click the icon to load all the photos of the devices. Enter a name for your photo folder in the **Enter Photo Name** dialog box and click **OK**. The images are loaded into your computer and appear in the **Imported Photos** window. You can now use the pictures for editing, printing, creating CD labels, etc.



## Printing photos

With PhotoCollection, printing photos at home is just as easy as asking your local photo shop to develop your photos or make reprints.

Photos stored in a folder can be printed as a group. Since you can also specify the number of prints to be made of each photo, you only need to run one printing job (instead of printing each photo separately, one at a time), even if you want to give copies to a lot of people.

To print photos, proceed as follows:

- 1 Click the **Photo** icon in the **DigitalPrint Launcher**.

PhotoCollection can also be launched directly from the **Start** menu by selecting **All Programs, DigitalPrint, Tool, PhotoCollection**.

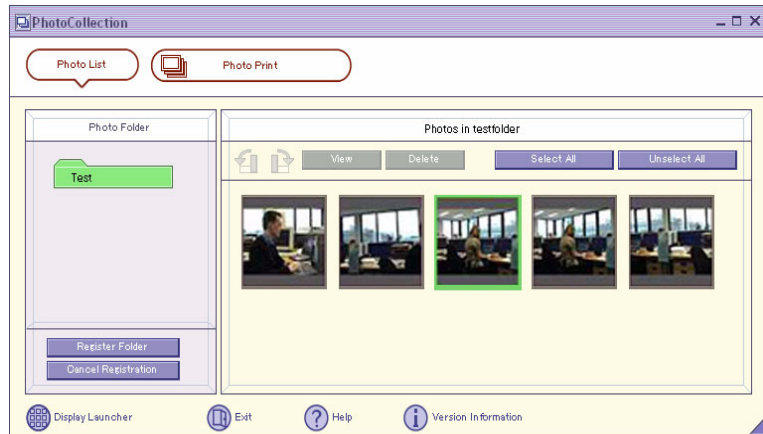
The **PhotoCollection** window appears.

- 2 Click **Register Folder** to register a photo folder (load the photos into the computer) and follow the onscreen instructions or select a folder in which photos are stored and click the **OK** button.

- 3 To print photos from the folder, simply click the **PhotoPrint** button.

You can specify the number of prints and select the paper.

 For more information about the functionalities of PhotoCollection, refer to the online help files.



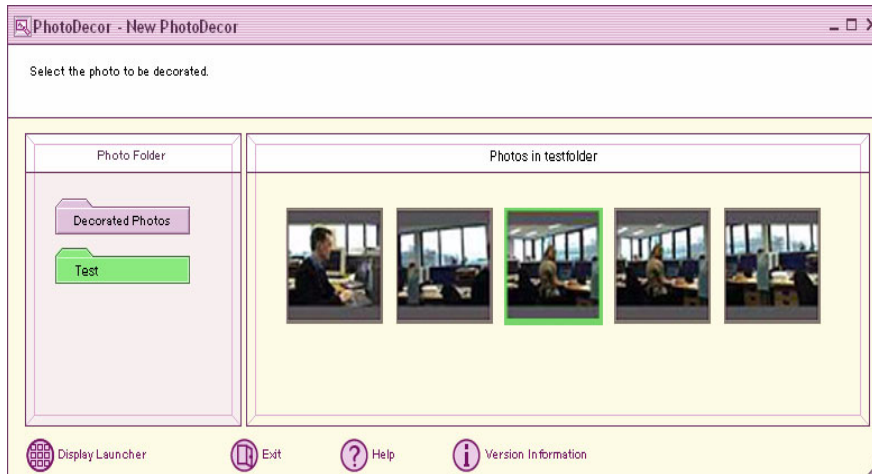
## Decorating photos

PhotoDecor allows you to decorate digital photos by adding lines, graphics, text, and stamps to digital photos.

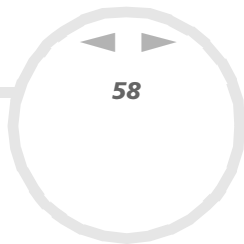
You can use stamps and a variety of pen patterns to decorate digital photos and create colourful and original works of art through simple operations.

To decorate photos, proceed as follows:

- 1 Open PhotoDecor from the **DigitalPrint Launcher** by clicking the **Edit** icon. You can also launch PhotoDecor directly from the **Start** menu by selecting **All Programs, DigitalPrint, Tool, PhotoDecor**. The **PhotoDecor** window appears.




- 2 Select a photo folder that contains the images you wish to decorate and select one photo.



3 Use the **Pen, Auto Shape, Text, Clip Art** or **Stamp Tool Palette** to edit your image.

4 Print or save your edited picture by clicking the **Print** or **Save** icon.

 For more information on the use of PhotoDecor, refer to the online help.

## Creating a photo album

With PhotoAlbum, you can create and print albums of photos taken with a digital camera or photos you have loaded on your computer.

PhotoAlbum is very simple to use. It includes many useful design templates. Use these templates to easily create an attractive album even if you have little design experience.


You can also print your album to create wonderful photo collections, adding a whole new dimension of enjoyment to digital camera photography.

To create an album, proceed as follows:

- 1 Open PhotoAlbum from the **DigitalPrint Launcher** by clicking the **Album** icon. You can also launch PhotoAlbum directly from the **Start** menu by selecting **All Programs, DigitalPrint, Tool, and PhotoAlbum**. The initial **PhotoAlbum** window appears.



- 2 Click the **Create New Album** button and register a photo folder or select an existing one. You can select all or only some of the photos in the album.
- 3 To select your images, click the **List** button in the photo folder and select the images in the **Photo List** dialog box. Then click the **Create the album with the selected photo(s)** button. The **Select Design** window appears.
- 4 Select a design from the **Select Design** window by clicking it. The **Select Layout** window appears.
- 5 Select a photo layout by clicking it. The album is created and the **album** menu appears.
- 6 Use the album menu to decorate the existing albums or to print them. You can either preview the album or change the layout, or design.

 For more information on the use of PhotoAlbum, refer to the online help.


## Creating labels

LabelMaker is an easy-to-use label-making software. Use the design templates to make beautifully designed labels.

To create labels, proceed as follows:

- 1 Open LabelMaker from the **DigitalPrint Launcher** by clicking the **Label** icon. It is also possible to launch LabelMaker directly from the **Start** menu by selecting **All Programs, DigitalPrint, Tool, LabelMaker**. The **LabelMaker** window appears.



- 2 In the list on the side of the screen, click the medium for which you want to create a label or edit an existing label (CDs, MDs, VHS cassettes, etc.).  
The **Select Paper** window appears.
  - 3 Click the paper you wish to use.  
The **Select Design** window appears.
  - 4 Click the design you wish to use.  
The **Song List** (if you selected a music medium like CD or MD) or the **Edit** window appears.  
Edit the album and track names in the **Song List** window.  
Create a track name list when you are creating a label for a music medium, such as a CD. Then click the **Input to the label** button.
  - 5 In the **Edit** window, edit the label by using the **Pen, Auto Shape, Text, Clip Art** or **Image Tool Palette**.
  - 6 Save or print your label by clicking the **Save** or **Print** button.
-  For more information on the use of LabelMaker, refer to the online help.  
LabelMaker can be launched and used in conjunction with other Sony applications such as SonicStage.



## Customizing your computer

The following sections briefly describe how to change the main settings of your computer. Among other things, you will learn how to prepare your modem for use, how to use and customise the look of your Sony software and utilities, etc.

- ❑ Setting up your notebook with Sony Notebook Setup ([page 64](#))
- ❑ Managing power ([page 66](#))
- ❑ Selecting display modes ([page 73](#))
- ❑ Configuring your modem ([page 74](#))
- ❑ Changing your windows design with the UI Design Selector program ([page 76](#))
- ❑ Setting a Sony wallpaper ([page 77](#))
- ❑ Selecting a screen saver ([page 78](#))

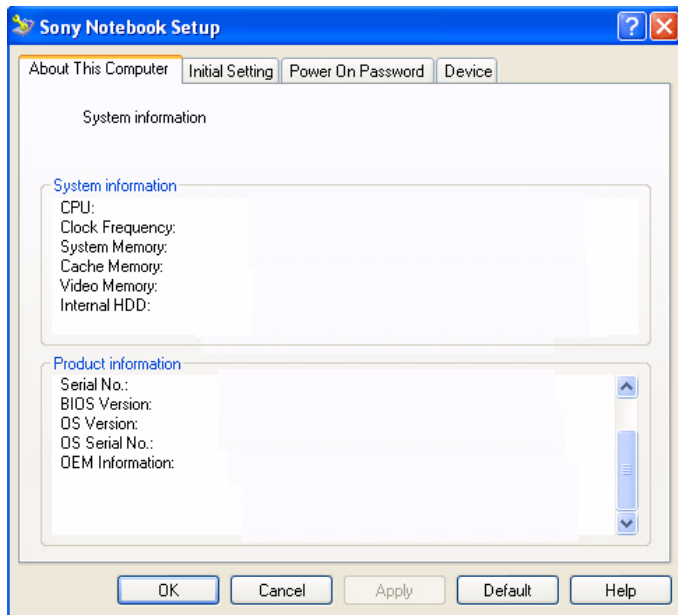


## Setting up your notebook with Sony Notebook Setup

The **Sony Notebook Setup** utility allows you to consult system information, specify preferences for system behaviour, and set up password protection for your VAIO notebook.

To use Sony Notebook Setup, proceed as follows:

- 1 Click the **Start** button on the **Windows**<sup>®</sup> taskbar.
- 2 In **All Programs**, select **Sony Notebook Setup** and then click **Sony Notebook Setup**. The **Sony Notebook Setup** window appears.



<i>Tab</i>	<i>Description</i>
About This Computer	Displays system information, including memory capacity, serial number, and BIOS version.
Initial Setting	Selects the drive and device order you wish to use for loading the operating system. You can specify the hard drive as well as other drives inserted into your computer. You can change the volume of the sounds played while the operating system is loading.
Power On Password	Sets the password to secure your computer. If you use this option, remember the password at all times. If you forget the password, you cannot change this setting anymore, and you will not be able to start your computer.
Device	Disables ports or devices to release resources to the system. To change the port settings, select a port and click <b>Settings</b> in the <b>Device</b> tab.

- 3 Select the tab for the item you want to change.
- 4 Once finished, click **OK**.  
The item has been changed.

For more information about each option, click Help on the **Sony Notebook Setup** screen to display the help file.

Windows® XP Professional (PCG-GRS515SP only): If you open **Sony Notebook Setup** as a limited user, then only the **About This Computer** tab will be visible.

## Managing power


The **PowerPanel** utility controls the power management of your notebook and provides key information about system activity and battery life. The automatic power management selects the most advantageous profiles, or lets you customise the profiles you choose, according to your own needs, with the goal of extended battery life.

**PowerPanel** has the following features:

- ❑ Automatic Profile Selection (APS) based on the currently active application;
- ❑ Ability to select specific Power Profiles manually from the menu;
- ❑ Ability to edit and create new profiles;
- ❑ Ability to display detailed battery information;
- ❑ CPU performance monitoring tool;
- ❑ It works in harmony with your Windows settings.

## Activating PowerPanel

When you start the computer, the **PowerPanel** icon appears in the system tray by default.


If the computer is running on AC power, you see PowerPanel's **Performance** icon: .

If the computer is running on battery power, the **Battery Life** icon is displayed: .

To see the CPU state and the current power profile, simply point to the icon. The CPU state and current power profile will be displayed in a tooltip.

To change profiles, proceed as follows:



- 1 Right-click the **PowerPanel** icon in the taskbar and select **Profiles**.
- 2 In the **Profiles** menu, select a profile.  
The appropriate power settings are activated.

 When you use the battery pack as power source, your system selects the **Maximum Battery Life** power management profile by default. If you select a different power management profile while using battery power, the same profile will automatically be selected the next time you use the battery pack to power your computer.




## Activating power management profiles









PowerPanel provides several predefined **power management profiles**. Each profile consists of a group of power management settings that are designed to meet specific power management goals, ranging from maximum power management to no power management.

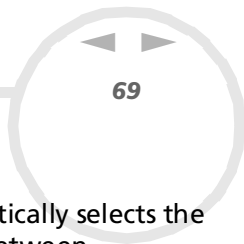
### Running on AC

<i>Icon</i>	<i>Description</i>
	<b>AC Power</b> – The power management state when AC power is in use. PowerPanel automatically loads the AC profile unless you disable this feature.
	<b>Power Management Off (Plugged in)</b> – Turns off all power management features such as <b>Standby</b> and <b>Hibernate</b> modes.

### Running on the battery

<i>Icon</i>	<i>Description</i>
	<b>Maximum Battery Life</b> – Provides power saving features to give you maximum battery life and good performance. It reduces the brightness of the display and puts the system into <b>Standby</b> mode after a specified time period.
	<b>Maximum Performance</b> – Provides the best system performance while still conserving power.
	<b>Word Processing</b> – Optimizes power management with longer timeouts on the hard disk and display screen. You can also establish settings for LCD (Video) Standby, Hard Disk Standby, and Standby to optimize power management for your system.

	<p><b>Spreadsheet</b> – Reduces the LCD brightness to 'medium', as your software does not require higher performance.</p>
	<p><b>Presentation</b> – Keeps the display on at all times while it conserves power. This option is ideal for slideshow presentations. You can establish settings for <b>LCD (Video) Standby</b>, <b>Hard Disk Standby</b>, and <b>Standby</b> to optimize power management for your system.</p>
	<p><b>Communications</b> – Extends battery life by initiating a quick display time-out. You can also establish settings for <b>LCD (Video) Standby</b>, <b>Hard Disk Standby</b>, and <b>Standby</b> to optimize power management for your system.</p>
	<p><b>Games</b> – Disables the display and the <b>Hard Disk</b> timer.</p>
	<p><b>DVD</b> – Optimizes performance and power requirements for DVD usage.</p>
	<p><b>Camera</b> – Optimizes performance and power requirements for camera usage.</p>
	<p><b>Power Management Off (Running on the battery)</b> – Turns off all power management features such as <b>Standby</b> and <b>Hibernate</b> modes.</p>
	<p><b>Automatic Profile Selection</b> - Analyses the performance of each application you choose and matches the profiles to its needs.</p>



## Selecting automatic profiles

A power profile is a set of timer values for a variety of system devices. PowerPanel automatically selects the profile associated with the application you are using and changes profiles as you switch between applications.

Power management lets your system enter energy saving modes by levelling some energy-consuming parameters, such as LCD brightness, or hard disk activity.

To select automatic profiles, proceed as follows:

- 1 Right-click the **PowerPanel** icon in the taskbar.
- 2 Select **Profiles**.
- 3 Select **Automatic Profile Selection**.





## Displaying detailed battery information

You can display detailed information of your computer's battery.

To display battery information, proceed as follows:



- 1 Double-click the **PowerPanel** icon in the taskbar.  
The **Battery Information** window appears.
- 2 Select the **Battery** tab.  
This tab contains information such as the estimated battery life remaining and charging time.

### *Battery icon    Battery status*

	discharging: the icon is blue
	fully charged: the icon is completely blue with an AC power plug
	charging: the icon is blue with a red clip attached to the terminal
	no battery: the icon is blue with a yellow cross over it

## Displaying CPU information

You can also view the level of performance of your notebook with the CPU Controls. To do so, you just have to move your cursor over the CPU icon in your taskbar.

<i>Icon</i>	<i>Description</i>
<b>Performance:</b> 	This control helps to maximise the CPU clock speed. The computer can then be used at its maximum performance. This will be the default icon when the computer is connected to the mains supply.
<b>Battery Life:</b> 	This control helps to reduce the notebook's power consumption by decreasing the CPU clock speed and the power voltage. This will be the default icon when the computer is disconnected from the mains supply, using the battery.

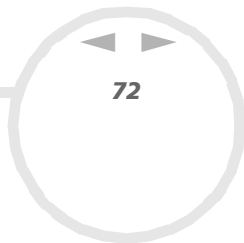
For more detailed information on what you can do with PowerPanel, refer to the **Help** files of PowerPanel.

## Editing a power profile

To edit the power management settings of a power profile, proceed as follows:

- 1 Right-click the CPU icon in the taskbar and select **Edit/Create Profiles** from the menu. The **Profile Editor** window appears.
- 2 Click the profile you want to edit on the left of the screen.
- 3 Double-click the power profile property (CPU Control, Hibernate, Standby...) you want to modify on the right of the screen.  
An option list or a dialog box will appear. Add or define the setting you want to select.
- 4 Click the **File** menu and then click **Save**.





## Creating a power profile

To create a power profile, proceed as follows:

- 1 Right-click the CPU icon in the taskbar and select **Edit/Create Profiles** from the menu. The **Profile Editor** window appears.
- 2 Select **New** from the **File** menu.
- 3 Select the kind of profile you want to create:
  - profile when your computer is plugged in,
  - profile when your computer is running on batteries.  
The new Power Profile is displayed.
- 4 Select the appropriate Power Management Settings.
- 5 From the **File** menu, click **Save**.


## Selecting display modes

This notebook uses the Mobility Radeon 7500 video controller. You can select which display is used when the notebook is connected to an external display. When you connect an external display, you can switch the display between your notebook's LCD and the external monitor.

Before you can select a display, you need to shut down your notebook, connect the external display (TV, panel or monitor) to your notebook, and restart.

To select a display, proceed as follows:

- 1 Click the **Start** button, and then click **Control Panel**.  
The **Control Panel** appears.
- 2 Double-click **Appearance and Themes**, and then select **Display**.  
The **Display Properties** dialog box appears.
- 3 Click the **Settings** tab.
- 4 Click the **Advanced** button.  
The **Sony Notebook LCD and Mobility Radeon 7500 Properties** dialog box appears.
- 5 Click the **Displays** tab.  
Select the **Monitor, Panel** or **TV** icon.
- 6 Click **Apply** and then **OK**.

 You cannot have a display on TV and on another display at the same time.

You may not be able to display the notebook LCD screen and an external display or a projector at the same time, depending on the types of computer displays and projectors you are using.

If the display resolution of your notebook is more than 800 x 600 dots, a part of the image cannot be displayed on your TV display. You can see the hidden area on your TV display by moving the cursor on your computer. If you want to display the full image, you need to change the display resolution of your notebook to 640 x 480 dots.

Before turning on the computer, turn off the peripheral devices.

If you want more information on the ATI video controller, click the ATI icon in the taskbar and click **Help**.


## Configuring your modem

Before you can start using your internal modem, or each time you use your modem while travelling, make sure that the country of the active location defined in the **Phone and Modem Options** dialog box matches the country you are dialling from.

You may notice a **Country Selector** tab under your current modem driver options. As the **Country Selector** tab is not a constant feature, do not use this tab to change the country settings. Only the following procedure is reliable.

To change your modem country settings, proceed as follows:

- 1 Click **Start** and then **Control Panel**.
- 2 Double-click **Phone and Modem Options**.  
The **Phone and Modem Options** dialog box appears.  
If you do not see the **Phone and Modem Options** dialog box, click **Switch to Classic View** on the left side.
- 3 Select your location on the **Dialing Rules** tab.
- 4 Click the **Edit** button to change the current configuration.  
The **Edit Location** dialog box appears.  
Or  
Click the **New** button to configure your modem.  
The **New Location** dialog box appears.
- 5 Check the country/region settings, and make sure it matches the place you are dialling from.
- 6 If you modified your location settings, click **Apply**, and then **OK**.  
The **Phone and Modem Options** dialog box appears.
- 7 Check that your modem is listed in the **Modems** tab.  
If your modem is not listed, click **Add** and follow the wizard.
- 8 Click **Apply/OK**.  
Your modem is configured.

 Before applying new country settings, please make sure your phone line is disconnected from your VAIO computer.

## Updating the modem driver

If you need to update the modem driver for any reason, proceed as follows:

- 1 Click the **Start** button and open **Control Panel**.  
The **Control Panel** window appears.
- 2 Click the **Printers and Other Hardware** icon.  
The **Printers and Other Hardware** window appears.
- 3 Click the **Phone and Modem Options** icon.  
The **Phone and Modem Options** dialog box appears.
- 4 Click the **Modems** tab and then click **Properties** to view the properties of your modem.  
The **Modem Properties** dialog box appears.
- 5 On the **Driver** tab, click **Update driver**.  
The **Hardware Update Wizard** window appears.  
Follow the instructions that appear on your screen. You can perform a Windows search for the driver, or point to the driver's location yourself.

## Changing your windows design with the UI Design Selector program

You can change the window design of Sony software compatible with the **UI Design Selector** program.

To change the window design using UI Design Selector, proceed as follows:


- 1 Click **Start**, and then **Control Panel**.  
If you do not see **UI Design Selector**, click **Switch to Classic View** on the left side.  
OR  
If you do not see **UI Design Selector**, click **Other Control Panel Options** on the right side.
- 2 Double-click **UI Design Selector**.  
The **UI Design Selector** dialog box appears.
- 3 Click << or >> and select the design you like.
- 4 Click **Apply**.  
The **UI Design Selector** window design changes, to give you a preview of the design you chose for the Sony software.
- 5 To try another design, click << or >>.
- 6 Click **OK** once you are satisfied with your choice.  
The **UI Design Selector** dialog box disappears and changes the window design of Sony software as you selected.

## Setting a Sony wallpaper

Your Sony VAIO computer offers you, among many other features, a choice of wallpapers. You can change the wallpaper, the background of your desktop, as many times as you like. There are several VAIO-specific wallpapers to choose from.

To set another VAIO wallpaper, proceed as follows:

- 1 Go to **Control Panel** and select the **Switch to Classic View** option. Double-click the **Display** icon. The **Display Properties** dialog box appears.
- 2 Click the **Desktop** tab. A list of Windows and VAIO wallpapers is displayed.
- 3 Select a wallpaper in the **Background** list. You can see a preview of this wallpaper in the monitor above the **Background** list.
- 4 Adjust the position of the wallpaper with the **Position** drop-down list.
- 5 Click **Apply** when you have found the appropriate wallpaper.
- 6 Click **OK** to close the **Display Properties** dialog box. The wallpaper is applied to your computer.

 A higher screen resolution reduces the size of items on your screen and increases the relative space on your desktop.

You may not be able to increase the screen resolution above a certain level. Your monitor and video adapters, for example, determine to which extend you can change the resolution.

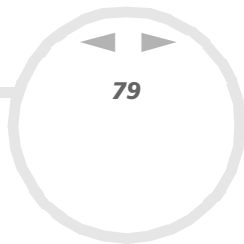
## Selecting a screen saver

A screen saver is an animated image that is activated on a computer display when no user activity has been sensed for a certain time. The original purpose of a screen saver was to prevent burn-in (the burning of an image into the phosphor inside the cathode ray tube after hours of the same image being rescanned). In fact, today's CRT display technology makes burn-in unlikely except under extreme conditions.

Your computer comes with built-in screen savers that you can select.

To change the built-in screen saver, proceed as follows:

- 1 Right-click on the desktop.
- 2 Select **Properties**.  
The **Display Properties** dialog box appears.
- 3 Select the **Screen Saver** tab.
- 4 In the **Screen saver** drop-down menu, select a screen saver.  
When you want to see how the screen saver looks like, click **Preview**.
- 5 Click **Apply** and **OK**.



## *Installing and updating applications*

This section explains how to install, run or uninstall a software. Furthermore, you will learn how to download the latest updates from our website.

- ❑ Installing software ([page 80](#))
- ❑ Changing or removing software ([page 81](#))
- ❑ Uninstalling software ([page 82](#))
- ❑ Downloading software ([page 84](#))



## Installing software

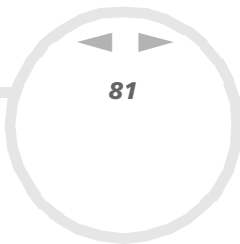
Before installing the applications:

- Install and connect a hardware device, if necessary (see the **Managing drivers (page 85)** section);
- Close all open applications.

To install an application from the supplied CD-ROM, proceed as follows:

- 1 Click **Start** and then **Control Panel**.
- 2 Double-click **Add or Remove Programs**.  
The **Add or Remove Programs** dialog box appears.
- 3 Click **Add New Programs**, and then click **CD or Floppy**.  
The **Install Program From Floppy Disk or CD-ROM** window appears.
- 4 Insert the first installation floppy disk or CD-ROM and click **Next**.  
The **Run Installation Program** appears.
- 5 Click **Browse...** to find the installation program.  
The **Browse** window appears.
- 6 Select the installation program and click **Open**.  
The path of the installation program appears in **Open:** text box.
- 7 Click **Finish**.  
A **Licence Agreement** dialog box might appear.
- 8 Read the agreement and click **Yes** to accept.  
You are asked to define the location where you want to install the software.
- 9 Click **Browse** to select the folder and click **Next**.  
If necessary, select the type of installation you wish and click **Next**.  
The software installation begins.  
Make sure to select **Yes, I want to restart my computer now** if you are asked to.
- 10 Click **Finish**.  
Installation is complete and your computer restarts.

 When using **Add or Remove Programs**, you can only install programs that were written for Windows® operating systems.



## Changing or removing software

You can at all times remove or change a software application.

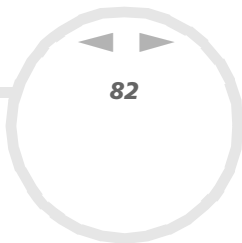
To change or remove a software, proceed as follows:

- 1 Click **Start**, click **Control Panel**, and then click **Add or Remove Programs**.
- 2 Select the software you want to change or remove.
  - To change a program, click **Change/Remove** or **Change**.
  - To remove a program, click **Change/Remove** or **Remove**.

! When you click **Change or Remove**, some programs may be removed without any further warning.

 You can sort programs by selecting different options in **Sort by**.

**Add or Remove Programs** will only remove programs that were written for Windows® operating systems. For other programs, check the documentation to see if other files (such as .ini files) should be removed.



## Uninstalling software

Before proceeding, close the application you want to uninstall.

To uninstall software, proceed as follows:

- 1 From the **Start** menu, click **Control Panel**.  
The **Control Panel** window appears.
- 2 Double-click the **Add/Remove Programs** icon.  
The **Add/Remove Programs** dialog box appears.
- 3 Select the software you wish to uninstall from the list of currently installed programs, then click **Change/Remove**.
- 4 Select **Remove**, and then click **Next**.  
The **Confirm File Deletion** dialog box appears.
- 5 Click **OK**.  
If the **Locked file detected** dialog box appears, click **Reboot**. The computer restarts once uninstallation is completed and all previously used files are deleted.  
If the **Shared file detected** dialog box appears, it is recommended that you click **No** to keep shared files.
- 6 Click **Close**.  
The software is uninstalled.

## Caution

### Windows<sup>®</sup> File protection

Installing a program might overwrite shared system files such as **dynamic-link libraries** (DLL files)\* and executable files (EXE files). When system files are overwritten, system performance becomes unpredictable, programs behave erratically, and the operating system can fail.

Never delete files with the following extensions: SYS, DLL, OCX, TTF, or FON.

In Windows<sup>®</sup> XP, **Windows File Protection** prevents the replacement of protected system files such as SYS, DLL, OCX, TTF, FON, and EXE files. **Windows File Protection** runs in the background and protects all files installed by the **Windows Setup** program.

**Windows File Protection** detects attempts by other programs to replace or move a protected system file. It also checks the file's digital signature.

\* This is an operating system feature that allows executable routines (generally serving a specific function or set of functions) to be stored separately as files with DLL extensions. These routines are loaded only when needed by the program that calls them.

### File Signature verification

When you install a new application on your computer, you might overwrite system files and device driver files with unsigned or incompatible versions, which provokes system instability.

The system files and device driver files provided with Windows<sup>®</sup> XP have a Microsoft digital signature, which indicates that the files are original, unaltered system files or that they have been approved by Microsoft<sup>®</sup> for use with Windows<sup>®</sup>.

## Downloading software

Please note it is possible to download the latest upgrades of software for your computer on our website. Just click the following link to access it: [www.vaio-link.com](http://www.vaio-link.com)

To download the latest upgrades, proceed as follows:

- 1 Go to [www.vaio-link.com](http://www.vaio-link.com) and choose your language.
- 2 Click the **VAIO User** button.
- 3 Fill in the two codes and enter the site.
- 4 Select **Downloads** and follow the procedure.  
A list of available downloads appears.
- 5 Choose the appropriate upgrade and follow the online instructions to download it.

 To install your application, see the **Installing software (page 80)** section.

## Managing drivers

A driver is a software enabling you to use hardware devices. For example, in order for you to be able to use a printer, you must first install its driver. Many drivers, such as the mouse driver, come with the operating system.

This section explains how to install, check, update or uninstall a driver.

The Windows<sup>®</sup> XP Rollback feature is also explained.

Finally, you will learn how to download the latest drivers from our site.

- ❑ Installing a driver ([page 86](#))
- ❑ Checking the driver's installation ([page 87](#))
- ❑ Updating a driver ([page 88](#))
- ❑ Uninstalling a driver ([page 89](#))
- ❑ Restoring a driver ([page 90](#))
- ❑ Downloading drivers ([page 92](#))

## Installing a driver

If the driver does not come with a specific installation procedure, please proceed as follows to install it:

- 1 Insert the application CD-ROM into the CD-ROM drive (or the disk or the CD-ROM accompanying the device you want to configure).
- 2 Connect the device that needs a driver, to your computer.  
The **Found New Hardware Wizard** screen appears.
- 3 Select **Specify a location**, then click **Next**.
- 4 When installing a driver from the provided CD-ROM (or disk) by using a CD-ROM (or disk) drive connected to the computer, select the **Drivers** folder on the CD-ROM (or disk) drive.
- 5 When installing a driver after having copied the contents of the provided CD-ROM (or disk) to your hard disk, browse to the appropriate subdirectory containing the driver. The subdirectory should be found in the folder you copied from the CD-ROM (or disk).
- 6 Click **OK** to begin the search procedure.
- 7 Click **Next** to install the driver.  
A new window appears when the driver has been installed.
- 8 Click **Finish**.  
You may be asked to restart your machine.
- 9 Click **Yes**.  
The driver is installed.



To install your device driver, you must be logged on to your computer with an administrator account.

## Checking the driver's installation

When the computer restarts, verify that the device is working properly.

To verify the driver's installation, proceed as follows:

- 1 From the **Start** menu, click **Control Panel**.  
The **Control Panel** window appears.
- 2 Double-click the **System** icon.  
The **System** dialog box appears.  
If you do not see the **System** icon, click **Switch to Classic View** on the left side.
- 3 Click the **Hardware** tab, then click **Device Manager**.
- 4 Double-click the option corresponding to the device you installed, then double-click your device.  
The **Properties** dialog box appears.
- 5 Make sure that the **This device is working properly** message is displayed under **Device status**.
- 6 Click **OK**.  
Close all the opened windows, your device is ready for use.

The device is not working properly in the following cases:

- Your device is shown in **Device Manager** with a yellow question or exclamation mark.  
Right-click your device and click **Uninstall**. Then repeat from step 2 in **Installing a driver (page 86)**.
- Double-clicking the category of your device in the device manager list does not display your device.  
You have to remove your device. Please refer to **Uninstalling a driver (page 89)** to remove it. Then repeat from step 2 in **Installing a driver (page 86)**.
- Double-clicking **Other devices** displays your device.  
You have to right-click your device, then click **Uninstall**. Repeat from step 2 in **Installing a driver (page 86)**.
- If the **This device is working properly** message is not displayed, the device is not working properly.  
Click **OK** to close the **Properties** dialog box, then reinstall the driver as follows:



- ❑ Right-click **Uninstall**.
- ❑ When the **Confirm Device Removal** dialog box appears, click **OK**.
- ❑ Click **Yes** and restart the computer.
- ❑ When the computer restarts, repeat from step 2 in **Installing a driver (page 86)**.
- ❑ If your device is not displayed in the **Properties** dialog box, the device is not working properly. Repeat steps 1 through 4 in the previous sections to verify the driver's installation. Click your device, then click **Uninstall** to remove the driver. Click **Yes** to restart the computer. When the computer restarts, repeat from step 2 in **Installing a driver (page 86)**.

## Updating a driver


To update the driver, proceed as follows:

- 1 Click **Start** on the taskbar.
- 2 Click **Control Panel**.
- 3 Click the **Printers and Other Hardware** icon.  
And then click the device you want to revert.
- 4 On the **Hardware** tab, click **Properties**.
- 5 On the **Driver** tab, click **Update driver**.
- 6 Follow the instructions that appear on your screen. You can have Windows search for the driver, or point to the driver's location yourself.

Or:

- 1 Click **Start** on the taskbar.
- 2 Click **My computer** from the menu.
- 3 Click **View system information** on the left of the window.
- 4 Click the **Hardware** tab, then click **Device Manager**.

- 5 Double-click the option corresponding to the device you installed, then double-click your device. The **Properties** dialog box appears.
- 6 Click the **Driver** tab.
- 7 Click **Update driver**.  
The driver is updated.

 To update your device driver, you must be logged on to your computer with an administrator account.

## Uninstalling a driver

Leave the device connected to your computer while uninstalling the driver.


To uninstall the driver, proceed as follows:

- 1 Click **Start** on the taskbar.
- 2 Click **Control Panel**.
- 3 Click the **Printers and Other Hardware** icon.  
And then click the device you want to revert.
- 4 On the **Hardware** tab, click **Properties**.
- 5 On the **Driver** tab, click **Uninstall**.
- 6 If you are prompted to restart your computer, click **Yes**.  
The **Uninstall** button is unavailable if removing the driver would make your device unusable.

Or:

- 1 Click **Start** on the taskbar.
- 2 Click **My computer** from the menu.
- 3 Click **View system information** on the left of the window.
- 4 Click the **Hardware** tab, then click **Device Manager**.

- 5 Double-click the option corresponding to the device you installed, then double-click your device.  
The **Properties** dialog box appears.
- 6 Click the **Driver** tab.
- 7 Click **Uninstall**.  
The driver is uninstalled.

 To uninstall your device driver, you must be logged on to your computer with an owner account.

## Restoring a driver

System Restore is a feature of Microsoft® Windows® XP that restores your computer to a previous state, if a problem occurs, without losing your personal data files.


System Restore monitors changes to the system, and it automatically creates easily identified restore points. These restore points allow you to revert the system to a previous time. They are created daily and at the time of significant system events (such as when an application or driver is installed).

To revert to your previous driver, proceed as follows:

- 1 Open the device that is not working correctly in **Control Panel**.  
To open the device:
  - Click **Start** on the taskbar.
  - Click **Control Panel**.  
The **Control Panel** window appears
  - Click the **Printers and Other Hardware** icon.
  - And then click the device you want to revert.
- 2 On the **Hardware** tab, click **Properties**.
- 3 Click the **Driver** tab.
- 4 On the **Driver** tab, click **Roll Back Driver**.

Or:

- 1 Click **Start** on the taskbar.
- 2 Click **My computer** from the menu.
- 3 Click **View system information** on the left of the window.
- 4 Click the **Hardware** tab, then click **Device Manager**.
- 5 Double-click the option corresponding to the device you installed, then double-click your device. The **Properties** dialog box appears.
- 6 Click the **Driver** tab.
- 7 On the **Driver** tab, click **Roll Back Driver**.  
You have your previous driver back.

 You must be logged on to your computer with an owner account in order to complete this procedure.

Restoring your computer does not affect or change your personal data files.

For more information about System Restore, see Windows® Help.

## Downloading drivers

Please note it is possible to download the latest versions of drivers for your computer on our website. Just click the following link to access it: [www.vaio-link.com](http://www.vaio-link.com)

To download the latest drivers, proceed as follows:

- 1 Go to [www.vaio-link.com](http://www.vaio-link.com) and choose your language.
- 2 Click the **VAIO User** button.
- 3 Fill in the two codes and enter the site.
- 4 Select **Downloads** and follow the procedure.  
A list of available downloads appears.
- 5 Choose the appropriate driver and follow the online instructions to download it.  
To install your driver, follow the instructions you downloaded with the driver.

## Using the product recovery CD-ROMs

The Product Recovery CD-ROMs supplied with your computer allow you to perform a full system recovery, and help you reinstall individual applications and device drivers manually.

- ❑ Perform an **Application Recovery** to:
  - ❑ Reinstall an individual driver if a device is not functioning properly.
  - ❑ Reinstall an individual application if you have problems running it.
- ❑ Perform a **System Recovery** in the following cases:
  - ❑ In the event of a serious system crash.
  - ❑ If you want to modify the size of the hard drive partitions.
- ! You can only use these product recovery CD-ROMs on the Sony computer they came with and not on any other Sony PC or other manufacturer's PC.
- ❑ Performing an application recovery ([page 94](#))
- ❑ Performing a system recovery ([page 95](#))
- ❑ Aborting the system recovery process ([page 101](#))

## Performing an application recovery

The final CD in the set of product recovery CD-ROMs contains most of the applications that were preinstalled on your computer. Reinstalling a program from this application CD can fix the problems encountered if it does not run correctly anymore, or if Windows® is having a problem running a device.

To perform an application recovery, proceed as follows:

- 1 Turn on your computer (using AC power only) and wait until Windows® has booted up.
- 2 Insert the **final** product recovery CD-ROM into the disc drive.
- 3 Open the drive through **My Computer** and open the **Apps** folder.
- 4 Open the folder of the application you want to reinstall.
- 5 Double-click the **Setup** file.
- 6 Follow the instructions in the **Installer**.

 You must run the final product recovery CD-ROM from Windows®.

The application recovery does not run from DOS.

When performing an application recovery, you do not lose any data on your hard disk.

In most cases, you are advised to uninstall an application before reinstalling it.

## Reinstalling a device driver from the application CD

Some applications or peripherals require specific drivers which are not found on the Windows® operating system.

The final CD in the set of product recovery CD-ROMs contains the drivers you need for the preinstalled hardware devices. Reinstalling a driver from this CD can fix the problems encountered if Windows® is having a problem running a device. For more details on managing drivers, please see **Managing drivers (page 85)**.

To reinstall/update a device driver, proceed as follows:

- 1 Turn on your computer (using AC power only) and wait until Windows® has booted up.
- 2 Insert the **final** product recovery CD-ROM into the disc drive.
- 3 Open the drive through **My Computer** and open the **Drivers** folder.
- 4 Check that the driver you require appears in the folder.
- 5 Click **Start** on the taskbar.
- 6 Click **Control Panel, Performance and Maintenance**, then **System**.
- 7 On the **Hardware** tab, select **Device Manager** and double-click the device you want to update.
- 8 On the **Driver** tab click **Update Driver**.  
Follow the instructions that appear on your screen. You can have Windows® search for the driver, or point to the driver's location yourself.

## *Performing a system recovery*

The system recovery process allows you to:

- 1 Reinstall an image of the hard disk as it was before you started using your computer.  
In the event that your system is seriously damaged, for example, if Windows® does not work as it should, or your PC behaves abnormally, the system recovery will completely reinstall the originally configured system on your C: drive.
- 2 Change the sizes of the two available hard drive partitions, or delete the partitions altogether.  
If you decide to modify the size of your partitions, the existing data on both C: drive and D: drive will be deleted (see **Using partitioned drives (page 96)**).



## Notes on performing a system recovery


- ❑ The recovery process can last up to sixty minutes, and in this time you will be prompted to change CDs.
- ❑ You can recover only the software bundled to your computer. It does not work for the software you have installed subsequently or the data you have created.
- ❑ This procedure recovers the entire system, which means you cannot choose to only recover Windows®.
- ❑ Make sure that your computer is connected to the AC power supply (not to the battery) before you attempt a system recovery.
- ❑ When the recovery is performed, you are recommended to remove the recovery CD-ROM from the drive before restarting the computer.
- ❑ Notebooks only: To perform a system recovery, the notebook should not be docked (you must disconnect the docking station\*, unless your CD-ROM drive is on the docking station).

\* Depending on your model.

## Using partitioned drives

In **My Computer** you may have noticed the availability of two drive partitions (C: and D:). Your hard disk drive comes from the factory with 2 logical partitions. This does not mean that your computer contains two physical hard disks.

When you start using your computer, your C: partition (also referred to as C: drive) contains all the files required by Windows® and other pre-installed software, while the D: drive is empty. The D: drive is the ideal storage space for all your documents and files, especially larger ones like digital motion pictures captured by DVgate.

 Although you can perform a system recovery and change the partition settings in order to have one C: drive only, this option is not recommended for using video editing applications like DVgate.

To optimise data storage, use the C: drive to install new applications, and save all your documents and files to the D: drive. Moreover, doing so will prevent the loss of your data in case you need to perform a system recovery.

Do not try to add, delete, or resize partitions unless you really need to. Changing partition settings might delete all your files on the hard disk.

If you need to perform a system recovery, but do not want to lose all the data stored on your hard disk, copy all the files you want to keep on the D: drive. During the system recovery process, choose to keep the current partition information. Doing so will keep your D: drive unchanged after the recovery process.

If you do need to change the size of your partitions, you can do so by choosing **Option Recovery** in the system recovery set-up process. In this case, it is important to be aware that all data on your hard disk will be deleted. If you need to keep existing files, make sure you back them up before performing the system recovery.

## Starting the system recovery procedure

To start the system recovery, proceed as follows:

- 1 Turn on your computer (using AC power only) and insert the first system recovery CD-ROM into the disc drive.
- 2 If you are still able to access Windows<sup>®</sup>, shut down your computer (**Start/Turn Off Computer/Turn off**)\*.
- 3 Wait 10 seconds then turn the computer back on.
- 4 The system starts to read the CD automatically and you are asked to wait.
- 5 Click **Next** in the window that appears.
- 6 Read the introduction and click **Next**.  
You can now choose the nature of the recovery.

\* If your system is severely damaged and you can no longer access Windows<sup>®</sup>, you will have to turn off the computer by pressing the power button for longer than four seconds. Wait for ten seconds before pressing the button again to turn the power on.

## *Recovering the system without changing partition sizes*

To completely restore the original software, drivers and settings on your computer without changing the partition sizes, choose the first option and apply a Default System Drive Recovery. Performing this recovery means that you will lose all the data stored on your C: drive, but data on your D: drive will remain.

You should allow one hour for the recovery process.

To perform the Default System Drive Recovery, proceed as follows:

- 1 Select the button next to **Default System Drive Recovery (Recommended)**.
- 2 Click **Next**.  
You are asked if you are sure you want to recover the system.
- 3 To start the procedure, click **Next**.
- 4 Click **Yes** to confirm.  
The recovery process starts.
- 5 When asked to do so, remove the CD and insert the next one.
- 6 When the process is finished, click **OK**.
- 7 Click **Next** in the window that appears.
- 8 Remove the CD from the drive and click **Finish**.  
Your system is restored to its initial settings and reboots automatically.

## *Recovering the system with modified partition sizes*

To have the option of changing the partition sizes before completely restoring the original software, drivers and settings on your computer, choose **Option Recovery**.

Changing the partition sizes of the two hard drives means that you will lose all the data stored on both your C: drive and your D: drive.

You should allow one hour for the recovery process.

To perform a recovery with options, proceed as follows:

- 1 Select the button next to **Option Recovery**.
- 2 Click **Next**.

You now have three options:

- Default System Drive Recovery, (see **Recovering the system without changing partition sizes (page 98)**).
- Change Partition Size and Recover.
- Recovery To Originally Shipped State.

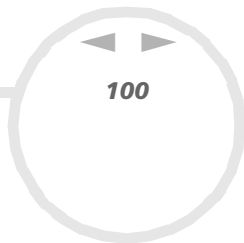
### *Manually changing partition sizes*

Choosing **Change Partition Size and Recover** allows you to manually select the size of your C: drive, leaving the remaining gigabytes to the D: drive. Meanwhile, all current partition sizes are deleted, the hard disk is reformatted, and all the original software is restored as with a standard system recovery.

You should allow one hour for this process.

To manually change the partition sizes and perform a system recovery, proceed as follows:

- 1 Select the button next to **Change Partition Size and Recover**.
- 2 Click **Next**.
- 3 In the following screen, set the size of your C: drive in gigabytes, or choose to restore the default size by pressing **Default**.
- 4 Click **Next**.
- 5 Read the summary of the recovery process about to be performed and click **Next** to start the process.
- 6 Click **Yes** to confirm.
- 7 When asked to do so, remove the CD and insert the next one.
- 8 When the process is finished, click **OK**.



- 9 Click **Next** in the window that appears.
- 10 Remove the CD from the drive and click **Finish**.  
Your system's settings are changed and your computer reboots automatically.

### *Resetting the default partition sizes*

If you changed the partition sizes since you bought your Sony computer, choosing **Recovery To Originally Shipped State** allows you to reset the hard drive to its original size. Meanwhile, the current partitions are deleted, the hard disk is reformatted, and all the original software is restored as with a standard system recovery.

You should allow one hour for the recovery process.

To restore the default size of the hard drive, proceed as follows:

- 1 Select the button next to **Recovery To Originally Shipped State**.
- 2 Click **Next**.
- 3 Read the summary of the recovery process about to be performed and click **Next** to start the process.
- 4 Click **Yes** to confirm.
- 5 When asked to do so, remove the CD and insert the next one.
- 6 When the process is finished, click **OK**.
- 7 Click **Next** in the window that appears.
- 8 Remove the CD from the drive and click **Finish**.  
Your system is restored to its initial settings and reboots automatically.

## Aborting the system recovery process

Before the actual recovery process begins, the VAIO System Recovery Utility makes it easy to cancel any settings you may have made. Most screens remind you about the loss of data that will incur and you can either to go back to the previous screen (press **Back**), or abort the recovery setup altogether. To abort, remove the recovery CD, press **Cancel**, and click **Yes** to confirm.

However, once the recovery process has started, cancelling the job will delete all the current data on your C: drive. If you have made changes to the partition settings, you will lose all data on both hard drive partitions.

 If you do not remove the CD before pressing **Cancel**, the system recovery will start again.