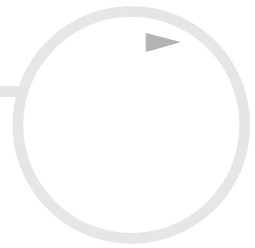


Software Guide

PCG-V505 series

The Wacom logo is rendered in a blue, stylized font. It features a wavy line on the left, a small circle in the middle, and the letters 'IO' on the right.

Read this first

Notice

This product contains software owned by Sony and licensed by third parties. Use of such software is subject to the terms and conditions of licence agreements enclosed with this product. Software specifications are subject to change without notice and may not necessarily be identical to current retail versions. Updates and additions to software may require an additional charge. Subscriptions to online service providers may require a fee and credit card information. Financial services may require prior arrangements with participating financial institutions.

© 2003 Sony Corporation. All rights reserved.

Reproduction in whole or in part without permission is prohibited.

End user software licence agreement

This End User Software Licence Agreement (the **EULA**) is a legal agreement between you and Sony Corporation (hereinafter referred to as **Sony**), a corporation organised under Japanese Law, the manufacturer of your **Sony** computer system (the **SONY HARDWARE**). Please read this EULA carefully before installing or using the software distributed together with this EULA (the **SONY SOFTWARE**). By installing or using the SONY SOFTWARE, you agree to be bound by the terms of this EULA. You may use the SONY SOFTWARE only in connection with the use of the SONY HARDWARE. SONY SOFTWARE is licensed; not sold.

Notwithstanding the foregoing, software distributed together with separate End User Software Licence Agreement (the **Third Party EULA**), including but not limited to Windows[®] operating system provided by Microsoft Corporation, shall be covered by the Third Party EULA.

If you do not agree to the terms of this EULA, please return the SONY SOFTWARE together with the SONY HARDWARE to the place where you obtained it.

1. Licence. This SONY SOFTWARE and the related documentation are licensed to you by **Sony**. This EULA allows you to use the SONY SOFTWARE for your personal use for a single SONY HARDWARE outside a network and only to make one copy of the SONY SOFTWARE in machine-readable form for back-up purposes only.

2. Restrictions. The SONY SOFTWARE contains copyrighted material and other proprietary material. In order to protect them, and except as permitted by applicable law, you may not decompile, reverse engineer or disassemble the SONY SOFTWARE in whole or in part. Except for the transfer of the SONY SOFTWARE together with the SONY HARDWARE and prior agreement of the recipient to be bound by the terms and conditions of this EULA, you may not sell or rent the SONY SOFTWARE and its copy to any third party.

3. Limited Warranty. Sony warrants the media on which the SONY SOFTWARE is recorded to be free from physical defects for a period of ninety (90) days from the date of purchase as evidenced by a copy of the receipt. During the applicable warranty period, **Sony** will replace free of charge such media proved to be defective, provided they are returned properly packaged to the place where you obtained it, together with your name, address, and proof of date of purchase. **Sony** will have no responsibility to replace media damaged by accident, abuse, or misapplication. The above limited warranty replaces all other representations, conditions and warranties, whether express or implied, by statute or otherwise and **Sony** expressly disclaims all other warranties and all conditions including, but not limited to, the implied warranties and/or conditions of satisfactory quality and fitness for a particular purpose. The terms of this limited warranty do not affect or prejudice your statutory rights as an ultimate consumer, neither do they limit or exclude any liability for death or personal injury caused by the negligence of **Sony**.

4. Termination. This EULA is effective until terminated. You may terminate this EULA at any time by destroying the SONY SOFTWARE, related documentation, and all copies thereof. This EULA will terminate immediately without notice from Sony, if you fail to comply with any provision of this EULA. Upon termination you must destroy the SONY SOFTWARE, related documentation, and all copies thereof.

5. Governing Law. This EULA shall be governed by and construed in accordance with the laws of Japan.

Should you have any questions concerning this EULA or this limited warranty, please refer to the Customer Service Guide on how to contact VAIO-Link.

ENERGY STAR®

As an ENERGY STAR® Partner, **Sony** has determined that this product meets the ENERGY STAR® guidelines for energy efficiency. The **International ENERGY STAR® Office Equipment Program** is an international program that promotes energy saving through the use of computers and their office equipment. The program backs the development and dissemination of products with functions that effectively reduce energy consumption. It is an open system in which business proprietors can participate voluntarily. The targeted products are office equipment such as computers, displays, printers, facsimiles and copiers. Their standards and logos are uniform among participating nations.

ENERGY STAR is a U.S. registered mark.



Trademarks

Sony, DVgate, Hotkey Utility, Memory Stick Formatter, MovieShaker, PictureGear Studio, Network Smart Capture, SonicStage, Sony Notebook Setup, Sony Style Imaging, UI Design Selector, VAIO Edit Components, VAIO Web Phone, Memory Stick, the Memory Stick logo, VAIO and the VAIO logo are trademarks of Sony Corporation.

The Windows and Windows 2000 Professional logo are registered trademarks of Microsoft Corporation.

i.LINK is a trademark of Sony used to designate that a product contains an IEEE1394-connection.

Adobe, Adobe Photoshop Elements and Adobe Acrobat Reader are trademarks of Adobe Systems Incorporated.

WinDVD for VAIO is a trademark or registered trademark of InterVideo Inc.

QuickTime and the QuickTime logo are trademarks used under licence. QuickTime is registered in the U.S. and other countries.

RealOne Player is a trademark or registered trademark of RealNetworks, Inc. in the U.S. and other countries.

PowerPanel is a trademark of Phoenix Technologies Ltd.

Symantec Norton AntiVirus is a trademark of Symantec Corporation.

EverQuest is a registered trademark of Sony Computer Entertainment America Inc.

Drag'n Drop CD is a registered trademark of Easy Systems Japan Ltd.

All other names of systems, products and services are trademarks of their respective owners. In the manual, the ™ or ® marks are not specified.

All other trademarks are trademarks of their respective owners.

Specifications are subject to change without notice.


Registering your VAIO

It only takes a few moments to register your Sony VAIO computer.

By registering your computer, you can take advantage of Sony's commitment to quality customer support and receive the following benefits:

- ❑ **Club VAIO** – Online support, tutorials, tips and tricks, news, news forums, competitions, free downloads and software updates.
- ❑ **VAIO-Link** – If you are experiencing any problems with your computer, you can check the VAIO-Link website for a possible solution: <http://www.vaio-link.com>.
- ❑ **Guarantee** – Protect your investment. See the **Guarantee** sheet for the terms and conditions and refer to your **Troubleshooting Guide** for more information.

To register your Sony VAIO computer, proceed as follows:

- 1 Set up an Internet connection (see also **Configuring your modem (page 93)**).
- 2 Double-click the **VAIO Online Registration**  icon on the desktop.
You can also find the link on the **Start** menu under **Programs**.
- 3 Change your language if necessary and click **Next**.
- 4 Click **Register Now** and then click **Next**.
This brings you to the website <https://registration.sonystyle-europe.com/vaio/registration.asp>.
- 5 Fill in your first and last name.
The serial number of your computer is entered automatically.
- 6 Click **Submit**.
- 7 Enter your details as required and click **Submit**.
Your VAIO is registered and a thank you screen appears.
If you entered an email address, you will receive a confirmation email from Club VAIO.



Once you have registered, you can access VAIO Online Registration at any time to update your details without filling in the survey.

About the software delivered with your computer

This section gives you an overview of what you can do with the software delivered with your computer.

The software package includes preinstalled software as well as applications which you can install from the supplied application CD. Please see the printed **Specifications** sheet to see what software is preinstalled, and then the **Application CD Guide** booklet for installation details.

Your preinstalled software can mostly be found under **Start/Programs**.

Sony software

DVgate



Sony Electronics



DVgate is a kit of 3 complementary applications: DVgate Motion, DVgate Still, and DVgate Assemble. This collection makes it easy to select and edit digital video clips, then bring them together into a professional-looking home video. Use i.LINK™ to connect your digital video camera, and the computer operates as an editing desk that can capture, preview, cut and assemble your selection and save the sequences in AVI or MPEG 1 & 2 formats. DVgate Still displays digital video images sent from a digital videocassette recorder or a digital video camera recorder (only possible if you have DV In/Out on your camera or at least a DV Out for DV Gate Still), and saves them as graphic files on your hard drive.

See **Using DVgate (page 17)**.



EverQuest

Sony Computer Entertainment America Inc.

EverQuest is a popular software game that can be played simultaneously by multiple people on the Internet. The link placed on your Windows® desktop brings you to the EverQuest website where you can find out more.


<http://everquest.station.sony.com>



Memory Stick Formatter

Sony Electronics

Memory Stick Formatter is a special application for formatting Memory Sticks™. Use this software whenever you reformat Memory Sticks™. Moreover, you may be able to reformat Memory Sticks™ that can not be identified by Windows® by using this software. Memory Stick Formatter supports Memory Sticks™ with the following capacities: 4, 8, 16, 32, 64 and 128 MB.

 When you format Memory Sticks™ with this software, all data on the Memory Stick™ will be lost. If necessary, take a backup of your data before formatting.



MovieShaker

Sony Electronics

MovieShaker® creates personal movies - complete with transitions, special effects, background music, and text. All you do is import your clips, pick the tune you want and MovieShaker® does the rest. You can also choose to take control and produce your very own movie. You choose the exact order of clips, special effects, and transitions. You can also import your own music and MovieShaker® will automatically match the length of the song to the length of your movie.

See **Using MovieShaker (page 34)**.



Network Smart Capture

Sony Electronics

Network Smart Capture is an application for capturing still and moving pictures using a digital camera or a USB webcam connected to your computer. This software allows you to view the photos you capture and send them to various destinations. It includes a web camera feature which you can set up to capture images at timed intervals, without you being in the room!

See **Using Network Smart Capture (page 40)**.



PictureGear Studio

Sony Electronics

PictureGear Studio is easy-to-use software that is designed to help you get the most enjoyment out of your photographs taken with a digital camera. With the PictureGear Studio software, you can easily load photos into your computer, create photo albums and make prints.

See **Using PictureGear Studio (page 64)**.



PowerPanel

Phoenix Technologies

The PowerPanel utility controls the power management of your computer and provides key information about system activity and battery life. Automatic power management selects the most appropriate profile, depending on the application you are working with and the conditions of use.

See **Managing power with PowerPanel (page 85)**.



SonicStage

Sony Electronics

SonicStage is a software application that uses OpenMG technology, a copyright protection technology developed by Sony Corporation and designed to allow recording and playback of digital music data on a personal computer. Once the data is encrypted and recorded onto the hard disk, OpenMG technology allows it to be played back on the PC but prevents unauthorised distribution. The purpose of OpenMG technology is to create an environment in which larger quantities of high-quality music can be distributed without subsequent unauthorised distribution of the music files.

The SonicStage software encrypts and manages music files either downloaded to a personal computer by using the EMD services or adopted (or created) from your own CD or the Internet.

See **Managing audio files with SonicStage (page 54)**.



Sony Notebook Setup

Sony Electronics

Use Sony Notebook Setup to consult system information, specify preferences for system behaviour, and set up a power-on password for your Sony computer.

See **Setting up your notebook with Sony Notebook Setup (page 83)**.



Sony Style Imaging (shortcut on the desktop)

Sony Electronics

Sony Style Imaging is an easy way to share your digital pictures and videos with family and friends. Use Sony Style Imaging with Network Smart Capture and MovieShaker to make the most of your images and movies. When you sign up as a Sony Style Imaging member, you can store your pictures and even order prints. Go to the following website to join for FREE:

<http://www.sonystyle-imaging.com>



UI Design Selector

Sony Electronics

You can change the window design of the Sony software compatible with UI Design Selector.

See **Changing your windows design with the UI Design Selector program (page 94)**.

VAIO Edit Components

Designed as a plug-in for Adobe® Premiere®, VAIO Edit Components includes special features to support your i.LINK™-DV devices, so you can produce superior quality home movies even after editing. Now you can control the DV device from your computer, import and edit the movie, and then export it back to the DV device. To be able to use the Sony software VAIO Edit Components, you must first install Adobe® Premiere® version 6.0* on your computer.

* available for purchase.



Product Recovery CD-ROMs

Sony Corporation

The product recovery CD-ROMs allow you to reinstall the system, the software shipped with your computer and the bundled device drivers if they are corrupted or accidentally erased. Reinstalling an individual device driver may correct a problem you are experiencing with your computer, without you having to recover the entire system. The final product recovery CD-ROM is also referred to as the "Application CD".

! You can only use the Recovery CD-ROMs on the Sony computer you purchased, and not on any other Sony PC or other manufacturer's PC.

See **Using the product recovery CD-ROMs (page 110)**.

Operating system and other software



Windows[®] 2000 Professional with Service Pack 3

Microsoft Corporation

Microsoft[®] Windows[®] 2000 makes your computer work better by integrating tightly with the Internet and networks and providing better system performance and easier system diagnostics and maintenance. With Windows[®] 2000, your system takes better advantage and has improved support of the latest graphics, sound, and multimedia technologies. Easy addition and removal of peripheral devices, and the convergence of the TV and PC in your home are also featured.

This exciting operating system is built on the groundbreaking features introduced with Windows[®] NT. At the same time, Windows[®] 2000 maintains the best support for older Windows[®]-based applications and technologies.

For questions and technical assistance, go online to:

<http://support.microsoft.com/directory>



Internet Explorer 6.0

Microsoft Corporation

Internet Explorer is the Microsoft Internet browser allowing you to surf the World Wide Web. The Setup Wizard configures your computer to connect automatically to your service provider. A full e-mail package enables you to send and receive mail - including attached files - across the Internet. NetMeeting, Outlook Express and Microsoft Chat are just some of the components bundled with Internet Explorer 6.0. Internet Explorer 6.0 also includes 128-bit encryption, the highest possible level of protection for all your Internet communications, including credit card use and financial transactions. A complete online tutorial helps new users become comfortable using the Internet.

For questions and technical assistance, go online to:

<http://support.microsoft.com/directory>



Adobe® Acrobat® Reader 5.1

Adobe Systems Incorporated

Acrobat® Reader software allows you to view, navigate, and print electronic documents in Adobe Portable Document Format (PDF), an open file format that is intended to preserve the conformity of documents created on all major computer platforms. With Acrobat® Reader, you can open and view PDF files from within your Web browser by clicking a PDF file embedded in an HTML file. You quickly see the first page while the rest of the document is being downloaded.

For questions and technical assistance, go online to:

<http://www.adobe.com>



Adobe® Photoshop® Elements 2.0

Adobe Systems Incorporated

Adobe® Photoshop® Elements introduces the next generation of image editing with powerful new features that offer something for every user. Delivering the broadest and most productive toolset available, Photoshop® Elements helps you explore your creativity, work at peak efficiency, and achieve the highest quality results across all image media.

For questions and technical assistance, go online to:

<http://www.adobe.com>



Drag'n Drop CD

DigiOn / Easy Systems Japan

Drag'n Drop CD is designed to be the most simple software to make your own CDs. Users can create their own audio CDs or data CDs that can be read in most PCs. Drag'n Drop CD can also create your own backup CD from the original CD that you own. The operation is simple: select the files that you want to write, and drag and drop them into an appropriate box that corresponds to the CD format. After dropping them, simply press the **CD Create** button.

For questions and technical assistance, go online to:

<http://www.easy.co.jp/dde/sony>



QuickTime 5.0

Apple

QuickTime is the Apple technology that makes video, sound, music, 3D and virtual reality come alive for your Internet browser and Windows.

For further information, see the website at:

<http://www.apple.com/quicktime>



RealOne Player

RealNetworks

RealOne Player is the RealNetworks video and audio player which lets you manage all major types of media in one. Its many features allow you to access over 3000 radio stations with music, news and sports; play and save audio files and create your own audio CDs; and organise your audio and video clips locally before transferring them to portable storage devices.

For further information, see the website at:

<http://www.real.com>



Symantec Norton AntiVirus (as setup on the hard drive)

Symantec

This software package includes a 90-day free subscription to virus definition updates.

With Norton AntiVirus, you can scan files, folders, or entire drives for viruses, and quarantine infected files for submission to the Symantec AntiVirus Research Centre (SARC). Files submitted to SARC are analysed and the results are reported automatically within seven days. When you configure Norton AntiVirus adequately, your computer is safe. Norton AntiVirus can automatically check boot records for viruses at system startup, check programs for viruses at the time you use them, scan all local hard drives for viruses once per week, and monitor your computer for any activity that might indicate the work of a virus in action. It can also scan files you download from the Internet and check floppy disks for boot viruses when you use them.

You must launch the Norton AntiVirus installation, and you will then be prompted to update the virus definitions. This is normal as new viruses will have come out since your VAIO left the factory. For more information, see the online help files and the website at:

<http://www.symantec.com/techsupp>



VAIO Web Phone

CallServe Communications Ltd.

Once you have purchased the USB telephone, this Internet Telephone enables you to make telephone calls from your PC via the Internet to any other phone. You can make international calls at significantly lower prices and make phone calls and surf the web at the same time - on just one phone line.

For more information, see the online help files and the website at:

<http://www.callserve.com/EN/help/index.asp>



WinDVD for VAIO

InterVideo, Inc.

InterVideo Inc.'s WinDVD for VAIO is a simple-to-use DVD player. WinDVD for VAIO combines all the features you would expect to find on a standard consumer DVD player, in addition to some very advanced functionalities, full precision video decoding, a choice of user interfaces and video display options. You can play DVD movies, interactive DVD titles, MPEG video content, video and audio CDs. WinDVD for VAIO automatically determines the type of disc in the DVD drive and uses the correct playback method.

For questions and technical assistance, go online to:

<http://www.intervideo.com>



Using Video software

The following video software applications are delivered with your VAIO. Check the printed **Specifications** sheet to see whether they are preinstalled. Then read the printed **Application CD Guide** for installation details, if applicable.

- ❑ Using DVgate ([page 17](#))
- ❑ Using MovieShaker ([page 34](#))
- ❑ Using Network Smart Capture ([page 40](#))

Using DVgate

DVgate is a software application that enables you to capture and then edit images taken with digital video devices (DV devices), such as digital video camera recorders, on your personal computer. It also gives you the ability to output the edited material for recording on a DV device.

With DVgate, you can easily perform image editing with your computer and a DV device.

DVgate consists of 3 applications:

- ❑ **DVgate Motion;**
- ❑ **DVgate Still;**
- ❑ **DVgate Assemble.**



Depending on the computer settings, frames may be lost during video capture and frame duplication when recording edited videos. Please make sure you configure your computer according to the recommended settings to prevent this from happening. To configure your computer to use DVgate, refer to the Online help of DVgate.

Using DVgate Motion

With DVgate Motion you can capture video and record edited videos on a DV device.

❑ **Capturing videos:**

You can **automatically** or **manually** capture any scene or portion of the images recorded on a DV device, such as a digital video camera recorder. What is more, you can specify the exact scenes that you want to capture while watching the tape playback on the monitor. You can then choose to save the selected scenes as separate files or as one file.

❑ **Recording edited video on a DV device**

You can record the edited video on tape using a DV device, such as a digital video camera recorder*, connected to the computer. With DVgate, you are not limited to recording single clips, but you can record a series of clips on the DV device at one time.

To launch DVgate Motion, proceed as follows:

- 1 Connect the camera to the computer with the i.LINK™ cable and turn on the camera.
- 2 Click **Start, Programs, DVgate, DVgate Motion. DVgate Motion** and the **Monitor** windows appear.

* The digital video camera recorder must have a DV-IN connector.

Capturing videos


You can automatically or manually import videos onto your computer.

To automatically import videos onto your computer, proceed as follows:

- 1 Make sure you have installed DVgate from the application CD, if applicable (see the printed **Specifications** sheet and **Application CD Guide**).
- 2 Launch **DVgate Motion**.
- 3 Click the **down** arrow and select **Import-Auto** from the **Mode** drop-down list.
Use the DVgate camera controls buttons to play, rewind or fast forward the tape to the selected time code to begin capturing.



- 4 Press **Play** to start the video.
The video begins to play in the **Monitor** window.

- 5 Click **Mark** to mark the beginning of the first segment.
The first frame of the segment to be captured is displayed in the **In/Out list** window.
Click **Mark** again to mark the end of the segment to be captured.
The last frame of the segment to be captured is displayed in the **In/Out list** window.
Continue to mark as many segments as you want.
 - 6 Click **Capture** to import the selected video segment or click **Capture All** to import them all at once.
The **Save as a file** window appears.
 - 7 Select the location to save the file.
 - 8 Click the **Save** button.
DVgate captures the segments.
The **Capturing complete** message appears.
 - 9 Click **OK** in the **DVgate Motion** window to finish.
Information about the capturing process is displayed in the **Report** window.
 - 10 Click **OK**.
 - 11 Exit DVgate Motion.
The **Dvmotion2** window appears on the screen.
You can then save the **In/Out list**, which allows you to capture the same video sequences later on, or change the In/Out settings.
-  Make sure that the camera is in Video Tape Recorder mode (VTR) when capturing or playing back video from or to a tape.
If you want to manually import video onto your computer, refer to the DVgate online help file.

Recording edited videos on a DV device

To record edited videos on a DV device, proceed as follows:

- 1 Adjust the recording correction values.
- 2 Add files to the Record List.
- 3 Record remotely or manually the video on the DV device.

Adjusting the recording correction values

To ensure accuracy in the recording, you can specify recording correction values. Adjustment of the recording correction values is especially important when performing splice recording. You can choose to specify the values yourself or to have them automatically adjusted by using the automatic calibration feature. The values generated by the automatic calibration feature are usually correct.

To automatically adjust the recording correction values, proceed as follows:

- 1 Launch DVgate Motion.
- 2 Click the **down** arrow and select **Export - Auto** from the **Mode** drop-down list.
- 3 Select **Adjust on Recording...** from the **Settings** menu.
The **Adjust on Recording** dialog box appears.
- 4 Click the **AutoAdjust** button.
DVgate Motion activates the connected DV device and automatically finds the adjustment values.
- 5 Click **OK**.

 To manually adjust the recording correction values, refer to the DVgate online help file.

Adding files to the Record List

To add files to the Record List, proceed as follows:

- 1 Launch **DVgate Motion**.


2 Click **Add** in the **DVgate Motion – AVI file list**.

The **Add** dialog box appears.

3 Select a file and click **Open**.

The specified file is added and the serial number, first and last images, time code, file length and file name are displayed.

- ★ DVgate Motion adds all serial numbered files with the same name if you select **Add all divided files saved with the same name**. Serial numbered files are created when you specify to save files as multiple files in DVgate Motion and DVgate Assemble.

 All newly added files are appended to the end of the list.

You can drag multiple files at one time; however, the order in which they are added is unpredictable.

You can record AVI files with different sound modes on a DV device, but about one second of no sound (depending on the DV device) may occur at the point where the sound modes change.

You can only add AVI files using DV Codec as video compression; MPEG files are not supported.

When recording a video sequence, make sure that all images are saved in the same mode. Recording in different modes might cause sound or image distortions during playback.


After adding the files to the Record List, you can still change the order of the files, add or delete files.

To change the order of the files in the Record List, proceed as follows:

- 1 Click the file you want to move while holding down the mouse button.
- 2 Drag the file to the appropriate position and then release the mouse button.

To remove a file from the Record List, proceed as follows:

- 1 Click the file you want to remove.
- 2 Click **Delete**.
The removed file is filled by the subsequent file and the files are renumbered.
Click **Delete All** to remove all files.


 You can select multiple AVI or still picture files from the Record List by clicking them while holding down the **<Shift>** or **<Ctrl>** key.

When you move multiple files, they are all moved together.

You can undo changes by choosing **Undo** from the **Edit** menu immediately after inserting, moving or deleting (a) file(s).
You can save a **Record List** for future use. Record List files can only be used in DVgate Motion.

To preview a clip, proceed as follows:

- 1 Select the file you want to preview in the **DVgate Motion – AVI file list** window.
- 2 Click **Preview**.
The **Monitor** window and the **Preview** window appear.
The **Monitor** window shows the first frame of the file.
Click the **Previous File** button or on the **Next File** button to select the file you want to preview.
Click **Preview All** to preview all the files shown in the list.

 **Previous File** and **Next File** are buttons for moving the preview from one selected file to another. They are not designed for navigation purposes within the list. Consequently, you cannot click them when only one file is selected. When you select only one file, **Previous File** and **Next File** do not function.

Recording on the DV device

You can automatically or manually export videos from your computer to a DV device.

To automatically export videos from your computer to a DV device, proceed as follows:

- 1 Connect the camera to the computer with the i.LINK™ cable and turn on the camera.
- 2 Launch **DVgate Motion**.
- 3 Click the **down** arrow and select **Export-Auto** from the **Mode** drop-down list.
- 4 Click the **Add** button in the **DVgate Motion - AVI file list** window and select the video file you want to export.
- 5 Click **Record** or **Record All**.
The **Output** dialog box appears.
- 6 Select the **Add blank image** option button.


- ❑ You can add blank frame(s) during recording if you select the **Append** option button in the **Output** dialog box.
Blank frame(s) can be placed in the following locations:
Head: A blank image is placed before the start of the video sequence during recording.
Tail: A blank image is placed after the end of the video sequence during recording.
Both: Blank images are placed before the start and after the end of the video sequence during recording.
- ❑ You can specify the length of a blank image by entering the number of frames in the **Length** box in the **Output** dialog box.

7 Click **OK**.

The **Output** dialog box closes and recording starts.

Video sequences are recorded on the DV device in the order in which they are arranged in the **Record List**.

- ★ Clicking **Record All** will send all the video files shown in the **Record List** to the connected device. Clicking **Record** will send only the video files selected from the **Record List** to the connected device.

 Even if you specify not to add blank frames, several blank frames are always placed at the end of the recorded segment regardless of the settings. This is to prevent image noise from being recorded when recording stops.

Do not quit or log off from Windows[®] while recording. Otherwise, recording will fail.

Disable the screen saver in Windows[®].

Do not start other applications or move any active window while recording.

Recording from the very beginning of the tape may not be successful if you record by controlling the video device through DVgate Motion.

Do not turn the power switch on the digital video camera recorder to **Camera** or turn it off while DVgate Motion is recording. Never switch the input sources when recording on a digital videocassette recorder as this might prevent recording.


If you want to export manually videos from your computer to a DV device, refer to the DVgate online help file.

Using DVgate Still

DVgate Still is an application that displays digital video images sent from DV devices such as a digital videocassette recorder or a digital video camera recorder and that captures them as still pictures.

The following functions are featured:

- ❑ Control the connected DV device and display a video image on the screen of your VAIO.
- ❑ Capture 30 frames of still pictures in total with respectively 15 frames in the forward and backward directions.
- ❑ Capture only one frame of a still picture.
- ❑ Save a captured still picture in BMP, JPEG, GIF or DVF format.


 The sound recorded with the image, is not played.

Capturing pictures


There are two capture modes in DVgate Still: the **Continuous Capture** mode and the **Single Frame Capture** mode.

- ❑ **Continuous Capture mode:**

If you capture pictures during **Play** mode, you can capture 30 frames of still pictures in total with respectively 15 frames in the forward and backward directions. All still pictures already captured, are lost. If you capture during **Pause** mode, you can capture only one frame of a still picture.

 Immediately after you capture during **Play** mode in **Continuous Capture** mode, the DV device pauses. **This is normal.**
- ❑ **Single Frame Capture mode:**

You can capture one frame of a still picture. The captured result is the same even if you capture during **Play** or **Pause** mode.


 Capturing 30 frames in **Continuous Capture** mode replaces all 30 frames. Capturing only one frame overwrites the first frame of the still picture, capturing the next frame overwrites the second frame, and so on.

To toggle between **Continuous Capture** mode and **Single Frame Capture** mode, proceed as follows:

- 1 Click **Settings** in the DVgate Still window.
- 2 Choose **Capture...**
The **Capture Settings** window appears.
- 3 Select the **Capture frames continuously** option button to capture in **Continuous Capture** mode.
Clear the **Capture frames continuously** option button to capture in **Single Frame Capture** mode.

To capture pictures, proceed as follows:

- 1 Make sure you have installed DVgate from the application CD, if applicable (see the printed **Specifications** sheet and **Application CD Guide**).
- 2 Connect the DV device to your computer.
- 3 Launch **DVgate Still (Start/Programs/DVgate/DVgate Still)**.
The **DVgate Still** window appears.
- 4 Set the DV device to the **Play** or **Pause** mode.
The video image appears in the **Monitor** window.
- 5 Click the **Capture** button.
The video image in the **Monitor** window is being captured.

 Dragging the slider in the **Capture** window to the left or right lets you display the still picture before or after the current one.

- ! If you exit DVgate Still without saving the captured still picture, it is cleared.
- ! Even if you attempt to capture continuous pictures, you may not be able to capture some frames. In this case, exit all applications other than DVgate Still and then retry to capture them.



Saving the captured pictures

You can save the still pictures displayed in the **DVgate Still - Still** window in either one of the following formats: BMP, JPG, GIF or DVF.

To save the captured pictures, proceed as follows:

- 1 Launch **DVgate Still** and capture images.
- 2 In the **DVgate Still - Still** window, select a still picture you want to save.



- 3 Click the **Save** button.
The **Save As** dialog box appears.
Use the **Location to Save** drop-down list to select a folder.
Select a file format from the **File Format** drop-down list.
- 4 Click **Save**.
The captured picture is saved.

Using DVgate Assemble

DVgate Assemble enables you to edit video files and still image files captured with DVgate Motion and DVgate Still. Afterwards you can splice them together to form one single file. You can save the resulting spliced video sequences as AVI, MPEG1, or MPEG2* format files.

To launch DVgate Assemble, proceed as follows:

- 1 Click **Start**.
- 2 Point to **Programs, DVgate** and then to **DVgate Assemble**.
The **DVgate Assemble** main window appears.


* Depending on your model.

Creating an Assemble List

You can create an **Assemble List** with files you want to splice together. Afterwards you can always edit the Assemble List by changing the order of the files and adding or deleting files.

To add files to an Assemble List, proceed as follows:

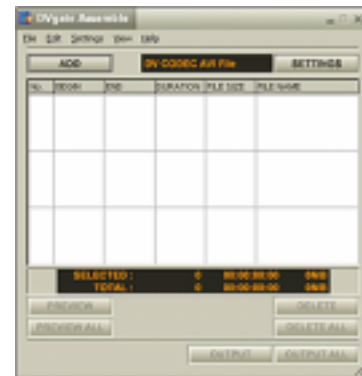
- 1 Make sure you have installed DVgate from the application CD, if applicable (see the printed **Specifications** sheet and **Application CD Guide**).
- 2 Launch **DVgate Assemble**.
- 3 Click the **Add** button.
The **Add** dialog box appears.
- 4 Choose **AVI file** in the **Files of type** drop-down box.
If you select **Add all divided files saved with the same name**, DVgate Assemble will add all serial numbered files with the same name to the list. Serial numbered files are files that are created when DVgate Motion saves files that are split and applies consecutive numbers to them. The numbers of the split files have 4 digits and increase one unit at a time starting with 0001.
- 5 Select a file and click **Open**.
The AVI file is added to the list.

 Imported files are added at the end of the Assemble List.

You can only add video files in AVI (DV CODEC) format, and still image files in BMP, JPEG, and GIF formats. Please see the help files for information on converting non-compatible AVI files.

When you add a still image file (BMP, JPEG, or GIF), the number of frames, converted size, and size conversion mode are shown.

You can save an Assemble List for future use. Assemble List files can only be used in DVgate Assemble.



Editing AVI files

You can edit the AVI files in the Assemble List for the exact scenes you want to use. For example, there is no need to recapture files even if you only want to use one particular scene from a longer video sequence originally captured with DVgate Motion. Note that the process of removing the exact scene is only enabled when one AVI file is selected from the Assemble List. However, this command is disabled when more than one file are selected.

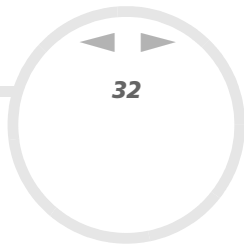
To edit the AVI files in the Assemble List for the exact scenes you want to use, proceed as follows:

- 1 Launch **DVgate Assemble**.
- 2 Select the AVI file you want to edit from the **Assemble List**.
- 3 Choose **Edit a clip...** from the **Edit** menu.
The **DVgate Assemble - Clip** dialog box appears.
- 4 Click the **Preview** button.
The video sequence of the selected file is played back.
You can move the playback position to the **Begin** point or the **End** point by clicking the **Begin** or **End** point of the image.
Click the **Begin** button when you see the scene to be used as the **Begin** point.
The **Begin** point image and the time code appear in the lower part of the dialog box.
Click the **End** button when you see the scene to be used as the **End** point.
The **End** point image and the time code appear in the lower part of the dialog box.
- 5 Click **OK**.
The AVI file is edited.

Combining still images with video images

To combine still images with video images, proceed as follows:

- 1 Launch **DVgate Assemble**.
- 2 Click the **Add** button.
The **Add** dialog box appears.
- 3 Select the image file type from the **Files of type** drop-down list.
- 4 Select your image file and click **Open**.
The image is added to the **Assemble List**.
- 5 Choose **Edit a clip...** from the **Edit** menu in the main window.
The **DVgate Assemble - Clip** dialog box appears.
- 6 Enter the insertion time in seconds or frames.
- 7 Turn the **Wide TV mode** on or off.
- 8 Select the screen size.
- 9 Adjust the height and width of still images when they are output:
 - Full size:** Enlarges the screen size to the full monitor size. The aspect ratio may change with this selection.
 - Original Size:** Retains the original size of the image, without reduction or enlargement.
 - Full size using aspect ratio as saved:** Enlarges the screen size to the maximum without changing the aspect ratio.
- 10 Click the **Settings** button.
The **Settings** window appears.
- 11 Select the final format of the combined file, choosing from AVI, MPEG1 or MPEG2 (if available)*.



12 Click **OK**.

The **Assemble List** appears.

13 Click **OK**.

The still and video images are combined.

* Choosing MPEG1 as the format will reduce the size of the file considerably.

Saving the edited video

To save an edited video sequence, proceed as follows:

- 1 Click the **Output** or the **Output All** button.
The **Save As** dialog box appears.
Information on the output file and the amount of free disk space is shown in the lower part of the **Save As** dialog box.
- 2 Select the location where you want to save the file and type the name of the file in the **File name** text box.
- 3 Click **Save**.
- 4 The **Outputting as an AVI file** dialog box appears and splicing begins.
- 5 The **DVassemble** window appears and displays the **Exporting/Save to an AVI file complete** message. The set time and the size that the file is split into are displayed when outputting an AVI file.
- 6 Click **OK**.
The edited video is saved.



When you click the **Output** button, only the files on the Assemble List that have been selected, are connected and output as a file. Clicking **Output All** means that all the files on the Assemble List are connected and output.

The file name is the name that was entered in the **Save As** dialog box. A 4-digit serial number is attached to the file name, e.g., test001-0001.avi, then test001-0002.avi, test001-0003.avi.

Using MovieShaker

MovieShaker can be used to create fun and innovative movies without any knowledge of film editing. In a few steps, motion pictures can be combined with special effects, still images (pictures), and music files and then saved in a format most computers can play.

To open MovieShaker, proceed as follows:

- 1 Make sure you have installed MovieShaker from the application CD, if applicable (see the printed **Specifications** sheet and **Application CD Guide**).
- 2 Click the **Start** button on the **Windows®** taskbar.
- 3 Point to **Programs** and then **MovieShaker**.
- 4 Click **MovieShaker**.




1.	Menu bar	Shows MovieShaker menus.
2.	Monitor panel	<p>Contains the Shake, Capture, and Edit tray. Select a tray by clicking the Shake, Capture, or Edit tab. The Shake tray is for creating a scene of approximately 30 seconds long including background music, using clips on the Clip tray at random.</p> <p>The Capture tray is provided for capturing images directly from the DV device or MICROMV device connected to your computer, and importing them into the Clip tray. The monitor displays the images recorded on the videotapes of the DV device or MICROMV device.</p> <p>The Edit tray is for processing scenes. Click a scene on the Product tray, then it is displayed on the Edit tray. You can add an effect to the scene by dragging the effect from the Effect tray and/or the Text tray and dropping it on the Edit tray.</p>
3.	Tool panel	<p>In the Tool panel, you will find the Effect, Text, Transition, Narration and Index tray. Select a tray by clicking the Effect, Text, Transition, or Narration button. Only when a MICROMV device has been connected to your computer and MICROMV Device has been selected from the Device menu, the Index tray appears while the Capture tray is displayed on the monitor panel.</p> <p>The Effect tray contains various effects to be applied to a scene.</p> <p>The Text tray provides a tool for creating a text effect to be applied to a scene.</p> <p>The Transition tray contains various transition effects to be inserted between scenes.</p> <p>The Narration tray provides a tool for recording narration to be inserted into a movie.</p> <p>The Index tray provides a tool for capturing images from a MICROMV device and imports them into the Clip tray.</p>
4.	Clip tray	The Clip tray is provided for placing clips to be processed with MovieShaker. It can contain a movie file, still image and/or sound files.
5.	Product tray	<p>The Product tray is where you arrange clips to make a movie. In the Product tray, you will find the Storyboard Display and the Timeline Display.</p> <p>On the Storyboard, you can easily arrange scenes and transitions.</p> <p>On the Timeline, you can arrange scenes, transitions, background music, and narration, and make fine adjustments to the starting/ending points and duration of scenes, transitions, background music, and narration.</p>


Importing images and sound clips

Before you can create a movie, you need to import the images and sound clips you want to use in your movie.

To import images and sound clips, proceed as follows:

- 1 Click the **File import** button  .
The **Import** dialog box appears.
- 2 Select the file you want to add.
- 3 Click **Open**.
The file is added to the **Clip tray**.




 Importing files over 75 seconds in length may cause MovieShaker to stop responding.

To remove a clip from the Clip tray, drag it from the Clip tray and drop it on the trash icon  . This only removes the clip from the tray, the original file is not deleted.

Creating a movie

After adding clip(s) to the **Clip tray**, you can create a short movie using the **Shaker** feature. Shaker randomly selects clips from the **Clip tray** to create a 30-second scene.

To create a movie, proceed as follows:

- 1 Click the **Shake** tab  .
- 2 Select a mood by clicking a face in the **Shaker tray**  .
- 3 Click the **Shake** button  .
A thirty-second scene is automatically generated.

To preview the created movie, proceed as follows:

Press **Play**  .



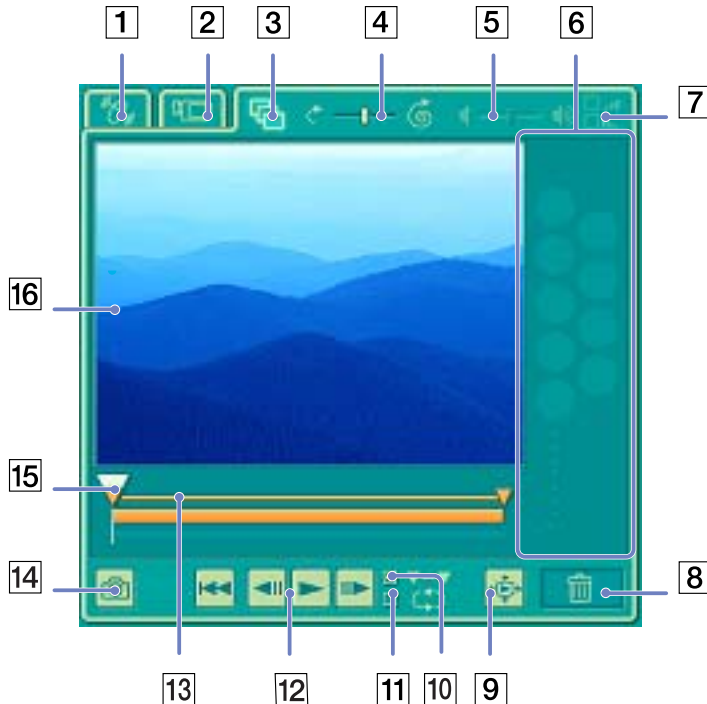
Scenes created with Shaker begin with a black frame. After processing, they are placed in the first available slot on the Product tray.

Limit the number of scenes in the Product tray to 5 or less.

MovieShaker may stop responding if there are too many scenes in the Product tray.

Editing clips and scenes


You can edit your movie by adding effects and text, adjusting the colour and contrast, and modifying the length of the clip.



1.	Shake tab
2.	Capture tab
3.	Edit tab
4.	Speed control slider
5.	Volume control slider
6.	Effect palette
7.	Fade-in, fade-out
8.	Trash
9.	Full-screen preview button
10.	Play trimming range
11.	Repeat-play
12.	Play control buttons
13.	Trimming range
14.	Save as still image button
15.	Time adjustment
16.	Monitor

To edit clips and scenes, proceed as follows:

- 1 Double-click the clip in the **Clip tray** to move it to the **Monitor Panel**.
- 2 Select the **Effect** tab from the **Tool Panel**.
- 3 Drag and drop the effect you want to add from the **Effect tray** to the **Edit tray monitor**.


 To preview an effect, click the effect in the **Effect tray** in the **Working Panel** monitor.

For instructions on adjusting effect duration and replaying clips or scenes, consult the online Help-files.

Saving a movie

You can save or export your final movie products. You can preview and check them before saving them. Your final movie products can be saved as files, exported to a DV device/MICROMV device*.

To save your movie, proceed as follows:

- 1 Click the **Export** button  .
The **Export** dialog box appears.
- 2 Select the format in which you want the document to be saved.
- 3 Click **Next**.
- 4 Select the folder in which you want to save the file.
- 5 Name the file.
- 6 Click **Save**.
Your movie is saved.

 Exporting movies may take a long time to complete. Saving movies with DV (Digital Video) will provide better quality than Quick-Save, but will take longer.

MovieShaker can play AVI files up to 65 MB in size.

For DV playback and smooth video playback, the following resolution/refresh rates are recommended: 1024x768/75 Hz or lower.

* Depending on your model.

Using Network Smart Capture

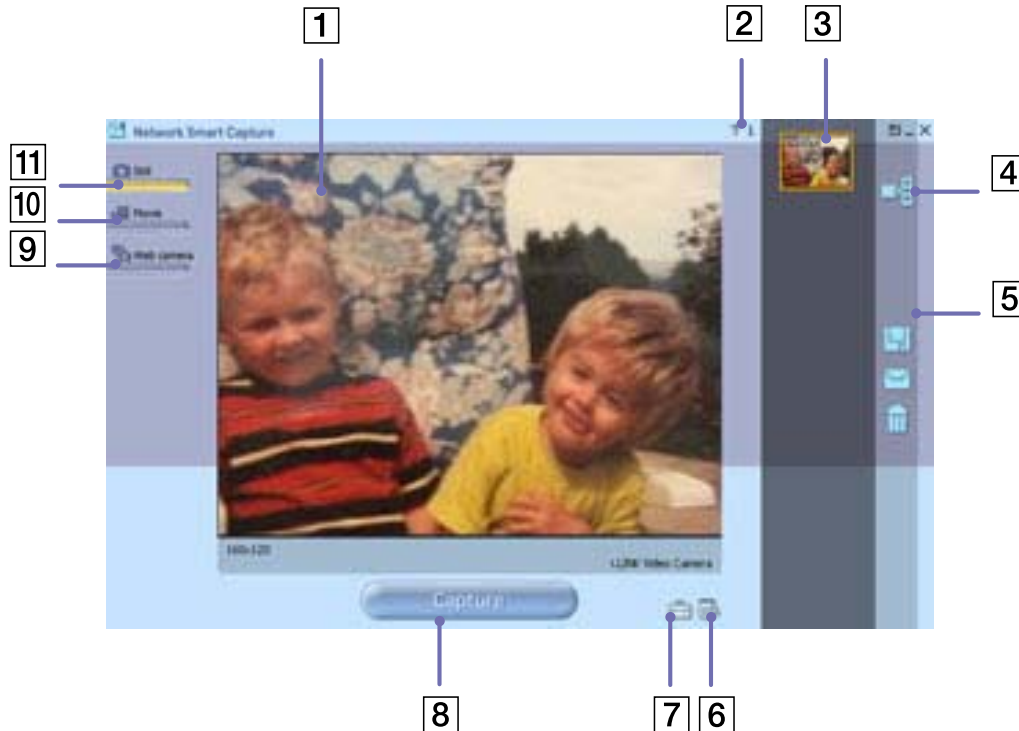
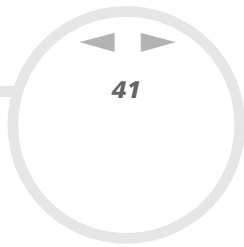
Network Smart Capture allows you to manage photos and movies taken with an i.LINK™ -compatible digital camera or USB Web camera. You can capture and enhance video or still images to share with your family and friends over the Internet or via e-mail.

Refer to the documentation that came with your compatible i.LINK™ device for information on operating conditions and proper connection. Before connecting i.LINK™-compatible peripherals to your computer, such as an optical drive or hard disk drive, make sure they are compatible with your computer's Microsoft® Windows® operating system and check the required operating conditions of the devices.

Launching Network Smart Capture


To launch Network Smart Capture, proceed as follows:

- 1 Make sure you have installed the software from the application CD, if necessary (see the printed **Application CD Guide**).
- 2 In the **Start** menu, select **Programs, Network Smart Capture**, and then **Network Smart Capture**. The **Network Smart Capture** main window appears, with a blue screen in the **Finder** window, indicating there is no data input from a digital camera or camcorder.
- 3 Connect your i.LINK™-compatible digital camera or USB Web camera to your computer and turn it on. The viewfinder image appears in the main window.



	<i>Icon</i>	<i>Description/Function</i>
1	Finder window	Displays images in real-time
2	Help	Displays the online Help documentation

	<i>Icon</i>	<i>Description/Function</i>
3	Data list	Displays thumbnails of captured images
4	Display Image	Opens captured images in the Finder Window
5	Task bar	See Managing your images and movies (page 53) for details.
6	Select Capture Menu	Enables you to customise an image and add effects
7	Change Setting	Enables you to set preferences
8	Capture button	Records the image in the Finder window. This button changes to Record in Movie mode and Start in Web camera mode.
9	Web Camera	Captures still images according to specified settings
10	Movie Mode	Captures moving images
11	Still Mode	Captures still images

 Some cameras and camcorders need to have recording media inserted before an image can be displayed in the **Finder** window. Read the manual supplied with your digital camera or camcorder for more information.

Using Still mode


To take still pictures with the Network Smart Capture software, proceed as follows:

- 1 Launch Network Smart Capture.
- 2 Connect your i.LINK™-compatible digital camera or USB Web camera to your computer and turn it on. The viewfinder image appears in the main window.
- 3 Click **Still** near the top left-hand corner of the screen.

Making settings for Still mode

Before you capture a still image, you can set your own preferences.

To make your settings for Still mode, proceed as follows:

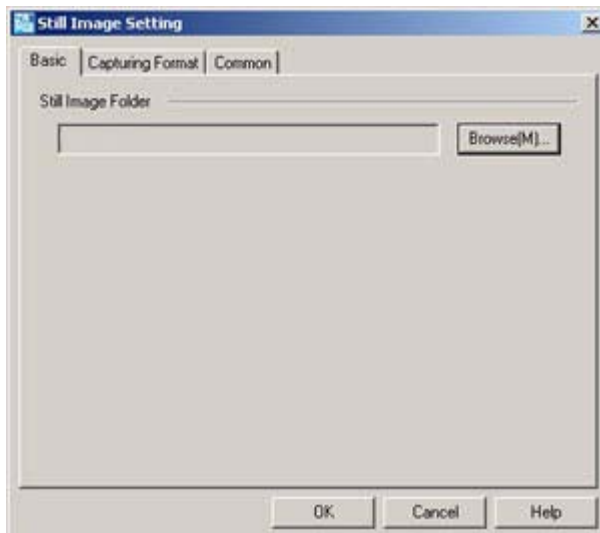
- 1 Click the **Select Capture Menu** icon  near the bottom of the screen to view capture options for your still image capture:




For more on the **Effect** option, see **Applying effects to your images and movies (page 52)**.

- 2 Click the **Change Setting** icon  near the bottom of the screen.


The **Still Image Setting** window appears, containing three tabs:

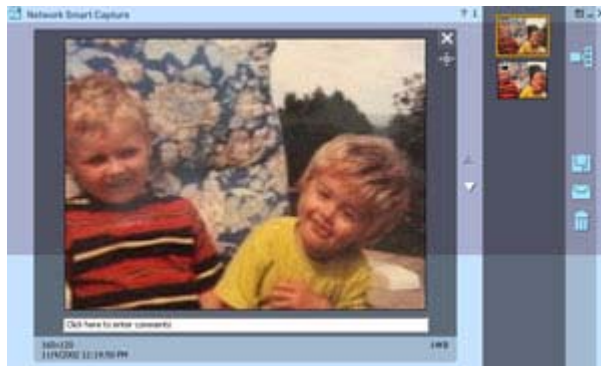


- Basic** — Select a folder destination for your images.
 - Capturing Format** — Select the image size in pixels and adjust the image quality.
 - Common** — Enable or disable the shutter and animation sound effects.
- 3 Click each tab to view the options and set preferences.
 - 4 Click **OK** when you have finished.
-  If using a web cam, a further tab allowing **Camera Adjustment** is available.

Capturing an image in Still mode

To capture an image in Still mode, proceed as follows:

- 1 Use your digital camera or camcorder to locate the image you want to capture.
- 2 When you see the image you want in the **Finder** window, click **Capture** . You can capture a single image or several images at once.
- 3 Your captured images are stored as thumbnail images in the **Display List** to the right of the **Finder** window.
- 4 Click the thumbnail images or arrows to the right of the **Finder** window to view your captured images. As each image is captured, it appears in the **Finder** window.



Using Movie mode


To capture a home movie, proceed as follows:

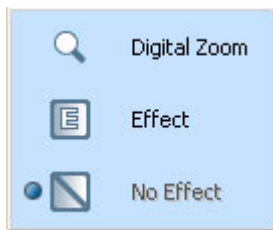
- 1 Launch Network Smart Capture.
- 2 Connect your i.LINK™-compatible digital camera or USB Web camera to your computer and turn it on. The viewfinder image appears in the main window.
- 3 Click **Movie** to activate **Movie** mode.

Making settings for Movie mode


Before you capture a moving image, you can set your own preferences.

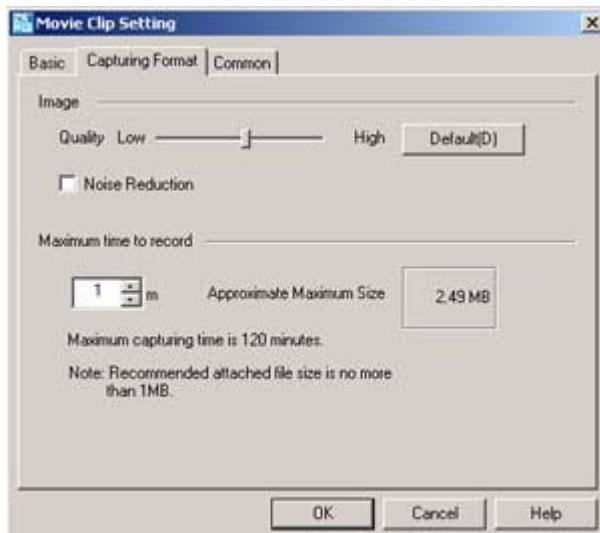
To make your settings for Movie mode, proceed as follows:


- 1 Click the **Select Capture Menu** icon  near the bottom of the screen to view setting options for your moving image capture.



For more on the **Effect** option, see **Applying effects to your images and movies** ([page 52](#)).

- Click the **Change Setting** icon  to view the available options for your movie capture. The **Movie Clip Setting** window appears, containing three tabs:



- **Basic** - Select a folder destination for your movies when recording video clips.
 - **Capturing Format** - Adjust the image quality, reduce noise, and set the maximum recording time for your movie capture.
 - **Common** - Enable or disable the shutter and animation sound effects.
- Click each tab to view the options and set preferences and click **OK** when you have finished.
-  If using a web cam, a further tab allowing **Camera Adjustment** is available.


Capturing an image in Movie mode

To capture an image in Movie mode, proceed as follows:

- 1 Use your digital camera or camcorder to locate the moving image you want to capture.
- 2 When you see the image you want in the **Finder** window or in the camcorder's viewfinder, click **Record**

 to begin recording your movie.

The **Movie Player** icon  appears.

Click **Stop**  when you have finished recording your movie.

The first frame of your movie appears in the data list to the right of the **Finder** window.

Network Smart Capture automatically stops recording according to the recording time you set in the **Movie Clip Setting** window.

- 3 You can preview your movie in the **Finder** window by double-clicking the movie thumbnail in the data list.

Using Web camera mode

With the Web camera function, you can set up the camera and software to take still images automatically, without you being there, according to conditions you specify. The function allows you to set a time interval for regularly capturing images, and a time period during which images are automatically captured.


To set the camera up as a Web camera, proceed as follows:

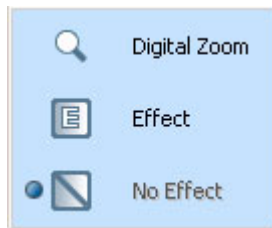
- 1 Launch Network Smart Capture.
- 2 Connect your i.LINK™-compatible digital camera or USB Web camera to your computer and turn it on. The viewfinder image appears in the main window.
- 3 Click **Web camera** to activate **Web camera** mode.

Making settings for Web camera mode


Before you capture a Web camera image, you can set your own preferences.

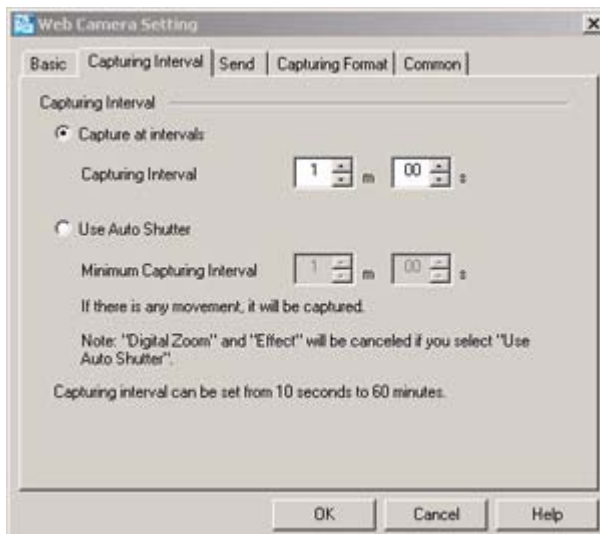
To make your settings for Web camera mode, proceed as follows:

- 1 Click the **Select Capture Menu** icon  near the bottom of the screen to view setting options for your image capture.



For more on the **Effect** option, see **Applying effects to your images and movies** ([page 52](#)).

- 2 Click the **Change Setting** icon  to view the available options for your image capture. The **Web Camera Setting** window appears, containing five tabs:



- ❑ **Basic** — Select a folder destination to store your images, set your maximum observation time, and choose your dial-up setting.
- ❑ **Capturing Interval** — Set your Web camera to capture images at intervals or whenever there is movement.
- ❑ **Send** — Set your upload options. You can make FTP and Web page settings here too.
- ❑ **Capturing Format** — Select the image size in pixels and adjust the image quality.
- ❑ **Common** — Enable or disable the shutter and animation sound effects.

3 Click each tab to view options and set preferences and click **OK** when you have finished.

 If using a web cam, a further tab allowing **Camera Adjustment** is available.

Capturing an image in Web camera mode

To capture an image in Web camera mode, proceed as follows:

- 1 Use your digital camera or camcorder to locate the moving image you want to capture.
- 2 When you see the image you want in the **Finder** window or in the camcorder's viewfinder, click **Start**

 to begin.


The **Web Camera Reservation Wizard** appears, guiding you through the initial settings.

- 3 Click **Finish** in the final screen.
The automatic function is set up and the pictures are taken according to your settings.

Applying effects to your images and movies

You can add effects to real-time images or movies displayed in the **Finder** window. You can use a different effect for each picture.

To add effects, proceed as follows:

- 1 Click the **Select Capture Menu** icon  at the bottom of the screen.
- 2 Select the **Effect** option from the list.
The **Effect Selection** window appears.






- 3 Choose from the range of effects and animations.
- 4 Click **Properties** to select the level of each effect.

To remove an effect, select **No Effect** from the **Select Capture Menu** list or from the **Effect Selection** window.

Managing your images and movies

The task buttons to the right of the **Network Smart Capture** window enable you to perform various functions with your images or movies.

	Save As	Saves still images in JPEG format and movie images in MPEG format to your required location.
	Send attached Image by E-mail	Launches your e-mail program with a new message window containing the still image or movie as an attachment.
	Delete	Discards any or all of your still images.



You must be connected to the Internet before attempting to e-mail your still images or videos.

Viewing the online Help

For more information about Network Smart Capture, see the application's online Help files.

To view the online help, proceed as follows:

From the **Start** menu, click **Programs, Network Smart Capture**, and click **Help** from the submenu.

Alternatively:

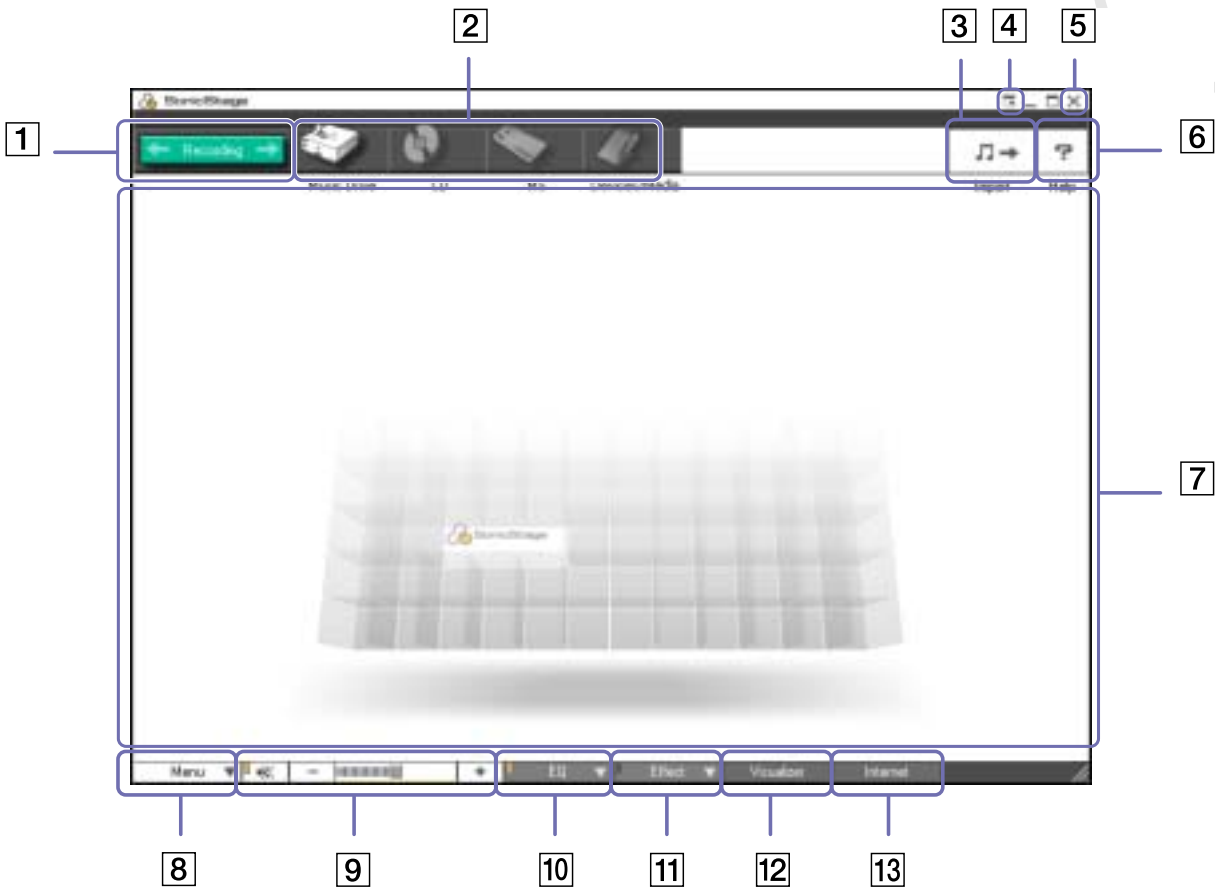
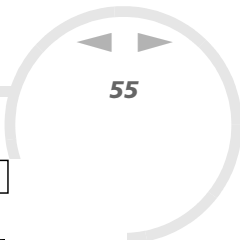
Click the **Help**  icon in Network Smart Capture's main window.




Managing audio files with SonicStage

SonicStage lets you play and record audio CDs and import digital audio files while maintaining the copyright information of the contents. When you record an audio CD with SonicStage onto your computer's hard disk drive, the default format is ATRAC3. Other possible formats are: WAV, WMA, ATRAC3Plus. The imported data can be played on your computer or transferred to external devices or media. SonicStage converts your existing MP3, WMA and WAV format audio files into the default ATRAC3 format.


To open SonicStage, proceed as follows:

- 1 Click the **Start** button on the **Windows**[®] taskbar.
- 2 Point to **Programs, SonicStage** and then click **SonicStage**.
- 3 The **Please confirm setup** dialog box appears.
You can set SonicStage as the default application for playing audio CDs by selecting the appropriate check box.
- 4 Click **Yes**.
The **Welcome to SonicStage** window appears if you open **SonicStage**.
- 5 Close the window.
The **SonicStage** main window appears.



1	Recording button	Displays the Recording Assistant window. Select a source icon and a target icon.
2	Source icons	As a source you can use: - the Music drive : files from the music database Music Drive managed by SonicStage, or the audio files registered to a playlist on the Music Drive . - a CD : files from an audio-CD, CD-R and CD-RW. - a MD : files from a MiniDisc inserted into a Net MD* slot. - a MS : files from a MagicGate Memory Stick™ inserted into a Memory Stick™* slot. - Devices/Media : files from a Network Walkman or an external NetMD device.
3	Import button	Displays the Import window. You can use this window to import audio files stored on the computer into the Music Drive and register them to a Playlist .
4	Simple Mode button	Switches the Main window to Simple Mode . You can also switch to Simple Mode by clicking the shortcut key <F11>.
5	Close button	Closes SonicStage.
6	Help button	Displays the help file.
7	Operation area	The Playback area , Content area or Edit area are displayed in this area.
8	Menu button	Displays the main menu of SonicStage.
9	Volume control buttons	Here you can: -  turn the sound off or on ; -  turn the volume down; -  turn the volume up.
10	Equalizer button	In the Equalizer menu: - you can select a preset equalizer setting: flat, rock, pop, jazz or classical; - put the equalizer off; - change the equalizer settings.

11	Sound Effect button	You have the choice between: - Vocal Canceller : the Vocal Canceller cannot be applied to songs on a MiniDisc. - Sounds Effects Off .
12	Visualizer button	The Visualizer window shows various visual effects while playing an audio file.
13	Internet button	Opens or closes the Internet Panel . It allows you to download or stream audio files via EMD services.

 The CDDb2® (Compact Disc Database) Music Recognition Service registration wizard enables you to register with CDDb. You need Internet access on your computer to register and use this service. For more information regarding CDDb2 registration, click the **Help** button.

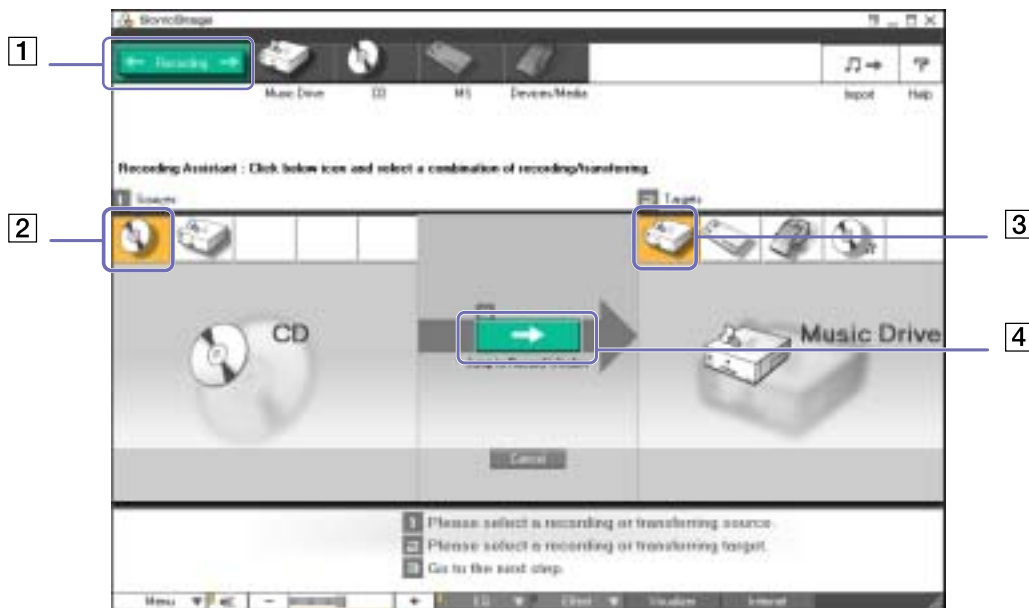
* Only possible when you have this slot built-in on your machine.






Recording from a CD

You can, for example, record songs from audio CDs and import them to playlists in SonicStage.

To record a CD, proceed as follows:

- 1 Insert an audio CD into your system's optical disc drive.
- 2 Click the **Recording** button (1).
- 3 Click the **CD** icon as your source (2).
- 4 Click the **Music Drive** icon as your target (3).



- 5 Click the **Jump to Record Window** button (4).
The **RecordPanel** window appears.
- 6 If you only want to record a few songs, click the **Show List**  button.
The list of tracks on your audio CD appears.
- 7 If necessary select the format and bit rate for recording by clicking the **Change CD Recording Format**  button.
- 8 You can select specific tracks on your CD by deselecting the check boxes from the tracks you do not want to record. You can clear all selected tracks by selecting the empty **Select All**  check box, and then selecting the tracks you want to record.
For each song you can determine the song title, the artist and the genre.
- 9 Click the **Rec Selection**  button to begin recording.
When you want to record all the songs of the audio CD to the playlist, you click the **Record All**  button.
- 10 When the recording is finished, the new playlist appears in the file tree view in the right pane.



When you record from an audio CD on your optical disc drive for the first time, the **CD Drive Optimization** dialog box appears. Click **Start** to verify your optical disc drive. Once the verification is performed, recording begins.

You can display the name of the CD and its songs by clicking the **CD Info** button and after registering with CDDb.


Transferring songs (check in/out)

You can transfer songs between the playlists on your **SonicStage** software and external devices or media (for example, Memory Stick™ Walkman, Network Walkman, CD-RW). For more information on using your external devices or media, see the documentation that came with the product.

Checking out songs

Checking out songs means transferring audio files from a computer to an external device (for example, a portable player).

To check out songs, proceed as follows:

- 1 Connect the external device or insert the media (for example, a MagicGate Memory Stick™) into your computer.
Your computer automatically recognises the connected external device or media and the **Check-In/Out** window appears.
- 2 Click the **Show List** button to see which songs you have in the **Music Drive**.
- 3 In the **Tree** view on the left, select the playlist containing the song(s) to check out.
- 4 In the **List** view on the left, select the track to check out. To check out more than one song at a time, hold down the **<Ctrl>** key and select additional songs.
- 5 If necessary, select the transfer mode for checking out.
- 6 Click the **Check Out**  button or drag the song to the appropriate position in the song list of the external device or media.
The checking out begins.



SonicStage does not work with the blue Memory Sticks™. For more information, read the OpenMG manual.


To cancel **Check Out**, click **Stop**, or click **Cancel** in the processing dialog box that is displayed during the **Check Out** process.

Checking in songs

After checking out audio files, you can transfer those files back to the hard drive. This is what we call checking in.

The songs that you transfer like this can only be checked in to the hard drive of the same computer from which the songs were checked out.

To check in songs, proceed as follows:

- 1 Connect the external device or insert the MagicGate Memory Stick™ into your computer. Your computer automatically recognises the connected external device or media and the **Check-In/Out** window appears.
- 2 Click the **Show List** button to see which songs you have on your Memory Stick™.
- 3 Select on the right-hand side the track to check in. To check in more than one song at a time, hold down the **<Ctrl>** key and select additional songs.
- 4 If necessary, select the transfer mode for checking in.
- 5 Click the **Check-In**  button.
The checking out begins.


 To cancel **Check In**, click **Stop**, or click **Cancel** in the **Processing** dialog box that is displayed during the **Check In** process.

Additional features

- ❑ **SonicStage Backup Tool** – You can back up and restore all the music, graphics and information data managed by **SonicStage**. You must be connected to the Internet to use the **SonicStage Backup Tool**.
- ❑ **Import audio files in various formats** – You can import audio files with various formats, such as MP3, WAV and WMT standards. You can also import audio files that comply with the Microsoft® Windows® Media™ Technologies (WMT) standard, identified by ASF or WMA extensions. Manage your audio files through the **Playlist** feature of **SonicStage**.
- ❑ **Manage imported songs on the Playlist** – Additional features are available when you register your imported songs through the **Playlist** feature of **SonicStage**. You can manage your music by creating your own list of songs categorised by genre or artist, displaying your song list in the **Playlist** feature, and arranging your songs in a customised order using the **Playlist** folders. Edit your music by combining multiples songs into a single one, or divide one song into two, by using the **Combine** and **Divide** features.
- ❑ **Simple mode** – The main **SonicStage** window in **Simple mode** is a smaller, compact version of the **Full mode** view. This can be useful when you want to listen to songs with **SonicStage** while using other software, or whenever you feel that **Full mode** view is intrusive. The design of the main **SonicStage** window in simple mode can be changed by selecting a new “skin”, which enhances the appearance of the window. The **Simple mode** feature enables you to perform playback operations only.

Using PictureGear Studio

The PictureGear Studio software is designed to creatively manage your digital pictures. With its easy-to-use features, you can quickly load images from your digital camera or camcorder, print high-quality photos, create custom labels, and design personalised photo albums or binders to share with friends and family.

 To share a PictureGear Studio creation over the Internet or by using another computer, use the **Export** feature. See **Using the Export feature (page 75)**.

Launching PictureGear Studio


To launch PictureGear Studio, proceed as follows:

- 1 Make sure you have installed the software from the application CD-ROM, if necessary (see the printed **Application CD Guide**).
- 2 In the **Start** menu, select **Programs, PictureGear Studio**, and then **PictureGear Studio**. The **PictureGear Studio** main window appears.
- 3 Move the mouse cursor over each feature to see a description of it on the right-hand side.



Using the Import feature

With the Import feature, you can capture and import pictures from your USB digital camera / camcorder or TWAIN-supporting scanner to your computer. Once you have imported the pictures, you can select your favourite pictures and save them in handy folders for future use.

 Connect your digital camera or camcorder to your computer, or insert your Memory Stick™ into the appropriate slot, before attempting to import pictures.

When you initially connect your digital camera or camcorder, or insert a Memory Stick™, Windows® XP may attempt to recognise the device or media. In this case, an identification window appears in which you have to select the device.

Using the Import feature with a USB device

To use the Import feature with a USB device, proceed as follows:

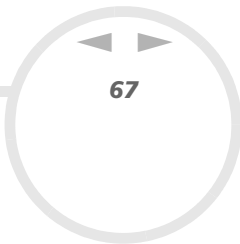
- 1 Connect your digital camera / camcorder to your computer or insert the Memory Stick™ you are using.
- 2 In the PictureGear Studio main window, click **Import Photo**.
The **PhotoCollection Import** window appears.
- 3 Click **Import Photo**.
Your connected device is displayed in the **Select Device** window.
- 4 Click **List** to view all the pictures located on the device or media.
- 5 Make your selections and click **Import Selected Photos**.
The **Specify Folder** window appears.
- 6 Select a folder option.
- 7 If you are importing to a new folder, type in the folder name.
- 8 Click **Start Importing**.
The **Adjust** window appears.

- 9 Click to make any adjustments you want to make to the pictures. The **Adjust** window displays an enlarged version of the picture on the right and thumbnail versions on the left.
 - Click **Save** to relocate the individual picture to a new folder.
 - Click **Delete** to remove the picture from the photo collection.
 - Click **Rotate** to change the picture's position.
 - Click **Trim** to crop the picture or capture a specific area.
- 10 Click **Finish Importing** to save the imported pictures in a photo collection (see **Using the PhotoCollection feature (page 68)**).

Using the Import feature with a TWAIN device

To use the Import feature with TWAIN-supporting devices (a scanner, for example), proceed as follows:

- 1 Make sure the photo capture software delivered with the device is installed on your computer, and connect your scanner or other TWAIN device to your computer.
- 2 In the PictureGear Studio main window, click **Import Photo**. The PhotoCollection Import window appears and your connected device is displayed in the **Select** window.
- 3 Click the **Camera** icon and select a folder option.
- 4 If you are importing to a new folder, type in the folder name.
- 5 Click **Start Importing**. The photo capture application that was provided with the device launches automatically.
- 6 Use the photo capture application to import the photos. When import is complete, the **Adjust** window appears, displaying an enlarged version of the picture on the right and thumbnail versions on the left.
 - Click **Save** to move the individual picture to a new folder.



- ❑ Click **Delete** to remove the picture from the photo collection.
 - ❑ Click **Rotate** to change the picture's position.
 - ❑ Click **Trim** to crop the picture or capture a specific area.
- 7 Click **Finish Importing** to save the imported pictures in a photo collection (see **Using the PhotoCollection feature (page 68)**).

Using the PhotoCollection feature

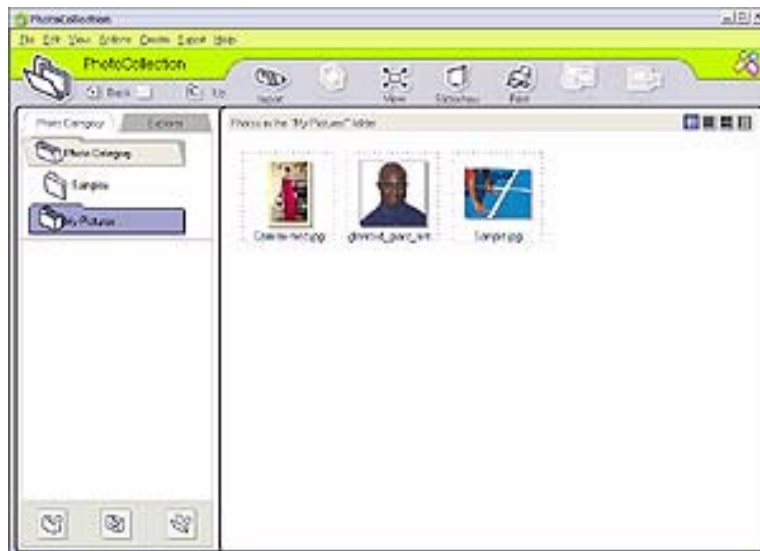
You can organise and manage your imported pictures on your computer's hard drive.

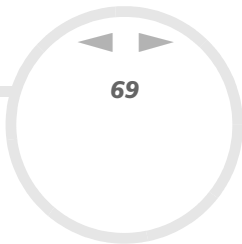
To use the PhotoCollection feature, proceed as follows:

- 1 In the PictureGear Studio main window, click **PhotoCollection**.

Alternatively, go to **Start, Programs, PictureGear Studio, Tool** and then click  **PhotoCollection**.

The **PhotoCollection** window appears, with a list of available photo sources displayed on the left, and the selected source's contents displayed as thumbnail pictures on the right.





- 2 From the thumbnail view, click to select pictures.
Hold down the <Ctrl> key while clicking to select several pictures.
Use <Ctrl>+<A> to select all the photos in a folder.
- 3 Manage your pictures with these additional tools and features:
 - ❑ Click **Rotate** to change the picture's position.
 - ❑ Click **View** to enlarge a thumbnail view.
 - ❑ Click **Slideshow** to place the selected pictures into an organised slideshow.
 - ❑ Click **Print** to set up your photos and select paper to make prints.
 - ❑ Click **Create** to create an album, binder, postcard or label, for example.
 - ❑ Click **Export** to send your collection by e-mail or to convert the size and format of the selected pictures.

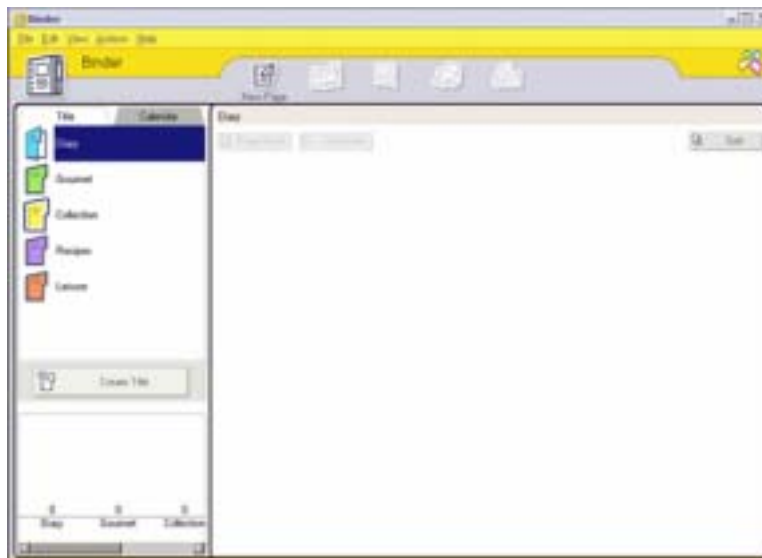
Using the Binder feature

You can add comments to your favourite photos, add custom backgrounds, clip art, and stamps, or showcase your own drawing talent. Add, remove, or change your designs to create your own unique photo art.

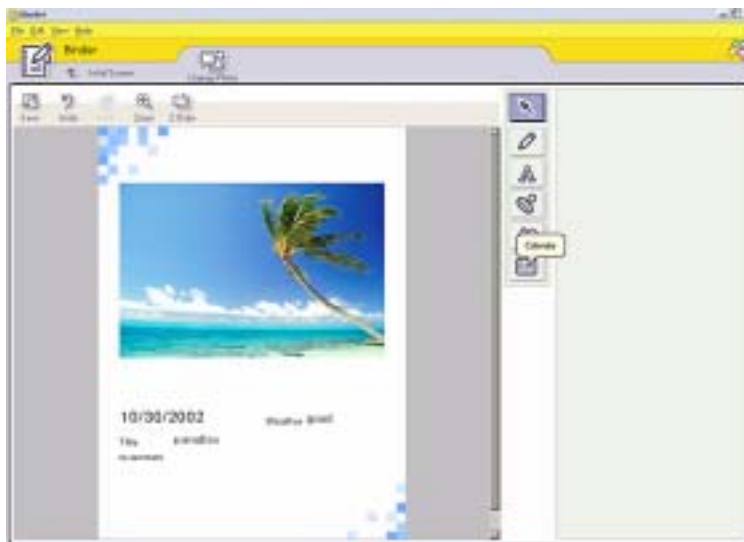
To use the Binder feature, proceed as follows:

- 1 In the PictureGear Studio main window, click **Binder**.
Alternatively, go to **Start, Programs, PictureGear Studio, Tool** and then click  **Binder**.
The **Binder** window appears.

A list of binder styles is displayed on the left. When you add your pictures to a binder, they are displayed as thumbnails on the right.



- 2 Select a binder style, and then click **New Page**. Available photo sources are displayed as thumbnails.
- 3 Click a photo to select it. An information form appears.
- 4 Fill in your information and click **OK**. An art palette window appears.



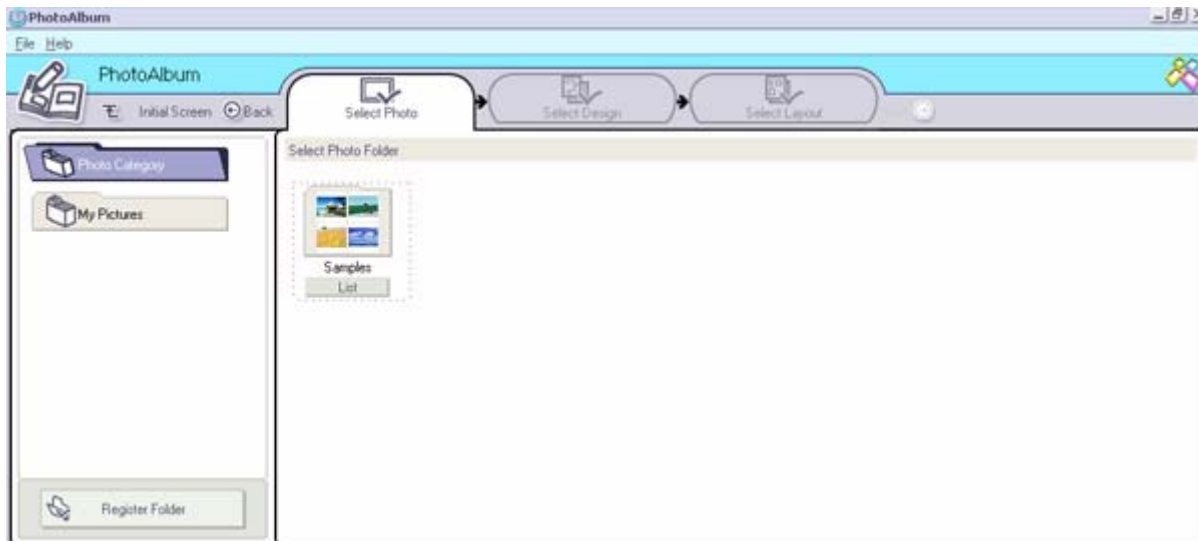
- 5 To create an original page with art or stamps, use the decoration features on the right by clicking on the required feature and applying it to your photo.
- 6 Click **Save** to add the new page to your binder.
- 7 You can create your own custom binder styles by clicking **Create Title**.

Using the PhotoAlbum feature

You can organise your memorable photos in an electronic photo album to share with friends and family.

To use the PhotoAlbum feature, proceed as follows:

- 1 In the PictureGear Studio main window, click **PhotoAlbum**.
Alternatively, go to **Start, Programs, PictureGear Studio, Tool** and then click  **PhotoAlbum**.
The **PhotoAlbum** window appears.
- 2 Click **New Album**.
The **Select Photo** area appears.



- 3 Click **List** to select the photos you want to include in your album from available folders. The **Photo List** window appears.
- 4 Click **Create the Album** with the selected photo(s) after selecting your photos. The **Select Design** window appears.
- 5 Click to select a design layout for your album. Use the scroll bar to view all available album designs. The **Select Layout** window appears.
- 6 Click to select a page layout for your album. Use the scroll bar to view all available layout designs. A preview of your selected design and page layout is displayed.



- 7 Scroll through your album using the book icons at the bottom of the window.
- 8 Click **Edit Album** to make changes to your album.
- 9 Customise your album by adding more pictures, pages, decorations, or comments, or by deleting pages.
- 10 Click **Edit Page** to customise a page in your album.
You can customise with your own drawings, stamps or other decorations.
- 11 Click **Save**.
The **Save Album** dialog box appears.
- 12 Enter a name for your album and click **OK**.

 If you want to work on a previously created album, do not click **Create New Album**. Instead, select the required album from the **AlbumCollection** view on the right-hand side of the window.


Photo albums can only be viewed or edited using the PictureGear Studio software. To share a PictureGear Studio creation over the Internet or by using another computer, use the **Export** feature (see **Using the Export feature** [\(page 75\)](#)).

Using the Export feature

You can export your completed photo album to enable viewing over the Internet, with another computer, or saving to a recordable media.

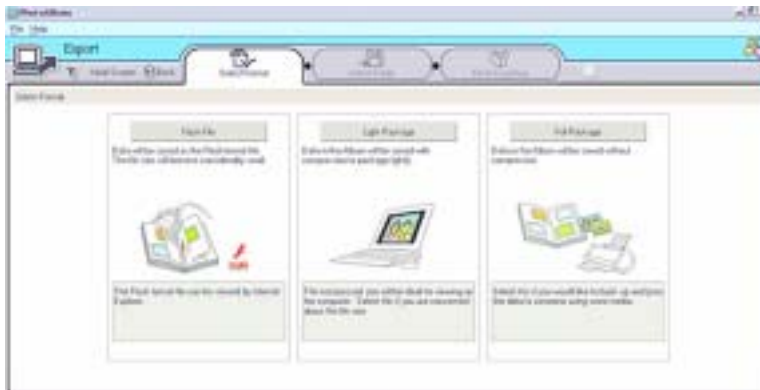
There are three export formats available:

- Export as a Flash File to create a small file that can be viewed using Microsoft® Internet Explorer.
- Export as a Light Package to create a compressed file that can be viewed on a computer.
- Export as a Full Package to create an uncompressed file to be saved to recordable media, such as a CD-R/CD-RW or a Memory Stick™.

 Only Albums exported as Flash Files can be viewed on another computer on which PictureGear Studio is not installed.

To export a photo album, proceed as follows:

- 1 Create a photo album as described in **Using the PhotoAlbum feature (page 72)**.
- 2 In the PhotoAlbum main window, click **Export**.
The **Select Format** window appears.



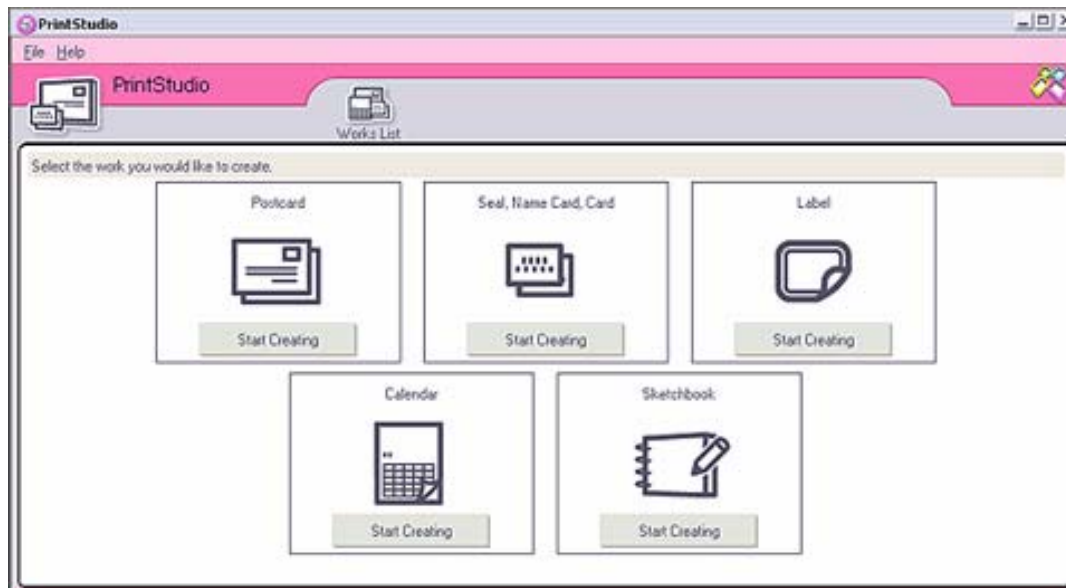
- 3 Click an export format to select it.
The **Select Folder** window appears.
- 4 Click **Browse** and navigate to the destination folder.
- 5 Enter a file name, if necessary.
- 6 Click **Export**.
A progress window appears briefly.
An export completion message window appears, displaying the file name and file size.
- 7 Click **OK**.
- 8 Click **Return to Edit Album Page**.

Using the PrintStudio feature

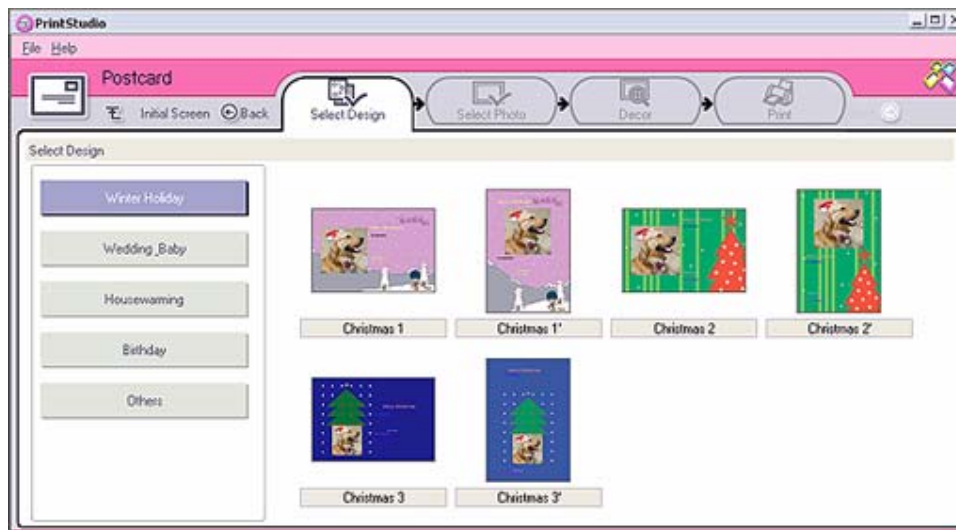
Use **PrintStudio** to design and print original postcards, calendars, art, and labels using your favourite pictures.

To use PrintStudio, proceed as follows:

- 1 In the PictureGear Studio main window, click **PrintStudio**.
Alternatively, go to **Start, Programs, PictureGear Studio, Tool** and then click  **PrintStudio**.
The **PrintStudio** window appears.



- 2 Select the item you want to create and click **Start Creating**.
The initial creation window appears, which varies depending on the item you are creating.



- 3 Make selections for the picture(s), design layout, and custom decoration for the item you want to create.
- 4 Set the number of copies to be printed and select a connected printer.
- 5 Click **Print**.
- 6 Make sure you use the appropriate paper when creating items, such as postcards, labels or business cards.

Viewing the online Help

For more information about PictureGear Studio, see the application's online Help files.

To view the online help, proceed as follows:

Click **Help**  in PictureGear Studio's main window or in each PictureGear Studio element.

Customising your computer

The following sections briefly describe how to change the main settings of your computer. Among other things, you will learn how to prepare your modem for use, how to use and customise the look of your Sony software and utilities, etc.


- ❑ Setting up your language ([page 81](#))
- ❑ Setting up your notebook with Sony Notebook Setup ([page 83](#))
- ❑ Managing power with PowerPanel ([page 85](#))
- ❑ Selecting display modes ([page 92](#))
- ❑ Configuring your modem ([page 93](#))
- ❑ Changing your windows design with the UI Design Selector program ([page 94](#))
- ❑ Setting a Sony wallpaper ([page 95](#))
- ❑ Selecting a screen saver ([page 96](#))

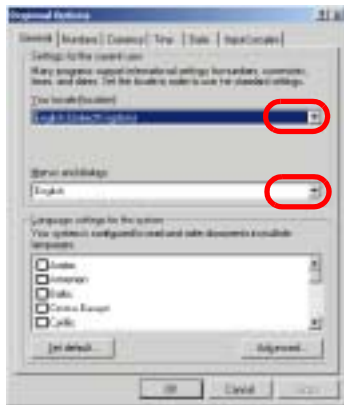
Setting up your language

It is important that you select the correct keyboard settings during the Setup of Windows for your machine.

- 1 At first boot, click **Next** in the **Windows 2000 Professional Setup** wizard window.
- 2 In the **Licence Agreement** window, accept the Licence Agreement and click **Next**.
- 3 To change your keyboard layout in the **Regional Settings** window, click the lower **Customize** button. There are two **Customize** buttons: please select the lower one.
- 4 In the **Input Locales** tab, click the **Add** button in the **Installed input locales** text box.
- 5 Select your keyboard settings from the **Input Locale** drop-down list in the window that appears.
- 6 Click **OK**.
- 7 In the **Regional Options** window, click the **Set as Default** button.
- 8 Click **Apply** to apply the changes, then click **OK**.
- 9 Continue your Windows setup until it is finished.

To change the country and language settings into your language as soon as Windows has been restarted, proceed as follows:

- 1 Click **Start**, choose **Settings, Control Panel**.
- 2 In the **Control Panel** window, double-click the **Regional Options**  icon.
- 3 In the **General** tab of the **Regional Options** window, change **Your locale (location)**.
- 4 To change the language of the menus and dialog boxes, select your language from the drop-down list.



- 5 Click **Apply** to apply the changes. You are prompted to log off and log on again. Only then, the changes to the new language will take effect. Click **Yes** if the new language must be changed for all users. Click **OK** in the **Regional Options** window.
- 6 Click **Start**, and select **Log Off Administrator....**
- 7 Click **Yes** in the **Log Off Windows** window.
The **Log On to Windows** window appears.
- 8 Enter your password and click **OK** to log on again.
All the menus, help files and icons are then displayed in your selected language. However, some parts may remain in English.

Setting up your notebook with Sony Notebook Setup

The **Sony Notebook Setup** utility allows you to consult system information, specify preferences for system behaviour, and set up password protection for your VAIO notebook.


To use Sony Notebook Setup, proceed as follows:

- 1 Click the **Start** button on the **Windows®** taskbar.
- 2 In **Programs**, select **Sony Notebook Setup** and then click **Sony Notebook Setup**.
The **Sony Notebook Setup** window appears.



<i>Tab</i>	<i>Description</i>
About This Computer	Displays system information, including memory capacity, serial number, and BIOS version.
Initial Setting	Selects the drive and device order you wish to use for loading the operating system. You can specify the hard drive as well as other drives inserted into your computer. You can change the volume of the sounds played while the operating system is loading.
Power On Password	Sets the password to secure your computer. If you use this option, remember the password at all times. If you forget the password, you cannot change this setting anymore, and you will not be able to start your computer.
Device	Disables ports or devices to release resources to the system. To change the port settings, select a port and click Settings .

- 3 Select the tab for the item you want to change.
- 4 Once finished, click **OK**.
The item has been changed.

 For more information about each option, click Help on the **Sony Notebook Setup** screen to display the help file.

If you open **Sony Notebook Setup** as a limited user, then only the **About This Computer** tab will be visible.

Managing power with PowerPanel

The **PowerPanel** utility controls the power management of your notebook and provides key information about system activity and battery life. The automatic power management selects the most advantageous profiles, or lets you customise the profiles you choose, according to your own needs, with the goal of extended battery life.

PowerPanel has the following features:

- ❑ Automatic Profile Selection (APS) based on the currently active application;
- ❑ Ability to select specific Power Profiles manually from the menu;
- ❑ Ability to edit and create new profiles;
- ❑ Ability to display detailed battery information;
- ❑ It works in harmony with your Windows® settings.
- ❑ ToolTips to signal Power Profile changes;
- ❑ Ability to select limited Power Profiles directly from the Power Profile page;
- ❑ Ability to prevent specific users from modifying profiles

Activating PowerPanel

When you start the computer, the **PowerPanel** icon appears in the system tray by default. To see the current power profile, simply point to the icon. The current power profile will be displayed in a tooltip.

To change profiles, proceed as follows:

- 1 Right-click the **PowerPanel** icon in the taskbar and select **Profiles**.
- 2 In the **Profiles** menu, select a profile.
The appropriate power settings are activated.





When you use the battery pack as power source, your system selects the **Maximum Battery Life** power management profile by default. If you select a different power management profile while using battery power, the same profile will automatically be selected the next time you use the battery pack to power your computer.

Activating power management profiles

PowerPanel provides several predefined **power management profiles**. Each profile consists of a group of power management settings that are designed to meet specific power management goals, ranging from maximum power management to no power management.



Running on AC











Icon *Description*

	AC Power – The power management state when AC power is in use. PowerPanel automatically loads the AC profile unless you disable this feature.
	Power Management Off (Plugged in) – Turns off all power management features such as Standby and Hibernate modes.

Running on batteries

Icon *Description*

	Maximum Battery Life – Provides power saving features to give you maximum battery life and good performance. It reduces the brightness of the display and puts the system into Standby mode after a specified time period.
	Ultimate Battery Life – Extends the Maximum Battery Life . ! When you select this profile, it completely shuts off the power of the optical drive to save extra power for longer battery life. The system can neither read nor write from or to the optical drive, moreover the drive does not start spinning at all. The Memory Stick™ port is shut off also. If you want to use the optical drive or the Memory Stick™ port, return to Maximum Battery Life.

<i>Icon</i>	<i>Description</i>
	Maximum Performance – Provides the best system performance while still conserving power.
	Word Processing – Optimises power management with longer timeouts on the hard disk and display screen. You can also establish settings for LCD (Video) Standby, Hard Disk Standby, and Standby to optimise power management for your system.
	Spreadsheet – Reduces the LCD brightness to 'medium', as your software does not require higher performance.
	Presentation – Keeps the display on at all times while it conserves power. This option is ideal for slideshow presentations. You can establish settings for LCD (Video) Standby , Hard Disk Standby , and Standby to optimise power management for your system.
	Communications – Extends battery life by initiating a quick display time-out. You can also establish settings for LCD (Video) Standby , Hard Disk Standby , and Standby to optimise power management for your system.
	Games – Disables the display and the Hard Disk timer.
	DVD – Optimises performance and power requirements for DVD usage.
	Camera – Optimises performance and power requirements for camera usage.
	Power Management Off (Running on batteries) – Turns off all power management features such as Standby and Hibernate modes.
	Automatic Profile Selection - Analyses the performance of each application you choose and matches the profiles to its needs.


Selecting automatic profiles when running on batteries

A power profile is a set of timer values for a variety of system devices. PowerPanel automatically selects the profile associated with the application you are using and changes profiles as you switch between applications.

Power management lets your system enter energy saving modes by levelling some energy-consuming parameters, such as LCD brightness, or hard disk activity.

To select automatic profiles, proceed as follows:

- 1 Right-click the PowerPanel icon in the taskbar and select **Profiles**.
- 2 Select **Automatic Profile Selection**

 The **Automatic Profile Selection** feature deactivates when you manually select another Power Profile from the menu.





Displaying detailed battery information

You can display detailed information of your computer's battery.

There are 3 ways in which you can display battery information:

- ❑ Right-click the PowerPanel icon in the taskbar and select **Battery Information** from the menu.
- ❑ Double-click the **PowerPanel** icon in the taskbar and select the **Battery** tab. The **Battery** tab in the **PowerPanel** window contains information such as the estimated battery life remaining and charging time.
- ❑ Display the **Battery Information** toolbar on the screen, which shows the battery status icon, the percentage of remaining capacity and the amount of running time left in the battery. To display the **Battery Information** toolbar, right-click the PowerPanel icon in the taskbar and select **Toolbars** then **Battery Information** from the menu.


Battery icon *Battery status*

	Discharging: the icon is blue
	Fully charged: the icon is completely blue with an AC power plug
	Charging: the icon is blue with a red clip attached to the terminal
	No battery: the icon is blue with a yellow cross over it

Editing a power profile

To edit the power management settings of a power profile, proceed as follows:

- 1 Right-click the PowerPanel icon in the taskbar and select **Edit/Create Profiles** from the menu. The **Profile Editor** window appears.
- 2 Click the profile you want to edit on the left of the screen.
- 3 Double-click the power profile property (Hibernate, Standby...) you want to modify on the right of the screen.
An option list or a dialog box will appear
- 4 Make your settings.
- 5 Click the **File** menu and then click **Save**.

 You must have Administrator's rights on your notebook to be able to edit existing profiles. Users whose account type is **Limited** can only open the **Power Profile** tab in the **Power Panel** window in view mode. To check your user account information, select the **Users and passwords** category in the **Control Panel**. Your account type must be **Computer administrator** to be able to edit power profile.

Creating a power profile

To create a power profile, proceed as follows:

- 1 Right-click the PowerPanel icon in the taskbar and select **Edit/Create Profiles** from the menu. The **Profile Editor** window appears.
- 2 Select **New** from the **File** menu.
- 3 In the **Create New Profile** dialog box, check the appropriate option button to specify the type of power management profile that you want to create and click **OK**.
- 4 Select the new power management settings you would like for the device.
- 5 Click the **File** menu and then click **Save**.


Selecting display modes

This notebook uses the Mobility Radeon 7500 video controller. You can select which display is used when the notebook is connected to an external display. When you connect an external display, you can switch the display between your notebook's LCD and the external monitor.

Before you can select a display, you need to shut down your notebook, connect the external display (flat panel display (FPD), panel or monitor) to your notebook, and restart.

To select a display, proceed as follows:

- 1 Click the **Start** button, point to **Settings** and then click **Control Panel**.
The **Control Panel** appears.
- 2 Double-click **Display**.
The **Display Properties** dialog box appears.
- 3 Click the **Settings** tab.
- 4 Click the **Advanced** button.
The **Sony Notebook LCD and Mobility Radeon Properties** dialog box appears.
- 5 Click the **Displays** tab.
Select the **Monitor, Panel** or **FPD** icon.
- 6 Click **Apply** and then **OK**.

 You may not be able to display the notebook LCD screen and an external display or a projector at the same time, depending on the types of computer displays and projectors you are using.

Before turning on the computer, turn on the peripheral devices.

Configuring your modem

Before you can start using your internal modem, or each time you use your modem while travelling, make sure that the country of the active location defined in the **Phone and Modem Options** dialog box matches the country you are dialling from.

You may notice a **Country Selector** tab under your current modem driver options. As the **Country Selector** tab is not a constant feature, do not use this tab to change the country settings. Only the following procedure is reliable.

To change your modem country settings, proceed as follows:

- 1 Click **Start**, point to **Settings** and then click **Control Panel**.
- 2 Double-click **Phone and Modem Options**.
The **Phone And Modem Options** dialog box appears.
- 3 Select your location on the **Dialing Rules** tab.
- 4 Click the **Edit** button to change the current configuration.
The **Edit Location** dialog box appears.
Or
Click the **New** button to configure your modem.
The **New Location** dialog box appears.
- 5 Check the country/region settings, and make sure it matches the place you are dialling from.
- 6 If you modified your location settings, click **Apply**, and then **OK**.
The **Phone and Modem Options** dialog box appears.
- 7 Check that your modem is listed in the **Modems** tab.
If your modem is not listed, click **Add** and follow the wizard.
- 8 Click **Apply/OK**.
Your modem is configured.



Before applying new country settings, please make sure your phone line is disconnected from your VAIO computer.

Changing your windows design with the UI Design Selector program

You can change the window design of Sony software compatible with the **UI Design Selector** program.

To change the window design using UI Design Selector, proceed as follows:

- 1 Click **Start**, point to **Settings** and then click **Control Panel**.
- 2 Double-click **UI Design Selector**.
The **UI Design Selector** dialog box appears.
- 3 Click << or >> and select the design you like.
- 4 Click **Apply**.
The **UI Design Selector** window design changes, to give you a preview of the design you chose for the Sony software.
- 5 To try another design, click << or >>.
- 6 Click **OK** once you are satisfied with your choice.
The **UI Design Selector** dialog box disappears and changes the window design of Sony software as you selected.

Setting a Sony wallpaper

Your Sony VAIO computer offers you, among many other features, a choice of wallpapers. You can change the wallpaper, the background of your desktop, as many times as you like. There are several VAIO-specific wallpapers to choose from.

To set another VAIO wallpaper, proceed as follows:

- 1 Click **Start**, point to **Settings** and click **Control Panel**.
The **Control Panel** window appears.
- 2 Double-click the **Display** icon.
The **Display Properties** dialog box appears.
- 3 Click the **Background** tab.
A list of Windows and VAIO wallpapers is displayed.
- 4 Select a wallpaper.
You can see a preview of this wallpaper in the monitor above the background list.
- 5 Adjust the position of the wallpaper with the **Picture Display** drop-down list and the **Pattern** option.
- 6 Click **Apply** when you have found the appropriate wallpaper.
- 7 Click **OK** to close the **Display Properties** dialog box.
The wallpaper is applied to your computer.



A higher screen resolution reduces the size of items on your screen and increases the relative space on your desktop.

You may not be able to increase the screen resolution above a certain level. Your monitor and video adapters, for example, determine to which extent you can change the resolution.

Selecting a screen saver

A screen saver is an animated image that is activated on a computer display when no user activity has been sensed for a certain time. The original purpose of a screen saver was to prevent burn-in (the burning of an image into the phosphor inside the cathode ray tube after hours of the same image being rescanned). In fact, today's CRT display technology makes burn-in unlikely except under extreme conditions.

Your computer comes with built-in screen savers that you can select.

To change the built-in screen saver, proceed as follows:

- 1 Right-click on the desktop.
- 2 Select **Properties**.
The **Display Properties** dialog box appears.
- 3 Select the **Screen Saver** tab.
- 4 In the **Screen saver** drop-down menu, select a screen saver.
When you want to see how the screen saver looks like, click **Preview**.
- 5 Click **Apply** and **OK**.

Installing and updating applications

This section explains how to install, run or uninstall a software. Furthermore, you will learn how to download the latest updates from our website.

- ❑ Installing software ([page 98](#))
- ❑ Changing or removing software ([page 100](#))
- ❑ Downloading software ([page 101](#))

Installing software

To install bundled software from the supplied application CD, please read the printed **Application CD Guide** for details. To install other software, use the following procedure.


Before installing the applications:

- Install and connect a hardware device, if necessary (see the **Managing drivers (page 102)** section);
- Close all open applications.

To install an application, proceed as follows:

- 1 Click **Start**, point to **Settings** and click **Control Panel**.
The **Control Panel** window appears.
- 2 Double-click **Add or Remove Programs**.
The **Add or Remove Programs** dialog box appears.
- 3 Click **Add New Programs**, and then click **CD or Floppy**.
The **Install Program From Floppy Disk or CD-ROM** window appears.
- 4 Insert the first installation floppy disk or CD-ROM and click **Next**.
The **Run Installation Program** appears.
- 5 Click **Browse...** to find the installation program.
The **Browse** window appears.
- 6 Select the installation program and click **Open**.
The path of the installation program appears in **Open:** text box.
- 7 Click **Finish**.
A **Licence Agreement** dialog box might appear.
- 8 Read the agreement and click **Yes** to accept.
You are asked to define the location where you want to install the software.



- 9 Click **Browse** to select the folder and click **Next**.
If necessary, select the type of installation you wish and click **Next**.
The software installation begins.
Make sure to select **Yes, I want to restart my computer now** if you are asked to.
 - 10 Click **Finish**.
Installation is complete and your computer restarts.
-  When using **Add or Remove Programs**, you can only install programs that were written for Windows® operating systems.

Changing or removing software

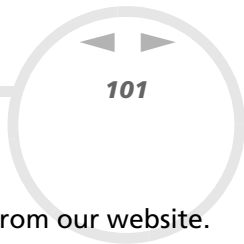
You can remove or change a software application any time you like. Before proceeding, close the application you want to change/remove.

To change or remove software, proceed as follows:

- 1 Click **Start**, point to **Settings** and click **Control Panel**.
The **Control Panel** window appears.
 - 2 Double-click the **Add/Remove Programs** icon.
The **Add/Remove Programs** dialog box appears.
 - 3 Select the software you want to change or remove.
 - ❑ To change a program, click **Change/Remove** or **Change** and follow the on-screen instructions.
 - ❑ To uninstall a program, click **Change/Remove** or **Remove**, then click **Next** followed by **OK**.
If the **Locked file detected** dialog box appears, click **Reboot**. The computer restarts once uninstallation is completed and all previously used files are deleted.
If the **Shared file detected** dialog box appears, it is recommended that you click **No** to keep shared files.
Click **Close**.
The software is uninstalled.
- ! When you click Change or Remove, some programs may be removed without any further warning. **Make sure you are certain you want to remove it beforehand.**

 You can sort programs by selecting different options in **Sort by**.

Add or Remove Programs will only remove programs that were written for Windows® operating systems. For other programs, check the documentation to see if other files (such as .ini files) should be removed.




Downloading software

Please note it is possible to download the latest upgrades of software for your computer from our website. Just click the following link to access it: www.vaio-link.com

To download the latest upgrades, proceed as follows:

- 1 Go to www.vaio-link.com and choose your language.
- 2 Click the **VAIO User** button.
- 3 Fill in the two codes and enter the site.
- 4 Select **Downloads** and follow the procedure.
A list of available downloads appears.
- 5 Choose the appropriate upgrade and follow the online instructions to download it.

 To install your application, see the **Installing software (page 98)** section.

Managing drivers

A driver is a software enabling you to use hardware devices. For example, in order for you to be able to use a printer, you must first install its driver. Many drivers, such as the mouse driver, come with the operating system.

This section explains how to install, check, update or uninstall a driver.

Separate repair/recover procedures are also detailed (**Emergency Repair Disk** creation).

Finally, you will learn how to download the latest drivers from our site.

- ❑ [Installing a driver \(page 103\)](#)
- ❑ [Checking the driver's installation \(page 104\)](#)
- ❑ [Updating a driver \(page 106\)](#)
- ❑ [Uninstalling a driver \(page 107\)](#)
- ❑ [Creating an Emergency Repair Disk \(ERD\) \(page 108\)](#)
- ❑ [Downloading drivers \(page 109\)](#)

Installing a driver

To (re)install a Sony driver, see the printed **Application CD Guide** for details.

If the driver does not come with a specific installation procedure, please proceed as follows to install it:

- 1 Insert the installation CD-ROM or disk accompanying the device into the disc drive.
- 2 Connect the device that needs a driver, to your computer.
The **Found New Hardware Wizard** screen appears.
- 3 Select **Specify a location**, then click **Next**.
- 4 When installing a driver from the provided CD-ROM (or disk) by using a CD-ROM (or disk) drive connected to the computer, select the **Drivers** folder on the disc drive.
- 5 When installing a driver after having copied the contents of the provided CD-ROM (or disk) to your hard disk, browse to the appropriate subdirectory containing the driver. The subdirectory should be found in the folder you copied from the CD-ROM (or disk).
- 6 Click **OK** to begin the search procedure.
- 7 Click **Next** to install the driver.
A new window appears when the driver has been installed.
- 8 Click **Finish**.
You may be asked to restart your machine.
- 9 Click **Yes**.
The driver is installed.



To install your device driver, you must log on to your computer as a user with administrator rights.

Checking the driver's installation

When the computer restarts, check that the device is working properly.

To check the driver's installation, proceed as follows:

- 1 From the **Start** menu, point to **Settings** and then click **Control Panel**.
The **Control Panel** window appears.
- 2 Double-click the **System** icon.
The **System Properties** dialog box appears.
- 3 Click the **Hardware** tab, then click **Device Manager**.
- 4 Double-click the option corresponding to the device you installed, then double-click your device.
The **Properties** dialog box appears.
- 5 Make sure that the **This device is working properly** message is displayed under **Device status**.
- 6 Click **OK**.
Close all the opened windows, your device is ready for use.

The device is not working properly in the following cases:

- Your device is shown in **Device Manager** with a yellow question or exclamation mark.
Right-click your device and click **Uninstall**. Then repeat from step 2 in **Installing a driver (page 103)**.
- Double-clicking the category of your device in the device manager list does not display your device.
You have to remove your device. Please refer to **Uninstalling a driver (page 107)** to remove it. Then repeat from step 2 in **Installing a driver (page 103)**.
- Double-clicking **Other devices** displays your device.
You have to right-click your device, then click **Uninstall**. Repeat from step 2 in **Installing a driver (page 103)**.
- If the **This device is working properly** message is not displayed, the device is not working properly.
Click **OK** to close the **Properties** dialog box, then reinstall the driver as follows:

- ❑ Right-click **Uninstall**.
- ❑ When the **Confirm Device Removal** dialog box appears, click **OK**.
- ❑ Click **Yes** and restart the computer.
- ❑ When the computer restarts, repeat from step 2 in **Installing a driver (page 103)**.
- ❑ If your device is not displayed in the **Properties** dialog box, the device is not working properly. Repeat steps 1 through 4 in the previous sections to check the driver's installation. Click your device, then click **Uninstall** to remove the driver. Click **Yes** to restart the computer. When the computer restarts, repeat from step 2 in **Installing a driver (page 103)**.

Updating a driver

To update the driver, proceed as follows:

- 1 Click **Start** on the taskbar and point to **Settings**.
- 2 Click **Control Panel**.
- 3 Double-click the **System** icon.
The **System Properties** dialog box appears.
- 4 On the **Hardware** tab, click **Device Manager**.
The **Device Manager** screen appears.
- 5 Right-click the hardware and select **Properties**.
The **Properties** dialog box appears.
- 6 On the **Driver** tab, click **Update driver**.
- 7 Follow the instructions that appear on your screen. You can have Windows search for the driver, or point to the driver's location yourself.

Uninstalling a driver

Leave the device connected to your computer while uninstalling the driver.

To uninstall the driver, proceed as follows:


- 1 Click **Start** on the taskbar and point to **Settings**.
- 2 Click **Control Panel**.
- 3 Double-click the **System** icon.
The **System Properties** dialog box appears.
- 4 On the **Hardware** tab, click **Device Manager**.
The **Device Manager** screen appears.
- 5 Right-click the hardware and select **Properties**.
The **Properties** dialog box appears.
- 6 On the **Driver** tab, click **Uninstall**.
- 7 Follow the instructions that appear on your screen. You can have Windows search for the driver, or point to the driver's location yourself.

Creating an Emergency Repair Disk (ERD)

The Windows® 2000 backup utility helps you create a copy of the data on your hard disk. In the event that the original data on your hard disk is accidentally erased or overwritten, or becomes inaccessible because of a hard disk malfunction, you can use the copy to restore your settings.

To create an Emergency Repair Disk, proceed as follows:

- 1 Click **Start**.
- 2 Point to **Programs, Accessories**, then **System Tools** and finally **Backup**. The **Backup** window appears.
- 3 From the **Tools** menu, choose **Create an Emergency Repair Disk**.
- 4 Follow the instructions that appear on your screen.

 You will need a blank 1.44 MB floppy disk to create an Emergency Repair Disk.

It is recommended to recreate an Emergency Repair Disk each time your computer undergoes major changes (new program installation, ...).

The repair process relies on information that is saved in the system root/repair folder. You may not change or delete this folder.

Choosing **Also back up the registry to the repair directory**, will save your current registry files in a folder within your system root/repair folder. This is useful if you need to recover your system in the event your hard disk has failed.

Additional information on the repair process is available in the help files (see the **Getting Started online book** in *Introducing Windows® 2000 Professional*).

Downloading drivers

Please note it is possible to download the latest versions of drivers for your computer on our website. Just click the following link to access it: www.vaio-link.com

To download the latest drivers, proceed as follows:

- 1 Go to www.vaio-link.com and choose your language.
- 2 Click the **VAIO User** button.
- 3 Fill in the two codes and enter the site.
- 4 Select **Downloads** and follow the procedure.
A list of available downloads appears.
- 5 Choose the appropriate driver and follow the online instructions to download it.
To install your driver, follow the instructions you received with the device, or see the printed **Application CD Guide**.

Using the product recovery CD-ROMs

The product recovery CD-ROMs supplied with your computer allow you to perform a full system recovery, and help you reinstall individual applications and device drivers manually.

- ❑ Perform an **Application Recovery** to:
 - ❑ Reinstall an individual driver if a device is not functioning properly.
 - ❑ Reinstall an individual application if you have problems running it.
- ❑ Perform a **System Recovery** in the following cases:
 - ❑ In the event of a serious system crash.
 - ❑ If you want to modify the size of the hard drive partitions.
- ! You can only use these product recovery CD-ROMs on the Sony computer they came with and not on any other Sony PC or other manufacturer's PC.

- ❑ Performing an application recovery ([page 111](#))
- ❑ Performing a system recovery ([page 112](#))
- ❑ Aborting the system recovery process ([page 117](#))

Performing an application recovery

The final CD in the set of product recovery CD-ROMs contains most of the applications that were preinstalled on your computer. Reinstalling a program from this application CD can fix the problems encountered if it does not run correctly anymore, or if Windows[®] is having a problem running a device.

Please read your printed **Application CD Guide** for details on (re)installing bundled applications.

Performing a system recovery

The system recovery process allows you to:

- 1 Reinstall an image of the hard disk as it was before you started using your computer. In the event that your system is seriously damaged, for example, if Windows® does not work as it should, or your PC behaves abnormally, the system recovery will completely reinstall the originally configured system on your C: drive.
- 2 Change the sizes of the two available hard drive partitions, or delete the partitions altogether. If you decide to modify the size of your partitions, the existing data on both C: drive and D: drive will be deleted (see **Using partitioned drives (page 112)**).


Notes on performing a system recovery

- ❑ The recovery process can last up to sixty minutes, and in this time you will be prompted to change CDs.
- ❑ You can recover only the software bundled to your computer. It does not work for the software you have installed subsequently or the data you have created.
- ❑ This procedure recovers the entire system, which means you cannot choose to only recover Windows®.
- ❑ Make sure that your computer is connected to the AC power supply (not to the battery) before you attempt a system recovery.
- ❑ When the recovery is performed, you are recommended to remove the recovery CD-ROM from the drive before restarting the computer.

Using partitioned drives

In **My Computer** or **Windows Explorer** you may have noticed the availability of two drive partitions (C: and D:). Your hard disk drive comes from the factory with 2 logical partitions. This does not mean that your computer contains two physical hard disks.

When you start using your computer, your C: partition (also referred to as C: drive) contains all the files required by Windows® and other pre-installed software, while the D: drive is empty. The D: drive is the ideal storage space for all your documents and files, especially larger ones like digital motion pictures captured by DVgate.

 Although you can perform a system recovery and change the partition settings in order to have one C: drive only, this option is not recommended for using video editing applications like DVgate.

To optimise data storage, use the C: drive to install new applications, and save all your documents and files to the D: drive. Moreover, doing so will prevent the loss of your data in case you need to perform a system recovery.

Do not try to add, delete, or resize partitions unless you really need to. Changing partition settings might delete all your files on the hard disk.

If you need to perform a system recovery, but do not want to lose all the data stored on your hard disk, copy all the files you want to keep on the D: drive. During the system recovery process, choose to keep the current partition information. Doing so will keep your D: drive unchanged after the recovery process.

If you do need to change the size of your partitions, you can do so by choosing **Option Recovery** in the system recovery set-up process. In this case, it is important to be aware that all data on your hard disk will be deleted. If you need to keep existing files, make sure you back them up before performing the system recovery.

Starting the system recovery procedure

To start the system recovery, proceed as follows:

- 1 Turn on your computer (using AC power only) and insert the first system recovery CD-ROM into the disc drive.
- 2 If you are still able to access Windows®, shut down your computer (**Start/Shut Down/Shut down/OK**)*.
- 3 Wait 10 seconds then turn the computer back on.
- 4 The system starts to read the CD automatically and you are asked to wait.
- 5 Click **Next** in the window that appears.
- 6 Read the introduction and click **Next**.
You can now choose the nature of the recovery.

* If your system is severely damaged and you can no longer access Windows®, you will have to turn off the computer by pressing the power button for longer than four seconds. Wait for ten seconds before pressing the button again to turn the power on.

Recovering the system without changing partition sizes

To completely restore the original software, drivers and settings on your computer without changing the partition sizes, choose the first option and apply a Default System Drive Recovery. Performing this recovery means that you will lose all the data stored on your C: drive, but data on your D: drive will remain.

You should allow one hour for the recovery process.

To perform the Default System Drive Recovery, proceed as follows:

- 1 Select the button next to **Default System Drive Recovery (Recommended)**.
- 2 Click **Next**.
You are asked if you are sure you want to recover the system.
- 3 To start the procedure, click **Next**.
- 4 Click **Yes** to confirm.
The recovery process starts.
- 5 When asked to do so, remove the CD and insert the next one.
- 6 When the process is finished, click **OK**.
- 7 Click **Next** in the window that appears.
- 8 Remove the CD from the drive and click **Finish**.
Your system is restored to its initial settings and reboots automatically.

Recovering the system with modified partition sizes

To have the option of changing the partition sizes before completely restoring the original software, drivers and settings on your computer, choose **Option Recovery**.

Changing the partition sizes of the two hard drives means that you will lose all the data stored on both your C: drive and your D: drive.

You should allow one hour for the recovery process.

To perform a recovery with options, proceed as follows:

1 Select the button next to **Option Recovery**.

2 Click **Next**.

You now have three options:

- Default System Drive Recovery, (see **Recovering the system without changing partition sizes (page 114)**).
- Change Partition Size and Recover.
- Recovery To Originally Shipped State.

Manually changing partition sizes

Choosing **Change Partition Size and Recover** allows you to manually select the size of your C: drive, leaving the remaining gigabytes to the D: drive. Meanwhile, all current partition sizes are deleted, the hard disk is reformatted, and all the original software is restored as with a standard system recovery.

You should allow one hour for this process.

To manually change the partition sizes and perform a system recovery, proceed as follows:

1 Select the button next to **Change Partition Size and Recover**.

2 Click **Next**.

3 In the following screen, set the size of your C: drive in gigabytes, or choose to restore the default size by pressing **Default**.

4 Click **Next**.

5 Read the summary of the recovery process about to be performed and click **Next** to start the process.

- 6 Click **Yes** to confirm.
- 7 When asked to do so, remove the CD and insert the next one.
- 8 When the process is finished, click **OK**.
- 9 Click **Next** in the window that appears.
- 10 Remove the CD from the drive and click **Finish**.
Your system's settings are changed and your computer reboots automatically.

Resetting the default partition sizes

If you changed the partition sizes since you bought your Sony computer, choosing **Recovery To Originally Shipped State** allows you to reset the hard drive to its original size. Meanwhile, the current partitions are deleted, the hard disk is reformatted, and all the original software is restored as with a standard system recovery.

You should allow one hour for the recovery process.

To restore the default size of the hard drive, proceed as follows:

- 1 Select the button next to **Recovery To Originally Shipped State**.
- 2 Click **Next**.
- 3 Read the summary of the recovery process about to be performed and click **Next** to start the process.
- 4 Click **Yes** to confirm.
- 5 When asked to do so, remove the CD and insert the next one.
- 6 When the process is finished, click **OK**.
- 7 Click **Next** in the window that appears.
- 8 Remove the CD from the drive and click **Finish**.
Your system is restored to its initial settings and reboots automatically.

Aborting the system recovery process

Before the actual recovery process begins, the VAIO System Recovery Utility makes it easy to cancel any settings you may have made. Most screens remind you about the loss of data that will incur and you can either to go back to the previous screen (press **Back**), or abort the recovery setup altogether. To abort, remove the recovery CD, press **Cancel**, and click **Yes** to confirm.

However, once the recovery process has started, cancelling the job will delete all the current data on your C: drive. If you have made changes to the partition settings, you will lose all data on both hard drive partitions.

 If you do not remove the CD before pressing **Cancel**, the system recovery will start again.