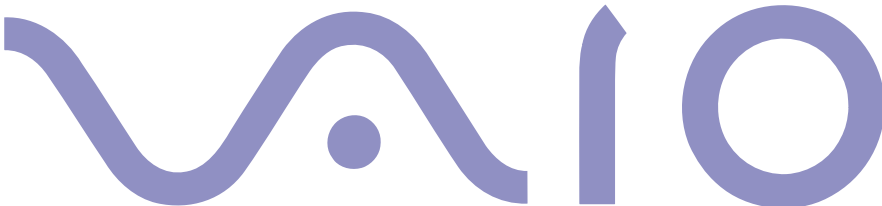




About the Software on your Sony Notebook Computer

PCG-N505SN



NOTICE

This product contains software owned by Sony and licensed by third parties. Use of such software is subject to the terms and conditions of license agreements enclosed with this product. Software specifications are subject to change without notice and may not necessarily be identical to current retail versions.

Updates and additions to software may require an additional charge. Subscriptions to online service providers may require a fee and credit card information. Financial services may require prior arrangements with participating financial institutions.

© 2000 Sony Corporation All rights reserved.

Reproduction in whole or in part without permission is prohibited.

End User Software License Agreement

This End User Software License Agreement (the "EULA") is a legal agreement between you and Sony Corporation (hereinafter referred to as "SONY"), a corporation organized under Japanese Law, the manufacturer of your SONY computer system (the "SONY HARDWARE"). Please read this EULA carefully before installing or using the software distributed together with this EULA (the "SONY SOFTWARE"). By installing or using the SONY SOFTWARE, you agree to be bound by the terms of this EULA. You may use the SONY SOFTWARE only in connection with the use of the SONY HARDWARE. SONY SOFTWARE is licensed not sold.

Notwithstanding the foregoing, software distributed together with separate End User Software License Agreement (the "Third Party EULA"), including but not limited to Windows[®] operating system provided by Microsoft Corporation, shall be covered by the Third Party EULA.

If you do not agree to the terms of this EULA, please return the SONY SOFTWARE together with the SONY HARDWARE to the place where you obtained it.

- 1 License. This SONY SOFTWARE and the related documentation are licensed to you by SONY. This EULA allows you to use the SONY SOFTWARE for your personal use for a single SONY HARDWARE outside a network and only to make one copy of the SONY SOFTWARE in machine-readable form for back-up purposes only.
- 2 Restrictions. The SONY SOFTWARE contains copyrighted material and other proprietary material. In order to protect them, and except as permitted by applicable law, you may not decompile, reverse engineer or disassemble the SONY SOFTWARE in whole or in part. Except for the transfer of the SONY SOFTWARE together with the SONY HARDWARE and prior agreement of the recipient to be bound by the terms and conditions of this EULA, you may not sell or rent the SONY SOFTWARE and its copy to any third party.
- 3 Limited Warranty. SONY warrants the media on which the SONY SOFTWARE is recorded to be free from physical defects for a period of ninety (90) days from the date of purchase as evidenced by a copy of the receipt. During the applicable warranty period, SONY will replace free of charge such media that proved to be defective; provided they are returned properly packaged to the place where you obtained it, together with your name, address, and proof of date of purchase. SONY will have no responsibility to replace media damaged by accident, abuse, or misapplication.

The above limited warranty replaces all other representations, conditions and warranties, whether express or implied, by statute or otherwise and SONY expressly disclaims all other warranties and all conditions including, but not limited to, the implied warranties and/or conditions of satisfactory quality and fitness for a particular purpose. The terms of this limited warranty do not affect or prejudice your statutory rights as an ultimate consumer, neither do they limit or exclude any liability for death or personal injury caused by the negligence of SONY.

- 4 Termination. This EULA is effective until terminated. You may terminate this EULA at any time by destroying the SONY SOFTWARE, related documentation, and all copies thereof. This EULA will terminate immediately without notice from SONY, if you fail to comply with any provision of this EULA. Upon termination you must destroy the SONY SOFTWARE, related documentation, and all copies thereof.
- 5 Governing Law. This EULA shall be governed by and construed in accordance with the laws of Japan.

Should you have any questions concerning this EULA or this limited warranty, please refer to the Customer Service Guide on how to contact VAIO-Link.

Sony, DVgate, i.LINK™, Mavica, PictureGear, Memory Stick and the Memory Stick logo, VAIO and the VAIO logo are trademarks of Sony Corporation. Windows and the Windows 98 logo are registered trademarks of Microsoft Corporation.

Intel, MMX, Celeron and Pentium are trademarks of Intel Corporation.

All other trademarks are trademarks of their respective owners.

Specifications are subject to change without notice.



As an ENERGY STAR Partner, Sony has determined that this product meets the ENERGY STAR guidelines for energy efficiency.

The International ENERGY STAR Office Equipment Program is an international program that promotes energy saving through the use of computers and their office equipment. The program backs the development and dissemination of products with functions that effectively reduce energy consumption. It is an open system in which business proprietors can participate voluntarily. The targeted products are office equipment such as computers, displays, printers, facsimiles and copiers. Their standards and logos are uniform among participating nations.

ENERGY STAR is an U.S. registered mark.

Contents

About the Software on Your Notebook Computer

Sony software	6
Operating System and other pre-installed software.....	11

Using Smart Capture 13

Customizing Your Notebook Computer

Changing the window design with UI Design Selector	21
Sony Notebook Setup.....	22
PowerPanel	24
Displaying Battery Information	30
Starting Your Favorite Software With PPK Setup	33
Selecting the Display Mode	35
Using the Dual Display Function	40

About the Partitions of your Hard Disk Drive 43

About the Software on Your Notebook Computer

Your Sony notebook computer is ready to help you work, play, learn, and communicate as soon as you turn it on. This section gives you an overview of the activities you can perform with your software titles.

For general information and technical assistance, please refer to your *Customer Service Guide*.

Sony software



PictureGear

Sony Electronics

Create your own environment with the Digital Image Library (photos, backgrounds, wallpapers, slide shows, etc). PictureGear is your assistant for creating and implementing personal screen savers... You can even animate your preferred gifs with Gif Animation Tools or create labels for all your medias with PictureGear Label Maker.

For details, please read the PictureGear Help file.



PPK Setup

Sony Electronics

PPK Setup sets the Programmable Power Keys . The settings enable you to start any application you want, to establish a dialup connection or read an e-mail by simply pressing a Programmable Power Key in combination with other control keys. See the chapter “Starting Your Favorite Software With PPK Setup” on page 33 and the PPK Setup Help file for details.



Media Bar (DVD Player* / MD Player)

Sony Electronics



The Media Bar allows you to play audio and video CDs and DVD videos* in the DVD-ROM / CD-ROM drive or play audio or video files in various formats on your hard drive. Video images are displayed in a separate Movie window, which you can move and resize (to full screen).

When you connect a Sony MD deck that includes a CONTROL A1 or Control A1 II jack to your computer, you can use MD Player to operate the MD deck from the computer.

In addition to the normal MD playback operations, you can edit MiniDiscs® while viewing the computer's display and input disc names and track names using the computer's keyboard.

If you connect a Sony CD Player that includes a CONTROL A1 or Control A1 II jack to the MD deck, you can also operate the CD player (playback) from the computer and carry out drag-and-drop recording from a CD to an MD.

For details, please read the Media Bar Help file.

* Depending on the model.



DVgate Still

Sony Electronics

Attaching a DV device to the i.LINK™ connector enables you to transfer the images you have captured to your hard drive. DVgate Still displays digital video images sent from a digital video cassette recorder or a digital video camera recorder, and captures them as still pictures on your notebook computer.

For details, please read the DVgate Still Help file.





DVgate Motion

Sony Electronics

DVgate Motion is a kit of 4 complementary applications: DVgate Motion, DVgate Assemble, DVgate Scan and DVgate Clip.

Edit the rushes you have shot with your digital video camera recorder using this video-capture application, specially tuned for high-quality numeric movies. When connected to your camera via i.LINK™, your computer operates as an editing desk that can preview, cut and assemble your selection and save the sequences in AVI format. For details, please refer to the Help file of DVgate Motion.



Smart Capture

Sony Electronics

Connect a digital camera to your computer to shoot still images and video clips, which you can view or send by e-mail. The Smart Capture Finder displays images from the camera and allows you to adjust the settings or create effects.

Smart Capture enables you to capture images via i.LINK™ compatible devices or create a panorama picture using the panorama assist function.

See "Using Smart Capture" on page 13 for more details or refer to the on-line help files.



Smart Connect

Sony Electronics

With Smart Connect you can copy, edit or delete files on another VAIO computer (equipped with Smart Connect) connected to your computer with an i.LINK™ cable.

You can also print a document on a printer connected to another VAIO computer.





Smart Label

Sony Electronics

You can record a voice memo and shoot an image, then post the memo and the image on the desktop. The recorded file will be easily recognized thanks to the label that appears on your desktop.

For details, please refer to the Smart Label on-line help file.



Smart Publisher

Sony Electronics

With Smart Publisher, you can send memos to the Internet by e-mail and upload files to your Web pages.

For details, please read the Smart Publisher Help file.



Smart Write

Sony Electronics

As easy to use as a standard word processor, Smart Write accepts hand-written information (use your Pointing device as a pen).

When sending memos, insert an image created using Smart Capture, or record a voice memo, and sign it using Smart Write.

For details, please read the Smart Write Help file.



BatteryScope

Sony Electronics

BatteryScope is a flexible battery management system that gathers critical information from the battery in your notebook computer, processes it, and displays the information on the screen in a way that is easy to understand. For details, please read the chapter "Displaying Battery Information" on page 30 or the BatteryScope Help file.



PowerPanel

Sony Electronics

The PowerPanel utility controls the power management of your notebook computer and provides key information about system activity and battery life. Automatic power management selects the most appropriate profile, depending on the application you're working with and the conditions of use.

See the chapter "PowerPanel" on page 24 for more information. PowerPanel Help also provides further details.



Sony Notebook Setup

Sony Electronics

Use the Sony Notebook Setup to confirm system information, specify preferences for system behavior, and change hardware settings for your Sony Notebook computer.

For more information, refer to the chapter "Sony Notebook Setup" on page 22 or click Help on the Notebook Setup screen to display the help file.



UI Design Selector

Sony Electronics

You can change the window design of the Sony Software compatible with UI Design selector. See "Changing the window design with UI Design Selector" on page 21.



Product Recovery CD-ROM

Sony ITE

The Product Recovery CD-ROM allows you to reinstall individual applications and device drivers if they are corrupted or accidentally erased. It also allows you to restore the software titles that were shipped with your computer if they become corrupted or are erased accidentally. Reinstalling an individual device driver or software title may correct a problem you are experiencing with your computer, and you may not need to recover the entire contents of your hard drive.

! You can only use this Recovery CD-ROM on the Sony notebook you purchased and not on any other Sony PC or other manufacturer's PC.

Operating System and other pre-installed software



Windows® 98 Second Edition

Microsoft Corporation

Microsoft® Windows® 98 Second Edition makes your computer work better by integrating tightly with the Internet and providing better system performance and easier system diagnostics and maintenance. With Windows® 98 Second Edition, your system plays better as well with support for the latest graphics, sound, and multimedia technologies, easy addition and removal of peripheral devices, and the convergence of the TV and PC in your home. This exciting new operating system builds on the groundbreaking features introduced with Windows® 98. At the same time, Windows® 98 Second Edition maintains the best support for older Windows-based applications and technologies. For questions and technical assistance, go online to:

<http://www.microsoft.com/support/>



Internet Explorer 5.0

Microsoft Corporation

Internet Explorer is the Internet browser of Microsoft. The Setup Wizard configures your computer to connect automatically to the service provider of your choice. A full e-mail package enables you to send and receive mail—including attached files—across the Internet. NetMeeting, Outlook Express and Microsoft Chat are just some of the components bundled with Internet Explorer 5.0. A complete online tutorial helps new users become comfortable using the Internet. For questions and technical assistance, go online to:

<http://www.microsoft.com/support/>



Adobe® Acrobat® Reader 4.0

Adobe Systems Incorporated

Acrobat Reader software allows you to view, navigate, and print electronic documents in Adobe Portable Document Format (PDF), an open file format that is intended to preserve the fidelity of documents created on all major computer platforms. Once Acrobat Reader is

installed, you can open and view PDF files from within your Web browser by clicking on a PDF file embedded in a HTML file. You quickly see the first page while the rest of the document is being downloaded. For questions and technical assistance, go online at <http://www.adobe.com>



QuickTime 4.0

Apple

QuickTime is the Apple technology that makes video, sound, music, 3D and virtual reality come alive for your Internet browser and Windows.

With QuickTime VR, rotate objects, zoom in or out, look in any direction and navigate from one scene to another.

For further information, see the web site at:

<http://www.apple.com/quicktime/>



VirusScan

McAfee (Network Associates)


VirusScan is McAfee's powerful and advanced anti-virus solution.


If a virus is detected, VirusScan can attempt to remove it from the infected file, move the file to a quarantine location, or delete the infected file.

VirusScan is an important element of a comprehensive security program that includes a variety of safety measures such as regular backups, meaningful password protection, training, and awareness. For details, please refer to the on-line help files or for technical support, go to

<http://www.mcafee.com>



 You can capture still images from i.LINK™ compatible devices. Refer to "Connecting a Digital Video Camera Recorder" in your Notebook Computer user guide for connecting the device. Also consult the Smart Capture on-line help for information on installation and use.

 See the Smart Capture software on-line help for more information on installation and use.

You can capture the following still images sizes : 640 x 480, 320 x 240, 160 x 120, 80 x 60, and 40 x 30 pixels.

When capturing a small resolution image (i.e. 80 x 60 or 40 x 30 pixels) , the displayed image on the finder window may appear blurred.

A gap may appear when a rapid-moving object is displayed. However this is not a malfunction.


Using Smart Capture

You can use Smart Capture to shoot still images and record video clips from a digital camera connected to your computer.

Capturing a still image

- 1 Launch Smart Capture from the Start menu, in "Programs / Smart Capture".
- 2 The finder window will appear, displaying the image of the subject.
- 3 Adjust the focus on the subject you want to shoot.
- 4 Click the CAPTURE button on the Smart Capture window. The Still Viewer window will appear with the image you shot in the Still Image Display area.



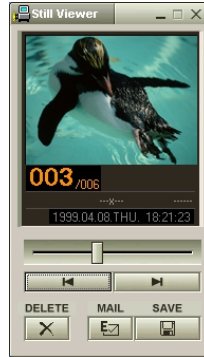
- 5 To end Smart Capture click the  button in the top right corner of the window.


👉 You can create a panorama picture by using PictureGear 2.5SE or higher. See the software on-line help for information on installation and use.

You can capture still images and video clips from a digital video camera using Smart Capture.


Displaying the captured images in Still Viewer

From the Start menu, select Programs, Smart Capture and click Still Viewer. You can display, save or delete your images or send them by e-mail.





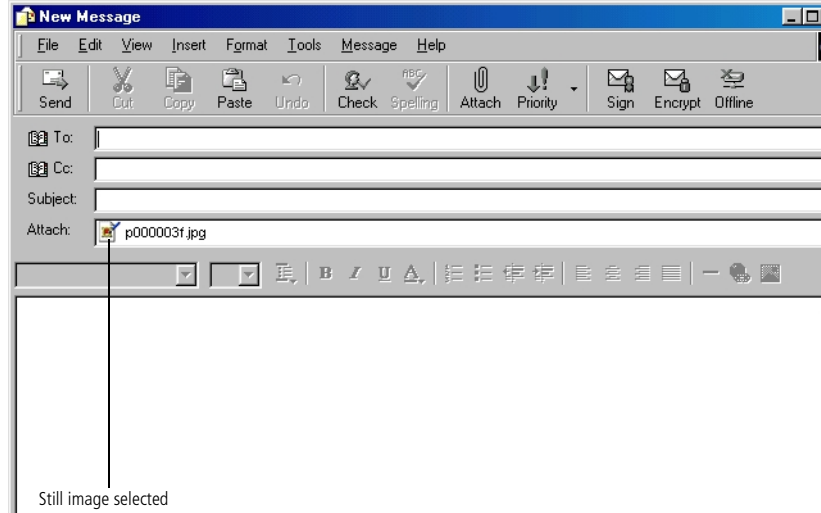
To end Still Viewer click the  button.




 You need to set up MAPI when using the e-mail software. See the manual supplied with the e-mail software for more information on sending e-mails.

To send a still image via e-mail

- 1 Click the Start button on the Windows® 98 taskbar.
- 2 Point to Programs and click Smart Capture.
- 3 Click Still Viewer.
- 4 Select the still image you want to send via e-mail, using  or .
- 5 Click MAIL. Your e-mail window will appear with the selected file attached to your message.



- 6 Send the e-mail.

 You can shoot video clips in the following formats :

Non-compressed :

- ❑ Video 160 x 120, 24 bits, max. 10 frames/sec.
- ❑ Audio PCM, 11.025 kHz, 16 bits, monophonic

Compressed :

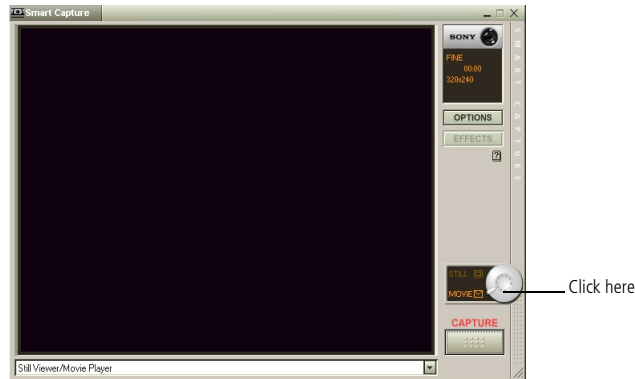
- ❑ Video MPEG1 160 x 112, maximum of 30 frames/sec (effective maximum equivalent to 10 frames/sec).
- ❑ Audio MPEG1, 44.1 kHz (effective maximum equivalent to 11.025 kHz), monophonic.

A gap may appear when a rapid-moving object is displayed. However this is not a malfunction.

Shooting a video clip

You can use Smart Capture to shoot (capture) video clips with a Video Camera connected to your computer, as well as play them or send them via e-mail.

- 1 Launch Smart Capture.
Select MOVIE using the Switch Capture Mode Button.



- 2 The image will appear in the finder. Turn the camera towards the subject.
- 3 Adjust the image.
- 4 Click the CAPTURE button to shoot a video clip (you can shoot up to 60 seconds, according to the settings you chose in the Recording options section).
- 5 Click the CAPTURE button when finished.
The Movie Player window will open and the captured video clip will appear in the Movie Player window.



Captured video clip

- 6 Click ▶ to playback the images. Click || to pause, ■ to stop playback.
- 7 To end Smart Capture, click .




To playback captured video clips

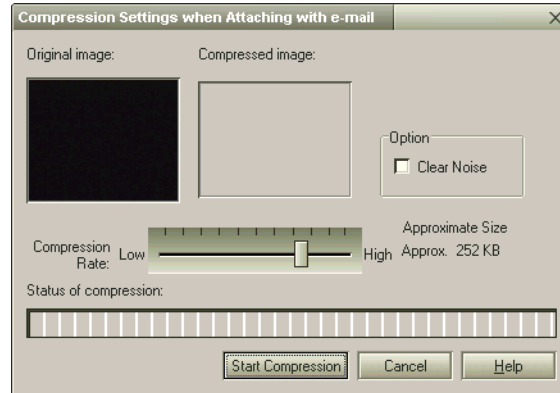
- 1 Start the Movie Player software.

*To send a video clip via e-mail*

If you shoot a video clip in a low resolution format, you can send it by e-mail.

- 1 Click the Start button on the Windows® 98 taskbar.
- 2 Point to Program and then Smart Capture.
- 3 Click Movie Player.
- 4 Click MAIL.
- 5 The Compression Settings window will open. Choose the compression rate by moving the slider.

 See the manual supplied with the e-mail software for more information on sending e-mails.



- 6 Click Start Compression. When compression is completed, a window message will ask you if you want to attach the file to your e-mail.
- 7 Accept and send the e-mail.



Customizing Your Notebook Computer

You can customize the settings of your notebook computer. The following sections briefly describe how to change your computer's settings. You can also refer to the Help files of the software for more detailed information.

In addition, you can select the display modes via NeoMagic® and enjoy the benefits of displaying your desktop on two screens.



Changing the window design with UI Design Selector

You can change the window design of Sony software compatible with UI Design Selector.

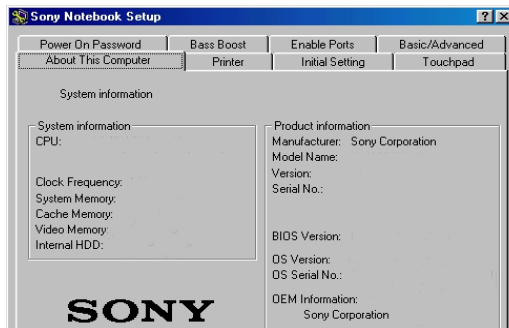
- 1 Click Start, point Settings, then click Control Panel.
- 2 Open UI Design Selector.
- 3 Click on << or >> and select the design you like.
- 4 Click Apply.
- 5 The UI Design Selector window design changes, to give you a preview of the design you chose for the Sony Software.
- 6 To try another design, click on << or >>.
- 7 Click OK.
UI Design Selector closes and changes the window design of Sony software as you selected.



Sony Notebook Setup

To display the Sony Notebook Setup screen:


- 1 Click the Start button on the Windows® 98 taskbar.
- 2 In Programs, select Sony Notebook Setup. The “Basic” window will appear; you can then enhance the features by clicking the “Basic / Advanced” tab.




- 3 Select the tab for the item you want to change.
- 4 After you finish, click OK.

Notebook Setup Tabs

Tab	Description
About This Computer	Display system information, including memory capacity, serial number, and BIOS version.

 For more information about each option, click Help on the Notebook Setup screen to display the help file.

Printer	Select printer port mode settings.
Initial Setting	Select the drive and device order you wish to use for loading the operating system. You can specify the hard drive as well as other drives inserted into your computer. You can change the volume of the sounds while the operating system is loading.
Touchpad	When you connect an optional mouse to your computer, you can disable your touchpad. You can also customize your mouse settings using the mouse utility.
Bass Boost	Turn the Bass Boost function on / off (only with headphones). You can also check the effect of the Bass Boost function by selecting a sample from "soundfile" and playing it.
Power On Password	Set the password to secure your computer.
Enable Ports	Disabling ports releases resources to the system. To change the serial or infrared settings, click Advanced on the Basic/Advanced tab
Basic/Advanced	Toggle between Advanced mode (additional screens with advanced settings) and Basic mode of display. Advanced mode includes Serial, Infrared and View Resources tabs. .

 When you use the battery pack as power source, your system selects the Maximum Battery Life power management profile by default. If you select a different power management profile while using battery power, the same profile will be automatically selected the next time you use the battery pack to power your computer.

PowerPanel

Controlling Power Management

The PowerPanel utility controls the power management of your notebook computer and provides key information about system activity and battery life. In combination with BatteryScope, the automatic power management selects the most advantageous profiles, or lets you customize the profiles you choose, according to your own needs, with the goal of extended battery life.

PowerPanel main features

- ❑ Automatic Profile Selection (APS) based on the currently active application
- ❑ Ability to select special Power Profiles manually from the menu
- ❑ Ability to edit and create new profiles
- ❑ A toolbar shared with BatteryScope
- ❑ Works in harmony with Windows settings.

To activate PowerPanel

When you start the computer, the PowerPanel  icon appears in the task tray by default.





- ❑ When pointing on the PowerPanel icon, you will see a tooltip with the active Power Management profile.
- ❑ You can select a power profile from the menu or a Power Management profile by right-clicking this icon.
- ❑ You can use the PowerPanel's toolbar as well:
 - 1 Right click the taskbar at the bottom of the screen.

- 2 Select Toolbars from the pop-up menu, then click PowerPanel. The PowerPanel will appear on the task bar (you can change it into a floating window by dragging and dropping it on your desktop).
- 3 Click the button you want to set. The appropriate Power Management command will be activated.

Power Management Profiles




PowerPanel provides several predefined power management profiles. Each profile consists of a group of specific power management settings that are designed to meet specific power management goals, ranging from maximum power management to no power management.

Main preset profiles

<i>Icon</i>	<i>Description</i>
	Maximum Battery Life – Provides power saving features to give you maximum battery life and good performance. It reduces the brightness of the display and puts it into System Suspend mode after a specified time period.
	Maximum Performance – Provides the best system performance while still conserving power.
	AC Profile – The power management state when AC power is in use. PowerPanel automatically loads the AC profile unless you disable this feature.
	Power Management Off – Turns off all power management features such as System Idle, System Suspend and Hibernation modes.

Power Management Commands

PowerPanel provides power management commands that you can use to activate specific power management functions and to control power for a specific device. You might use these commands when you want to override a profile setting or initiate an immediate action, such as putting the system into Video Standby mode before the Video Standby timer expires.

Icon	Description
	System Idle - This mode is convenient if you don't need to use your computer for a short period. The hard disk and the video display enter a low power state and the CPU clock and processor stop. To return the system to the active state, press any key or the power switch on your computer.
	System Suspend - Puts the system into System Suspend mode, a power management state that saves the state of the system and peripheral devices in memory (RAM). Power consumption reduces to a minimum, and the system remains on. To return the system to the active state, press any key or the power switch on your computer.
	System Hibernation - Provides for the lowest level of power consumption. The system writes the state of the system and peripheral devices to the hard disk and turns off the system power. To return the system to the original state, use the power switch to turn on power.



LCD (Video) Standby – Turns off the LCD to save power. If you turn off the Video Standby timer, the display remains active except when the system enters System Suspend mode. The video display system is one of the largest consumers of power in the system.

Automatic Profiles Selection (APS)

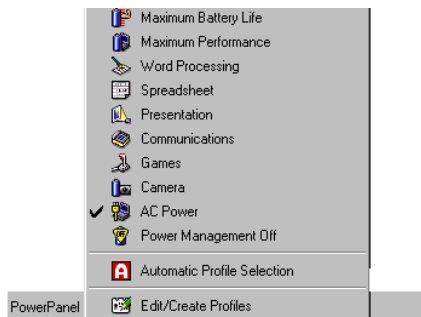
A Power Profile is a set of timer values for a variety of system devices. PowerPanel automatically selects the profile associated with the application you're using and changes profiles as you switch between applications.




The Power Management lets your system enter energy saving modes by levelling some energy consuming parameters, such as LCD brightness, or hard disk activity.



Choosing Automatic Profiles

By right-clicking the PowerPanel icon on the task tray, you can choose “Automatic Profile Selection”: this automatically enables PowerPanel set the power management settings:



Icon	Description
	Automatic Profile Selection – Analyses the performance of each application you choose and matches the profiles to its needs.
	Word Processing – Optimizes power management with longer timeouts on the hard disk and display screen. You can also establish settings for LCD (Video) Standby, Hard Disk Standby, and System Suspend to optimize power management for your system.
	Spreadsheet – Reduces the LCD brightness to “medium”, as your software doesn’t require higher performance. The sleep timer is activated.



Presentation – Keeps the display on at all times while it conserves power. This option is ideal for slide show presentations. You can establish settings for LCD (Video) Standby, Hard Disk Standby, and System Suspend to optimize power management for your system.



Communications – Extends battery life by initiating a quick display time-out. You can also establish settings for LCD (Video) Standby, Hard Disk Standby, and System Suspend to optimize power management for your system.



Games – Disables the display and the Hard Disk Spindle Down timer.



Camera – Optimizes performance and power requirements for camera usage.

Customizing PowerPanel

You can customize the PowerPanel toolbar to suit your portable computing needs. You can edit the pre-defined Power Management settings or create new profiles. Please refer to PowerPanel Help for more information.



Displaying Battery Information

You can display detailed information for the battery used in your computer. The following sections briefly describe how to display your computer's general battery information. You can also refer to the BatteryScope Help for more detailed information.

Activating BatteryScope

To activate BatteryScope

When you start your computer, the BatteryScope icon appears on the taskbar by default. If the toolbar does not appear:

- 1 Right click the taskbar at the bottom of the screen.
- 2 Select toolbar from the pop-up menu, then click BatteryScope.

The BatteryScope appears on the task bar (you can change it into a floating window by dragging and dropping it on your desktop).

When you move the pointer over the battery icon on the task tray, a tooltip appears indicating the total capacity remaining in the battery and the estimated time until the battery fully discharges.

You can also view battery gauges on the shared PowerPanel and BatteryScope toolbar.

- ❑ **Percentage indicator**
Displays the percentage of the remaining capacity.
 - ❑ **Time indicator**
Displays estimated time (hours/minutes) remaining before the battery fully drains, also referred to as the time-to-empty.
-

Battery Icon Descriptions



<i>Battery icon</i>	<i>Battery status</i>
---------------------	-----------------------



Discharging



Fully charged



Charging



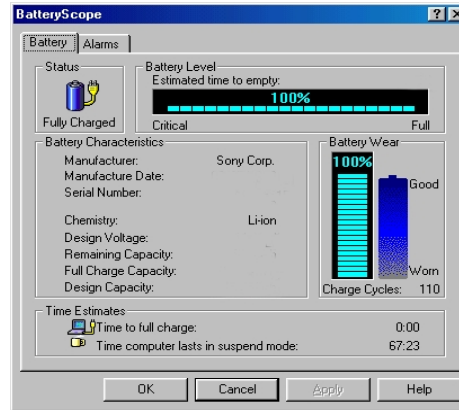
No battery

Displaying Detailed Battery Information

You can obtain detailed information about the battery.

- ❑ Double-click the battery icon on the task tray to display the BatteryScope window.

The screen appears displaying the Battery Tab, which contains information such as the estimated time-to-empty and charging time.



To customize the BatteryScope application bar and alarm system

You can customize the BatteryScope toolbar to suit your portable computing needs as well as to modify the alarm settings. Please refer to the BatteryScope Help for more information.

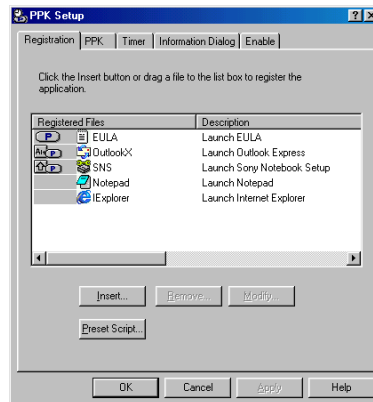
Starting Your Favorite Software With PPK Setup


The PPK Setup software enables you to start your favorite software by simply pressing a programmable power key.

This section briefly describes how to use programmable power keys. You can also refer to the PPK Setup Help for more detailed information.

To use the PPK Setup screen:

- 1 Double-click the PPK Setup icon on the task tray. The PPK Setup screen appears.



- 2 Select the software title you want PPK to launch automatically from the Registered Files list and right-click. The Setup options screen appears.
- 3 Click Set as PPK launch file. The  will appear next to the software title selected.
- 4 Click OK.

Using a Programmable Power Key With Other Keys

You can also choose to start other applications by pressing a programmable power key in combination with the Alt, Ctrl, or Shift keys.

To select the key combination, right-click the application you want to start and select an item from the menu. When you select Set as PPK launch file, you can turn on the power and start the selected application by just pressing a programmable power key. When you select Set as Alt+PPK launch file, Set as Ctrl+PPK launch file, or Set as Shift+PPK launch file, you need to turn on the computer to use these functions.

Using the internal timer:

You can use the internal timer to start software at a specific time. You can use this feature when the computer is in normal, system suspend mode.

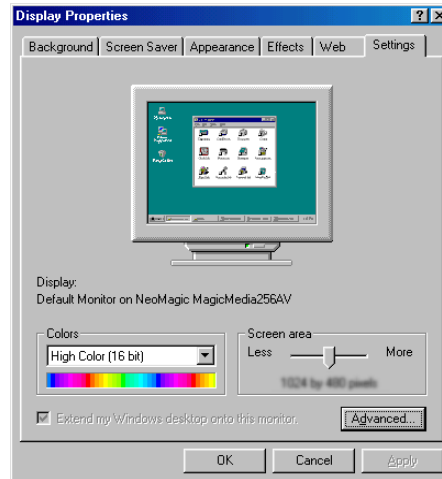


Depending on the types of computer displays and projectors you are using, you may not be able to display the computer's LCD and external display simultaneously.

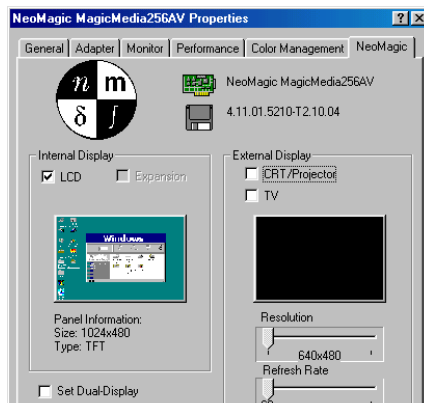
Selecting the Display Mode

When you connect an external display, you can toggle the display mode between the computer LCD and external displays.

- 1 Click the Start button on the Windows® 98 taskbar.
- 2 Point to Settings and click Control Panel.
- 3 Click Display.
- 4 Click the Settings tab. Then click Advanced.



- Click the NeoMagic® tab.



- Select the type of display:

External (CRT/Projector)	Displays an external computer display or RGB connected projector that is connected to the Monitor connector on your computer.
Internal (LCD)	Displays the LCD of your computer.

- Click OK. If you have made changes the System settings change dialog box appears. Select Yes to restart Windows.
- If you have not made changes, click OK to close the Display properties screen.



Display Specifications

LCD Display Mode

<i>Resolution</i>	<i>Number of colors</i>
1024 x 768	16,777,216 (24 bits)*
800 x 600	16,777,216 (24 bits)*
640 x 480	16,777,216 (24 bits)*

* Achieved by Graphic Accelerator's dithering function


External Display Mode(1)

<i>Resolution</i>	<i>Number of colors</i>
1280 x 1024	256
1024 x 768	16,777,216 (24 bits)
800 x 600	16,777,216 (24 bits)
640 x 480	16,777,216 (24 bits)

(1) Video modes supported by your notebook's built-in video chip, depending on the actual performance of your external display.



Selecting the Display Mode

 If you select CRT/Projector and turn off the LCD, you can use the Refresh Rate slider to change the display's horizontal frequency. This setting can be made only for CRT display. If you select Independent Display Timing, you can change both the resolution and the refresh rate.(see page).

Using a CRT or Projector

When you select CRT/Projector as the display mode, you can make additional settings, described as follows:


- 1 After selecting CRT/Projector as the type of external display (step 6 in "Selecting the display mode"), click Advanced Settings.
- 2 Click the External Display Options tab.
- 3 Select the following options:

External Display Device:

CRT	Connects with the external computer display.
Projector	Connects with the projector.

Monitor Settings:

Independent Display Timing	Click to place a checkmark when you want to set the resolution and refresh rate differently from the computer's LCD. To change the resolution and refresh rate, see the notes to step 6 in "Selecting the display mode".
----------------------------	--

 You cannot select Independent Display Timing when the display is set to True Color (24 bit).

Projector Settings:

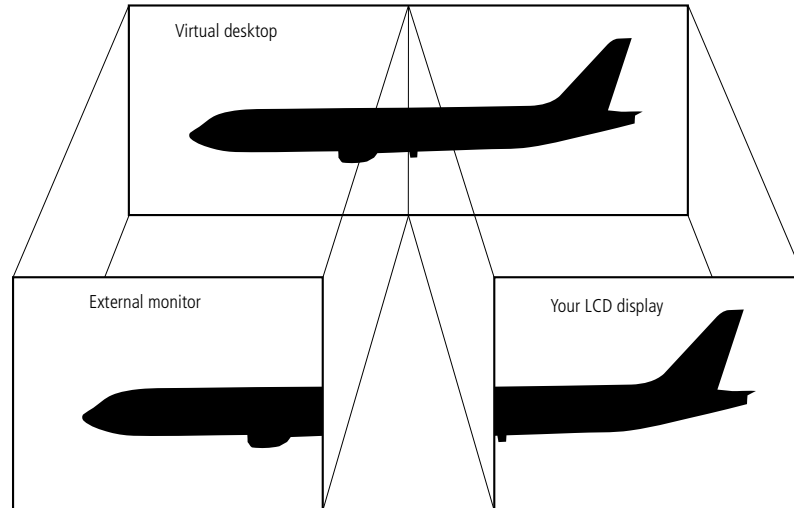
Type	Select the projector's resolution from the drop-down box.
------	---

4 Click OK.



Using the Dual Display Function

The dual display function allows you to distribute portions of your desktop across separate displays. For example, if you have an external monitor attached to the monitor connector, your LCD display and the monitor can function as a single desktop. You can move the cursor off one display and onto the other. This allows you to drag objects, such as an open application window or a toolbar, from one display to the other. This configuration of a single desktop distributed across separate displays is referred to as a virtual desktop.



Selecting dual display mode

You must restart Windows to use dual display mode. Save your work and close any open applications before changing to dual display mode, then follow these steps:

- 1 Click the Start button on the Windows® 98 taskbar.
- 2 Point to Settings and click Control Panel.
- 3 Click the Display icon.
- 4 Click the Settings tab.
- 5 Click the Advanced button.
- 6 Click the NeoMagic® tab.
- 7 Check the Set Dual-Display option and click OK. The System Settings Change dialog box appears.
- 8 Click Yes to restart your system.
- 9 Repeat steps 1 to 3 to display the Display Properties screen.
- 10 Click the display icon number 2.
- 11 Click Yes.
- 12 Click OK.



Setting the colors and resolution for each display

You can set the display colors and resolution for each display that is part of a virtual desktop.

Follow steps 1 to 4 above to display the Display Properties screen. Select the display you wish to change (1 or 2) by clicking on the icon of the display. You can change colors by selecting an option from the Colors list. Use the slider in the Screen area to change the resolution. Click OK or Apply. Click OK to confirm that you want to make the changes.

Customizing the virtual desktop

You can customize dual display mode by changing the position of the two desktops comprising the virtual desktop.

In the Display Properties screen, drag the icons of display 1 or display 2, moving them to a new position relative to each other. The two display icons must be connected to create a virtual desktop. Click OK to apply the change.

Deactivating the dual display setting

You must restart Windows to return to single display mode. Save your work and close any open applications before returning to single display mode. Follow the steps in the section above on Selecting dual display mode. In step 7, remove the check from the Set Dual-Display option. You must restart Windows before the change takes effect.



About the Partitions of your Hard Disk Drive

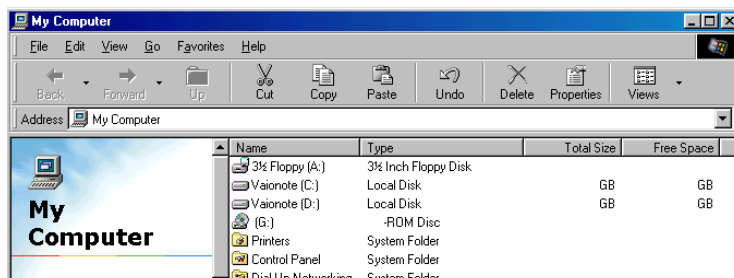
In the "My Computer" window, you may have noticed the availability of two drives: C and D (depending on the model).

Due to the high capacity of your hard disk drive, it may have been partitioned at the factory to allow your system to reach some data more efficiently and quickly, increasing the speed of the operations.

This partition is logical and doesn't mean that your computer contains a physical second hard disk.

Disk space allocation

Your C: drive contains all the files required by Windows and the other pre-installed software. The D: drive is empty in order to allow you to store a big amount of data, like digital motion pictures captured by DVgate Motion or other disk space consuming files.



How to use your partitioned drives.

In order to avoid mishandling or malfunction of your software and files, please take the following precautions:

- ❑ Don't try to resize your partition, the parameters have been set at the factory for an optimal operability of the hardware and software.
- ❑ If you want to exploit the capacity of your D: drive, you can designate this partition to store your documents. Use the C: to install new applications.
- ❑ When you perform a system and application recovery of your computer, your D: drive won't be changed.

