

SONY

About the
Software
on your Sony Notebook Computer

VAIO

NOTICE

This product contains software owned by Sony and licensed by third parties. Use of such software is subject to the terms and conditions of license agreements enclosed with this product. Software specifications are subject to change without notice and may not necessarily be identical to current retail versions.

Updates and additions to software may require an additional charge. Subscriptions to online service providers may require a fee and credit card information. Financial services may require prior arrangements with participating financial institutions.

Sony, VAIO and i.LINK are trademarks of Sony Corporation. The Intel Inside logo, MMX, and Pentium® II are registered trademarks of Intel Corporation. Microsoft, Windows, and the Windows® 98 logo are trademarks of Microsoft Corporation. All other trademarks are trademarks or registered trademarks of their respective owners.

As an ENERGY STAR Partner, Sony has determined that this product meets the ENERGY STAR guidelines for energy efficiency.



The International ENERGY STAR Office Equipment Program is an international program that promotes energy saving through the use of computers and their office equipment. The program backs the development and dissemination of products with functions that effectively reduce energy consumption. It is an open system in which business proprietors can participate voluntarily. The targeted products are office equipment such as computers, displays, printers, facsimiles and copiers. Their standards and logos are uniform among participating nations.

ENERGY STAR is an U.S. registered mark.

© 1999 Sony Corporation All rights reserved.

Reproduction in whole or in part without permission is prohibited.

Contents

About the Software on Your Notebook Computer

Sony software.....	5
Operating system and other pre-installed software.....	9
Communication software.....	11

Using Smart Utilities

Using Smart Capture	13
Using Smart Write.....	21
Using Smart Publisher.....	22
Using Smart Label.....	23

Using Motion Eye utilities

Starting Your Favourite Software with Motion Eye and CyberCode.....	25
Playing Music Using Motion Eye and Sonage.....	28

Using Digital Media Park

Discovering Digital Media Park.....	31
To start the Media Bar	31
Media Bar Functions.....	32

Customizing Your Notebook Computer

Displaying the Sony Notebook Setup Screen.....	33
PowerPanel.....	35
Displaying Battery Information	38
Starting Your Favourite Software with Programmable Power Key (PPK) Setup	40
Selecting the Display Mode	42
Using the Dual Display Function.....	44

About the Software on Your Notebook Computer

Your Sony notebook computer is ready to help you work, play, learn and communicate as soon as you turn it on. This section gives you an overview of the activities you can perform with your software titles.

For general information, please refer to your *Customer Service Guide*.

Sony software



PictureGear

Sony Electronics

Create your own environment with the Digital Image Library (photos, backgrounds, wallpapers, slide shows, etc). PictureGear is your assistant for creating and implementing personal screen savers... You can even animate your preferred gifs with Gif Animation Tools. For questions and technical assistance, please read your *Customer Service Guide*.



DVgate Still

Sony Electronics

Attaching a DV device to the i.LINK connector enables you to transfer the images you have captured to your hard drive. DVgate Still displays digital video images sent from a digital video cassette recorder or a digital video camera recorder, and captures them as still pictures on your notebook computer.

For more details please refer to the on-line help files. For questions and technical assistance, please read your *Customer Service Guide*.



CyberCode Finder

Sony Electronics

The CyberCode Finder is Sony's new interface that provides you with task-relevant information in a clear and attractive manner.

The CyberCodes, 2D bar codes developed by Sony, act as indexes and allow you to bring up the corresponding information on your computer, start registered software and documents as well as print your own CyberCodes.



Sonage

Sony Electronics

You can play and remix the music generated with the movement of the image shot by the Motion Eye integrated camera. Refer to the Sonage help file for details.



Smart Capture

Sony Electronics

Your Notebook Computer features a built-in camera to shoot still images and video clips, which you can view, edit or send by e-mail. The Smart Capture Finder displays images from the camera and allows you to adjust the settings or create effects.

Smart Capture enables you to capture images via i.LINK compatible devices or create a panorama picture using Motion Eye and the panorama assist function. See "Using Smart Capture" on page 13 for more details or refer to the on-line help files. For questions and technical assistance, please read your *Customer Service Guide*.



Smart Label

Sony Electronics

You can record a voice memo and shoot an image, then post the memo and the image on the desktop. The recorded file will be easily recognized thanks to the label that appears on your desktop.

See "Using Smart Label" on page 23 for more details or refer to the on-line help files. For questions and technical assistance, please read your *Customer Service Guide*.



Smart Write

Sony Electronics

As easy to use as a standard word processor, Smart Write accepts hand-written information (use your Pointing device as a pen).

When sending memos, insert an image created using Smart Capture, or record a voice memo, and sign it using Smart Write.

See "Using Smart Write" on page 21 for more details or refer to the on-line help files. For questions and technical assistance, please read your *Customer Service Guide*.



Smart Publisher

Sony Electronics

With Smart Publisher, you can send memos to the Internet by e-mail.

See "Using Smart Publisher" on page 22 for more details or refer to the on-line help files. For questions and technical assistance, please read your *Customer Service Guide*.



Digital Media Park

Sony Electronics



Digital Media Park consists of three main components that work together to let you create an easy-to-use database to quickly locate and play any CD or file, or any individual CD track, in your library.



Digital Media Park lets you:

- Use Media Bar to play music CDs, sound files, play movies and videos on your computer screen from your CD-ROM or floppy drives or from files stored on your hard drive.
- Use Media Library and Media Showcase to catalog and index your entire CD library, including both music and video CDs, by creating playlists.
- Use MD Editor to record single tracks from music CDs, or entire CDs, to mini disc with . Also, you can create custom packages that include tracks from several different CDs stored in one or more CD changers.

See a summary of the features in “Media Bar Functions” on page 32. For questions and technical assistance, please refer to the applications help files or to your Customer Service Guide.



PPK Setup

Sony Electronics

PPK Setup sets the Programmable Power Key (on the front of the keyboard). The settings enable you to start any application you want, as well as establish a dial-up connection or read an e-mail by simply pressing the Programmable Power Key in combination with other control keys. See “Starting Your Favourite Software with Programmable Power Key (PPK) Setup” on page 47 for details.



BatteryScope

Sony Electronics

BatteryScope is a flexible battery management system that collects critical information from the battery in your notebook computer, processes it, and displays the information on the screen in a way that is easy to understand. For questions and technical assistance, please read your *Customer Service Guide*.



PowerPanel

Sony Electronics

As a major component of PowerSuite, the PowerPanel utility controls the power management of your notebook computer and provides key information about system activity and battery life. Automatic power management selects the most appropriate profile, depending on the application you’re working with and the conditions of use.

See “Controlling Power Management” on page 36 for more information. PowerPanel Help also provides further details.



Sony Notebook Setup

Sony Electronics

Use the Sony Notebook Setup to confirm system information, specify preferences for system behavior, and change hardware settings for your Sony Notebook computer.

For more information, refer to “Displaying the Sony Notebook Setup Screen” on page 34 or click Help on the Notebook Setup screen to display the help file. For questions and technical assistance, please read your *Customer Service Guide*.



Product Recovery CD-ROM

Sony ITE

The Product Recovery CD-ROM allows you to reinstall individual applications and device drivers if they are corrupted or accidentally erased. It also allows you to restore the software titles that were shipped with your computer if they become corrupted or are erased accidentally. Reinstalling an individual device driver or software title may correct a problem you are experiencing with your computer, and you may not need to recover the entire contents of your hard drive.

! You can only use this Recovery CD-ROM on the Sony notebook you have purchased and not on any other Sony PC or other manufacturer's PC.

Operating system and other pre-installed software



Windows® 98

Microsoft Corporation

Microsoft® Windows® 98 makes your computer work better by integrating tightly with the Internet and providing better system performance and easier system diagnostics and maintenance. With Windows 98, your system plays better as well with support for the latest graphics, sound, and multimedia technologies, easy addition and removal of peripheral devices, and the convergence of the TV and PC in your home. This exciting new operating system builds on the groundbreaking features introduced with Windows 95. At the same time, Windows 98 maintains the best support for older Windows-based applications and technologies. For questions and technical assistance, go online to <http://www.microsoft.com/support/>



Internet Explorer 4.01

Microsoft Corporation

Internet Explorer is the Internet browser of Microsoft. The Setup Wizard configures your computer to connect automatically to the service provider of your choice. A full e-mail package enables you to send and receive mail—including attached files—across the Internet. NetMeeting, Outlook Express and Microsoft Chat are just some of the components bundled with Internet Explorer 4.01. A complete online tutorial helps new users become comfortable using the Internet. For questions and technical assistance, go online to <http://www.microsoft.com/support/>



Adobe® Acrobat® Reader

Adobe Systems Incorporated

Acrobat Reader software allows you to view, navigate, and print electronic documents in Adobe Portable Document Format (PDF), an open file format that is intended to preserve the fidelity of documents created on all major computer platforms. Once Acrobat Reader is installed, you can open and view PDF files from within your Web browser by clicking on a PDF file embedded in a HTML file. You quickly see the first page while the rest of the document is being downloaded. Use the Acrobat Reader to read the *Sony Notebook Computer User Guide* online. For questions and technical assistance, go online at <http://www.adobe.com>



QuickTime

Apple

QuickTime is the Apple technology that makes video, sound, music, 3D and virtual reality come alive for Windows. Now QuickTime takes your multimedia capabilities to the next level - and the one beyond.

QuickTime: offering the best in video, sound, music, and voice compression technologies, QuickTime also lets you experience video and audio as soon as they arrive.

QuickTime VR transports you to virtual reality. Rotate objects, zoom in or out, look in any direction and navigate from one scene to another.

For further information, see the web site at <http://www.apple.com/quicktime/>

Communication software



Phone Tools

BVRP Software

PhoneTools is a powerful communication tool which provides a full range of features: fax, dialer, telephone directory through an user-friendly interface. In addition, PhoneTools allows complete management of GSM cellular phone: phone directories and short messages. Online manual and contextual help are provided with PhoneTools.



COM One Platinum Card Loader

COM One Company

The Platinum Card loader allows users to upgrade or change the fonctionnalités of the COM One PC card modem (firmware of the card is changed).

The Platinum Card is delivered with PSTN V.90, ISDN* and GSM Sony CMD-Z1* fonctionnalités.

The upgrade or change can be made by selecting a new firmware (card programming) in the list provided with the Loader software or by accessing COM-ONE Web site (<http://www.com1.fr>). See the online Platinum Card Manual.



*See your retailer for GSM, LAN and ISDN kits.

Features offered by PhoneTools to use with a Platinum PC card:

Fax transmission:

Via PSTN:

Your notebook is delivered with PhoneTools and the PC card configured for fax transmission.

Via GSM:

If you own a Sony GSM CMD-Z1 or CMD-Z1 Plus, you can purchase a cable to connect your phone to the PC card: without modifying the settings, PhoneTools will allow you to send and receive faxes through your mobile phone.

Connection cables for Sony GSM CM-DX1000 and CMD-X2000 are also available.

In order to use this GSM, you must update:

- the PC card settings ,by using the COM1 Platinum Loader program (select the settings matching your mobile phone)
- the PhoneTools driver (see Configuration/Hardware Configuration/Select modem): select the MC220 + ISDN + the mobile phone you are using.

With other GSM phones, the set of functions offered by Phonetools may be limited.

Via ISDN:

You can purchase an ISDN kit from COM1 company. It will allow you to send and receive faxes via ISDN.

GSM Special Features:

If you own a Sony GSM CMD-Z1 or CMD-Z1 Plus or CMD-X2000, PhoneTools allows you to:

- send and receive SMS (this depends on your GSM subscription)
- manage your GSM Phone Book for an easy update of your GSM telephone directories.

Dialer function:

When a telephone is connected to the same line as your notebook modem (PSTN), the dialer function allows you to dial from the Phonetools telephone directory. However, the actual telephone conversation will be conducted via your regular telephone.

Data transmission:

Microsoft HyperTerminal provided with Windows 98 allows you to transmit data via PSTN, ISDN and GSM networks.

Using Smart Utilities

Using Smart Capture

Your computer includes a built-in "Motion Eye" camera. You can use the camera software to shoot still images and record video clips.

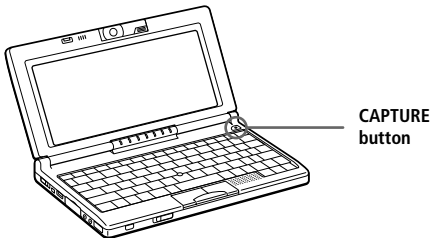


Do not touch the camera lens.

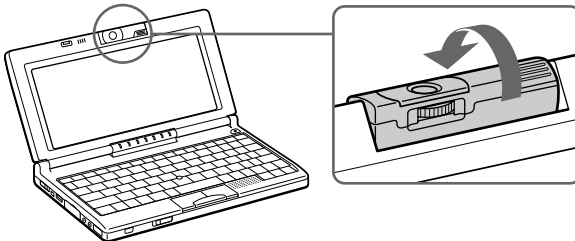
Do not point the camera towards the sun.

Capturing a still image

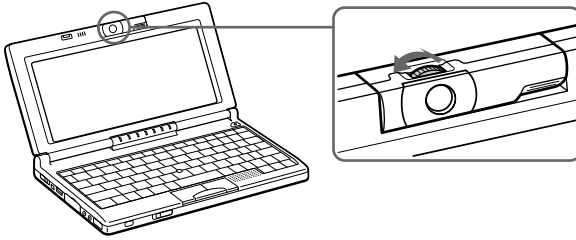
- 1 Press the CAPTURE button. Smart Capture application starts.



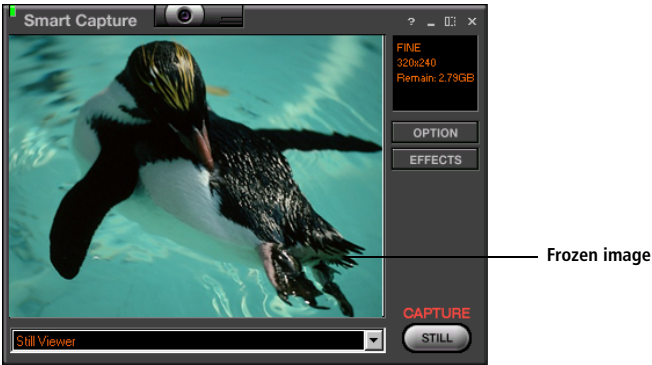
- 2 The finder window appears. Turn Motion Eye lens towards the subject.



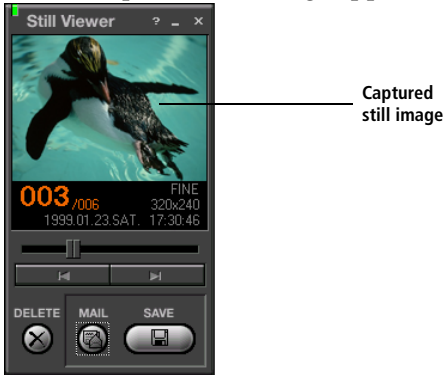
3 Adjust the focus ring.



4 Half-press the CAPTURE button on the computer. The image remains still for a few seconds. To display another image, release the CAPTURE button and press again.



- 5 Fully press the CAPTURE button. The still viewer window will open and the captured still image appears in the still viewer window.



If you turn the lens inwards, Smart Capture goes into mirror mode. You can use the mirror mode to take a still image of yourself. A mirror-image appears in the finder window of the display while shooting, however, after capturing, a normal image appears.

See the Smart Capture software on-line help for more information on installation and use.

You can capture the following still images sizes : 640 x 480, 320 x 240, 160 x 120, 80 x 60, and 40 x 30.

When using an image software to enlarge a small (i.e. 320 x 240 pixels) resolution image, to a larger one (i.e. 640 x 480 pixels), the displayed image may appear blurred or lose contrast.

If you capture a higher resolution still image (640 x 480) and display it in reduced size (40 x 30), the image may have too much contrast.


A gap may appear when a rapid-moving object is displayed. However this is not a malfunction.

To end Smart Capture click the **X** button in the top right corner of the window.

Displaying the captured images in Still Viewer

From the Start menu, select Programs, Smart Capture Applications, and Still Viewer. You can display, save or delete your images or send them by e-mail.



To end Still Viewer click the  button.





You can capture still images from i.LINK compatible devices. Refer to "Connecting a Digital Video Camera Recorder" in your Notebook Computer user guide for connecting the device and consult the Smart Capture on-line help for information on installation and use.

You can create a panorama picture with Motion Eye, by using PictureGear. See the software on-line help for information on installation and use.

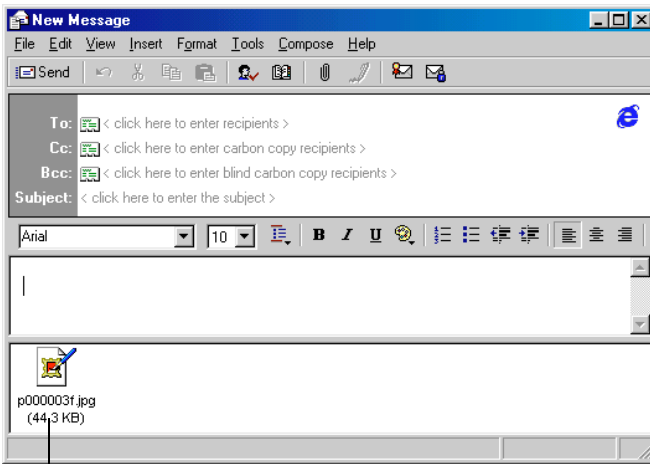
You can capture still images and video clips from a digital video camera using Smart Capture.

When you run applications used by the built-in camera, set the power management profile in PowerPanel to AC Profile or Camera.

To send a still image via e-mail

- 1 Click the Start button on the Windows 98 taskbar.
- 2 Point to VAIO or Program and click Smart Capture Application.
- 3 Click Still Viewer.
- 4 Choose the still image you want to send via e-mail using  or .

- 5 Click MAIL. Your e-mail window will appear with the selected file attached to your message.



Still image selected

- 6 Send e-mail.



You need to set up MAPI when using the e-mail software. See the manual supplied with the e-mail software for more information on sending e-mails.

Shooting a video clip

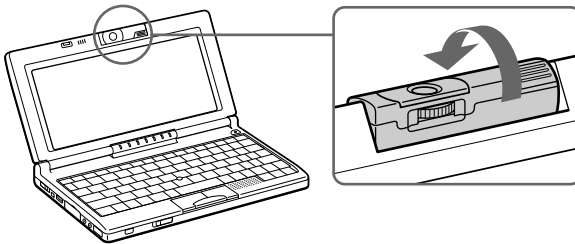
You can use Motion Eye to shoot (capture) video clips, as well as play them or send them via e-mail.

- 1 Press the CAPTURE button.
- 2 The Smart Capture window will appear. Click the bar to select Movie Player.

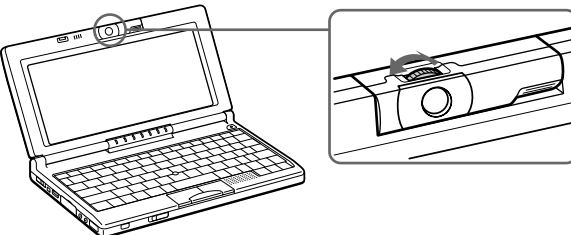


Click here

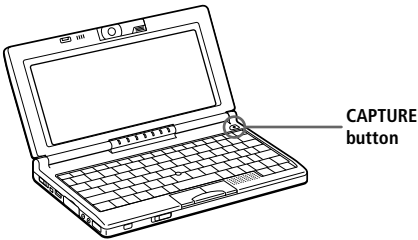
- 3 Turn the Motion Eye lens towards the subject.



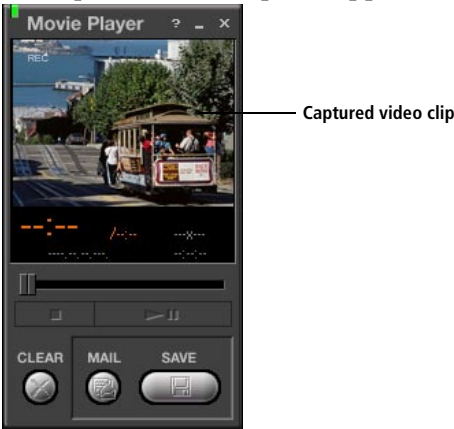
- 4 Adjust using the focus ring.



- 5 Keep pressing the CAPTURE button to shoot a video clip.
You can shoot up to 60 seconds.
The Movie Player window will open.



- 6 Release the CAPTURE button when finished.
The captured video clip will appear in the Movie Player window.



Click ► to playback the images. Click || to pause, ■ to stop playback.

To end Smart Capture, click **x**



If you turn the lens inwards, Smart Capture goes into mirror mode. You can use the mirror mode, to take a video clip of yourself. A mirror-image appears in the finder window of the display while shooting, however, after capturing a normal image appears.

You can shoot video clips in the following formats :

Non-compressed :

- Video 160 x 120, 24 bits, maximum 10 frames/sec.
- Audio PCM, 11.025kHz, 16 bits, monophonic

Compressed :

- Video VDOWave SV-512, 160 x 112, 24 bits, maximum 10 frames/sec.
- Audio GSM 6.10, 11.025kHz, monophonic

A gap may appear when a rapid-moving object is displayed. However this is not a malfunction.

To playback captured video clips

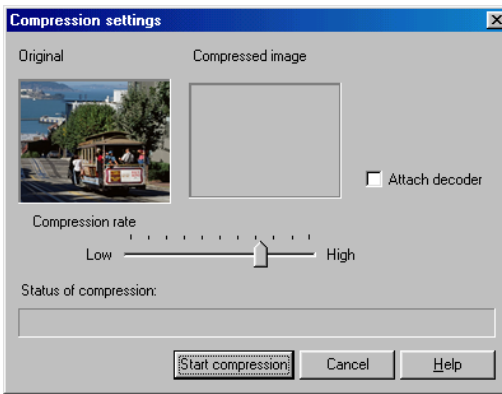
Start the Movie Player software.



Click ► to playback the images. Click || to pause, ■ to stop playback. To end Movie Player click 


To send a video clip via e-mail

- 1 Click the Start button on the Windows 98 taskbar.
- 2 Point to VAIO or Program and click Smart Capture Application.
- 3 Click Movie Player.
- 4 Click MAIL.
- 5 The compression Settings window will open. Choose the compression rate.



Move the slider to the right for high compression or to the left for low compression.

- 6 Click Start compressing. When compression is completed, attach the file to your e-mail.
- 7 Send the e-mail.

 See the manual supplied with the e-mail software for more information on sending e-mails.

Using Smart Write



You can use Smart Write to write down memos, insert an image record, or a voice memo.

To start Smart Write


- 1 Click the Start button on the Windows 98 taskbar.

- 2 Point to VAIO and click Stationary.
- 3 Click Smart Write.
- 4 Type the memo using the keyboard.

To insert an image

- 1 Click  in the Smart Write window.
- 2 Turn the lens of the Motion Eye towards the subject, and click  or press the CAPTURE button on the keyboard.

To record your voice

- 1 Click .
- 2 Click Record and speak into the microphone.
- 3 Click Stop when finished.
- 4 Click OK.

To delete the memos, press the Backspace or Delete key.

To end Smart Write, click the File menu and then Close.


Using Smart Publisher

You can send memos to the Internet.

You need to connect to the Internet before sending memos.

- 1 Click the Start button on the Windows 98 taskbar.
- 2 Point to VAIO and click Stationary.
- 3 Click Smart Publisher.
- 4 Click New.
- 5 Enter information in the profile window and click Next when finished.
- 6 Enter information in the communication window and click Next when finished.
- 7 Click OK.
- 8 Start Smart Write.
- 9 Click the File menu and point to Internet, then click Send.


10 Choose the profile and click OK.

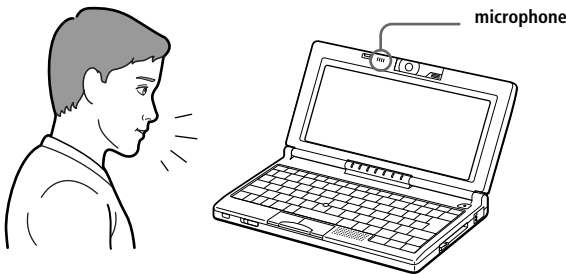
 See the Smart Publisher on-line help for more information on installation and use.

Using Smart Label

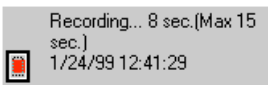
You can record a voice memo and capture an image, then post the memo and the image on the desktop.

To record a voice memo

- 1 Click the Start button on the Windows 98 taskbar.
- 2 Point to VAIO and click Stationary.
- 3 Click Smart Label.
- 4 Double-click  on the bottom right corner of the display, and speak into the microphone.




The label appears on the desktop as you record your voice.



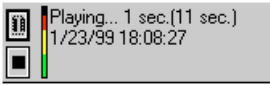
voice memo label

You can record up to 60 seconds.

- 5 Click  to finish.


 See the Smart Label on-line help for more information on installation and use.

To playback the voice memo



Click the label then click ►. Click || to pause, ■ to stop.

To insert images in your memo, using Motion Eye

- 1 Right-click  at the bottom right corner of the display.
- 2 Click Use Camera.
- 3 Turn the Motion Eye lens towards the subject and press the CAPTURE button.

The label appears to represent the image you have shot.

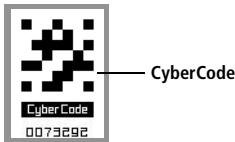
To display the image in its original size, right-click the label you want to display. Select Bitmap from the pop-up menu, then select Original Size from the submenu.

To delete the memo, right-click the label you want to delete. Click Delete.

Using Motion Eye utilities

Starting Your Favourite Software with Motion Eye and CyberCode

You can start your favourite software by holding one of the supplied CyberCode stickers over the Motion Eye integrated camera.



Do not touch the camera lens.

Do not point the camera towards the Sun. Doing so may cause damage to the camera.

You cannot use the CyberCode Finder software together with other software used by the camera such as Sonage or Smart Capture. Close such software before using CyberCode Finder.

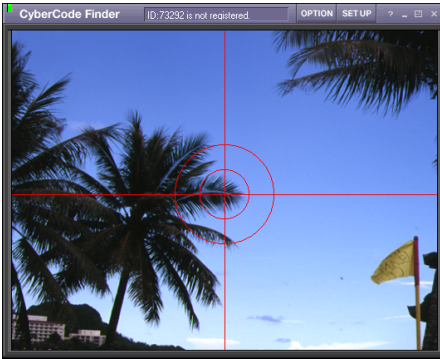
When activating CyberCode Finder with battery power, use PowerPanel to select AC Profile or Camera Profile. Setting to Maximum Battery Life may cause difficulty in reading a CyberCode or result in unstable performance. Refer to "Controlling Power Management" on page 55 for details of PowerPanel.

To start the CyberCode Animated Guides

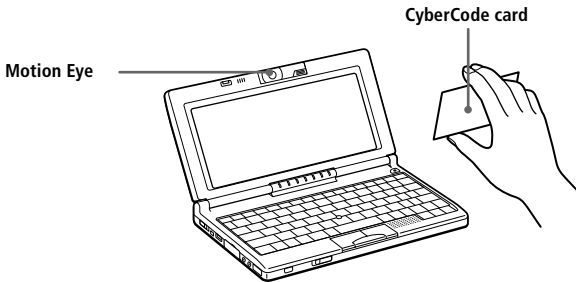
You can display on-line guides about the features of CyberCode.

- 1 Click the Start button on the Windows 98 taskbar.
- 2 Point to VAIO, then Imaging and Audio, then select CyberCode Finder.

- The CyberCode Finder software starts. A window shows what the Motion Eye sees.

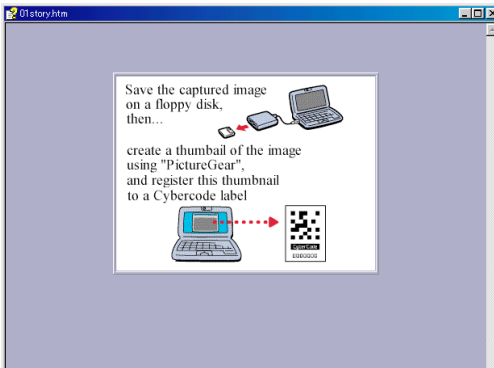


- Hold the CyberCode instruction card (supplied) over the Motion Eye camera.



- A beep will sound and a window shows the numbers of the different chapters of the animated guides.
- Hold the instruction card over the Motion Eye to point the chapter number of the guide you wish. A beep sounds.

- 7 A new window will open and display the on-line guide you chose.



To register a software

You can register most of the software you currently use in such a way that you will be able to launch them with the CyberCode stickers supplied.

- 1 Click the Start button on the Windows 98 taskbar.
- 2 Point to VAIO, then click CyberCode Finder.
- 3 The CyberCode Finder software starts.
- 4 Hold a CyberCode sticker over the Motion Eye camera.
- 5 The CyberCode Setup software starts and displays the CyberCode.
- 6 Enter a title and launch the file, then click OK.
- 7 The file is set to the displayed CyberCode.



You cannot register any of the software used by the Motion Eye camera with a CyberCode sticker.

To start the software

Start CyberCode Finder, then hold a CyberCode sticker to which the software is set over the camera.

To change or cancel registration

Hold the CyberCode sticker over the camera while holding down the Ctrl key.

To play the CyberCode message card

- 1 Start CyberCode Finder.
- 2 Hold the CyberCode message card over the camera so it appears in the finder window.
- 3 A beep will sound and the message starts playback.
- 4 Follow the instructions displayed on the finder.



Refer to the CyberCode Finder help file for detailed information.

Hold the CyberCode sticker firmly and direct it towards the camera. Do not slant the sticker.

If the CyberCode sticker is far from the camera or is not focused, the computer may not be able to launch a file. Hold the sticker at a distance of about 10 cm and adjust the focus ring of the camera. See "Using Smart Capture" on page 13.

If the CyberCode sticker is not shot properly due to glare or reflection, the computer may not be able to launch a file.

You cannot launch any of the software used by the Motion Eye camera with the CyberCode sticker.

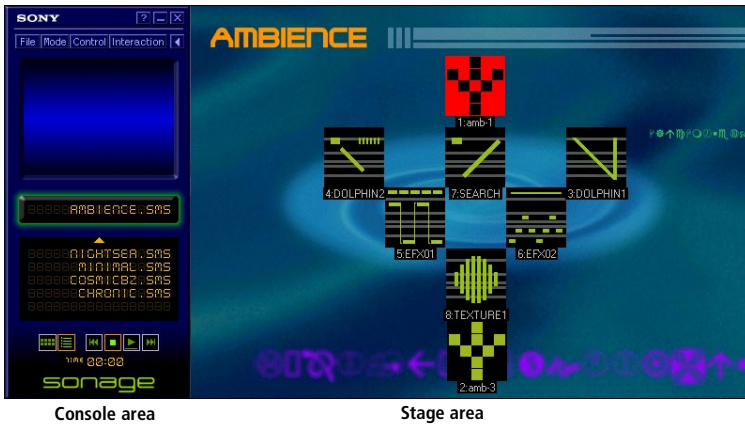
Playing Music Using Motion Eye and Sonage

You can play and remix the music generated with the movement of the image shot by the Motion Eye integrated camera. Refer to the Sonage help file for details.

To play the music

- 1 Click the Start button on the Windows 98 taskbar.
- 2 Point to VAIO, Imaging and Audio, then click Sonage.
- 3 Sonage starts and the console and stage areas will appear.
The console area displays the image shot by the Motion Eye camera;

the stage area displays icons called sound objects. The sound objects generate music following the movements of the image.



- 4 Click ► in the console area or Play from the Control menu.
- 5 The sound objects move and the music starts.

To compose music

- 1 Start Sonage.
- 2 Select Edit from the Mode menu.
The console area changes to the editing window.
- 3 Click Import.
Select a WAVE sound file in the Sample folder, then choose Open.
- 4 Arrange the sound object.
You can select settings from the menu in the console area.
- 5 Play the music.
Click ► in the console area or Play from the Control menu. To stop playback, click ■ in the console area or Stop from the Control menu.
- 6 Repeat steps 3 to 5 until you have finished.
- 7 Click Save from the File menu to save the composed music.
The music is saved in a file with an extension ".sms". You can play the music saved by clicking Open from the File menu.

Using Digital Media Park

Discovering Digital Media Park

Digital Media Park consists of three main components that work together to let you create an easy-to-use database to quickly locate and play any CD or file, or any individual CD track, in your library, using:

- ❑ Media Bar
- ❑ Media Library
- ❑ Media Showcase

Digital Media Park lets you:

- ❑ Play music CDs and sound files , play movies and videos on your computer screen from your CD-ROM or floppy drives or from files stored on your hard drive with Media Bar.
- ❑ Catalog and index your entire CD library, including both music and video CDs, by creating playlists, with Media Library and Media Showcase.
- ❑ Also, you can create custom packages that include tracks from several different CDs stored in one or more CD changers.

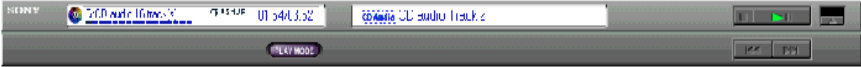
To start the Media Bar

- 1 Click the Windows 98 Start menu.
- 2 In the VAIO menu, select Digital Media Park, then Media Bar. The Player bar appears as a single control bar across the top of the screen, with buttons similar to the controls on a VCR or CD-player remote control.



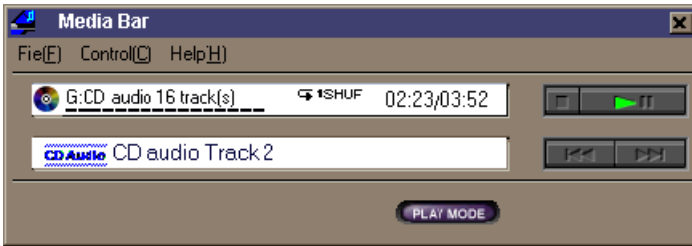
To expand the Media Bar

You can expand the bar to double-height to access more functions by clicking the Expand button (▼) at the far right. To return to single height, click the Restore button (▲).



To change the Player bar to a floating window

To change the bar into a floating window, drag the bar to the center of the screen. The bar opens into a window with File, Control, and Help menus.



Media Bar Functions

You can use the Media Bar to:

- Start and stop the playback of audio or video CDs or files.
- Navigate through files or selections on a CD.
- Pause and resume playback at the point where play left off.
- Set up automatic playback modes, including:
 - Repeat all of the selections in order.
 - Repeat a single selection.
 - Play all of the selections in a random order.

Video images display in a separate Movie window, which you can move and resize (to full screen). If the CD supports PlayBack Control (for example, Video CD-ROM format), you can select specific scenes or still images by their assigned numbers.



The Media Bar features extensive and detailed information in online help. To access online help, right-click the Player Bar and select Help from the shortcut menu.

Customizing Your Notebook Computer

You can customize the settings of your notebook computer. The following sections briefly describe how to change your computer's default settings. You can also refer to the Sony Notebook Setup Help for more detailed information.

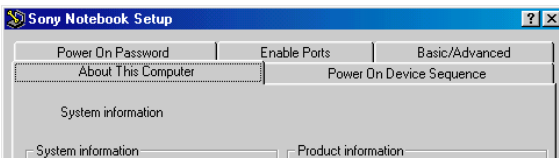
In addition, you can select the display modes via NeoMagic and enjoy the benefits of displaying your desktop on two screens.

- ❑ Sony Notebook Setup, page 35
- ❑ PowerPanel, page 36
- ❑ BatteryScope, page 39
- ❑ PPK Setup, page 41
- ❑ NeoMagic tab, page 43
- ❑ Dual Display function, page 45

Displaying the Sony Notebook Setup Screen

To display the Sony Notebook Setup screen:

- 1 Click the Start button on the Windows 98 taskbar.
- 2 Point to VAIO, then Assistance and click Sony Notebook Setup. The "Basic" window will appear; you can then enhance the features by clicking the "Advanced" tab.



- 3 Select the tab for the item you want to change. See "Notebook Setup Tabs" on page 35.
- 4 After you finish, click OK.

Notebook Setup Tabs

<i>Tab</i>	<i>Descriptions</i>
About This Computer	Display system information, including memory capacity, serial number, and BIOS version.
Power On Device Sequence	Select the order of drives and devices from which you want to load the operating system.
Power On Password	Set the password to secure your computer.
Enable Ports	Disabling ports releases resources to the system. To change the audio and infrared settings, click Advanced on the Basic/Advanced tab.
Basic/Advanced	Toggle between Advanced mode (additional screens with advanced settings) and Basic mode of display. Advanced mode includes Audio, infrared and View Resources tabs.



For more information about each option, click Help on the Sony Notebook Setup screen to display the help file.





PowerPanel

Controlling Power Management

The PowerPanel utility allows you to control the power management of your notebook computer and provides key information about system activity and battery life. The following sections briefly describe how to conserve your computer's battery power. You can also refer to the PowerPanel Help for more detailed information.


Power Management Profiles

PowerPanel provides several predefined power management profiles. Each profile consists of a group of specific power management settings that are designed to meet specific power management goals—ranging from maximum power management to no power management. You can change the settings for any of the predefined profiles or you can create your own profile to suit your portable computing needs. The predefined profiles are:

Icon	Description
	Camera – Provides the best system performance while using the built-in camera “Motion Eye”.
	Maximum Performance – Provides the best system performance while still conserving power.
	Maximum Battery Life – Provides power saving features to give you maximum battery life and good performance. It reduces the brightness of the display, slows the computer, and puts it into System Suspend mode after a specified time period.
	AC Profile – The power management state when AC power is in use. Similar to the Power Management Off setting. PowerPanel automatically loads the AC profile unless you disable this feature.

Other available profiles

Configure PowerPanel with some other profiles: right click on the Toolbar and choose Customize, then Add Profile:

	Power Management Off – Turns off all power management features such as System Suspend and System Hibernation modes.
---	--



Presentation – Keeps the display on at all times while it conserves power. This option is ideal for slide show presentations. You can establish settings for LCD (Video) Standby, Hard Disk Sleep, and System Suspend to optimize power management for your system.



Word Processing – Optimizes power management with longer timeouts on the hard disk and display screen. You can also establish settings for LCD (Video) Standby, Hard Disk Sleep, and System Suspend to optimize power management for your system.



Communications – Extends battery life by initiating a quick display timeout. You can also establish settings for LCD (Video) Standby, Hard Disk Sleep, and System Suspend to optimize power management for your system.

Power Management Commands

PowerPanel also provides power management commands that you can use to activate specific power management functions and to control power for a specific device. You might use these commands when you want to override a profile setting or initiate an immediate action, such as putting the system into Video Standby mode before the Video Standby timer expires.



System Suspend – Puts the system into System Suspend mode, a power management state that saves the state of the system and peripheral devices in memory (RAM). Power consumption reduces to a minimum, and the system remains on. To return the system to the active state, press any key or the power switch on your computer.



System Hibernation – Provides for the lowest level of power consumption. The system writes the state of the system and peripheral devices to the hard disk and turns off the system power. To return the system to the original state, use the power switch to turn on power. The system saves the data in the Save to Disk Partition on the hard drive.



LCD (Video) Standby – Turns off the LCD to save power. If you turn off the Video Standby timer, the display remains active except when the system enters System Suspend mode. The video display system is one of the largest consumers of power in the system.



Hard Disk Sleep – Turns off the hard disk spindle motor. Although you can manually turn off the power to the hard disk through this command, any system request to the hard disk turns on the power to the hard disk.



PC Card – Controls the PC card sockets. Click this button to open the PC Card (PCMCIA) Properties dialog box. You can view the properties for the PC cards.



Speed Controller - Controls the speed at which the CPU performs. Click this button to open the Speed Controller dialog box. When you select the Auto checkbox, the CPU performs at full speed while the system is active and at 25% of full speed during periods of inactivity. Auto is the recommended option. You can also choose to run the CPU at 100%, 75%, 50%, or 25% of full speed regardless of whether the system is active or inactive. Using this command can help conserve battery power.

To activate PowerPanel

- 1 Double-click the  (PowerPanel) icon on the taskbar.

The Profiles toolbar appears. When you move the pointer over the atom icon on the taskbar, a tooltip with the name of the active power management profile appears.



- 2 Click the button you want to set.

The power management settings associated with the profile you select become active.



To display the Commands toolbar, right-click an empty portion of the toolbar and select Commands from the context menu. Refer to the PowerPanel Help for information on customizing the PowerPanel toolbars.

Customizing PowerPanel

You can customize the PowerPanel toolbar to suit your portable computing needs. You can edit the pre-defined Power Management settings or create new profiles. Please refer to PowerPanel Help for more information.

Displaying Battery Information

You can display detailed information for the battery in your computer. The following sections briefly describe how to display your computer's general battery information. You can also refer to the BatteryScope Help for more detailed information.

Activating BatteryScope

To activate BatteryScope

- 1 Click the Start button on the Windows 98 taskbar or double click the battery icon.
- 2 Point to Sony Folder, then Assistance and click BatteryScope.

When you move the pointer over the battery icon on the taskbar, a tooltip appears indicating the total capacity remaining in the battery and the estimated time until the battery fully discharges.

You can also view battery gauges on the shared PowerPanel and BatteryScope toolbar.






Percentage indicator

Displays the percentage of the remaining capacity.

Time indicator

Displays estimated time (hours/minutes) remaining before the battery fully drains, also referred to as the time-to-empty.

Battery Icon Descriptions

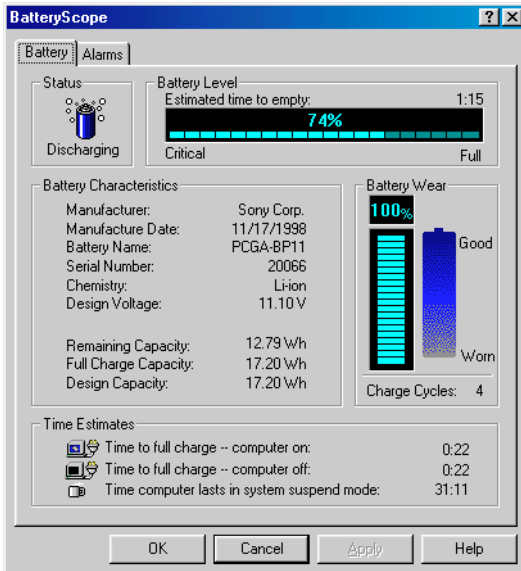
Battery icon	Battery status
	Discharging
	Charging
	No battery

Displaying Detailed Battery Information

You can obtain detailed information about the batteries.

- ❑ Click the battery icon on the toolbar to display the BatteryScope window.

The screen appears displaying the Battery tab, which contains information such as the estimated time-to-empty and the charging time.

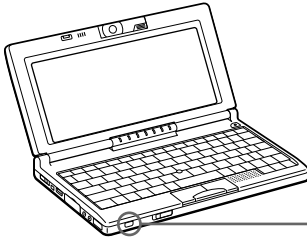


To customize the BatteryScope toolbar and alarm system

You can customize the BatteryScope toolbar to suit your portable computing needs, including modifications to the alarm settings. Refer to the BatteryScope Help for more information.

Starting Your Favourite Software with Programmable Power Key (PPK) Setup

The PPK Setup software enables you to start your favourite software by simply pressing the Programmable Power Key.

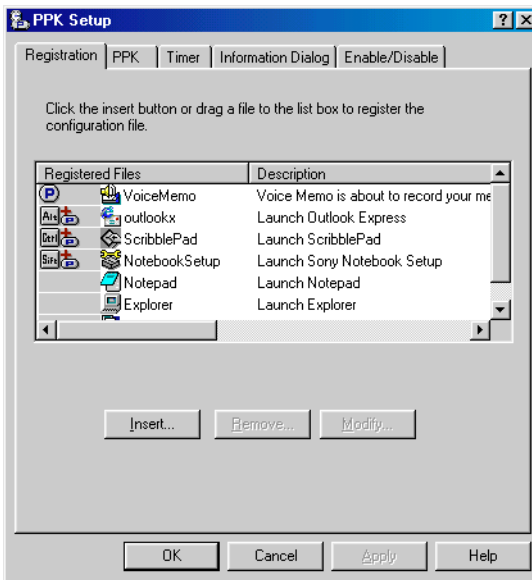



Programmable power key

This section briefly describes how to use the Programmable Power Key. You can also refer to the PPK Setup Help for more detailed information.

To use the PPK Setup screen:

- 1 Double-click the PPK Setup icon on the taskbar. The PPK Setup screen appears.



- 2 Select the software title you want PPK to launch automatically from the Registered Files list and right-click. The Setup options screen appears.
- 3 Click Set as PPK launch file. The  appears next to the selected software title.
- 4 Click OK.



The default settings for PPK do not allow you to start the selected software when the computer's LCD is closed. To start the selected software while the LCD is closed, click the Enable/Disable tab and select Enable PPK even if LCD Panel is closed. Be aware, however that the software can now start accidentally if you press the Programmable Power Key when you carry the computer.

Using the Programmable Power Key With Other Keys

You can also choose to start other applications by pressing the Programmable Power Key in combination with the Alt, Ctrl, or Shift keys.

To select the key combination, right-click the application you want to start and select an item from the menu. When you select Set as PPK launch file, you can turn on the power and start the selected application by just pressing the programmable power key. When you select Set as Alt+PPK launch file, Set as Ctrl+PPK launch file, or Set as Shift+PPK launch file, you need to turn on the computer to use these functions.

Using the internal timer:

You can use the internal timer to start software at a specific time. You can use this feature when the computer is in normal, system suspend mode.



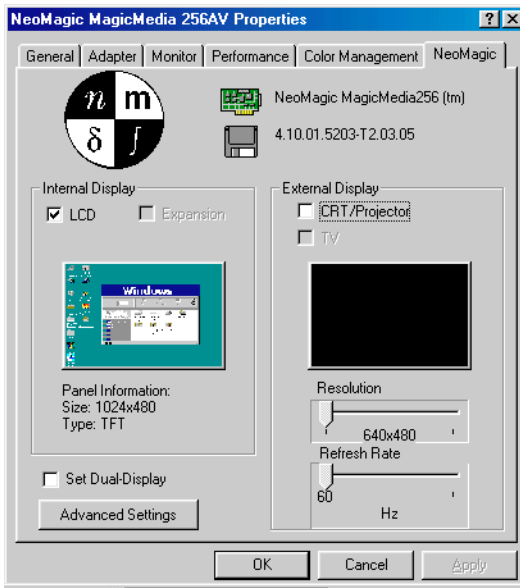
If the computer's LCD is closed, you cannot use the internal timer to start software using the default settings. To start software while the LCD is closed, click the Enable/Disable tab and select the checkbox next to Enable Timer launch even if LCD Panel is closed.

It may take some time to actually start the software. It is advised that you confirm the time your selected software takes to start.

Selecting the Display Mode

When you connect an external display, you can toggle the display mode between the LCD on your computer and an external display.

- 1 Click the Start button on the Windows 98 taskbar.
- 2 Point to Settings and click Control Panel.
- 3 Click Display.
- 4 Click the Settings tab.
- 5 Click the Advanced button.
- 6 Click the NeoMagic[®] tab.



- 7 Click Display Options.
- 8 Select the options under Display Mode:

<i>Display modes</i>	<i>Functions</i>
Monitor/LCD	Displays simultaneously both the LCD and an external display connected to the Monitor.

9 Click OK.

10 Click OK.



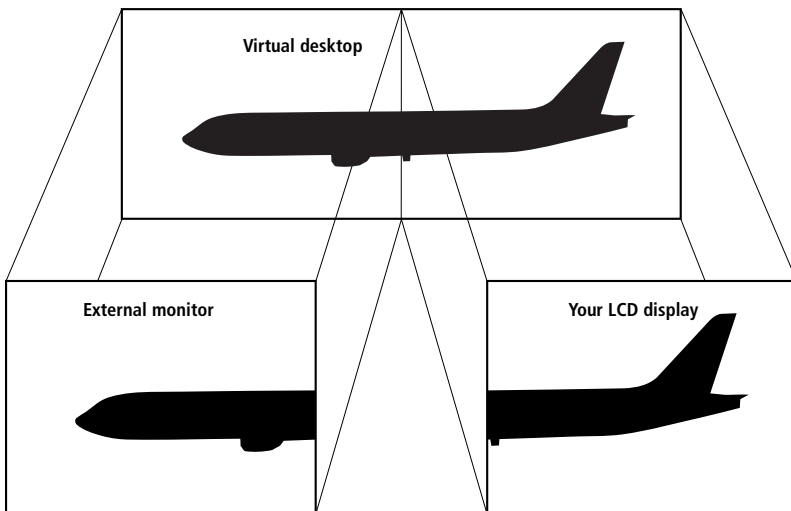
You can adjust the refresh rate when you select Monitor as the display mode.

Some displays do not support using both the computer's LCD and an external display simultaneously.

To use the Monitor and Monitor/LCD display modes, an external display must be connected to the monitor connector on the port replicator.

Using the Dual Display Function

The dual display function allows you to distribute portions of your desktop across separate displays. For example, if you have an external monitor attached to the monitor connector, your LCD display and the monitor can function as a single desktop. You can move the cursor off one display and onto the other. This allows you to drag objects, such as an open application window or a toolbar, from one display to the other. This configuration of a single desktop distributed across separate displays is referred to as a virtual desktop.



Selecting dual display mode

You must restart Windows to use dual display mode. Save your work and close any open applications before changing to dual display mode, then follow these steps:

- 1 Click the Start button on the Windows 98 taskbar.
- 2 Point to Settings and click Control Panel.
- 3 Click the Display icon.
- 4 Click the Settings tab.
- 5 Click the Advanced button.
- 6 Click the NeoMagic tab.

- 7 Check the Set Dual-Display option and click OK. The System Settings Change dialog box appears.
- 8 Click Yes to restart your system.
- 9 Repeat steps 1 to 3 to display the Display Properties screen.
- 10 Click the display icon number 2.
- 11 Click Yes.
- 12 Click OK.

Setting the colors and resolution for each display

You can set the display colours and resolution for each display that is part of a virtual desktop.

Follow steps 1 to 4 above to display the Display Properties screen. Select the display you wish to change (1 or 2) by clicking on the icon of the display. You can change colours by selecting an option from the Colours list. Use the slider in the Screen area to change the resolution. Click OK or Apply. Click OK to confirm that you want to make the changes.

Customizing the virtual desktop

You can customize dual display mode by changing the position of the two desktops that comprise the virtual desktop.

In the Display Properties screen, drag the icons of display 1 or display 2, moving them to a new position relative to each other. The two display icons must be connected to create a virtual desktop. Click OK to apply the change.

Releasing the dual display setting

You must restart Windows to return to single display mode. Save your work and close any open applications before returning to single display mode. Follow the steps in the section above on Selecting dual display mode. In step 7, remove the check from the Set Dual-Display option. You must restart Windows before the change takes effect.

