



Personālā audio sistēma Personāalne audio süsteem Asmeninē garso sistema

- LV BLUETOOTH® darbību sākšanas pamācība
- EE BLUETOOTH® lühijuhend
- LT BLUETOOTH® veiksmų pradėjimo instrukcija



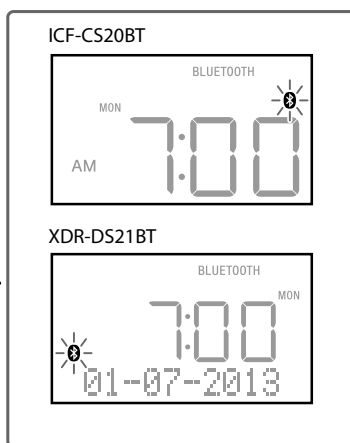
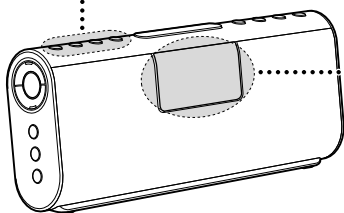
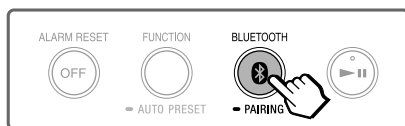
ICF-CS20BT/XDR-DS21BT

Ilustrācijās izmantots modelis ICF-CS20BT.
Ilustratsioonidel kasutatakse modelit ICF-CS20BT.
Iliustravimui yra panaudotas modelis ICF-CS20BT.

4-468-409-11(1)

©2013 Sony Corporation

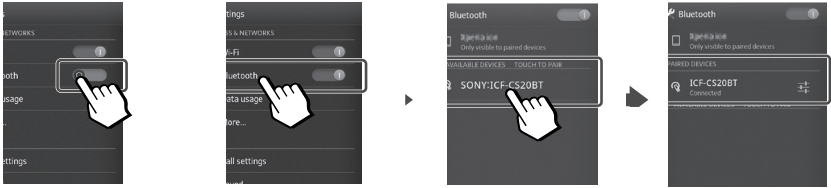
1



Piespiediet un turiet piespiestu, līdz dzirdami signāli un "📶" (BLUETOOTH) sāk ātri mirgot.
Vajutage ja holdke allavajutatult, kuni kõlavad signaalid ning "📶" (BLUETOOTH) hakkab kiiresti vilkuma.
Paspauskite ir laikykite paspausta, kad atskambētu garso signalas ir greitai pradėtų blyksėti 📶

2

Android



Viegli uzsietiet uz [Settings] [Bluetooth]

→ [Bluetooth]

Löoge õrnalt [Settings]

→ [Bluetooth]

Palieskite [Settings]

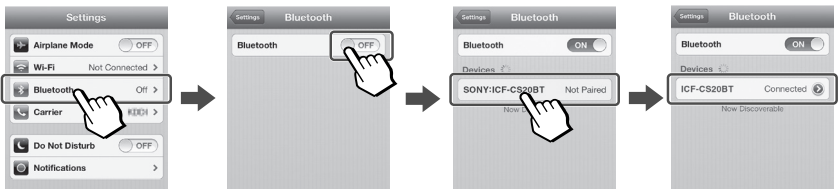
→ [Bluetooth]

[SONY: ICF-CS20BT]

vai / vöi / arba

[SONY: XDR-DS21BT]

iPhone



Viegli uzsietiet uz [Settings] OFF → ON

→ [Bluetooth]

Löoge õrnalt [Settings]

→ [Bluetooth]

Palieskite [Settings]

→ [Bluetooth]

[SONY: ICF-CS20BT]

vai / vöi / arba

[SONY: XDR-DS21BT]

3

