

FM/AM Радио с часовник

Ръководство за експлоатация



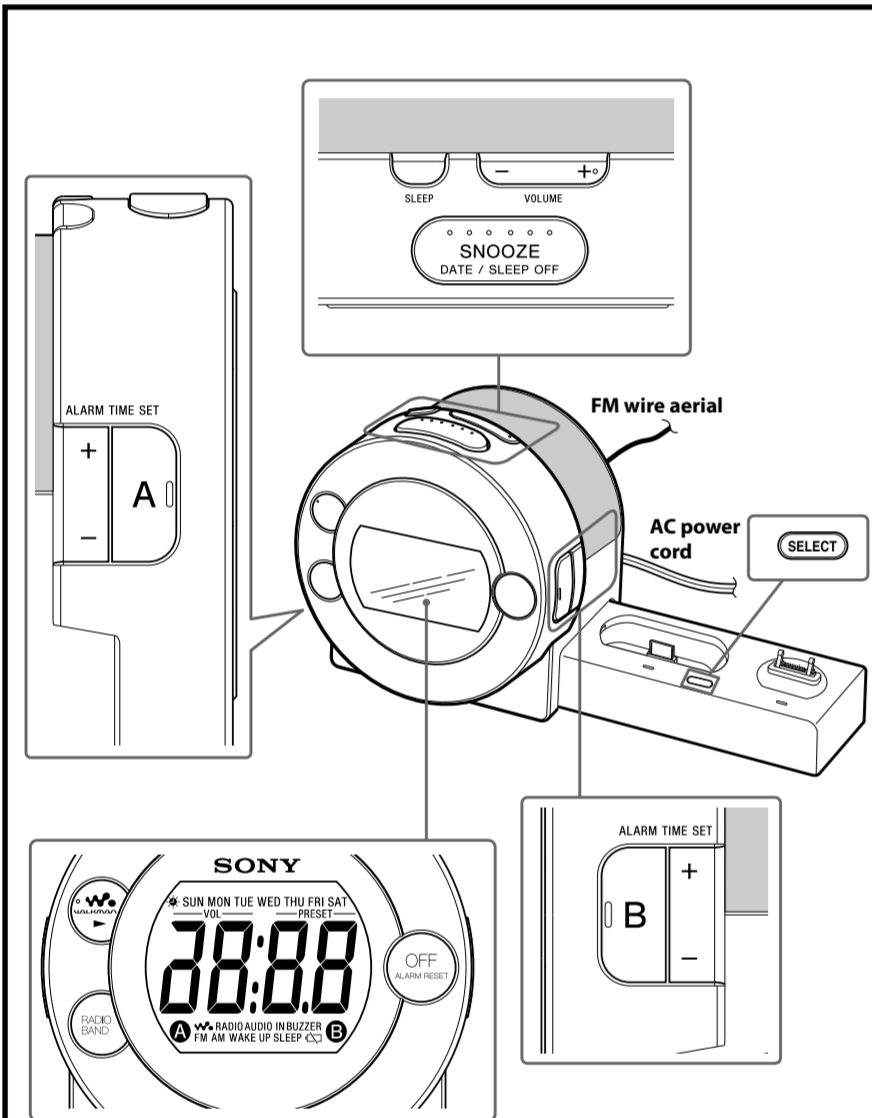
ICF-C8WM



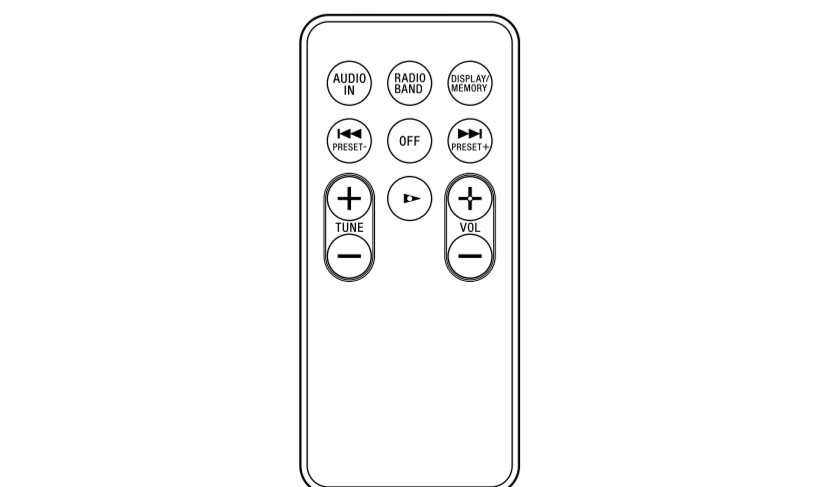
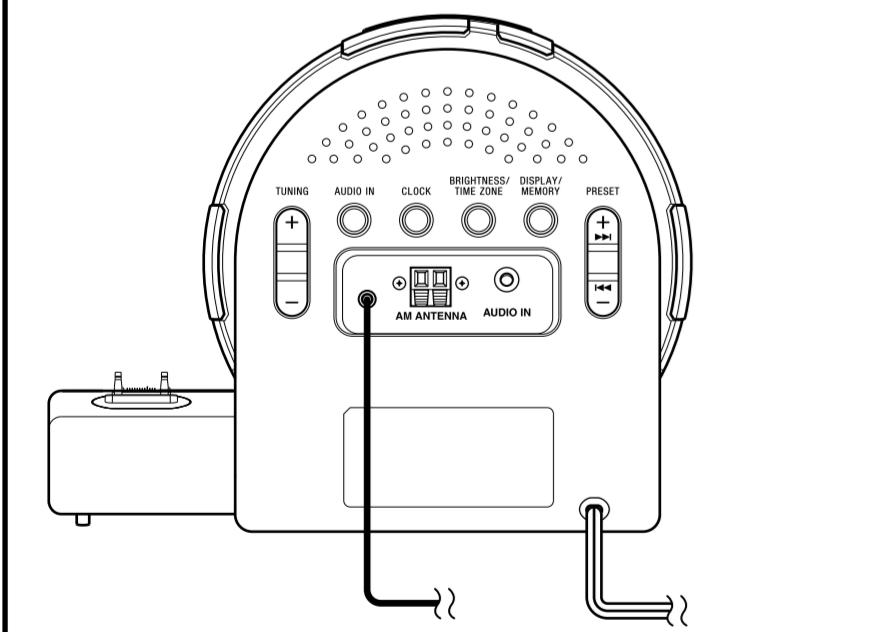
DREAM MACHINE

Dream Machine е запазна марка на Sony Corporation

©2009 Sony Corporation Отмечано в Чехия <http://www.sony.net/>



The **▶** (play) and **VOLUME +** buttons have a tactile dot. The **WALKMAN** mark in the display indicates that the "WALKMAN" or Sony Ericsson Phone function is activated.



The **▶** and **VOL +** buttons have a tactile dot.

English

WARNING

To reduce the risk of fire or electric shock, do not expose this apparatus to rain or moisture.

To reduce the risk of fire, do not cover the ventilation of the apparatus with newspapers, tablecloths, curtains, etc. And do not place lighted candles on the apparatus.

To reduce the risk of fire or electric shock, do not expose this apparatus to dripping or splashing, and do not place objects filled with liquids, such as vases, on the apparatus.

Do not install the appliance in a confined space, such as a bookcase or built-in cabinet.

Do not expose the batteries (battery pack or batteries installed) to excessive heat such as sunshine, fire or the like for a long time.

As the main plug is used to disconnect the unit from the mains, connect the unit to an easily accessible AC outlet. Should you notice an abnormality in the unit, disconnect the main plug from the AC outlet immediately.

The unit is not disconnected from the AC power source (mains) as long as it is connected to the wall outlet, even if the unit itself has been turned off.

CAUTION

Danger of explosion if battery is incorrectly replaced. Replace only with the same type.

Notice for customers: the following information is only applicable to equipment sold in countries applying EU directives

The manufacturer of this product is Sony Corporation, 1-7-1 Konan, Minato-ku, Tokyo, Japan. The Authorized Representative for EMC and product safety is Sony Deutschland GmbH, Heddlinger Strasse 61, 70327 Stuttgart, Germany. For any service or guarantee matters please refer to the addresses given in separate service or guarantee documents.

Precautions

- Operate the unit on the power source specified in "Specifications."
- To disconnect the AC power cord (mains lead), pull it out by the plug, not the cord.
- Since a strong magnet is used for the speaker, keep personal credit cards using magnetic coding or spring-wound watches away from the unit to prevent possible damage from the magnet.

- Do not leave the unit in a location near a heat source such as a radiator or air duct, or in a place subject to direct sunlight, excessive dust, mechanical vibration, or shock.
- Allow adequate air circulation to prevent internal heat build-up. Do not place the unit on a surface (e.g. a blanket, etc.) or near materials (a curtain) which might block the ventilation holes.

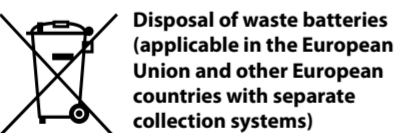
- Should any solid object or liquid fall into the unit, unplug the unit and have it checked by qualified personnel before operating it any further.
- To clean the casing, use a soft cloth dampened with a mild detergent solution.
- Never touch the wire of the external FM aerial during a thunderstorm. Furthermore, immediately disconnect the AC power cord from the radio.

- Wipe the battery with a dry cloth to assure a good contact.
- Be sure to observe the correct polarity when installing the battery.
- Do not touch the battery with metallic tweezers, otherwise a short-circuit may occur.



Disposal of Old Electrical & Electronic Equipment (Applicable in the European Union and other European countries with separate collection systems)

This symbol on the product or on its packaging indicates that this product shall not be treated as household waste. Instead it shall be handed over to the applicable collection point for the recycling of electrical and electronic equipment. By ensuring this product is disposed of correctly, you will help prevent potential negative consequences for the environment and human health, which could otherwise be caused by inappropriate waste handling of this product. The recycling of materials will help to conserve natural resources. For more detailed information about recycling of this product, please contact your local Civic Office, your household waste disposal service or the shop where you purchased the product. Applicable accessory: Remote Commander.



Disposal of waste batteries (applicable in the European Union and other European countries with separate collection systems)

This symbol on the battery or on the packaging indicates that the battery provided with this product shall not be treated as household waste. On certain batteries this symbol might be used in combination with a chemical symbol. The chemical symbols for mercury (Hg) or lead (Pb) are added if the battery contains more than 0.0005% mercury or 0.004% lead. By ensuring these batteries are disposed of correctly, you will help prevent potentially negative consequences for the environment and human health which could otherwise be caused by inappropriate waste handling of the battery. The recycling of the materials will help to conserve natural resources.

In case of products that for safety, performance or data integrity reasons require a permanent connection with an incorporated battery, this battery should be replaced by qualified service staff only. To ensure that the battery will be treated properly, hand over the product at end-of-life to the applicable collection point for the recycling of electrical and electronic equipment. For all other batteries, please view the section on how to remove the battery from the product safely. Hand the battery over to the applicable collection point for the recycling of waste batteries.

For more detailed information about recycling of this product or battery, please contact your local Civic Office, your household waste disposal service or the shop where you purchased the product.

If you have any questions or problems concerning your unit, please consult your nearest Sony dealer.

Features

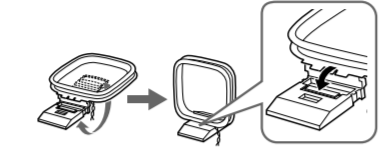
- Clock Radio with "WALKMAN" / Sony Ericsson Phone compatible
- Wake or Sleep to "WALKMAN" / Sony Ericsson Phone / Radio
- Easy to set A/B alarm
- 2.5-5.7 day alarm
- LCD Brightness control
- Wireless Remote commander

Connecting the aerial

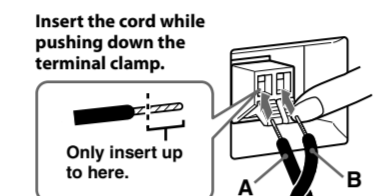
To connect the AM loop aerial

The shape and the length of the aerial is designed to receive AM signals. Do not dismantle or roll up the aerial.

- Remove only the loop part from the plastic stand.
- Set up the AM loop aerial.



- Connect the cords to the AM aerial terminals. Cord (A) or cord (B) can be connected to either terminal.



- Make sure the AM loop aerial is connected firmly by pulling softly.

Adjusting the AM loop aerial

Find a place and an orientation that provide good reception.

- Do not place the AM loop aerial near the unit or other AV equipment, as noise may result.

Tip

Adjust the direction of the AM loop aerial for best AM broadcast sound.

- Do not place the AM loop aerial near the unit or other AV equipment, as noise may result.

Adjust the direction of the AM loop aerial for best AM broadcast sound.

- Do not place the AM loop aerial near the unit or other AV equipment, as noise may result.

Adjust the direction of the AM loop aerial for best AM broadcast sound.

- Do not place the AM loop aerial near the unit or other AV equipment, as noise may result.

Adjust the direction of the AM loop aerial for best AM broadcast sound.

- Do not place the AM loop aerial near the unit or other AV equipment, as noise may result.

Adjust the direction of the AM loop aerial for best AM broadcast sound.

- Do not place the AM loop aerial near the unit or other AV equipment, as noise may result.

Adjust the direction of the AM loop aerial for best AM broadcast sound.

- Do not place the AM loop aerial near the unit or other AV equipment, as noise may result.

Adjust the direction of the AM loop aerial for best AM broadcast sound.

- Do not place the AM loop aerial near the unit or other AV equipment, as noise may result.

Adjust the direction of the AM loop aerial for best AM broadcast sound.

- Do not place the AM loop aerial near the unit or other AV equipment, as noise may result.

Adjust the direction of the AM loop aerial for best AM broadcast sound.

- Do not place the AM loop aerial near the unit or other AV equipment, as noise may result.

Adjust the direction of the AM loop aerial for best AM broadcast sound.

- Do not place the AM loop aerial near the unit or other AV equipment, as noise may result.

Adjust the direction of the AM loop aerial for best AM broadcast sound.

- Do not place the AM loop aerial near the unit or other AV equipment, as noise may result.

Adjust the direction of the AM loop aerial for best AM broadcast sound.

- Do not place the AM loop aerial near the unit or other AV equipment, as noise may result.

Adjust the direction of the AM loop aerial for best AM broadcast sound.

- Do not place the AM loop aerial near the unit or other AV equipment, as noise may result.

Adjust the direction of the AM loop aerial for best AM broadcast sound.

- Do not place the AM loop aerial near the unit or other AV equipment, as noise may result.

Adjust the direction of the AM loop aerial for best AM broadcast sound.

- Do not place the AM loop aerial near the unit or other AV equipment, as noise may result.

Adjust the direction of the AM loop aerial for best AM broadcast sound.

- Do not place the AM loop aerial near the unit or other AV equipment, as noise may result.

Adjust the direction of the AM loop aerial for best AM broadcast sound.

- Do not place the AM loop aerial near the unit or other AV equipment, as noise may result.

Adjust the direction of the AM loop aerial for best AM broadcast sound.

- Do not place the AM loop aerial near the unit or other AV equipment, as noise may result.

Adjust the direction of the AM loop aerial for best AM broadcast sound.

- Do not place the AM loop aerial near the unit or other AV equipment, as noise may result.

Adjust the direction of the AM loop aerial for best AM broadcast sound.

- Do not place the AM loop aerial near the unit or other AV equipment, as noise may result.

Adjust the direction of the AM loop aerial for best AM broadcast sound.

- Do not place the AM loop aerial near the unit or other AV equipment, as noise may result.

Adjust the direction of the AM loop aerial for best AM broadcast sound.

- Do not place the AM loop aerial near the unit or other AV equipment, as noise may result.

Adjust the direction of the AM loop aerial for best AM broadcast sound.

- Do not place the AM loop aerial near the unit or other AV equipment, as noise may result.

Adjust the direction of the AM loop aerial for best AM broadcast sound.

- Do not place the AM loop aerial near the unit or other AV equipment, as noise may result.

Adjust the direction of the AM loop aerial for best AM broadcast sound.

- Do not place the AM loop aerial near the unit or other AV equipment, as noise may result.

Adjust the direction of the AM loop aerial for best AM broadcast sound.

- Do not place the AM loop aerial near the unit or other AV equipment, as noise may result.

Adjust the direction of the AM loop aerial for best AM broadcast sound.

- Do not place the AM loop aerial near the unit or other AV equipment, as noise may result.

Adjust the direction of the AM loop aerial for best AM broadcast sound.

- Do not place the AM loop aerial near the unit or other AV equipment, as noise may result.

Adjust the direction of the AM loop aerial for best AM broadcast sound.

- Do not place the AM loop aerial near the unit or other AV equipment, as noise may result.

Adjust the direction of the AM loop aerial for best AM broadcast sound.

- Do not place the AM loop aerial near the unit or other AV equipment, as noise may result.

Adjust the direction of the AM loop aerial for best AM broadcast sound.

- Do not place the AM loop aerial near the unit or other AV equipment, as noise may result.

Adjust the direction of the AM loop aerial for best AM broadcast sound.

- Do not place the AM loop aerial near the unit or other AV equipment, as noise may result.

Adjust the direction of the AM loop aerial for best AM broadcast sound.

- Do not place the AM loop aerial near the unit or other AV equipment, as noise may result.

Adjust the direction of the AM loop aerial for best AM broadcast sound.

- Do not place the AM loop aerial near the unit or other AV equipment, as noise may result.

Adjust the direction of the AM loop aerial for best AM broadcast sound.

- Do not place the AM loop aerial near the unit or other AV equipment, as noise may result.

Adjust the direction of the AM loop aerial for best AM broadcast sound.

- Do not place the AM loop aerial near the unit or other AV equipment, as noise may result.

Adjust the direction of the AM loop aerial for best AM broadcast sound.

- Do not place the AM loop aerial near the unit or other AV equipment, as noise may result.

Adjust the direction of the AM loop aerial for best AM broadcast sound.

- Do not place the AM loop aerial near the unit or other AV equipment, as noise may result.

Adjust the direction of the AM loop aerial for best AM broadcast sound.

- Do not place the AM loop aerial near the unit or other AV equipment, as noise may result.

Adjust the direction of the AM loop aerial for best AM broadcast sound.

- Do not place the AM loop aerial near the unit or other AV equipment, as noise may result.

Adjust the direction of the AM loop aerial for best AM broadcast sound.

- Do not place the AM loop aerial near the unit or other AV equipment, as noise may result.

Adjust the direction of the AM loop aerial for best AM broadcast sound.

- Do not place the AM loop aerial near the unit or other AV equipment, as noise may result.

Adjust the direction of the AM loop aerial for best AM broadcast sound.

- Do not place the AM loop aerial near the unit or other AV equipment, as noise may result.

Adjust the direction of the AM loop aerial for best AM broadcast sound.

- Do not place the AM loop aerial near the unit or other AV equipment, as noise may result.

Adjust the direction of the AM loop aerial for best AM broadcast sound.

- Do not place the AM loop aerial near the unit or other AV equipment, as noise may result.

Adjust the direction of the AM loop aerial for best AM broadcast sound.

- Do not place the AM loop aerial near the unit or other AV equipment, as noise may result.

Adjust the direction of the AM loop aerial for best AM broadcast sound.

- Do not place the AM loop aerial near the unit or other AV equipment, as noise may result.

Adjust the direction of the AM loop aerial for best AM broadcast sound.

- Do not place the AM loop aerial near the unit or other AV equipment, as noise may result.

Adjust the direction of the AM loop aerial for best AM broadcast sound.

- Do not place the AM loop aerial near the unit or other AV equipment, as noise may result.

Adjust the direction of the AM loop aerial for best AM broadcast sound.

- Do not place the AM loop aerial near the unit or other AV equipment, as noise may result.

Adjust the direction of the AM loop aerial for best AM broadcast sound.

- Do not place the AM loop aerial near the unit or other AV equipment, as noise may result.

Adjust the direction of the AM loop aerial for best AM broadcast sound.

- Do not place the AM loop aerial near the unit or other AV equipment, as noise may result.

Adjust the direction of the AM loop aerial for best AM broadcast sound.

- Do not place the AM loop aerial near the unit or other AV equipment, as noise may result.

Adjust the direction of the AM loop aerial for best AM broadcast sound.

- Do not place the AM loop aerial near the unit or other AV equipment, as noise may result.

Adjust the direction of the AM loop aerial for best AM broadcast sound.

- Do not place the AM loop aerial near the unit or other AV equipment, as noise may result.

Adjust the direction of the AM loop aerial for best AM broadcast sound.

- Do not place the AM loop aerial near the unit or other AV equipment, as noise may result.

Adjust the direction of the AM loop aerial for best AM broadcast sound.

- Do not place the AM loop aerial near the unit or other AV equipment, as noise may result.

Adjust the direction of the AM loop aerial for best AM broadcast sound.

- Do not place the AM loop aerial near the unit or other AV equipment, as noise may result.

Adjust the direction of the AM loop aerial for best AM broadcast sound.

- Do not place the AM loop aerial near the unit or other AV equipment, as noise may result.

Adjust the direction of the AM loop aerial for best AM broadcast sound.

- Do not place the AM loop aerial near the unit or other AV equipment, as noise may result.

Adjust the direction of the AM loop aerial for best AM broadcast sound.

- Do not place the AM loop aerial near the unit or other AV equipment, as noise may result.

Adjust the direction of the AM loop aerial for best AM broadcast sound.

- Do not place the AM loop aerial near the unit or other AV equipment, as noise may result.

Adjust the direction of the AM loop aerial for best AM broadcast sound.

- Do not place the AM loop aerial near the unit or other AV equipment, as noise may result.

Adjust the direction of the AM loop aerial for best AM broadcast sound.

- Do not place the AM loop aerial near the unit or other AV equipment, as noise may result.

Adjust the direction of the AM loop aerial for best AM broadcast sound.

- Do not place the AM loop aerial near the unit or other AV equipment, as noise may result.

Adjust the direction of the AM loop aerial for best AM broadcast sound.

- Do not place the AM loop aerial near the unit or other AV equipment, as noise may result.

Adjust the direction of the AM loop aerial for best AM broadcast sound.

- Do not place the AM loop aerial near the unit or other AV equipment, as noise may result.

Adjust the direction of the AM loop aerial for best AM broadcast sound.

- Do not place the AM loop aerial near the unit or other AV equipment, as noise may result.

Adjust the direction of the AM loop aerial for best AM broadcast sound.

- Do not place the AM loop aerial near the unit or other AV equipment, as noise may result.

Adjust the direction of the AM loop aerial for best AM broadcast sound.

- Do not place the AM loop aerial near the unit or other AV equipment, as noise may result.

Adjust the direction of the AM loop aerial for best AM broadcast sound.

- Do not place the AM loop aerial near the unit or other AV equipment, as noise may result.

Adjust the direction of the AM loop aerial for best AM broadcast sound.

- Do not place the AM loop aerial near the unit or other AV equipment, as noise may result.

Adjust the direction of the AM loop aerial for best AM broadcast sound.

- Do not place the AM loop aerial near the unit or other AV equipment, as noise may result.

Adjust the direction of the AM loop aerial for best AM broadcast sound.

- Do not place the AM loop aerial near the unit or other AV equipment, as noise may result.

Adjust the direction of the AM loop aerial for best AM broadcast sound.

