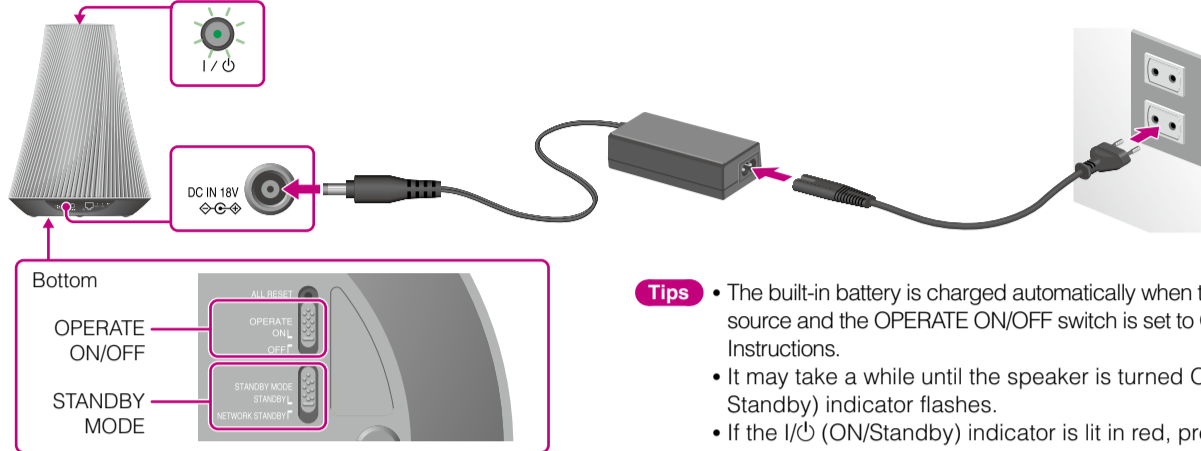


# Quick Start Guide

## 1 Turn on Your Speaker

Set the OPERATE ON/OFF switch to ON. The I/⏻ (ON/Standby) indicator will light up in green.



Set the STANDBY MODE switch to NETWORK STANDBY if you want to use the speaker via a home network.

\* The shapes of AC outlets and plugs differ by region.

- Tips**
- The built-in battery is charged automatically when the unit is connected to an AC power source and the OPERATE ON/OFF switch is set to ON. For details, see the supplied Operating Instructions.
  - It may take a while until the speaker is turned ON. During starting-up, the I/⏻ (ON/Standby) indicator flashes.
  - If the I/⏻ (ON/Standby) indicator is lit in red, press the I/⏻ (ON/Standby) button.

Keep the SSID (Wireless Network Name) and Security Key (WEP, WPA key or password) for your wireless network handy.

## 2 Set up Your Speaker (Wireless network connection)

Which device would you like to use to set up the speaker?

iPhone/iPod touch/iPad

Android device

Windows PC

Mac

- 1 Download the "NS Setup" application and launch it.

Download the free application here:



When setting up with an iPhone/iPod touch/iPad  
Go to [Settings] - [Wi-Fi Networks] and select [Sony\_Wireless\_Audio\_Setup].  
If "Sony\_Wireless\_Audio\_Setup" does not appear, wait until the speaker finishes turning on.  
If it still does not appear, reset the speaker (see the reverse side).

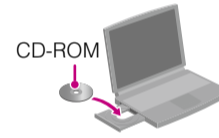
- 2 Follow the on-screen instructions.

When setup is completed, press the "Play test sound" button to confirm operation of the speaker by playing the test sound.

**Note** Wireless LAN is required when setting up the speaker.

- 1 Load the supplied CD-ROM into the CD-ROM drive of your PC.

If the program does not start automatically, double-click on "NS\_Setup.exe" on the CD-ROM.



- 2 Follow the on-screen instructions.

When setup is completed, press the "Play test sound" button to confirm operation of the speaker by playing the test sound.

- 1 See "Option 3: Manual setting method using an Access Point Scan (for PC/Mac)" in the supplied Operating Instructions.

Setup completed!

**Setup is required only once for each speaker.**

No matter which device you use to set up the speaker, you can enjoy all features of Network Speaker and control playback from other devices in the same network.

## 3 Play Music!

What would you like to listen to?

Music on an iPhone/iPod touch/iPad

Internet music streaming using an Android device/iPhone/iPod touch/iPad

Music on a Windows PC (including iTunes music)

iTunes music on a Mac

- 1 Launch "Music" application.
- 2 Tap and select [SA-NS510].

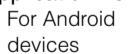
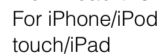
iPhone, iPod touch or iPad



- 1 Download the "Network Audio Remote" application and launch it.



Download the free application here:



- 2 Select the desired Internet music streaming.

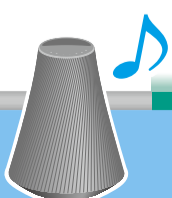
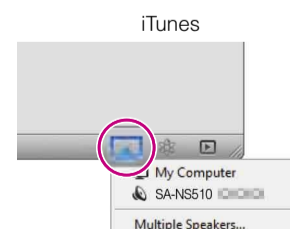
e.g. Music Unlimited  
[Music Services] - [Music Unlimited]  
- [Genre]

**When using Windows Media Player**

See "Listening to Audio Content Over Your Home Network" in the supplied Operating Instructions.

**When using iTunes**

- 1 Launch "iTunes" application.
- 2 Click and select [SA-NS510].



That's it!

To make full use of the speaker, see the reverse side.  
For more details, see the following website: <http://www.sony.net/sans>

# What can be done with your device and this Network Speaker

You can set up the Network Speaker using any of the following devices:

## iPhone/iPod touch/iPad or Mac

- Using AirPlay to send music
- Using iTunes to play music
- Accessing the Internet music streaming such as Music Unlimited
- Using your iPhone/iPod touch/iPad instead of the remote control

## Android phone or tablet

- Accessing the Internet music streaming such as Music Unlimited
- Controlling music playback with your Android device
- Using your Android device instead of the remote control

## Windows PC

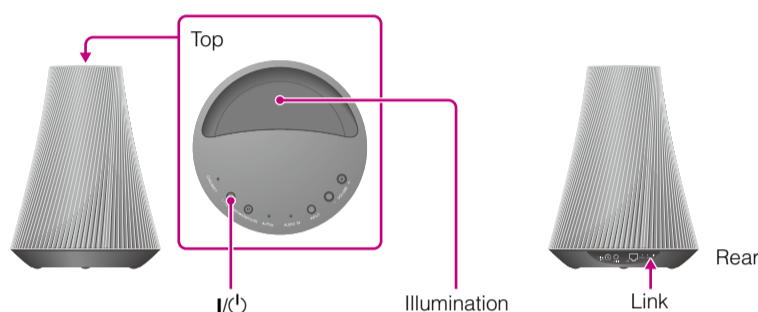
- Playing your music stored on a PC with your Network Speaker

### If the OS of your PC is Windows 7

- Using your PC as both server and controller (and the [Play To] function arrows you to listen to music easily)

For more information and instructions, visit <http://www.sony.net/sans>

## Indicator information



Indicator	White	Blue	None
Illumination	<ul style="list-style-type: none"> <li><b>Lit:</b> <ul style="list-style-type: none"> <li>- In Playback mode</li> <li>- In selecting audio input</li> </ul> </li> <li><b>Cycle of flashing at 1 sec:</b> <ul style="list-style-type: none"> <li>In preparation for playback</li> </ul> </li> <li><b>Cycle of flashing twice in 1 sec:</b> <ul style="list-style-type: none"> <li>In pause mode</li> </ul> </li> <li><b>Cycle of flashing 4 times in 1 sec:</b> <ul style="list-style-type: none"> <li>An error has occurred</li> </ul> </li> </ul>	<ul style="list-style-type: none"> <li><b>Lit:</b> <ul style="list-style-type: none"> <li>In stopped Playback mode</li> </ul> </li> <li><b>Cycle of flashing at 1 sec:</b> <ul style="list-style-type: none"> <li>During muting</li> </ul> </li> <li><b>Cycle of flashing twice in 1 sec:</b> <ul style="list-style-type: none"> <li>During transition to Standby mode</li> </ul> </li> </ul>	<ul style="list-style-type: none"> <li><b>Lit:</b> <ul style="list-style-type: none"> <li>- In Standby mode</li> <li>- During updating</li> <li>- OPERATE ON/OFF switch is set to OFF</li> <li>- Drained battery condition</li> </ul> </li> </ul>

Flashing: During starting-up

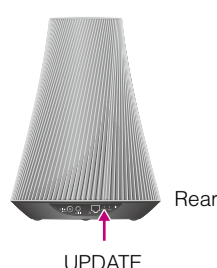
Indicator	Green	Amber	Red	None
I/ON (ON/Standby)	<ul style="list-style-type: none"> <li><b>Lit:</b> <ul style="list-style-type: none"> <li>In operation</li> </ul> </li> <li><b>Flashing:</b> <ul style="list-style-type: none"> <li>During starting-up</li> </ul> </li> </ul>	<ul style="list-style-type: none"> <li><b>Lit:</b> <ul style="list-style-type: none"> <li>In network standby mode</li> </ul> </li> </ul>	<ul style="list-style-type: none"> <li><b>Lit:</b> <ul style="list-style-type: none"> <li>In standby mode</li> </ul> </li> <li><b>Flashing:</b> <ul style="list-style-type: none"> <li>In protection mode</li> </ul> </li> </ul>	<ul style="list-style-type: none"> <li><b>Lit:</b> <ul style="list-style-type: none"> <li>- OPERATE ON/OFF switch is set to OFF</li> <li>- Drained battery condition</li> </ul> </li> </ul>

Press I/ON (ON/Standby) button or set the OPERATE ON/OFF switch to OFF, then set it to ON again. If the symptom recurs, consult your nearest Sony dealer.

Indicator	Green	Amber	Red	None
LINK	<ul style="list-style-type: none"> <li><b>Lit:</b> <ul style="list-style-type: none"> <li>During wireless connection</li> </ul> </li> <li><b>Cycle of flashing for 2 sec and dark for 1 sec:</b> <ul style="list-style-type: none"> <li>Begins wireless connection</li> </ul> </li> </ul>	<ul style="list-style-type: none"> <li><b>Lit:</b> <ul style="list-style-type: none"> <li>During wired connection</li> </ul> </li> <li><b>Cycle of being lit for 2 sec and dark for 1 sec:</b> <ul style="list-style-type: none"> <li>Begins wired connection</li> </ul> </li> </ul>	<ul style="list-style-type: none"> <li><b>Lit:</b> <ul style="list-style-type: none"> <li>An error has occurred (with the wireless LAN setting/ not connected)</li> </ul> </li> <li><b>Cycle of flashing 4 times in 1 sec:</b> <ul style="list-style-type: none"> <li>A wireless LAN WPS error has occurred</li> </ul> </li> </ul>	<ul style="list-style-type: none"> <li><b>Lit:</b> <ul style="list-style-type: none"> <li>A wireless network setting process is not finished</li> </ul> </li> </ul>

### To update the software

When a new update is available, the UPDATE indicator is lit in green while the unit is connected to the Internet. Press and hold the UPDATE button until the illumination is turned off.



### To reset the speaker

The previously registered settings or information can be reset. Press the ALL RESET button on the bottom of the unit with a pointed object (such as a small pin) until all indicators light.

