


Network Function Operating Instructions



On trademarks

- “Memory Stick” and  are registered trademarks of Sony Corporation.
- The BLUETOOTH trademarks are owned by their proprietor and used by Sony Corporation under license.
- NetFront by Access Co., Ltd. is adopted for the Internet function of this product. NetFront is a registered trademark of Access Co., Ltd in Japan.
Copyright © 1996 – 2002 ACCESS CO., LTD.
- Portions of the supplied software are based partially on the work of the Independent JPEG Group.

All other product names mentioned herein may be the trademarks or registered trademarks of their respective companies. Furthermore, “™” and “®” are not mentioned in each case in this manual.

No compensation for your recordings

Any recording contents or downloaded files cannot be compensated for being lost due to redording/playback malfunction or storage media problems.

Precautions

- Before using the network function, make sure to set the clock on the camcorder. For details, refer to the operating instructions of the camcorder. If you use the network function without setting the clock, you may not be able to send/receive e-mail or view a web page.
- Do not remove the battery pack or disconnect the AC power adaptor while operating in NETWORK mode. The setup for the NETWORK mode may be lost. Also, exit the NETWORK mode when setting the POWER switch to OFF (CHG) or switching the mode. These are to prevent the NETWORK mode setup from being lost.
- It is recommended that you make backup copies of your email messages and your network preferences. These may be lost from time to time due to memory corruption. To save the network preferences, write them down on paper, or use “Setup memo,” described (p. 106). Also, this data may be lost when the camcorder is repaired by services.
- The reset button cannot reset the network preferences.

Note on network operation when using the battery pack

When the remaining battery time is insufficient in NETWORK mode, use the AC power adaptor or replace the battery pack with a fully charged battery pack. Before connecting the AC power adaptor or replacing the battery pack, be sure to exit the NETWORK mode.

Note on the network function

The network function is only available in the following countries or areas: Austria, Belgium, Denmark, Finland, France, Germany, Greece, Ireland, Luxembourg, Netherlands, Norway, Portugal, Sweden, Switzerland, United Kingdom, and Spain. (As investigated by Sony Corporation on 1. 8. 2001)

When using the camcorder in a country or area not described above, the network function is available only in the country or area where you purchased the camcorder.

Table of contents

Introduction

The network function on the camcorder ...	4
Basic operations in the NETWORK mode	6
How to use the Network Menu	6
How to hold your camcorder when operating in the NETWORK mode	7
How to use the stylus	8
How to input characters	9
Character input display	11
The available characters list	12
Character input setting	17

Preparation

Using the NETWORK functions	18
Overview of the Bluetooth wireless technology	19
Registering a Bluetooth device	20
Using your Modem Adaptor with Bluetooth Function	20
When the registration has failed	24
Displaying information on your camcorder	24
Radio wave indication	26
Selecting other Bluetooth devices from the list	26
Deleting a registered Bluetooth device from the list	26
Customer registration	28
DI customer registration	28
About the Login name (ID) and password	28
Registration for Album on the Web	29
Internet service provider	30
Registration for "So-net"	31
Setting network preferences	32
Entering your Login name (ID) and password	32
Setting your provider preferences ...	34

Network Operation

Making your Album on the Web	43
Uploading images to your Album on the Web	43
Viewing or editing your Album on the Web	50
Deleting images from your album ...	55
Finishing viewing or editing the album	55

Using email	56
Sending email	56
Using the address book	67
Receiving email	73
Deleting unnecessary email	78
Viewing web pages	80
Viewing web pages	80
How to use the menu bar on the browser	82
Storing the web page into a "Memory Stick" – Page Memo ..	88
Shutting down the browser	93

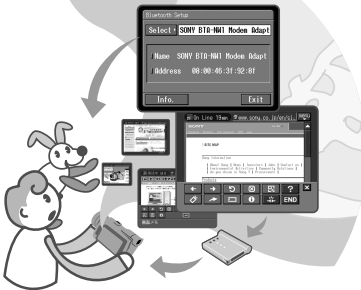
Additional Information

File storage destinations and file names	94
Troubleshooting	95
Trouble accessing the Internet	95
Trouble with email	96
Trouble viewing web pages	97
Troubles about the Album on the Web	98
Adjusting the LCD screen (CALIBRATION)	98
Specifications	99
Messages	100
General	100
Album on the Web	101
Email	101
Browser	102
Album error codes	103
Glossary	104
Setup memo	106

The network function on the camcorder

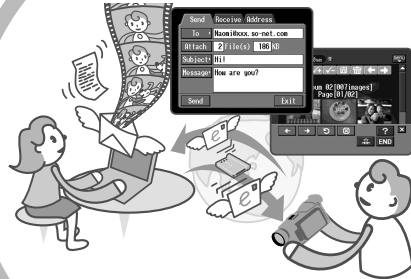
Congratulations on your purchase of this Sony Handycam. This Handycam can access to the Internet through your provider using a dial-up networking connection with a Bluetooth device. You can view web pages, receive email, and send email with images recorded on your camcorder attached. "Album on the Web" is your own private Internet-based photo album. The communication system is Bluetooth Ver.1.1 and its compatible Bluetooth profiles are the "Generic Access Profile" and the "Dial-up Networking Profiles".

Easy access to the Internet



You can view a web page via the Internet.

Send/receive your emails



You can send or receive email anytime, and attach images to email messages.

Making your album on the Web



You can upload images to your album, and view or edit your album.

Easy network preferences (So-net)



Using the “So-net” option, you can easily set the required Internet and email preferences. For details on “So-net,” see “Using the recommended provider (So-net)” (p. 30), or the supplied leaflet “Start Here!”.

Set the camcorder’s clock setting before using the Network functions. (The default setting is OFF.)

If you do not set the clock setting, you cannot send and receive emails or view web pages.

You also have to set up your camcorder and the peripheral device, and complete required registrations (DI customer registration, etc.).

For more information, see the supplied leaflet “Start Here!”.

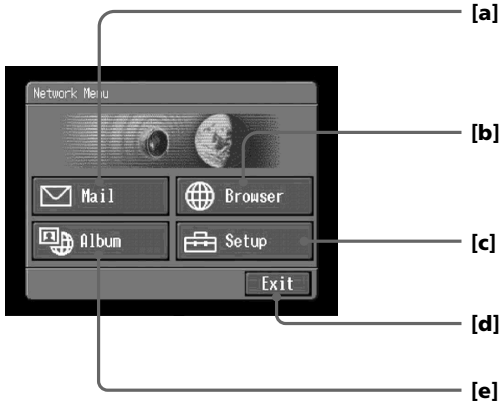
“DI” in “DI customer registration” stands for “Digital Imaging”.

Basic operations in the NETWORK mode

This section describes basic control ways to operate your camcorder, those which are used for network operations.

How to use the Network Menu

To access the Network Menu, refer to “Accessing the network” in the operating instructions supplied with your camcorder.



[a]: Send and receive email. For details, see “Using email” (p. 56).

[b]: View a web page through the Internet. For details, see “Viewing web pages” (p. 80).

[c]: You have to make various settings using this menu before using the network function. For details, see “Setting network preferences” (p. 32).

[d]: Exit the NETWORK mode.

[e]: Upload images to your Album on the Web and post the images on the Internet. For details, see “Making your Album on the Web” (p. 43).

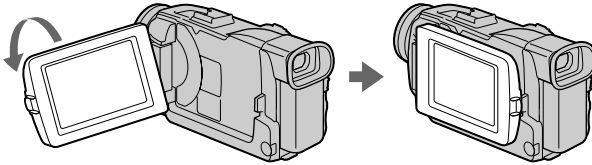
The actual screens may differ slightly from the illustrations in this network function operating instructions.

Basic operations in the NETWORK mode

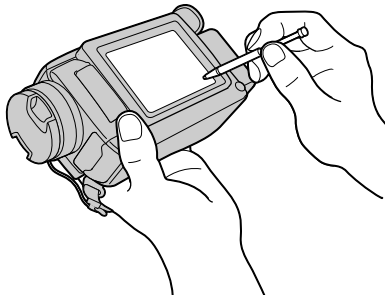
How to hold your camcorder when operating in the NETWORK mode

When operating in the NETWORK mode, you can turn the LCD panel over and move it back to your camcorder with the LCD screen facing over to use the stylus (for touch panel operation, supplied).

- 1 Turn the LCD panel over and move it back to your camcorder with the LCD screen facing over.



- 2 Hold your camcorder as illustrated below.



The way to hold and operate your camcorder varies depending on the model. For detail, refer to the "Operating Instructions" supplied with your camcorder.

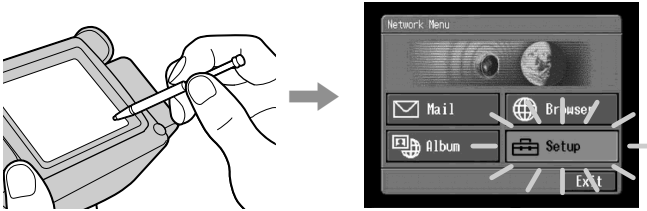
Basic operations in the NETWORK mode

How to use the stylus

The buttons required for operating your camcorder are displayed on the LCD screen. Operate by pressing the buttons on the screen directly but lightly with the stylus provided. In this manual, pressing the buttons in this way using the stylus is referred to as "tapping".

Tap the desired button on the screen with the stylus.

The selected button turns orange.



Notes

- Do not tap them with sharp-pointed objects other than the stylus supplied.
- Do not tap the LCD screen too hard.
- Do not touch the LCD screen with wet hands.
- When the LCD screen gets dirty, use the supplied cleaning cloth.
- You cannot drag icons, like on a computer, by touching and sliding across your camcorder screen with the stylus.



- Refer to the operating instructions supplied with your camcorder for the stylus storage location. To avoid losing the stylus, we recommend that you return it to the storage location after use.

Basic operations in the NETWORK mode

How to input characters

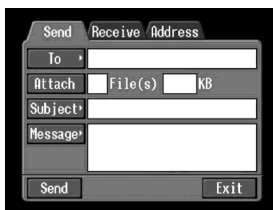
You have to frequently enter characters, such as email addresses, or web pages addresses (URL), to use the network function. This section describes how to input characters.

1 (1) Open the Network Menu.

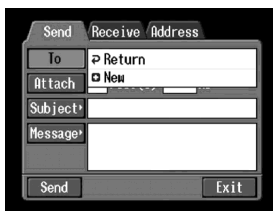
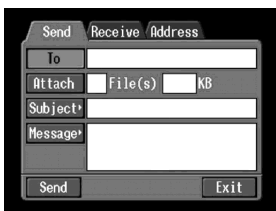
For details on how to open the Network Menu, refer to “Accessing the network” in the operating instructions supplied with your camcorder.



(2) Tap [✉ Mail]. The Send screen appears.



(3) Tap [To].



(4) Tap [⊕ New]. The character input screen appears.



Basic operations in the NETWORK mode

2 Selecting the character type

Tap [abc↔123], then tap the desired character type.



abc: When inputting alphabetical characters.

123: When inputting numerical characters.

When you selected abc



When you selected 123



3 Inputting characters

(1) Tap the character you want to input.



(2) After you input the characters, tap [Enter].

The screen which is displayed before you display the character input screen appears.



Character input display



- 1 [a/A] button**
[a/A] button is displayed when you input alphabetical characters. You can switch between upper case and lower case.
- 2 [abc↔123] button**
A list box appears when you tap the [abc↔123] button. Tap the desired type of letter from the list box.
- 3 Input byte number/maximum byte number**
- 4 Preferences**
You can change the keyboard type for alphabet input.
- 5 Text area**
You can scroll up or down the display by tapping ▲ or ▼.
- 6 [Space] button**
A space is entered.
- 7 [Back Space] button**
The letter right before the cursor is deleted. If you tap the button for about three seconds, all the characters before the cursor are deleted.
- 8 ↵ button**
The cursor moves to a new line.
- 9 [Enter] button**
Tap this button to decide or close the input screen.

Basic operations in the NETWORK mode

The available characters list

When selecting [abc]

Alphabetical characters

The alphabet keyboard has 2 types (PC Style and Alphabetical order). The default setting is PC arrangement. You can change the keyboard setting in . Refer to page 17 for more information.

(PC Style)



(Alphabetical order)



a	b	c	d	e	f	g	h	i	j	k	l	m
n	o	p	q	r	s	t	u	v	w	x	y	z
A	B	C	D	E	F	G	H	I	J	K	L	M
N	O	P	Q	R	S	T	U	V	W	X	Y	Z

Symbol characters

The symbol characters below are inputted by single tapping:

~	-	_	@	:
---	---	---	---	---

The green keys input the symbol characters.

The symbol characters change as follows:

Key	Character
	a: à → á → â → a → ... e: è → é → ê → e → ... i: ì → í → î → i → ... o: ò → ó → ô → o → ... u: ù → ú → û → u → ... y: ý → y → ... A: À → Á → Â → A → ... E: È → É → Ê → E → ... I: Ì → Í → Î → I → ... O: Ò → Ó → Ô → O → ... U: Ù → Ú → Û → U → ... Y: Ý → Y → ...
	a: ä → å → a → ... e: ë → e → ... i: ï → i → ... n: ñ → n → ... o: ö → ø → o → ... u: ü → u → ... y: ÿ → y → ... A: Ä → Å → A → ... E: Ë → E → ... I: Ï → I → ... N: Ñ → N → ... O: Ö → Ø → O → ... U: Ü → U → ...
	' → " → ' → ...
	? → ¿ → ? → ...
	! → ¡ → ! → ...
	ς → Ç → ß → ç → ...
	. → , → . → ...
	/ → \ → / → ...

* You can input the alphabet characters with accent symbols. When you input the characters, tap or after inputting a, e, i, n, o, u, y, A, E, I, N, O, U or Y.

When selecting [123] Symbol characters

(Numerical order)



1	2	3	+	()	\$	€	\	%
4	5	6	-	[]	&	^		~
7	8	9	/	{	}	`	"	'	,
*	0	#	=	<	>	.	:	;	_

To switch between upper and lower case alphabet letters

Tap [a/A] to change the alphabetical keyboard, then enter characters.

To delete a character

Move the cursor with the stylus to the right of the character at which you want to delete, tap [Back space]. The character at the left of the cursor is deleted.

To add a character

Move the cursor with the stylus to the position at which you want to add a character, then input characters.

To start a new line

Tap [↵].

Basic operations in the NETWORK mode

E.g., Enter "Hello" into the Subject item on the Send screen

1

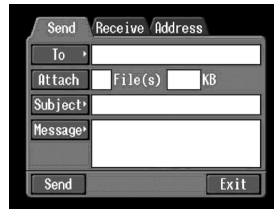
(1) Open the Network Menu.

For details on how to open the Network Menu, refer to "Accessing the network" in the operating instructions supplied with your camcorder.



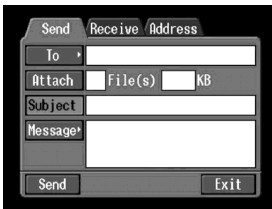
(2) Tap [✉ Mail].

The Send screen appears.



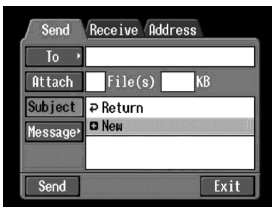
2 Entering the subject of a message

(1) Tap [Subject].



(2) Tap [+ New].

The character input screen appears.

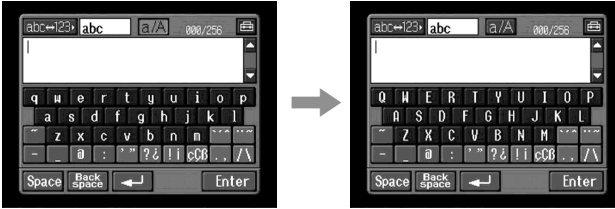


Basic operations in the NETWORK mode

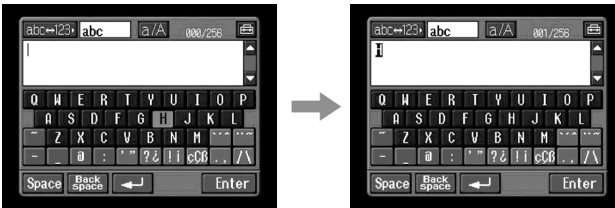
- 3** (1) Tap [abc↔123], then tap [abc].



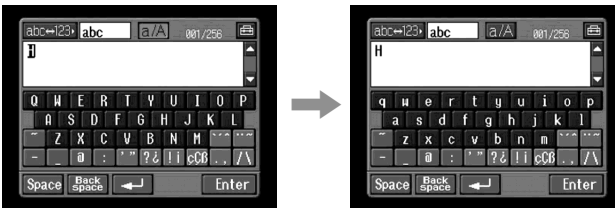
- (2) Tap [a/A] to be able to enter upper-case letters.



- (3) Tap [H].
"H" is entered.

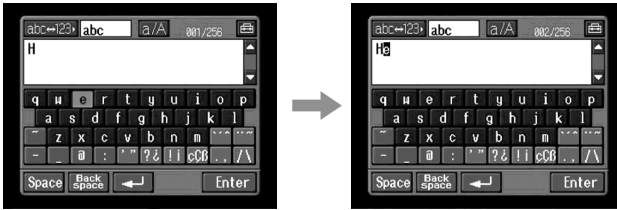


- (4) Tap [a/A] to be able to enter lower-case letters.

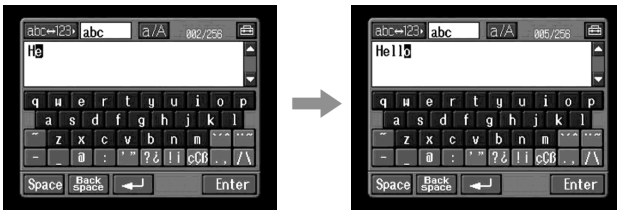


Basic operations in the NETWORK mode

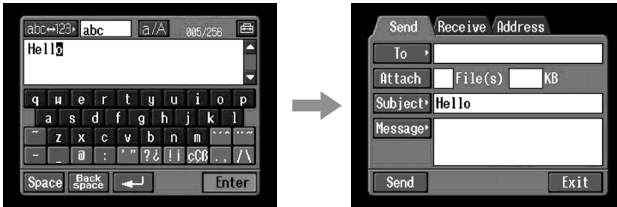
- (5) Tap [e].
"e" is entered.



- (6) Tap [l], [l] and [o].
"llo" is entered.



- (7) Tap [Enter].
"Hello" is entered and the Send screen appears again.



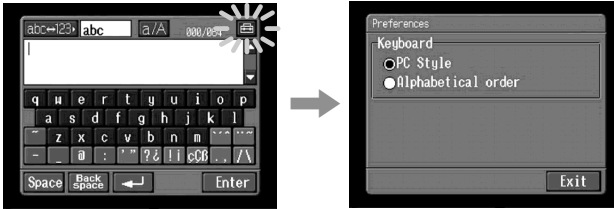
Basic operations in the NETWORK mode

Character input setting

Keyboard

You can change the display of the alphabet, PC arrangement keyboard or ABC arrangement keyboard into a setup you want when you input characters.

1 Tap in the character input screen.



2 Tap the desired setting.

You can set as the following two displays when [abc↔123] is set as [abc].
(PC Style is the default setting.)


- PC Style (PC arrangement keyboard)
- Alphabetical order (ABC arrangement keyboard)



PC Style



Alphabetical order

To switch the setting, tap  on the upper-right LCD screen.

Using the NETWORK functions

There are three Network functions, namely Album on the Web, email, and browser. To use the Album on the Web, you need to complete customer registration.

“So-net” is charged service.

For more information, see the supplied leaflet “Start Here!”.

To fully use the function in the NETWORK mode, you have to complete the following registrations with your computer (1~3) and setup tasks via your camcorder (4, 5):

- 1 DI customer registration (p. 28)**
- 2 Registration for “So-net” * (p. 31)**
- 3 Registration for Album on the Web (p. 29)**
- 4 Network Setup (p. 32)**
- 5 Registering a Bluetooth device (p. 20)**

* Registration for “So-net” is not necessary to use the other provider.

URL for Registration:

“<http://www.sony.co.uk/imaging/>”

Overview of the Bluetooth wireless technology

What is the Bluetooth wireless technology?

The Bluetooth wireless technology allows communication between various Bluetooth devices without using cables. Devices which can use this technology include PCs, computer peripheral devices, PDAs, and mobile phones. This omnidirectional communication system enables communication even if the Bluetooth device is in a bag or having obstacles between the devices.

Also, the Bluetooth wireless technology has advanced security functions, such as scrambled frequencies and data encryption.

Authentication

The authentication routine can block unspecified users' access to this network. When attempting communication with an unregistered Bluetooth device, the devices must first be registered with each other by entering a common passkey to each device. When connecting with a previously registered Bluetooth device, communication starts without entering the passkey.

Overview of the Bluetooth wireless technology

Registering a Bluetooth device

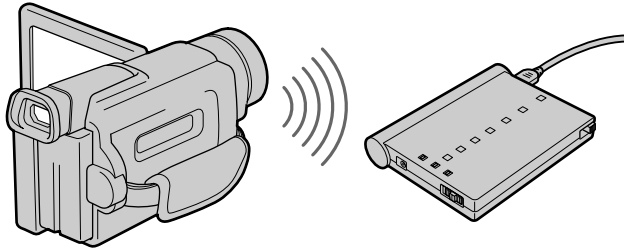
This section describes making a registration of a Bluetooth device. Here we describe the procedure for registering the Sony Modem Adaptor with Bluetooth Function. Once the registration is completed, your camcorder can connect to your Bluetooth device without reregistering the device. You can register up to three Bluetooth devices. Also, refer to the operating instructions supplied with your Bluetooth device.

For more information about Bluetooth devices compatible with your camcorder, access the following URL: "<http://www.sony-imaging.com/support/>"

Notes

- When using Sony BTA-NW1/BTA-NW1A Modem Adaptor with Bluetooth Function, place it at a location that has no obstacles between your camcorder and the device. The distance between the devices must be within 10 m (33 feet).
- The connection may be interrupted depending on the communication conditions.

Using your Modem Adaptor with Bluetooth Function



1 Preparing the Modem Adaptor with Bluetooth Function

Set the Modem Adaptor with Bluetooth Function to connection standby (BONDING). For details, refer to the operating instructions supplied with your Modem Adaptor with Bluetooth Function.

Overview of the Bluetooth wireless technology

2 Specifying your Modem Adaptor with Bluetooth Function as the connection device

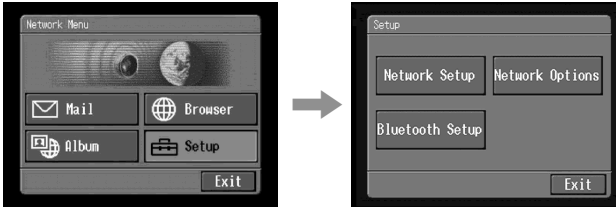
- (1) Open the Network Menu.

For details on how to open the Network Menu, refer to “Accessing the network” in the operating instructions supplied with your camcorder.



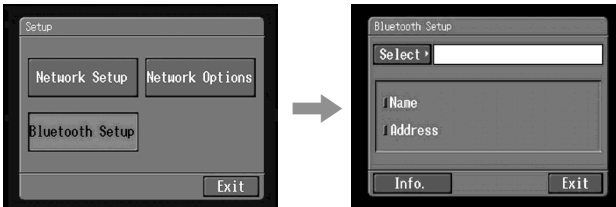
- (2) Tap [Setup].

The Setup screen appears.



- (3) Tap [Bluetooth Setup].

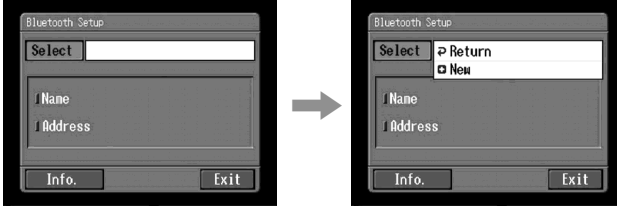
The Bluetooth Setup screen appears.



Overview of the Bluetooth wireless technology

(4) Tap [Select].

The Bluetooth devices list appears. When making a registration for the first time, only [↩ Return] and [⊕ New] are indicated. The list shows up to three Bluetooth devices. You can select one of the latest used three Bluetooth devices from the list.



Tip

The last-used Bluetooth device is listed next to [↩ Return] and [⊕ New].

(5) Tap [⊕ New].

Your camcorder starts searching for your Bluetooth devices. When the searching is completed, the available Bluetooth devices list appears. When some Bluetooth devices with the same name appear, display each Bluetooth device address by tapping [More info].

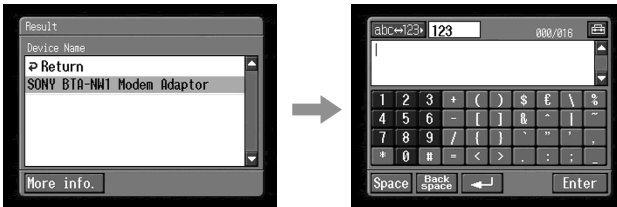


Notes

- The search takes from about 10 to 60 seconds. The time depends on the number of Bluetooth devices around your camcorder.
- If the Bluetooth device you want to register is not found, carry out the procedure again from step 4.

(6) Tap the desired Bluetooth device.

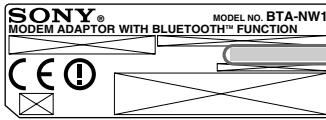
The character input screen appears.



Overview of the Bluetooth wireless technology

(7) Enter the passkey.

For details on how to input characters, see “How to input characters” (p. 9). For example, when using the BTA-NW1/BTA-NW1A Modem Adaptor with Bluetooth Function, the passkey is its serial number which is indicated on the label on the rear panel.



Passkey

The number used when registering a Bluetooth device

Tip on “Passkey”

The passkey is an identification number needed to allow two Bluetooth devices to communicate with each other. The connection will be permitted after entering the passkey. This “Passkey” is also referred to as a “Bluetooth passkey”, “PIN”, “Bluetooth PIN”, etc. For details, refer to the operating instructions supplied with your Bluetooth adaptor.

(8) After entering the passkey, tap [Enter].

After the registration is completed, the Bluetooth Setup screen appears again. “Bluetooth Registration Complete” message is displayed. Tap [OK]. The selected Bluetooth device is specified.

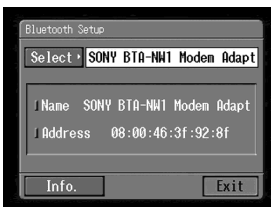


Note

When the message “Bluetooth Registration Error Check the Passkey” is indicated, tap [OK]. Carry out the procedure again from step 4.

(9) Tap [Exit].

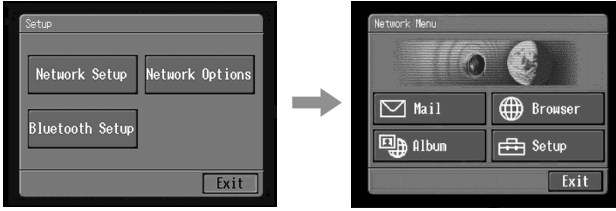
The Setup screen appears again. For details on how to turn off the Modem Adaptor with Bluetooth Function, refer to the operating instructions supplied with your Modem Adaptor with Bluetooth Function.



Overview of the Bluetooth wireless technology

(10) Tap [Exit].

The Network Menu appears again.



When the registration has failed

After pressing [OK], and carry out the procedure described in step 4 on page 22 again.



Displaying information on your camcorder

You can display your camcorder information.

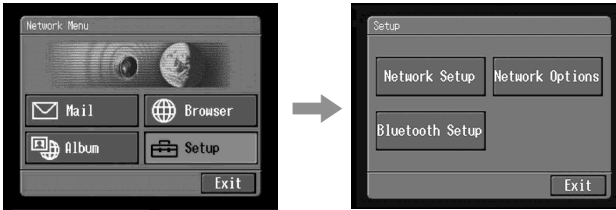
(1) Open the Network Menu.

For details on how to open the Network Menu, refer to “Accessing the network” in the operating instructions supplied with your camcorder.

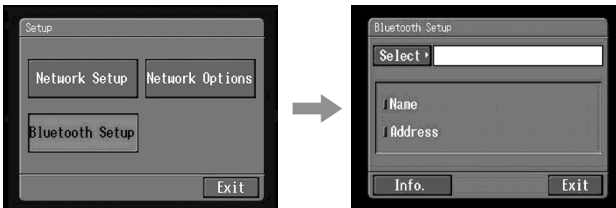


Overview of the Bluetooth wireless technology

- (2) Tap [Setup].
The Setup screen appears.



- (3) Tap [Bluetooth Setup].
The Bluetooth Setup screen appears.



- (4) Tap [Info.].
The Bluetooth Setup: Self information screen appears.



The model name


This is the unique address assigned to each camcorder at the factory. This address is used when exchanging information between devices. This address cannot be modified. (The number indicated on the illustration is an example number.)

To return Bluetooth Setup screen

Tap [Return].

Overview of the Bluetooth wireless technology

Radio wave indication

 indicates the radio wave status of the connected Bluetooth device. (Use this indication as a guide.)

Selecting other Bluetooth devices from the list

Tap the Bluetooth device you want to specify in step 4 on page 22. The device information is indicated.
Tap [Exit].


Deleting a registered Bluetooth device from the list

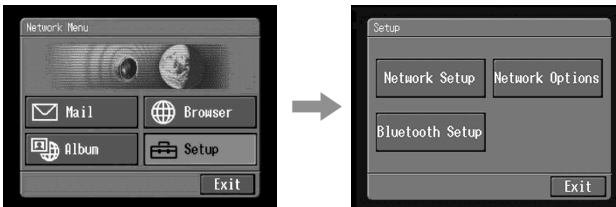
You can register up to three Bluetooth devices on your camcorder. When deleting a Bluetooth device from the list, follow the procedure below.

- (1) Open the Network Menu.

For details on how to open the Network Menu, refer to “Accessing the network” in the operating instructions supplied with your camcorder.

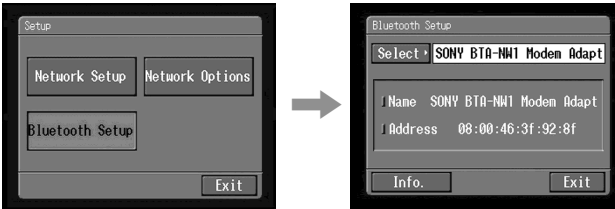


- (2) Tap [ Setup].
The Setup screen appears.

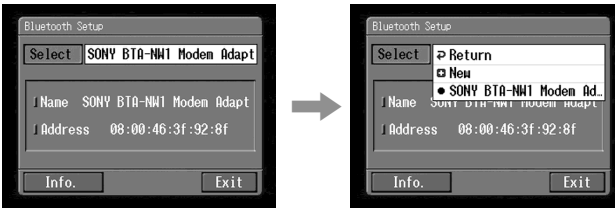


Overview of the Bluetooth wireless technology

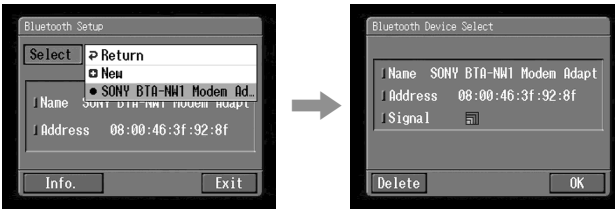
- (3) Tap [Bluetooth Setup].
The Bluetooth Setup screen appears.



- (4) Tap [Select].
The Bluetooth devices list appears.



- (5) Tap the device you want to delete.
The device name and address of the selected device are indicated.



- (6) Tap [Delete].
The selected device is deleted from the list.

Customer registration

DI customer registration

The camcorder offers network functions in addition to its basic functions. In order to take full advantage of these network functions, you should complete the DI (Digital Imaging) customer registration for the services provided. For details on services available, see the supplied leaflet "Start Here!".

In order to take full advantage of the network function, we recommend that you make an online registration with your computer.

When you complete your DI customer registration, your Login name (ID) and password are issued immediately.

Complete DI customer registration

- (1) Access to "<http://www.sony.co.uk/imaging/>" with your computer.
- (2) Click [Register].
- (3) Click Network Handycom registration link or enter your registration code indicated on the registration leaflet supplied with your camcorder.
- (4) Complete DI customer registration following the on-screen guidance.

About the Login name (ID) and password

After the customer registration has been completed, a Login name (ID) and password will be displayed. The Login name (ID) and password are very important, so be sure to write down in the "Setup memo" (p. 106).

Registration for Album on the Web

To upload an image recorded with your camcorder to your personal album, you have to complete your album registration.

Complete the registration for Album on the Web after the DI customer registration is completed

- (1) Access to “<http://www.sony.co.uk/imaging/>” with your computer.
- (2) Click [Register].
- (3) Click Network Handycam registration link or enter your registration code indicated on the registration leaflet supplied with your camcorder.
- (4) Complete the registration for “Album on the Web” following the on-screen guidance.

Tip on Member name

Your member name is a nickname used on the “Album on the Web” site. Once you register your member name, that member name is indicated on your personal album when it is opened using a computer, and it is also used on your invitation card.

Tip

If you do not have email address, get an email address before registering your personal album.

Internet service provider

To access the Internet, you have to sign-up with an Internet service provider (ISP). The provider acts as an intermediary between your camcorder and the Internet. After you sign-up with a provider; you can view various web pages through the Internet, you can send and receive email using your email address. The email address is a destination address in email transmission. Also, various other services may be available depending on your provider.

Notes

- A credit card may be required to sign-up with some providers.
- The connection fee depends on your provider.

Using the recommended provider (So-net)

For details on the services of “So-net”, see the supplied leaflet “Start Here!”.

The “So-net” option makes it easy to set the Internet and email preferences. Once you complete your DI customer registration, you can get your Login name (ID) and password. The Login name (ID) and the password can be used for the “So-net” option when you also register the So-net. Entering your Login name (ID), password, and the telephone number of an access point, you can access the Internet immediately.

Using the other provider

When using the other provider or when not using the “So-net” option, you have to set the Internet and email preferences. For details on setup, see “Setting network preferences” (p. 32).

Note

You cannot use the network function when using a provider that requires its own exclusive browser software.

Registration for “So-net”

Using the “So-net” option, you can easily set the required Internet and email preferences.

For more information, see the supplied leaflet “Start Here!”.

Registration for “So-net” after the DI customer registration is completed

- (1) Access to “<http://www.sony.co.uk/imaging/>” with your computer.
- (2) Click [Register].
- (3) Click Network Handycam registration or enter you registration code indicated on the registration leaflet supplied with your camcorder.
- (4) Complete the registration for “So-net” following the on-screen guidance.

Tip

Be sure to make a note of telephone numbers of access points indicated on the screen on the “Setup memo” (p. 106).

Setting network preferences

You have to access the Internet to make your Album on the Web, view web pages, or send or receive your email. This section describes how to set network preferences to access the Internet.

Entering your Login name (ID) and password

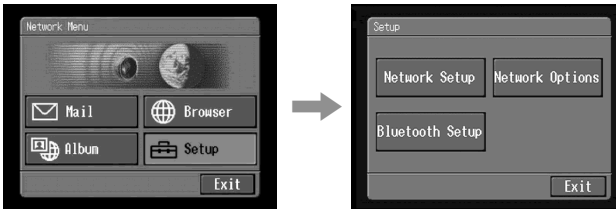
Enter the Login name (ID) and password you obtained as a result of your DI customer registration. This setup is required to use your Album on the Web.

- (1) Open the Network Menu.

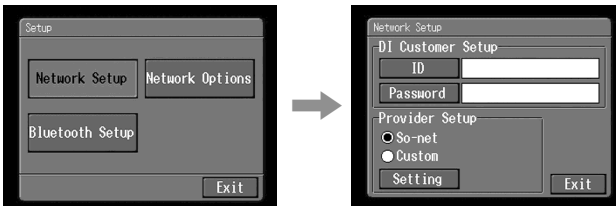
For details on how to open the Network Menu, refer to “Accessing the network” in the operating instructions supplied with your camcorder.



- (2) Tap [Setup].
The Setup screen appears.



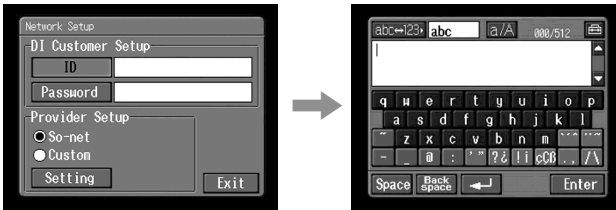
- (3) Tap [Network Setup].
The Network Setup screen appears.



Setting network preferences

- (4) Tap [ID].

The character input screen appears.

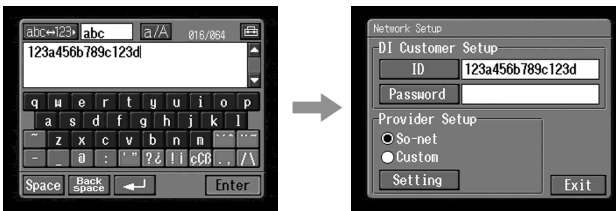


- (5) Enter your Login name (ID).

For details on how to input characters, see “How to input characters” (p. 9).

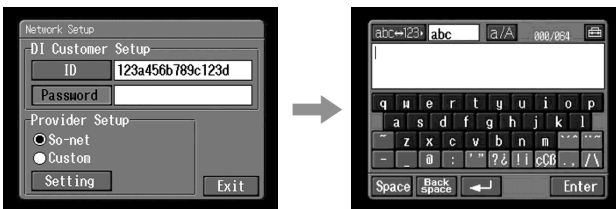
- (6) Tap [Enter].

The Network Setup screen appears again.



- (7) Tap [Password].

The character input screen appears.



- (8) Enter your password.

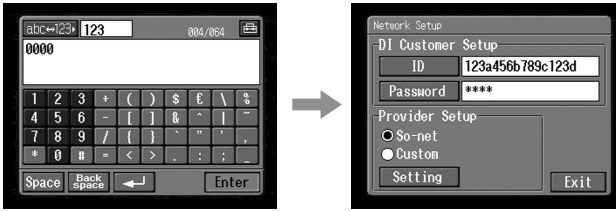
For details on how to input characters, see “How to input characters” (p. 9).

Note

When you check the item “Verify Password” in the Network Options screen, you cannot enter your password. If you try to enter it, the message “Password Already Set Check the Password Profile” appears.

Setting network preferences

- (9) Tap [Enter].
The Network Setup screen appears again.



Tip

While inputting password characters, they are visible as they are. However, after it has been entered, each character is indicated as “*”. If you enter your password again, delete all “*” before entering the password.

- (10) Tap [Exit].
The setup of the Login name (ID) and password are complete, and the Setup screen appears again.

Setting your provider preferences

When using “So-net” carry out the following procedures:

- “1” “So-net” setting”
- “2” Entering the telephone numbers of your access points”
- “4” Setting other preferences”

When using the other provider, carry out the following procedures:

- “3” Setting your provider preferences manually”
- “4” Setting other preferences”

Tip

Even if you do not set up the items described in “4” Setting other preferences,” you can access the Internet by using the default setting.

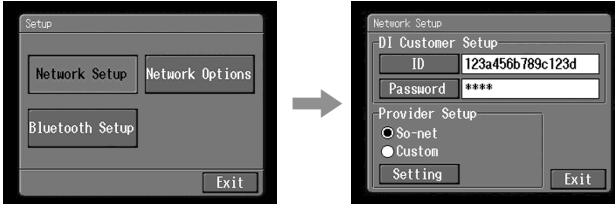
Tip on password

When you check the item “Verify Password” on the Network Options screen, you have to enter your password whenever you connect to your Internet service provider. For details, see “4” Setting other preferences”

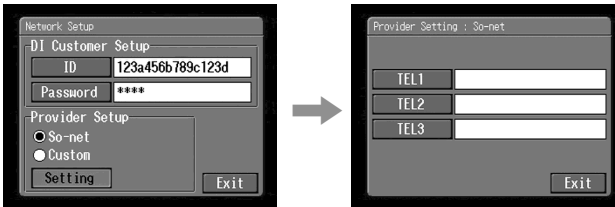
Setting network preferences

1 "So-net" settings

- (1) Tap [Network Setup].
The Network Setup screen appears.
The default setting is "So-net".



- (2) Tap [Setting].
The Provider Setting: So-net screen appears.



Go to "2 Entering the telephone numbers of your access points" on page 36.

Setting network preferences

2 Entering the telephone numbers of your access points

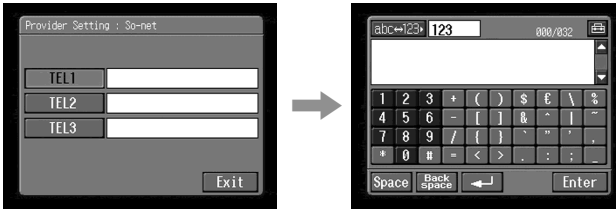
This setup is only for those using “So-net”. For more information on the telephone numbers of access points, see the supplied leaflet “Start Here!”.

Tip on access points

“So-net” installs access points in various areas. We recommend that you select the most convenient access point which allows you to obtain the lowest telephone charges.

(1) Tap [TEL1].

The character input screen appears.



(2) Enter the telephone number of your access point.

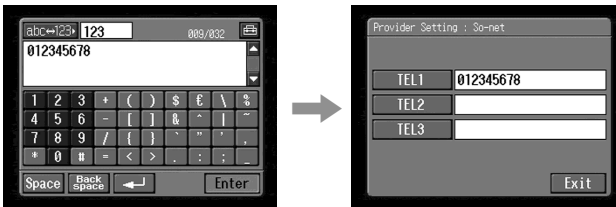
For details on how to input characters, see “How to input characters”(p. 9).

Note

Do not insert hyphens or spaces in the telephone number. (e.g. 012345678)

(3) Tap [Enter].

The Provider Setting: “So-net” screen appears again.



Tip

You can also register the telephone numbers of access points into [TEL2] and [TEL3]. If necessary, enter the numbers into [TEL2] and [TEL3].

(4) Tap [Exit].

The telephone number registration is complete.

Go to “**4** Setting other preferences” (p. 40).

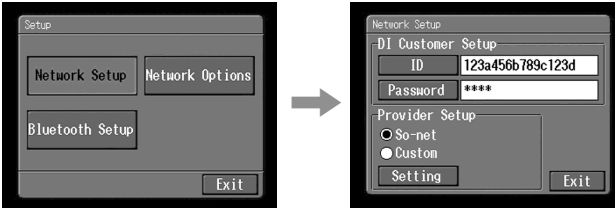
Setting network preferences

3 Setting your provider preferences manually

If you have already made the So-net settings, you do not need to make the following settings.

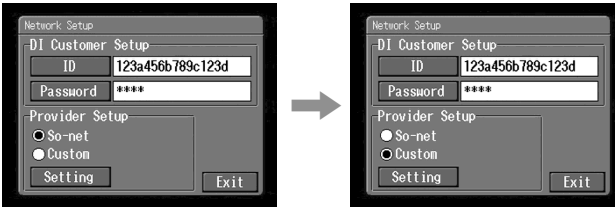
- (1) Tap [Network Setup].

The Network Setup screen appears.



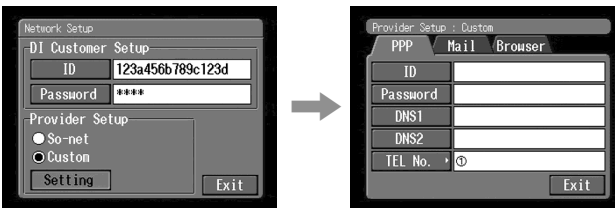
- (2) Tap [Custom].

is checked and changes to .



- (3) Tap [Setting].

The Provider Setup: Custom screen appears.



- (4) Tap [PPP].



Setting network preferences

(5) Set up the following items:

ID: Enter the login name you use for accessing your provider using a dial-up connection. This “ID” is also referred to as a “user ID”, “login name”, “PPP login name”, “network ID”, “account name”, “logon name”, “user name”, etc.

Password: Enter the password you use for accessing your provider using a dial-up connection. (Dial-up connection → “Glossary” (p. 104)) This “Password” is also referred to as a “PPP password”, “network password”, “connection password”, etc.

DNS1: Enter the DNS (Domain Name System) server address of your provider.

- This “DNS1” is also referred to as a “name server”, “primary DNS server”, “primary name server”, etc.
- This entry may be unnecessary, depending on your provider. For details, consult your provider.

DNS2: Enter the secondary DNS server address of your provider, if necessary.

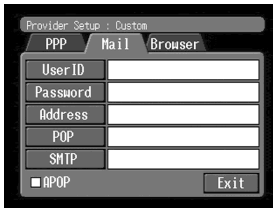
- This “DNS2” is also referred to as a “secondary DNS server”, etc.
- This entry may be unnecessary, depending on your provider. For details, consult your provider.

TEL No. ①: Enter the telephone number of your most convenient access point. (Access point → “Glossary” (p. 104))

TEL No. ②/TEL No. ③: Enter the second and third telephone numbers, if necessary.

(6) Tap [Mail].

The Mail preference screen appears.



(7) Set up the following items:

User ID: Enter the user ID name you use for your provider.

Password: Enter the password of your user ID for accessing the POP server. Your user ID and password are required to use email. This “Password” is also referred to as a “mail password”, “mail server password”, etc.

Address: Enter your email address. This “Address” is also referred to as a “mail address”, “email address”, etc.

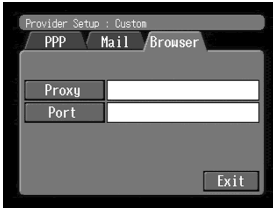
Setting network preferences

POP Server: Enter the POP (Post Office Protocol) server address of your provider. The POP server is for receiving email. This “POP Server” is also referred to as a “mail server”, “POP3 server”, etc.

SMTP Server: Enter the SMTP (Simple Mail Transfer Protocol) server address of your provider. The SMTP server is for sending email. This “SMTP Server” is also referred to as a “mail server”, “SMTP mail server”, etc. The SMTP server may be the same as the POP server, depending on the provider.

APOP: Select whether you want to use APOP. (APOP → “Glossary” (p. 104))

- (8) Tap [Browser].
The Browser screen appears.



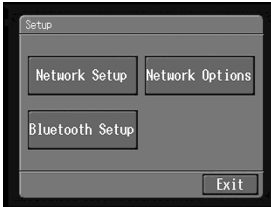
- (9) Set up the following items:
Proxy: Enter the proxy server address of your provider.
Port: Enter the port number of the proxy server of your provider. This entry may be unnecessary, depending on your provider. For details, consult your provider.
- (10) Tap [Exit].
The setup is completed, and the Network Setup screen appears again.
- (11) Tap [Exit].
The Setup screen appears again.

Setting network preferences

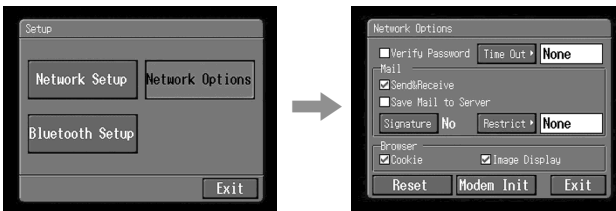
4 Setting other preferences

You can access the Internet with your camcorder using the default settings. It is not necessary to make the following settings. This example is provided to show you how to make changes, if necessary, in the future.

- (1) Display the Setup screen.



- (2) Tap [Network Options].
The Network Options screen appears.



- (3) Set up the following items:

Verify Password: Select whether password entry is required when you access your provider. When you check this item, your password on the PPP screen is deleted. You have to enter your Login name (ID) and password for accessing your Album on the Web, or enter your password for accessing your provider each time you try to make a connection. This can prevent other persons from connecting to your provider using your ID.

Note

When this item is checked:

- You cannot set your Login name (ID) password and your password for accessing your provider.
- You cannot use your Album on the Web if you set your preferences manually.

Time Out: Select whether the connection is automatically canceled if no communication is made for specific time (1 minute, 2 minutes, 5 minutes, 15 minutes, or 30 minutes).

Note

Although you have selected a specific time for the “Time Out” function, the line connection may not be canceled automatically, depends on the web page you access. In this case, you can cancel the line connection manually (page 93).

Setting network preferences

Mail

Send&Receive: Select whether to check the email inbox after sending email.

Restrict: Select whether to skip an email message if its file size is more than 50 KB, 200 KB, or 500 KB.

Save Mail to Server: Select whether to keep copies of the messages on the server.

Note

If you try to receive email without checking this item, email messages may not be downloaded and **may be lost from your server**, depending on the type of email you receive. For details, see “Note on “Save Mail to Server”” (p. 42).

Signature: Set up this item when you want to attach your signature to email.

Browser

Cookie: Select whether to accept a cookie. When you do not want to send your personal information, do not check this item. This item is checked at the default setting.

Image Display: Select whether to display images on the screen when viewing a web page. This item is checked at the default setting.

Reset: Reset all the items on the Network Options screen except “Signature” and “Modem Init.”

Note

A verification message does not appear when you try to reset items.

Modem Init: Set up the character string to be used for modem initialization. If no setup is specified, you do not need to modify this item.

Note

If the setup is wrong, the message “Connection Error No Response From PPP Server” appears when you try to access the Internet and you will not be able to access the Internet.

- (4) Tap [Exit].
The Setup screen appears again.

Setting network preferences

Note on “Save Mail to Server”

When “Save Mail to Server” is not checked, copies of email messages received will not be stored on your server. However, the following error messages described below depend on the type of email messages. See the table below.

Messages ¹⁾	Cause and/or Corrective Actions
Memory Stick Memory Full	<p>You tried to download email when the “Memory Stick” is already full. ²⁾</p> <ul style="list-style-type: none">→ Delete the email, and delete unnecessary email messages or image files in the “Memory Stick,” then download your email again.→ Insert another “Memory Stick” that has sufficient memory, then download your email again.
Mail Over Size Limit	<ul style="list-style-type: none">• You tried to download email whose size is over the size set in the item “Restrict”. ²⁾<ul style="list-style-type: none">→ You can download that email using your computer, etc.→ Delete the email, and release the checkmark of the item “Restrict”, then download that email again.• You downloaded an email message whose the number of characters of the message is more than 4 000. ³⁾<ul style="list-style-type: none">→ The camcorder cannot receive an email message that has 4 000 characters or more. ⁴⁾
Attached Invalid File Deleted	<p>You downloaded email that has an attached file whose file name extension is invalid. ³⁾</p> <ul style="list-style-type: none">→ The camcorder cannot receive files other than those in the JPEG or MPEG format.
Memory Stick Directory Error	<ul style="list-style-type: none">→ Insert another “Memory Stick” that has sufficient memory, then download your email again.

¹⁾ These error messages are indicated in a message.

²⁾ These email messages are stored on the server even if you did not check the item “Save Mail to Server”. You can retrieve that email using your computer, etc.

³⁾ The previously downloaded email is not stored on the server if you did not check the item “Save Mail to Server”. You cannot retrieve this email using your computer, etc.

⁴⁾ For email messages that have lots of line break, the number of available characters is less than 4 000.

Making your Album on the Web

You can upload still or moving images to Sony's "Album on the Web" via the Internet and post the images on your personal album.

You can make your personal album as a simplified web page and send invitation cards to invite your friends to your album.

You can also access your Album on the Web with your computer. To access your album from your computer, log in to the "Album on the Web" site with your Login name (ID) and password.

For more information, access Sony's "Album on the Web" site ("http://www.sonystyle-club.com/imaging/").

Uploading images to your Album on the Web

Once you have your personal Album on the Web, you can upload images to the album, and send invitation cards to your friends. This section describes how to upload your images and send invitation cards.

As for moving images, upload images within the file size constraints of "Album on the Web". For details, access "http://www.sonystyle-club.com/imaging/".

Before operation

Store the desired images in a "Memory Stick" and insert it into your camcorder.

1 Selecting an album

First, select an album to use to upload images.

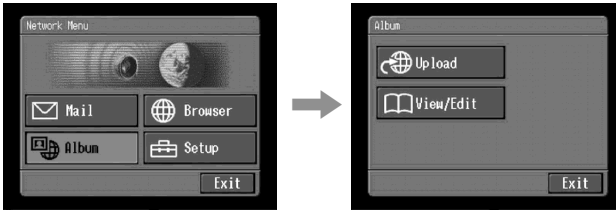
(1) Open the Network Menu.

For details on how to open the Network Menu, refer to "Accessing the network" in the operating instructions supplied with your camcorder.

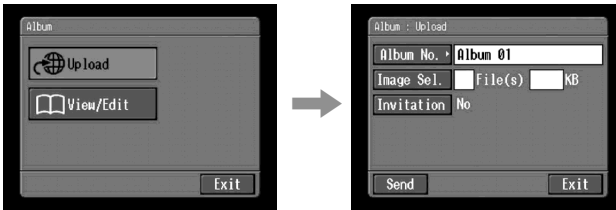


Making your Album on the Web

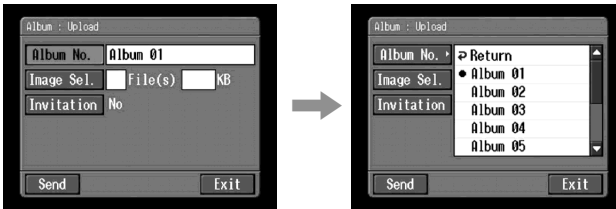
- (2) Tap [Album].
The Album screen appears.



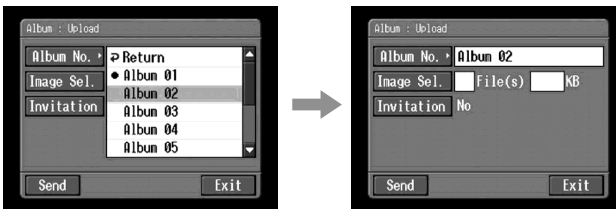
- (3) Tap [Upload].
The Album: Upload screen appears.



- (4) Tap [Album No.].
The album list page appears.



- (5) Tap the desired album.
Selecting the album is complete.



The number of prepared albums
There are 10 albums (Album 01 to 10).

Making your Album on the Web

2 Selecting images to upload

Next, select the images to upload.

- (1) Tap [Image Sel.].
The image index list appears.



- (2) Tap the desired images.
Tap the image you want to upload. The selected image is indicated by the checkmark (✓).



To page up or down the image index list

Tap [◀] or [▶]. The next or previous page that contains six images is displayed.

- (3) Repeat step 2 to select other images.

Notes

- The total number of images you can upload is 99, and the maximum file size you can upload is up to total 3 MB.
- You can upload images to only one album once.

- (4) Tap [OK].
The Album: Upload screen appears again. The total number of selected images and total file size are indicated.



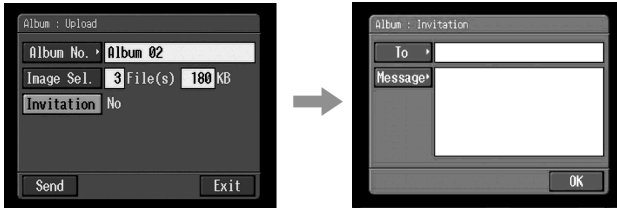
When you only want to upload images, go to “5 Uploading images” (p. 49).

Making your Album on the Web

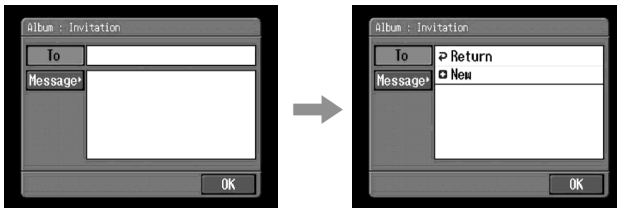
3 Sending an invitation card (email)

Select the addressee to send the invitation card (email) to.

- (1) Tap [Invitation].
The Album: Invitation screen appears.



- (2) Tap [To].
The address list appears. The list shows the destination addresses that are registered in the address book. For details on the address book, see "Using the address book" (p. 67).

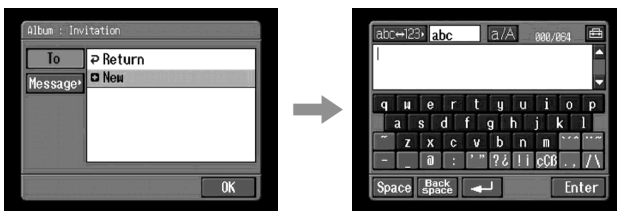


When you have selected the address listed in the address book, go to step 6.

Tips

- The last-used address is listed next to New.
- Addresses are listed in historical order.

- (3) Tap [+ New].
The character input screen appears.

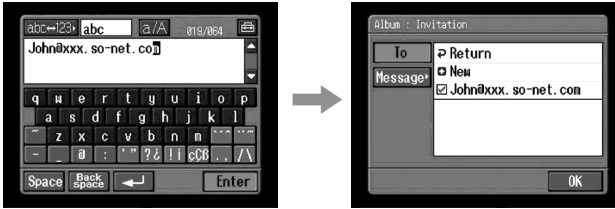


- (4) Enter the email address of the destination address.
For details on how to input characters, see "How to input characters" (p. 9).

Making your Album on the Web

- (5) Tap [Enter].

The Album: Invitation screen appears again. The new email address is listed and its check box is indicated by the checkmark (✓).



- (6) If you want to send the invitation card to other addressees, tap other email addresses.

The check box of the selected email address is indicated by the checkmark (✓).

- (7) Tap [Return].

The Album: Invitation screen appears again.

Note

If you try to send an invitation card with 50 addresses registered in the address book, the last-used address will be deleted. The message "Address Book Full Overwrite the Data with Current Address?" appears for verification. To overwrite it, tap [OK]. Otherwise you tap [Cancel], and delete the unnecessary address from the address book, then enter a new address.

Making your Album on the Web

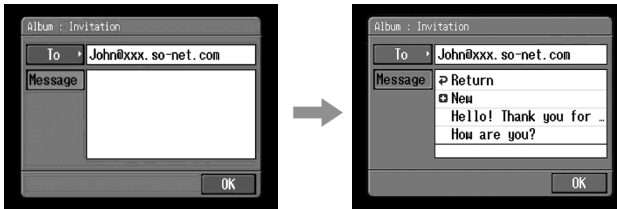
4 Entering the text of a message

Enter the text of the message. You can select the text from the message list, or edit it to suit your purposes. The list shows up to six messages.

Selecting a lately used message

Tap [Message].

The message list appears.



The list shows messages that were written previously. Tap the message to select it from the list.

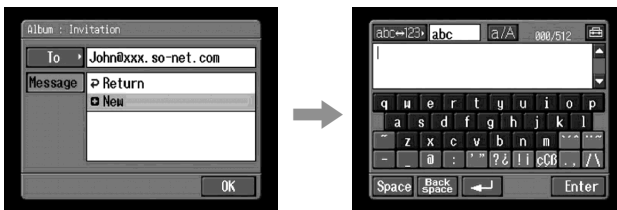
If you want to edit text, tap [Edit]. The character input screen appears. Go to step 3.

When desired text is selected, tap [OK]. After you select the message, go to “5 Uploading images” (p. 49).

Writing a new message

(1) Tap [+ New].

The character input screen appears.



(2) Enter your text.

For details on how to input characters, see “How to input characters” (p. 9).

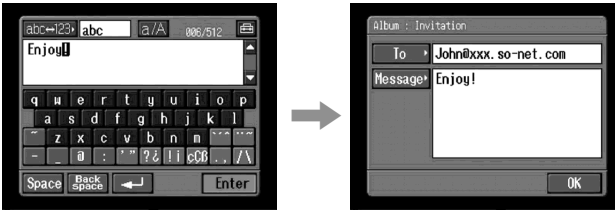
Note

The maximum number of characters you can enter is 512.

Making your Album on the Web

- (3) Tap [Enter].

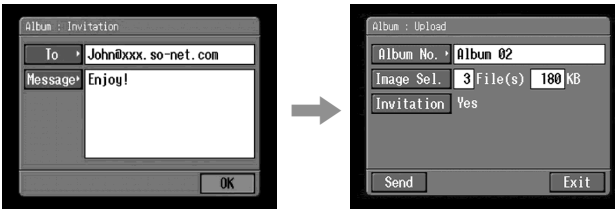
The Album: Invitation screen appears again.



- (4) Tap [OK].

The Album: Upload screen appears again.

“Yes” is indicated next to [Invitation].

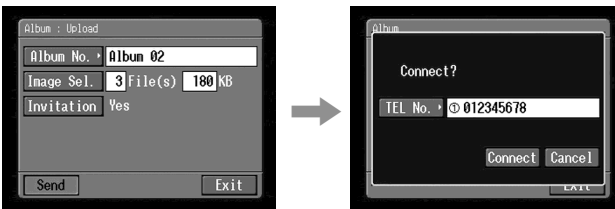


5 Uploading images

- (1) Tap [Send].

The screen for verifying the connection appears.

Set your Bluetooth device to connection standby with your camcorder beforehand. For details, refer to the operating instructions supplied with your Bluetooth device.



- (2) Check the telephone number.

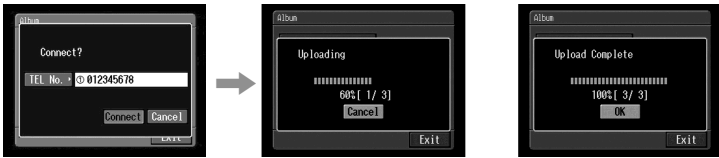
When dialing other telephone numbers

Tap [TEL No.]. The registered telephone number list appears. Tap the desired telephone number to select it.

Making your Album on the Web

(3) Tap [Connect].

Your camcorder starts dialing the selected telephone number. After the uploading is completed, the message "Upload Complete" appears.



(4) Tap [OK].

The Album: Upload screen appears again.

To cancel uploading

During uploading, tap [Cancel].

To send only an invitation card (email)

You can send an invitation card without uploading images. Carry out the following procedures:

- "1 Selecting an album" (p. 43)
- "3 Sending an invitation card" (email) (p. 46)
- "4 Entering the text of a message" (p. 48)
- "5 Uploading images" (p. 49)

After the invitation card has been sent, the message "Invitation Mail Complete" appears.

Viewing or editing your Album on the Web

You can view or download images from your Album on the Web.

1 Viewing images

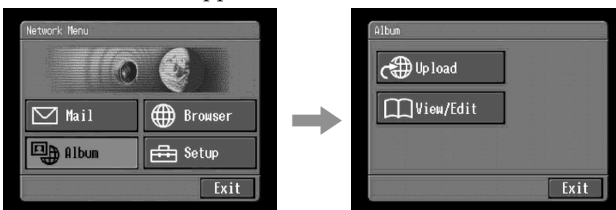
(1) Open the Network Menu.

For details on how to open the Network Menu, refer to "Accessing the network" in the operating instructions supplied with your camcorder.



(2) Tap [Album].

The Album screen appears.

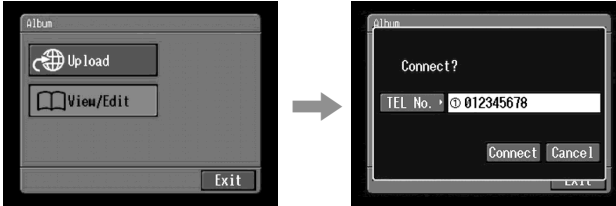


Making your Album on the Web

- (3) Tap [View/Edit].

The screen for verifying the connection appears.

Set your Bluetooth device to connection standby with your camcorder beforehand. For details, refer to the operating instructions supplied with your Bluetooth device.



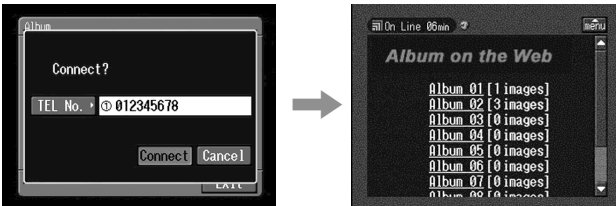
- (4) Check the telephone number.

When dialing other telephone numbers

Tap [TEL No.]. The registered telephone number list appears. Tap the desired telephone number. The selected telephone number is specified.

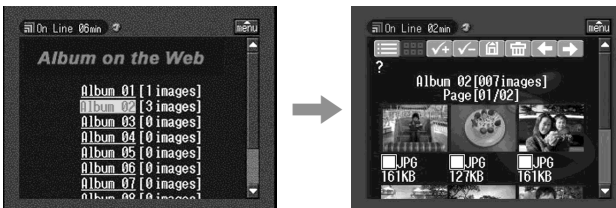
- (5) Tap [Connect].

Your camcorder starts dialing the selected telephone number. After the connection is completed, the album list page appears.



- (6) Tap the album number that you want to view or edit.

The index page appears.



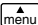

To see a description of each function button

Tap [?].

- (7) Tap the desired image.

The image is enlarged to fill the screen.

Tips

- When you want to end viewing or editing images in your album on the Web, tap  on the upper-right LCD screen, then tap .
- The actual screen may differ.

Making your Album on the Web

2 Downloading images from the album

Before operation

- Insert a “Memory Stick” into your camcorder, for storing images.
- Release the lock of the “Memory Stick.”

(1) Select the images you want to download.

You can select the images in the following two ways:

Selecting images from the index page:

You can select several images and download them at one time. For details, see “To select images from the index page” (p. 53).

Selecting an image displayed on the single-image page:

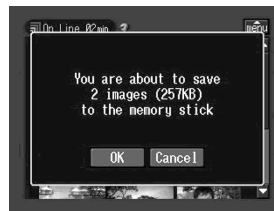
You can select the image displayed on the single-image page and download it. For details, see “To select an image displayed on the single-image page” (p. 54).

(2) Check the number of images and the total file size.

When you selected a single image



When you selected several images

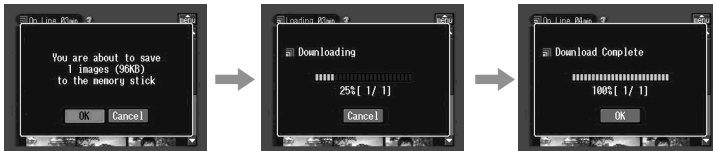


To cancel downloading the images

Tap [Cancel].

(3) Tap [OK].

The message “Downloading” appears. After the downloading is completed, the message “Download Complete” appears.



(4) Tap [OK].

The index page or single-image page appears.

To cancel downloading

During downloading, tap [Cancel].

Making your Album on the Web

To view a downloaded image

Exit the NETWORK mode, then view the image following the same procedure as that for viewing an image recorded on a “Memory Stick.” In such cases, the file name of the still image displayed on your camcorder is indicated in the following order: 700-0001, 700-0002, 700-0003 ...

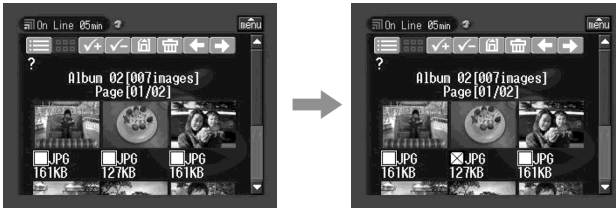
Notes

- Do not eject the “Memory Stick” during downloading.
- After completing downloading, the check mark (s) remains on selected images.
- You can download **JPG** and **MPG** files.
- When you download images modified with your computer or images recorded with other devices, your camcorder may not be able to play back the images properly.

To select images from the index page

- (1) Tap the check box of the desired image.

The check box is indicated by the checkmark (☑).

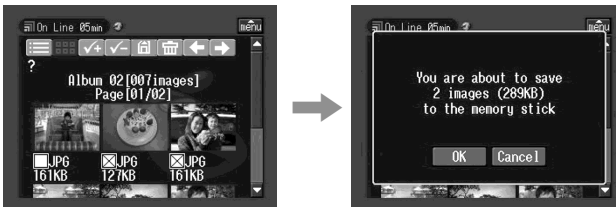


- (2) When you select other images, repeat step 1.

- (3) Tap .

The screen for verification appears.

Set your Bluetooth device to connection standby with your camcorder beforehand. For details, refer to the operating instructions supplied with your Bluetooth device.



To select all the images

Tap .

To cancel image selections

Tap the check box of the image again.

Making your Album on the Web

To cancel all the selected images

Tap .

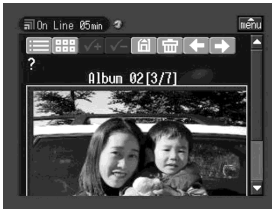
To return to the album list page



Tap .

To select an image displayed on the single-image page

You can select an image displayed on the full-screen and download it.

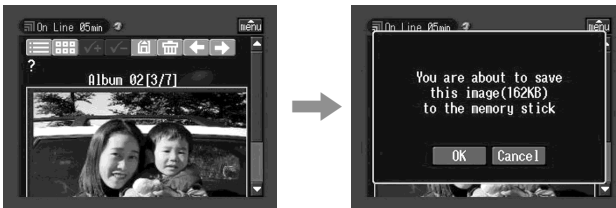
- (1) When the index page is displayed, tap the image to be enlarged.
The image is indicated on the single-image page.



- (2) When you want to view other image, tap  or .

- (3) Tap .

The screen for verification appears.



To return to the index page

Tap .

To return to the album list page


Tap .

Making your Album on the Web


Deleting images from your album

You can delete images from your album.

To delete images displayed on the index page

You can select several images and delete them at one time. Tap  in step 3 in “To select images from the index page” (p. 53). The screen for verification appears. Tap [OK]. The index page appears again.

To delete an image displayed on the single-image page

Tap  in step 3 in “To select an image displayed on the single-image page” (p. 54). The screen for verification appears. Tap [OK]. The next image is displayed.

If the album is empty

The message “There is no picture in this album.” appears.

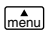


Return to the Album list page

Tap .

Finishing viewing or editing the album

To finish viewing or editing the album, and disconnect the phone line


- (1) When the menu bar is not displayed, tap  on the upper-right LCD screen. The menu bar appears.



- (2) Tap  (End).

The album is closed, then the line is disconnected.

To only disconnect the phone line

Tap  (Line Close). Only the phone line is disconnected.

Tip

When you only disconnect the phone line, you can continue to view the album displayed on the screen. If you try to download an image, delete an image, or view another album, verification appears on the screen.

Using email

This section describes the basic usage of email. Email is sent and received via the Internet. Email is very convenient; you can send email anytime, and you can also send images stored in a “Memory Stick” by attaching them to email.

Sending email

By entering the email address of the destination, you can send an email message in a moment.

1 Specifying the destination address

Be careful to enter the address correctly.

Tip

You can select the email address from the address book. For details, see “Selecting the destination address from the address book” (p. 72).

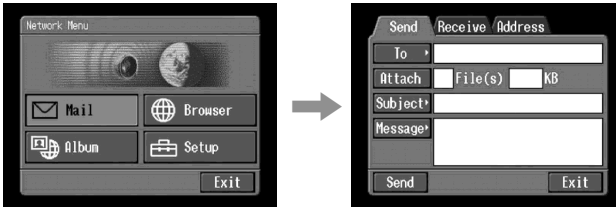
(1) Open the Network Menu.

For details on how to open the Network Menu, refer to “Accessing the network” in the operating instructions supplied with your camcorder.



(2) Tap [✉ Mail].

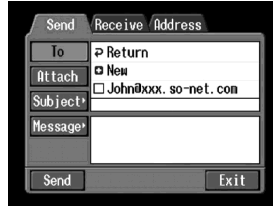
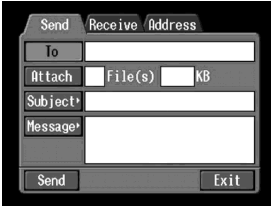
The Send screen appears.



Using email

(3) Tap [To].

The address list appears. The list shows the latest used six addresses that are registered in the address book. For details on the address book, see “Using the address book” (p. 67). When you have selected an address listed in the address book, go to step 7.



Tips

- The last-used address is listed next to [Return] and [New].
- Addresses are listed in historical order.

(4) Tap [New].

The character input screen appears.



(5) Enter the email address of an addressee.

For details on how to input characters, see “How to input characters” (p. 9).

(6) Tap [Enter].


The Send screen appears again. The new email address is listed and its check box is indicated by the checkmark (✓).



Tip

You can correct or revise the email address in the address book. For details on the address book, see “Editing or deleting the address book” (p. 70).

Using email

- (7) If you want to send the email message to other addressees, tap other email addresses.
The check box of the tapped email address is indicated by the checkmark (☑).
- (8) Tap [ Return].
The Send screen appears again.

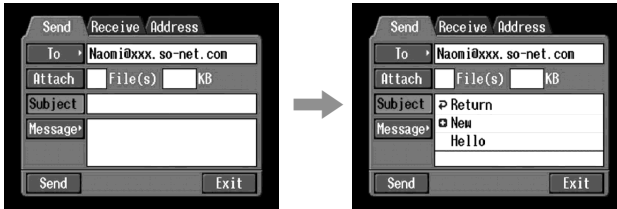
Note

If you try to send an email message with 50 addresses registered in the address book, the last-used address will be deleted. The message “Address Book Full Overwrite the Data with Current Address?” appears for verification. When you overwrite it, tap [OK]. When you tap [Cancel], delete the unnecessary address from the address book, then enter a new address.

2 Entering the subject of a message

- (1) Tap [Subject].

The subject list appears. The list shows the latest used six subjects.



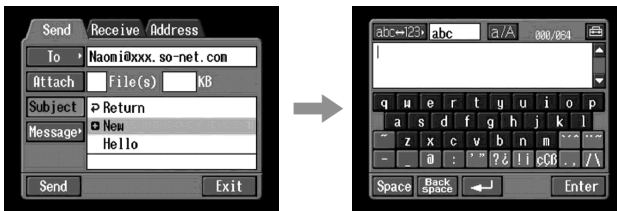
When you want to use a subject shown on the list, tap the subject. After selecting the subject, go to “**3** Entering the text of a message” (p. 60).

Tip

The last-used subject is listed next to [Return] and [New]. You cannot edit or delete the subject.

- (2) Tap [+ New].

The character input screen appears.



- (3) Enter the subject.

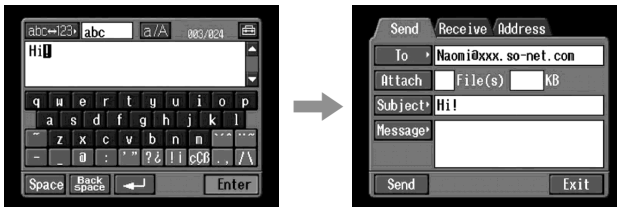
For details on how to input characters, see “How to input characters” (p. 9).

Note

The maximum number of characters you can enter is 24.

- (4) Tap [Enter].

The Send screen appears again.



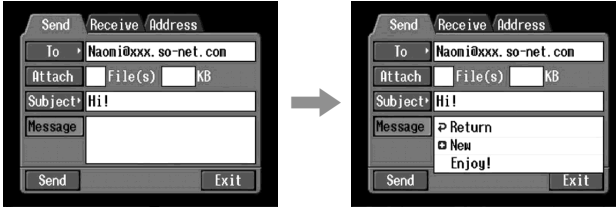
Using email

3 Entering the text of a message

Enter the text of the message. You can select the text from the message list, or edit it to suit your purposes. The list shows up to six messages.

- (1) Tap [Message].

The message list appears.



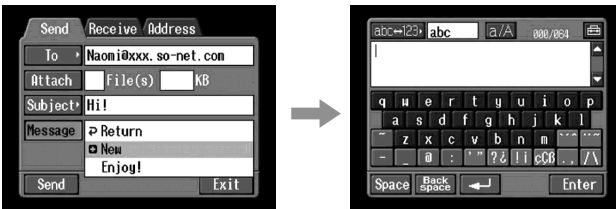
When you select the message you wrote previously, tap the message from the list.

When you do not edit message, tap [OK]. After you select the message, go to “4 Sending email” (p. 61).

If you edit the selected text, tap [Edit]. The character input screen appears. Go to step 3.

- (2) Tap [+ New].

The character input screen appears.



- (3) Enter your message.

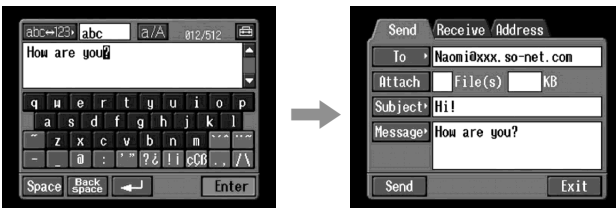
For details on how to input characters, see “How to input characters” (p. 9).

Note

The maximum number of characters you can enter is 512.

- (4) Tap [Enter].

The Send screen appears again.



4 Sending email

Tip

You can send an email message with your signature. For details, see “Attaching your signature to a message” (p. 65).

- (1) Select the image that you want to attach.

When attaching images, see “Attaching images to email” (p. 64).

- (2) Check the message.

When you check or edit a message, see “Checking or editing a message” (p. 62).

- (3) Tap [Send].

The screen for verifying the connection appears.

Set your Bluetooth device to connection standby with your camcorder beforehand. For details, refer to the operating instructions supplied with your Bluetooth device.



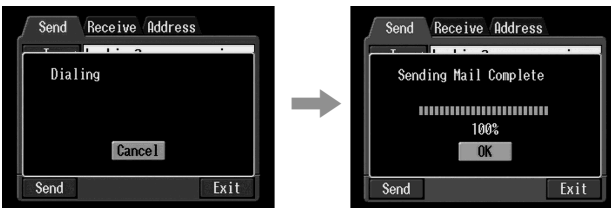
- (4) Check the telephone number.

When dialing other telephone numbers

Tap [TEL No.]. The registered telephone number list appears. Tap the desired telephone number. The selected telephone number is specified.

- (5) Tap [Connect].

Your camcorder starts dialing the selected telephone number. After the sending is completed, the message “Sending Mail Complete” appears. The phone line is automatically disconnected.



Using email

- (6) Tap [OK].
The Send screen appears again.

To cancel sending email

During sending, tap [Cancel].

Tip

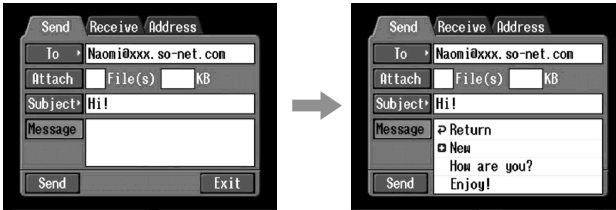
You can automatically check the email inbox after sending email. For details, see “**4** Setting other preferences” (p. 40).

Checking or editing a message

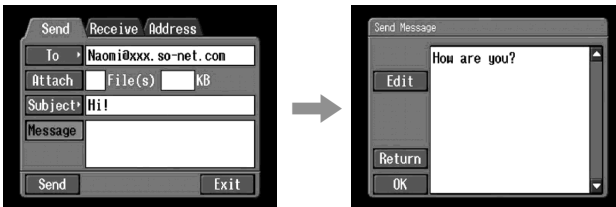
- (1) Display the Send screen.



- (2) Tap [Message].
The message list appears.



- (3) Tap the message you want to check or edit.
The following screen appears.



Using email

- (4) Check or edit the message. When the message is long, tap the message area, then tap the scroll button ▼ to scroll the message.

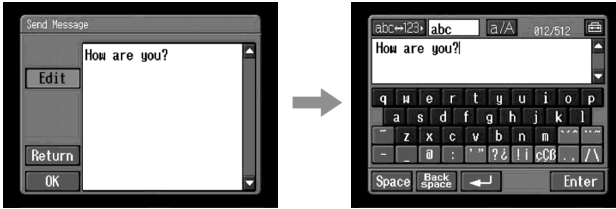
When you only check the message:

After checking the message, tap [OK]. The Send screen appears again.

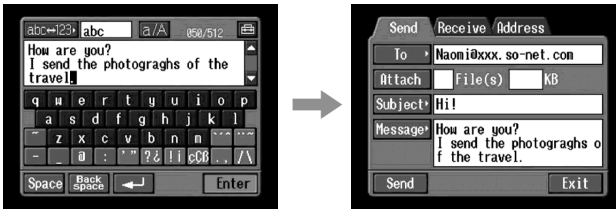
When you edit the message:

Go to step 5.

- (5) Tap [Edit].
The character input screen appears.



- (6) Edit the message.
For details on how to input characters, see “How to input characters” (p. 9).
- (7) Tap [Enter].
The Send screen appears again.



Using email

Attaching images to email

You can send images by attaching them to email messages.

Before operation

- Insert the “Memory Stick” that the desired images are stored in into your camcorder.
- Release that lock of the “Memory Stick”.

- (1) Follow these procedures: “**1** Specifying the destination address” (p. 56), “**2** Entering the subject of a message” (p. 59), and “**3** Entering the text of a message” (p. 60).

The Send screen appears.



- (2) Tap [Attach].

The images recorded on the “Memory Stick” are displayed.



- (3) Tap the desired images.

The selected image is indicated by the checkmark (✓).



To page up or down the index list

Tap [←] or [→]. The next or previous page is displayed.

Using email

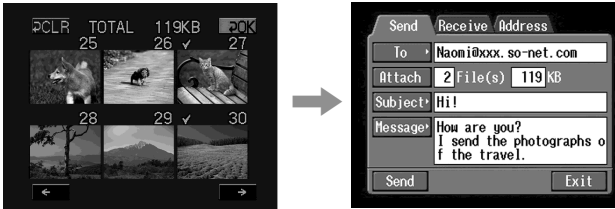
- (4) Repeat step 3 to select other images that you want to attach.

Note

The total number of images you can attach is 99, and the maximum file size is up to total 3 MB.

- (5) Tap [↩ OK].

The Send screen appears again. The total number of selected images and total file size are indicated.



To cancel selecting image

Tap the image again. The checkmark will disappear from the image.

To cancel selecting all the images

Tap [↩ CLR].

- (6) Carry out the procedure described in “4 Sending email” (p. 61) from step 3.

Note

It takes a lot of time to send images depending on the image file size.

Attaching your signature to a message

You can attach your signature to the last column of the email message.

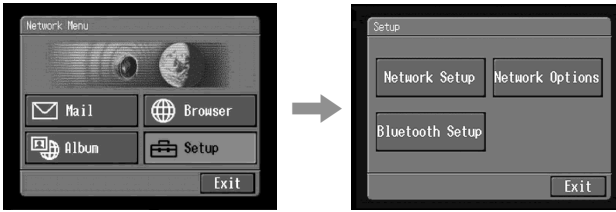
- (1) Open the Network Menu.

For details on how to open the Network Menu, refer to “Accessing the network” in the operating instructions supplied with your camcorder.

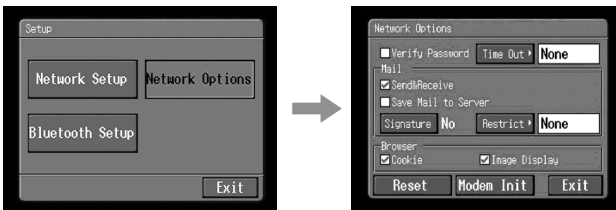


Using email

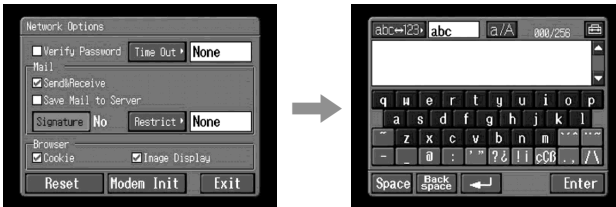
- (2) Tap [Setup].
The Setup screen appears.



- (3) Tap [Network Options].
The Network Options screen appears.



- (4) Tap [Signature].
The character input screen appears.



- (5) Enter your signature.
For details on how to input characters, see "How to input characters" (p. 9).

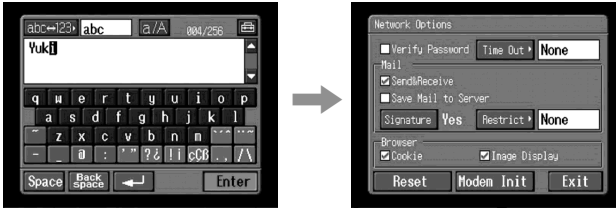
Note

The maximum number of characters you can enter is 256.

Using email

- (6) Tap [Enter].

The setup of your signature is completed, and the Network Options screen appears again. “Yes” is indicated next to [Signature].



- (7) Tap [Exit].

The Setup screen appears again.

- (8) Tap [Exit].

The Network Menu appears again.

Using the address book

Once you register frequently used email addresses in the address book, you can send email without entering the email address manually.

Registering destination addresses in the address book

You can register frequently used email addresses in the address book. You can register up to 50 addresses. Be careful to enter the address correctly.

- (1) Open the Network Menu.

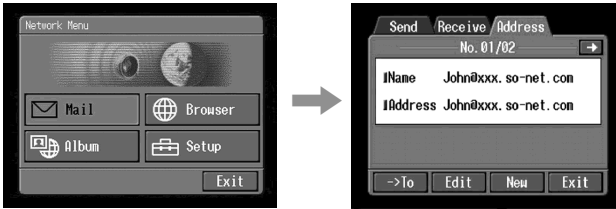
For details on how to open the Network Menu, refer to “Accessing the network” in the operating instructions supplied with your camcorder.



Using email

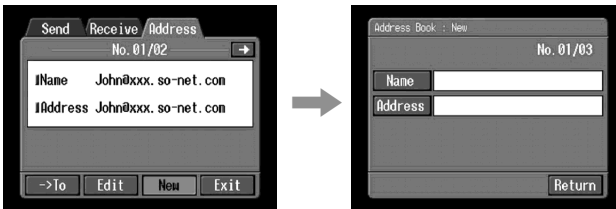
- (2) Tap [✉ Mail].

If the Address screen is not displayed, tap [Address]. The address screen appears.



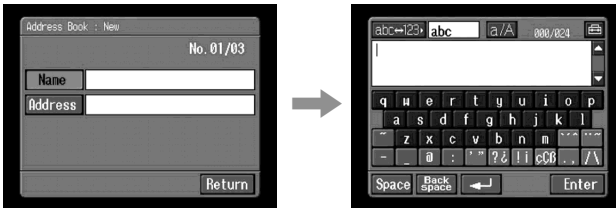
- (3) Tap [New].

The Address Book: New screen appears.



- (4) Tap [Name].

The character input screen appears.



- (5) Enter the destination name.

For details on how to input characters, see “How to input characters” (p. 9).

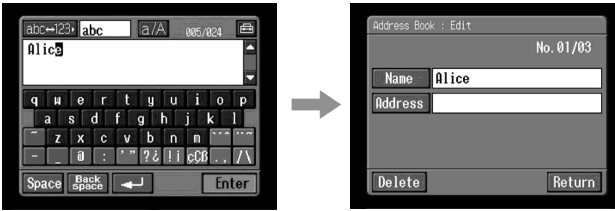
Note

The maximum number of characters you can enter in the [Name] box is 24.

Using email

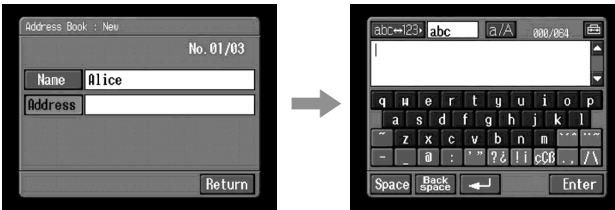
- (6) Tap [Enter].

The Address Book: New screen appears again.



- (7) Tap [Address].

The character input screen appears.



- (8) Enter the email address.

For details on how to input characters, see “How to input characters” (p. 9).

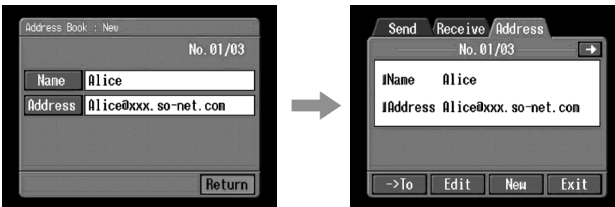
- (9) Tap [Enter].

The Address Book: New screen appears again.



- (10) Tap [Return].

The Address screen appears again.



Using email

- (11) Tap [Exit].
The Network Menu appears again.

Tips

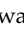

- The addresses are listed in alphabetical order.
- When you reply to the address of a previously received email message, the address will be automatically registered on the address book. To edit the address, see “Editing or deleting the address book” below.

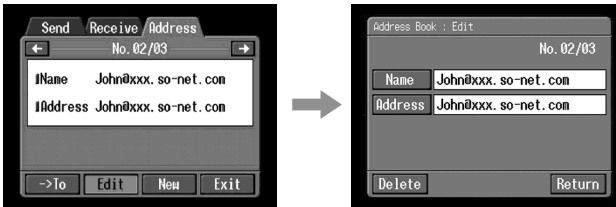
Editing or deleting the address book

You can edit or delete the names or email addresses in the address book.

- (1) Follow steps 1 and 2 in “Registering destination addresses in the address book” (p. 67).
The Address screen appears.



- (2) Display the address you want to edit or delete by tapping  or .
- (3) Tap [Edit] to select the address.
The Address Book: Edit screen appears.

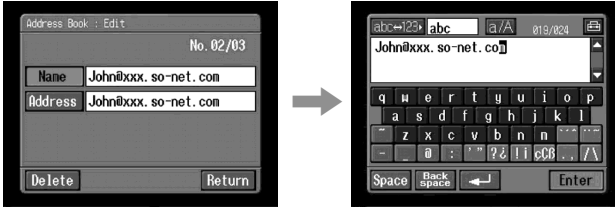


Using email

- (4) Tap [Name] or [Address].

When editing the registered name, tap [Name], and when editing the registered address, tap [Address].

The character input screen appears.



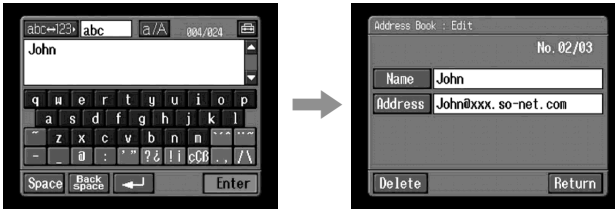
When you want to delete an address, tap [Delete]. When verification appears, tap [OK]. When you stop deleting, tap [Cancel].

- (5) Edit the name or address.

For details on how to input characters, see “How to input characters” (p. 9).

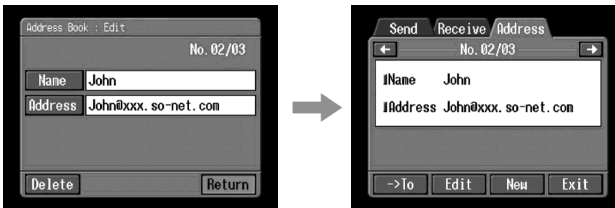
- (6) Tap [Enter].

The Address Book: Edit screen appears again.



- (7) Tap [Return].

The Address screen appears again.



- (8) Check the name or address.

- (9) Tap [Exit].

The Network Menu appears again.

Using email


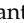
Selecting the destination address from the address book

You can select the destination address from the address book.


- (1) Follow steps 1 and 2 in “Registering destination addresses in the address book” (p. 67).

The Address screen appears.

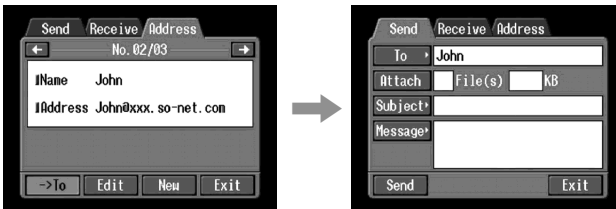


- (2) Select the address you want to send a email by tapping  or .



- (3) Tap .

The Send screen appears. The selected address is set as the destination address.



- (4) Carry out the procedures described in “**2** Entering the subject of a message” (p. 59).

Using email

Receiving email

Once you receive email, you can reply to it or forward it.

Before operation

- Insert a “Memory Stick” into your camcorder, for storing images.
- Release the lock of the “Memory Stick.”

Checking your email inbox

Tip

You can keep copies of your messages on your server even if you download the message using your camcorder. For details, see “Setting other preferences” (p. 40).

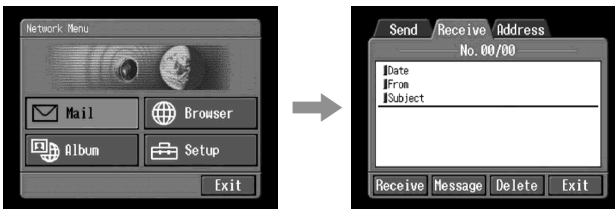
(1) Open the Network Menu.

For details on how to open the Network Menu, refer to “Accessing the network” in the operating instructions supplied with your camcorder.



(2) Tap [✉ Mail].

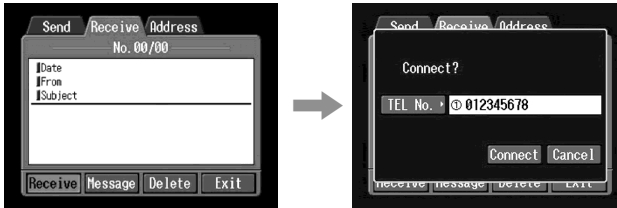
If the Receive screen is not displayed, select the Receive from the Send, Receive and Address. The Receive screen appears.



(3) Tap [Receive].

The screen for verifying the connection appears.

Set your Bluetooth device to connection standby with your camcorder beforehand. For details, refer to the operating instructions supplied with your Bluetooth device.



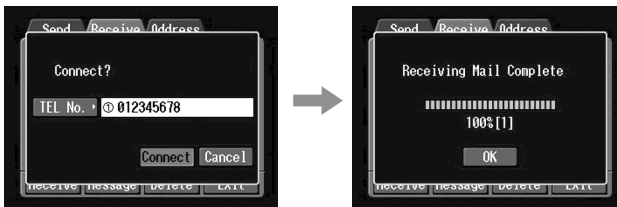
(4) Check the telephone number.

When dialing other telephone numbers

Tap [TEL No.]. The registered telephone number list appears. Tap the desired telephone number. The selected telephone number is specified.

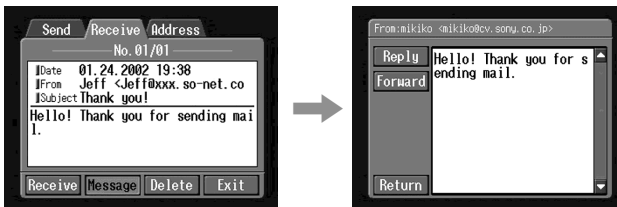
(5) Tap [Connect].

Your camcorder starts dialing the selected telephone number. When an email message has been sent to you, your camcorder download it, and the message "Receiving Mail Complete" appears. Tap [OK]. The phone line is automatically disconnected after email is received.



(6) When an email message has been received, tap the area where a message is displayed or [Message].

The message is displayed.



(7) Tap [Return].

The Receive screen appears again.

To cancel receiving email

While downloading, tap [Cancel]. Email you don't receive remains on your server.

When the message is long

Tap the scroll button ▼ to scroll the message.

When a file is attached to an email message

Your camcorder can receive the following extension file: **.jpg**, **.mpg**, **.jpeg**, and **.mpeg**. When you receive other types of files, the message "Attached Invalid File Deleted" is inserted in the email message. Your camcorder cannot play back the attached image if the file is in an incompatible format.

To view an attached image

Exit the NETWORK mode, then view the image following the same procedure as that for viewing an image recorded in a "Memory Stick." In such cases, the attached file will be stored next to the last-recorded image recorded in VCR or MEMORY/NETWORK mode.

When no new messages have been sent to you

The message "No New Mail" appears.

URL included in an email message

When a URL ("http://...") is typed in the message, tap the URL. The browser starts automatically and accesses the indicated web page.

Notes

- The maximum number of email message characters allowed is 4 000. More than that number of characters will cause the excess characters to be deleted and a message indicating that some of the text was deleted is attached to the beginning of the message.
- It takes a lot of time to receive the message depending on the attached image file size.

Tips

- You can automatically check the email inbox after sending email. For details, see "4 Setting other preferences" (p. 40).
- You can skip an email message if its file size is too large. For details, see "4 Setting other preferences" on (p. 40).
- For email messages, the maximum number of characters used for the subject and the sender name has an upper limit of 24 characters. When you receive an email message with more than 24 characters in these items, you cannot read the subject and the sender name on your camcorder.

Using email

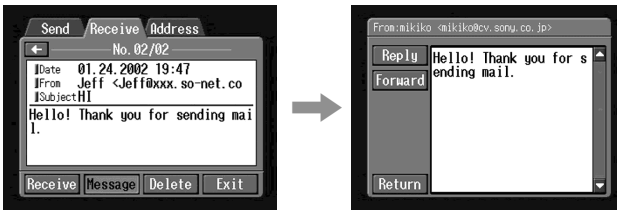
Sending your answer – Reply

You can quickly reply to an email message without entering the address.

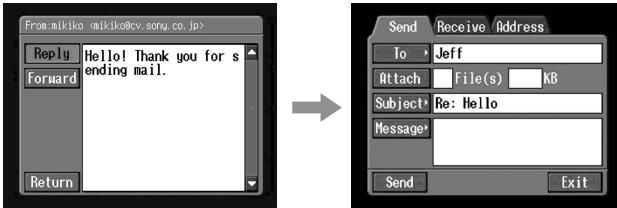
- (1) Display the Receive screen.



- (2) Tap the area where a message is displayed or tap [Message]. The selected message is displayed.



- (3) Tap [Reply]. The Send screen appears.



Tip

“Re:” is added to the beginning of the subject line.

- (4) Carry out the procedure described in “3 Entering the text of a message” (p. 60) to enter the text of the message.

Tip

You cannot quote a received email message.

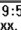
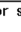
- (5) Carry out the procedure described in “4 Sending email” (p. 61) from step 3.

Forwarding the message to others – Forward

You can forward a downloaded message to others.

- (1) Display the Receive screen.



- (2) Display email you want to forward the message by tapping  or .
- (3) Tap the area where a message is displayed or tap [Message].
The selected message is displayed.



- (4) Tap [Forward].
The Send screen appears.



Tips

- An attached file is not automatically forwarded. When you want to send the attached file, see “Attaching images to email” (p. 64).
- “Fw:” is added to the top of the subject line.

- (5) Carry out the procedure described in “**1** Specifying the destination address” (p. 56) from step 3 or “Selecting the destination address from the address book” (p. 72) to specify the destination address.

Using email

- (6) Carry out the procedure described in “**3** Entering the text of a message” (p. 60) to modify the message.

Tip

The maximum number of characters you can enter in a message is 512. The characters over that number will be deleted.

- (7) Carry out the procedure described in “**4** Sending email” (p. 61) from step 3.

Deleting unnecessary email

You can store up to 50 received email messages in a “Memory Stick.” If you try to receive a 51st email message, an error message appears and your camcorder cannot receive the email message.

Before operation

- Insert the “Memory Stick” that the email message you want to delete is stored in into your camcorder.
- Release the lock of the “Memory Stick.”

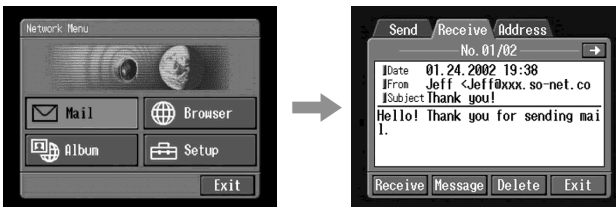
- (1) Open the Network Menu.

For details on how to open the Network Menu, refer to “Accessing the network” in the operating instructions supplied with your camcorder.


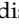


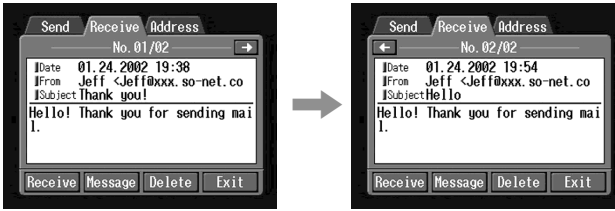
- (2) Tap [✉ Mail].

If the Receive screen is not displayed, select the Receive from the Send, Receive and Address. The Receive screen appears.

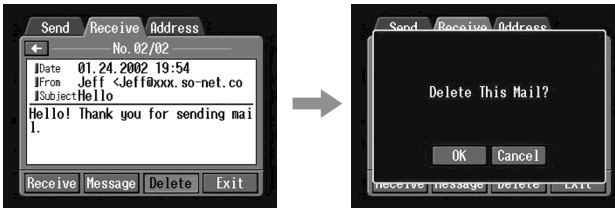


Using email

- (3) Display email you want to delete the message by tapping  or .
- The selected message is displayed.



- (4) Tap [Delete].
- The message "Delete This Mail?" used for verification appears.



- (5) Tap [OK].
- The selected email message is deleted.

To cancel deleting email

Tap [Cancel] in step 5.

Viewing web pages

A site that posts information on the Internet is called “web page” or “web site”. You can easily retrieve information by accessing a web site on the Internet.

Viewing web pages

1 Entering the URL needed to access the web page

Enter the address of the web page, and then access the Internet. Be careful to enter the address correctly.

Tip on URL

A web site has a unique address on the Internet. The address is called a URL. This URL is required to access a web site.

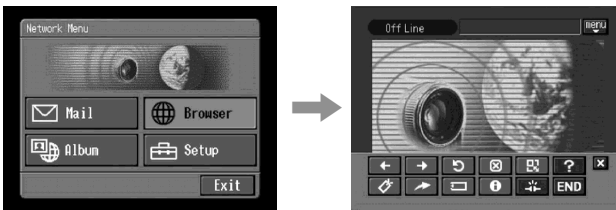
(1) Open the Network Menu.

For details on how to open the Network Menu, refer to “Accessing the network” in the operating instructions supplied with your camcorder.



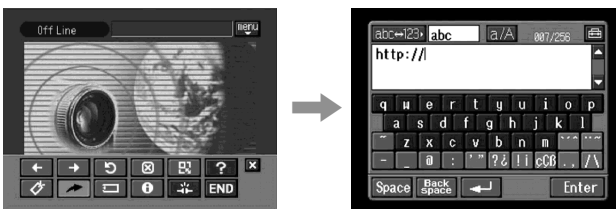
(2) Tap [⊕ Browser].

The following screen appears.



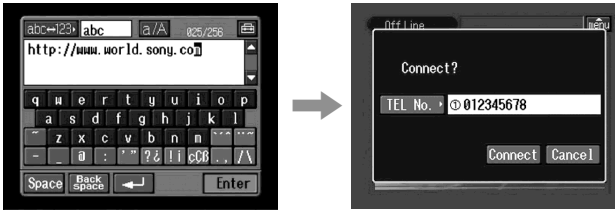
(3) Tap [↗] (New URL).

The character input screen appears.

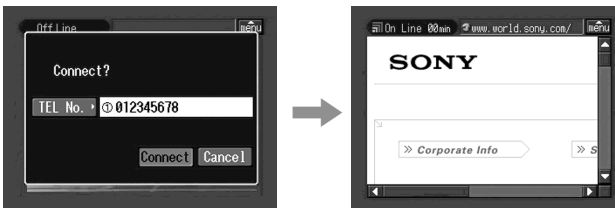


Viewing web pages

- (4) Enter the URL.
For details on how to input characters, see “How to input characters” (p. 9).
- (5) Tap [Enter].
The screen used for verifying the connection appears. Set your Bluetooth device to connection standby with your camcorder beforehand. For details, refer to the operating instructions supplied with your Bluetooth device.



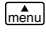
- (6) Check the telephone number.
When dialing other telephone numbers
Tap [TEL No.]. The registered telephone number list appears. Tap the desired telephone number. The selected telephone number is specified.
- (7) Tap [Connect].
Your camcorder starts dialing the selected telephone number. After the connection is completed, the web page selected in step 4 is loaded.



- (8) Operate the browser using the menu bar.
For details on the menu bar, see “How to use the menu bar on the browser” (p. 82).


Viewing web pages

How to use the menu bar on the browser

When you access the Internet and view a web page, you can carry out various operations using the menu bar. While the browser screen is displayed, tap  on the upper-right LCD screen to display the menu bar.

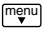



To show the menu bar





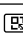
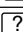







- (1) Tap  on the upper-right LCD screen. The following menu bar appears.



To hide the menu bar

Tap  or  in the menu bar again. The menu bar disappears.

The buttons on the menu bar

Button	Function
 (Previous Page)	Go to the previous page in your step.
 (Next Page)	Go to the next page in your step.
 (Refresh)	Refresh the current page. Use this button when images or characters on the web page are not displayed properly.
 (Stop)	Stop loading the current page.
 (Zoom)	Change the page size.
 (Help)	Display the introduction of each button.
 (Bookmark)	Bookmark the current page. (Bookmarks are stored in the camcorder.) Bookmarking is convenient to access frequently-visited pages.
 (New URL)	Enter the URL of a web page.
 (Page Memo)	Store the current page in the "Memory Stick." You can then view the page without accessing the Internet.
 (Page Information)	Show the title and URL of the current page.
 (Line Close)	Disconnect the phone line.
	Hide the menu bar.
 (End)	Exit the browser.

When you fail to load a web page

[Loading Error] message appears. Tap [OK], then tap  on the upper-right LCD screen, and tap  in the menu bar. Network Menu appears again.

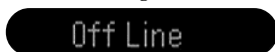
Note

The buttons may not function, depending on the accessed web page.

Note on connection status indication

The connection status is indicated on the top of the screen. This item also shows a connected time and the address of the web page. The connecting time indication should be used as a guide.

Off Line: being offline




Loading: Loading a web page



On Line: being online



Notes

- When the address is too long to display, the whole address is not indicated. If you want to know the correct address of the page, tap . The address is indicated in full.
- A portion of the whole page is displayed on the screen.
- It takes more time to load a large size page, and its images or text may not be displayed properly. This is not a malfunction.
- When you try to open a large size page, the message "Data too Large for Full Display" appears and the entire page may not be loaded.
- When viewing a scaled-down page, the screen may show some flicker or the colour may be strange. This is not a malfunction.
- To prevent a malfunction, operate the menu bar buttons after loading the page.

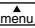
Tip

You can access the web page from a bookmark. For details, see "**3** Jumping to the web page specified by the bookmark" (p. 87).

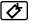
Viewing web pages

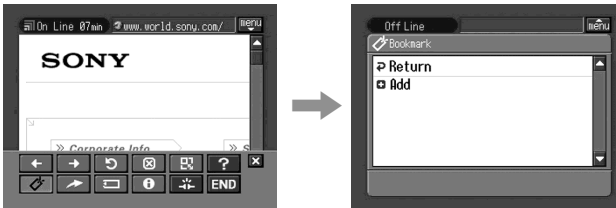
2 Bookmarking the web page – Bookmark


You can bookmark web pages you frequently access. You can bookmark up to 30.

- (1) Display the web page you want to bookmark.
- (2) When the menu bar is not displayed, tap  on the upper-right LCD screen. The menu bar appears.



- (3) Tap  (Bookmark). The bookmark list appears.



- (4) Tap  Add]. The bookmark is added, and the display returns to the web page.




Note

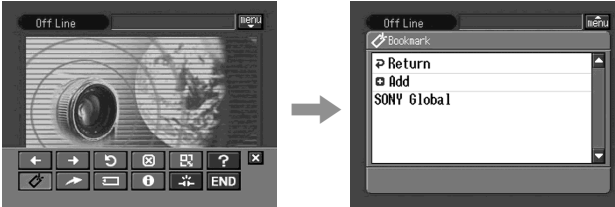
- The phone line may not be disconnected automatically. If this happens, disconnect the phone line manually (p. 93).
- You cannot bookmark a web page that the URL is more than 256 characters.

Viewing web pages

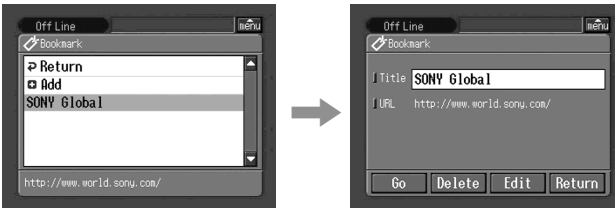
To edit a bookmark

You can edit the title of a bookmark.

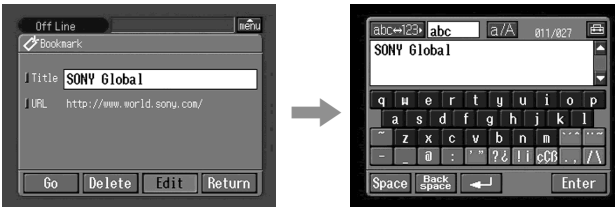
- (1) Tap  (Bookmark).
The bookmark list appears.



- (2) Tap the bookmark you want to edit.
The title and URL are indicated.

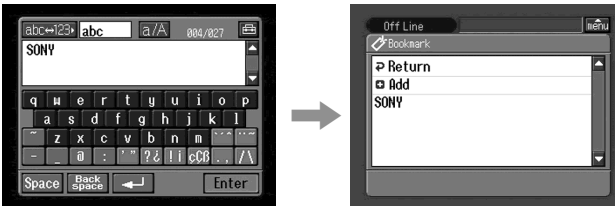



- (3) Tap [Edit].
The character input screen appears.



- (4) Edit the name.
For details on how to input characters, see “How to input characters” (p. 9).


- (5) Tap [Enter].
The title of the bookmark is modified.



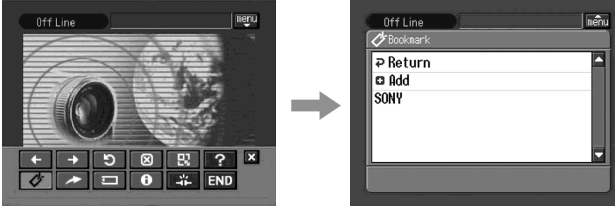
- (6) Tap [ Return].
The Browser screen appears again.

To delete bookmarks

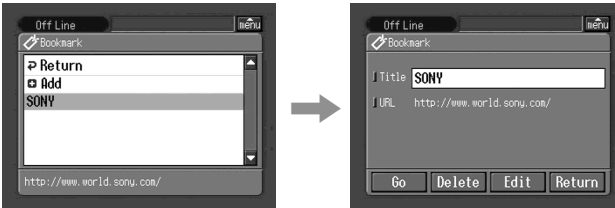
You can delete bookmarks. We recommend that you delete unnecessary bookmarks since you can only store up to 30 bookmarks.

- (1) Tap  (Bookmark).

The bookmark list appears.



- (2) Tap the bookmark you want to delete.



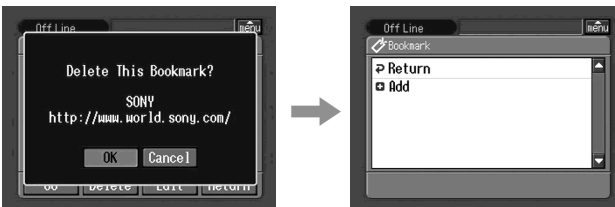
- (3) Tap [Delete].

The message "Delete This Bookmark?" used for verification appears.



- (4) Tap [OK].

The selected bookmark is deleted.

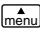


To cancel deleting the bookmark


Tap [Cancel] in step 4.

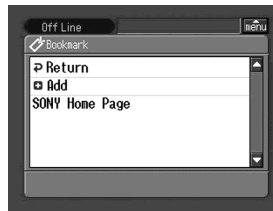
Viewing web pages

3 Jumping to the web page specified by the bookmark

- (1) When the menu bar is not displayed, tap  on the upper-right LCD screen. The menu bar appears.



- (2) Tap  (Bookmark). The bookmark list appears.



- (3) Tap the bookmark.

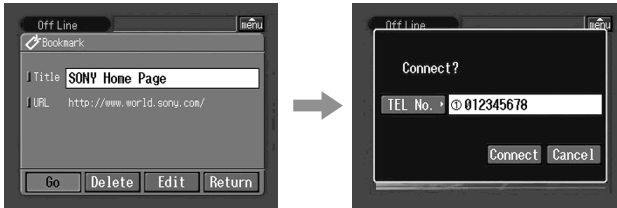


Viewing web pages

(4) Tap [Go].

The screen used for verifying the connection appears.

Set your Bluetooth device to connection standby with your camcorder beforehand. For details, refer to the operating instructions supplied with your Bluetooth device.



(5) Check the telephone number.

When dialing other telephone numbers

Tap [TEL No.]. The registered telephone number list appears. Tap the desired telephone number. The selected telephone number is specified.

(6) Tap [Connect].

Your camcorder starts dialing the selected telephone number. After the connection is completed, the web page specified by the bookmark is displayed.

To select other bookmark

Tap [Return] in step 4. The bookmark list appears. Tap other bookmark.

Storing the web page into a "Memory Stick" – Page Memo

You can store your favorite web pages in a "Memory Stick." Once you store them, you can view the web page without accessing the Internet.

You cannot store a web page that the URL is more than 256 characters.


Storing the web page into a "Memory Stick"

You can store up to 30 page memos in a "Memory Stick."


Before operation

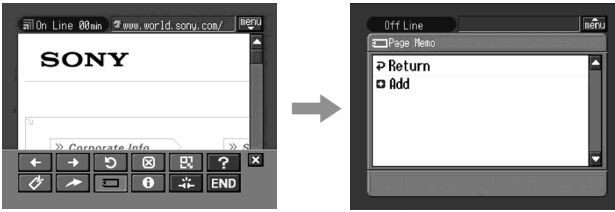
- Insert a "Memory Stick" into your camcorder, for storing web pages.
- Release the lock of the "Memory Stick."


(1) Display the web page you want to store.

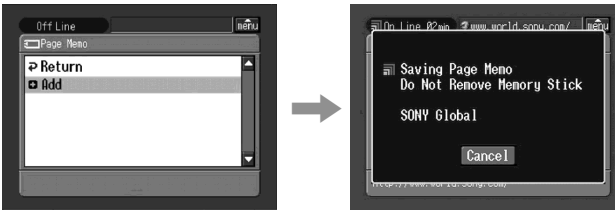
(2) When the menu bar is not displayed, tap  on the upper-right LCD screen. The menu bar appears.

Viewing web pages

- (3) Tap  (Page Memo).
The page memo list appears.



- (4) Tap  Add].
The message "Saving Page Memo Do Not Remove Memory Stick" appears.
After the message disappears, storing is complete.



- (5) The browser screen appears again.

To cancel storing the web page

During storing, tap [Cancel].

Note

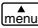
You cannot store the web page while loading it.

Editing the title of a page memo

You can edit the title of a page memo stored in a "Memory Stick."

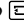
Before operation

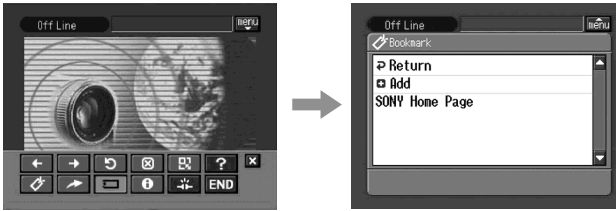
- Insert a "Memory Stick" that the page memo you want to edit is stored in into your camcorder.
- Release the lock of the "Memory Stick."

- (1) When the menu bar is not displayed, tap  on the upper-right LCD screen.
The menu bar appears.

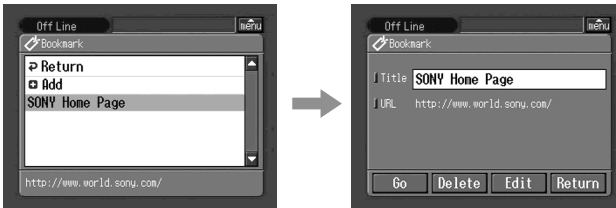


Viewing web pages

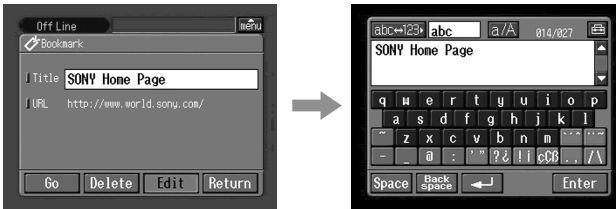
- (2) Tap  (Page Memo).
The page memo list appears.



- (3) Tap the page memo you want to edit.
The title and URL of the selected page memo are indicated.

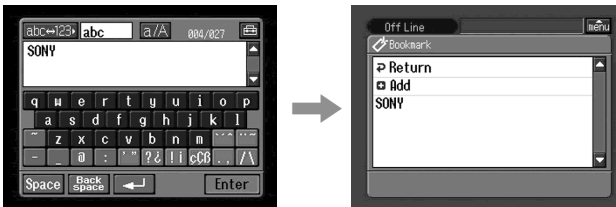


- (4) Tap [Edit].
The character input screen appears.



- (5) Edit the name.
For details on how to input characters, see "How to input characters" (p. 9).

- (6) Tap [Enter].
The title of the page memo is edited.



Viewing web pages

- (7) Tap [ Return].

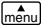
The browser screen appears again.

To delete the page memo


You can delete page memos. We recommend that you delete unnecessary page memos since you can only store up to 30 page memos.

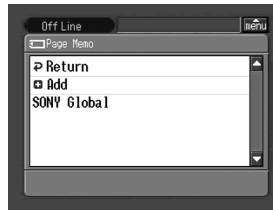
Before operation

- Insert a “Memory Stick” into your camcorder, for storing page memos.
- Release the lock of the “Memory Stick.”

- (1) When the menu bar is not displayed, tap [ menu] on the upper-right LCD screen.
The menu bar appears.



- (2) Tap [ (Page Memo)].
The page memo list appears.



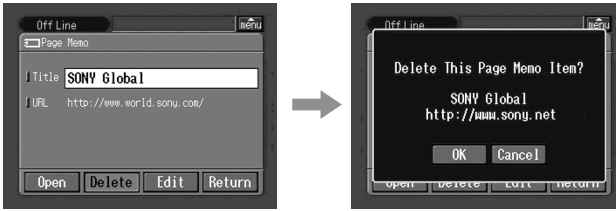
- (3) Tap the page memo you want to delete.
The following screen appears.



Viewing web pages

- (4) Tap [Delete].

The message "Delete This Page Memo Item?" used for verification appears.



- (5) Tap [OK].

The selected page memo is deleted and the page memo list appears again.

- (6) Tap [Return].

The browser screen appears again.

To cancel deleting the page memo

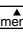
Tap [Cancel] in step 4.

Displaying a web page stored in page memo


You can display a page memo stored in a "Memory Stick."

Before operation

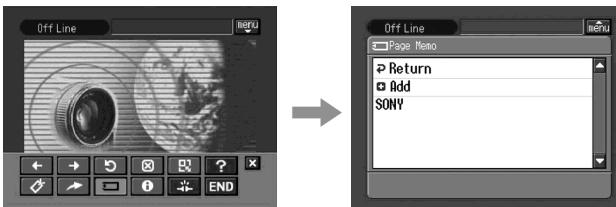
- Insert the "Memory Stick" that the page memo you want to display is stored in into your camcorder.
- Release the lock of the "Memory Stick".

- (1) When the menu bar is not displayed, tap  on the upper-right LCD screen. The menu bar appears.



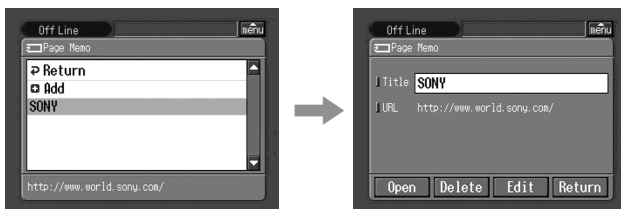
- (2) Tap  (Page Memo).

The page memo list appears.



Viewing web pages

- (3) Tap the page memo you want to display.



- (4) Tap [Open].
The web page stored in page memo is displayed.

To select other page memo

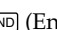
Tap [Return] in step 3. The page memo list appears. Tap other page memo.

Shutting down the browser


To finish viewing the web page, and disconnect the phone line

- (1) Tap  on the upper-right LCD screen to display the menu bar.



- (2) Tap  (End).
The browser is closed, then the phone line is disconnected.

To only disconnect the line

Tap  (Line Close). The phone line is disconnected.

Note

When shutting down the browser, a verification message may appear, depending on your camcorder.

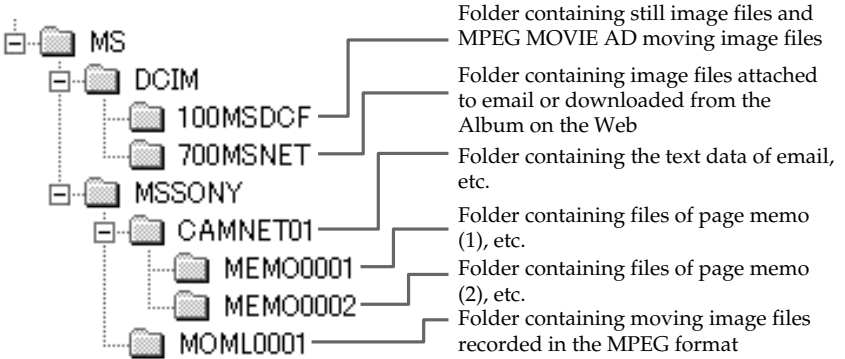
File storage destinations and file names

Files are grouped in the following folders. You can only view these folders on a computer. The meanings of the file names are as follows.

□□□□□ stands for any number within the range from 00001 to 99999.

□□□□ stands for any number within the range from 0001 to 9999.

○○○ stands for a portion of an attached file name.



Folder	File name	Meaning
100MSDCF	DSC□□□□□.JPG	Still image file
	MOV□□□□□.MPG	Moving image file
700MSNET	○○□□□□□.JPG	Still image file over the network
	○○□□□□□.MPG	Moving image file over the network
CAM NET01	RCV.MBX	Incoming email list*
	IMAGEMEM.CNF	Page memo management file*
MEMO□□□□	MEMO□□□□.HTM	Page memo HTML file
	IMG□□□□.JPG	Page memo still image file
	IMG□□□□.GIF	Page memo image file
	IMG□□□□.PNG	Page memo image file
	IMG□□□□.XBM	Page memo image file
MOML0001	MOV□□□□□.MPG	Moving image file

* Do not delete these files. These are required files even though they cannot be verified using a PC.

Troubleshooting

Trouble accessing the Internet

The message "...Incomplete" or "Authentication Error..." is indicated and your camcorder cannot access the Internet.

- **When setting network preferences using the "So-net" option**
Check your setup according to the procedure described in "Setting network preferences" (p. 32).
- **When setting network preferences using the custom setup**
Check your setup according to the procedure described in "3 Setting your provider preferences manually" of "Setting network preferences" (p. 37).

The camcorder cannot access the Internet.

- Try to access it again after a while.

The message "Line is Busy or Phone number may be Wrong" is indicated and your camcorder cannot access the Internet.

- The phone line of your provider is busy. Call again after a while.
- The settings for the telephone number may be incorrect. Please check those settings.
- The telephone signaling type setup of the Modem Adaptor with Bluetooth function may be wrong. Check the setup.

The message "Bluetooth Connection Error" is indicated and your camcorder cannot access the Internet.

- Check that the Bluetooth device is turned on.
- Install the Bluetooth device nearer to your camcorder.

The message "Phone Line Disconnected" is indicated.

- Data entry can be done offline. When the camcorder needs to connect with the site, the screen for verifying the connection appears. Tap [Connect], then the connection will be established again.

The message "Bluetooth Authentication Error Check the Certified Status" is indicated and your camcorder cannot access the Internet.

- The Bluetooth device may be deleted from the registration. Set it up again.

The message "Bluetooth Connection Error Select Bluetooth Device" is indicated and your camcorder cannot access the Internet.

- Check your setup according to the procedure described in "Registering a Bluetooth device" (p. 20).

The message "Low Battery" is indicated and your camcorder cannot access the Internet.

- Charge the battery pack or use the AC power adaptor, then connect again.

You forget your Login name (ID) and/or password.

- Please contact Sony Contact Center Europe (see the supplied leaflet).

Troubleshooting

Trouble with email

The message “DNS Error The Requested URL Could Not Found” is indicated and your camcorder cannot send or receive email.

- **When setting network preferences using the custom setup**
The DNS setup may be wrong. Check the PPP setup.

Your camcorder cannot send email.

- The clock setting of your camcorder is not set. Set up the clock setting.
- **When setting network preferences using the “So-net” option**
Check your setup according to the procedure described in “Setting network preferences” (p. 32).
- **When setting network preferences using the custom setup**
Check your setup according to the procedure described in “**3** Setting your provider preferences manually” of “Setting network preferences” (p. 37).
- Connect again after a while.

Your camcorder cannot receive email.

- The clock of your camcorder is not set up. Set it up.
- **When setting network preferences using the “So-net” option**
Check your setup according to the procedure described in “Setting network preferences” (p. 32).
- **When setting network preferences using the custom setup**
Check your setup according to the procedure described in “**3** Setting your provider preferences manually” of “Setting network preferences” (p. 37).
- All of your downloaded email messages are stored in the “Memory Stick.” Insert a new “Memory Stick” that has sufficient memory and download your email again. Also, check that the lock switch is set to release.
- You can restrict the file size of downloaded email messages. Check the setup of the item “Restrict” on the Network Options screen.
- Up to 50 downloaded email messages can be stored in a “Memory Stick.” If you want to store a 51st email message, delete unnecessary email or insert a new “Memory Stick” that has sufficient memory and then download your email again.

All of the email message cannot be received.

- The maximum size of an email is 4 000 characters. You cannot receive the entire text of email that has more than 4 000 characters.

The message “PPP Authentication Error” is indicated.

- **When setting network preferences using the “So-net” option**
Check your setup according to the procedure described in “Setting network preferences” (p. 32).
- **When setting network preferences using the custom setup**
Check your setup according to the procedure described in “**3** Setting your provider preferences manually” of “Setting network preferences” (p. 37).

You received an email message sent from Mailer Daemon.

- Your email has not been sent to its destination address. Check the email address. If you receive an email message from Mailer Daemon and the destination address is correct, the server may be down, or the email address may have changed.

Troubleshooting

Attached files are not saved in the "Memory Stick."

- Compatible file types are **.jpg**, **.mpg**, **.jpeg** and **.mpeg** only. Check the file type.
- The message "Memory Stick Directory Error" may be indicated when a "Memory Stick" whose directory structure does not correspond to the DCF standard is inserted.
- All of your downloaded email messages are stored in the "Memory Stick." Insert a new "Memory Stick" that has sufficient memory and download your email again. Also, check that the lock switch is set to release.
- You can restrict the file size of downloaded email messages. Check the setup of the item "Restrict" on the Network Options screen.

Trouble viewing web pages

The images are not displayed.

- Check the setup of the item "Image Display" on the Network Options screen.

Some of the web page or all of the web page is not displayed.

- When the page has been made using the software, such as Macromedia Flash, the page does not correspond to the browser of your camcorder.

It takes some time to load the web page.

- When the web page is busy, try to connect through other providers or other access points, or connect during off-peak times.

The web page is not loaded.

- **When entering its URL**
Check that the address is correct. (For example, did you enter "0" or "O", "-" or "_")
- **When accessing through the bookmark or page memo**
The address may have been changed or the link structure of the web site may have been modified. When the link structure is modified, follow the address to its source. (For example, when you cannot access "http://www.sony.co.jp/xxxx/", then try to access "http://www.sony.co.jp/")

The web page cannot be displayed.

- The item "Cookie" may not be checked. Check the item "Cookie" on the Network Options screen.

The cookie is not saved.

- Exit the NETWORK mode, the cookie will be deleted.

The message "DNS Error The Requested URL Could Not Found" is indicated and the web page is not displayed.

- The setup of the item "DNS" may be wrong. Check the setup of the PPP screen.
- The setup of the item "Proxy" may be wrong. Check the setup of the Browser screen.

Troubleshooting

Troubles about the Album on the Web

The message "DI customer ID Profile Incomplete" is indicated and your camcorder cannot access the album on the Web.

- The Login name (ID) is required to use the Album on the Web.


You cannot view or edit your album, send an invitation card, or upload images. (An error code is indicated.)

- See "Album error codes" (p. 103).


It takes some time to load the album.

- When the web site is busy, try to connect through other providers or access points, or connect during off-peak times.

The image cannot be deleted.

- There may be no images. Tap  (Refresh).

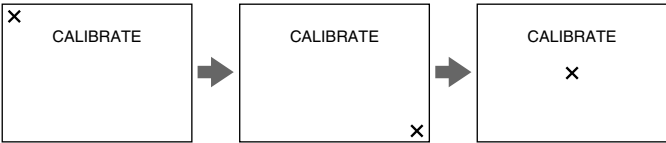
The image cannot be downloaded.

- There may be no images. Tap  (Refresh).

Adjusting the LCD screen (CALIBRATION)

The buttons on the touch panel may not work correctly. If this happens, follow the procedure below.

- (1) Set the POWER switch to OFF (CHG).
- (2) Eject the cassette from your camcorder, then disconnect any connecting cable from your camcorder.
- (3) Set the POWER switch to VCR while pressing DISPLAY/TOUCH PANEL on your camcorder, then keep pressing DISPLAY/TOUCH PANEL for about five seconds.
- (4) Follow the procedure below using the stylus supplied with your camcorder.
 - ① Touch **X** at the upper left corner.
 - ② Touch **X** at the lower right corner.
 - ③ Touch **X** in the middle of the screen.



Note

If you do not tap the right spot, **X** always returns to the position at the upper left corner. In this case, start from step 4 again.

Specifications

Bluetooth

The number of registered devices available

3

Album on the Web

The number of albums

10

The maximum number of images uploaded at one time

99

The maximum file size of images uploaded at one time

3 MB

Email

Sending

The maximum number of email destination addresses to which a message can be sent at one time

50

The registrable number of subjects

6

The maximum number of characters of a subject

24

The registrable number of messages

6

The maximum number of characters of a message

512

The maximum number of images attached to email

99

The maximum file size of images attached to email

3 MB

Signature

The number of characters

256

Address book

The registrable number of destination addresses

50

The maximum number of characters of a name

24

The maximum number of characters of an email address

64

Receiving

Compatible attachment file standards

Extension: .jpg, .mpg, .jpeg, .mpeg

The maximum number of characters of an email message

Approx. 4 000

The maximum number of email messages recordable in a "Memory Stick"

50

Browser

The number of bookmarks available

30

The maximum number of characters of a bookmark title

27

The maximum number of page memos recordable in a "Memory Stick"

30

The maximum number of characters of a page memo title

27

The maximum number of characters of URL

255

Messages

Various messages appear on the screen. Check the corresponding descriptions in the following list.

General

Message	Cause and/or Corrective Actions
Bluetooth Connection Error	<ul style="list-style-type: none"> • The Bluetooth device is too far from the camcorder. • The Bluetooth device is busy.
Bluetooth Authentication Error Check the Certified Status	Register the Bluetooth device again.
Bluetooth Registration Error Check the Passkey	<ul style="list-style-type: none"> • The passkey was wrong. • The passkey transmission failed.
Bluetooth Communication Disconnected	<ul style="list-style-type: none"> • The Bluetooth device was turned off. • The Bluetooth device is too far from the camcorder. • The Bluetooth device became impossible to connect.
Bluetooth Connection Error Select Bluetooth Device	No Bluetooth devices are registered. Register the Bluetooth device (p. 20).
PPP Authentication Error Check ID or Password	Your ID or password entered on the PPP screen during manual setup may be wrong.
Phone Line Disconnected	Check the connection status.
Connection Error No Response From PPP Server	<ul style="list-style-type: none"> • The telephone number entered on the PPP screen in manual setup may be wrong. • The setup of Modem unit on the Network Options screen is wrong.
Bluetooth Connection Error Check Phone Line	Check that the Bluetooth device is connected to a telephone terminal.
Low Battery	The capacity of the battery pack is insufficient. Change the battery pack or use the AC power adaptor.
Profile Error Reset Profile	Check the setup. If an entry is missing, set up again referring to your notes.
DI customer ID Profile Incompleted * Password Already Set Check the Password Profile	Check your Login name (ID) or password entered on the Network Setup screen. For details on "Verify Password," see "Setting other preferences" (p. 40). You cannot use your album on the Web if you set your preferences manually.
Memory Error	Exit the NETWORK mode, then enter the NETWORK mode again.
Memory Stick Error	The "Memory Stick" may be broken. Do the following; exit the NETWORK mode, turn off the camcorder, remove and insert the "Memory Stick", then operate the camcorder. If the message still appears, use another "Memory Stick".
Memory Stick Error Outgoing Mail Canceled	
Memory Stick Error Unable to Open the File	
Memory Stick Error Action Canceled	
Memory Stick Error Incoming Mail Canceled	
Memory Stick Format Error	Format the "Memory Stick" with your camcorder.

Messages

Message	Cause and/or Corrective Actions
Enter Password for DI Customer ID	For details on "Verify Password", see "Setting other preferences" (p. 40).
Enter PPP Password	
Saving the Profile	Do not turn off the camcorder while the message is indicated.

Album on the Web

Message	Cause and/or Corrective Actions
Album Server Disconnected	Try again after a while.
Upload Error	
Outgoing Mail Error Select Pictures	Select the image or set up the invitation card before uploading (p. 45).
Wrong File Unable to Save This File Check the File Type	You tried to download a file that is not in the JPEG or MPEG format. You can download only JPEG or MPEG files.
Memory Stick Directory Error	You tried to download a file to a "Memory Stick" whose directory structure does not conform to the DCF standard. You cannot download a file to a "Memory Stick" not conforming to the DCF standard.
No Picture Files	There are no images in the "Memory Stick".

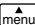
When an 4-digit error code is indicated, see "Album error codes" (p. 103).

Email

Message	Cause and/or Corrective Actions
POP Server Disconnected	The POP server may be down. Connect to the page again after a while.
POP Server Connection Error	<ul style="list-style-type: none">• Your password entered on the Mail screen during manual setup may be wrong. Check your password.• Connect the page after a while.
SMTP Server Disconnected	Connect to the page again after a while.
SMTP Server Connection Error	Your password entered on the Mail screen during manual setup may be wrong. Check your password.
PPP Profile Incomplete	Check the Setup or custom setup in provider preferences.
Mail Profile Incomplete	Check the Setup or custom setup in provider preferences.
No Picture Files	No images in the "Memory Stick".

Messages

Browser

Message	Cause and/or Corrective Actions
You are About to View Pages Over a Secure Connection Do You Want to Continue?	You tried to open an SSL page. When you know that the page is safe, tap [OK].
You are About to Leave a Secure Internet Connection Do You Want to Continue?	
Warrant Date Expired Invalid Data Open Anyway?	
Set the Date and Time Invalid Data Open Anyway?	The clock is not set up on your camcorder. Set up the clock setting.
Page Certification Error Invalid Data Open Anyway?	The certification of the page may be broken, wrong, or it may be of other pages. When you know that the page is safe, tap [OK].
Opening Error Invalid File Type	You cannot display this page on your camcorder.
DNS Error The Requested URL Could Not Found	<ul style="list-style-type: none"> • The URL may be wrong. • The DNS entry on the PPP screen during manual setup may be wrong. Check this item. • Connect to the page again after a while.
Loading Error	Tap  on the upper-right LCD screen, then tap [END].
Read-Only File in Directory Unable to Delete the File Check the File Status	Files modified with a computer may not be deleted by the camcorder.
Opening File Error	
Read-Only File This File is Locked	
Enter User Name and Password	User authentication is required to access the page. Enter your user name and password.
Timeout Disconnected Automatically	Check the Network Options setup (p. 40).
Loading... Retry Later	The page memo cannot be stored while the unit is loading a web page. Store it again after the web page has been loaded (p. 89).

Album error codes

Error Number	ImageStation	Cause	Corrective Actions
1000	Authentication error occurred. Please check ID and Password.	Login error. ID or password may be incorrect on your camcorder.	Check your ID and password, and try to login again.
1001	Upload error occurred. Please try to upload again later.	Error in finding album.	Check your selection and try again.
1002	Your ID is not registered. Please register.	ID is not registered.	Try to register the Album on the Web.
1003	Upload error occurred. Please try to upload again later.	There was an error in saving the file in the album.	Try uploading the file again.
1004	Invitation error occurred. Please try to send again later.	The email address you are trying to send is invalid.	Check the email address and try again.
1006	Invitation error occurred. Please try to send again later.	There is no message in the invitation.	This error should not occur. Call Customer Support if you see this message.
1007	Upload error occurred. Please try to upload again later.	There is an error with the image file in the album.	Check the selected images and try again.
1008	Error occurred. Please re-enter Album.	Login error. Not logged into album.	Check your ID and password, and try to login again.
1009	Upload error occurred. The uploaded image was too large.	The image is too large to upload.	The image cannot be uploaded. Remove it from your selection.
1010	Upload error occurred. Please check the image file.	Unable to read the image format.	The image cannot be uploaded. Remove it from your selection.
1112	Authentication error occurred. Please check ID and password.	Login error	Check your ID and password, and try to login again.
2100	Your message could not send. Please send again.	The server is unable to send now.	Try to send email again after a while.
2200	The server is temporarily busy. Please try again later.	The authentication server is temporarily busy.	Try to send email again after a while.
3094	Upload error occurred. Please check the image file.	Unable to read the video format.	The file cannot be uploaded. Remove it from your selection.
3099	Upload error occurred. The uploaded video was too large.	The video is too large to upload.	The video cannot be uploaded. Remove it from your selection.
3131	Upload error occurred. The total size limit of video is over.	You have exceeded the video storage limit.	Delete some of the other video(s) in your albums and try to upload again.
6000	Your ID validity is expired. Please login again.	The server validity time is expired.	Try to login again.
8025	Authentication error occurred. Please re-enter Album.	Login error	Check your ID and password, and try to login again.

Glossary

Access point (p. 36, 38)

A telephone number used to access the Internet, which is provided by an Internet service provider.

Most providers install access points in various areas. We recommend that you select the most convenient access point which allows you to obtain the lowest telephone charges.

Address book (p. 67)

Used to register email destination addresses.

APOP (p. 39)

APOP is an authentication protocol for security. When your provider supports APOP, we recommend that you check this item. For more information on whether the provider support APOP or not, consult your provider.

@ (At mark)

Used to separate the domain name and the user name.

Attachment (p. 64)

To attach a file to an email message.

Connect time (p. 83)

The time for being connected with an Internet service provider using a dial-up connection. Most Internet service providers charge for the time connected.

Cookie (p. 41)

Used by the operator of an Internet site to identify the user. This is frequently used in online shopping.

Dial-up connection (p. 36, 38)

The dial-up connection is used to access the Internet using a phone line.

DNS (p. 38)

An abbreviation for Domain Name System. This "DNS" is also referred to as a "name server," "primary DNS server," "primary name server," etc. This is a server that replaces a domain name with an IP address. This is specified by an IP address.

Download

Load information from the server through the phone line.

Email (p. 56)

Also referred to as "Email", "Mail", etc. Using a network, such as the Internet, you can send and receive a message very quickly. Email is easy to edit or store.

Email address (p. 38)

Also referred to as an "Email address", "Mail address", etc. This is the destination address for email. There is no need to specify the country and the house number. The same address does not exist in the world. You can receive your email even if you are in another country.

Forward (p. 77)

To forward a received email message to another person. "Fw:" (Forward) is added to the beginning of the title in order to indicate that the email is a forwarded email.

ID (p. 38)

Used to identify the user in combination with a password when accessing the Internet through the Internet service provider.

Glossary

Internet (p. 30)

A worldwide network of computers. You can use email, information retrieval services, etc., over this network.

Internet service provider (p. 30)

Also referred to as a "Provider," an "ISP," etc. A company that provides access to the Internet.

Link

A related page address listed on a Web page as a Web link.

Password (p. 32, 38)

Used to access the provider in combination with a user ID.

POP3 (p. 39)

An abbreviation for Post Office Protocol, Version 3. This is a server used to receive email.

PPP (p. 37)

An abbreviation for Point to Point Protocol, Version 3. This is a protocol for accessing a provider using a dial-up connection.

Proxy (p. 39)

A server or program to make a computer located inside a firewall pass through the firewall.

Reply (p. 76)

To reply to a previously received email message. When replying, "Re:" (Reply) is added to the beginning of the title in order to indicate that the email is a reply.

Signature (p. 65)

Used to add your name, your address, etc., to the end of a message.

SMTP (p. 39)

An abbreviation for Simple Mail Transfer Protocol. This is a server used to send email.

SSL

An abbreviation for Secure Sockets Layer. A protocol for exchanging information safely between web browsers and web servers. SSL is frequently used for credit card transactions over the Internet. SSL also has a function to verify ownership and to encrypt data.

Subject (p. 59)

The title of an email message. When replying, "Re:" (Reply) is added to the beginning of the title in order to indicate that the email is a reply. When forwarding an email message, "Fw:" (Forward) is added to the beginning of the title in order to indicate that the email is a forwarded email message.

URL (p. 80)

An abbreviation for Uniform Resource Locator. An address on the Internet. By specifying this address, you can access the web page.

Web page (p. 80)

A web site that makes information available on the Internet. When the page includes Web links, you can specify other pages by selecting the link.

Setup memo

Be careful not to reveal these entries.

Network Menu

Network Setup		
DI Customer Setup		Example
ID (Login name)	_____	_____
Password	_____	_____
Provider Setup		
So-net		
TEL ①	_____	XXXXXXXX
TEL ②	_____	
TEL ③	_____	
Custom		
PPP		
ID	_____	abc123@xxx.so-net.com
Password	_____	hcHZ7yd
DNS1	_____	192.168.0.1
DNS2	_____	192.168.0.2
TEL No. ①	_____	XXXXXXXX
TEL No. ②	_____	
TEL No. ③	_____	
Mail		
User ID	_____	abc123
Password	_____	hcHZ7yd
Address	_____	abc123@xxx.so-net.com
POP Server	_____	pop.xxx.so-net.com
SMTP Server	_____	smtp.xxx.so-net.com
Browser		
Proxy	_____	proxy.xxx.so-net.com
Port	_____	8080

<http://www.sony.net/>

Printed on recycled paper

Sony Corporation Printed in Japan

