

## looking for a taker

The centrepiece of AIBO's artificial intelligence is the AIBO Mind 3 software, located on a removable Memory Stick. This controls AIBO's behaviour and the applications that you can use via a PC or a mobile device equipped with e-mail access.

AIBO has artificial instincts to move around, look for its toys, satisfy its curiosity, play and communicate with its owner. AIBO's personality develops by interacting with people, and according to its different experiences.



A 128 MB Memory Stick integrates all applications and enables AIBO to behave autonomously as well as benefit from PC-based applications.



Technical Specifications	
<b>Dimensions</b>	180 (W) x 278 (H) x 319 (D) mm
<b>Weight</b>	Approx. 1.6kg (including battery and Memory Stick)
<b>CPU</b>	64bit RISC Processor
<b>CPU Clock Speed</b>	576MHz
<b>Memory (SDRAM)</b>	64MB
<b>Program Storage Media</b>	128MB AIBO Memory Stick
<b>Wireless LAN Card</b>	IEEE 802.11b (Integrated)
<b>Media</b>	Memory Stick slot In/Out

Supplied Accessories	
AIBO MIND 3 (software Memory Stick), WLAN Manager 3 & AIBO Entertainment Player Ver.2.0 (CD), Energy Station, Energy Station pole, AC adapter, Lithium ion battery pack ERA-7B2, pink ball, AIBOne, AIBO cards, documentation.	

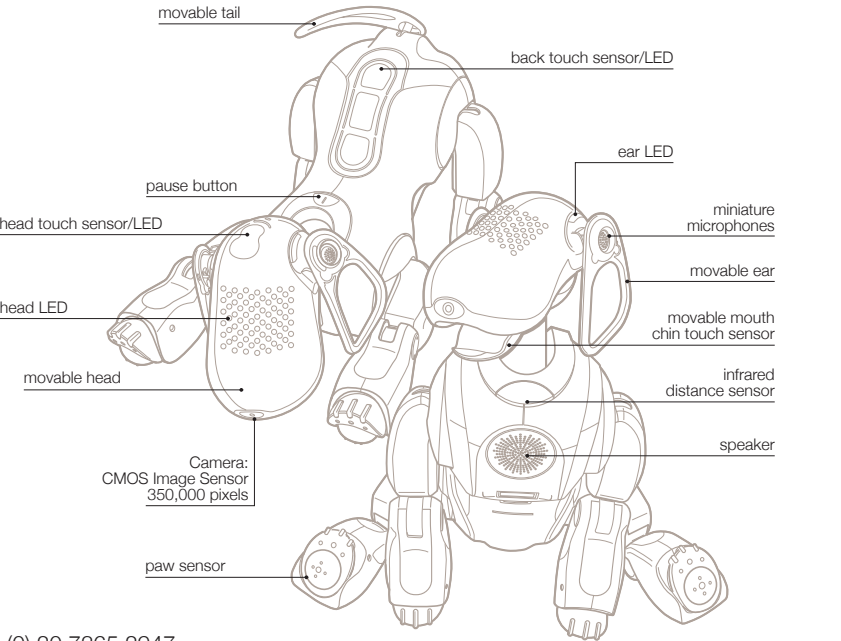


For more information, please ask in-store. Alternatively visit our website [www.eu.aibo.com](http://www.eu.aibo.com) or call us on: +44 (0) 20 7365 2947

© 2005 Sony Entertainment Robot Europe. All rights reserved. Sony, AIBO, VAIO, Memory Stick and their logos are trademarks of Sony Corporation, Japan. Features and specifications are subject to change without notice. Wireless LAN can only be used in the countries listed below. In those in bold, some limitations apply on the use of the product. AT, BE, CH, DE, DK, ES, FI, **FR**, GR, IE, **IT**, **LU**, **NL**, NO, PT, SE, UK. Sony disclaims any liability or responsibility for any typographical errors in this brochure. Sony Entertainment Robot Europe, a division of Sony Service Centre (Europe) N.V., The Corporate Village, Da Vincklaan 7 D-1, B-1935 Zaventem, Belgium. ©, October 2005.

Expressing	
<b>Miniature Speaker:</b>	20.8mm, 500mW, with volume switch
<b>64 Polyphonic Sound Chip</b>	
<b>Emotional Face Lights</b>	
<b>Illume Face:</b>	24 LED (white 12, red 4, blue 4, green 4)
<b>Ear:</b>	2 (left and right)
<b>Head Sensor:</b>	2 (white and amber)
<b>Head:</b>	1 (blue: wireless LAN on/off)
<b>Back Sensor:</b>	16 (white 8, red 3, blue 3, orange 2)

Feeling	
<b>Temperature Sensor</b>	
<b>Acceleration Sensor</b>	
<b>Electric Static Sensor:</b>	head, back
<b>Pressure Sensor:</b>	chin, paws (4)
<b>Vibration Sensor</b>	



AIBO touches your heartstrings, wirelessly.



SONY

like.no.other™

# AIBO MIND 3

## a mind to explore

The fascinating AIBO concept is part of the very conscious ambition from Sony to create intelligent companions for people. To achieve this, a groundbreaking vision to combine Sony flagship technologies with Artificial Intelligence was pursued.

The result: a unique companion, gradually adapting itself to your environment, capable of expressing emotion, very skilful and with an inherent desire to entertain. **AIBO will win your heart and entertain your mind.**



AIBO Cards offer an alternative way of communicating visually with AIBO. These cards allow it to be given several instructions including 'Dance' or 'Take a picture'.







By simply showing a CD cover AIBO will play programmed tracks from it.

## mover and shaker

AIBO enjoys music and it will play your favourite music on demand. AIBO plays internet radio, CDs and MP3s through your PC. Being a natural performer, AIBO loves to dance. Give the voice commands "Dance to the music" or "Groove to the music" and AIBO will listen to nearby music and dance along in sync.



A gentle stroke on AIBO's "touch" sensors will trigger an adorable response.

## opinion maker

Your AIBO's personality and moods will change depending on the relationship it has with you and its environment.

Thanks to a highly expressive face and body, communicating with AIBO and understanding its feelings becomes second nature. Turning its head when spoken to, it rewards you with its full attention. AIBO recognises and responds to your voice, name and facial expressions and will come over to greet you the moment it's aware of your presence.

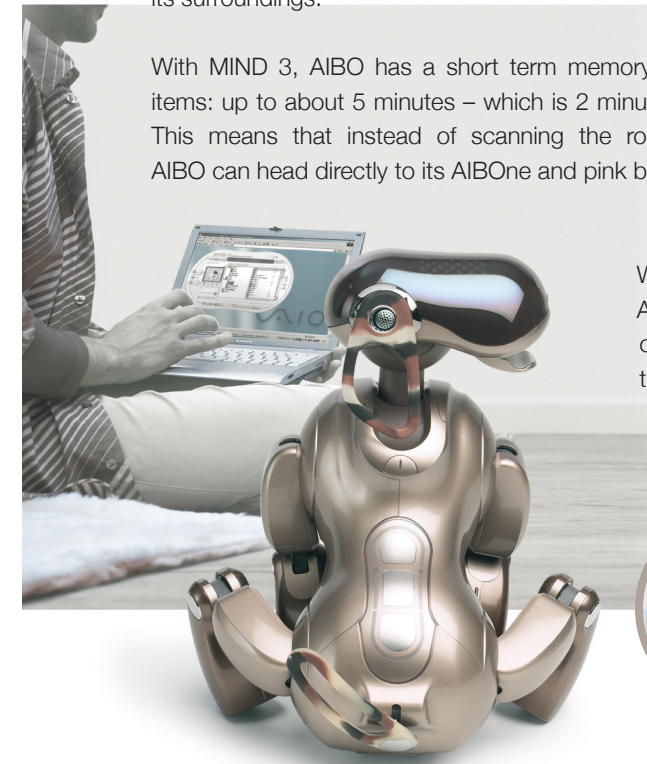


Multi-colour LEDs allow AIBO to express emotions and what it is thinking.

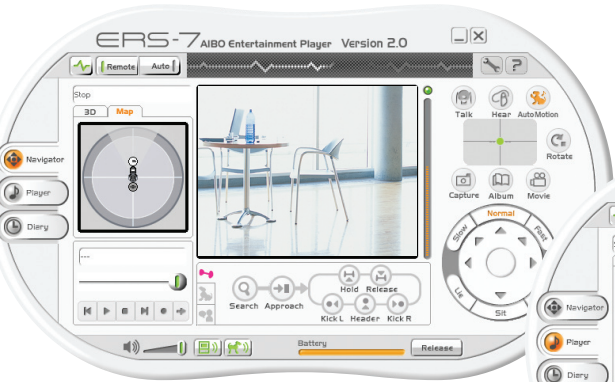
## expert navigator

With the Navigator interface you can instruct AIBO wirelessly from your PC to great performances. In navigator you can see what AIBO has in its surroundings.

With MIND 3, AIBO has a short term memory of the location of its items: up to about 5 minutes – which is 2 minutes more than goldfish. This means that instead of scanning the room for visual patterns, AIBO can head directly to its AIBOne and pink ball or its energy station.



You can send an email instruction to AIBO asking it to take a picture and send it back to a mobile telephone equipped with e-mail access.

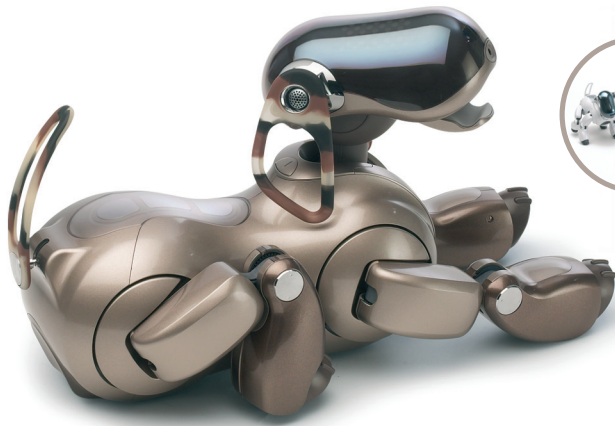


## news breaker

AIBO records the days topics from its own perspective, with photos, and adds comments based on how it feels to the diary on AIBO Entertainment Player. Befitting a true denizen of the global Internet community, AIBO's diary can be transferred to an online blog.

AIBO's inquisitive mind knows no boundaries. Eager to enlighten as well as entertain, AIBO reads out the news content from your favourite websites, using RSS feeds.

In House Sitting mode, AIBO takes pictures or records sounds from the Energy Station in response to moving objects, faces, or sounds. When it detects a movement, face or sound, you can set it to snap a picture and notify you by e-mail.



AIBO locates autonomously its energy station when its energy is dropping. The pattern on the Energy Station Pole helps AIBO to localise and position itself quickly.