

The World Leader in  
Thin Client Management & Industrial Mobility Solutions

# ThinManager Platform 8

# ThinManager

## Platform 8

ThinManager is a simplified delivery system of centralized applications and information to virtually any device.

### THINMANAGER DELIVERS

ThinManager allows you to easily manage the configuration of end-user terminals and the delivery of all your centralized applications and content to those terminals.

### THINMANAGER PROVIDES EASE OF USE

ThinManager's wizard-based configuration allows administrators to easily set up advanced functionality for end-user devices such as PCs, thin clients and mobile devices. ThinManager also makes it easy to customize the content delivered to the terminal based on who is logged in and what role they play in your work environment.

### THINMANAGER IS A COMPLETE SOLUTION

ThinManager is the only platform that manages both the server side and the terminal side of modern computer networks offering full server failover and redundancy options to keep your resources in an "always on" state, reducing downtime and lowering your Total Cost of Ownership.

## What's New in Platform 8

- Support for Android
- Active Directory Integration
- Increased Security
- Unprecedented Control
- Less Expensive Hardware
- Familiar Apps & Tools
- Mobile Solution



## Client Apps

ThinManager has tools that allow non-client devices to be managed as thin clients.



### Apple iOS Mobile Client iTMC

Configuring Apple mobile devices as a thin client is just as easy to set up as a regular desktop terminal with ThinManager. *Requires iOS 5.1 or higher.*

### Android OS Mobile Client DroidTMC

Configuring DroidTMC as a thin client is just as easy to set up as a regular desktop terminal with ThinManager. *Requires KitKat 4.4, an auto-focus camera & Bluetooth 4.0 BTLE.*

### Operate Your PC Like a Thin Client WinTMC

You can now use ThinManager functions such as SmartSession, MultiSession, AppLink, Instant Failover, and other features on your Windows PC. You can also manage all of your networked PCs directly from ThinManager. Administrators can use ThinManager's shadowing capability to remotely view and control the PC's desktop even when the user does not have an active session. You can also allow a user to switch between local applications and RDS applications. WinTMC allows users to benefit from existing hardware, then replace PCs with thin clients as needed.

# RELEVANCE

ThinManager Relevance provides mobile environments the ability to deliver the right applications to the right person at the right time & place.



## Applications and information can now be delivered based on location.

Relevance extends your ability to manage every device by bringing a powerful mobile administration toolset to the award-winning ThinManager thin client management platform. Applications and information can now be delivered based on location. This will allow your staff the option to have information automatically become available on mobile devices upon entering an area or scanning an ID. Then, upon leaving the area, the information will be removed from the screen or hidden unless accessed by an authorized user.

Other features include the ability to share screen information with other devices based on proximity or login. Now an administrator can see the same screen on his mobile device that a technician is accessing on a computer without having to look over the shoulder or walk across the plant. The access can be view only or interactive.

ThinManager Relevance is ultrasecure as all data is stored on secure central servers and no data is saved locally. If a device is lost or stolen, no information or administrative paperwork is compromised.

## Relevance Resolvers



QR CODE



NFC



BLUETOOTH



WIFI



GPS

Use Relevance Resolvers to define locations and securely deliver applications to mobile devices.

Relevance uses five different kinds of location resolver technologies to allow you to completely define your workspace as a location-based mobile facility. Once you have defined locations, you can deliver applications and content to PCs, thin clients and mobile devices based on where they are located. This allows administrators to secure tethered workstations and mobile devices by delivering applications and content only to specific areas where that content is allowed to be accessed.

Location setup and configuration are easily managed using the ThinManager Relevance wizard-based setup tools. Administrators have full control over how locations and users are defined so that every person who interacts with the system only receives the content they are authorized to access.

Extra security can be easily employed by creating geofences. Geofences can be configured by combining two resolver technologies such as WIFI and QR codes. For instance, by nesting a QR code within a specific WIFI access point, administrators can deliver content when that code is scanned from within the WIFI access point and take away and/or deny access to the content when a person leaves the WIFI access point. Other resolver technologies can be combined to create geofences as well.

# Running with MultiSession

delivery management :::

MultiSession is the core technology that makes ThinManager the “go-to” solution for access to applications and content from multiple sources.



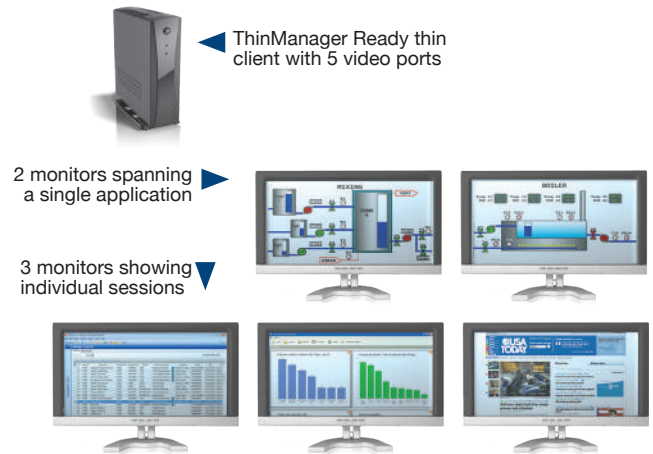
ThinManager’s MultiSession feature allows administrators to deliver applications and resources from various sources such as Remote Desktop Servers (terminal servers), VMWare, Hyper-V and even Citrix servers to virtually any end-user device. ThinManager creates a unique session for each terminal and/or user authorized to access a centralized application.

MultiSession easily manages these sessions allowing end users to have access to multiple applications through a single terminal. Users no longer have to worry with applications that compete for resources on a single PC or working on more than one PC at a time to compensate for power hungry programs. ThinManager can deliver everything you need through a single terminal.

# Increase visualization with MultiMonitor

Up to 5 monitors with touchscreen support.

Span a single session across monitors, display a different session on each monitor, or present a combination of the two.



MultiMonitor allows ThinManager users to display up to five screens on a single thin client. MultiMonitor can be used to span sessions across monitors and/or run individual or multiple sessions on each monitor. Touchscreens are also supported.

Users can place monitors at any location within the virtual space and can even combine spanning and multiple sessions on a single thin client. Users can use two adjacent monitors to span a single session while two other monitors are each used to display sessions running on other servers. Wizards make configuring all of the screens a snap.

MultiMonitor supports spanned resolutions up to 8192 x 8192 with 64K colors for MS Server 2012 and newer. MS Server 2008 and prior are limited to a spanned resolution of 4096 x 2048.

# How it works...

**Simplified delivery of centralized applications and information to virtually any device.**

Get unparalleled flexibility for your computer networks by centrally managing every thin client, PC and mobile device from one powerful software platform.

ThinManager provides a set of management tools that go beyond your current capabilities and a feature set that will make things you already do a whole lot easier.

# ThinManager Platform 8

## What's New?

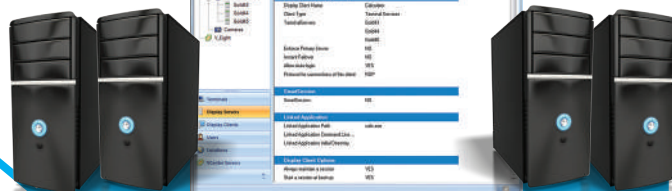
- Support for Android
- Active Directory Integration
- Increased Security
- Unprecedented Control
- Less Expensive Hardware
- Familiar Apps & Tools
- Mobile Solution



✓ Compatible with RDS, Hyper-V, Citrix & VMware



- Access multiple sessions and use multiple monitors on a single thin client.



Remote Desktop Servers

Virtual Resources



- Includes support for IP camera feeds.



- Manage and deliver virtual desktops while running PCs as thin client devices.



- Access applications based on what is assigned to the workstation or the user.

Deliver existing applications to any device!

- Deliver content to the right person at the right time & place.



- Get mobile access to applications specific to your role.

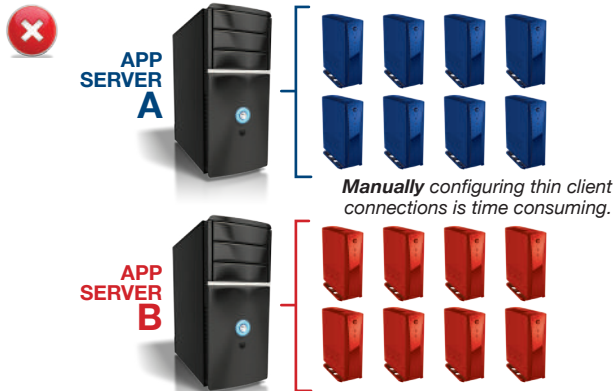
RELEANCE

# Built with SmartSession Technology

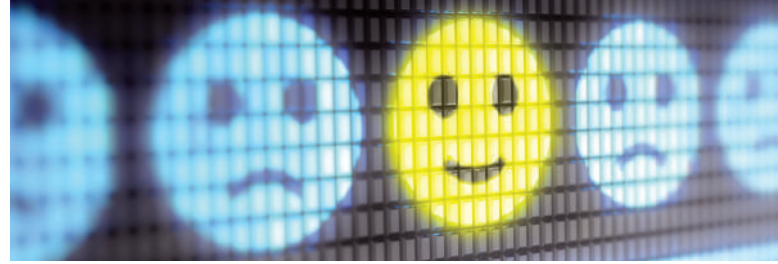
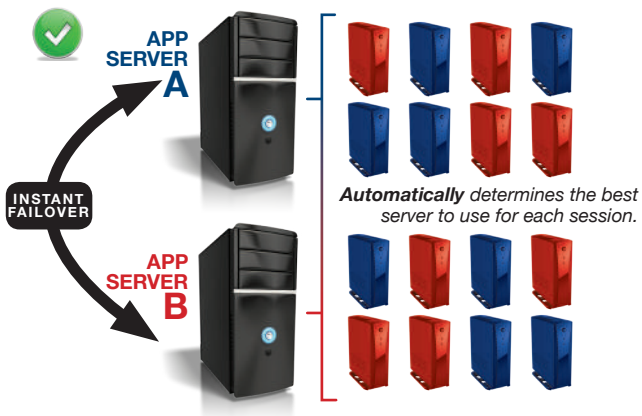
server management :::

SmartSession determines the best server for each client session. Instant Failover runs sessions on a secondary server(s) to prevent downtime from server failure.

## Without SmartSession



## With SmartSession



As resources are used, SmartSession decides where to assign TERMINALS to keep the Remote Desktop Servers running at peak efficiency.

So you have numerous thin clients in your medical facility running important applications. These applications require multiple Remote Desktop Servers to support all of your thin clients. How do you decide which clients connect to which Remote Desktop Services servers? Why not let ThinManager decide for you?

When you use the SmartSession feature, you add the power of load balancing. Rather than manually configuring your clients to connect to one server or another, let ThinManager decide, in real time, exactly which terminal server is most available. SmartSession takes differing CPU levels, memory levels, and current session information into account to calculate the best server for your next client session.

If you add clients and require more server power to support them, simply drop another Remote Desktop Server onto your SmartSession group and it will be balanced with the others and ready to receive client sessions. Now there are no more complicated configurations to manage.

Use the queuing feature to minimize the server stress and disk trashing that can occur when many clients try to start sessions on a server simultaneously. Queuing brings clients on in an orderly fashion and keeps your systems running smoothly.

### Instant Failover

ThinManager also provides the added safety of instant server failover. If a server does go offline, ThinManager immediately switches all clients to the backup without interruption.

# Control Terminal/Application Access

## TermSecure

Administrator can control terminal/application access with a ThinManager username and password. When your ThinServer is in a domain, TermSecure now integrates with Active Directory so administrators can easily add/sync existing Windows users.

### Assign Applications to Users or Terminals

Assign an application to a user and as they move from terminal to terminal, TermSecure logs them in and instantly reconnects to the existing sessions allowing applications to follow them through the work environment. When the user leaves a terminal, they can be automatically logged out and the client returns to its original function.

Assign an application to a terminal and hide it until an authorized user logs in. Once that user logs off, the application will return to its hidden state.

### Use Multiple Authentication Methods/Devices

Identify yourself at a TermSecure enabled device using an RFID proximity card (short or long range), finger print scanner, a USB flash key, or login manually. Combine authentication methods and greatly increase security.

### Control Terminal Access on a Schedule

Administrators can control user access to terminals and applications through group permissions and terminal scheduling. Limit a specific user to a weekly, daily or hourly schedule.

### Extend Terminal Usability

Drop our ActiveX control into your applications to program in terminal and user specific functionality, including session switching, event logging, and terminal management.



## User Control

The end user can access only the applications and servers that he has been granted.



## Supervisor Control

As the supervisor arrives and badges in, the applications and servers that are granted to him are visible on the terminal.



Provide a safe working environment with

# Camera Support



Our highly customizable program lets users choose the options that best fit their needs. ThinManager now supports H.264 video at 30fps.

## Setup is Easy

Just configure the camera with an IP address to add it to your network, define it as a display server, and then deploy it as a window or as part of a group of windows.

## Multiple Viewing Options

Users have the option to choose a single camera display, several cameras with multiple displays, or as an overlay in an existing application. Users can define their own custom layout of the camera overlays or choose from predefined layouts. ThinManager also allows the ability to choose whether or not the IP camera feeds are to be tiled.

## Manage the Bandwidth

If your thin client is equipped with dual Ethernet ports, it is now possible to directly connect an IP Camera into the 2nd Ethernet port on the thin client. This greatly decreases network activity, instantly freeing up more bandwidth.

## Advantages

IP camera support gives users the ability to see around the corner and through the walls. Use it to expand the line of vision in a production process or as a security tool to monitor every part of a facility at the same time. ThinManager's customizable IP camera support makes it easy to define and deploy a wide variety of readily available cameras.

# ThinManager Licensing

**XLi Standard Licensing** Available in packs of 5, 10 & 25 and includes MultiMonitor, TermSecure, PXE Boot, WinTMC, MultiSession, SmartSession, Virtual Machine Management, iOS Apps, AppLink, Automatic Failover, Instant Failover, Terminal Shadowing, Remote Management, Redundant Ethernet, Touchscreen Support, Shared Keyboard & Mouse and more.

**Enterprise Licensing Server Licensing** includes licenses for 2 ThinManager Servers, providing redundancy at a single location. This allows for an unlimited number of thin clients and terminal servers on a single network.

**Site Licensing** provides a single license that can be installed on an unlimited number of ThinManager Servers at a facility. This license provides for redundancy and departmentalization of ThinManager Servers. Enterprise Site extends the enterprise server licensing to all networks at a single facility.

**Redundancy** ThinManager offers 2 options for redundant servers: **Mirrored Redundancy** synchronizes a pair of servers, one acting as a primary server while the other acts as a "view only" interface. **Full-Redundancy** uses a redundant pair of servers storing configurations on both with a fully accessible ThinManager GUI.

# ThinManager Platform Maintenance

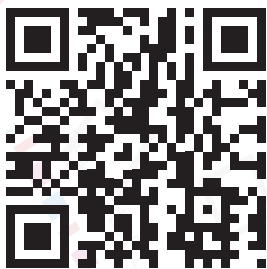
- » **Free Version Upgrades**
- » **Expert Phone Support**
- » **Exclusive Discounts**

The Platform Maintenance Plan offered by ACP is a full-featured plan to ensure that your ThinManager system evolves with your facilities.

Get the most from your investment and stay productive by always having the latest tools.



Scan the QR code to get the latest information on ThinManager & Relevance on your device!



## Automation Control Products

1725 Windward Concourse, Suite 300, Alpharetta, GA 30005 USA

[www.thinmanager.com](http://www.thinmanager.com) | [sales@thinmanager.com](mailto:sales@thinmanager.com) | 1-877-239-4282

Copyright ©2015 Automation Control Products. All Rights Reserved. Created in the USA.