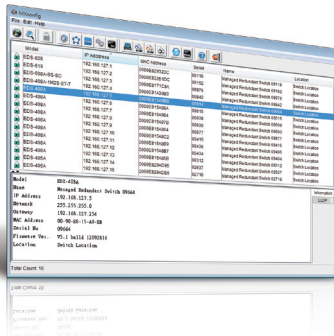


MXconfig

Industrial network configuration tool



- Mass managed function configuration increases deployment efficiency and reduces setup time
- Mass configuration duplication reduces installation cost
- Link sequence detection eliminates manual setting errors
- Configuration overview and documentation for easy status review and management
- Three users privilege levels enhance security and management flexibility

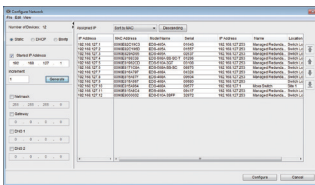
Introduction

Moxa's MXconfig is a comprehensive Windows-based utility that is used to install, configure and maintain multiple Moxa devices in industrial networks. This suite of useful tools helps users set the IP addresses of multiple devices with one click, configure the redundant protocols and VLAN settings, modify multiple network configurations of multiple Moxa devices, upload firmware to multiple devices, export/

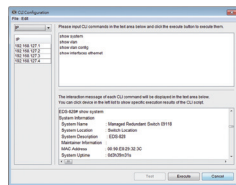
import configuration files, copy configuration settings across devices, easily link to web and Telnet consoles, and test device connectivity. MXconfig gives device installers and control engineers a powerful and easy way to mass configure devices, and effectively reduces the setup and maintenance cost.

Device Discovery and Fast Group Configuration

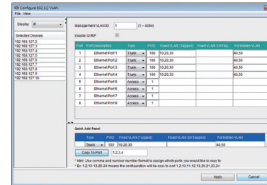
- Easy broadcast search of the network for all supported Moxa managed Ethernet devices
- Mass network setting (such as IP addresses, gateway, and DNS) deployment reduces setup time
- Mass managed functions deployment increases configuration efficiency
- Multiple grouping for easy classification
- User-friendly port selection panel provides physical port descriptions
- VLAN Quick-Add Panel speeds up setup time
- Deploy multiple devices with one click using CLI execution



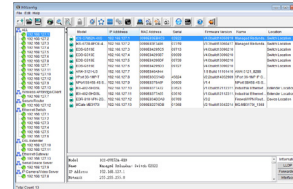
Network Setting



Execute CLI



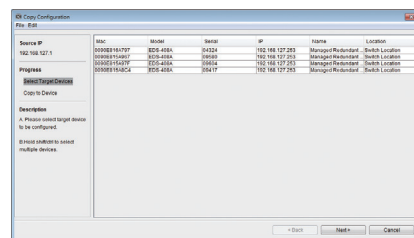
Quick Add Panel



Multiple Grouping

Fast Configuration Deployment

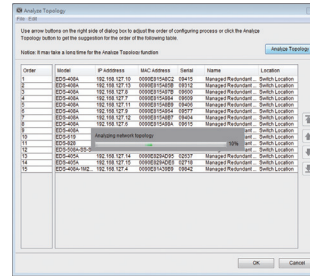
- Quick configuration: copy a specific setting to multiple devices and change IP addresses with one click



Copy Configuration

Link Sequence Detection

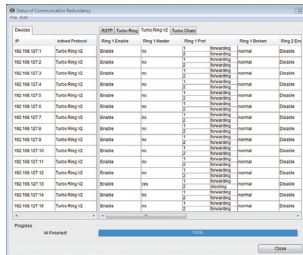
- Link sequence detection eliminates manual configuration errors and avoids disconnections, especially when configuring redundancy protocols or VLAN settings for a network in a daisy chain topology (line topology).
- Link sequence IP setting (LSIP) prioritizes devices and configure IP addresses by link sequence to enhance deployment efficiency, especially in a daisy chain topology (line topology).



Analyze Topology

Configuration Overview and Documentation

- Useful mass status overview and configuration check for each managed function.
- Generate reports on each managed function for multiple devices in the network.



Status Overview

- Export multiple configuration files with flexible filenames and import configuration setting to multiple devices.
- Export device list for easy backup, and import device list for quick searching.

	A	B	C	D	E	F	G	H	I	J	K	L	M
	IP	Address Protocol	Ring 1 Master	Ring 1 Port	Ring 1 Status	Ring 1 Link	Ring 2 Enable	Ring 2 Master	Ring 2 Port	Ring 2 Coupling Enable	Coupling Mode	Coupling Port	
1	192.168.127.1	Turbo Ring V2	Enable	no	1 forwarding	normal	Disable	no	1 noRedundant	N/A	Disable	Dual Homing	1 noRedundant
2	192.168.127.2	Turbo Ring V2	Enable	no	1 forwarding	normal	Disable	no	1 noRedundant	N/A	Disable	Dual Homing	1 noRedundant
3	192.168.127.3	Turbo Ring V2	Enable	no	1 forwarding	normal	Disable	no	1 noRedundant	N/A	Disable	Dual Homing	1 noRedundant
4	192.168.127.4	Turbo Ring V2	Enable	no	1 forwarding	normal	Disable	no	1 noRedundant	N/A	Disable	Dual Homing	1 noRedundant
5	192.168.127.5	Turbo Ring V2	Enable	no	1 forwarding	normal	Disable	no	1 noRedundant	N/A	Disable	Dual Homing	1 noRedundant
6	192.168.127.6	Turbo Ring V2	Enable	no	1 forwarding	normal	Disable	no	1 noRedundant	N/A	Disable	Dual Homing	1 noRedundant
7	192.168.127.7	Turbo Ring V2	Enable	no	1 forwarding	normal	Disable	no	1 noRedundant	N/A	Disable	Dual Homing	1 noRedundant
8	192.168.127.8	Turbo Ring V2	Enable	no	1 forwarding	normal	Disable	no	1 noRedundant	N/A	Disable	Dual Homing	1 noRedundant
9	192.168.127.9	Turbo Ring V2	Enable	no	1 forwarding	normal	Disable	no	1 noRedundant	N/A	Disable	Dual Homing	1 noRedundant
10	192.168.127.10	Turbo Ring V2	Enable	no	1 forwarding	normal	Disable	no	1 noRedundant	N/A	Disable	Dual Homing	1 noRedundant
11	192.168.127.11	Turbo Ring V2	Enable	yes	1 forwarding	2 blocking	normal	Disable	no	1 noRedundant	N/A	Disable	Dual Homing
12													

File Export

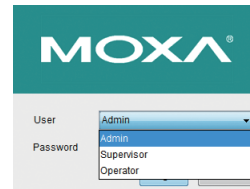
Unlock Devices and User Privileges

- Mass device unlocking and password file export for quick unlocks.



Unlock Devices

- Three user privilege levels to enhance management flexibility and security: Admin, Supervisor, and Operator.



Three User Privilege Levels

System Requirements

CPU	2 GHz or faster dual core CPU
RAM	256 MB
Hard Disk Space	1 GB
Operating System	Windows XP Professional, Windows 7 (32/64-bit), Windows 8 (32/64-bit), Windows Server 2008 (32/64-bit), Windows Server 2012 (32/64-bit)

Supported Devices

MXconfig v2.0 supports the following devices:

Series	Model Name	Firmware
AWK Series	AWK-1121	V1.4
	AWK-1127	V1.4
	AWK-3121	V1.10
	AWK-3121-SSC-RTG	V1.4
	AWK-3121-M12-RTG	V1.4
	AWK-3131	V1.2
	AWK-3131-M12-RCC	V1.0
	AWK-4121	V1.10
	AWK-4131	V1.2
	AWK-5222	V1.7
	AWK-5232	V1.3
	AWK-6222	V1.7
	AWK-6232	V1.3
	EDR Series	EDR-810
EDS Series	EDS-405A/408A	V3.1
	EDS-405A/408A-EIP	V3.1
	EDS-405A/408A-PN	V3.1
	EDS-505A/508A/516A	V3.1
	EDS-510A	V3.1
	EDS-518A	V3.1
	EDS-510E	V4.0
	EDS-G508E/G512E/G516E	V4.0
	EDS-608/611/616/619	V3.1
	EDS-728	V3.1
	EDS-828	V3.1
	EDS-G509	V3.1
	EDS-P510	V3.1
	EDS-P510A-8PoE	V3.1
	EDS-P506A-4PoE	V3.1

Series	Model Name	Firmware
ICS Series	ICS-G7526/G7528	V3.1
	ICS-G7826/G7828	V3.1
	ICS-G7748/G7750/G7752	V3.1
	ICS-G7848/G7850/G7852	V3.1
IEX Series	IEX-402-SHDSL	V1.0
	IEX-402-VDSL2	V1.0
IKS Series	IKS-6726/6728	V3.1
	IKS-G6524	V3.1
	IKS-G6824	V3.1
MGate Series	IKS-6728-8PoE	V3.1
	MGate MB3170	V2.1
	MGate MB3180	V1.3
	MGate MB3270	V2.1
	MGate MB3280	V2.1
	MGate MB3480	V2.2
	MGate EIP3170	V1.1
	MGate EIP3170I	V1.1
	MGate EIP3270	V1.1
	MGate EIP3270I	V1.1

Series	Model Name	Firmware
NPort Series	NPort S8455	V1.4
	NPort S8458	V1.4
PT Series	PT-7528	V3.1
	PT-7710	V3.1
	PT-7728	V3.1
	PT-7828/7828-PTP	V3.1
	PT-G7509	V3.1
TN Series	PT-508/510	V3.1
	TN-5508/5510	V3.1
	TN-5516/5518	V3.1
	TN-5508-4PoE	V3.1
	TN-5510-PoE	V3.1
	TN-5516-8PoE	V3.1
VPort Series	TN-5518-PoE	V3.1
	VPort 26A-1MP	V1.2
	VPort 36-1MP	V1.1
	VPort P06-1MP-M12	V2.2

Note: MXconfig supports the listed or higher firmware versions.

Note: Additional model names will be added as MXconfig is updated. Check Moxa's website for the most up-to-date information.