

InTouch® HMI and ArcestrA® Integration Guide

Invensys Systems, Inc.

Revision A

Last Revision: 6/15/07



Copyright

© 2007 Invensys Systems, Inc. All Rights Reserved.

All rights reserved. No part of this documentation shall be reproduced, stored in a retrieval system, or transmitted by any means, electronic, mechanical, photocopying, recording, or otherwise, without the prior written permission of Invensys Systems, Inc. No copyright or patent liability is assumed with respect to the use of the information contained herein. Although every precaution has been taken in the preparation of this documentation, the publisher and the author assume no responsibility for errors or omissions. Neither is any liability assumed for damages resulting from the use of the information contained herein.

The information in this documentation is subject to change without notice and does not represent a commitment on the part of Invensys Systems, Inc. The software described in this documentation is furnished under a license or nondisclosure agreement. This software may be used or copied only in accordance with the terms of these agreements.

Invensys Systems, Inc.
26561 Rancho Parkway South
Lake Forest, CA 92630 U.S.A.
(949) 727-3200

<http://www.wonderware.com>

For comments or suggestions about the product documentation, send an e-mail message to productdocs@wonderware.com.

Trademarks

All terms mentioned in this documentation that are known to be trademarks or service marks have been appropriately capitalized. Invensys Systems, Inc. cannot attest to the accuracy of this information. Use of a term in this documentation should not be regarded as affecting the validity of any trademark or service mark.

Alarm Logger, ActiveFactory, ArchestrA, Avantis, DBDump, DBLoad, DT Analyst, FactoryFocus, FactoryOffice, FactorySuite, FactorySuite A², InBatch, InControl, IndustrialRAD, IndustrialSQL Server, InTouch, MaintenanceSuite, MuniSuite, QI Analyst, SCADAAlarm, SCADASuite, SuiteLink, SuiteVoyager, WindowMaker, WindowViewer, Wonderware, and Wonderware Logger are trademarks of Invensys plc, its subsidiaries and affiliates. All other brands may be trademarks of their respective owners.

Contents

Welcome.....	7
Documentation Conventions.....	7
Technical Support	8
Chapter 1 About InTouch HMI and ArcestrA Integration.....	9
Stand-Alone InTouch Applications.....	10
Communication within the Galaxy	11
Managed InTouch Applications.....	12
Published InTouch Applications.....	13
ArcestrA Symbols.....	13
Comparing Stand-Alone, Managed, and Published InTouch Applications.....	14
Managing InTouch Applications using the ArcestrA IDE.....	15
InTouchViewApp Object	17
Associating a InTouchViewApp Template with an InTouch Application	18
Editing a Managed InTouch Application	18
Testing a Managed InTouch Application	18
Deploying the InTouchViewApp Object	19
Exporting and Importing an InTouchViewApp Object	19

Exporting and Importing Tag Data Associated with a Managed InTouch Application.....	20
Publishing Managed InTouch Applications.....	20
Exporting and Importing InTouch Windows between InTouch Applications	21
Attributes of the InTouchViewApp Object.....	21
Differences Between the InTouchViewApp Object and Other AutomationObjects	22
ViewEngine Object	23
ArchestrA Symbols.....	24
Creating ArchestrA Symbols	24
Embedding ArchestrA Symbols into InTouch Windows	25
Creating New ArchestrA Object Instances Automatically	26
Symbol Change Propagation	27
Symbol Dynamic Size Propagation	27

Chapter 2 Managing InTouch Applications with the IDE.....29

Starting the ArchestrA IDE from Application Manager.....	30
Creating a Managed InTouch Application.....	31
Starting WindowMaker from the ArchestrA IDE	33
Submitting Changes for an InTouch Application.....	35
Importing an InTouch Application.....	36
Importing and Exporting an InTouchViewApp Object ...	38
Publishing a Managed InTouch Application	39
Deleting a Managed InTouch Application	40
Exporting and Importing Tag Data.....	41
Retaining Tag Value and Parameters.....	42

Chapter 3 Using ArchestrA Symbols in WindowMaker.....43

Embedding ArchestrA Symbols into an InTouch Window	44
Embedding ArchestrA Symbols from Automation Templates	45
Embedding ArchestrA Symbols from Instances	47
Embedding ArchestrA Symbols from the Graphic Toolbox.....	48
Resizing Embedded ArchestrA Symbols	49

Configuring ArcestrA Symbols in WindowMaker	50
Configuring WindowMaker Animation Links of an ArcestrA Symbol	50
Connecting ArcestrA Symbols to InTouch Tags	52
Example of Connecting ArcestrA Symbols to InTouch Tags	54
Selecting Alternate Instances from the Same Parent	58
Selecting Alternate Symbols of the Same Instance	59
Substituting Strings in ArcestrA Symbols	60
Substituting References in ArcestrA Symbols	60
Enabling or Disabling Dynamic Size Change Propagation of Embedded ArcestrA Symbols	61
Editing ArcestrA Symbols in the ArcestrA Symbol Editor	62
Editing an Embedded ArcestrA Symbol	62
Accepting Symbol Changes in WindowMaker	64
Accepting Symbol Changes in WindowViewer	64
Testing ArcestrA Symbols in WindowViewer	65
Creating New Automation Instances	67

Chapter 4 Using Managed InTouch Applications at Run Time	69
Deploying a Managed InTouch Application	70
Deploying a InTouchViewApp Object for the First Time	71
Deploying Changes to a Managed InTouch Application	71
Starting a Managed InTouch Application	72
Accepting New Application Versions at the Operator Node	73
Running ArcestrA Scripts in Embedded ArcestrA Symbols	75
Deploying the InTouchViewApp Object in a Terminal Services Environment	77
Index	79

Welcome

This documentation shows you how ArcestrA Integrated Development Environment (IDE) can manage InTouch HMI applications so that you can effectively use the new functionality introduced by the ArcestrA Symbol Editor.

You can view this document online or you can print it, in part or whole, by using the print feature in Adobe Acrobat Reader.

This documentation assumes you know how to use Microsoft Windows, including navigating menus, moving from application to application, and moving objects on the screen. If you need help with these tasks, see the Microsoft documentation.

Documentation Conventions

This documentation uses the following conventions:

Convention	Used for
Initial Capitals	Paths and file names.
Bold	Menus, commands, dialog box names, and dialog box options.
Monospace	Code samples and display text.

Technical Support

Wonderware Technical Support offers a variety of support options to answer any questions on Wonderware products and their implementation.

Before you contact Technical Support, refer to the relevant section(s) in this documentation for a possible solution to the problem. If you need to contact technical support for help, have the following information ready:

- The type and version of the operating system you are using.
- Details of how to recreate the problem.
- The exact wording of the error messages you saw.
- Any relevant output listing from the Log Viewer or any other diagnostic applications.
- Details of what you did to try to solve the problem(s) and your results.
- If known, the Wonderware Technical Support case number assigned to your problem, if this is an ongoing problem.

Chapter 1

About InTouch HMI and ArcestrA Integration

You can manage your InTouch applications with the InTouch Application Manager or with the ArcestrA IDE.

There are three types of InTouch applications, categorized by how they are managed or where they were published from:



Stand-Alone InTouch applications



Managed InTouch applications



Published InTouch applications

You can enhance your InTouch applications with graphic objects, the ArcestrA Symbols.

Stand-Alone InTouch Applications

Stand-alone InTouch applications are managed by the InTouch Application Manager.



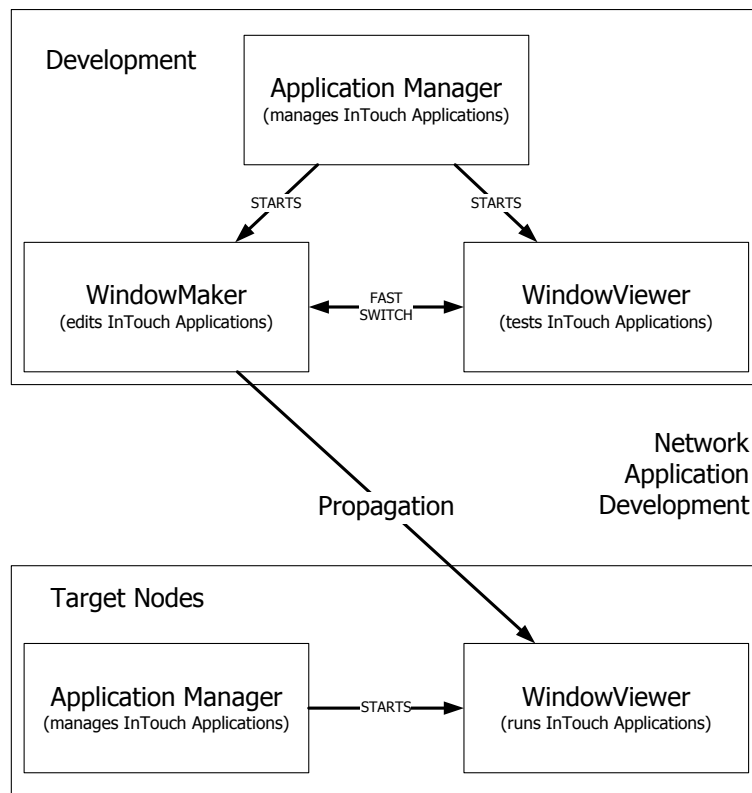
They appear in the InTouch Application Manager as **Stand Alone**.

Using the Application Manager, you can:

- Create and manage stand-alone InTouch applications.
- Start WindowMaker to edit InTouch applications
- Start WindowViewer to run InTouch applications.

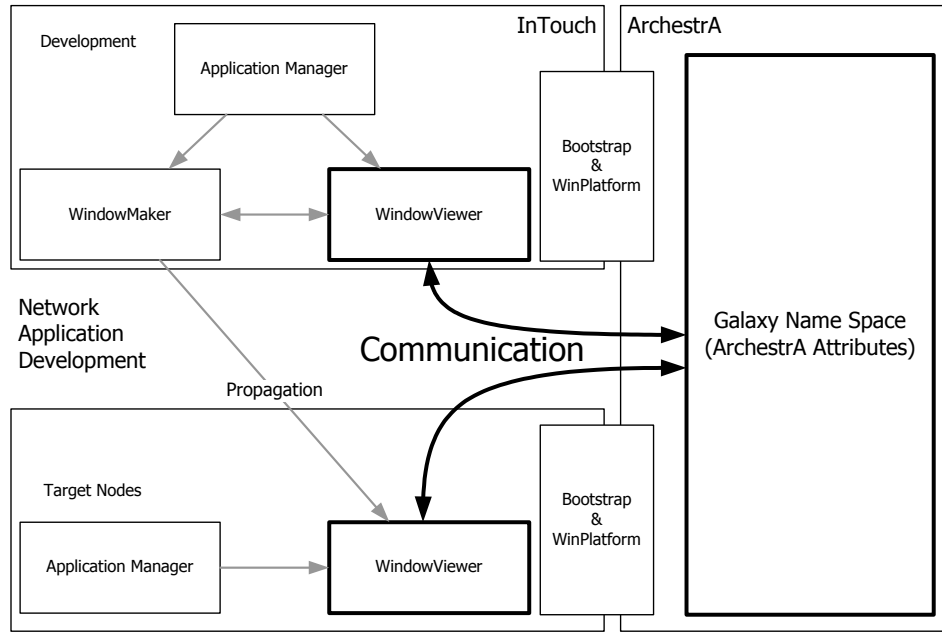
You can also switch directly between WindowMaker and WindowViewer to test or run your applications and switch back to make modifications to your applications.

Network Application Development manages the propagation of changes from your InTouch application on a development node to running InTouch applications on target nodes.



Communication within the Galaxy

ArchestrA enables the use of a Galaxy-wide name space to contain and process production-related data. It also allows a high-level visualization and administration of data access from various nodes running InTouch in the manufacturing environment.



Managed InTouch Applications

You can manage your InTouch applications using the ArcestrA Integrated Development Environment (IDE). These applications are called “Managed” InTouch applications.

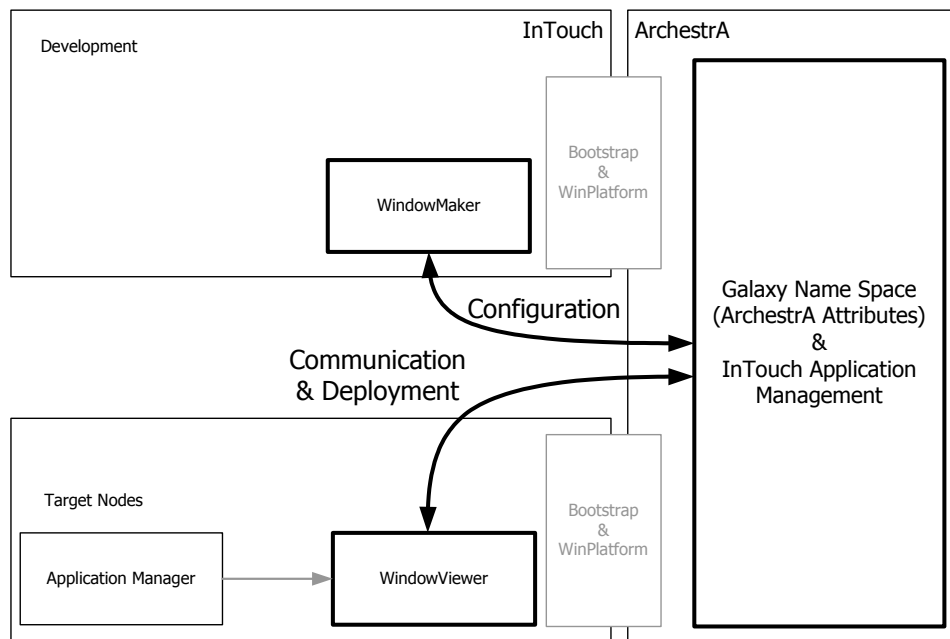


They appear in InTouch Application Manager as **Managed**.

You develop an InTouch application on one node of the Galaxy with WindowMaker. You then deployed it to one or more target nodes running WindowViewer.

When you use the system platform functionality of the ArcestrA IDE to manage your InTouch applications, you can:

- See which InTouch applications are running on what node.
- Use a central repository for InTouch applications.
- Deploy changes to WindowViewer running on the remote nodes.



Published InTouch Applications

After you edit your managed InTouch application, you can publish it.



A managed application appears in InTouch Application Manager as **Published**.

The advantage of published InTouch applications is that they can be distributed like stand-alone InTouch applications, but continue to support the functionality of the ArcestrA Symbols.

However, you can no longer:

- Use ArcestrA IDE to deploy the InTouch applications.
- Edit or add ArcestrA Symbols in the InTouch applications.

ArcestrA Symbols

In addition to the benefits of managing InTouch applications within the ArcestrA IDE, you can model your manufacturing environment by creating graphics with the ArcestrA Symbol Editor.

The ArcestrA Symbol Editor is fully integrated into the ArcestrA IDE and supports powerful modelling possibilities.

You can embed the ArcestrA Symbols into your managed InTouch applications, which can then be used as published InTouch applications.

Comparing Stand-Alone, Managed, and Published InTouch Applications

Stand-alone, managed, and published InTouch applications have some differences and some similarities, as described in the following table:

	Stand-alone InTouch Applications	Managed InTouch Applications	Published InTouch Applications
Create Application	Application Manager	ArcestrA IDE <ul style="list-style-type: none"> • New application • Importing stand-alone application • Importing SmartSymbols 	Not possible
Edit Application	WindowMaker started from the Application Manager	WindowMaker started from within the IDE	WindowMaker started from the Application Manager
Delete Application	Delete folder and remove from Application Manager	Delete InTouchViewApp template	Delete folder and remove from Application Manager
Support of ArcestrA Symbols	No	Yes for all operations	Yes, but only for viewing, not for creating and editing
Support of DB Dump and DB Load	Yes, function within Application Manager	Yes, function within the IDE	Yes, function within Application Manager
Editing application in original resolution requires conversion	Yes	No	Yes
Management of Distributed Applications	Network Application Development (NAD)	ArcestrA IDE	Network Application Development (NAD)

	Stand-alone InTouch Applications	Managed InTouch Applications	Published InTouch Applications
Configuring how new InTouch application versions are accepted	Configured in Application Manager (Network Application Development)	Configured in WindowMaker	Configured in Application Manager (Network Application Development)
Use Fast-Switch to test application	Yes	Yes	Yes
Use tag value and tag parameter retention	Yes	Yes, also requires configuration of the local working directory	Yes

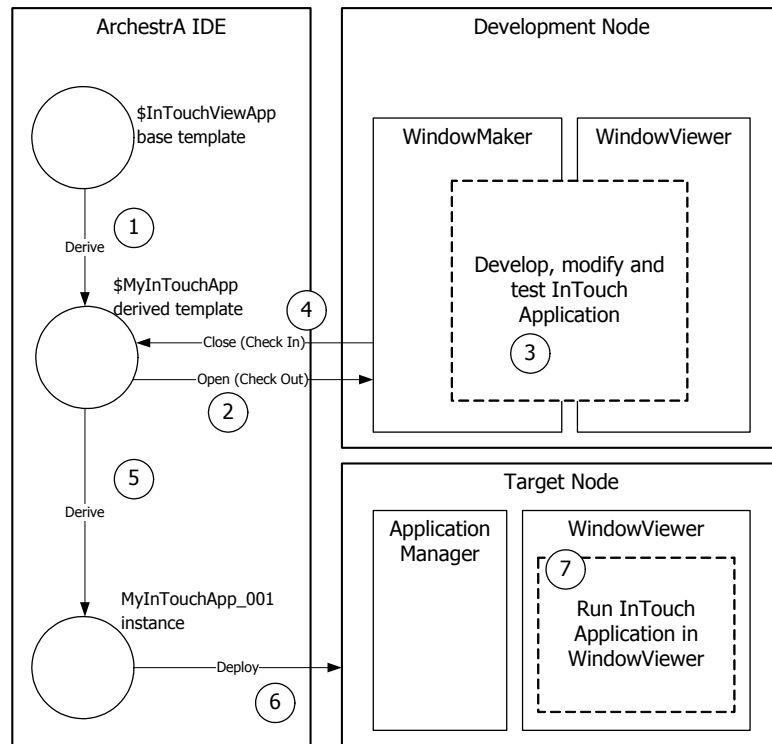
Managing InTouch Applications using the ArcestrA IDE

You can manage your InTouch applications using the IDE. The following procedure shows you how to do this in a general way. For more specific information, see [Managing InTouch Applications with the IDE on page 29](#).

The InTouch functionality in the ArcestrA IDE is handled by two AutomationObjects:

- The InTouchViewApp object represents an InTouch application at design time and run time.
- The ViewEngine object controls how the InTouch application is run on the target node in the Galaxy.

The following diagram shows how InTouch applications are managed using the ArcestrA IDE:



To use the IDE to manage your InTouch applications

- 1 Create a managed InTouch application in the ArcestrA IDE.
- 2 Open it in WindowMaker.
- 3 Configure your InTouch application in WindowMaker. You can switch to WindowViewer to test the application.
- 4 Save the InTouch application and close WindowMaker and WindowViewer.
- 5 Determine which nodes to deploy the InTouch application to.
- 6 Deploy the InTouch application to the target nodes in the Galaxy.
- 7 Run the InTouch application in WindowViewer on the target nodes.

InTouchViewApp Object

ArcestrA manages your InTouch applications with a specific type of ArcestrA object called the InTouchViewApp object.

An InTouchViewApp template references one specific managed InTouch application at design time and cannot be executed at run time.

You must create an instance of the TouchViewApp template. This instance can be deployed to a target node. The target node is the node on which the managed InTouch application runs in WindowViewer.

To distribute an InTouch application, you create multiple instances of the same template and deploy them to multiple nodes.

Optionally, you can:

- Export and import the InTouchViewApp object to exchange managed InTouch applications across Galaxies.
- Export and import tag dictionary data as .csv files.
- Export and import windows between different types of InTouch applications.
- Publish the managed InTouch application. The published InTouch application runs like a stand-alone InTouch application but can contain ArcestrA Symbols.
- Use the attributes of the deployed InTouchViewApp object to read from and write to InTouch tags with ArcestrA attributes.

To use the InTouchViewApp object

- 1 Derive an InTouchViewApp template from the \$InTouchViewApp base template.
- 2 Associate the derived template with an InTouch application by creating a new InTouch application or importing a stand-alone InTouch application.
- 3 Open the application in WindowMaker.
- 4 Configure the application in WindowMaker and test it in WindowViewer.
- 5 Save and close WindowMaker. The InTouchViewApp template is checked in.
- 6 Derive instances from the InTouchViewApp template.
- 7 Deploy these instances to selected target nodes within the Galaxy.
- 8 Run Application Manager on the target nodes and run the managed InTouch applications in WindowViewer.

Associating a InTouchViewApp Template with an InTouch Application

After you create a new InTouchViewApp template, you can associate an InTouchViewApp template with an InTouch application by:

- Creating a new InTouch application.
- Importing a stand-alone InTouch application.

The InTouchViewApp template does not contain the InTouch application data itself, such as the tag configuration and values, but simply references the application.

Editing a Managed InTouch Application

You edit a managed InTouch application with WindowMaker as you do for a stand-alone InTouch application, except that you open the editor of the InTouchViewApp template to start the associated InTouch application in WindowMaker.

When you close WindowMaker after making changes to the InTouch application, the InTouchViewApp object is automatically checked in.

Testing a Managed InTouch Application

You can test a managed InTouch application with WindowViewer as you can with stand-alone InTouch applications.

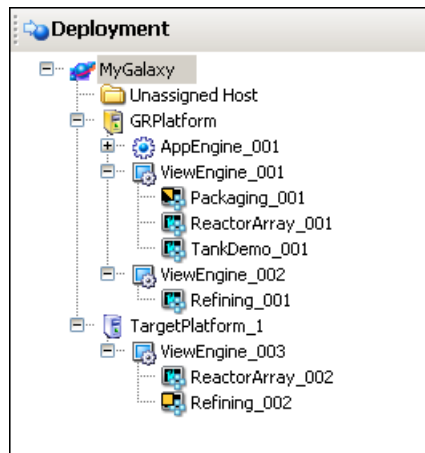
When a managed InTouch application is open in WindowMaker, you can fast-switch to WindowViewer and then back to WindowMaker again.

If a managed InTouch application contains references to ArcestrA data, such as `galaxy:UDA`, then a WinPlatform object needs to be deployed to the node you are editing the InTouch application on. Otherwise, the data shows blank values.

Deploying the InTouchViewApp Object

After you derive an instance of your InTouchViewApp template, you can assign it to the target platform under a ViewEngine object.

You cannot assign multiple InTouchViewApp instances that have the same parent under one ViewEngine. Instead create a second ViewEngine instance to host additional InTouchViewApp instances with the same parent.



After you deploy the InTouchViewApp object, you can open the InTouch Application Manager on the target node. The associated managed InTouch application appears in the list together with the time stamp of its last deployment in the **Date Modified** column.

When you deploy the InTouchViewApp instance to a target node, the InTouch application is contained in:

- A folder on the development node. This contains the source for the InTouchViewApp template.
- A folder on the target node from which the InTouch application runs. This contains an instance copy of the InTouch application.

Exporting and Importing an InTouchViewApp Object

You can export the InTouchViewApp object. You do this, for example, to use the managed InTouch application together with its hosting InTouchViewApp object in other Galaxies.

When you export the object, a package file (.aaPKG) is created containing information about the object, the associated managed InTouch application, and any ArcestrA Symbols the application uses.

When you import an InTouchViewApp object, the ArcestrA IDE also imports the managed InTouch application.

Exporting and Importing Tag Data Associated with a Managed InTouch Application

You can export tag data that is associated with a managed InTouch application to a .csv file. This is equivalent to the DB Dump function of the InTouch Application Manager.

You can import the exported tag data from a .csv file back into a managed InTouch application in the same way as the DB Load function.

The exported .csv files from a managed InTouch application and those of a stand-alone InTouch application are fully interchangeable.

Publishing Managed InTouch Applications

You can publish a managed InTouch application. The published InTouch application is no longer associated with the InTouchViewApp template.

The published application cannot be edited within the IDE or imported into another InTouchViewApp template. In other words, you cannot manage it with the IDE or republish it.

The published InTouch application can still communicate with the Galaxy through any embedded ArcestrA Symbol. You can, for example, write data back to the Galaxy or visualize Galaxy data.

You can edit the ArcestrA Symbol using basic InTouch operations such as copying, cutting, pasting, duplicating, moving, resizing, flipping, rotating, and configuring with InTouch animation links.

However, the ArcestrA Symbols cannot be modified, nor can new ArcestrA Symbols be embedded into the InTouch application. These operations are only allowed with managed InTouch applications.

You can do this in environments that do not support the processing requirements of ArcestrA. For example, in remote plant operations or in small networks.

Exporting and Importing InTouch Windows between InTouch Applications

You can export windows from all three InTouch application types from WindowMaker, but there are some restrictions on importing exported windows or windows directly from an InTouch application.

- For stand-alone InTouch applications, you cannot import any windows from published and managed InTouch applications that contain ArcestrA Symbols. A warning message appears, and information on which windows were not imported is written to the Logger.

If you import windows from managed or published InTouch application that contain ArcestrA Symbols, the windows are imported, but the ArcestrA Symbols are not functional and appear as “Not Found”.

- For managed InTouch applications, you can import any windows from published, stand-alone, and other managed InTouch applications. Embedded ArcestrA Symbols are not imported.
- For published InTouch applications, you can import any windows from stand-alone InTouch applications. Embedded ArcestrA Symbols are not imported.

Attributes of the InTouchViewApp Object

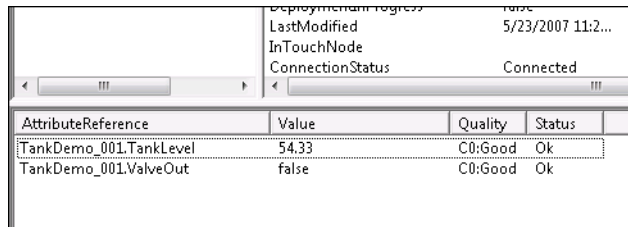
You can use the ArcestrA attributes of the InTouchViewApp object to access the run-time data of the tags of the associated InTouch application. This is useful for reading and writing InTouch data directly in the Galaxy name space and provides the same functionality as the InTouchProxy object.

In this example, a deployed managed InTouch application uses a real tag TankLevel to report the fill level of a tank and a discrete tag ValveOut to control the state of a valve.

To read and write the InTouch tags from the InTouchViewApp object instance

- 1 Right-click the deployed InTouchViewApp object, and then click **View in Object Viewer**. Object Viewer appears.
- 2 Right-click in the Watch area, and then click **Add Attribute Reference**. The **Add Attribute Reference** dialog box appears.

- 3 In the **Attribute Reference** box, type the name of the InTouchViewApp object followed by a dot and the name of the InTouch tag you want to read or write. For example, TankDemo_001.TankLevel.
- 4 Click **OK**. The attribute is added to the Watch area.
- 5 Repeat steps 3 and 4 for any other InTouch tags you want to read or write.
- 6 You can now view the InTouch tag value.



AttributeReference	Value	Quality	Status
TankDemo_001.TankLevel	54.33	C0:Good	Ok
TankDemo_001.ValveOut	false	C0:Good	Ok

- 7 To write to an InTouch tag value, do the following:
 - a Double-click it. The **Modify Value** dialog box appears.
 - b Type a new value and click **OK**. The value is written back to the tag of the running InTouch application.

Differences Between the InTouchViewApp Object and Other AutomationObjects

The InTouchViewApp object is unlike other AutomationObjects. You cannot perform some operations you can normally do with other AutomationObjects.

- If you try to configure an InTouchViewApp instance, a message appears asking if you want to open its parent template instead. You cannot configure the instance directly, only the parent template.
- If you try to open more than one InTouchViewApp template for configuration at a time on one node, IDE prevents you from doing so. Close WindowMaker, WindowViewer, and Application Manager and retry. Alternately, you can edit the InTouchViewApp object on a different node with InTouch WindowMaker.
- If you close the IDE while editing an InTouch application with WindowMaker, WindowMaker prompts you to save any changes. It then closes and the InTouchViewApp template is checked in.
- If you close the IDE while testing an InTouch application with WindowViewer, WindowViewer closes.

If you want to:

- Change the association between the InTouchViewApp and the InTouch application, create a new derived InTouchViewApp template instead.
- Use ArcestrA security (Galaxy security) in InTouch, deploy a WinPlatform instance to the node on which the deployed managed InTouch application is running.

ViewEngine Object

The ViewEngine is an ArcestrA object that hosts and runs deployed InTouchViewApp objects.

To deploy an InTouchViewApp instance to a target platform, you need to assign it to a ViewEngine object first. The ViewEngine object is then assigned to the target WinPlatform object.

The ViewEngine fulfils the same functions for the InTouchViewApp instances as the AppEngine instance does for the Application Objects. The ViewEngine:

- Sets up and initializes the InTouchViewApp objects when they are initially deployed and started, so that they can communicate with other objects in the Galaxy.
- Performs diagnostics on attributes that can be monitored, alarmed, and historized.
- Historizes data to the Wonderware Historian.

You can use different ViewEngine objects to:

- Historize data to different Wonderware Historians.
- Interact with deployed InTouch applications at different scan rates. This sets at which frequency InTouch tag data can interact with the Galaxy name space.

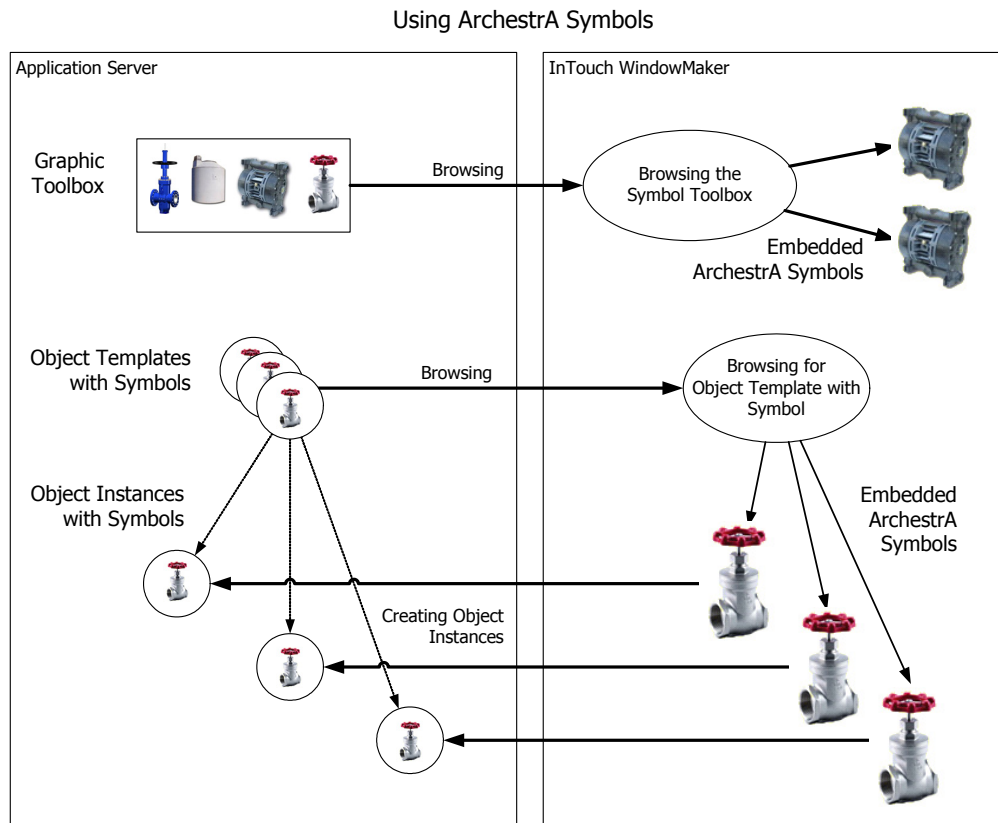
A platform can host multiple ViewEngine objects. Every InTouchViewApp must be assigned to a ViewEngine.

You cannot create multiple instances of the same InTouchViewApp template to run under the same ViewEngine object. But you can run multiple instances of the same template under different ViewEngine objects.

ArcestrA Symbols

The ArcestrA IDE includes a Symbol Editor that you can use to create symbols that visualize production processes and provide an HMI interface to ArcestrA AutomationObjects.

The following diagram shows you how symbols that are created with the ArcestrA Symbol Editor can be used in InTouch applications.



Creating ArcestrA Symbols

ArcestrA Symbols are created with the ArcestrA Symbol Editor in the IDE.

You can create:

- ArcestrA Symbols in the Graphic Toolbox. These are not associated with any specific ArcestrA object template or ArcestrA object instance.
- ArcestrA Symbols contained in a specific ArcestrA object template or instance.

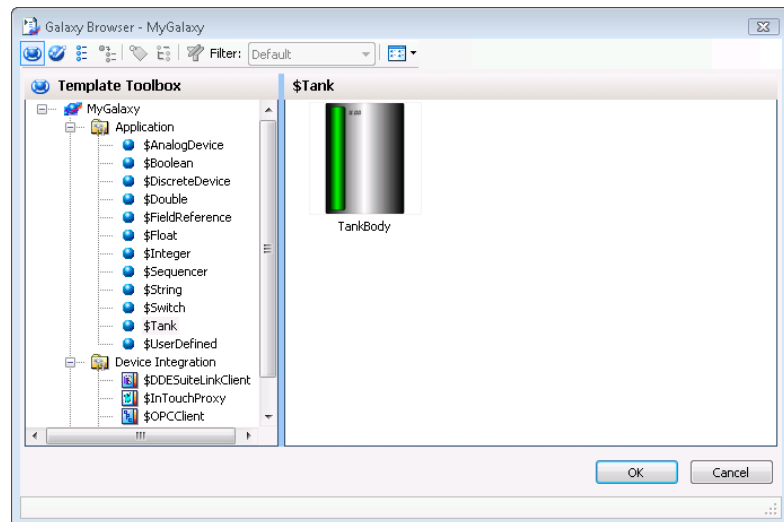
Embedding ArchestrA Symbols into InTouch Windows

ArchestrA Symbols can be embedded into a managed InTouch application and used.

You can embed an ArchestrA Symbol into a window of a managed InTouch application from:

- The Graphic Toolbox
- An ArchestrA object template
- An ArchestrA object instance

You embed these objects into InTouch windows by browsing the Galaxy for symbols or AutomationObjects.



Creating New ArcestrA Object Instances Automatically

If you embed an ArcestrA Symbol from a template, the InTouch HMI can create an instance of that object and the symbol instance references the new instance.

The following example shows you how to create a new ArcestrA object instance automatically.

To create a new ArcestrA object instance automatically

- 1 Create an ArcestrA object template **\$Valve1** and open it in the ArcestrA IDE object editor.
- 2 On the **Graphics** tab, add an ArcestrA Symbol called **ValveSymbol**.
- 3 Create a derived template of the InTouchViewApp object and open it in WindowMaker.
- 4 Create a new InTouch window and embed the ArcestrA Symbol **ValveSymbol** from the ArcestrA object template **\$Valve1**. WindowMaker prompts you for an instance name.
- 5 Type a name, for example `Valve1_E122` and click **OK**. The ArcestrA Symbol is pasted on the InTouch window and the AutomationObject instance `Valve1_E122` is created in the Galaxy.

Symbol Change Propagation

Any changes to a source ArchestrA Symbol are propagated to all embedded ArchestrA Symbols. This affects the ArchestrA Symbols in WindowMaker and the ArchestrA Symbols inherited by AutomationObjects.



If a change is made to an ArchestrA Symbol and it is used in an open InTouch window, the Symbol Changed icon appears in the bottom right corner of the status bar.

When you double-click this icon, the embedded ArchestrA Symbol is updated with the changes.

The following example shows you how symbol change propagation works.

To propagate a symbol change

- 1 Follow the example from *Creating New ArchestrA Object Instances Automatically* on page 26.
- 2 In WindowMaker, open the window that shows the Valve symbol.
- 3 Open the ArchestrA Symbol ValveSymbol that is hosted by the ArchestrA object template \$Valve1.
- 4 Make some changes and click **Close and Save**. The changes are propagated to ArchestrA object instance Valve1_E22. In WindowMaker, the Symbol Changed icon appears.
- 5 Double-click the icon to accept the changes. The embedded ArchestrA Symbol is updated.



Symbol Dynamic Size Propagation

You can control the way that size changes of the source symbol are propagated to its embedded symbols. For example, a size change is:

- Resizing one of the elements in the source symbol so that the symbol boundary changes.
- Adding elements to or removing elements from the source symbol so that the symbol's boundary changes.

This feature is called dynamic size change propagation and can be enabled or disabled.

For more information about dynamic size propagation, see the *Creating and Managing ArchestrA Graphics User's Guide*.

Chapter 2

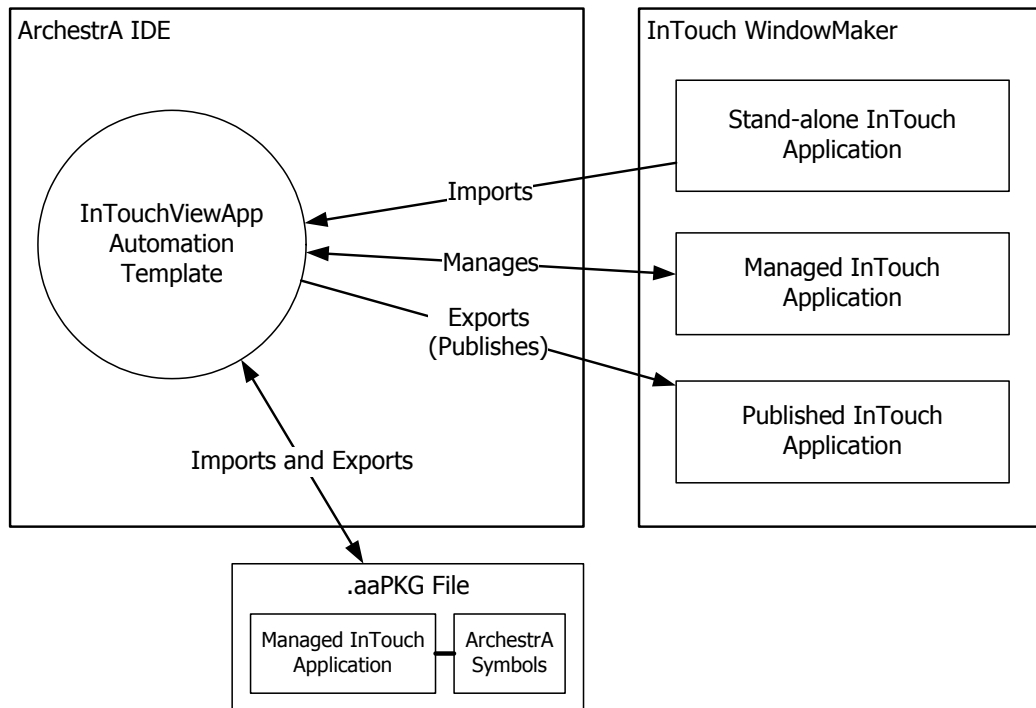
Managing InTouch Applications with the IDE

You can use the ArcestrA IDE to:

- Create a new managed InTouch application.
- Import an existing InTouch application to use as a managed InTouch application.
- Start WindowMaker.
- Submit the changes you make in WindowMaker to a managed InTouch application.
- Export and import a managed InTouch application together with its InTouchViewApp object.
- Publish a managed InTouch application.
- Delete a managed InTouch application.
- Import and export tag data used in a managed InTouch application.
- Export tag data to and import tag data from a .csv file.

You can start the ArcestrA IDE from the InTouch Application Manager.

The following graphic shows how applications are imported, exported, managed, and published.



Starting the Arcestra IDE from Application Manager

If Arcestra IDE is installed on the same computer as InTouch, you can easily start the Arcestra IDE from the InTouch Application Manager.

To start the Arcestra IDE from Application Manager

- ◆ In the InTouch Application Manager, do one of the following:
 - On the **File** menu, click **Arcestra IDE**.
 - Click the Arcestra IDE icon on the toolbar.



The **Connect to Galaxy** dialog box appears.

Creating a Managed InTouch Application

You create a managed InTouch application by creating and configuring an InTouchViewApp object.

You can also view application version, resolution, and description information directly from the InTouchViewApp object.

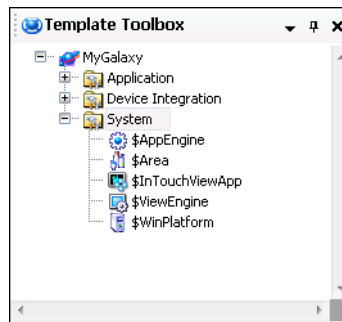
The InTouch application directory is created as a share:

`\\GRNodeName\GalaxyName-$InTouchViewAppObjectName`

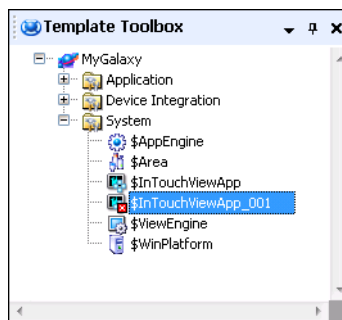
This directory is managed by the IDE, not by the InTouch Application Manager.

To create a managed InTouch application

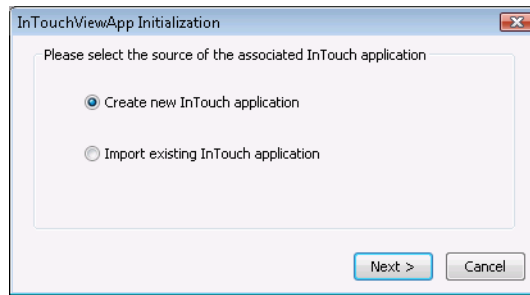
- 1 Open the ArcestrA IDE.
- 2 In the **Template Toolbox**, expand the **System** toolset.



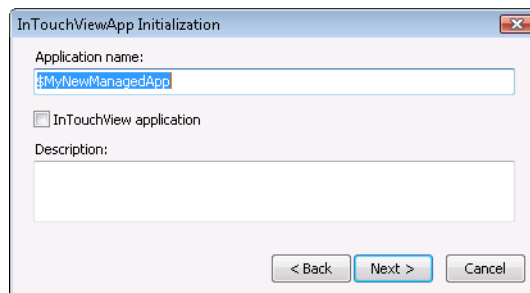
- 3 Derive a template from the **\$InTouchViewApp** base template. Do the following:
 - a Right-click the **\$InTouchViewApp** base template, point to **New**, and then click **Derived Template**. A new derived template appears with a default name.
 - b Rename it, if needed.



- 4 Double-click the derived template. The **InTouchViewApp Initialization** dialog box appears.



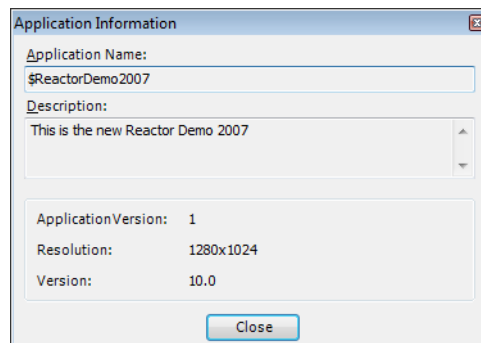
- 5 Select **Create New InTouch Application** and click **Next**. The next panel appears.



- 6 Type a name for the InTouch application and a description.
- 7 Select **InTouchView Application** to create an InTouch application that uses only ArchestrA references as an external data source.
- 8 Click **Next**. WindowMaker starts.

To view application version, resolution, and description

- 1 Open the Template Toolbox.
- 2 Right-click the InTouchViewApp template, and then click **Application Information**. The **Application Information** dialog box appears.

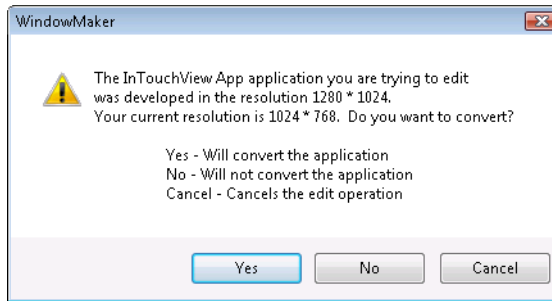


Starting WindowMaker from the ArcestrA IDE

You can edit a managed InTouch application by starting WindowMaker from within the ArcestrA IDE.

You can start WindowMaker from an InTouchViewApp template or an instance.

When opening a managed InTouch application created with a different screen resolution than your current system resolution, a message appears.



- Click **Yes** to convert the InTouch application to the current system resolution and open it.
- Click **No** to open and edit the InTouch application in its original resolution.

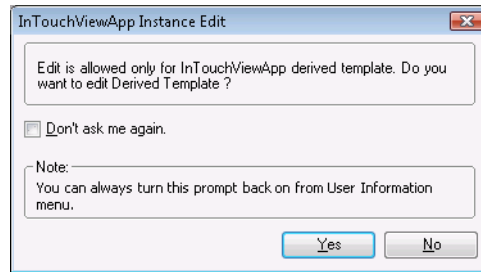
To start WindowMaker from an InTouchViewApp template

- 1 Open the ArcestrA IDE.
- 2 Locate the InTouchViewApp template that includes the managed InTouch application you want to modify.
- 3 Double-click the InTouchViewApp template. WindowMaker starts as the object's default editor and opens the InTouch application. You are ready to edit the managed application.

To start WindowMaker from an InTouchViewApp instance

- 1 Open the ArcestrA IDE.
- 2 Locate the InTouchViewApp object whose parent hosts the managed InTouch application you want to modify.

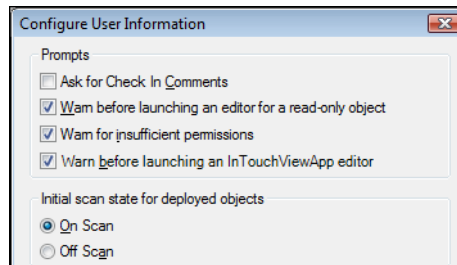
- 3 Double-click the InTouchViewApp object. The **InTouchViewApp Instance Edit** dialog box appears.



- 4 Do any of the following:
 - Click **No** to not open the template.
 - Click **Yes** to open the associated InTouchViewApp template in WindowMaker.

If you select the **Don't ask me again** check box and click **Yes**, the next time you open an InTouchViewApp instance, the managed InTouch application is automatically opened from the associated InTouchViewApp template.

You can change this setting using the **User Information** dialog box, which you open from the **Edit** menu.



Submitting Changes for an InTouch Application

After you modify your managed InTouch application, you can submit the changes for deployment to the target nodes.



After you make changes to a managed InTouch Application, any derived InTouchViewApp objects appear with the Pending Changes icon.

This indicates that you must redeploy the changes to the target nodes, for WindowViewer on those nodes to reflect the changes.

For more information on how to deploy the changes to the operator nodes, see [Deploying a Managed InTouch Application](#) on page 70 and [Accepting New Application Versions at the Operator Node](#) on page 73.

To submit the changes for an InTouch application

- 1 Modify your managed InTouch application in WindowMaker as you would with a stand-alone InTouch application.
- 2 Save your InTouch windows.
- 3 On the **File** menu, click **Exit**. WindowMaker closes and the focus returns to IDE. The **Check In** dialog box appears.
- 4 Type a comment for check in, if necessary and click **OK**. The **Check In** progress dialog box appears.
- 5 Click **Close**.

Importing an InTouch Application

You can import an existing InTouch application to use as a managed InTouch application. You do this in two steps:

- Create an InTouchViewApp object to associate with the imported InTouch application.
- Import the InTouch application.

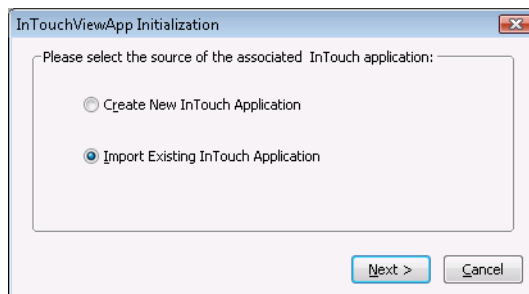
The imported InTouch application becomes a managed InTouch application.

The ArchestrA IDE creates a copy of the existing InTouch application in a folder that it manages. The IDE leaves the existing InTouch application and location unchanged.

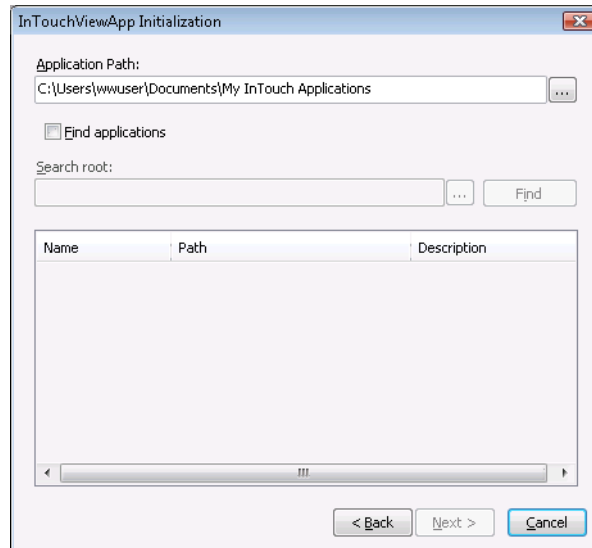
If the version of the InTouch application you are importing is 6.0 or above, a conversion message appears. The application is converted before it is opened in WindowMaker. InTouch applications versions before 6.0 cannot be converted.

To import an InTouch application into a Galaxy

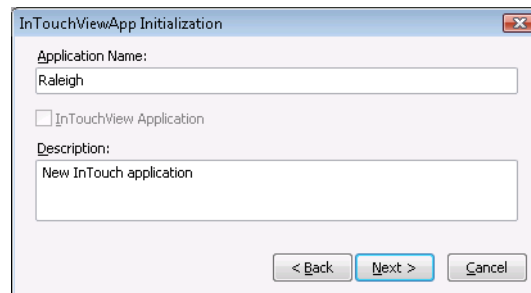
- 1 Open the ArchestrA IDE.
- 2 In the **Template Toolbox**, derive a template from the \$InTouchViewApp base template.
- 3 Open the derived template. The **InTouchViewApp Initialization** dialog box appears.



- 4 Click **Import Existing Application** and click **Next**. The next panel appears.

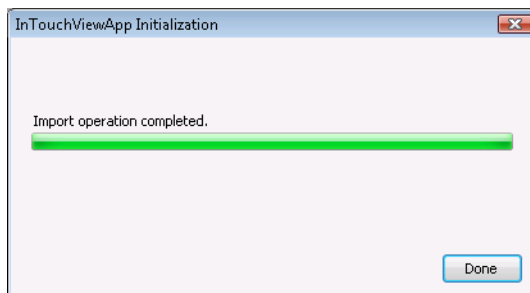


- 5 Locate the InTouch application. Do any of the following:
- Click the ellipsis button to browse for the folder that contains the managed InTouch application.
 - To search for the application, select the **Find applications** check box. Specify a search root for the search to begin and click **Find**. Select the InTouch application from the list.
- 6 Click **Next**. The next panel appears.



- 7 If needed, type a new name in the **Application Name** box and a description in the **Description** box. The name and description appear in the Application Manager when the managed InTouch application is deployed.

- 8 Click **Next**. The next panel appears and shows you the import progress.



- 9 Click **Done**. InTouch WindowMaker is started and you can edit the InTouch application as a managed InTouch application.

Importing and Exporting an InTouchViewApp Object

You can import and export the InTouchViewApp object in the ArcestrA IDE. The InTouchViewApp object contains all information for hosting a managed InTouch application and can be used to exchange a managed InTouch application between Galaxies.

For more information about importing and exporting AutomationObjects, see the Wonderware Application Server documentation.

To import an InTouchViewApp object

- 1 On the **Galaxy** menu, point to **Import**, and then click **Object(s)**. The **Export Automation Object(s)** dialog box appears.
- 2 Select the ArcestrA package (.aaPKG) file that contains the InTouchViewApp object you want to import and click **Open**. The object and its managed InTouch application are imported.
- 3 Click **Close**.

To export an InTouchViewApp object

- 1 On the **Galaxy** menu, point to **Export**, and then click **Object(s)**. The **Import Automation Object(s)** dialog box appears.
- 2 Select a folder to export to, specify an ArcestrA package (.aaPKG) file name and click **Save**. The object and its managed InTouch application are exported.
- 3 Click **Close**.

Publishing a Managed InTouch Application

You can publish a managed InTouch application from the InTouchViewApp object that is associated with it.

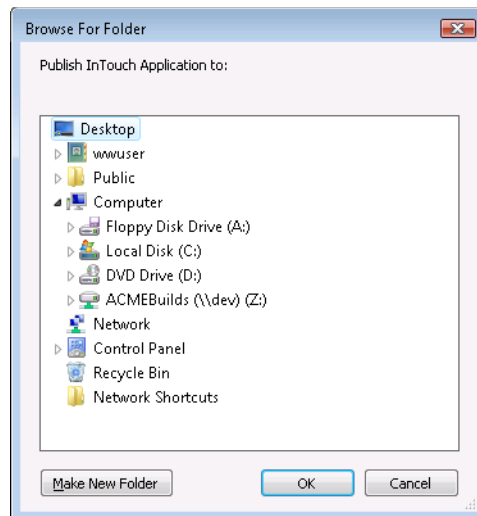
The export consists of a folder containing information about the object and the managed InTouch application.

This is different than exporting the InTouchViewApp object itself. For more information, see [Importing and Exporting an InTouchViewApp Object](#) on page 38.

The published InTouch application cannot be reimported into an InTouchViewApp object.

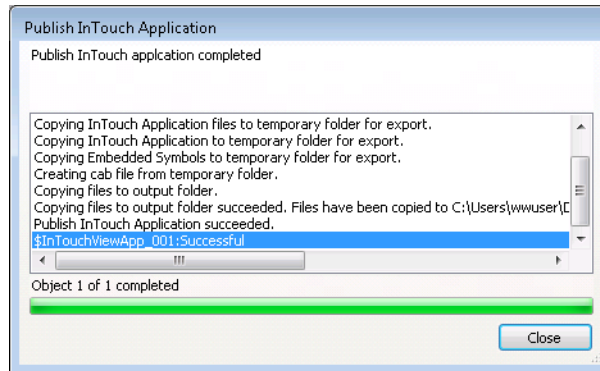
To publish a managed InTouch application

- 1 Open the ArchestrA IDE.
- 2 Locate the InTouchViewApp object that contains the managed InTouch application you want to publish.
- 3 Right-click the object, and then click **Publish InTouch Application**. The **Browse For Folder** dialog box appears.



- 4 Specify the folder to publish to the InTouch application to. Do any of the following:
 - Browse to an existing folder.
 - Click **Make New Folder** to create a new folder or folder structure.

- 5 Click **OK**. The **Publish InTouch Application** progress dialog box appears.



- 6 When publishing is complete, click **Close**. A directory containing the new published InTouch application is created in the selected folder. You can now copy it to any run-time node.

Deleting a Managed InTouch Application

You can delete an InTouch application in the ArchestrA IDE by deleting the associated InTouchViewApp template.

When you do this, the template and the InTouch application directory associated with that template are deleted completely.

You can only delete an InTouch application if the associated InTouchViewApp object does not have any derived instances.

Deleting an InTouchViewApp instance does not delete the associated InTouch application.

To delete the InTouchViewApp template

- 1 Open the ArchestrA IDE.
- 2 Select the InTouchViewApp template that contains the managed InTouch application you want to delete.
- 3 On the **Edit** menu, click **Delete**. The **Delete** dialog box appears.
- 4 Click **Yes**. The InTouchViewApp template and the associated InTouch application folder are deleted.

Exporting and Importing Tag Data

You can export the tag data of a managed InTouch application to a .csv file. You can import this data into another managed InTouch application or a stand-alone InTouch application.

To export tag data from a managed InTouch application

- 1 Open the ArcestrA IDE.
- 2 Select the derived InTouchViewApp template that contains the managed InTouch application from which you want to export the tag data.
- 3 On the **Galaxy** menu, point to **Export**, and then click **DB Dump**. The **CSV File to Dump To** dialog box appears.
- 4 Specify a location and file name for the .csv file and click **Save**. A confirmation dialog box appears.
- 5 Select **Group output by types** if you want the tag data to be grouped by data types in the .csv file.
- 6 Click **OK**. When a success message appears, click **OK**.

To import tag data from a .csv file to a managed InTouch application

- 1 Open the ArcestrA IDE.
- 2 Select the derived InTouchViewApp template that contains the managed InTouch application to which you want to import the tag data.
- 3 On the **Galaxy** menu, point to **Import**, and then click **DB Load**. The **CSV File to Load From** dialog box appears.
- 4 Select the .csv file and click **Open**.
During the import, one or more messages may appear warning you of duplicate names. Select the appropriate option for each duplicate tag.
- 5 When a success message appears, click **OK**.

Retaining Tag Value and Parameters

When you use multiple managed InTouch applications on one node, all applications use the same directory. If you configure tag data or parameters to be retained and you switch applications, the run-time data is lost.

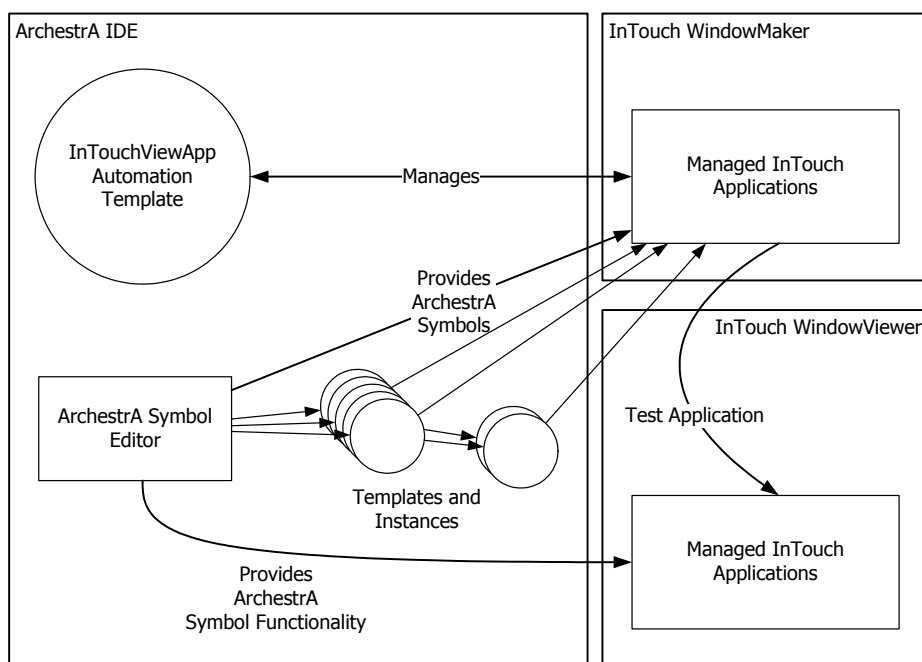
To configure retention in a managed InTouch application

- 1 Open the managed InTouch application with WindowMaker from the IDE.
- 2 On the **Special** menu, point to **Configure**, and then click **WindowViewer**. The **WindowViewer Properties** dialog box appears.
- 3 Click the **Managed Application** tab.
- 4 In the **Local Working Directory** box, type the name of a unique existing directory. This is the name of the directory on the target run-time node.

Chapter 3

Using ArcestrA Symbols in WindowMaker

You can use ArcestrA Symbols created with the ArcestrA Symbol Editor in the IDE in your managed InTouch application.



You can:

- Embed ArcestrA Symbols into an InTouch window.
- Resize embedded ArcestrA Symbols.
- Add a limited number of InTouch animations to ArcestrA Symbols.
- Configure the custom properties of embedded ArcestrA Symbols.
- Start the ArcestrA Symbol Editor.
- Test the ArcestrA Symbols in WindowViewer.
- Create a new Instance of the AutomationObject that hosts the embedded ArcestrA Symbol.

Embedding ArcestrA Symbols into an InTouch Window

You can embed an ArcestrA Symbol into InTouch windows of your managed InTouch application.

The ArcestrA Symbol can be part of:

- The Graphic Toolbox.
- An ArcestrA object template.
- An ArcestrA object instance.

You cannot embed an ArcestrA Symbol into windows of stand-alone InTouch applications. You can publish a managed InTouch application and use ArcestrA Symbols in the published application. However, you cannot add new ArcestrA Symbols or edit existing ones.

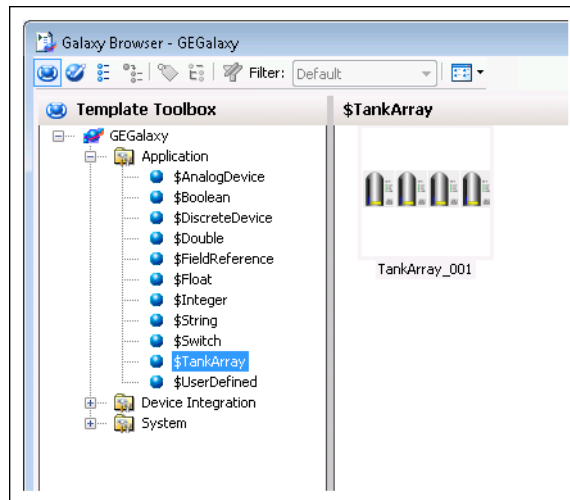
Embedding ArchestrA Symbols from Automation Templates

You can embed an ArchestrA Symbol from an Automation template that hosts ArchestrA Symbols. At the same time, a new derived instance of the selected template is created.

For information about creating a new instance based on an ArchestrA Symbol already on the InTouch window, see [Testing ArchestrA Symbols in WindowViewer](#) on page 65.

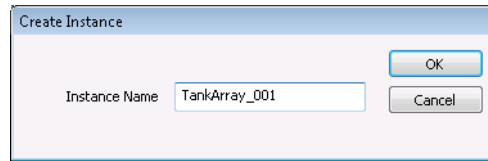
To embed an ArchestrA Symbol from an Automation template

- 1 Open WindowMaker.
- 2 On the **Edit** menu, click **Embed ArchestrA Symbol**. The **Galaxy Browser** dialog box appears.
- 3 Click the **Template Toolbox** icon. The **Template Toolbox** list appears on the left.

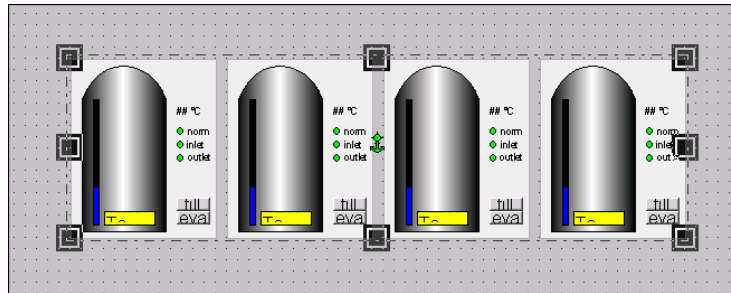


- 4 Select the template that contains the ArchestrA Symbol you want to embed. The ArchestrA Symbols contained in the selected template appear on the right.
- 5 Select the ArchestrA Symbol you want to embed and click **OK**. The Galaxy Browser closes and the insertion icon appears if the pointer is over the InTouch window.

- Click in the InTouch window where you want to embed the ArcestrA Symbol. The **Create Instance** dialog box appears.



- In the **Instance Name** box, type a name for the instance.
- Click **OK**. An instance is automatically derived from the template with the name you specify. The symbol is embedded into the InTouch window.



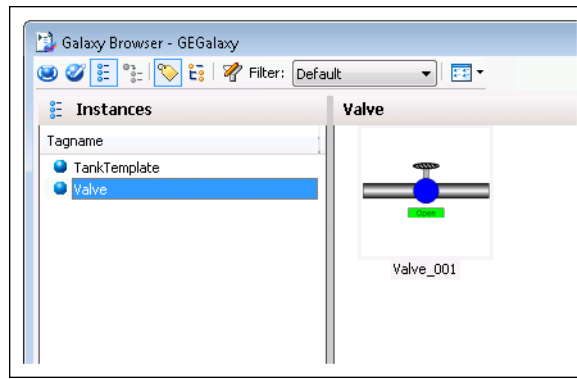
Embedding ArchestrA Symbols from Instances

You can embed ArchestrA Symbols from instances that have ArchestrA Symbols associated with them.

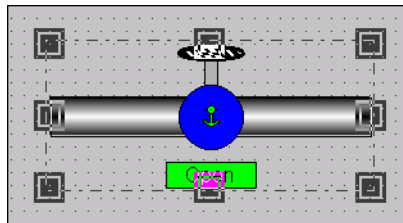
When you embed an ArchestrA Symbol from an instance, the symbol is associated with that instance.

To embed an ArchestrA Symbol from an instance

- 1 Open WindowMaker.
- 2 On the **Edit** menu, click **Embed ArchestrA Symbol**. The **Galaxy Browser** dialog box appears.
- 3 Click the Instances icon. The **Instances** list appears on the left.



- 4 Click on the instance that contains the ArchestrA Symbol you want to embed. The ArchestrA Symbols associated with the selected instance appear on the right.
- 5 Click on the ArchestrA Symbol you want to embed and click **OK**. The Galaxy Browser closes and the insertion icon appears if the pointer is over the InTouch window.
- 6 Click in the InTouch window where you want to embed the ArchestrA Symbol. The symbol is embedded into the InTouch window.

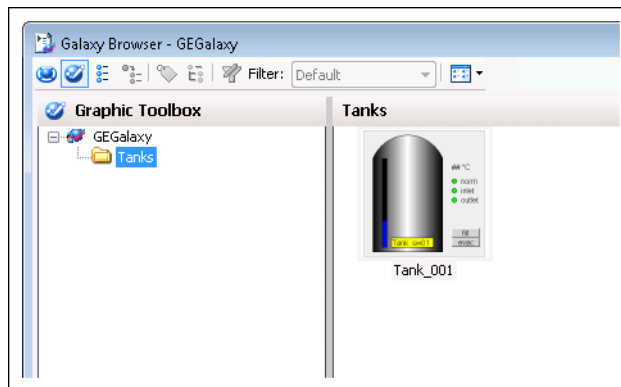


Embedding ArcestrA Symbols from the Graphic Toolbox

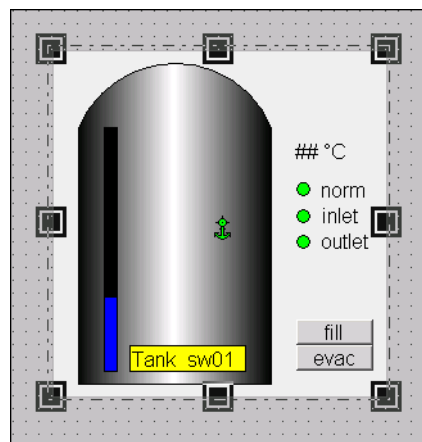
You can embed ArcestrA Symbols from the Graphic Toolbox.

To embed an ArcestrA Symbol from the Graphic Toolbox

- 1 Open WindowMaker.
- 2 On the **Edit** menu, click **Embed ArcestrA Symbol**. The **Galaxy Browser** dialog box appears.
- 3 Click the Graphic Toolbox icon. The **Graphic Toolbox** list appears on the left.



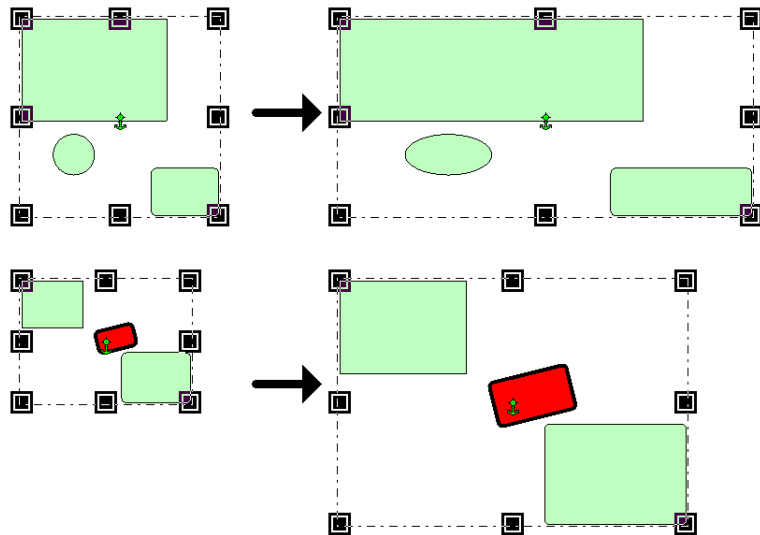
- 4 Select the ArcestrA Symbol you want to embed and click **OK**. The insertion icon appears if the pointer is over the InTouch window.
- 5 Click in the InTouch window where you want to embed the ArcestrA Symbol. The symbol is embedded into the InTouch window.



Resizing Embedded ArchestrA Symbols

After embedding an ArchestrA Symbol into an InTouch window, you can resize it with its handles or with the width and height value entry as you would with any other InTouch object.

However, if the ArchestrA Symbol contains at least one rotated element, you can only resize the ArchestrA Symbol proportionally.



You cannot resize the embedded ArchestrA Symbol smaller than its minimum size. The minimum size may be determined by the pen width of a contained element.

You can reset the embedded ArchestrA Symbol to its original size when it was created in the ArchestrA Symbol Editor.

To resize an embedded ArchestrA Symbol

- 1 Select the ArchestrA Symbol so that the handles appear.
- 2 Do one of the following:
 - Drag the one of the handles to resize the ArchestrA Symbol to the new size.
 - Enter width and height in the **W** and **H** boxes on the status bar.

To resize an embedded ArchestrA Symbol to its original size

- ◆ Right-click the embedded ArchestrA Symbol you want to change to its original size, point to **ArchestrA Graphic**, and then click **Symbol - Original Size**. The embedded ArchestrA Symbol is changed to its original size.

Configuring ArcestrA Symbols in WindowMaker

You can configure embedded ArcestrA Symbols in WindowMaker by:

- Standard editing, such as copying, cutting, pasting, duplicating, resizing, moving, and deleting.
- Setting up WindowMaker animation links.
- Connecting an ArcestrA Symbol with InTouch tags.
- Selecting an alternate instance of the same parent.
- Selecting an alternate symbol of the same instance.
- Enabling or disabling dynamic size propagation.

Configuring WindowMaker Animation Links of an ArcestrA Symbol

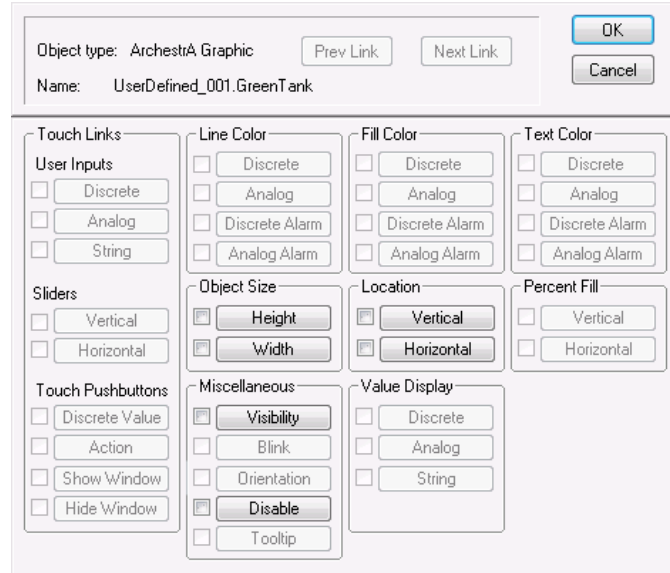
You configure WindowMaker animation links of an embedded ArcestrA Symbol in the same way as any other InTouch object. You can only configure animation links that are external to the embedded ArcestrA Symbol, such as:

- Object size
- Object location
- Visibility
- Enablement

The animation links configured in WindowMaker are independent from those configured in the ArcestrA Symbol Editor. They do not inherit the settings of the ArcestrA Symbol and take precedence when run in WindowViewer.

To configure WindowMaker animation links of an embedded ArchestrA Symbol

- 1 Select the embedded ArchestrA Symbol.
- 2 On the **Special** menu, click **Animation Links**. The **Animation Links** dialog box appears.



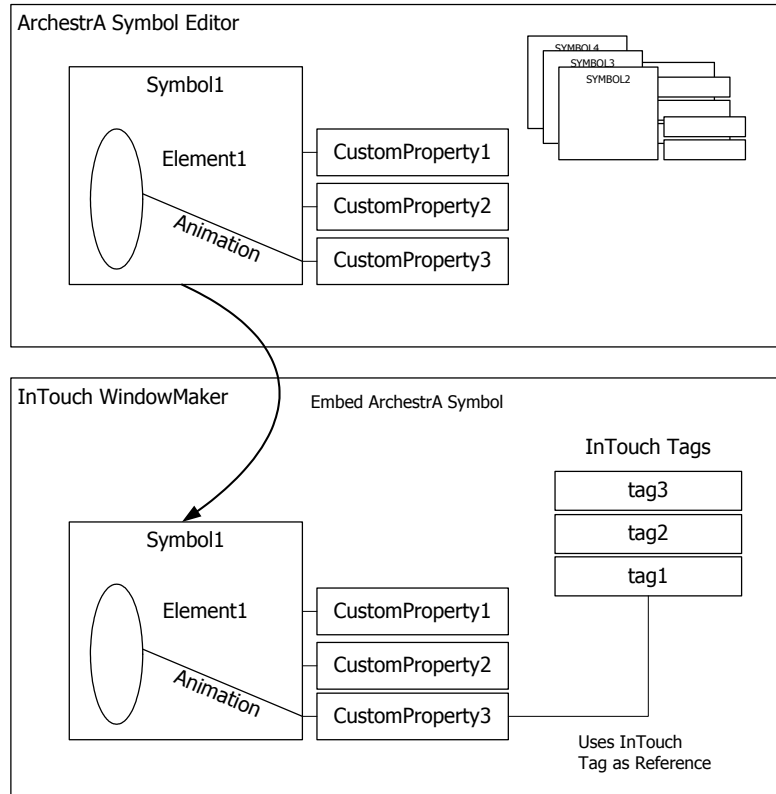
- 3 Make any changes as you would to any other InTouch object.
- 4 Click **OK**.

Connecting ArcestrA Symbols to InTouch Tags

You can connect ArcestrA Symbols to InTouch tags by overriding the custom properties of an embedded ArcestrA Symbol.

Custom properties expose the properties of an ArcestrA Symbol to InTouch. Custom properties may or may not be used internally by the animations of the ArcestrA Symbol.

Connecting ArcestrA Symbols with InTouch Tags



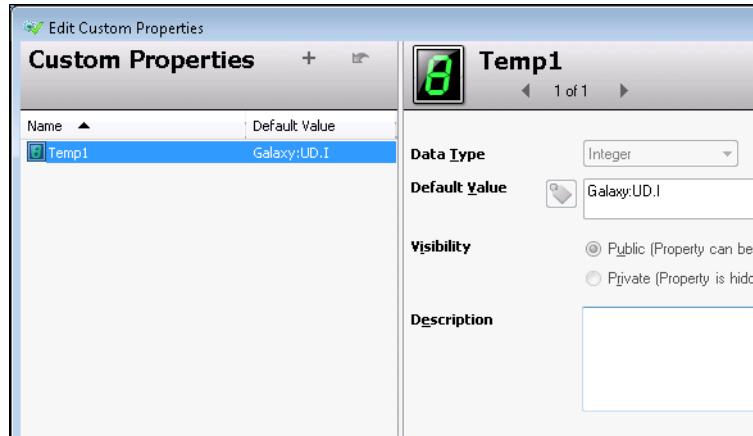
When you embed an ArchestrA Symbol into an InTouch window, the references in the animation links are converted, as shown in the following table:

ArchestrA Symbol	Embedded ArchestrA Symbol
Object.Extension	galaxy:Object.Extension
intouch:Tagname	Tagname

For more information about custom properties, see the *Creating and Managing ArchestrA Graphics User's Guide*.

To connect an ArchestrA Symbol to an InTouch tag

- 1 Right-click the embedded ArchestrA Symbol in the InTouch window, point to **ArchestrA Graphic**, and then click **Edit Custom Properties**. The **Edit Custom Properties** dialog box appears.



- 2 Select the custom property you want to connect to an InTouch tag. The configuration for the selected custom property appears in the right pane.
- 3 In the **Default Value** box, do one of the following:
 - Type the name of the InTouch tag.
 - Click the browse button and select a tag from the **Select Tag** dialog box.
- 4 To restore the original value of the custom property, click **Restore**.
- 5 Click **OK**. Any animation in the ArchestrA Symbol that is configured with the selected custom property now uses the InTouch tag value during processing.



Example of Connecting ArcestrA Symbols to InTouch Tags

This example shows you how to connect a tank symbol with a percent vertical fill animation created by the ArcestrA Symbol Editor to an InTouch tag.

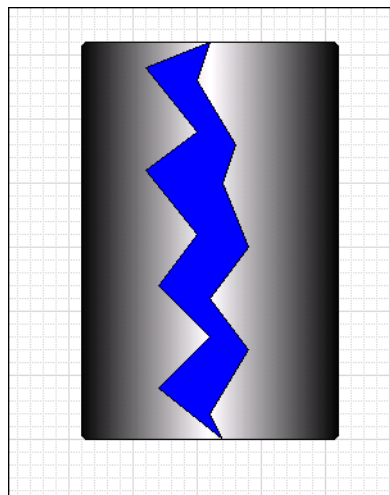
You do this in three main steps:

- Create a sample Tank as an ArcestrA Symbol.
- Create the InTouch application.
- Derive and view the sample tank in WindowViewer.

For more details on the individual steps, see the *Creating and Managing ArcestrA Graphics User's Guide*.

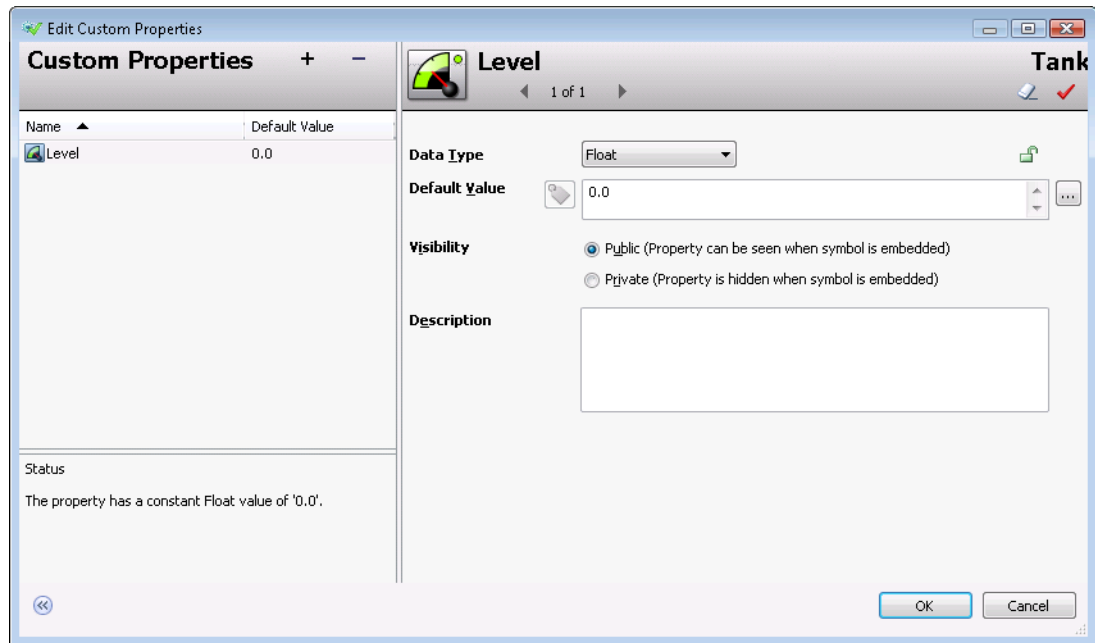
To create a sample Tank as ArcestrA Symbol

- 1 In the IDE, create a new symbol called “Tank” and open it in the ArcestrA Symbol Editor.
- 2 Paste a rectangle on the canvas. Change its appearance as needed.
- 3 Create a colored polygon element that represents a cutout of the tank to show the tank level.

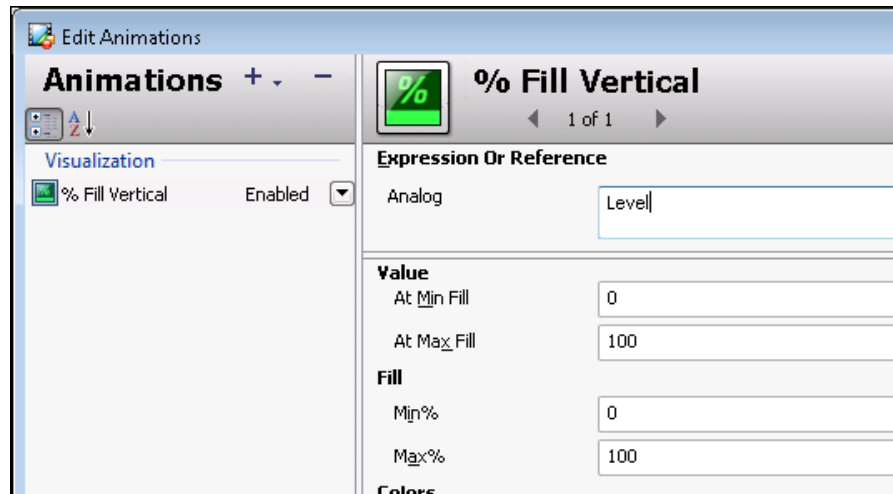


- 4 Click on the canvas. On the **Special** menu, click **Custom Properties**. The **Edit Custom Properties** dialog box appears.
- 5 Add a custom property called Level.

- 6 Configure the property details. Do the following:
 - In the **Data Type** list, click **Float**.
 - In the **Default Value** box, type 0.



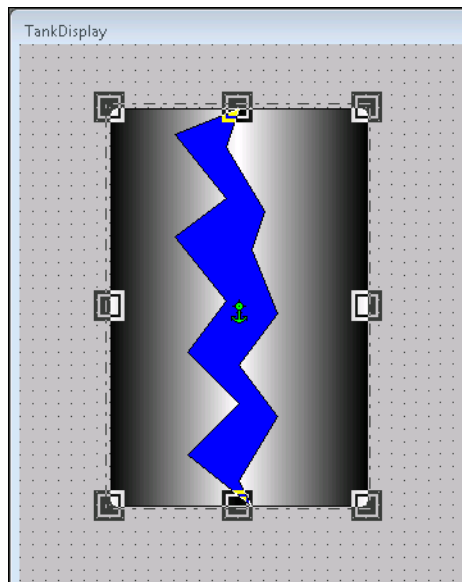
- 7 Click **OK**.
- 8 Double-click on the polygon element that represents the tank level. The **Edit Animations** dialog box appears.
- 9 Add a **% Vertical Fill** animation.
- 10 In the **Analog** box in the right pane, type the name of the custom property. In this example, it is Level.



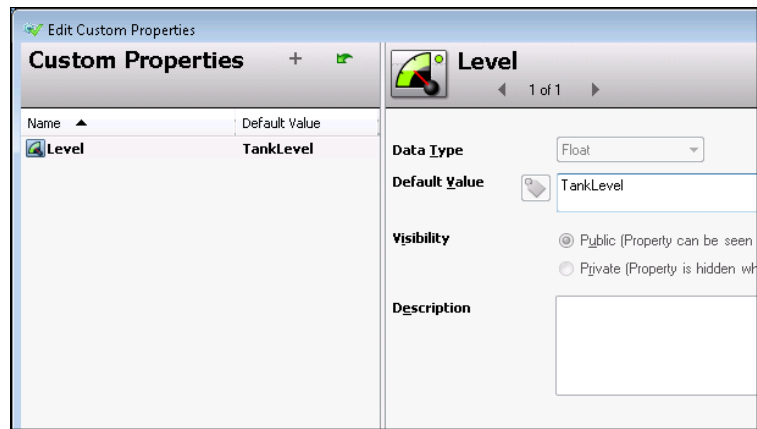
- 11 Click **OK** to close the **Edit Animations** dialog box.
- 12 Click **Close and Save** to close the ArcestrA Symbol Editor.

To create the InTouch application

- 1 In the ArcestrA IDE, create a new managed InTouch application. For more information, see [Creating a Managed InTouch Application](#) on page 31.
- 2 Open the managed InTouch application in WindowMaker.
- 3 Create a new window called TankDisplay.
- 4 Open the Tagname Dictionary and create a new real InTouch tag named TankLevel.
- 5 Click the Embed ArcestrA Symbol icon. The **Galaxy Browser** dialog box appears.
- 6 Select the Tank symbol and click **OK**.
- 7 Click in the window at the new location to embed the symbol. The Tank symbol is embedded into the window.



- 8 Right-click the embedded ArcestrA Symbol, point to **ArcestrA Graphic "Tank"**, and then click **Edit Custom Properties**. The **Edit Custom Properties** dialog box appears.

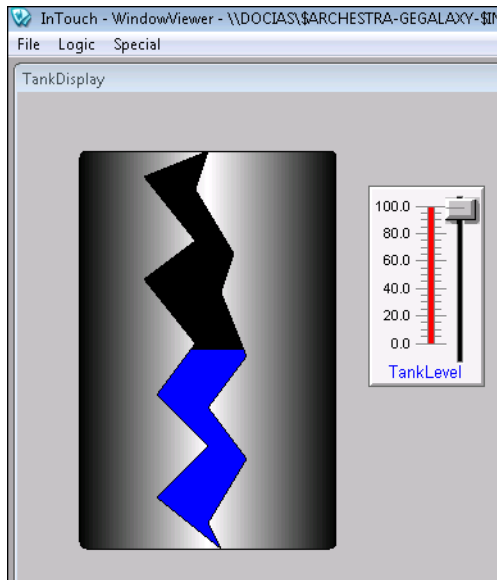


- 9 Select the custom property Level.
- 10 In the **Default Value** box, type `TankLevel`. You can also click the ellipsis button to browse for `TankLevel` using the **Select Tag** dialog box.
- 11 Click **OK**.
- 12 Paste a slider on the window and configure it with the local InTouch tag `TankLevel`.
- 13 Save the changes and close WindowMaker. The managed InTouch application is automatically checked in.

To derive and test the sample tank

- 1 In the ArcestrA IDE, derive an instance of the managed InTouch application and deploy it together with a WinPlatform and a ViewEngine instance.
- 2 Open the InTouch Application Manager and start the listed application in WindowViewer. The tank and the slider appear on the window in WindowViewer.

- 3 You can move the slider to change the tank level.



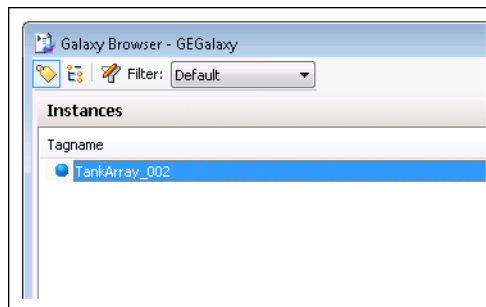
Selecting Alternate Instances from the Same Parent

You can redirect all references in the ArcestrA Symbol to an alternate instance. The appearance of the ArcestrA Symbol does not change, except possibly for its size, as it is not possible to edit inherited ArcestrA Symbols.

You cannot use this function with ArcestrA Symbols that originate from the Graphic Toolbox, as they are not associated with any object.

To select an alternate instance from the same parent

- 1 Right-click the embedded ArcestrA Symbol, point to **ArcestrA Graphic**, and then click **Select Alternate Instance**. The **Galaxy Browser** dialog box appears. It shows all other instances that have the same parent.



- 2 Select an alternate instance from the list and click **OK**. The references of the ArcestrA Symbol are updated to point at the new alternate instance.

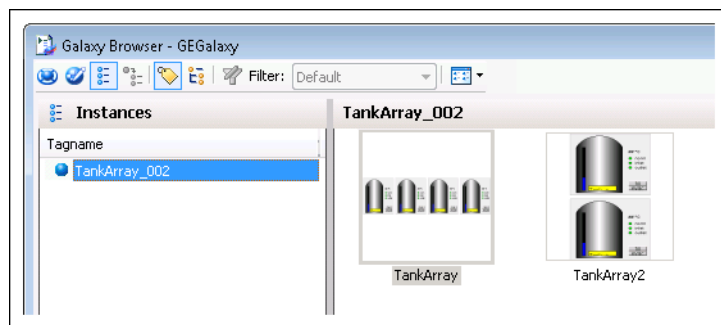
Selecting Alternate Symbols of the Same Instance

You can replace an embedded ArchestrA Symbol with another ArchestrA Symbol belonging to the same instance.

You cannot use this function with ArchestrA Symbols that originate from the Graphic Toolbox, as they are not associated with any object.

To select an alternate ArchestrA Symbol from the same instance

- 1 Right-click the embedded ArchestrA Symbol, point to **ArchestrA Graphic**, and then click **Select Alternate Symbol**. The **Galaxy Browser** dialog box appears.



- 2 Select an alternate symbol in the right pane and click **OK**.
- 3 If the alternate symbol is a different size than the original symbol, a message appears prompting if you want to keep the size of the currently embedded ArchestrA Symbol. Do any of the following:
 - Click **Yes** to keep the current size of the selected ArchestrA Symbol.
 - Click **No** to update the size of the selected ArchestrA Symbol to the size of the new ArchestrA Symbol.

In both cases, the embedded ArchestrA Symbol is updated with the new alternate ArchestrA Symbol.

Substituting Strings in ArcestrA Symbols

You can substitute all strings in an embedded ArcestrA Symbol with alternate strings.

To substitute all strings in an embedded ArcestrA Symbol

- 1 Select the embedded ArcestrA Symbol.
- 2 On the **Special** menu, point to **Substitute**, and then click **Substitute Strings**. The **Substitute Strings** dialog box appears.
- 3 Type new strings in the corresponding boxes and click **OK**. The strings in the embedded ArcestrA Symbol are substituted by the new alternate strings.

Substituting References in ArcestrA Symbols

You can substitute all references in an embedded ArcestrA Symbol with alternate references.

To substitute all references in an embedded ArcestrA Symbol

- 1 Select the embedded ArcestrA Symbol.
- 2 On the **Special** menu, click **Substitute Tags**. The **Substitute Tags** dialog box appears.
- 3 Type new references in the corresponding boxes and click **OK**. The references in the embedded ArcestrA Symbol are substituted by the new alternate references.

Enabling or Disabling Dynamic Size Change Propagation of Embedded ArcestrA Symbols

You can enable or disable the dynamic size change propagation of embedded ArcestrA Symbols.

If the dynamic size change propagation is enabled, any change to the absolute anchor point position of the source symbol:

- Leaves the anchor points of its embedded symbols unchanged.
- Moves the embedded symbol position accordingly.

If the dynamic size change propagation is disabled, any change to the absolute anchor point position of the source symbol:

- Moves the anchor points of its embedded symbols accordingly.
- Leaves the embedded symbol position unchanged.

For more information about dynamic size propagation, see the *Creating and Managing ArcestrA Graphics User's Guide*.

To enable or disable dynamic size change propagation of an embedded symbol

- ◆ Right-click the embedded ArcestrA Symbol, point to **ArcestrA Graphic**, and then check or uncheck **Dynamic Size Change**.

Editing ArcestrA Symbols in the ArcestrA Symbol Editor

You can edit embedded ArcestrA Symbols using the ArcestrA Symbol Editor that is integrated in the ArcestrA IDE. You do this by:

- 1 Opening the embedded ArcestrA Symbol in ArcestrA Symbol Editor, modifying the symbol, and then saving it. The ArcestrA Symbol is updated in the template, instance or in the Graphic Toolbox.

For more information, see [Editing an Embedded ArcestrA Symbol](#) on page 62.



- 2 Accepting the changes in WindowMaker by clicking on the Symbol Changed icon in the right bottom corner of the status bar. The changes are then propagated to WindowMaker.

For more information, see [Accepting Symbol Changes in WindowMaker](#) on page 64.

Editing an Embedded ArcestrA Symbol

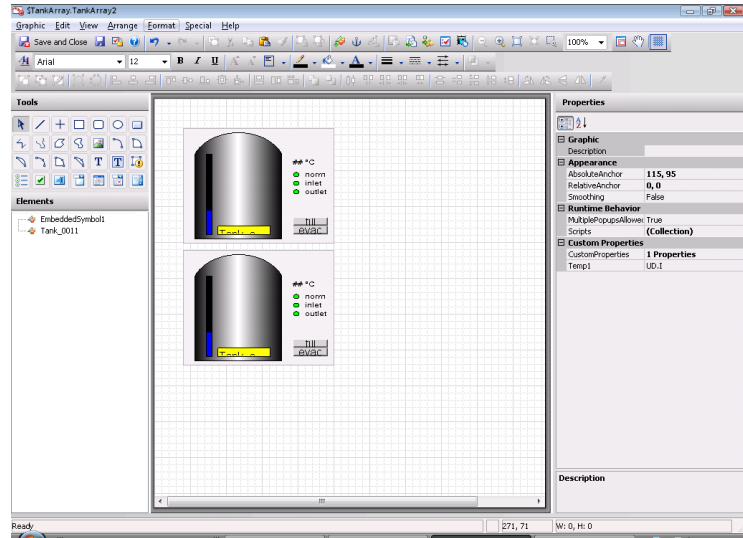
You can easily edit an embedded ArcestrA Symbol from within InTouch WindowMaker.

If the source symbol or its embedded symbols are used by other managed InTouch applications, the changes are propagated to the embedded symbols and the InTouch applications.

Any changes you make to the ArcestrA Symbol are not propagated to the embedded ArcestrA Symbols automatically. For more information, see [Accepting Symbol Changes in WindowMaker](#) on page 64.

To edit embedded ArchestrA Symbols using the ArchestrA Symbol Editor

- 1 Right-click the embedded ArchestrA Symbol, point to **ArchestrA Graphic**, and then click **Edit Symbol**. The **ArchestrA Symbol Editor** with the ArchestrA Symbol appears.



- 2 Edit the ArchestrA Symbol. For more information, see the *Creating and Managing ArchestrA Graphics User's Guide*.
- 3 Click **Close and Save**. The changes are saved and the ArchestrA Symbol Editor closes.
- 4 If the ArchestrA object is hosted by an instance or template, save and close the object editor in the IDE.

Accepting Symbol Changes in WindowMaker

If an ArcestrA Symbol changes and you are currently using it in an InTouch window in WindowMaker, you can immediately accept the change in WindowMaker.

If you do not accept the change immediately, the symbol is updated in WindowMaker when the window is closed and opened again.

The symbol is also updated if you switch to WindowViewer to test the application or if you open the application in WindowViewer on a target node.

To immediately accept symbol changes in WindowMaker

◆ For opened InTouch windows that contain embedded ArcestrA Symbols, do one of the following:



- Double-click the Symbol Changed icon in the bottom right corner of the status bar.
- Close the InTouch window containing the embedded ArcestrA Symbol and open it again.

In both cases, the changes made to the ArcestrA Symbol are reflected in the embedded symbol in the InTouch window.

Accepting Symbol Changes in WindowViewer

If an ArcestrA Symbol changes and you are currently testing it in WindowViewer, you can accept the change in WindowViewer.

For more information about testing embedded ArcestrA Symbols, see Testing ArcestrA Symbols in WindowViewer on page 65.

To accept symbol changes in WindowViewer when testing

- ◆ Do one of the following:
 - Fast-switch to WindowMaker and then back to WindowViewer.
 - Close the InTouch window and open it again. This only works if the **Always load windows from disk** option is checked in the **WindowViewer Properties** dialog box.

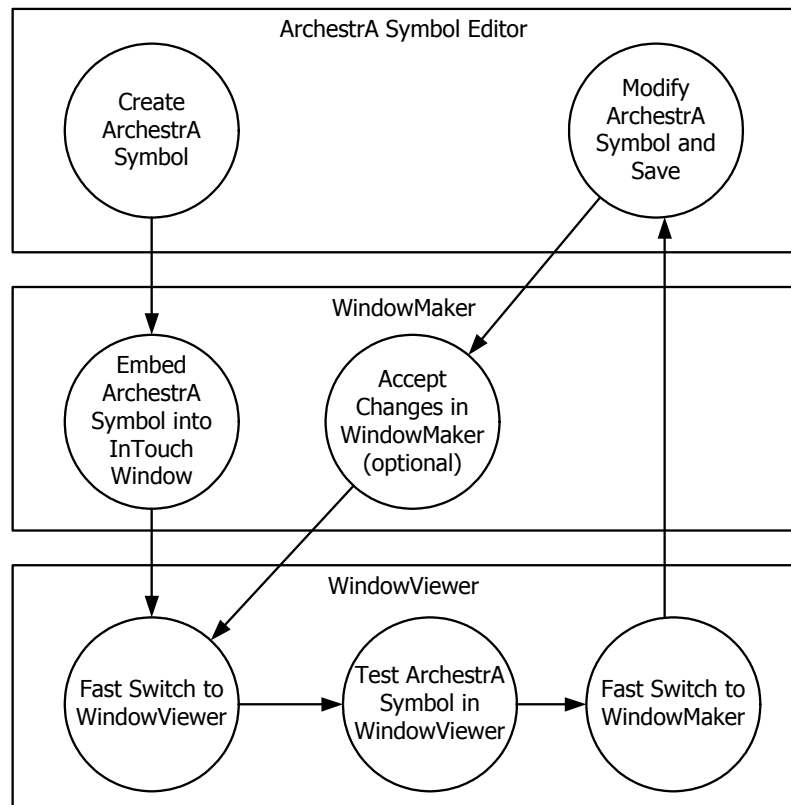
In both cases, the changes made to the ArcestrA Symbol are reflected in the embedded ArcestrA Symbol in the InTouch window.

Testing ArcestrA Symbols in WindowViewer

You can test the embedded ArcestrA Symbol in an InTouch window without having to derive an InTouchViewApp instance. You can test an embedded ArcestrA Symbol if you previously:

- Created an ArcestrA Symbol in the Graphic Toolbox, in an automation template or automation instance.
- Created a managed InTouch application.
- Embedded the ArcestrA Symbol in the managed InTouch application.

Developing and Testing ArcestrA Symbols



To test embedded ArcestrA Symbols in WindowViewer

- 1 In WindowMaker, click **Runtime** to switch to WindowViewer.
- 2 Test the animations, behavior, and appearance of the embedded symbol as you would in a normal run-time environment.
- 3 You can fast-switch back to WindowMaker to make changes to the way the ArcestrA Symbol is embedded.

To change and test embedded ArcestrA Symbols in WindowViewer

- 1 Make changes to the ArcestrA Symbol in the ArcestrA Symbol Editor.
- 2 Save the changes.

If WindowViewer is open, then after a short while, a message appears in WindowViewer prompting you to accept the changes. Click **Yes**.

If WindowViewer is closed, then you can fast-switch from WindowMaker to WindowViewer to see your changes. It is faster to close WindowViewer and to re-open WindowViewer than to wait for the changes to propagate to the open WindowViewer session.

Creating New Automation Instances

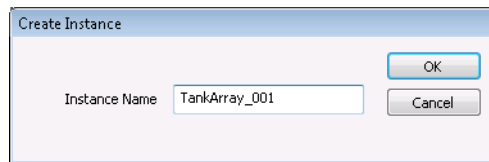
You can quickly create a new instance of the AutomationObject that hosts an embedded ArchestrA Symbol. This way, you do not need to switch to the ArchestrA IDE and derive an instance.

The new instance is unassigned, so you need to assign and deploy it in the ArchestrA IDE before you can use it.

You can only create new Automation instances for ArchestrA Symbols hosted by templates or instances. ArchestrA Symbols in the Graphic Toolbox do not have this functionality.

To create a new Automation instance

- 1 Right-click the embedded ArchestrA Symbol, point to **ArchestrA Graphic**, and then click **New Instance**. The **Create Instance** box dialog box appears.



- 2 In the **Instance Name** box, type a name for the instance.
- 3 Click **OK**. An instance is automatically derived from the template with the name you specify.

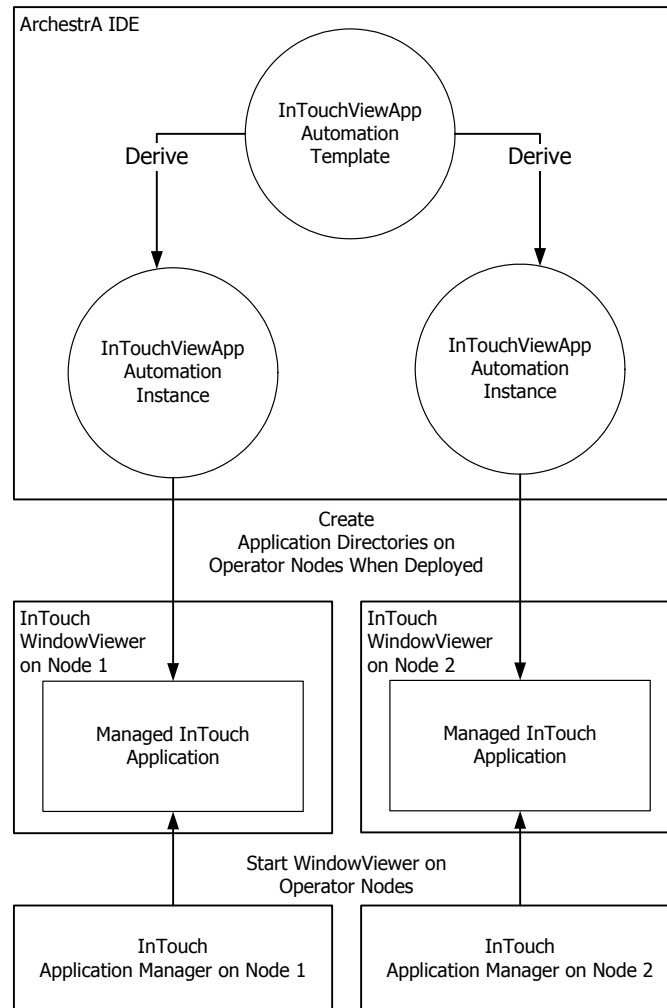
Chapter 4

Using Managed InTouch Applications at Run Time

You can run managed InTouch applications on remote nodes by deploying InTouchViewApp instances to those nodes.

You can also deploy changes of the InTouch application and contained ArchestrA Symbols to these nodes and select whether to accept or decline the changes for each node.

The following graphic shows how managed InTouch applications are deployed to run-time nodes.




Deploying a Managed InTouch Application

You can deploy a managed InTouch application from the ArcestrA IDE to the local node or a remote node. After you deploy the application, you can run it in WindowViewer on the remote nodes.

Deploying a InTouchViewApp Object for the First Time

The first time you deploy an InTouchViewApp object, the associated InTouch application is copied to the node of the platform that hosts the object. This is called the operator node.

To deploy a managed InTouch application

- 1 Open the ArcestrA IDE.
- 2 Select the instance of the InTouchViewApp for which you want to deploy the managed InTouch application.
- 3  On the **Object** menu, click **Deploy**. The **Deploy** dialog box appears.
- 4 Click **OK**. The complete InTouch application is copied to the operator node.

Deploying Changes to a Managed InTouch Application

You can change a managed InTouch application by:

- Changing the references, content, or size of an ArcestrA Symbol that is used in a managed InTouch application.
- Changing the managed InTouch application itself by opening WindowMaker from the InTouchViewApp template.



In both cases, when you save the changes, the changes are propagated from the updated template to the derived instances. These appear with the Pending Changes icon.

The changes are not immediately reflected in a running WindowViewer session. The operator of each node can select to accept or decline the changes. For more information, see [Accepting New Application Versions at the Operator Node](#) on page 73.

To deploy changes to a managed InTouch application

- 1 Open the ArcestrA IDE.
- 2 Select the instance of the InTouchViewApp for which you want to deploy the changes of a managed InTouch application.
- 3 On the **Object** menu, click **Deploy**. The **Deploy** dialog box appears.
- 4 Click **OK**. The changes are copied to the operator node.

Starting a Managed InTouch Application

From the operator node, you can start Application Manager and select the managed InTouch application you want to run.

You can also set the resolution in Application Manager to run the managed InTouch application in different resolutions.

To start the managed InTouch application

- 1 On the node the InTouchViewApp object is deployed to, start the InTouch Application Manager.
- 2 In the application list, select the managed InTouch application you want to run in WindowViewer.
- 3 Click the WindowViewer icon. The application starts in WindowViewer after a short while.

To set the dynamic resolution conversion settings

- 1 Open the InTouch Application Manager.
- 2 On the **Tools** menu, click **Node Properties**. The **Node Properties** dialog box appears.
- 3 Click the **Resolution** tab.
- 4 Select the **Allow WindowViewer to dynamically change resolution** check box.

If **Allow WindowViewer to dynamically change resolution** is unchecked, the managed application runs with the resolution in which it was developed.

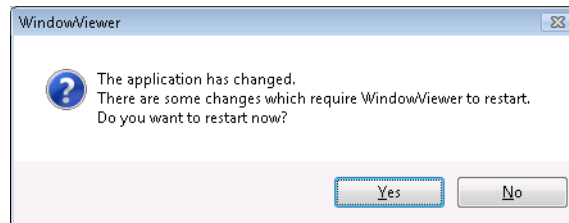
- 5 Configure how you want to run the application. Do any of the following:
 - Click **Use application resolution** to run the managed application at the same resolution as it was developed in.
 - Click **Convert to screen video resolution** to convert the managed application so that it can run with the screen resolution.
 - Click **Custom resolution** to convert the managed application to a specified resolution.
- 6 Click **OK**.

Accepting New Application Versions at the Operator Node

If the managed InTouch application is changed and its associated InTouchViewApp instance is deployed, you can select to accept or decline the changes at the run-time node.

A message appears prompting you if you want to accept the changes to the managed InTouch application:

- When you start WindowViewer from the InTouch Application Manager.
- While WindowViewer is running.



Depending on the nature of the change, you may be prompted to restart the WindowViewer application, or just reload it. You can also set the behavior of WindowViewer for application changes, such as:

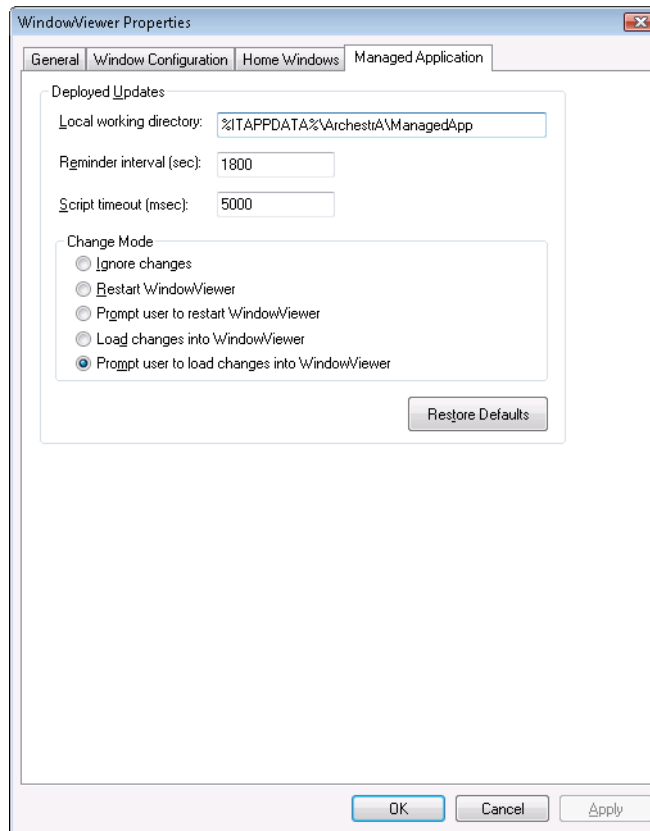
- How WindowViewer accepts or rejects these changes.
- How frequently WindowViewer should remind you to reload or restart WindowViewer when changes are pending.

To accept new application versions at the operator node

- ◆ Click **Yes**. The changes to the managed InTouch application are copied to the operator node and WindowViewer restarts or reloads.

To set the behavior of WindowViewer for application changes

- 1 Open the managed InTouch application in WindowMaker.
- 2 On the **Special** menu, point to **Configure**, and then click **WindowViewer**. The **WindowViewer Properties** dialog box appears.

3 Click the **Managed Application** tab.

- 4** In the **Change Mode** area, configure how WindowViewer responds when changes are deployed. Do any of the following:
- Click **Ignore Changes** to have WindowViewer ignore any deployed changes. You can manually configure the `RestartWindowViewer()` and `ReloadWindowViewer()` script functions to accept the changes depending on the `$ApplicationChanged` system tag.
 - Click **Restart WindowViewer** to have WindowViewer restart automatically.
 - Click **Prompt user to restart WindowViewer** to have WindowViewer prompt you to restart WindowViewer.
 - Click **Load changes into WindowViewer** to have WindowViewer load the changes automatically.
 - Click **Prompt user to load changes into WindowViewer** to have WindowViewer prompt you to load changes into WindowViewer.

- 5 In the **Reminder Interval (sec)** box, type how often, in seconds, the user is reminded to load or restart the changes into WindowViewer. This option is only available when the applicable change mode has been set. Set the interval to 0 to not remind the user again.
- 6 Click **OK**.

To set the default behavior for WindowViewer

- 1 Open the managed InTouch application in WindowMaker.
- 2 On the **Special** menu, point to **Configure**, and then click **WindowViewer**. The **WindowViewer Properties** dialog box appears.
- 3 Click the **Managed Application** tab.
- 4 Click **Restore Defaults**. The settings are reset to their default values.
- 5 Click **OK**.

Running ArcestrA Scripts in Embedded ArcestrA Symbols

When you run a managed InTouch application in WindowViewer, any ArcestrA scripts associated with elements or symbol scripts themselves run as expected.

However, some scripts contained in symbols can run for a long time and stop you from interacting with other InTouch elements.

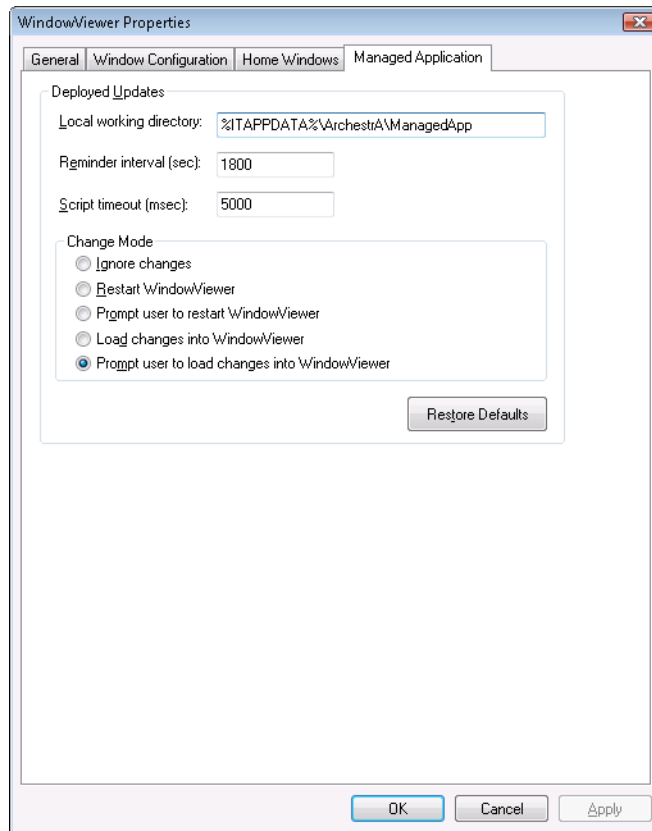
To prevent this, you can set a script time-out that is applicable for all scripts in the managed InTouch application. A script timeout stops script execution and returns the control to the operator.

By default, scripts time out after 5 seconds.

To set the script time-out

- 1 Open a managed InTouch application in WindowMaker.
- 2 On the **Special** menu, click **Configure**, and then **WindowViewer**. The **WindowViewer Properties** dialog box appears.

3 Click the **Managed Application** tab.



4 In the **Script timeout (msec)** box, type a value in milliseconds.

5 Click **OK**.

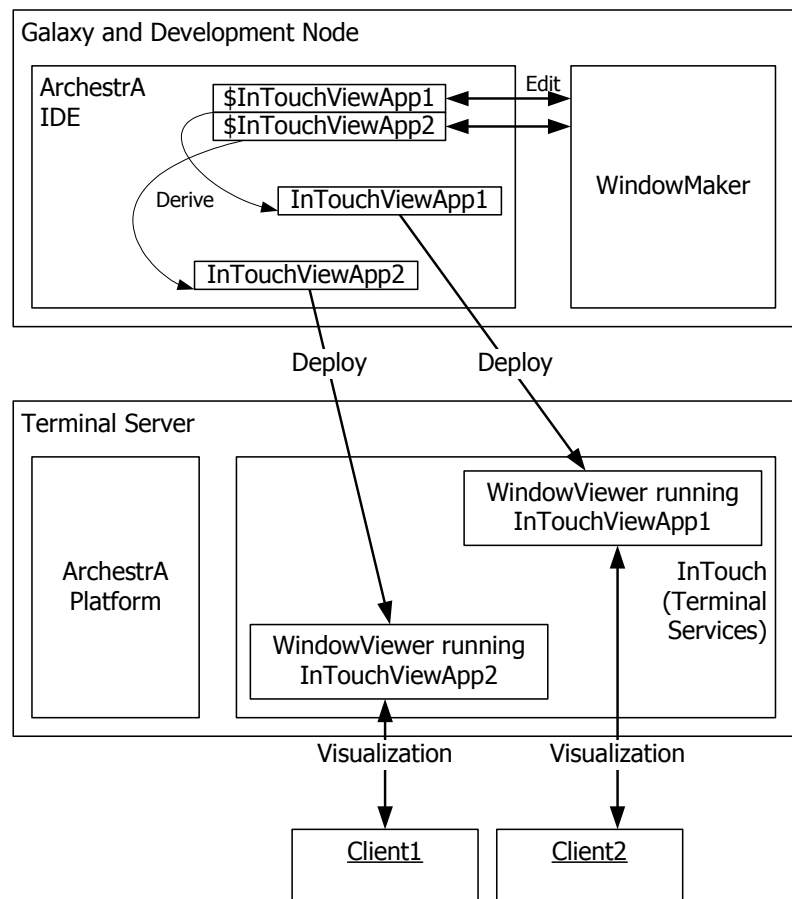
Deploying the InTouchViewApp Object in a Terminal Services Environment

You can run managed InTouch applications in a Terminal Services environment. The main advantage of this architecture is that you can run multiple InTouch applications on one computer at the same time.

To do this, you must:

- Use InTouch Terminal Services Edition.
- Deploy each InTouchViewApp instance with its own ViewEngine host.
- Run each managed InTouch application in its own terminal services client session.

Managed InTouch Applications in a Terminal Services Environment



Index

A

about

- InTouchViewApp object 17
- managed InTouch applications 12
- published InTouch applications 13
- stand-alone InTouch applications 10
- ViewEngine object 23
- alternate instances 58
- alternate symbols 59
- animation links, configuring for an ArcestrA Symbol 50
- application management, with the ArcestrA IDE 15
- Application Manager, starting the ArcestrA IDE 30
- application versions, accepting at the run-time node 73
- applications, types 9, 14
- ArcestrA IDE
 - application management 15
 - starting from Application Manager 30
 - starting WindowMaker from 33
- ArcestrA Symbols
 - accepting changes in WindowMaker 64
 - accepting changes in WindowViewer 64
 - change propagation 27, 61

- configuring animation links 50
- configuring in WindowMaker 50
- connecting to InTouch tags 52, 54
- creating 24
- editing 62
- editing in the ArcestrA Symbol Editor 62
- embedding from automation templates 45
- embedding from instances 47
- embedding from the Graphic Toolbox 48
- embedding into an InTouch window 25, 44
- resizing 49
- running ArcestrA scripts 75
- selecting alternate symbols of the same instance 59
- size propagation 27
- substituting references 60
- substituting strings 60
- testing in WindowViewer 65
- attributes, InTouchViewApp object 21
- automation templates, embedding ArcestrA Symbols from 45
- AutomationObjects, InTouchViewApp object 22

C

- change propagation, ArcestrA Symbols 27
- changes, submitting for an InTouch application 35
- communications, Galaxy 11
- creating
 - ArcestrA Symbols 24
 - automation instances 67
 - managed InTouch application 31
 - object instances 26

D

- deleting, managed InTouch application 40
- deploying
 - changes for a managed InTouch application 71
 - InTouchViewApp object 19, 71
 - InTouchViewApp object in a Terminal Services environment 77
 - managed InTouch application 70
- documentation conventions 7
- dynamic size change propagation 27, 61

E

- editing
 - ArcestrA Symbols in the ArcestrA Symbol Editor 62
 - embedded ArcestrA Symbol 62
 - managed InTouch application 18
- exporting
 - InTouch windows 21
 - InTouchViewApp object 19, 38
 - tag data 20, 41

G

- Galaxy, communications 11
- Graphic Toolbox, embedding ArcestrA Symbols from 48

I

- importing
 - InTouch application 36
 - InTouch windows 21
 - InTouchViewApp object 19, 38
 - tag data 20, 41

instances

- creating 67
 - embedding ArcestrA Symbols from 47
 - selecting alternate from the same parent 58
- InTouch application
 - associating with an InTouchViewApp template 18
 - importing 36
 - submitting changes 35
 - InTouch tags, connecting to ArcestrA Symbols 52, 54
 - InTouchViewApp object
 - about 17
 - attributes 21
 - deploying 19
 - deploying for the first time 71
 - deploying in a Terminal Services environment 77
 - differences from other AutomationObjects 22
 - importing and exporting 38
 - InTouchViewApp template, associating with an InTouch application 18

M

- managed InTouch applications
 - about 12
 - compared to other types of applications 14
 - creating 31
 - deleting 40
 - deploying 70
 - deploying changes 71
 - editing 18
 - exporting and importing tag data 20
 - publishing 20, 39
 - starting 72
 - testing 18

O

- object instances, creating automatically 26

P

- parameters, retaining 42
- published InTouch applications, about 13
- publishing, managed InTouch applications 20, 39

R

- resizing, ArcestrA Symbols 49
- retaining
 - parameters 42
 - tag values 42
- run-time node, accepting new application versions 73

S

- scripts, running in ArcestrA Symbols 75
- size change propagation 27, 61
- stand-alone InTouch applications
 - about 10
 - compared to other types of applications 14
- starting, managed InTouch application 72
- substituting references for ArcestrA Symbols 60
- substituting strings for ArcestrA Symbols 60

T

- tag data, exporting and importing 41
- tag values, retaining 42
- testing
 - ArcestrA Symbols in WindowViewer 65
 - managed InTouch application 18

V

- ViewEngine object, about 23

W

- WindowMaker
 - accepting ArcestrA Symbol changes 64
 - configuring ArcestrA Symbols in 50
 - starting from the ArcestrA IDE 33
- windows
 - embedding ArcestrA Symbols into 25, 44
 - exporting and importing between InTouch applications 21
- WindowViewer, accepting ArcestrA Symbol changes 64

