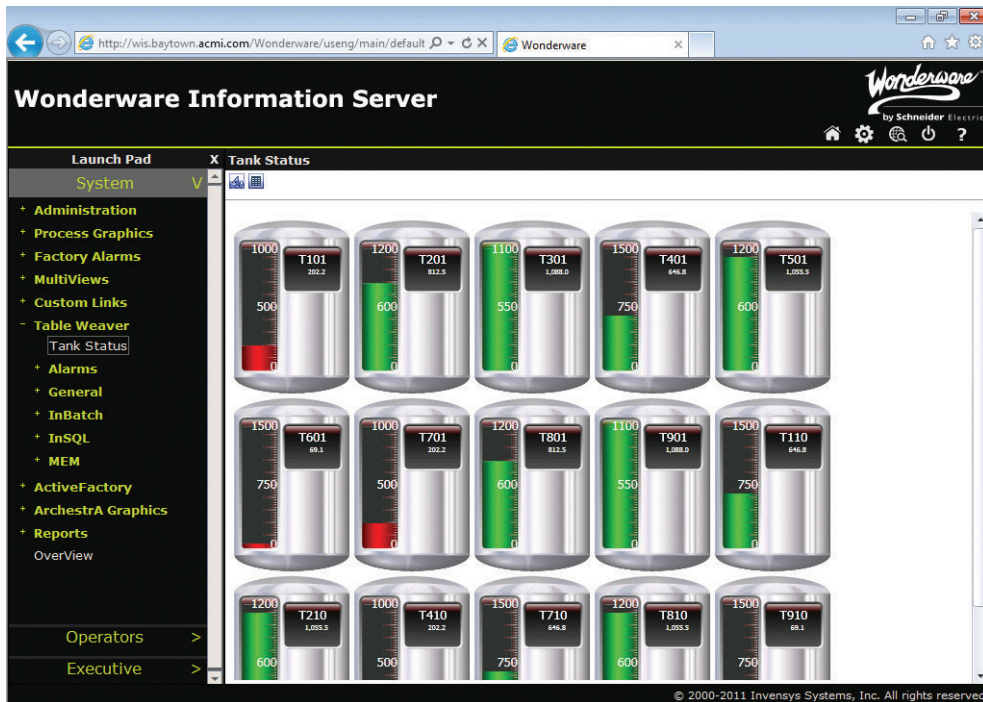


# Wonderware Information Server

Wonderware Information Server aggregates and presents plant performance and production data via a web solution that is easy to implement. Process graphics, trends, dashboards, reports, downtime, events, traceability and genealogy are all viewable through a secure Information Server portal. Each worker can have a customized view of plant operations helping maximize each worker's effectiveness.



# Wonderware Information Server



## SUMMARY

Wonderware Information Server software offers a single, secure Web solution for delivering critical operational data to all roles in the industrial organization, from the boardroom to the production floor.

## BUSINESS VALUE

Wonderware Information Server software facilitates better workforce collaboration and decision making through greater visibility of actual plant performance. Wonderware Information Server minimizes the cost of publishing operational data through an IT friendly web server concept and “out of the box” configuration tools.

Wonderware® Information Server® is designed for industrial workers so they can quickly and conveniently build a single web portal for accessing the full range of information and data coming from Wonderware and third party plant information systems.

This web-based solution aggregates a wide range of process, alarm and event data into trends, dashboards, production reports, equipment downtime reports, equipment efficiency reports, operations events and history, including product traceability and genealogy information.

Using Information Server, workers can detect and solve problems faster. Everyone has access to complete, up-to-date and accurate process information. Wonderware Information Server software enables each worker to view just the information they need via personalized web content — even in multiple languages.

Wonderware Information Server contains OverView, a highly configurable process analysis tool. OverView unifies data and information from many Wonderware sources including InTouch®, System Platform®, Historian®, Intelligence®, InBatch®, MES, IntelTrac®, as well as a host of third-party data sources.

## Enhance Collaboration

To be most effective, the entire workforce needs to be engaged in process improvement initiatives. Accurate and timely information is vital in unlocking the creative talents of workers.

Information Server provides workers the detailed and timely data they need to solve problems faster and discover hidden opportunities. Since Information Server is a web solution it is easy for workers to tap into this source of information from just about anywhere, helping drive greater collaboration.

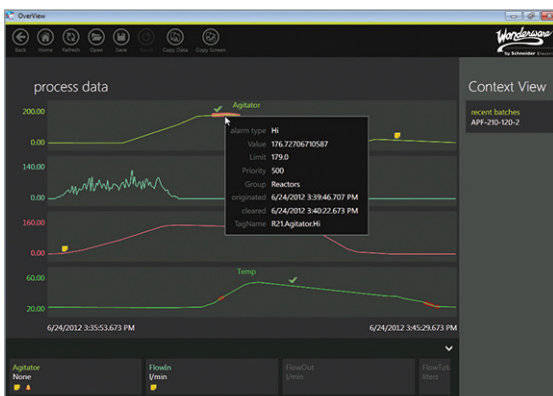
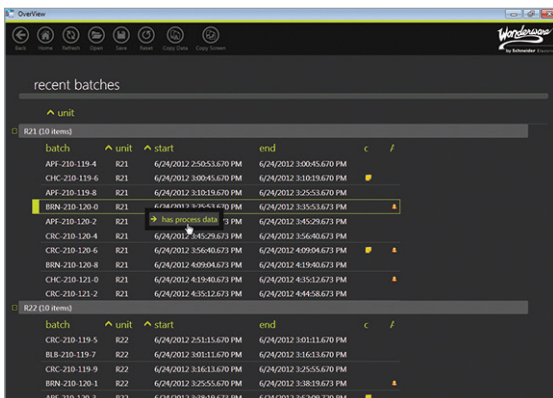
## SOLVE PROBLEMS FASTER

To solve process problems quickly you need the proper context. You need information from a variety of data sources displayed together so you can understand the entire process scenario. Wonderware Information Server's OverView does just that. It provides an integrated view of process, alarm and production history using an innovative “information model” with the latest Microsoft Windows 8 look and feel. OverView provides a rich user experience over the web with automatic data updates so you always see the latest data along with the historical context, vital for rapid analysis.

## Process Graphics Anywhere

Real-time process visualization displays can be viewed from anywhere — via the Web or company intranet. Operations, facilities management and engineering personnel have a direct view into critical processes, enabling better collaboration and troubleshooting.

InTouch HMI process graphics, including Archestra® Graphics, can be easily published to the web via the Wonderware Information Server software. Process adjustments can be accomplished remotely using the Wonderware Information Server's optional write-back functionality.



# Wonderware Information Server

## Wonderware Information Server Features

Wonderware Information Server has a rich set of features to make access to critical process and production information easy, including:

- Real-time and historical information from Wonderware supervisory systems, historians, manufacturing execution systems, batch systems, mobile solutions and many other third party systems
- OverView, providing rich data analysis capabilities that includes historical context
- TableWeaver, allowing drill-down reporting capabilities
- Embedded Historian Client capabilities, including feature-rich trend charts and X-Y scatter plots
- Out of the box reporting content, based on Microsoft® SQL Server® Reporting Services
- EMI (Enterprise Manufacturing Intelligence) dashboards and drill-down analysis can be provided by Wonderware Intelligence Software
- Any database or historian that supports ADO/ODBC connections can be accessed and included in data reports and analysis displays
- Third-party systems via open interfaces such as HTTP or content available as HTML reports can be incorporated into Wonderware Information Server

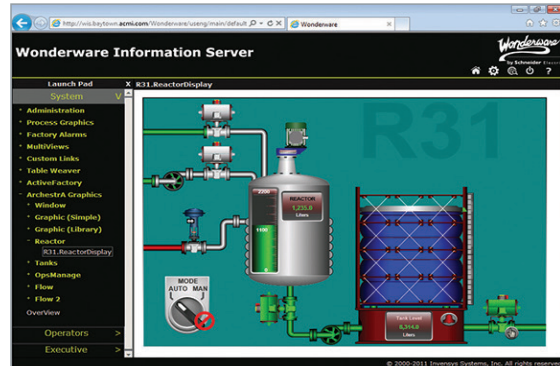
## Secure Web Solution

Wonderware Information Server software is delivered with built-in safeguards to protect information from unauthorized access, and prevent users without privileges from performing certain functions. Security features include:

- Integrated Microsoft Windows® operating system authentication
- Encryption/security – Secure Sockets Layer (SSL), Digital Certificates and Single Sign-On protections
- Firewall-friendly – The portal can be placed inside a DMZ
- Portal roles – The portal administrator assigns Read, Write and Administration privileges
- Publishing rights – Users must be assigned remote and local publishing privileges

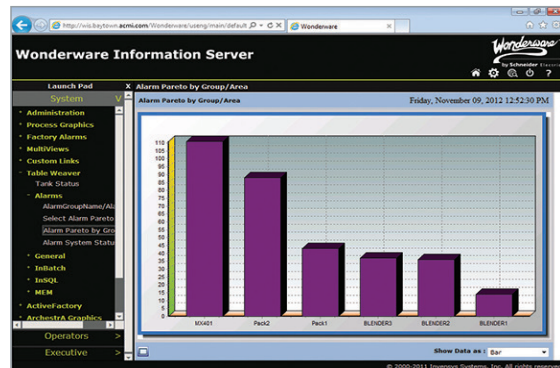
## Low Total Cost Of Ownership

Wonderware Information Server is built on top of industry-standard Microsoft technology and security, and embeds smoothly into corporate IT system landscapes. Once installed, plant personnel, with a minimum of training, can configure and implement a highly effective plant information web site without the need for custom web programming – allowing for a very low total cost of ownership.



This screenshot shows a table titled 'List of Alarms Records'. The table contains columns for Status, Details, Trend, TagName, OriginTime, Type, Value, Limit, Priority, Category, State, Description, and Severity. The data rows show various alarm events with their respective timestamps and values.

| Status | Details | Trend | TagName | OriginTime            | Type | Value            | Limit | Priority | Category | State       | Description | Severity |
|--------|---------|-------|---------|-----------------------|------|------------------|-------|----------|----------|-------------|-------------|----------|
| OK     | OK      | OK    | Reactor | 11/9/2012 11:39:14 AM | HIH  | 106.74488720204  | 100   | 1        | VALUE    | Active Alar | 11879       | 42       |
| OK     | OK      | OK    | Reactor | 11/9/2012 11:33:44 AM | HIH  | 100.20167890207  | 100   | 1        | VALUE    | Active Alar | 11889       | 39       |
| OK     | OK      | OK    | Reactor | 11/9/2012 10:39:59 AM | HIH  | 112.80748924932  | 100   | 1        | VALUE    | Clear Alar  | 430         | 32       |
| OK     | OK      | OK    | Reactor | 11/9/2012 10:39:59 AM | HIH  | 77.984722249342  | 80    | 1        | VALUE    | Clear Alar  | 163         | 43       |
| OK     | OK      | OK    | Reactor | 11/9/2012 10:39:59 AM | HIH  | 187.09398388886  | 100   | 1        | VALUE    | Clear Alar  | 525         | 39       |
| OK     | OK      | OK    | Reactor | 11/9/2012 10:32:44 AM | HIH  | 101.94322470916  | 100   | 1        | VALUE    | Clear Alar  | 108         | 47       |
| OK     | OK      | OK    | Reactor | 11/9/2012 10:32:44 AM | LD   | 77.474282858431  | 80    | 1        | VALUE    | Clear Alar  | 180         | 33       |
| OK     | OK      | OK    | Reactor | 11/9/2012 10:32:44 AM | LD   | 77.644068050879  | 80    | 1        | VALUE    | Clear Alar  | 108         | 39       |
| OK     | OK      | OK    | Reactor | 11/9/2012 10:39:59 AM | LOLO | 17.134681368942  | 40    | 1        | VALUE    | Clear Alar  | 4026        | 45       |
| OK     | OK      | OK    | Reactor | 11/9/2012 10:39:59 AM | RDC  | 130.42359754096  | 175   | 1        | RDC      | Clear Alar  | 103         | 32       |
| OK     | OK      | OK    | Reactor | 11/9/2012 9:56:26 AM  | HIH  | 108.78328820964  | 100   | 1        | VALUE    | Clear Alar  | 2703        | 62       |
| OK     | OK      | OK    | Reactor | 11/9/2012 9:54:41 AM  | HIH  | 104.393297483614 | 100   | 1        | VALUE    | Clear Alar  | 2073        | 41       |
| OK     | OK      | OK    | Reactor | 11/9/2012 9:38:36 AM  | HIH  | 108.403284749664 | 100   | 1        | VALUE    | Clear Alar  | 108         | 47       |
| OK     | OK      | OK    | Reactor | 11/9/2012 9:38:26 AM  | HIH  | 100.054886440331 | 100   | 1        | VALUE    | Clear Alar  | 2328        | 36       |
| OK     | OK      | OK    | Reactor | 11/9/2012 9:23:11 AM  | HIH  | 107.489793910417 | 100   | 1        | VALUE    | Clear Alar  | 210         | 51       |
| OK     | OK      | OK    | Reactor | 11/9/2012 9:17:06 AM  | HIH  | 107.348814898944 | 100   | 1        | VALUE    | Clear Alar  | 319         | 30       |



# Wonderware Information Server

## Wonderware Information Server Software Consists of:

### Web Content Server

The Web Content Server provides the software infrastructure for building content by publishing information views, dashboards and reports from other Wonderware or Schneider Electric Software applications, or it can use graphs and tables with a database query. The generated content can be used within the included Portal for navigation and administration, or via web parts or links inside existing web portals customized to your company's requirements. User-specific views can be tailored to particular work responsibilities.

### Web Server framework

- Home Page
- Portal personalization
- Centralized administration and management
- Integrated security
- Extensive search
- Multi-language support

### Web Clients

Personnel, with web access and the proper credentials, can access the broad range of operations information delivered by the Web Content Server from anywhere. In this way, personnel can gain the maximum benefit for the information and data generated from your Wonderware and third party software applications, and it reduces the IT resource requirements associated with thick client applications.

### Integration

- Microsoft SharePoint Services
- Microsoft SQL Server 2014, Microsoft SQL Server Reporting Services Intelligent Content Linking
- Wonderware Table Weaver, which provides streamlined content linking & powerful drill-through capabilities
- Alternative data displays for richer data visualization Trends
- Bar charts
- InTouch SmartSymbol displays
- ArchestrA Graphics

For more information visit <http://software.invensys.com/products/wonderware/production-information-management/information-server/> or contact your local Wonderware distributor.

